

Figure S1. Phenotypic characteristics of strain YX16 A. Colony morphology B. Hemolytic ability C. Gram staining

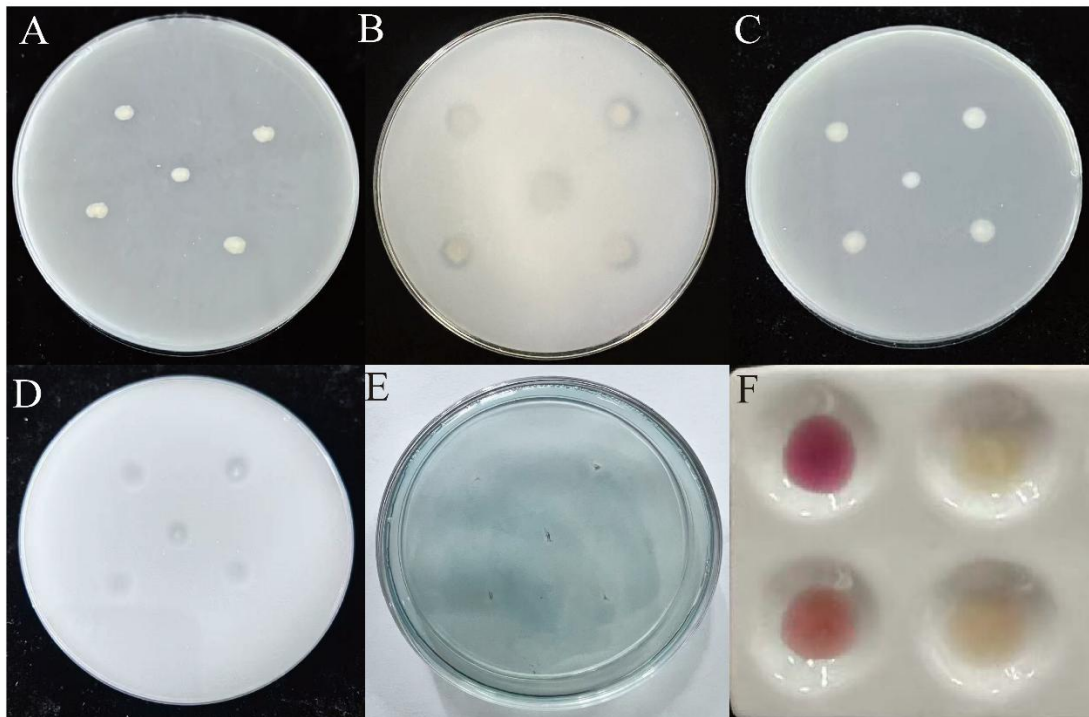


Figure S2. The growth-promoting ability of strain YX16

(A): Organic phosphorus solubilization; (B): Inorganic phosphorus solubilization; ©: Potassium solubilization; (D): Nitrogen fixation; (E): Siderophore production; (F): IAA production (Top left: positive control, top right: negative control, bottom left: strain YX16 positive treatment, bottom right: strain YX16 negative treatment)

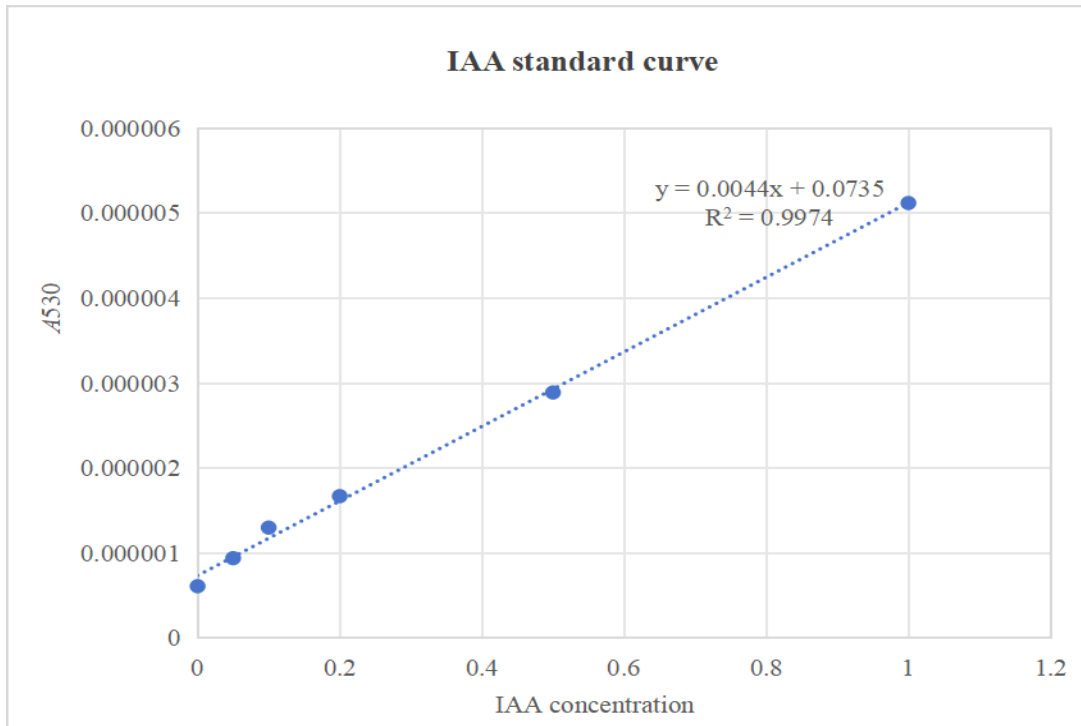


Figure S3. IAA Standard Curve