

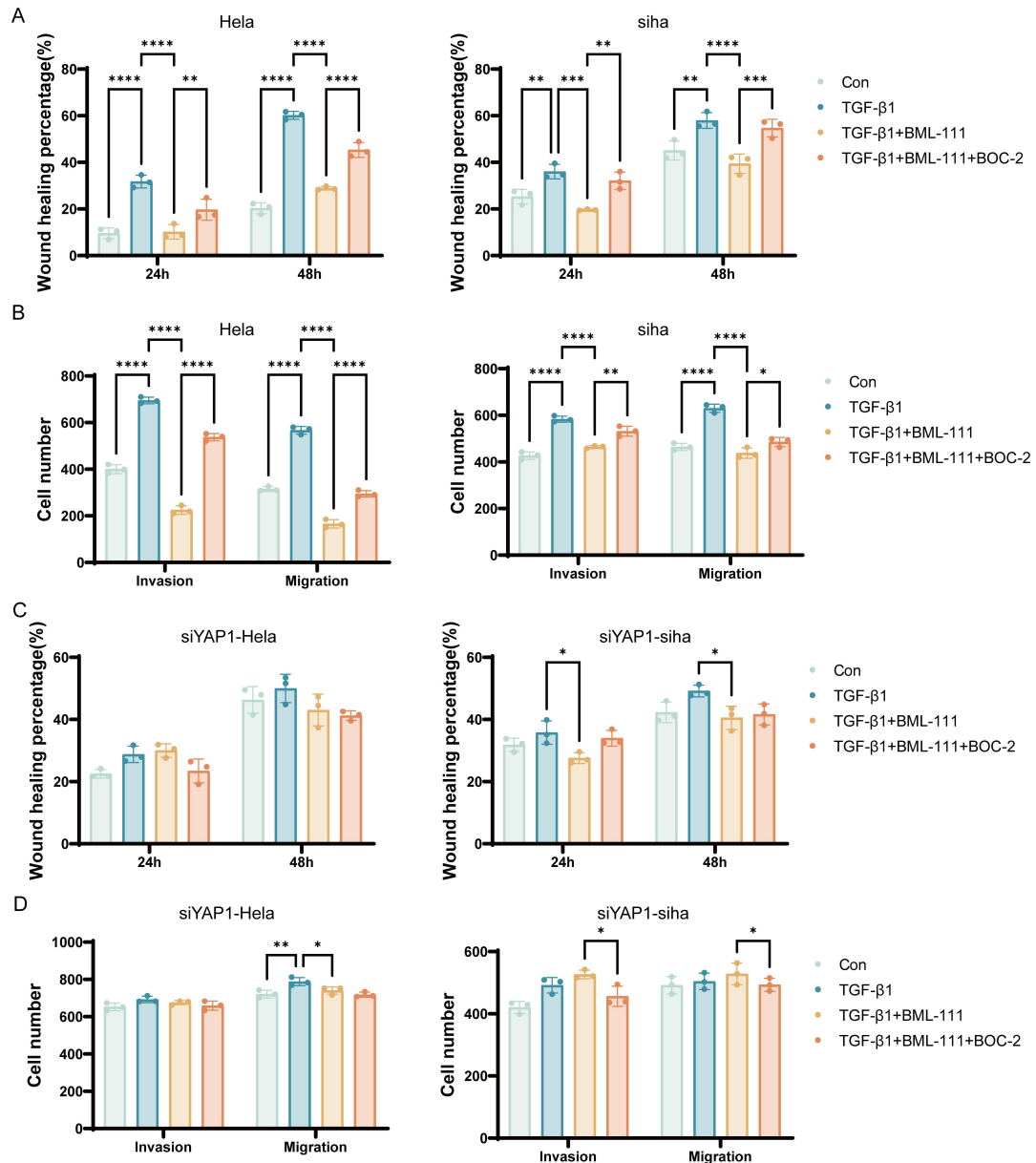
Supplementary Figure 1. Bioinformatics analysis of PAICS in cervical adenocarcinoma

(A) Venn diagram of differentially expressed genes (DEGs) between cervical adenocarcinoma tissues and normal cervical tissues in the TCGA database, as well as DEGs associated with mitochondrial and purine metabolism.

(B) Cluster heatmap generated by cluster analysis of the intersecting genes.

(C) Determination of clustering stability and optimal cluster number based on the area under the CDF curve.

(D-E) Screening of survival-related mitochondrial genes using LASSO-Cox regression, and identification of key prognostic genes combined with 10-fold cross-validation.



Supplementary Figure 2. Effects of YAP1 knockdown on the invasion and migration abilities of cervical adenocarcinoma cells

(A) Quantitative analysis of the migration ability of HeLa and SiHa cells in each group at 24 h and 48 h detected by wound healing assay.

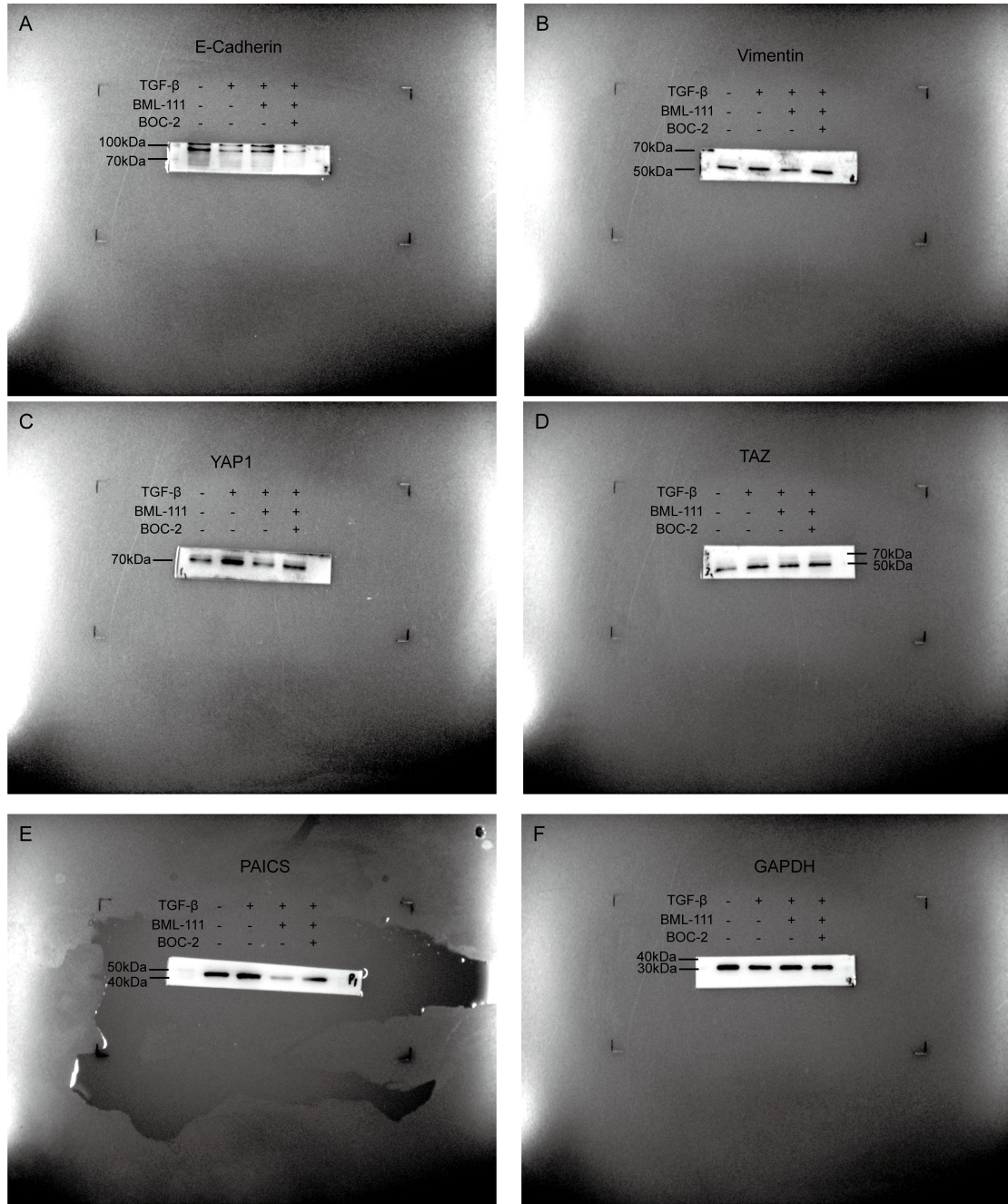
(B) Quantitative analysis of migration and invasion abilities of HeLa and SiHa cells in each group detected by Transwell assay.

(C) Quantitative analysis of the migration ability of HeLa and SiHa cells in each group after YAP1 knockdown detected by wound healing assay.

(D) Quantitative analysis of migration and invasion abilities of HeLa and SiHa cells in each group after YAP1 knockdown detected by Transwell assay.

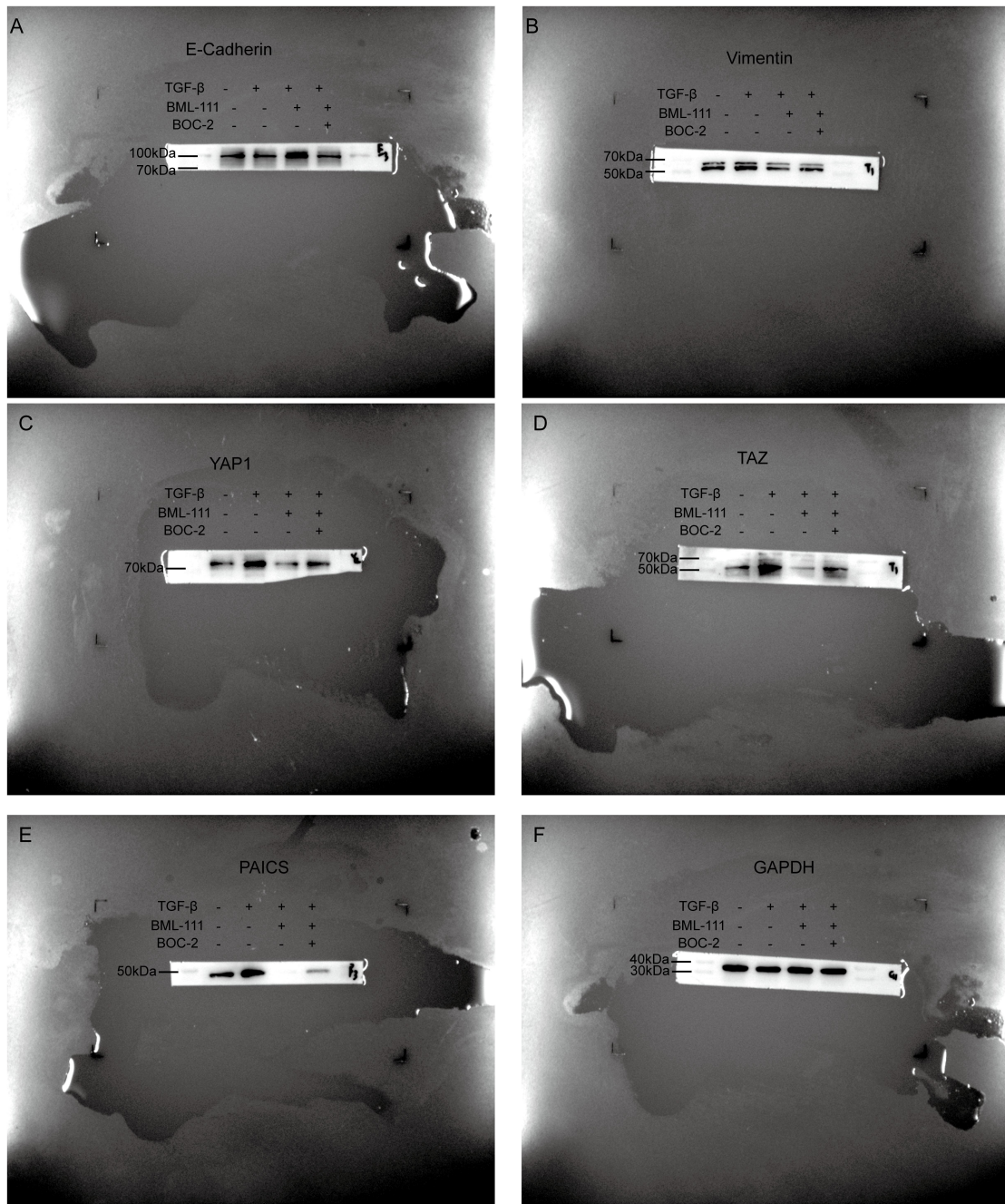
Data are presented as mean±standard deviation. One-way analysis of variance (ANOVA) followed by Tukey's multiple comparisons test was performed. * $P < 0.05$, ** $P < 0.01$, *** $P < 0.001$. All results are representative of three independent experiments.

Supplementary Figure 3



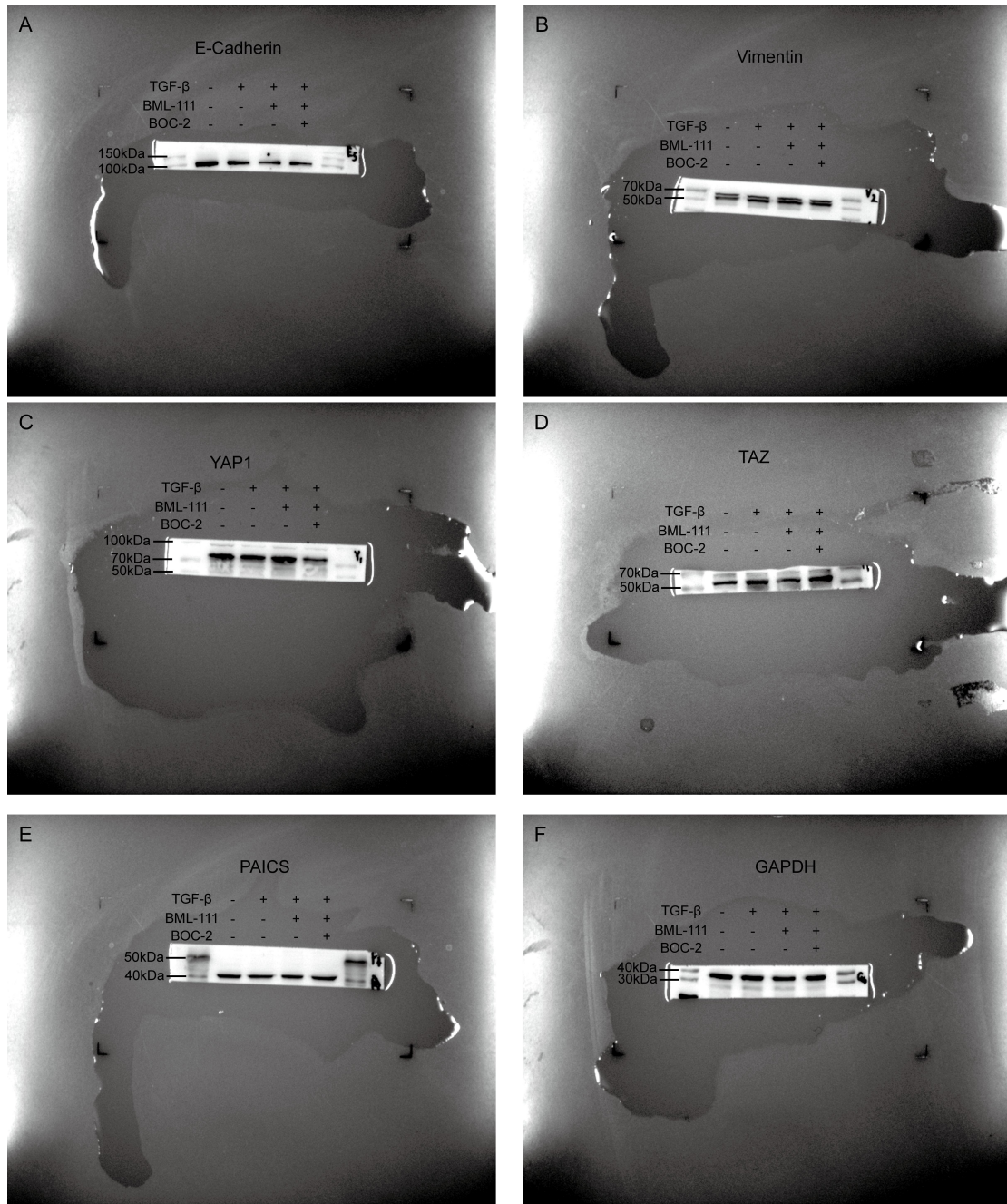
Supplementary Figure 3. Representative western blot images showing the expression levels of E-cadherin, Vimentin, YAP1, TAZ and PAICS in HeLa cells from distinct treatment groups.

Supplementary Figure 4



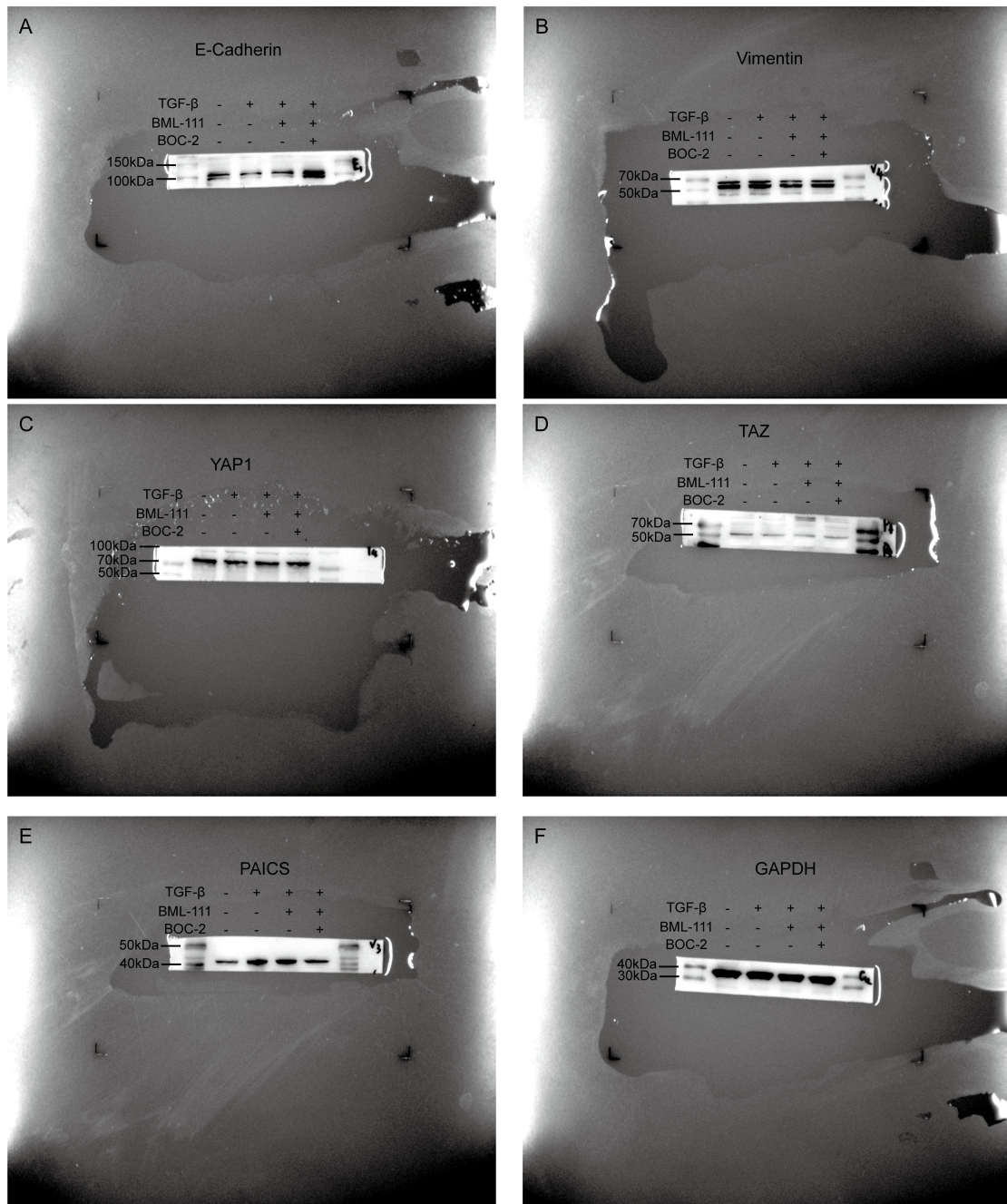
Supplementary Figure 4. Representative western blot images showing the expression of E-cadherin, Vimentin, YAP1, TAZ and PAICS in SiHa cells among varied treatment groups.

Supplementary Figure 5



Supplementary Figure 5. Representative western blot images showing the expression of E-cadherin, Vimentin, YAP1, TAZ and PAICS in YAP1-knockdown HeLa cells.

Supplementary Figure 6



Supplementary Figure 6. Representative western blot images showing the expression of E-cadherin, Vimentin, YAP1, TAZ and PAICS in YAP1-knockdown SiHa cells.