

Cx43 Western Blot Human ABCG2hi EPC Control and IPF

JH May 15, 2026

Sample Information

- Samples were human cell culture primary lines - 4 controls, 4 IPF (independent patients)
 - 1 aliquot thawed for both gels; 30uL/well, 20ug of protein/sample
 - Samples were tested via BCA assay and immediately aliquoted for Westerns, no freeze-thaw in between.
- Samples used and passage # at time of collection:
 - Controls:
 - VA-HD-06, Passage 15
 - IPF23K, Passage 16
 - VU-HD-11, Passage 15
 - VU-HD-07, Passage 15
 - IPF:
 - VA-IPF-12, Passage 17
 - VU-IPF-16 upper, Passage 15
 - VU-IPF-16 lower, Passage 16
 - VU-IPF-25, Passage 15

		Gel Layout									
Lane		1	2	3	4	5	6	7	8	9	10
Sample		Ladder	VA-HD-06	IPF237K	VU-HD-11	VU-HD-07	VA-IPF-25	VU-IPF-16 upper	VU-IPF-16 lower	VU-IPF-12	Ladder

B-Actin- post Cx43

Primary AB: B-Actin Cat:#4970 (Cell Signaling Technologies)

Primary AB Dilution: 1:1000

Blocker: 5% Milk in TBST

Secondary AB: Goat Anti-Rabbit Ig HRP Conjugated Cat # AP187p (CST)

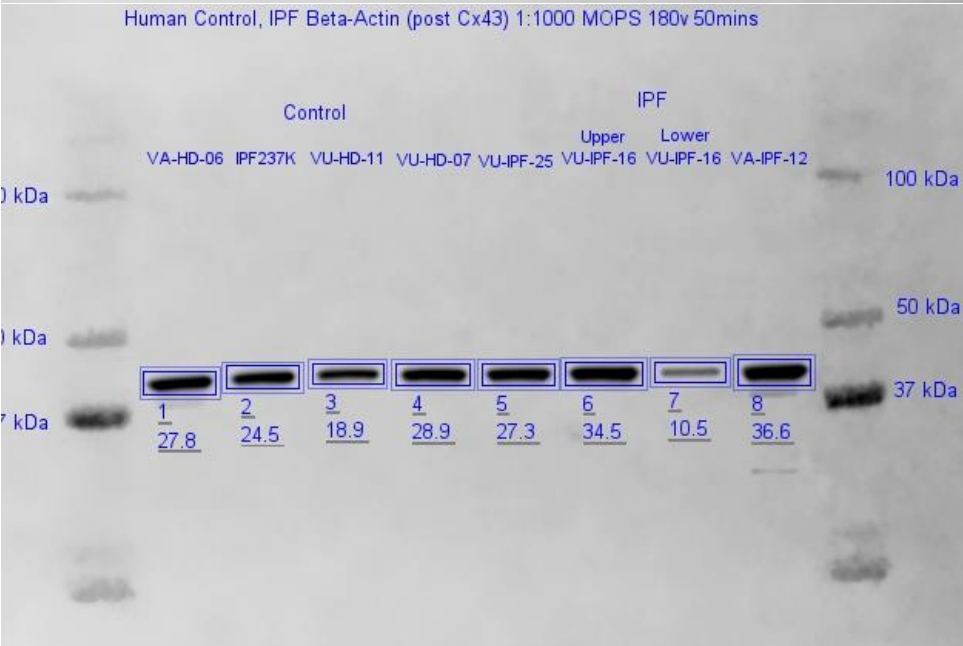
Secondary AB Dilution: 1:10,000

Molecular Weight: 45 kDa

Gel: V for mins MOPS Buffer

Ladder: Precision Plus Protein™ Kaleidoscope™ Prestained Protein

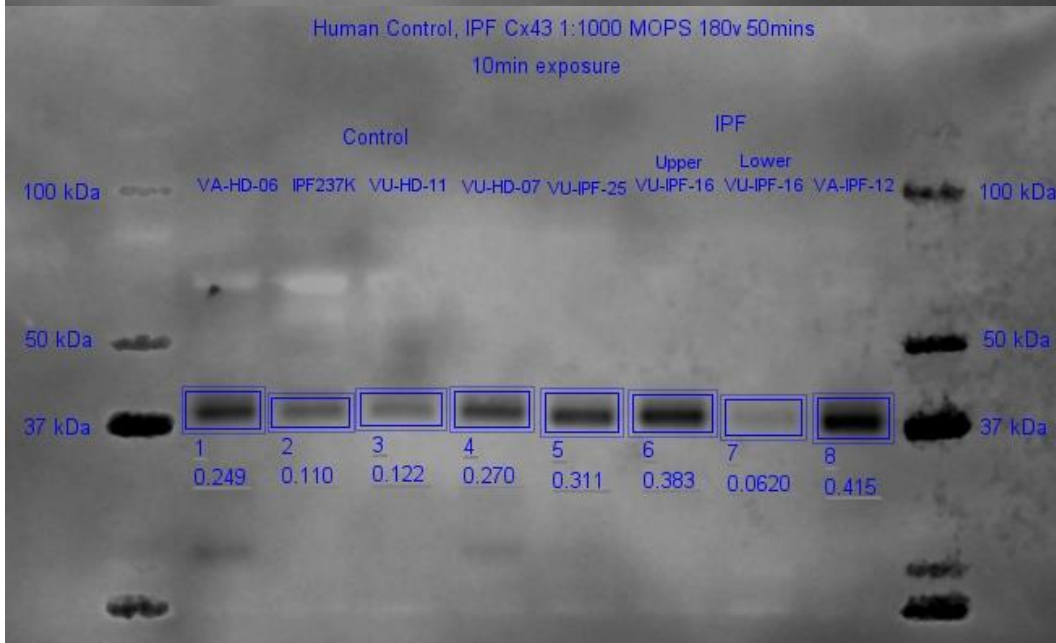
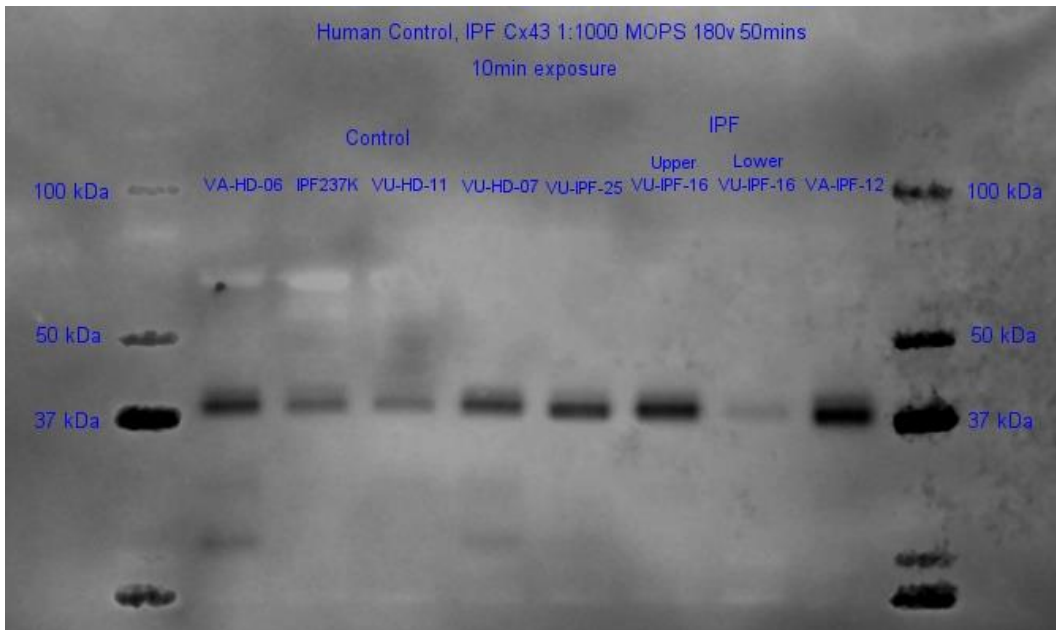
Standards #1610375 load 10 uL



Group	Sample	Protein [ug/ul]	20ug	uL needed
control	VA-HD-06	3071.510961	0.00651145	6.511453
control	IPF237K	2461.354046	0.00812561	8.125609
control	VU-HD-11	2468.715177	0.00810138	8.10138
control	VU-HD-07	2964.036962	0.00674755	6.747554
IPF	VA-IPF-12	3337.664784	0.00599221	5.992214
IPF	VU-IPF-16 upper	2477.547917	0.0080725	8.072498
IPF	VU-IPF-16 lower	2370.009301	0.00843879	8.438785
IPF	VA-IPF-25	2801.418222	0.00713924	7.139241

Image Name	Channel	Name	Signal	Total	Area	Bkgnd.	Type
0000582_01	Chemi	00001	27.844965	33.0456161	720	0.00722313	Signal
0000582_01	Chemi	00002	24.4825134	29.2121277	720	0.00656891	Signal
0000582_01	Chemi	00003	18.9415989	22.7518864	658	0.00579071	Signal
0000582_01	Chemi	00004	28.898056	33.7546425	750	0.00647545	Signal
0000582_01	Chemi	00005	27.3062115	32.6684837	735	0.00729561	Signal
0000582_01	Chemi	00006	34.5086517	41.1832123	832	0.00802231	Signal
0000582_01	Chemi	00007	10.5294285	13.5479221	672	0.00449181	Signal
0000582_01	Chemi	00008	36.6013145	43.942791	882	0.00832367	Signal

Cx43



Primary AB: Connexin43 Cat:#3512 (CST)

Primary AB Dilution: 1:1000

Blocker: 5% Milk in TBST

Secondary AB: Goat Anti-Rabbit Ig HRP Conjugated Cat # AP187p (CST)

Secondary AB Dilution: 1:10,000

Molecular Weight: 39, 41, 43, 44 kDA

Gel: 180V for 50 mins MOPS Buffer

Ladder: Precision Plus Protein™ Kaleidoscope™ Prestained Protein Standards #1610375 load 10 uL

Group	Sample	Protein [ug/ul]	20ug	uL needed
control	VA-HD-06	3071.510961	0.00651145	6.511453
control	IPF237K	2461.354046	0.00812561	8.125609
control	VU-HD-11	2468.715177	0.00810138	8.10138
control	VU-HD-07	2964.036962	0.00674755	6.747554
IPF	VA-IPF-12	3337.664784	0.00599221	5.992214
IPF	VU-IPF-16 upper	2477.547917	0.0080725	8.072498
IPF	VU-IPF-16 lower	2370.009301	0.00843879	8.438785
IPF	VA-IPF-25	2801.418222	0.00713924	7.139241

Image Name	Channel	Name	Signal	Total	Area	Bkgnd.	Type
0000579_01	Chemi	00001	0.24948597	1.298068	1128	0.00092959	Signal
0000579_01	Chemi	00002	0.10953069	0.8870835	931	0.00083518	Signal
0000579_01	Chemi	00003	0.1217804	0.9463186	1092	0.00075507	Signal
0000579_01	Chemi	00004	0.26988268	1.0934796	1104	0.00074601	Signal
0000579_01	Chemi	00005	0.31129646	1.1780553	1175	0.00073767	Signal
0000579_01	Chemi	00006	0.38291645	1.3634462	1224	0.00080109	Signal
0000579_01	Chemi	00007	0.06203699	0.9718475	1127	0.00080729	Signal
0000579_01	Chemi	00008	0.41488981	1.5897021	1196	0.00098228	Signal