

Epidemiological Dynamics of Sugar Beet Yellowing Viruses in Belgium

European Journal of Plant Pathology

Ellen A. Everaert¹, Pierre Hellin², Isabelle Stockmans³, Annelies Haegeman¹, Margot Beelaert², Louis Hautier², Yoika Foucart¹, Thomas Goedefroit¹, Maaïke Heyneman¹, Chloé Dufrane³, André Wauters³, Stéphan Steyer², Kris De Jonghe¹

¹Flanders Research Institute for Agriculture, Fisheries and Food (ILVO), Plant Sciences Unit, Merelbeke-Melle, 9820, Belgium

²Walloon Agricultural Research Center (CRA-W) - Life Sciences Department – Plant and Forest Health Unit, Rue de Liroux 2-4, Gembloux, 5030, Belgium

³Royal Belgian Institute for Beet Improvement (IRBAB-KBIVB), Tienen, 3300, Belgium

Corresponding author: E.A. Everaert; E-mail: ellen.everaert@ilvo.vlaanderen.be

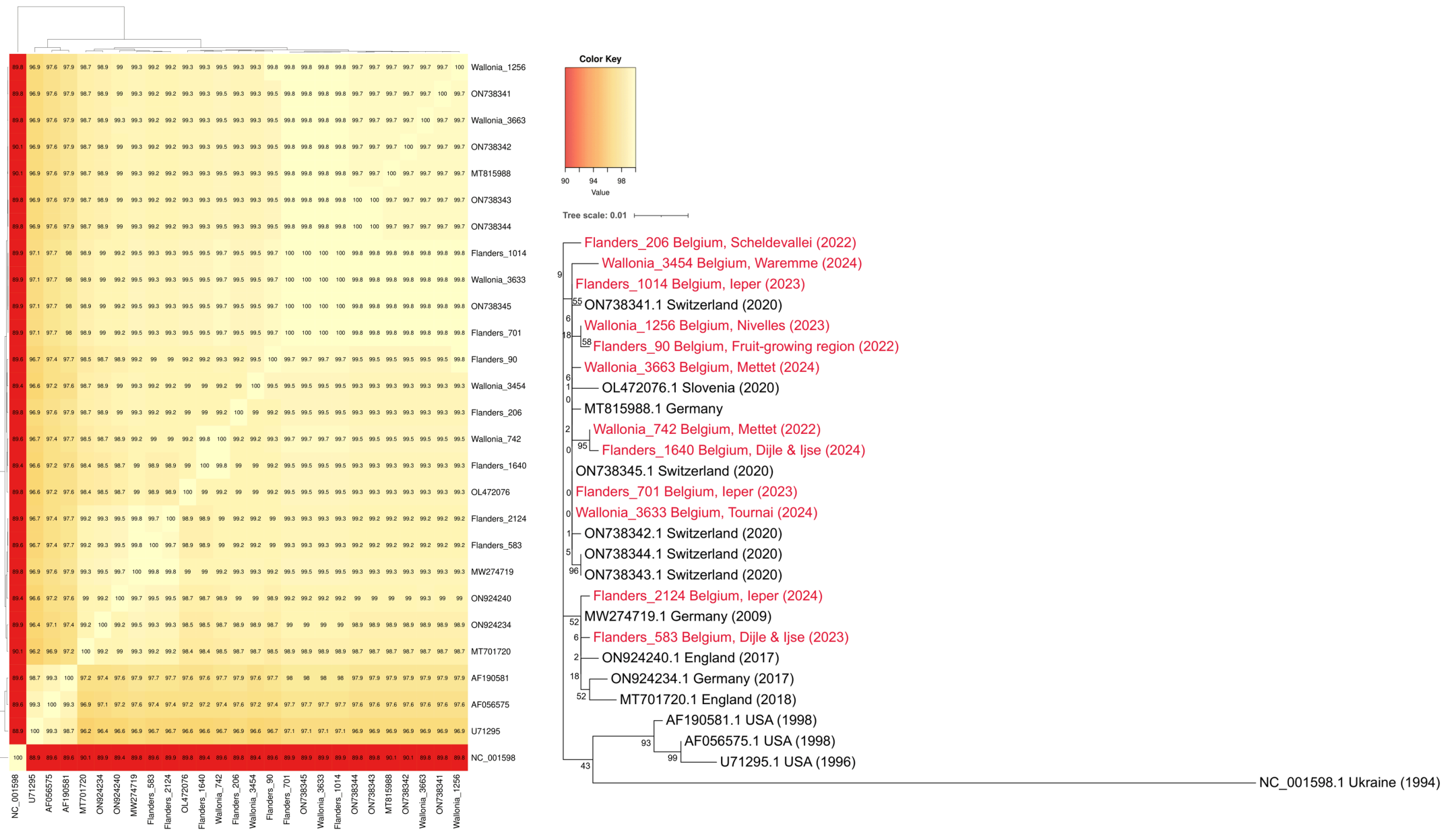


Fig. 1 Pairwise identity matrix (left) and phylogenetic tree (right) based on coat protein (CP) sequences of Belgian beet yellows virus (BYV) isolates and isolates retrieved from public databases. Belgian isolates are highlighted in red.

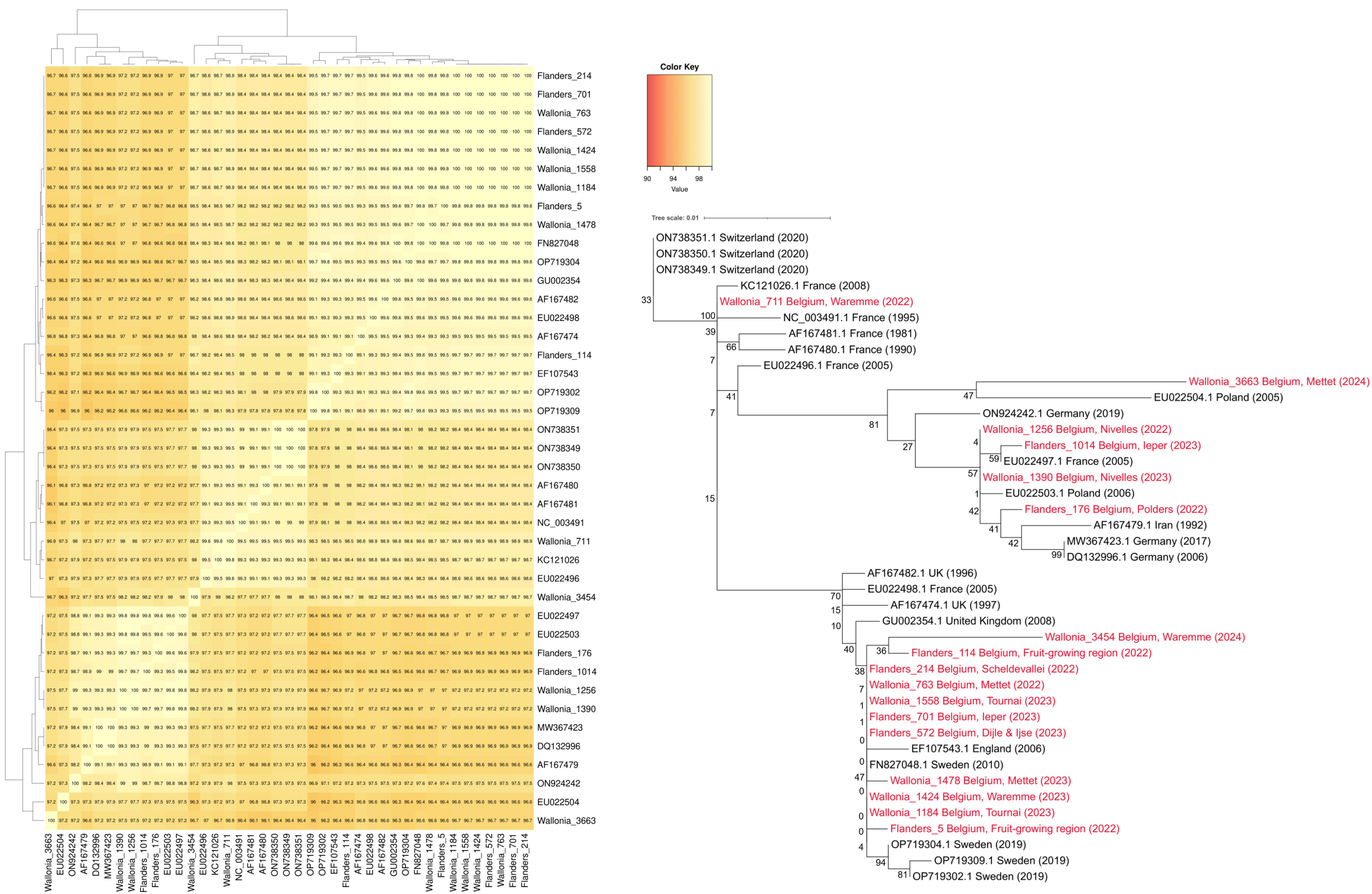


Fig. 2 Pairwise identity matrix (left) and phylogenetic tree (right) based on coat protein (CP) sequences of Belgian beet mild yellowing virus (BMV) isolates and isolates retrieved from public databases. Belgian isolates are highlighted in red.

