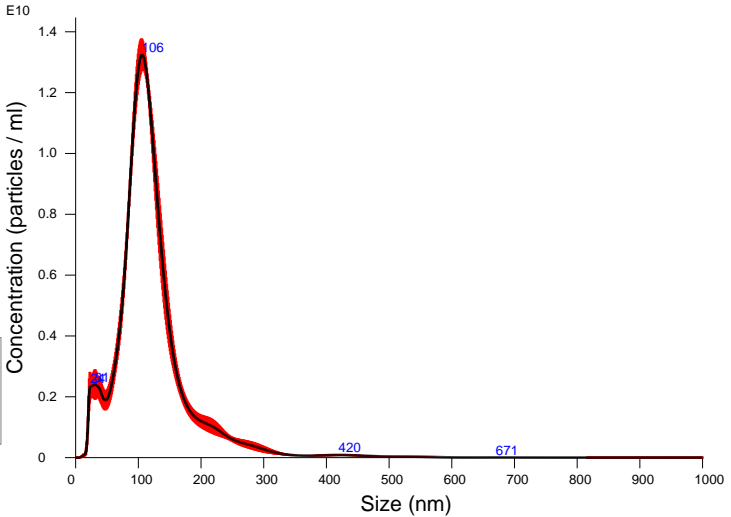
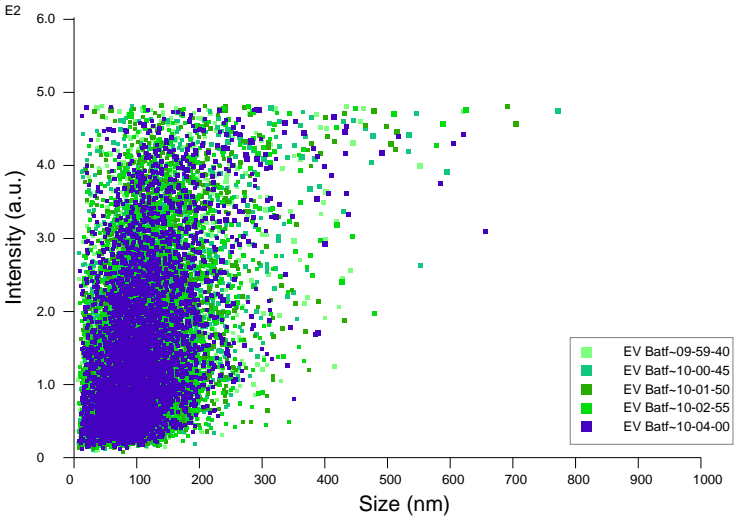


FTLA Concentration / Size graph for Experiment:
EV Batf3 1000x 5 60 120 2024-12-18 09-56-29



Averaged FTLA Concentration / Size for Experiment:
EV Batf3 1000x 5 60 120 2024-12-18 09-56-29
Error bars indicate + / - 1 standard error of the mean

<div>Included Files</div> <div>EV Batf3 1000x 5 60 120 2024-12-18 09-59-40 EV Batf3 1000x 5 60 120 2024-12-18 10-00-45 EV Batf3 1000x 5 60 120 2024-12-18 10-01-50 EV Batf3 1000x 5 60 120 2024-12-18 10-02-55 EV Batf3 1000x 5 60 120 2024-12-18 10-04-00</div> <div>Details</div> <div><div>NTA Version:NTA 3.4 - Sample Assistant Build 3.4.4 - SA</div><div>Script Used:SOP Standard Measurement 09-56-04AM 18~</div><div>Time Captured:09:56:29 18/12/2024</div><div>Operator:Jitka</div><div>Pre-treatment:</div><div>Sample Name:</div><div>Diluent:pbs</div><div>Remarks:</div></div> <div>Capture Settings</div> <div><div>Camera Type:sCMOS</div><div>Laser Type:Blue405</div><div>Camera Level:12</div><div>Slider Shutter:1200</div><div>Slider Gain:146</div><div>FPS:25.0</div><div>Number of Frames:1498</div><div>Temperature:25.0 - 25.0 °C</div><div>Viscosity:1.0 cP</div><div>Dilution factor:1 x 10e3</div><div>Syringe Pump Speed:120</div></div> <div>Analysis Settings</div> <div><div>Detect Threshold:5</div><div>Blur Size:Auto</div><div>Max Jump Distance:Auto: 23.9 - 26.2 pix</div></div>	<div>Results</div> <div>Stats: Merged Data</div> <div><div>Mean:121.9 nm</div><div>Mode:106.0 nm</div><div>SD:63.0 nm</div><div>D10:64.7 nm</div><div>D50:111.2 nm</div><div>D90:187.3 nm</div></div> <div>Stats: Mean +/- Standard Error</div> <div><div>Mean:121.9 +/- 1.1 nm</div><div>Mode:109.0 +/- 3.1 nm</div><div>SD:63.0 +/- 1.0 nm</div><div>D10:64.7 +/- 1.5 nm</div><div>D50:111.2 +/- 1.1 nm</div><div>D90:187.5 +/- 5.7 nm</div></div> <div>Concentration (Upgrade): 1.05e+12 +/- 2.43e+10 particles/ml 84.8 +/- 2.2 particles/frame 83.8 +/- 1.2 centres/frame</div>
--	---



Script Used: (Full Text):

SOP Standard Measurement 09-56-04AM 18Dec2024.txt