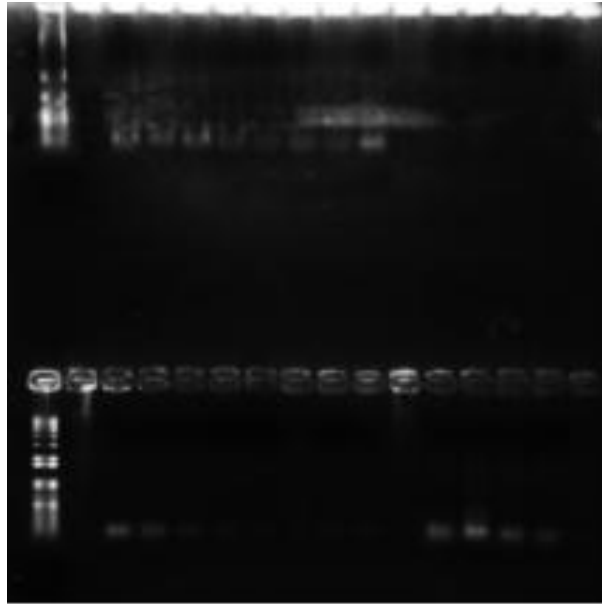
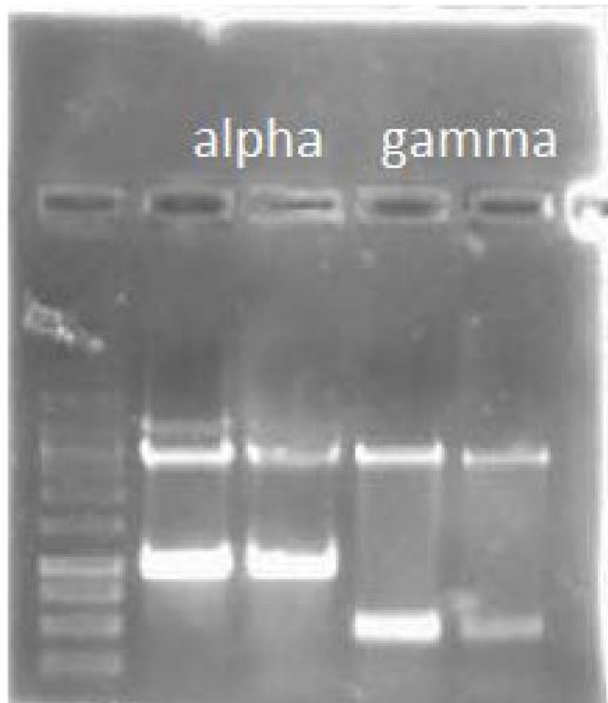


Supplementary file for gel image

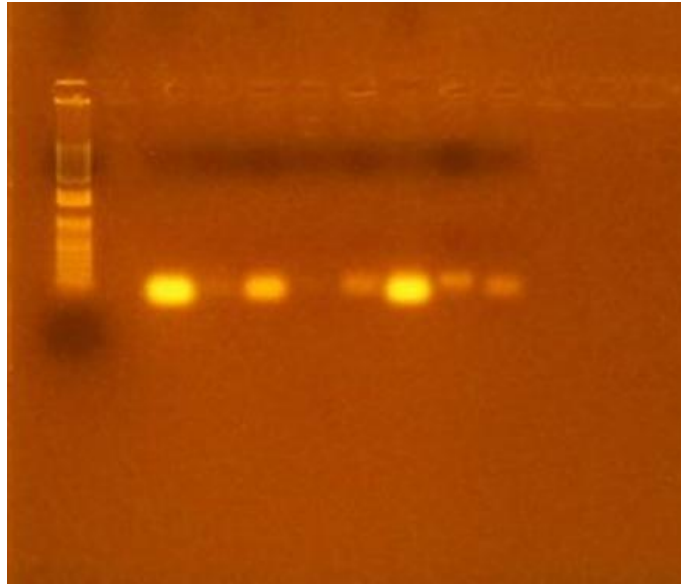


6(a)

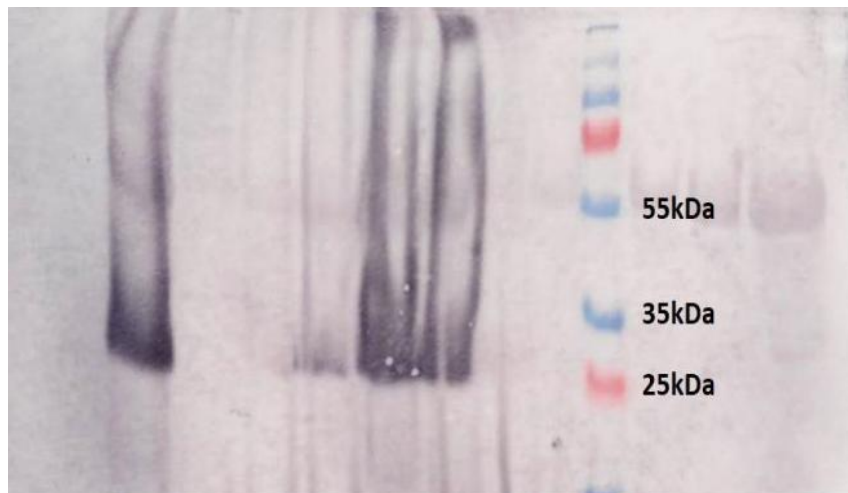


6(b)

Fig. 6: (a) PCR confirmation of the presence of the target gene in *Agrobacterium* LBA4404 using specific primers: Lane 3-7 for alpha zein; lane 8 to 10 for gamma zein; (b) The agarose gel after the electrophoresis of the digestion mix. Lane 1 is the ladder; Lane 2 and 3 are construct alpha, and Lane 4 and 5 are construct gamma.



7(b)



7(c)

Fig. 7: (b) PCR analysis for the amplification of alpha zein, and gamma zein gene in *L. esculentum*. In this picture lane 1=ladder 1kb. Lane 3 to 8 for alpha zein; and 10 for gamma zein gene; (c) The recombinant proteins were detected using an anti-His-tag antibody (γ = gamma zein fusion, and α = alpha zein fusion. Ctrl=control).