

Supplementary material for: Impact of maternal history on metabolic and cognitive phenotypes in Alzheimer’s disease–related mild cognitive impairment

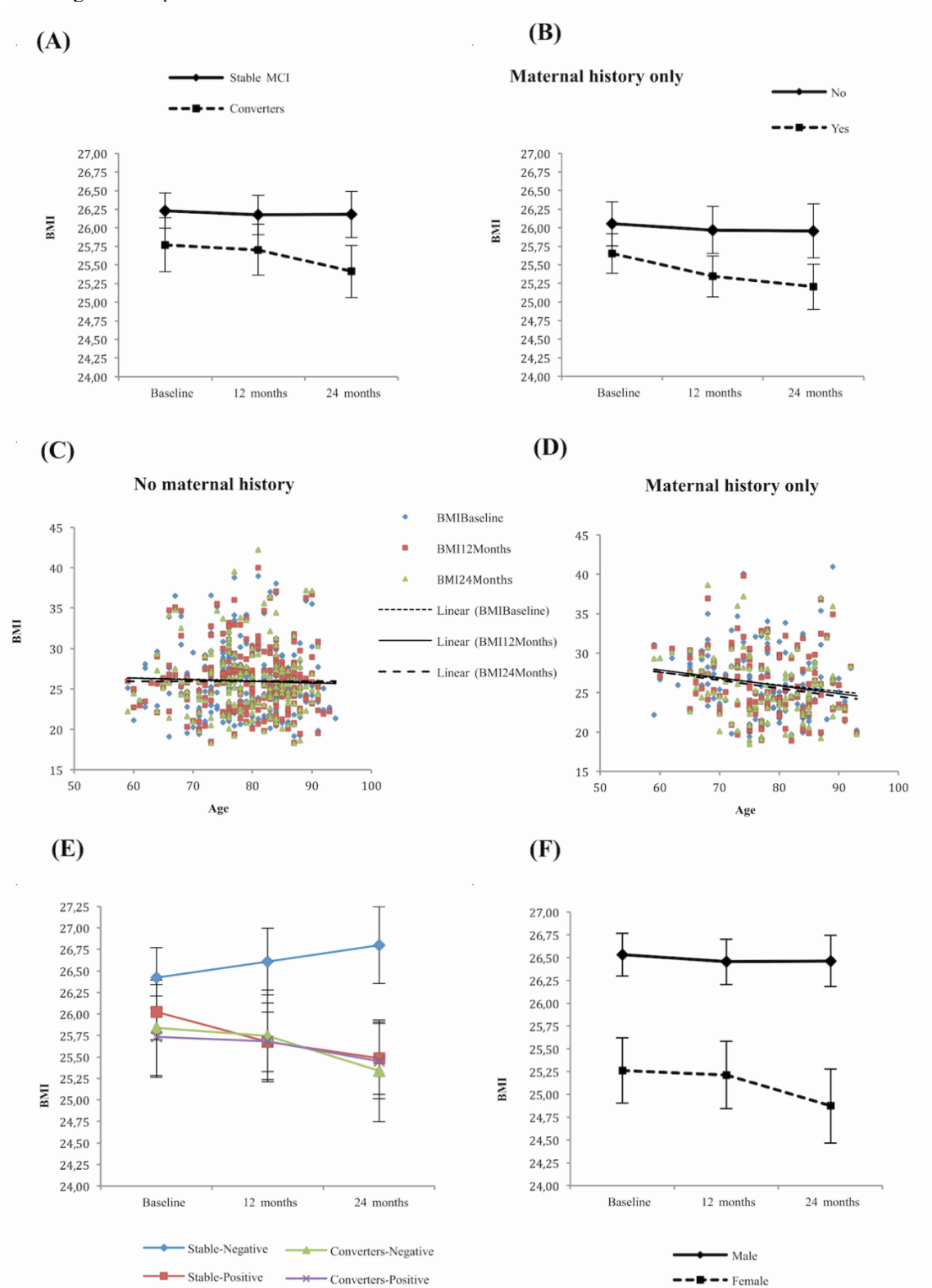
Table of contents

Figure S1. Longitudinal body mass index trajectories page 2

Figure S2. Longitudinal memory trajectories page 3

Figure S3. Longitudinal executive function trajectories page 4

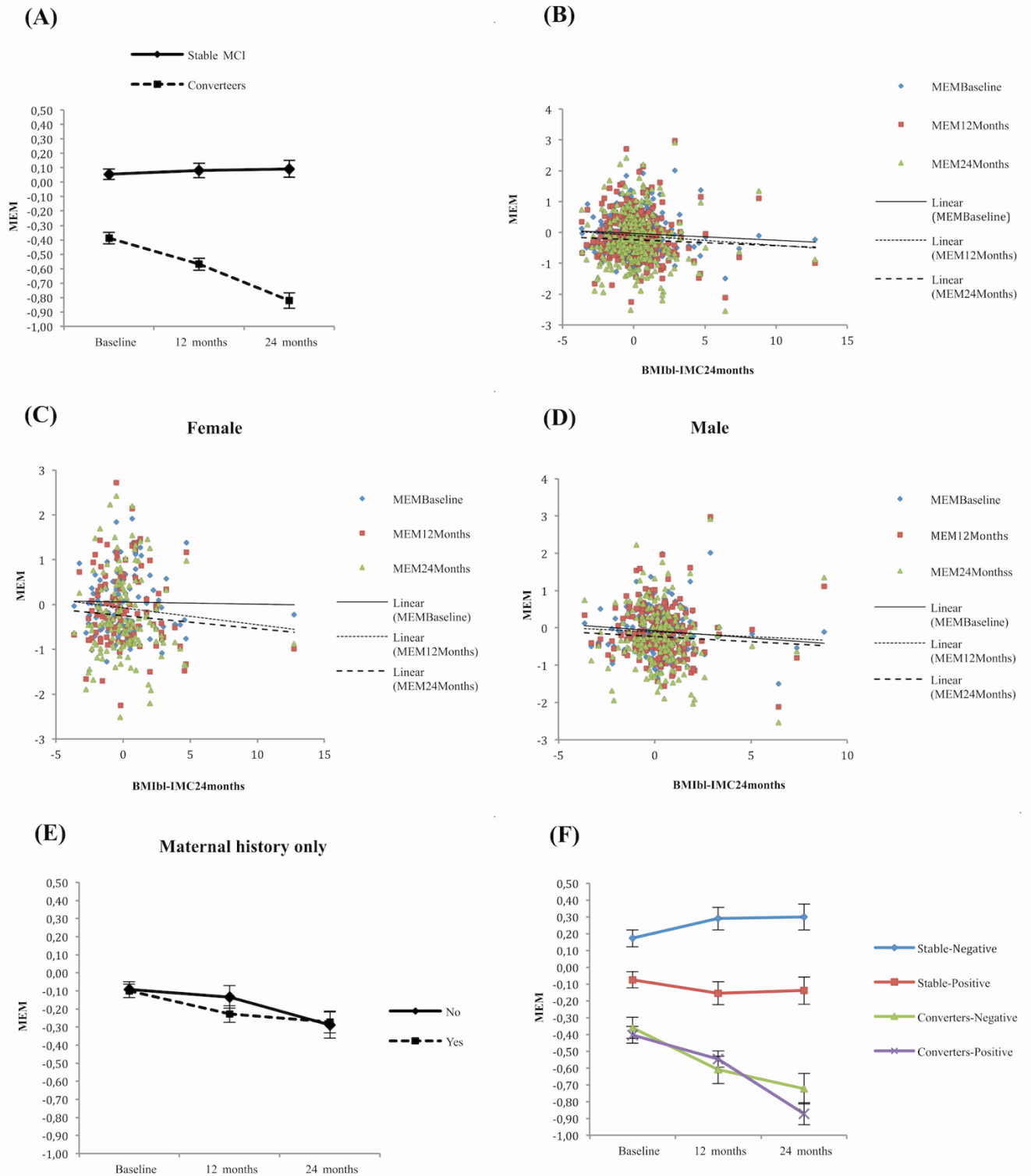
Figure S1. Supplementary longitudinal trajectories of body mass index over 24 months in individuals with mild cognitive impairment.



(A) Mean BMI trajectories according to conversion status (stable MCI vs converters to Alzheimer's disease). **(B)** Mean BMI trajectories stratified by maternal history of Alzheimer's disease (yes vs no). **(C and D)** Mean BMI trajectories stratified by age in participants without maternal history (C) and with maternal history of Alzheimer's disease (D). **(E)** Mean BMI trajectories stratified by APOE4 status. **(F)** Mean BMI trajectories stratified by sex.

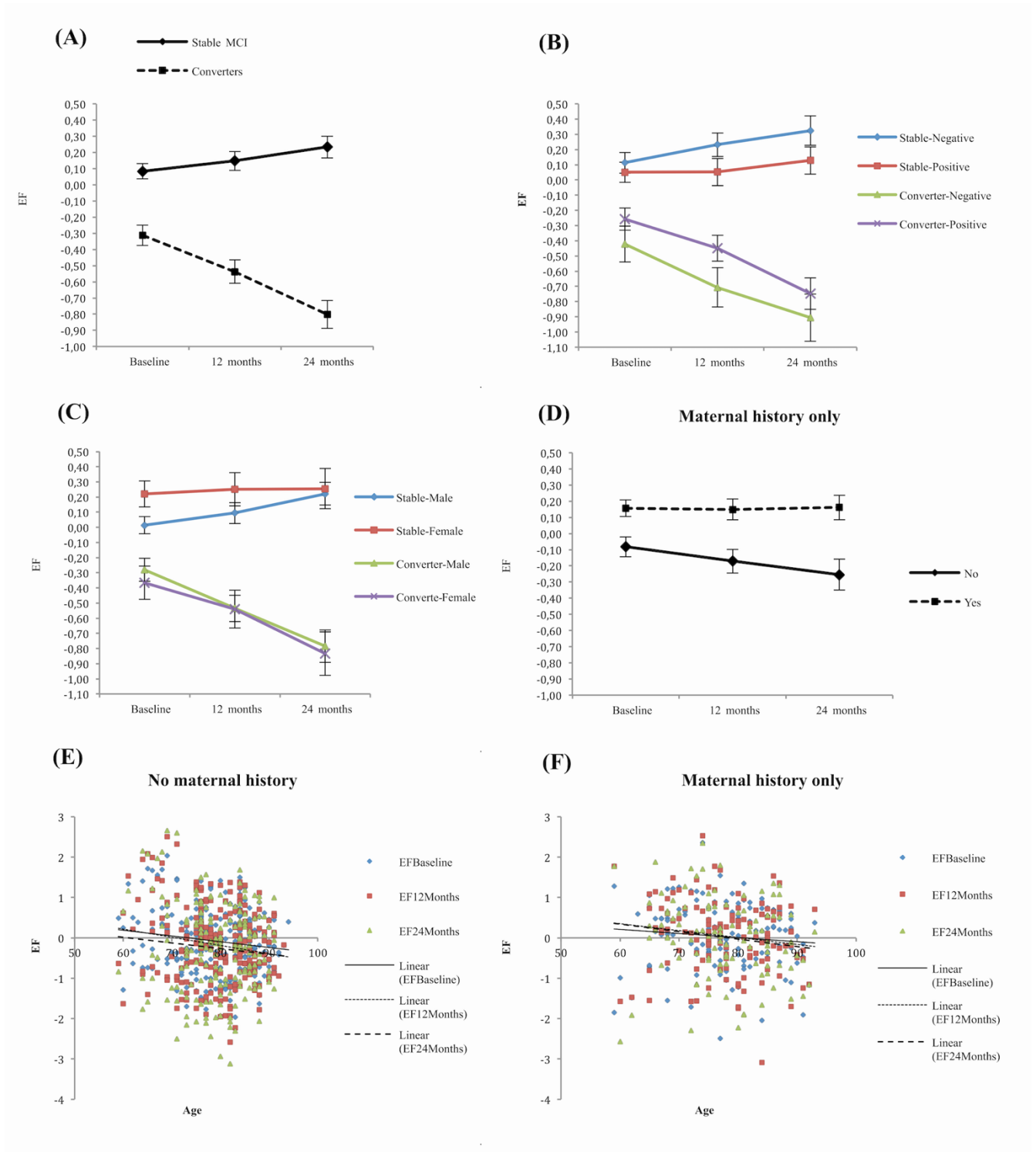
Values represent estimated means with error bars indicating standard errors. These supplementary plots provide additional detail supporting the BMI analyses presented in Figure 1 and Table 3.

Figure S2. Supplementary longitudinal memory trajectories assessed with the ADNI-Mem composite score.



(A) Mean longitudinal memory trajectories according to conversion status. **(B)** Memory trajectories stratified by degree of body mass index change between baseline and 24 months. **(C and D)** Memory trajectories stratified by BMI change and sex. **(E)** Memory trajectories according to maternal history of Alzheimer's disease. **(F)** Memory trajectories according to APOE4 status in stable and converters. Values represent estimated means with error bars indicating standard errors. These supplementary figures complement the memory results shown in Figure 2A and Table 4.

Figure S3. Supplementary longitudinal executive function trajectories assessed with the ADNI-EF composite score.



(A) Mean longitudinal executive function trajectories according to conversion status. **(B and C)** Executive function trajectories stratified by APOE4 genotype and sex. **(D)** Executive function trajectories according to maternal history of Alzheimer's disease. **(E and F)** Executive function trajectories stratified by age group and maternal history of Alzheimer's disease.

Values represent estimated means with error bars indicating standard errors. These supplementary figures complement the executive function results shown in Figure 2B and Table 4.