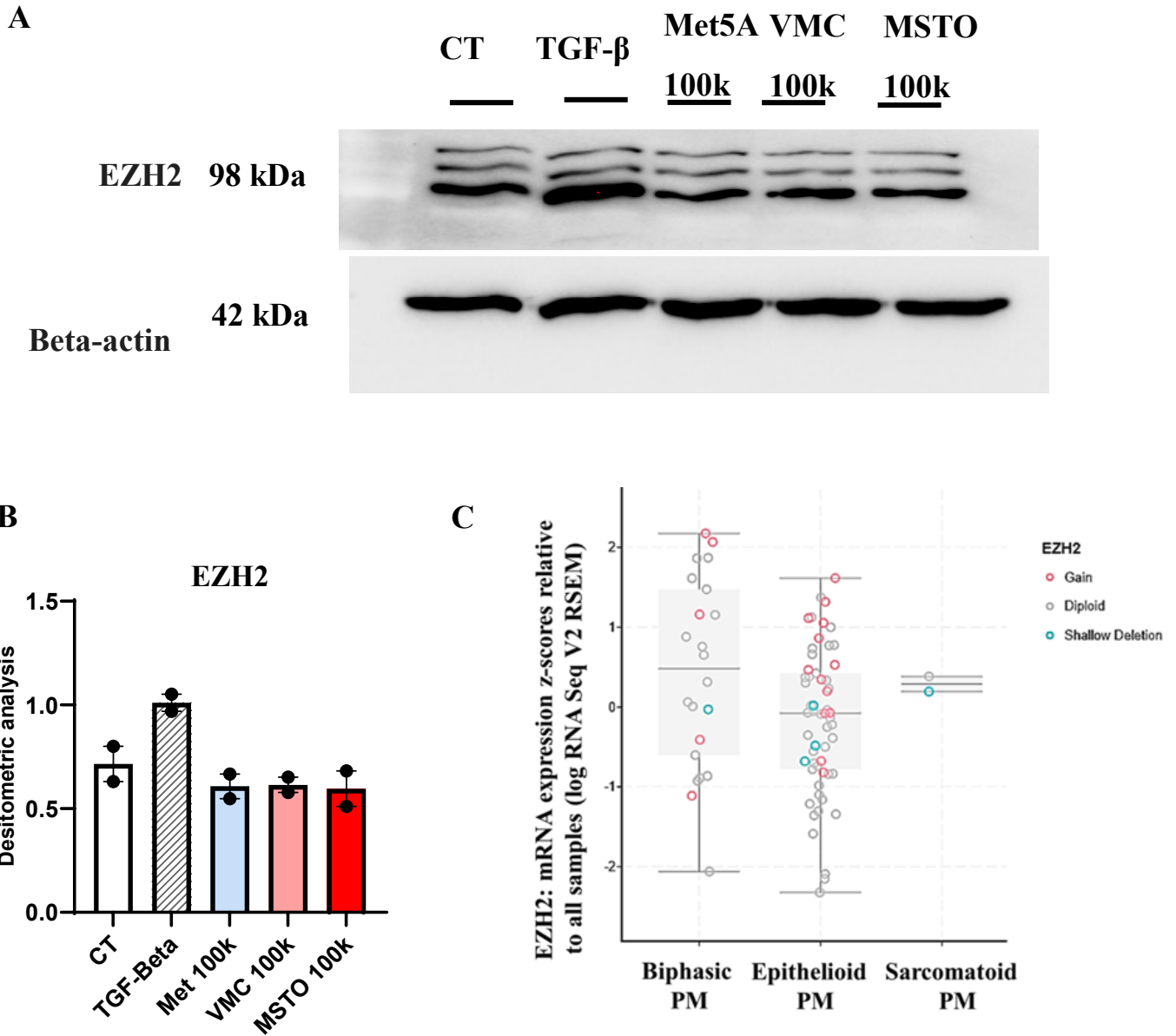


# Figure S11



**Figure S11: A-B) EZH2 expression in Fibroblast (MRC5) treated with 100k EV fraction from epithelioid (VMC23), non-epithelioid (MSTO), and non-malignant control (Met5A) cells.** Western blot analysis band and densitometric analysis for EZH2. CT- Untreated cells; TGF- $\beta$ - treated with TGF- $\beta$ , positive control for EZH2 induction. Data represent mean  $\pm$  SEM of n = 2 biological replicates.

**C) Expression of EZH2 in mesothelioma patients.** The mesothelioma (TCGA, PanCancer Atlas) dataset was assessed. Using the “Query by Gene” function, the gene EZH2 was entered, and mRNA expression z-scores (RNA Seq V2 RSEM) were selected under genomic profiles.