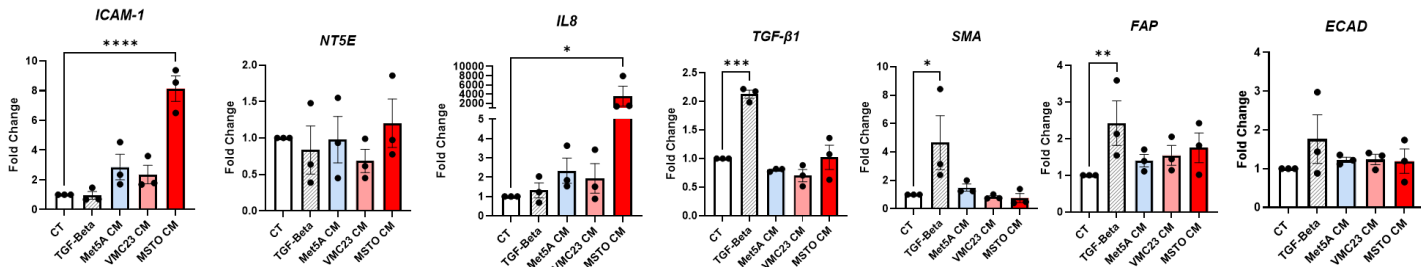


Figure S2

24 hours Treatment



48 hours Treatment

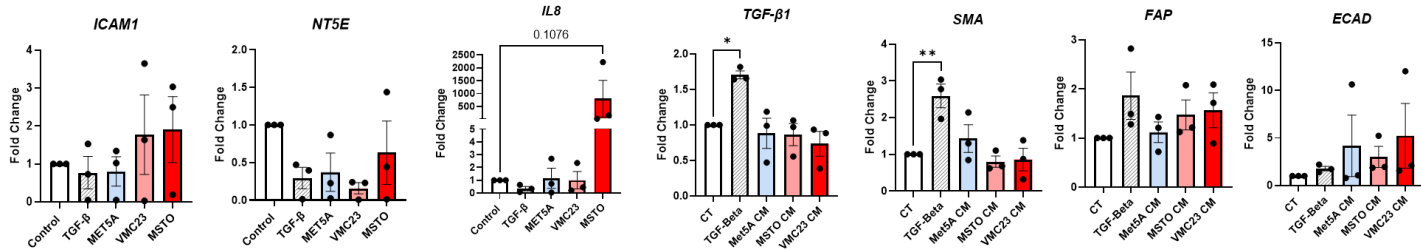


Figure S2: qPCR analysis of cancer-associated fibroblast markers in fibroblasts (MRC5) treated with conditioned media (CM) from epithelioid (VMC23), non-epithelioid (MSTO), and non-malignant control (Met5A) cells: A) 24-hour treatment analysis. B) 48-hour treatment analysis. Significance levels are indicated as \*p<0.05, \*\*p<0.001, \*\*\*p<0.0001, and \*\*\*\*p<0.00001. Data represent mean ± SEM of n = 3 biological replicates.