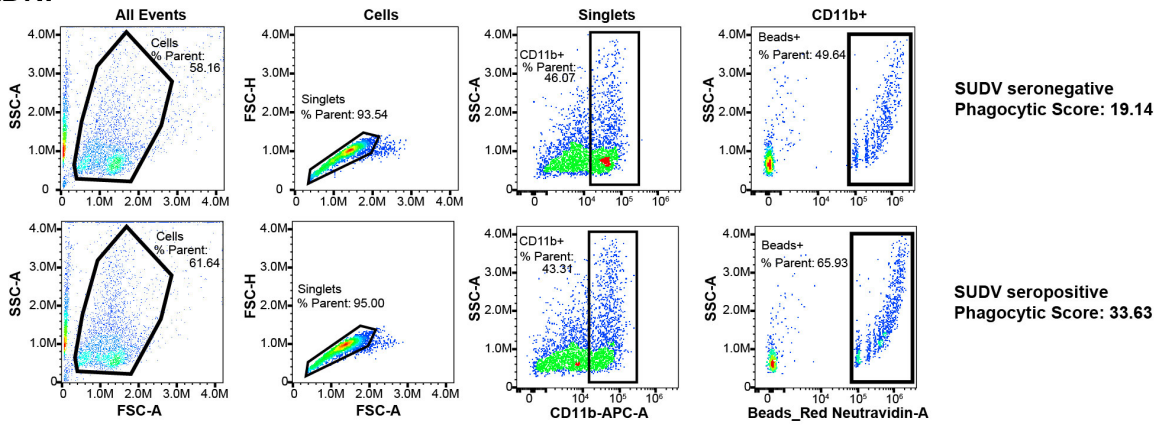
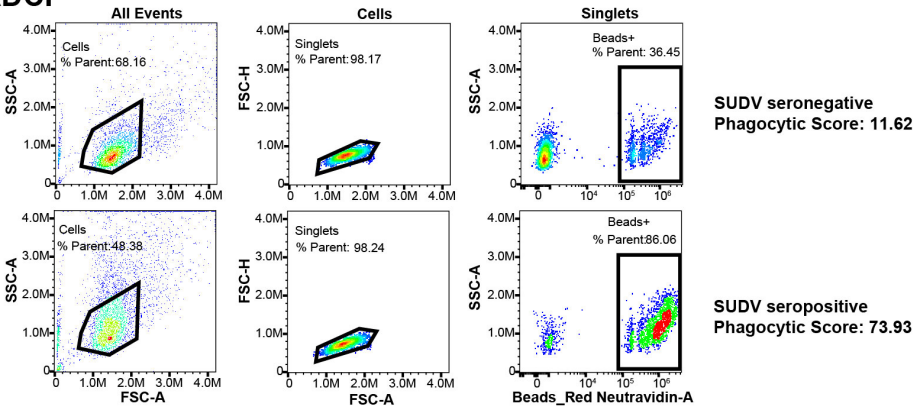


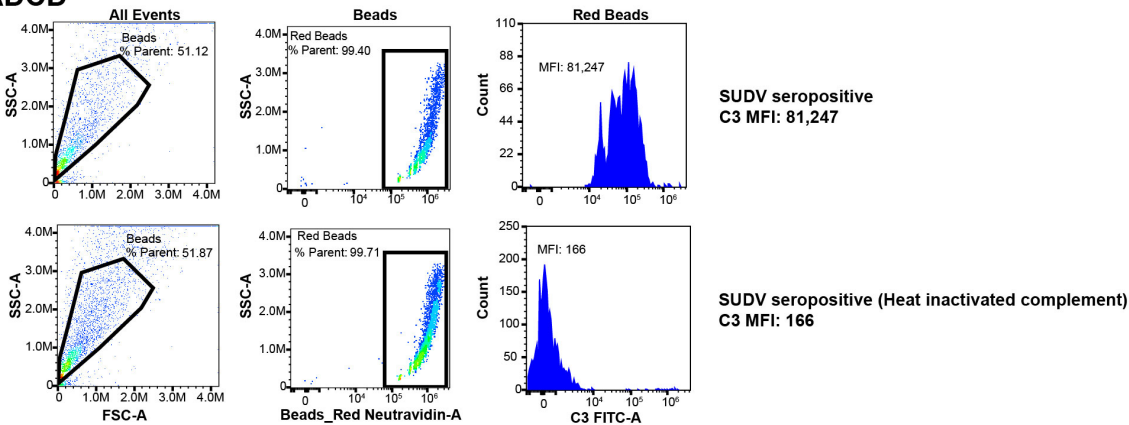
A. ADNP



B. ADCP



C. ADCD



D. ADNKA

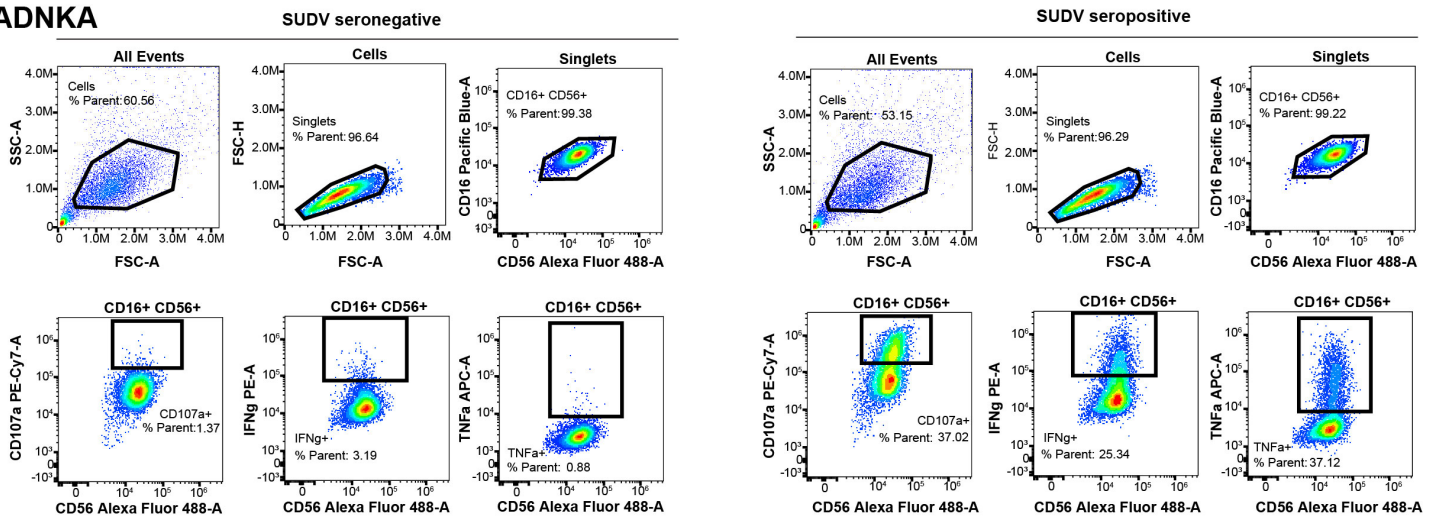


Figure S1. Gating strategy for effector assays.

The gating strategies for ADNP (A), ADCP (B), ADCD (C) and ADNKA (D) are shown for representative SUDV GP seronegative and seropositive samples as indicated.

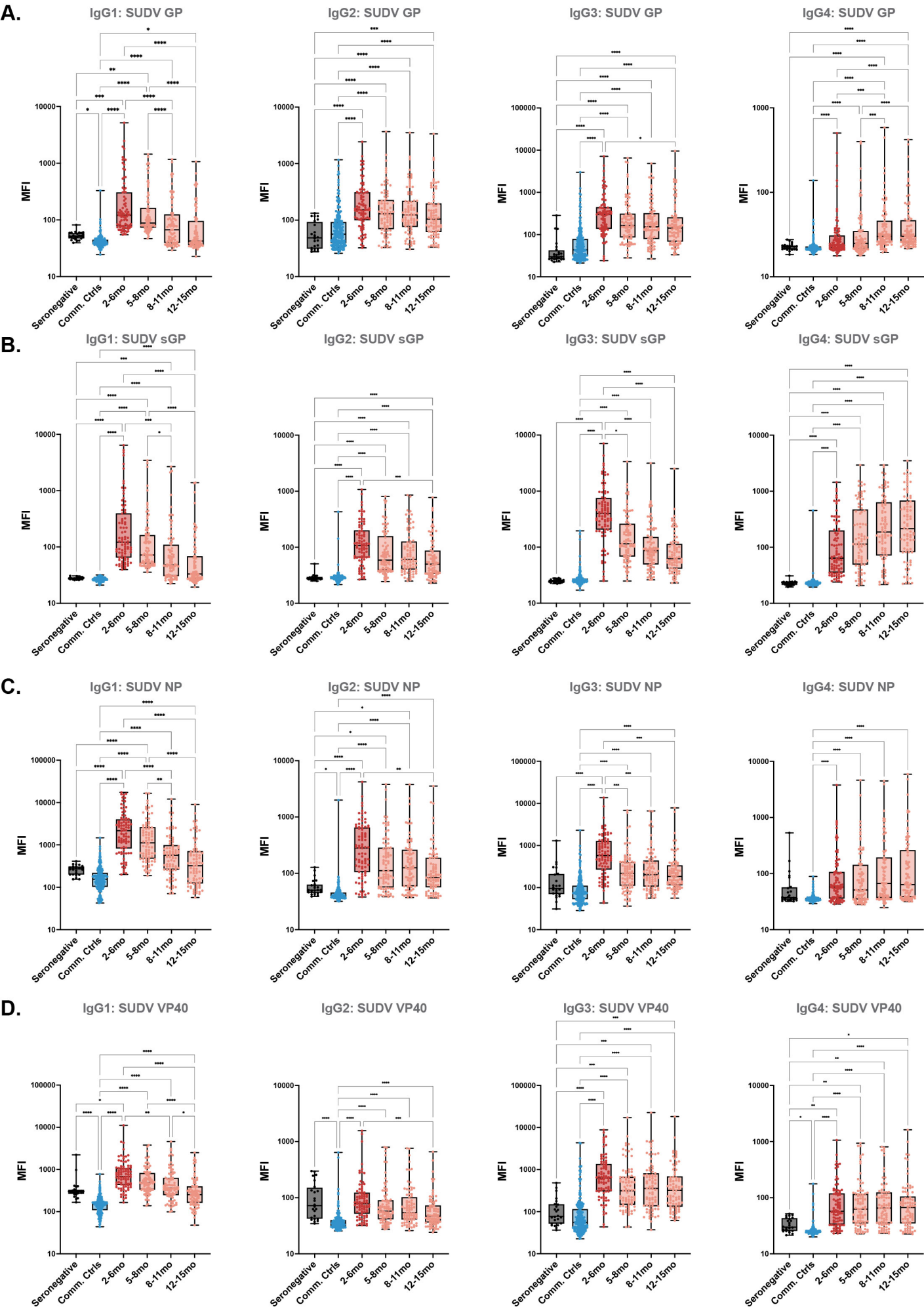


Figure S2. Levels of GP-specific IgG1, IgG2, IgG3, IgG4 (A), sGP-specific IgG1, IgG2, IgG3, IgG4 (B), NP-specific IgG1, IgG2, IgG3, IgG4 (C) and VP40-specific IgG1, IgG2, IgG3, IgG4 (D) were measured in seronegative controls (n=24), Uganda community controls (n=192), and SUDV survivors across 4 time-points. Kruskal-Wallis test with Dunn's correction for multiple comparisons.

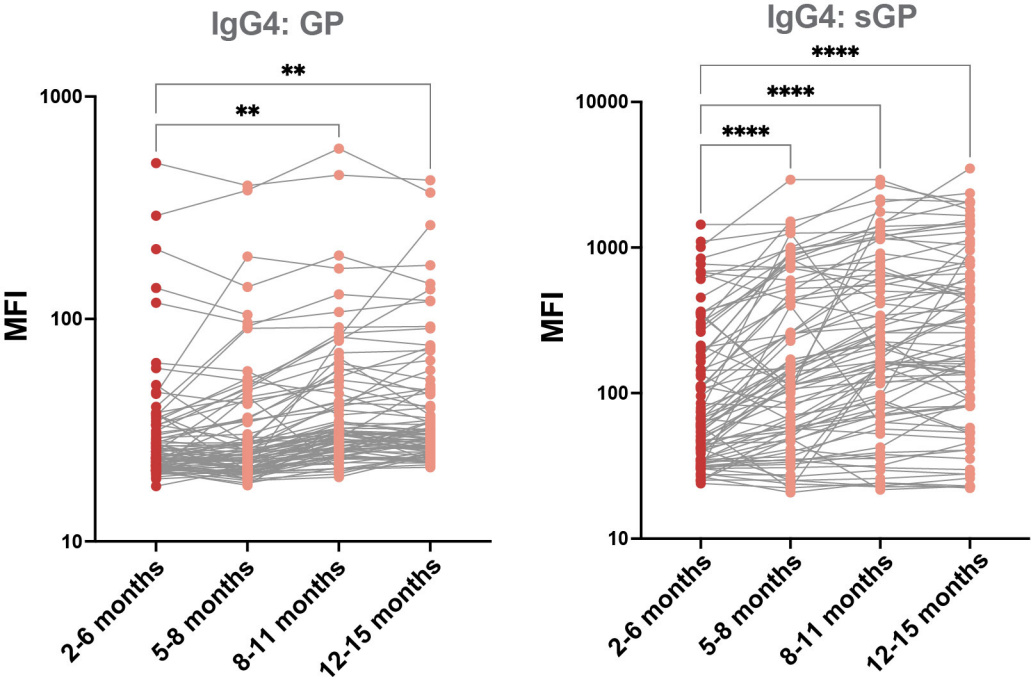


Figure S3. The GP- and sGP-specific IgG4 responses for each survivor is plotted longitudinally across the four timepoints (2-15 months). Mixed-effects analysis with Holm-Sidak's multiple comparison test was used to determine if later timepoints were significantly different from the enrollment (2-6 month) timepoint.

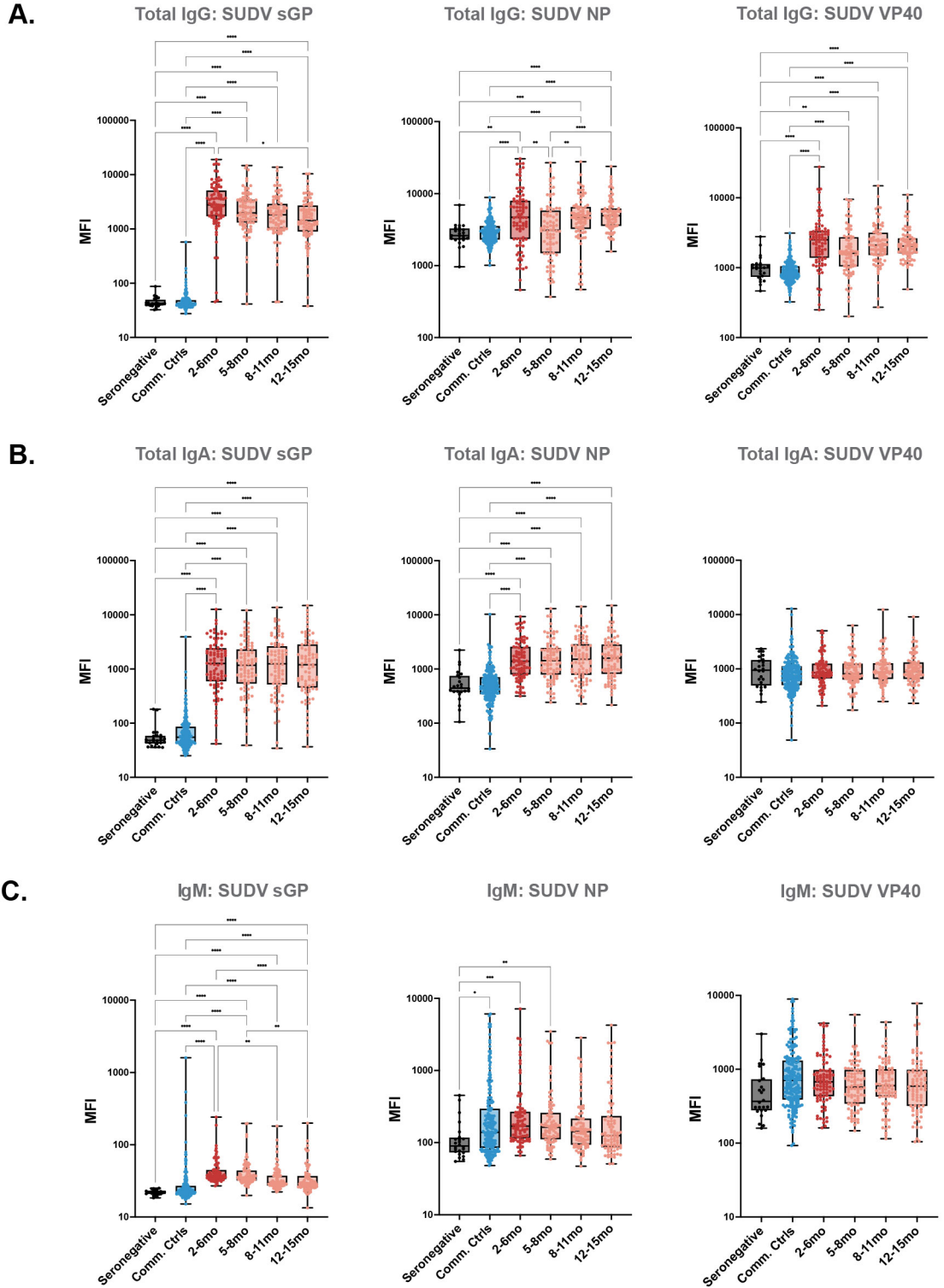


Figure S4. Levels of total IgG (A), total IgA (B), and IgM (C) were measured in seronegative controls (n=24), Uganda community controls (n=192), and SUDV survivors across 4 timepoints. Kruskal-Wallis test with Dunn's correction for multiple comparisons.

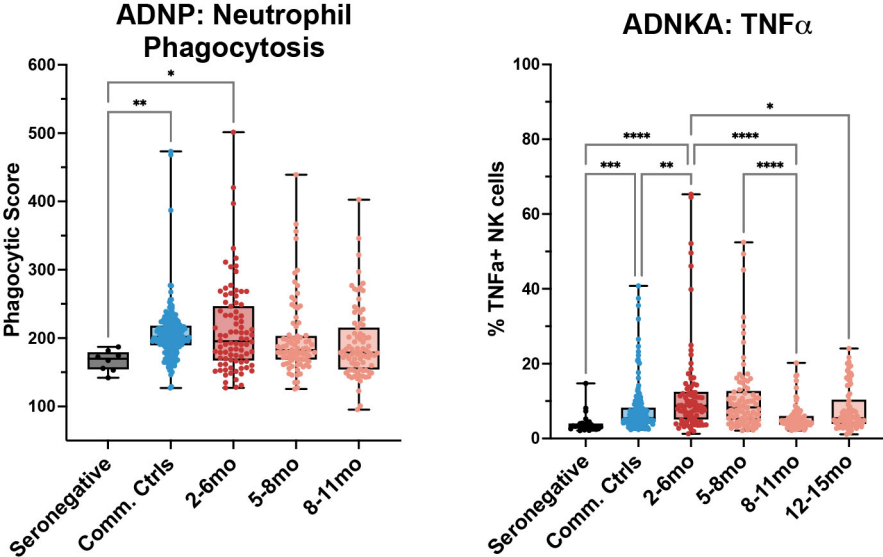


Figure S5. The ability of GP-specific antibodies to induce antibody-mediated neutrophil phagocytosis and antibody-mediated NK cell secretion of TNF α were measured for the indicated groups. Kruskal-Wallis test with Dunn's correction for multiple comparisons.

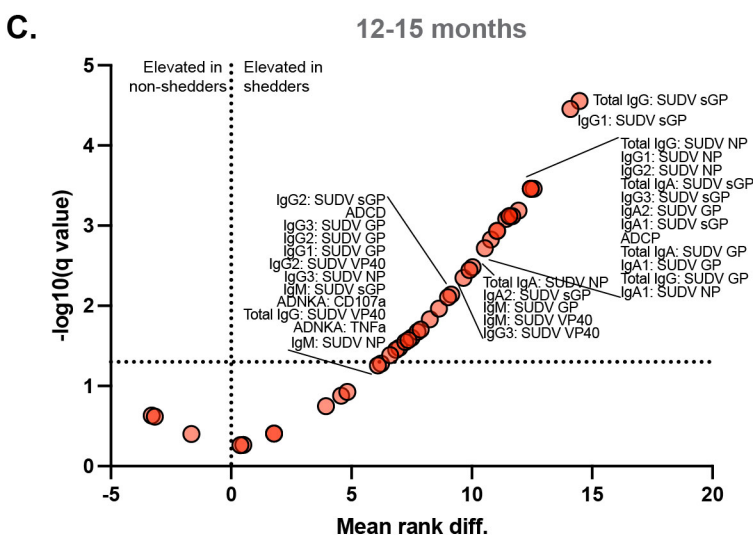
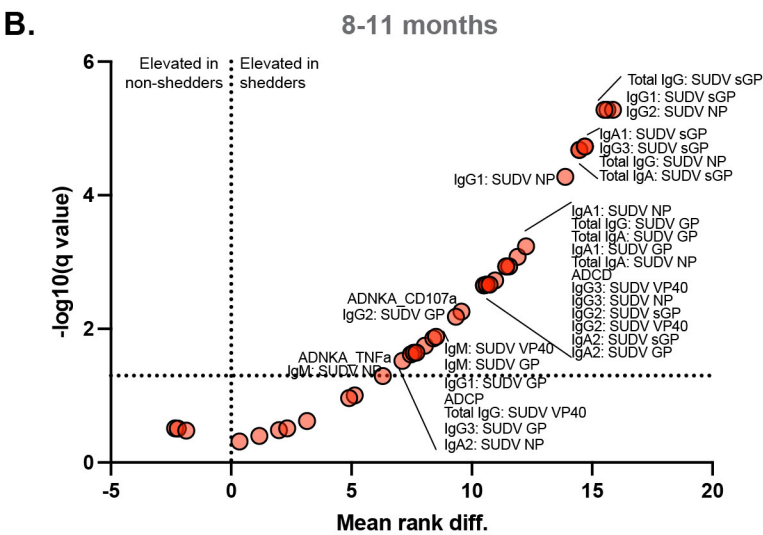
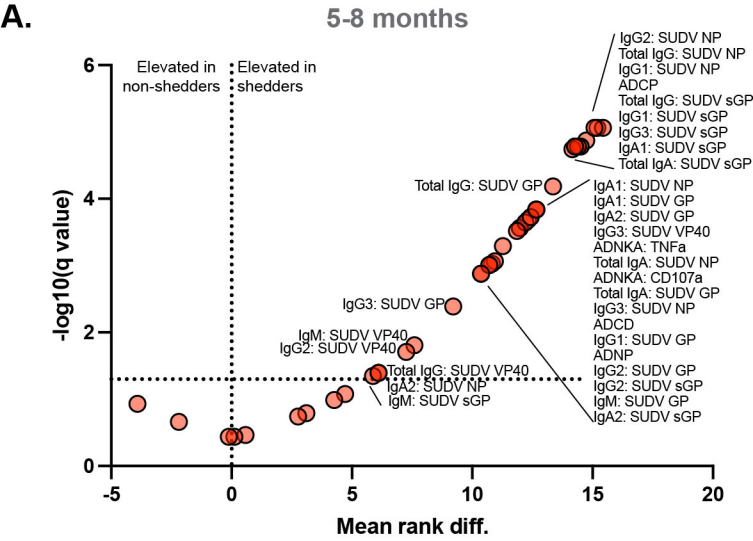


Figure S6. Volcano plot of a multiple Mann-Whitney tests across all SUDV-associated antibody features at the 5-8 months post-infection (A), 8-11 months post-infection (B), and 12-15 months post-infection (C) between survivors with and without persistent viral RNA. The dashed line on the y-axis ($\log_{10} q \text{ value} = 1.3$) indicates a $q\text{-value} < 0.05$ (corrected for multiple comparisons). The statistically significant features are indicated on graph, with features to the right are elevated in survivors with persistent viral RNA compared to those without.

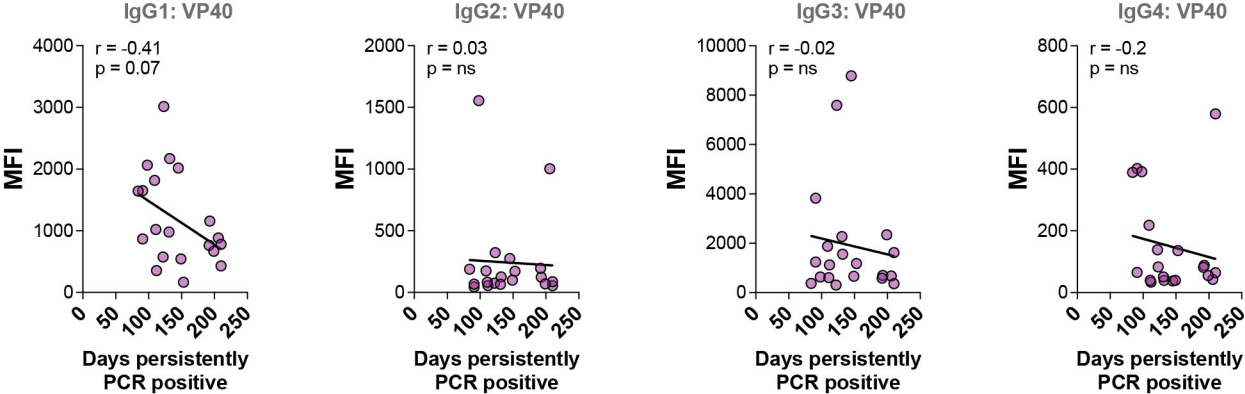


Figure S7. Spearman correlation analyses were performed between levels of VP40-specific IgG1, IgG2, IgG3, IgG4 at 2-6 months post-infection and days persistently RNA positive in survivors with persistent viral RNA. The spearman rho and p value are indicated on each graph.