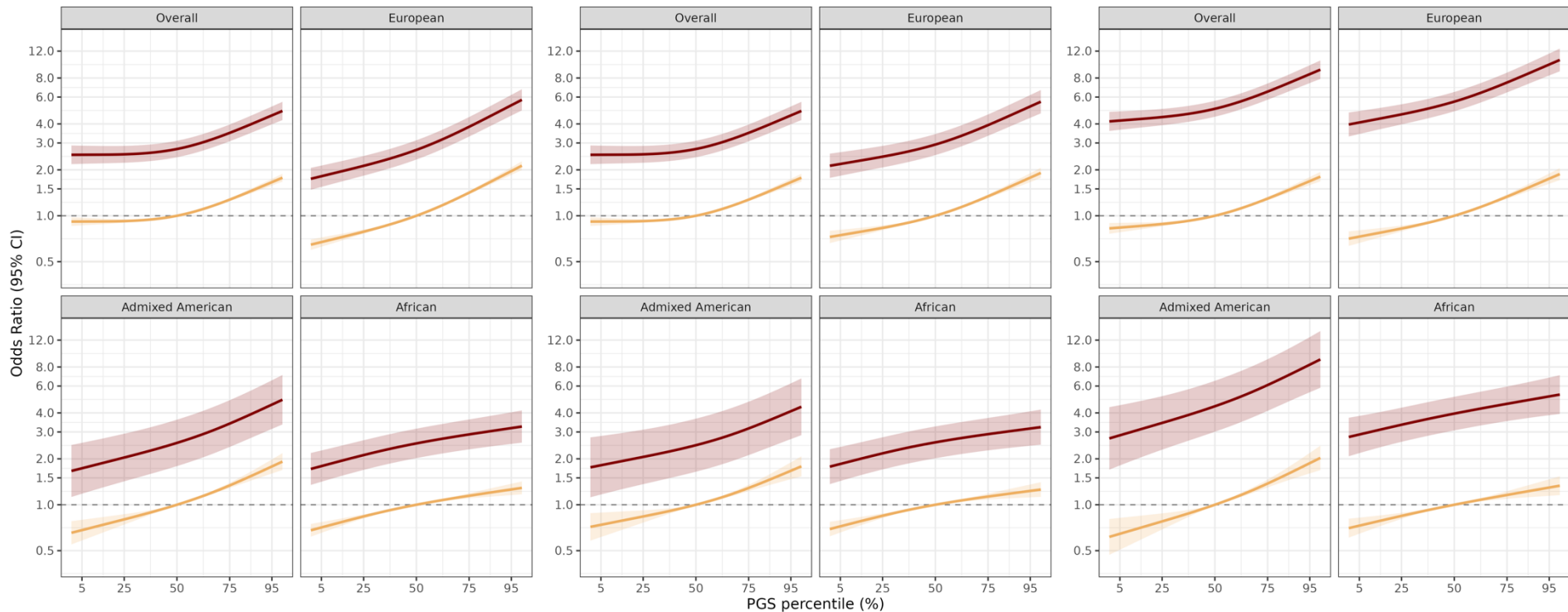


All-cause Heart Failure**Non-ischemic Heart Failure****Non-ischemic Cardiomyopathy**

— Non-carrier — Carrier

**Supplemental Figure S2. Continuous polygenic risk and cardiomyopathy outcomes by monogenic status and ancestry**

Association of polygenic score (PGS) percentiles with risk of (A) all-cause heart failure (ACHF), (B) non-ischemic heart failure (NIHF), and (C) non-ischemic cardiomyopathy (NICM), stratified by monogenic variant carrier status (carriers vs non-carriers) across the overall cohort and within genetic ancestry groups (European, Admixed American, and African). Risk estimates are shown across the full distribution of PGS percentiles.