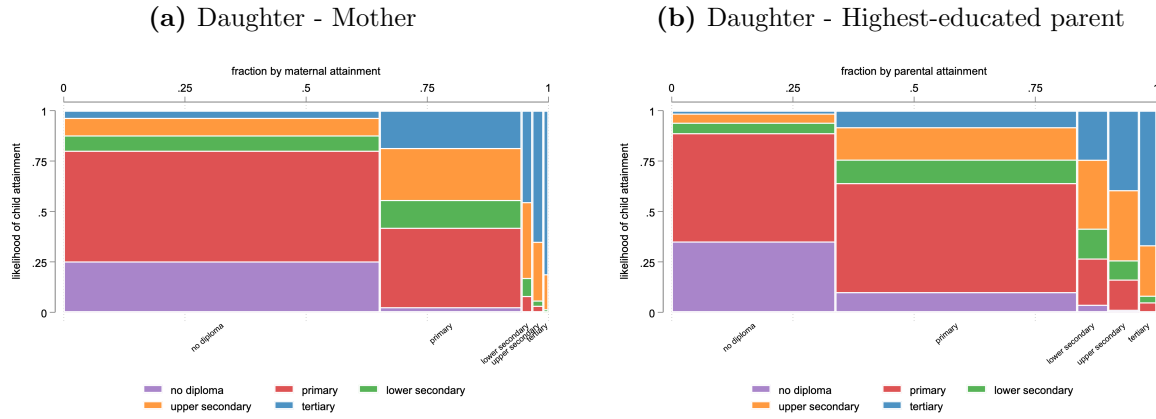


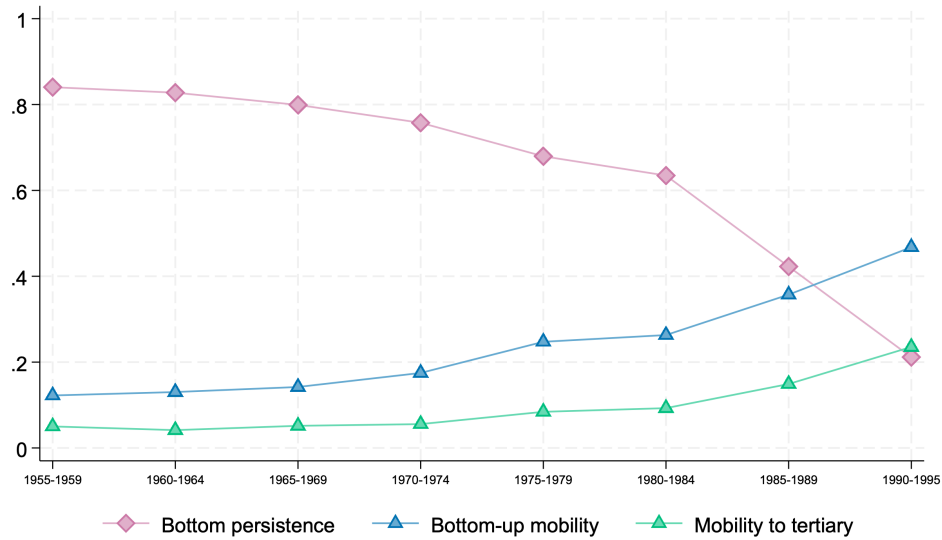
Appendix

Figure A1: Transition Matrices



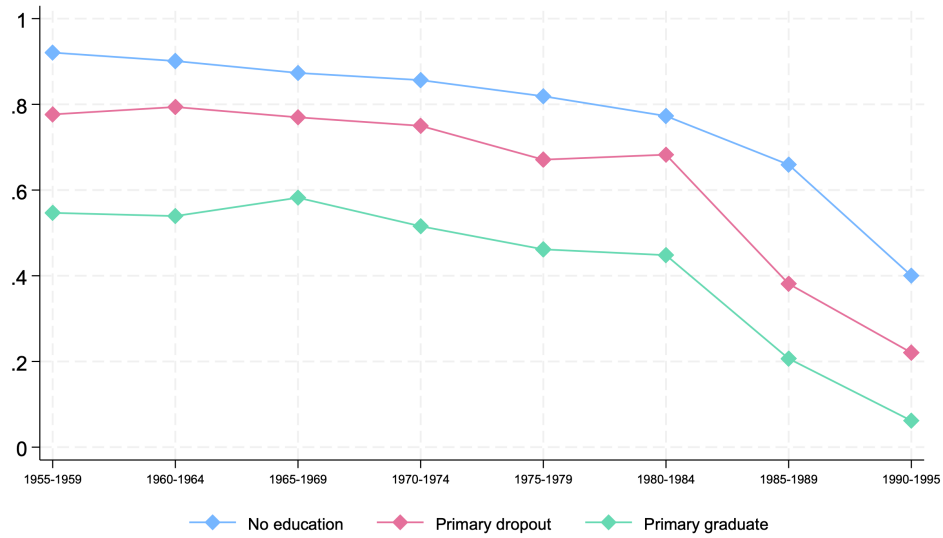
Notes: Both samples are pooled from 2003, 2008, 2013, and 2018 TDHS. Panel A includes mothers and their daughters while Panel B consists of the highest-educated parents and their daughters in the household. In both samples, daughters were born between 1955-1995, at least 23 at the survey year, resided in Turkiye at age 12. All statistics are calculated using sampling weights.

Figure A2: Transition Probabilities across Cohorts with Mobility to Tertiary



Notes: The figure reports cohort-specific transition probabilities for daughters born 1955-1995 who are aged at least 23 at interview, resided in Turkiye at age 12, and whose mothers attained at most primary schooling. Each point is the weighted mean within 5-year birth-cohort bins, pooling all survey waves used in the analysis. Bottom persistence is the probability of attaining at most primary schooling conditional on having a low-educated mother. Bottom-up mobility is the probability of attaining at least upper secondary schooling conditional on having a low-educated mother. Mobility to tertiary is the probability of attaining at least tertiary education conditional on having a low-educated mother.

Figure A3: Bottom Persistence by Maternal Education



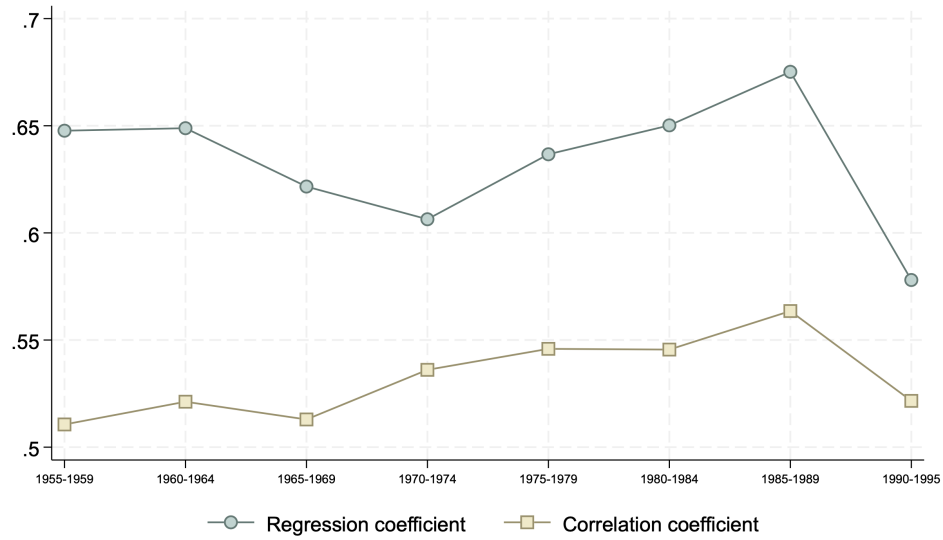
Notes: The figure reports cohort-specific transition probabilities for daughters born 1955-1995 who are aged at least 23 at interview, resided in Turkiye at age 12, and whose mothers attained at most primary schooling. Each point is the weighted mean within 5-year birth-cohort bins, pooling all survey waves used in the analysis.

Figure A4: Transition Probabilities across Cohorts with Highest-educated Parent



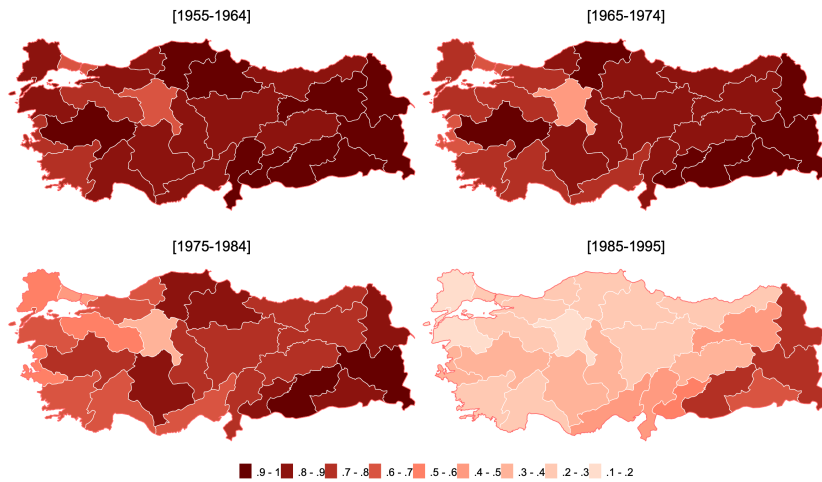
Notes: The figure reports cohort-specific transition probabilities for daughters born 1955-1995 who are aged at least 23 at interview, resided in Turkiye at age 12, and whose parents attained at most primary schooling. Each point is the weighted mean within 5-year birth-cohort bins, pooling all survey waves used in the analysis.

Figure A5: Relative Mobility across Cohorts with Highest-educated Parent



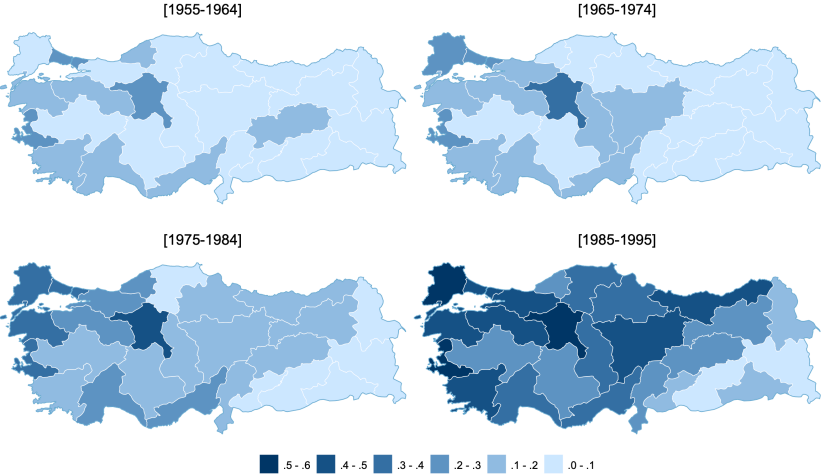
Notes: The figure reports cohort-specific measures of relative intergenerational educational mobility for daughters born 1955-1995 who are aged at least 23 at interview, and resided in Turkiye at age 12. Each point corresponds to estimates computed separately within 5-year birth-cohort bins, netting out survey-wave fixed effects and age. Confidence intervals are calculated using the bootstrap.

Figure A6: Regional Distribution of Bottom Persistence with Highest-educated Parent



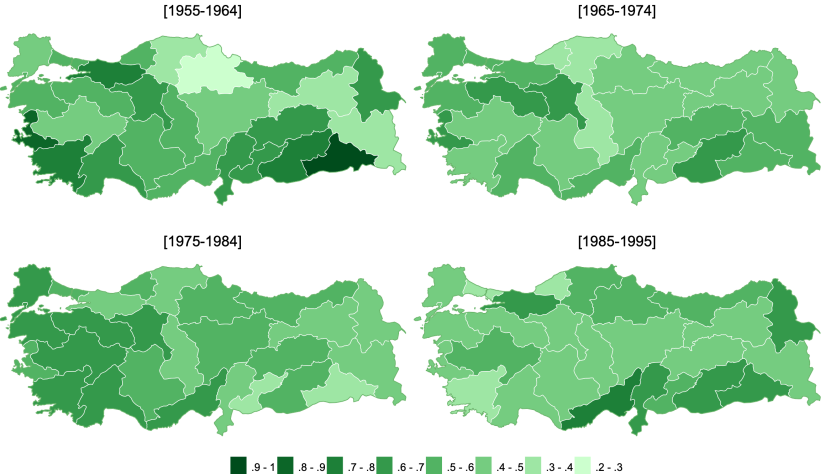
Notes: Each panel reports region-by-cohort estimates for 10-year birth-cohort bins. Individuals are assigned to regions using place of residence at age 12 and regions correspond to NUTS-2 statistical regions. All moments are computed using TDHS sampling weights. Darker shades indicate higher values, and bin cutoffs are held constant across cohorts for comparability.

Figure A7: Regional Distribution of Bottom-up Mobility with Highest-educated Parent



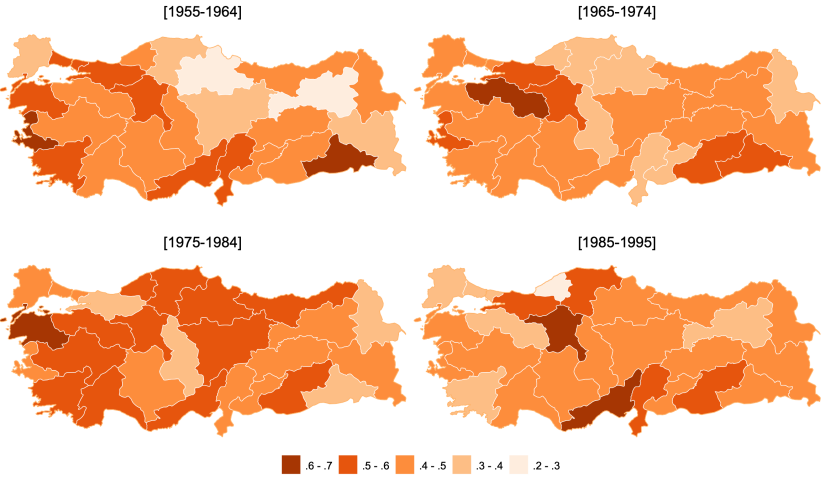
Notes: Each panel reports region-by-cohort estimates for 10-year birth-cohort bins. Individuals are assigned to regions using place of residence at age 12 and regions correspond to NUTS-2 statistical regions. All moments are computed using TDHS sampling weights. Darker shades indicate higher values, and bin cutoffs are held constant across cohorts for comparability.

Figure A8: Regional Distribution of Regression Coefficient with Highest-educated Parent



Notes: Each panel reports region-by-cohort estimates for 10-year birth-cohort bins. Individuals are assigned to regions using place of residence at age 12 and regions correspond to NUTS-2 statistical regions. Darker shades indicate lower mobility, and bin cutoffs are held constant across cohorts for comparability.

Figure A9: Regional Distribution of Correlation Coefficient with Highest-educated Parent



Notes: Each panel reports region-by-cohort estimates for 10-year birth-cohort bins. Individuals are assigned to regions using place of residence at age 12 and regions correspond to NUTS-2 statistical regions. Darker shades indicate lower mobility, and bin cutoffs are held constant across cohorts for comparability.

Table A1: Descriptive Statistics: Daughters and Highest-educated Parent

	A. Daughter			B. Highest-Educated Parent		
	Mean	St. dev.	# of obs.	Mean	St. dev.	# of obs.
Years of schooling	6.64	4.38	26,425	4.40	3.65	26,425
Low educated (%)	64.86	47.74	26,425	83.64	36.99	26,425
High educated (%)	25.90	43.81	26,425	9.95	29.94	26,425
Age	35.39	7.46	26,425			

Notes: The sample is pooled from 2003, 2008, 2013, and 2018 TDHS. It includes the highest-educated parents in the household and their daughters who were born between 1955-1995, at least 23 at the survey year, resided in Turkiye at age 12. All statistics are calculated using sampling weights.