

Incidence, Prevalence, and Survival Outcomes of Patients with Myeloproliferative Neoplasms in the United States: a SEER database analysis, years 2001-2021

Contents

Table S1: ICD-O-3 codes used to identify AML and MDS patients

Table S2: Conversion Factor Formula for Calculation of Total Estimated US Prevalence

Table S3: Socio-Economic Distribution of Patients Living with Myeloproliferative Neoplasms (MPNs) in the United States between the years 2000 – 2021

Table S4: Incidence Rates stratified by Gender and Age for Patients Living with Myeloproliferative Neoplasms (MPNs) in the United States between years 2000 – 2021

Table S5: Prevalence of Patients Living with MPNs by MPN subtype and age group in the United States between 1975-2021 Utilizing the SEER 8 Database

Table S6: Number of cases (n) of Myeloproliferative Neoplasms diagnosed in SEER-17 according to method of diagnosis and calendar period, 2000-2021

Figure S1: Racial Distribution of Patients Living with Myeloproliferative Neoplasms in United States between 2000-2021

Figure S2: Incidence Rate Ratio (Female: Male) for Patients Living with Myeloproliferative Neoplasms in the United States between 2000-2021

Figure S3: 5-year prevalence trends for Patients Living with Myeloproliferative Neoplasms in United States between years 2000-2021

Figure S4: Population pyramids depicting estimated prevalence on Jan 1, 2021, using SEER 8 registries

Figure S5: Population Pyramids depicting age and gender distribution along with Prevalence of Myeloid Neoplasms utilizing SEER 17 Database in the United States, with patients alive on Jan 1, 2021

Figure S6: Overall survival of Patients with Living with Myeloproliferative Neoplasms in the United States between 2000-2021 stratified by Age

Figure S7: Overall survival of Patients with Living with Myeloproliferative Neoplasms in the United States between 2000-2021 stratified by Race/Ethnicity

Figure S8: Overall survival of Patients with Living with Myeloproliferative Neoplasms in the United States between 2000-2021 stratified by Sex and Race/Ethnicity

Figure S9: Age adjusted Overall Survival curves for patients living with Myeloproliferative Neoplasms in the United States between 2000-2021

Figure S10: Overall Survival curves for patients living with Myeloproliferative Neoplasms in the United States between 2000-2021 stratified by Year of Diagnosis

Figure S11: Distribution of MPNs by Method of Diagnosis

SEER 17 includes registries in eight states (Connecticut, Hawaii, Iowa, Kentucky, Louisiana, New Jersey, New Mexico, and Utah), six metropolitan areas (Atlanta, Georgia, Los Angeles, San Francisco-Oakland, San Jose-Monterey, Seattle-Puget Sound) and the areas of Greater California, Rural Georgia, Greater Georgia; and finally, the Alaska Native Tumor Registry

Figures and Tables:

Table S1: ICD-O-3 codes used to identify AML and MDS patients

AML	MDS
9840	9975
9861	9980
9865	9982
9866	9983
9867	9985
9869	9986
9871	9987
9872	9989
9873	9992
9874	
9877	
9878	
9891	
9895	
9896	
9897	
9898	
9910	
9920	

Table S2: Conversion Factor Formula for Calculation of Total Estimated US Prevalence

Conversion factor	CFE_Total	Total US population aged ≥ 20 / Total SEER population of aged ≥ 20
	CFE_Males	Total US male population of males aged ≥ 20 / Total SEER population of males

formula		aged ≥ 20
	CFE_Females	Total US male population of females aged ≥ 20 / Total SEER population of females aged ≥ 20

We multiplied the CFE for corresponding sex, by each age-category prevalence counts in SEER 8 dataset, to estimate the population pyramid counts on Jan 1, 2021, and July 1, 2024.

Table S3: Socio-Economic Distribution of Patients Living with Myeloproliferative Neoplasms (MPNs) in the United States between the years 2000 – 2021

Variable	ET	PV	PMF	CML	overall
Median household income					
< \$50,000	1461 (6%)	1722(7.3%)	339 (5.54%)	758 (7.8%)	4280 (6.7%)
\$50,000-75,000	8889 (39%)	8990 (41.3%)	2353 (40.6%)	3836(44%)	24068 (38%)
\$75,000-100,000	9309(41%)	8525(39.2%)	2345(40.4%)	3534(40.5%)	23713(37.5%)
> \$100k	4484(18.5%)	4197 (17.8%)	1092(17.8%)	1351(14.2%)	11124(17.5%)
not available	29 (0.11%)	22 (0.09%)	2 (0.03%)	4(0.04%)	57(0.08%)
Sum	22711 (100%)	21734 (100%)	5792(100%)	8725 (100%)	63242 (100%)
Geographic county area, population size					
Metropolitan >1mill	14453 (64.5%)	13137(61%)	3548(63%)	5130(59.5%)	36268(62.5%)
Metropolitan 250k – 1mill	4737(21.2%)	4594(21.3%)	1284(22.8%)	2137(24.7%)	12752(22%)
Metropolitan <250k	1899(8.5%)	2005(9.3%)	503(8.9%)	844(9.6%)	5251(8.9%)
Nonmetropolitan adjacent to a metropolitan area	1846 (8.2%)	2104 (9.8%)	465 (8.2%)	769 (8.8%)	5184(8.8%)
Nonmetropolitan, not adjacent to a metropolitan area	1182 (5.3%)	1583 (7.4%)	325 (5.8%)	589 (6.8%)	3679 (6.3%)
Unknown	55 (0.24%)	34 (0.15%)	6 (0.1%)	14 (0.15%)	109 (0.18%)

Sum	22397 (100%)	21533 (100%)	5633 (100%)	8797 (100%)	58360 (100%)
-----	-----------------	-----------------	-------------	-------------	--------------

Table S4: Incidence Rates (per 100,000 person-years) stratified by sex and age for patients diagnosed with myeloproliferative neoplasms (MPNs) in the United States between years 2000 – 2021.

	Age (years)	ET		PV		PMF		CML	
		Count	Rate	Count	Rate	Count	Rate	Count	Rate
Overall	20-59	8284	0.76	8291	0.74	1342	0.12	5277	0.50
	≥60	15888	4.67	15165	4.56	4789	1.44	4206	1.30
Male	20-59	3178	0.58	5502	0.99	758	0.13	3045	0.58
	≥60	6023	4.06	7836	5.40	2929	2.00	2322	1.60
Female	20-59	5106	0.95	2789	0.49	584	0.10	2232	0.42
	≥60	9865	5.20	7329	3.83	1860	1.01	1884	1.06

Table S5: Prevalence estimates of patients by MPN subtype and age group in the United States between 1975-2021 Utilizing the SEER 8 Database. Abbreviations: ET: Essential Thrombocythemia, PV: Polycythemia Vera, PMF: Primary Myelofibrosis, CML: Chronic Myeloid Leukemia, MPN: Myeloproliferative Neoplasms, yrs: years). Prevalence percentage defined as (Patients with MPN alive at Jan 1, 2021/total population) x 100

	%	Number per 100,000	Estimated prevalence count	Estimated whole US Prevalence Count (2021)	Estimated whole US prevalence Count (2024)
PV					
Overall	0.0212%	21	4392	52,955	54,682
20-39 years	0.0021%	2	164	1,973	2,037
40-59 years	0.0131%	13	913	11,011	11,370
60+ years	0.553%	55	3,315	39,973	41,276

20-29 years	0.0010%	1	39	470	486
30-39 years	0.0031%	3	125	1,502	1,551
40-49 years	0.0080%	8	281	3,383	3,494
50-59 years	0.0183%	18	633	7,626	7,875
60-69 years	0.0384%	38	1,186	14,305	14,771
70-79 years	0.0657%	66	1,255	15,132	15,626
80+ years	0.0874%	87	874	10,535	10,878
ET					
Overall	0.0250%	25	5,177	62,420	64,456
20-39 years	0.0046%	5	354	4,267	4,406
40-59 years	0.0181%	18	1,256	15,144	15,638
60+ years	0.0595%	59	3,567	43,009	44,412
20-29 years	0.0024%	2	90	1,082	1,117
30-39 years	0.0066%	7	264	3,186	3,289
40-49 years	0.0135%	14	473	5,703	5,889
50-59 years	0.0227%	23	783	9,441	9,749
60-69 years	0.0377%	38	1,164	14,030	14,488
70-79 years	0.0707%	71	1,350	16,278	16,808

80+ years	0.1054%	105	1,053	12,700	13,114
PMF					
Overall	0.0034%	3	698	8,421	8,696
20-39 years	0.0002%	0/2	12	145	149
40-59 years	0.0019%	2	134	1,621	1,673
60+ years	0.0092%	9	552	6,656	6,873
20-29 years	0.0000%	0.0	1	12	12
30-39 years	0.0003%	0.3	11	133	137
40-49 years	0.0008%	1	29	347	359
50-59 years	0.0031%	3	106	1,273	1,315
60-69 years	0.0060%	6	186	2,245	2,318
70-79 years	0.0133%	13	255	3,072	3,172
80+ years	0.0111%	11	111	1,338	1,382
CML					
Overall	0.0115%	12	2,390	28822	29,762
20-39 years	0.0048%	5	372	4,487	4,633
40-59 years	0.0121%	12	844	10,175	10,507
60+ years	0.0196%	20	1,175	14,161	14,623
20-29 years	0.0032%	3	120	1,446	1,493
30-39 years	0.0063%	6	252	3,041	3,140
40-49 years	0.0101%	10	352	4,242	4,380
50-59 years	0.0143%	14	492	5,933	6,127

60-69 years	0.0176%	18	544	6,562	6,776
70-79 years	0.0226%	23	433	5,216	5,386
80+ years	0.0198%	20	198	2,384	2,461

	%	Number per 100,000	Estimated prevalence count	Estimated whole US Prevalence Count (2021)	Estimated whole US prevalence Count (2024)
PV					
Overall	0.0212%	21	4392	52,955	54,682
20-39 years	0.0021%	2	164	1,973	2,037
40-59 years	0.0131%	13	913	11,011	11,370
60+ years	0.553%	55	3,315	39,973	41,276
20-29	0.0010%	1	39	470	486
30-39	0.0031%	3	125	1,502	1,551
40-49	0.0080%	8	281	3,383	3,494
50-59	0.0183%	18	633	7,626	7,875
60-69	0.0384%	38	1,186	14,305	14,771

70-79	0.0657%	66	1,255	15,132	15,626
80+	0.0874%	87	874	10,535	10,878
ET					
Overall	0.0250%	25	5,177	62,420	64,456
20-39 years	0.0046%	5	354	4,267	4,406
40-59 years	0.0181%	18	1,256	15,144	15,638
60+ years	0.0595%	59	3,567	43,009	44,412
20-29	0.0024%	2	90	1,082	1,117
30-39	0.0066%	7	264	3,186	3,289
40-49	0.0135%	14	473	5,703	5,889
50-59	0.0227%	23	783	9,441	9,749
60-69	0.0377%	38	1,164	14,030	14,488
70-79	0.0707%	71	1,350	16,278	16,808
80+	0.1054%	105	1,053	12,700	13,114
PMF					
Overall	0.0034%	3	698	8,421	8,696
20-39 years	0.0002%	0/2	12	145	149
40-59 years	0.0019%	2	134	1,621	1,673
60+ years	0.0092%	9	552	6,656	6,873
20-29	0.0000%	0.0	1	12	12
30-39	0.0003%	0.3	11	133	137

40-49	0.0008%	1	29	347	359
50-59	0.0031%	3	106	1,273	1,315
60-69	0.0060%	6	186	2,245	2,318
70-79	0.0133%	13	255	3,072	3,172
80+	0.0111%	11	111	1,338	1,382
CML					
Overall	0.0115%	12	2,390	28822	29,762
20-39 years	0.0048%	5	372	4,487	4,633
40-59 years	0.0121%	12	844	10,175	10,507
60+ years	0.0196%	20	1,175	14,161	14,623
20-29	0.0032%	3	120	1,446	1,493
30-39	0.0063%	6	252	3,041	3,140
40-49	0.0101%	10	352	4,242	4,380
50-59	0.0143%	14	492	5,933	6,127
60-69	0.0176%	18	544	6,562	6,776
70-79	0.0226%	23	433	5,216	5,386
80+	0.0198%	20	198	2,384	2,461

Table S6: Number of cases (n) of Myeloproliferative Neoplasms diagnosed in SEER-17 according to method of diagnosis and calendar period, 2000-2021*

	PV	ET	PMF	CML
Clinical				

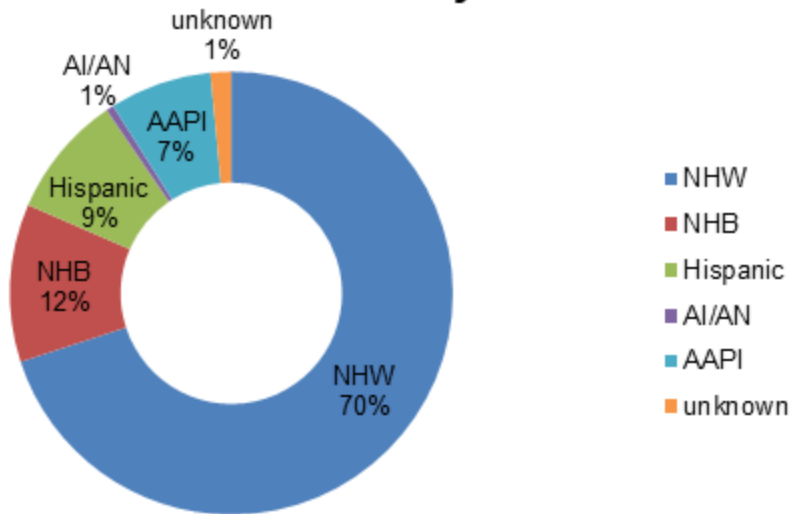
2001-2005	479	263	13	1
2006-2010	653	695	29	11
2011-2015	1134	1162	56	25
2016-2021	1126	1336	41	46
Lab testing				
2001-2005	847	279	10	12
2006-2010	1078	821	20	39
2011-2015	1370	1067	24	96
2016-2021	1611	1819	20	149
Microscopic				
2001-2005	2846	2631	966	783
2006-2010	2747	3259	1221	1270
2011-2015	2990	3686	1563	2861
2016-2021	4192	5916	2065	4094
Not Specified				
2001-2005	547	176	21	13
2006-2010	568	307	29	19
2011-2015	603	356	24	24
2016-2021	655	393	26	21

*Method of diagnosis categories include microscopically confirmed [Microscopic] (positive histology, positive cytology, positive histology and positive immunophenotyping and/or positive genetic studies, positive microscopic confirmation with method unspecified); [Lab test] laboratory test/marker study; [Clinical] clinical diagnosis only (direct visualization without microscopic confirmation, radiography without microscopic confirmation, clinical diagnosis only); and [Not specified] other method of diagnosis/unknown

Figure S1 - Racial distribution of patients living with myeloid neoplasms in the United States between years 2001-2021 (a) ET: Essential Thrombocythemia, (b) PV: Polycythemia Vera (c) PMF: Primary Myelofibrosis, and (d) CML: Chronic Myeloid Leukemia, BCR:ABL positive(CML: Chronic myeloid leukemia BCR:ABL positive, ET: essential thrombocythemia, PMF: primary myelofibrosis, PV: polycythemia vera, NHW: Non-Hispanic White, NHB: Non Hispanic Black, AI/AN: American Indian/ Alaska Native, AAPI: Asian And Pacific Islanders)

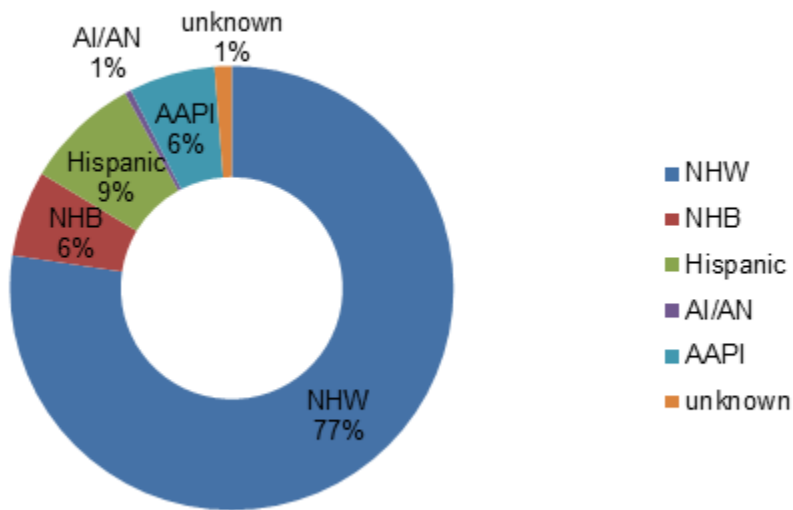
1a

Essential Thrombocythemia

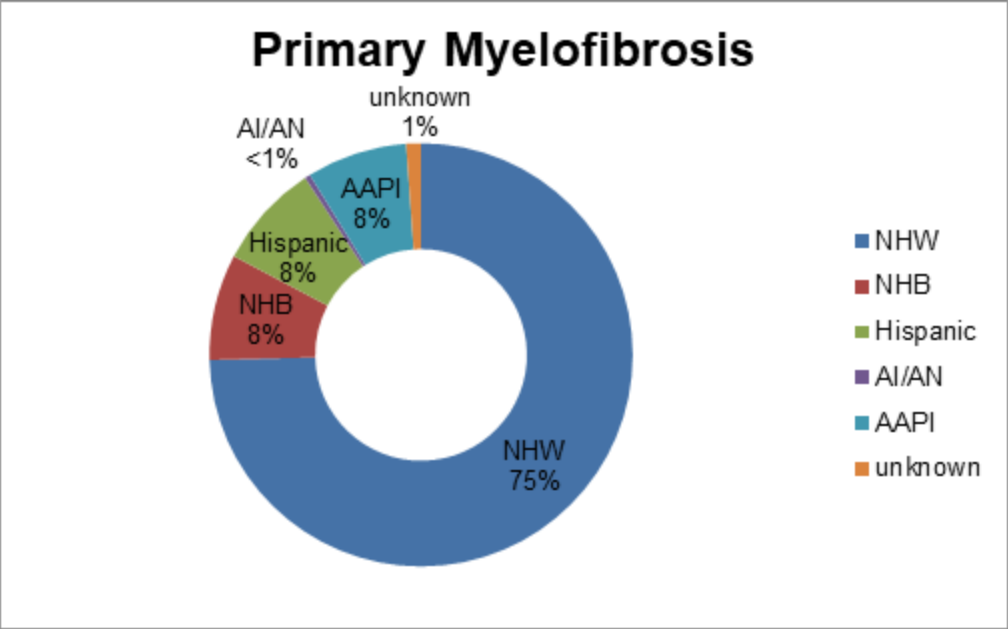


1b

Polycythemia Vera



1c



1d

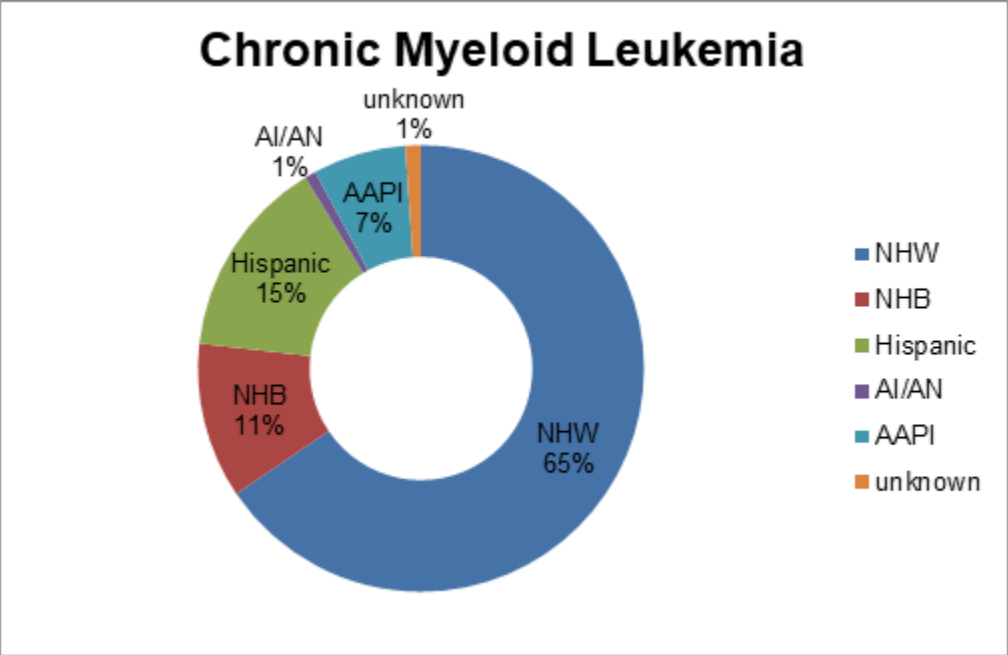


Figure S2: Incidence Rate Ratio (female:male) trend for patients with myeloproliferative neoplasms across different age groups

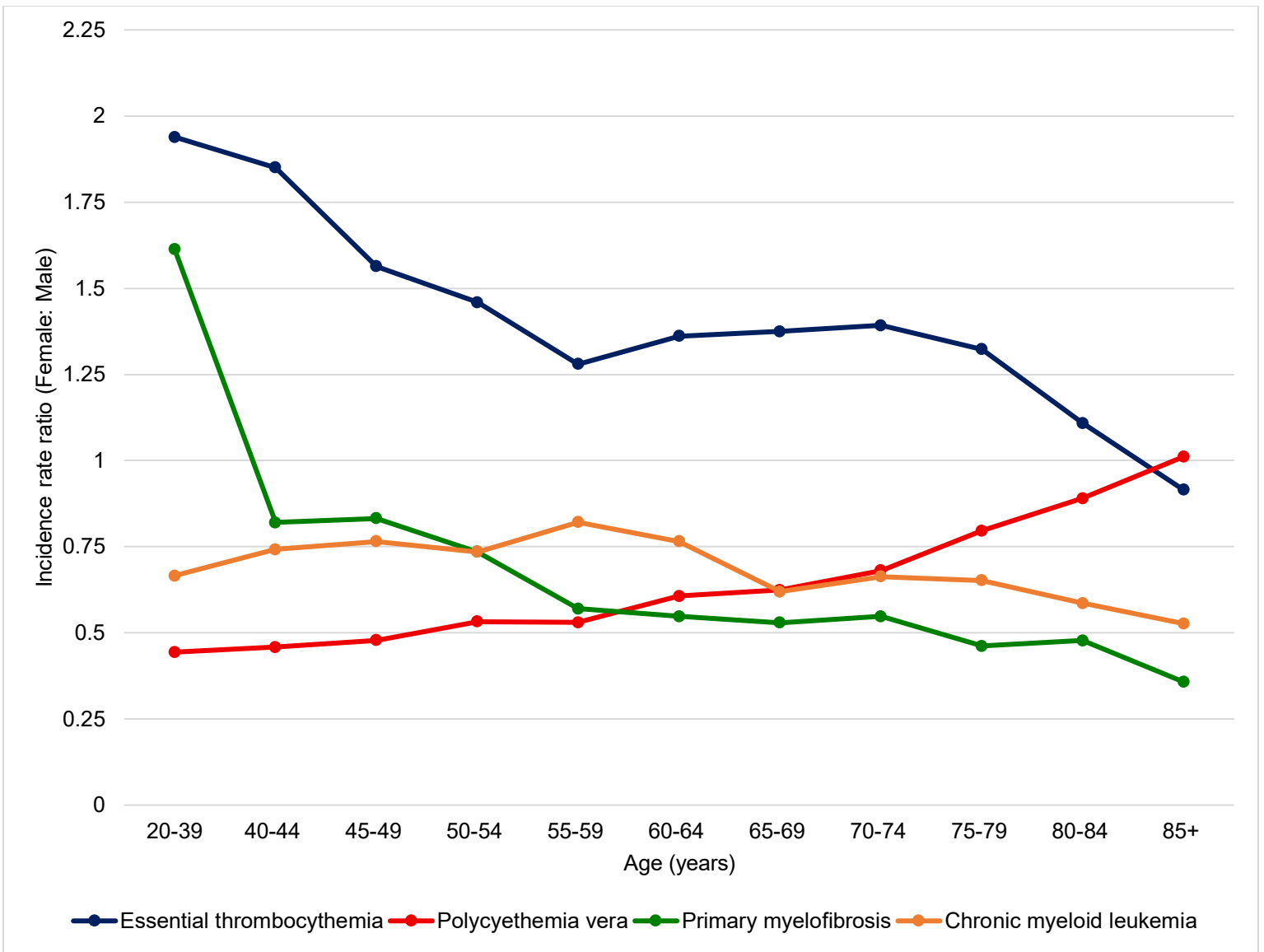


Figure S3: 5-year counts trends of Patients Living with Myeloproliferative Neoplasms in United States between years 2000-2021

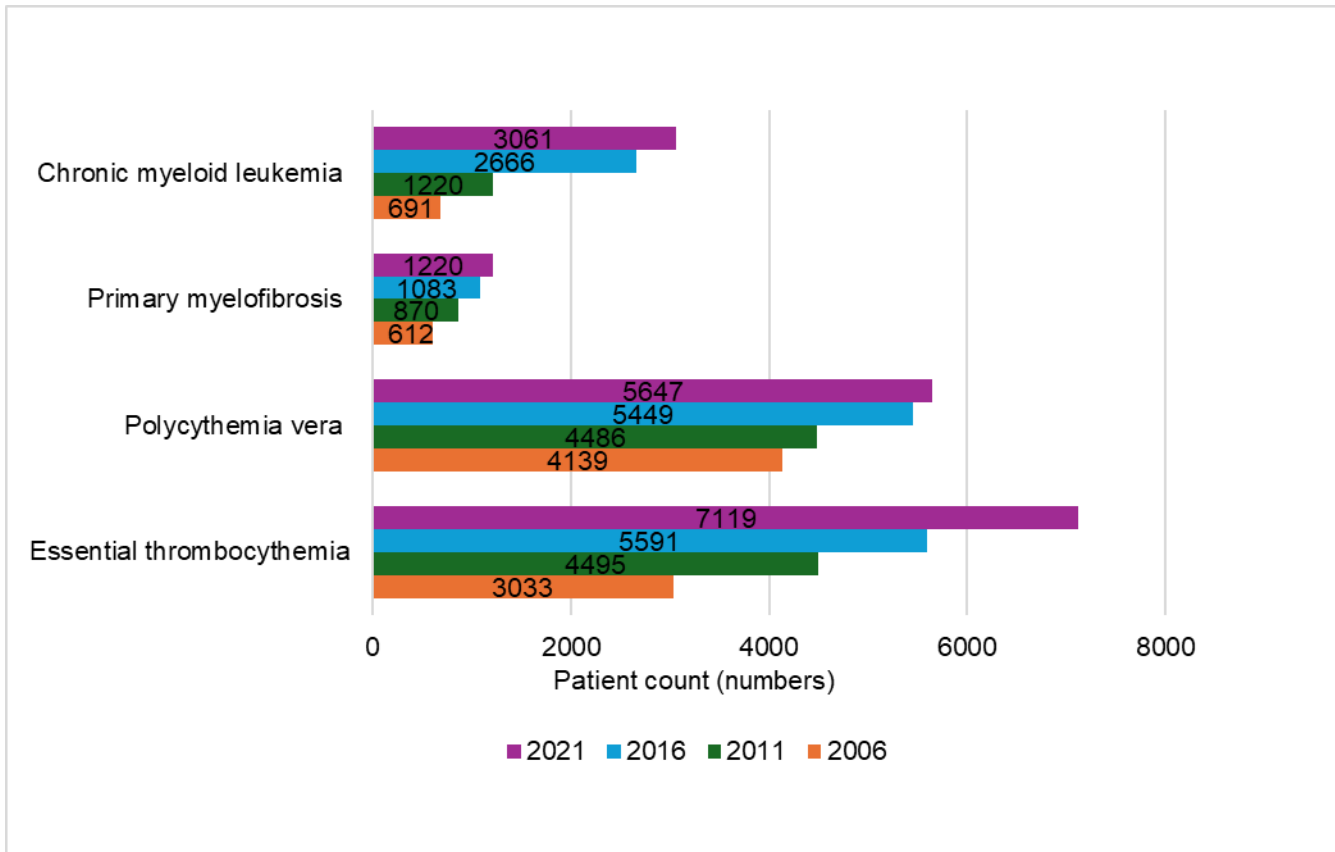
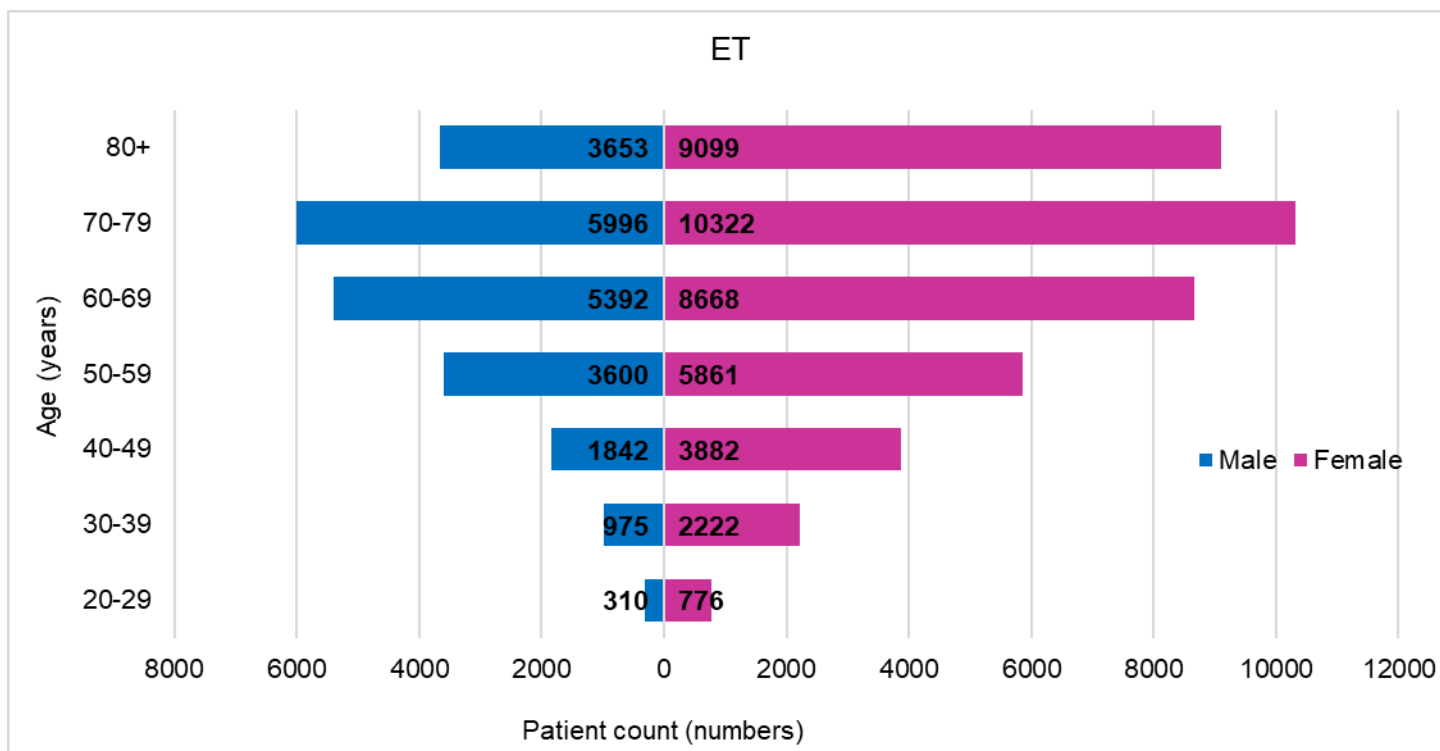
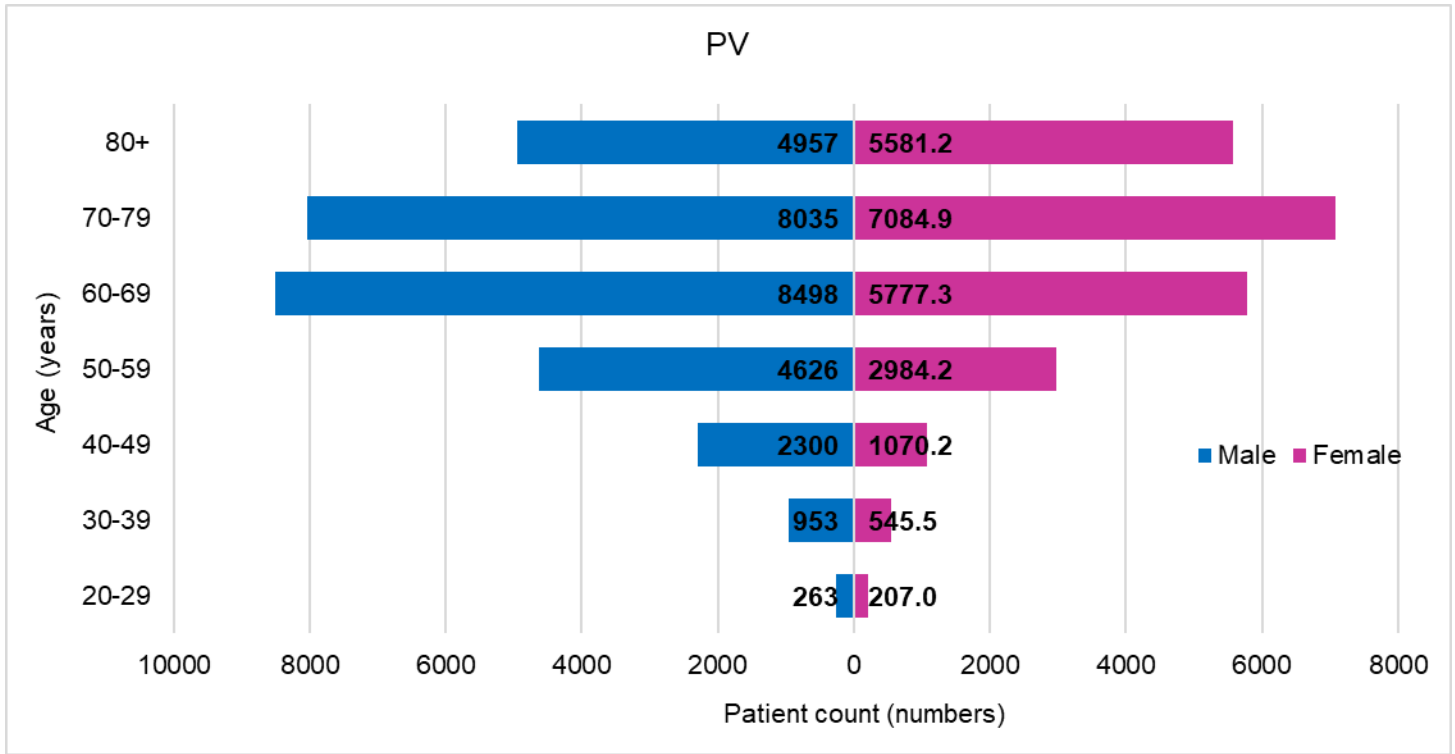


Figure S4: Population pyramids depicting estimated prevalence on Jan 1, 2021 using SEER 8 registries. (a) ET: essential thrombocythemia, (b) PV: polycythemia vera (c) PMF: primary myelofibrosis, and (d) CML: chronic myeloid leukemia

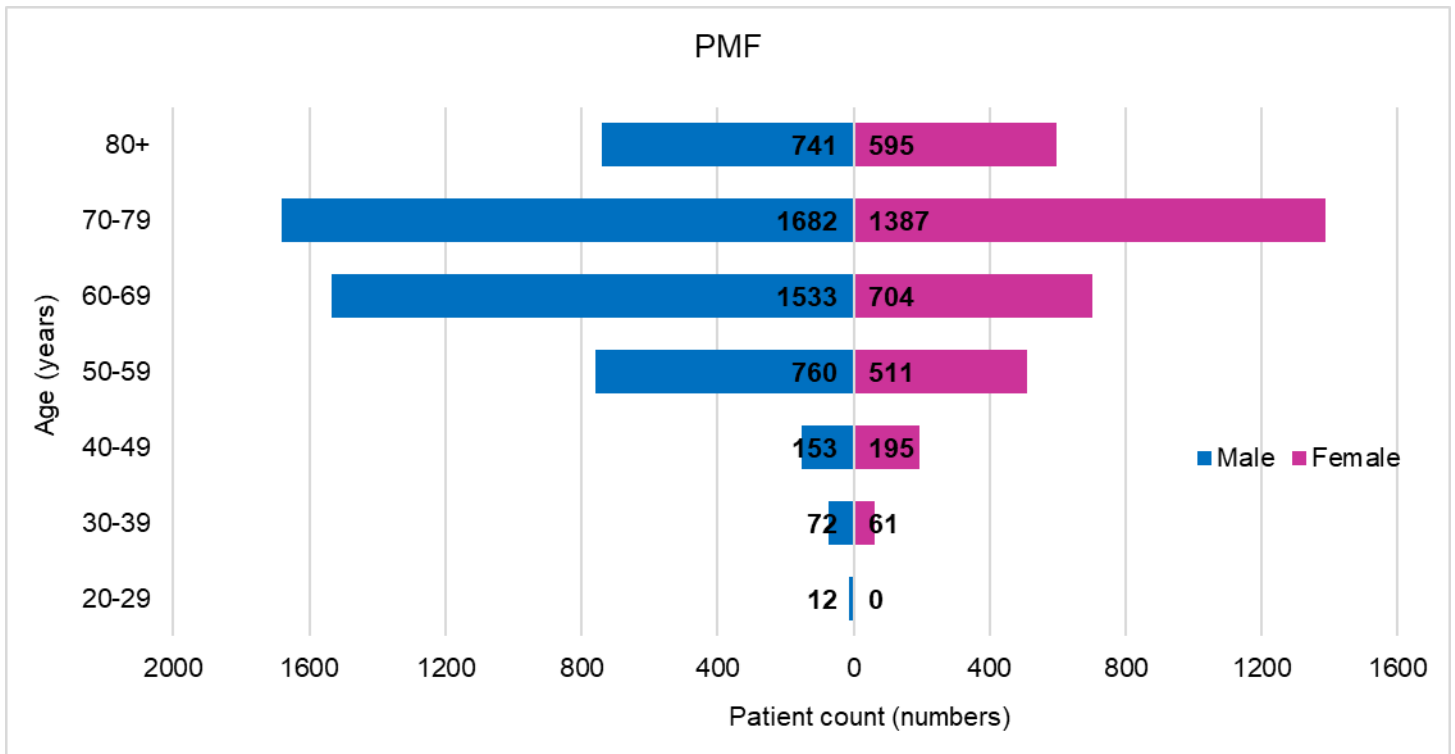
4a



4b



4c



4d

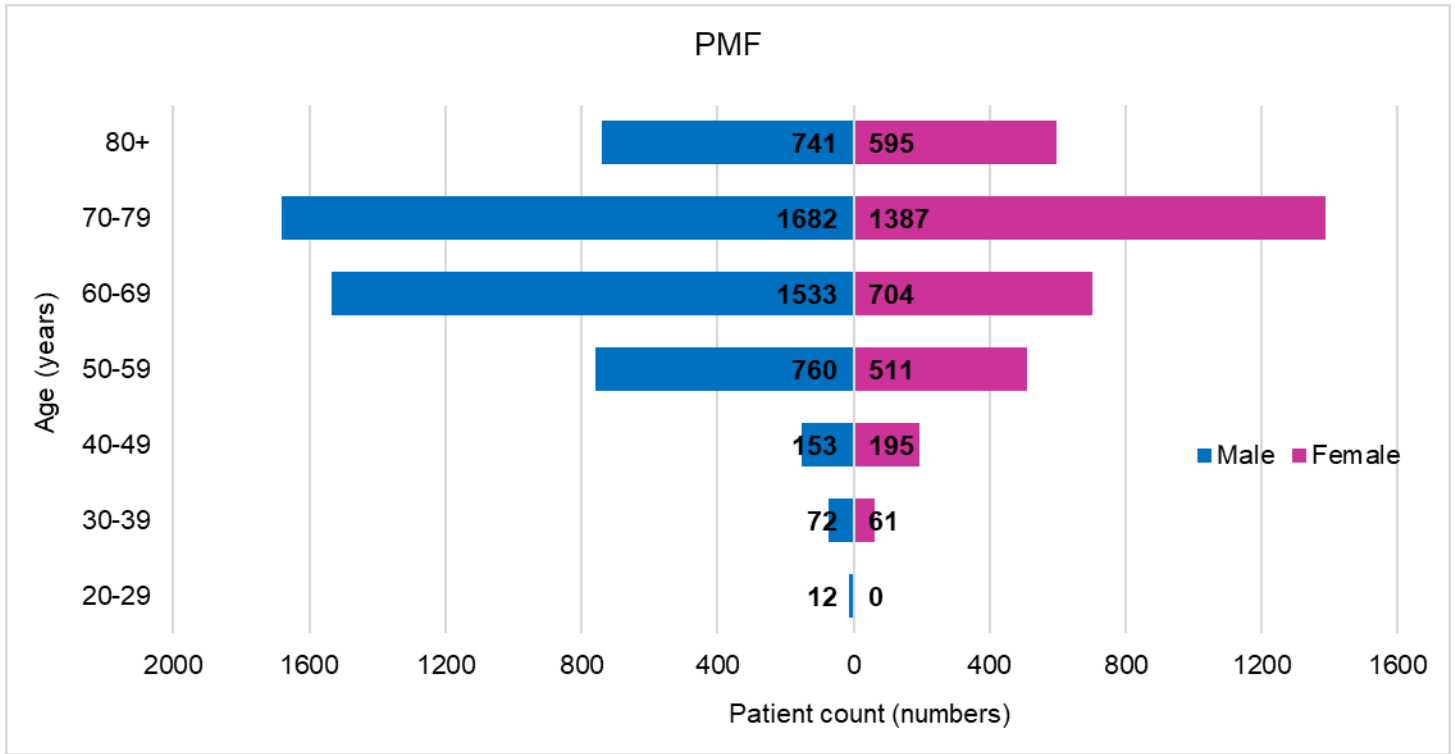
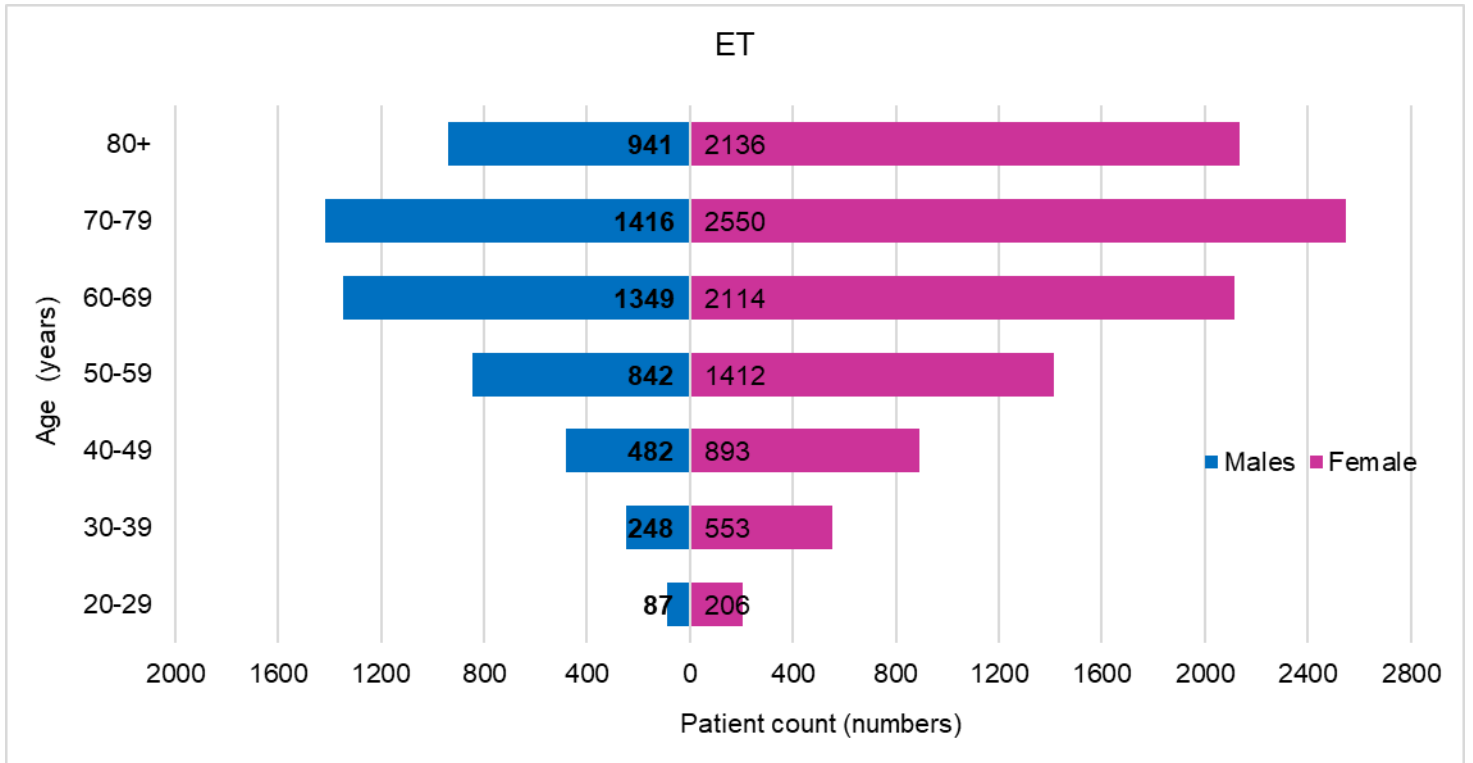
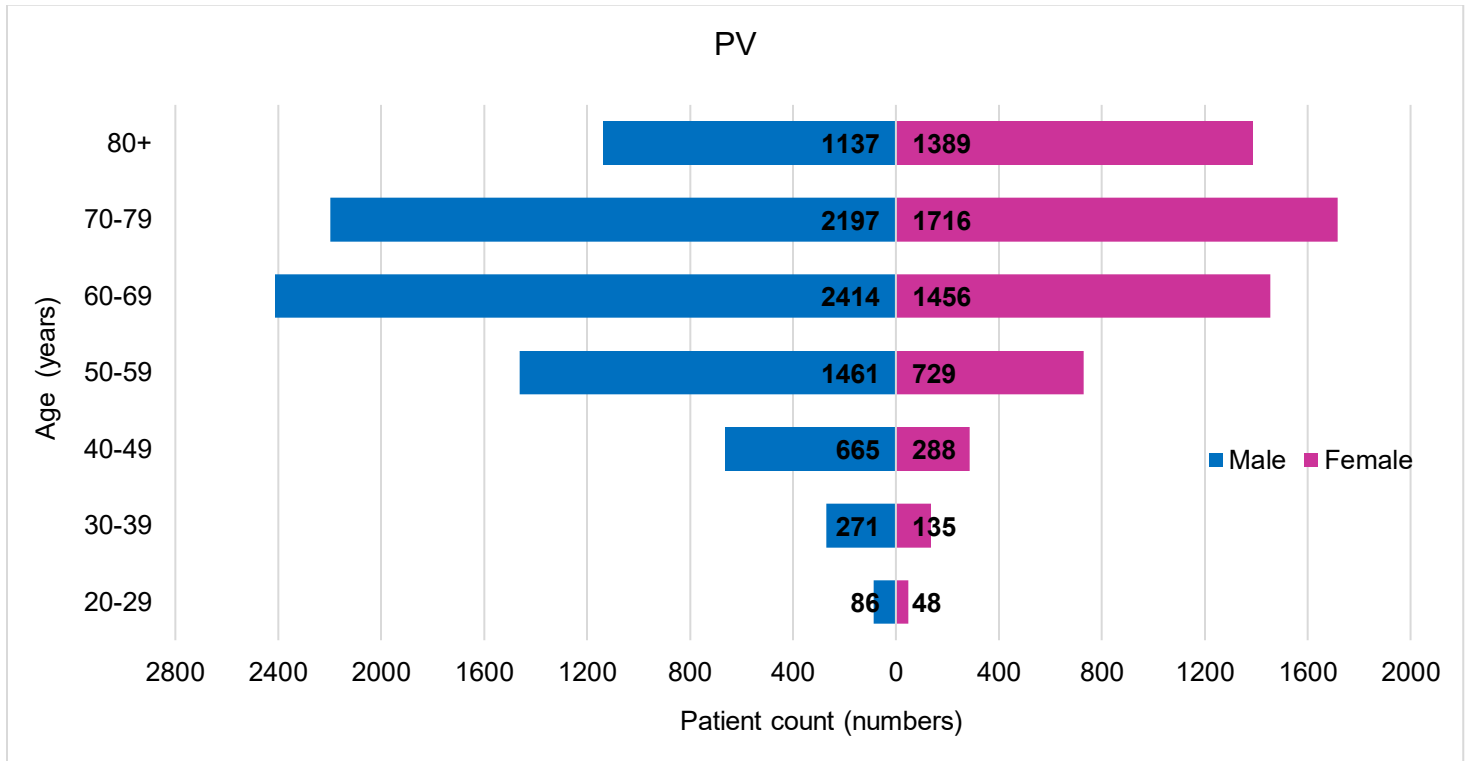


Figure S5: Population Pyramids depicting prevalence on Jan 1, 2021 using SEER 17 registries. These prevalence numbers do not estimate the prevalence for the total US population. (a) ET: essential thrombocythemia, (b) PV: polycythemia vera (c) PMF: primary myelofibrosis, and (d) CML: chronic myeloid leukemia

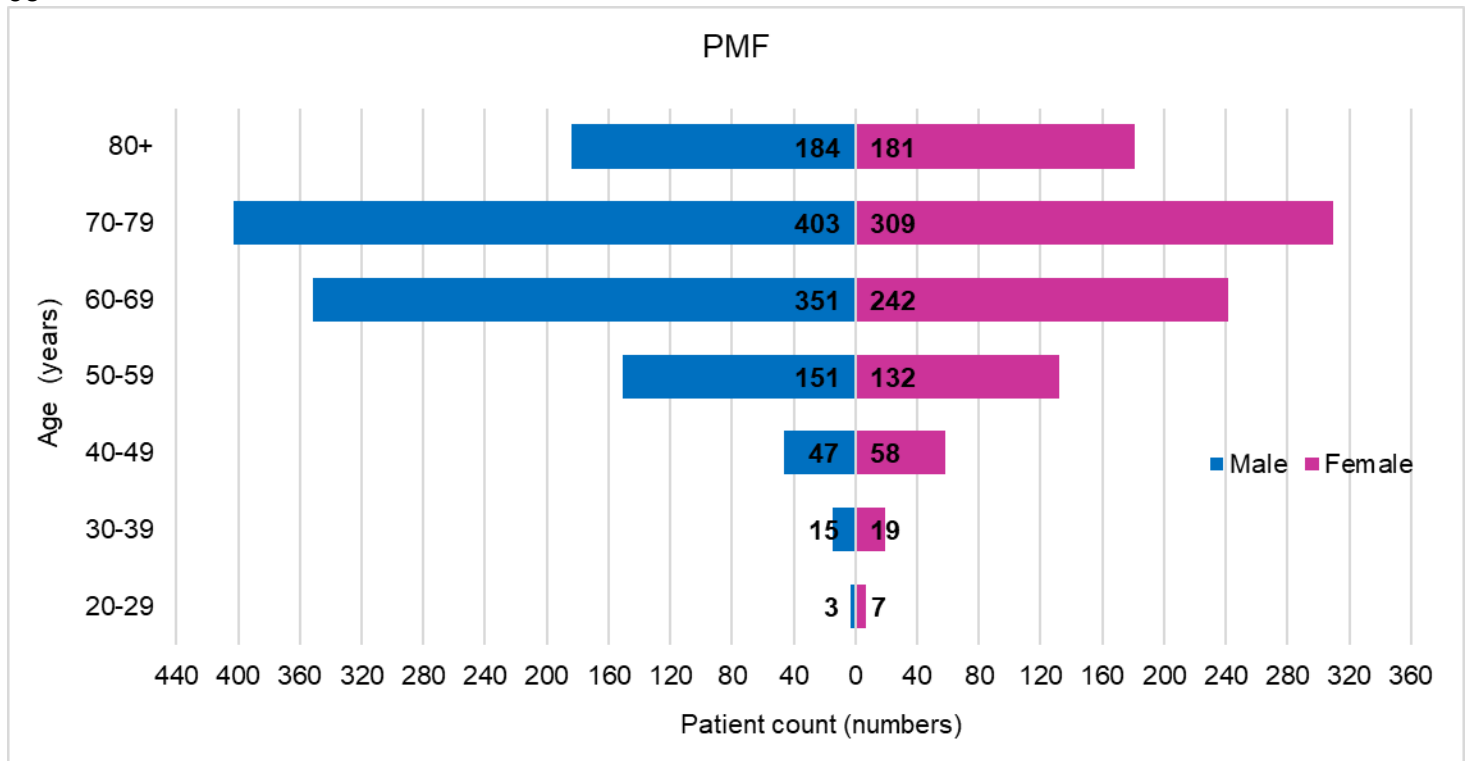
5a



5b



5c



5d

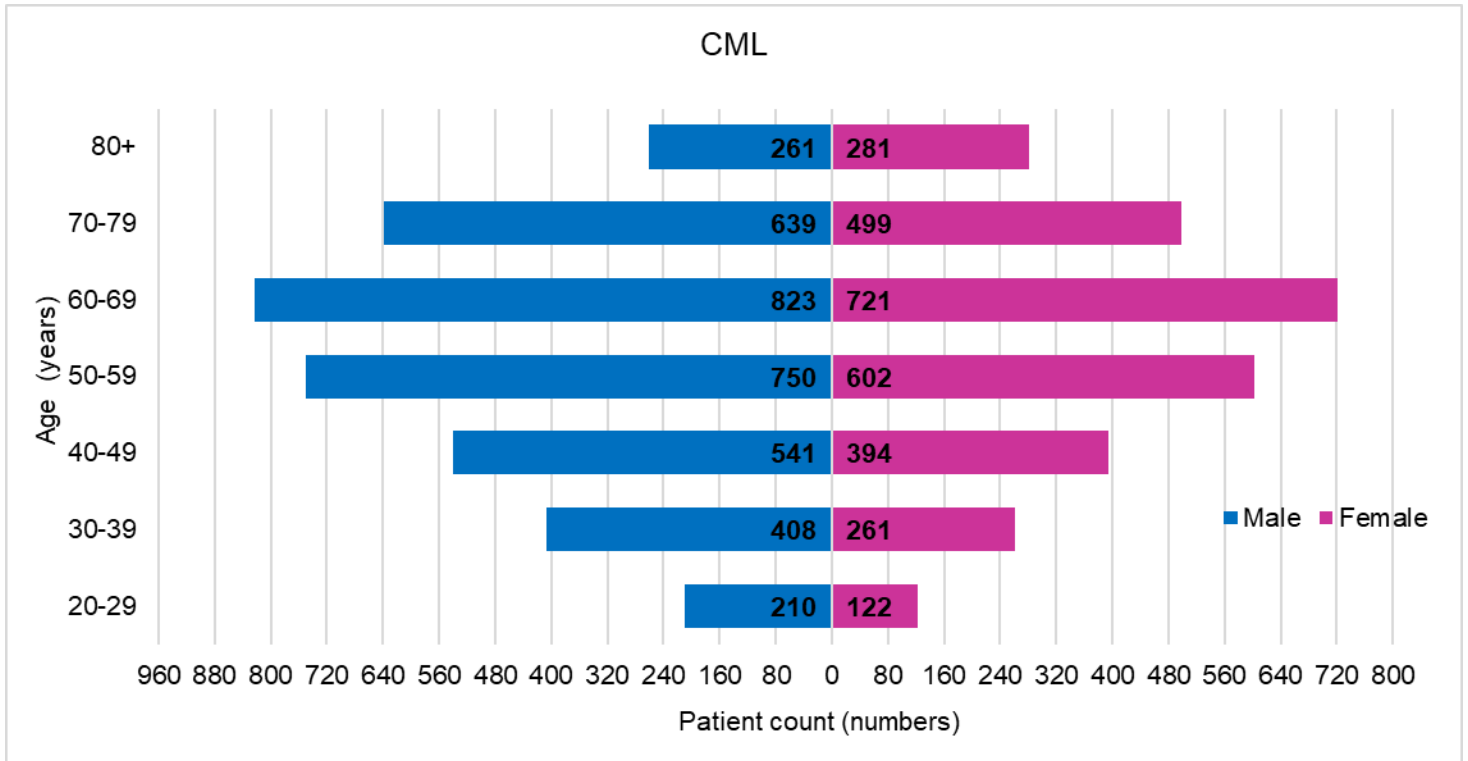
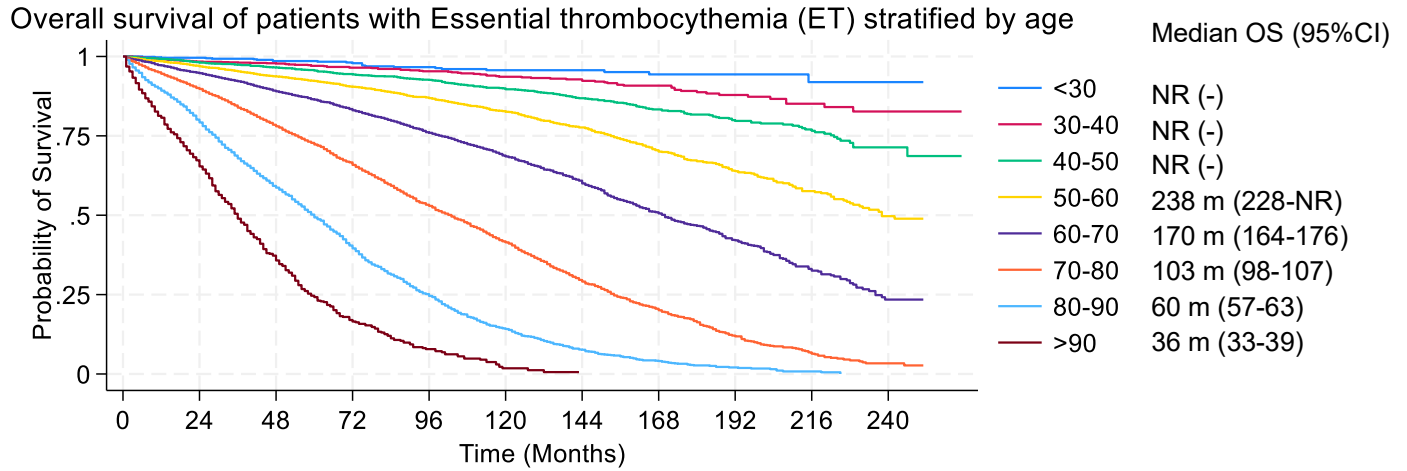


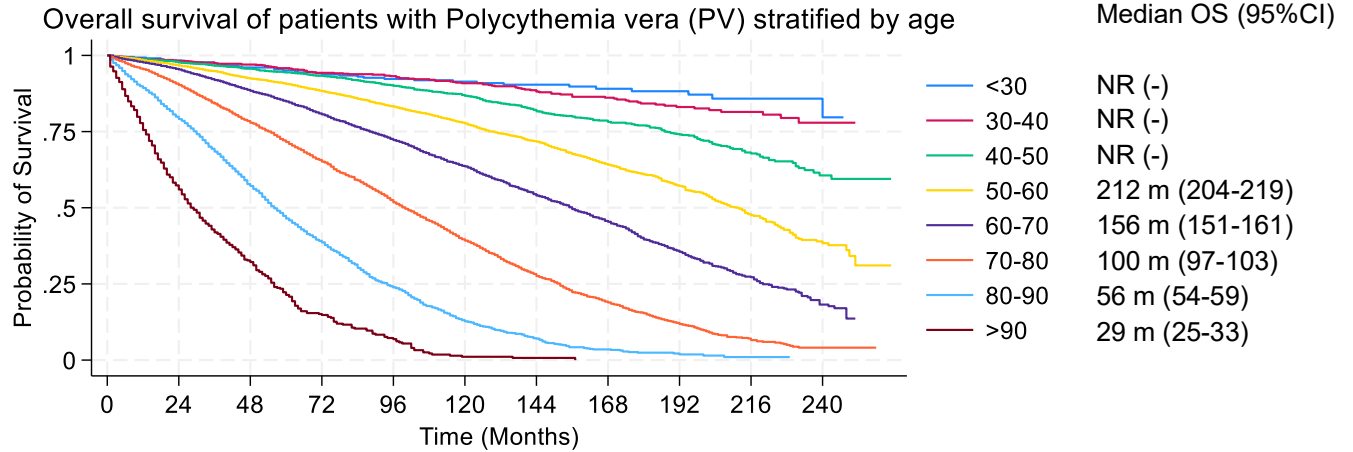
Figure S6: Overall survival of Patients with Living with Myeloproliferative Neoplasms in the United States between 2000-2021 stratified by Age. (a) ET: essential thrombocythemia, (b) PV: polycythemia vera (c) PMF: primary myelofibrosis, and (d) CML: chronic myeloid leukemia

6



Number at risk	0	24	48	72	96	120	144	168	192	216	240
<30	781	652	522	413	332	250	187	126	76	36	14
30-40	1510	1232	1004	785	609	496	401	292	167	89	36
40-50	2546	2172	1802	1458	1167	937	733	496	336	180	56
50-60	3714	3158	2566	2074	1597	1261	930	623	373	185	67
60-70	5573	4535	3580	2723	1949	1379	916	559	310	122	27
70-80	5543	4293	3144	2175	1390	885	500	260	101	33	7
80-90	3268	2324	1488	853	430	197	83	41	12	3	0
>90	721	420	195	70	24	4	0	0	0	0	0

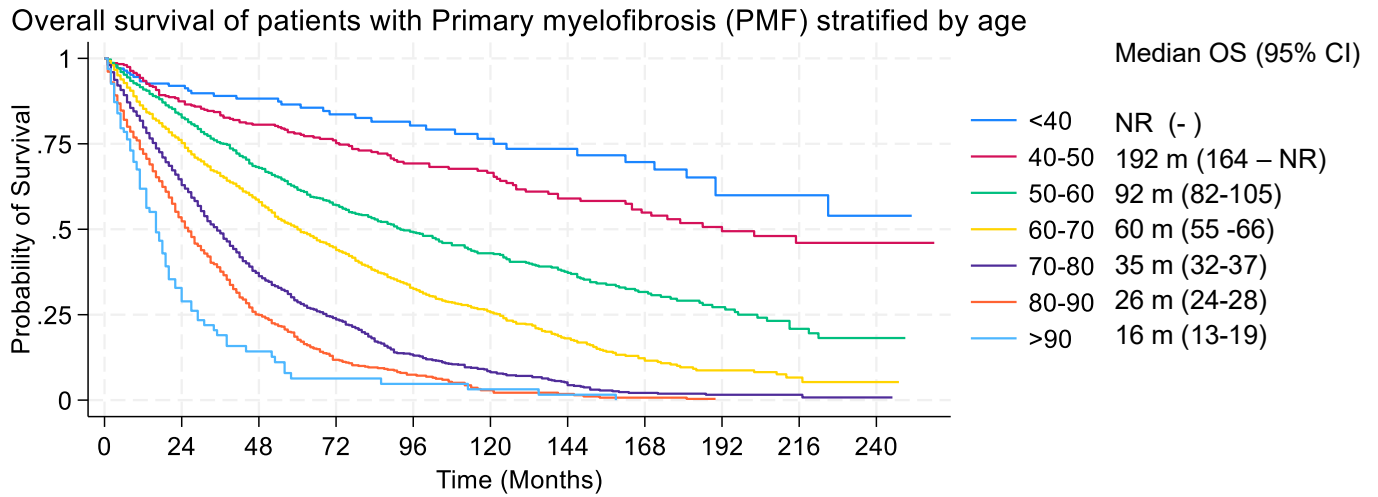
6b



Number at risk

	0	24	48	72	96	120	144	168	192	216	240
<30	434	372	320	275	232	194	157	119	85	41	14
30-40	1033	901	770	649	562	469	391	292	193	102	29
40-50	2603	2310	2002	1730	1430	1157	886	674	446	212	63
50-60	4603	4022	3410	2845	2250	1666	1227	829	519	252	67
60-70	5880	4954	3951	3046	2216	1552	1052	660	358	153	35
70-80	5116	4091	3042	2162	1425	865	497	262	123	39	7
80-90	2573	1839	1142	676	338	140	57	22	7	1	0
>90	517	255	122	48	20	3	1	0	0	0	0

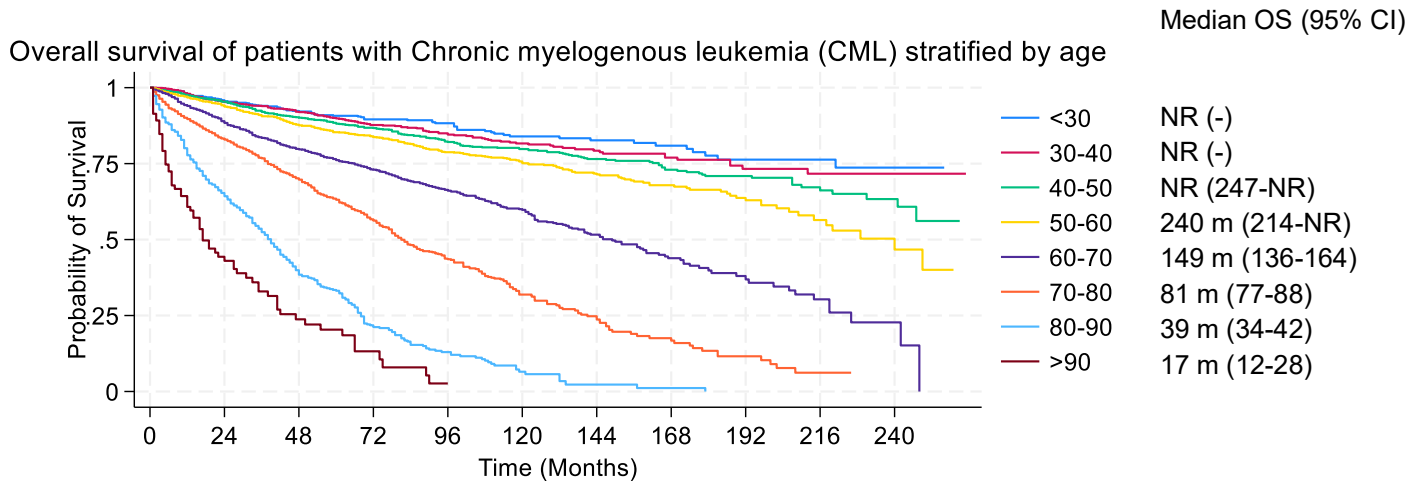
6c



Number at risk

	0	24	48	72	96	120	144	168	192	216	240
<40	169	130	107	84	71	53	42	33	23	12	7
40-50	359	287	231	183	139	112	84	61	41	23	4
50-60	912	692	475	344	246	173	119	67	40	16	7
60-70	1736	1159	761	462	279	158	76	34	18	5	1
70-80	1804	1013	500	272	113	50	25	9	4	2	1
80-90	872	403	158	60	26	8	5	2	0	0	0
>90	96	25	9	4	3	2	1	0	0	0	0

6d



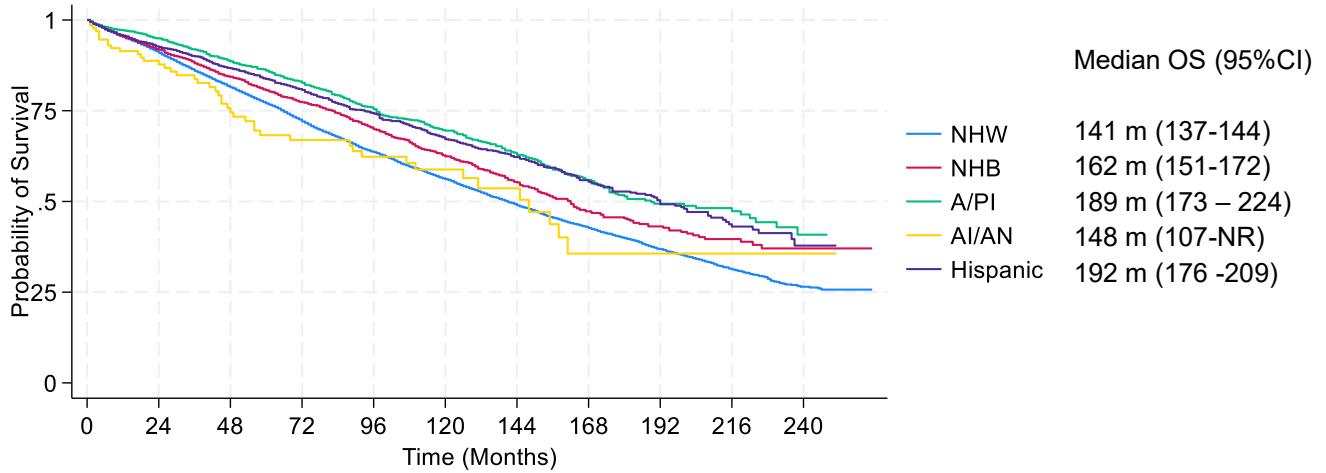
Number at risk

<30	739	590	475	369	249	170	117	83	53	32	12
30-40	1151	905	710	522	390	245	164	113	69	40	11
40-50	1591	1286	1033	797	584	418	266	190	126	66	26
50-60	1926	1524	1188	887	604	392	240	147	84	36	14
60-70	1899	1377	987	698	465	268	141	75	34	16	4
70-80	1326	894	610	391	206	101	46	22	12	4	0
80-90	554	305	161	73	30	9	2	1	0	0	0
>90	93	33	14	5	1	0	0	0	0	0	0

Figure S7 – Overall survival of Patients with Living with Myeloproliferative Neoplasms in the United States between 2000-2021 stratified by Race/Ethnicity. (a) Patients identifying Hispanic (median OS 192 months, 95% CI, 176-209 months) did significantly better than other races living with ET, whereas NHW (median OS 141 months, 95% CI 137-144 months) patients did relatively the worst of all groups with ET. (b) AI/ANs living with PV (median OS 195 months, 95% CI 111 months -NR) also did relatively better than their counterparts, and NHW (median OS 144 months, 95% CI 141-147 months) did relatively worse. (c) Hispanic patients living with PMF (median OS 42 months, 95% CI 38-48 months) did worse than their counterparts, whereas A/PI living with PMF (median OS 68 months, 95% CI 54-80 months) did relatively better than other racial groups. (d) Hispanic patients living with CML (median OS 210 months, 95% CI 175-NR) did relatively better than other racial groups, and NHB (median OS 164 months, 95% CI 145-194 months) did relatively worse.

7a

Overall survival of patients with Essential thrombocythemia (ET) stratified by Race/Ethnicity

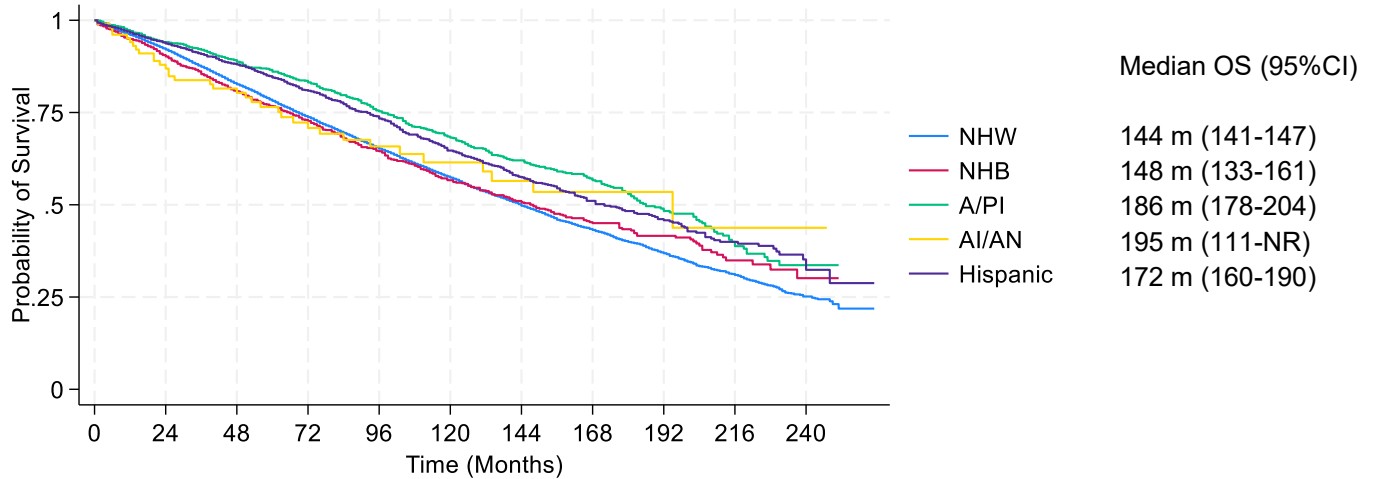


Number at risk

	0	24	48	72	96	120	144	168	192	216	240
NHW	16592	13225	10037	7338	5174	3752	2603	1692	983	455	145
NHB	2736	2156	1648	1189	850	602	372	215	121	58	21
A/PI	1758	1432	1120	863	623	439	311	195	108	56	18
AI/AN	131	90	63	47	40	27	17	8	5	3	1
Hispanic	2103	1623	1244	963	703	513	387	250	135	68	18

7b

Overall survival of patients with Polycythemia vera (PV) stratified by Race/Ethnicity

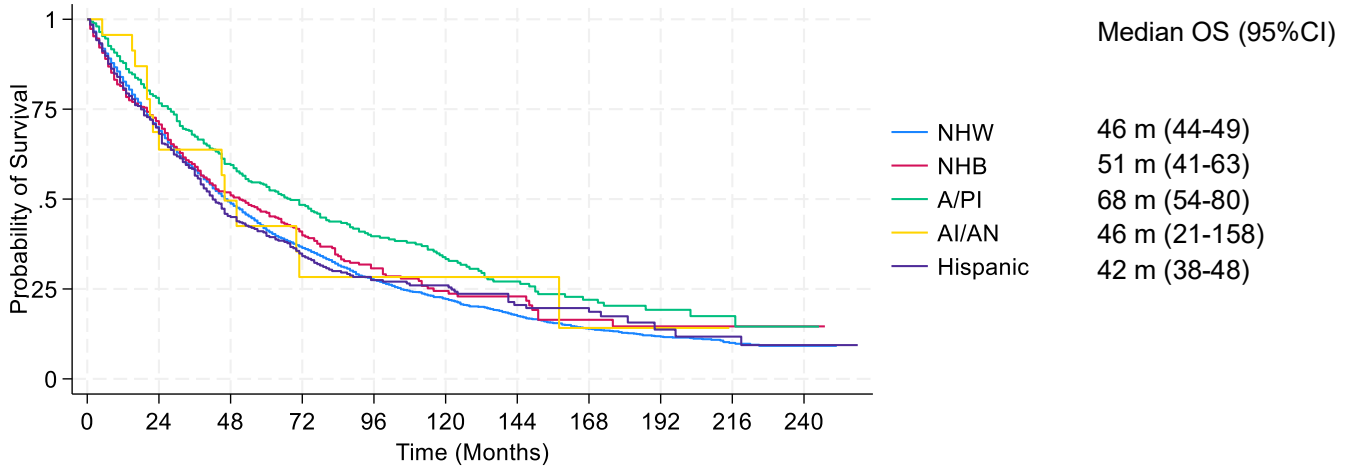


Number at risk

	0	24	48	72	96	120	144	168	192	216	240
NHW	17626	14608	11464	8837	6535	4659	3269	2181	1304	603	161
NHB	1435	1155	907	699	513	341	249	163	97	37	11
A/PI	1424	1188	953	777	597	450	324	232	145	68	15
AI/AN	105	85	69	48	35	25	20	13	11	6	2
Hispanic	1895	1506	1221	963	712	506	356	233	150	80	25

7c

Overall survival of patients with Primary myelofibrosis (PMF) stratified by Race/Ethnicity

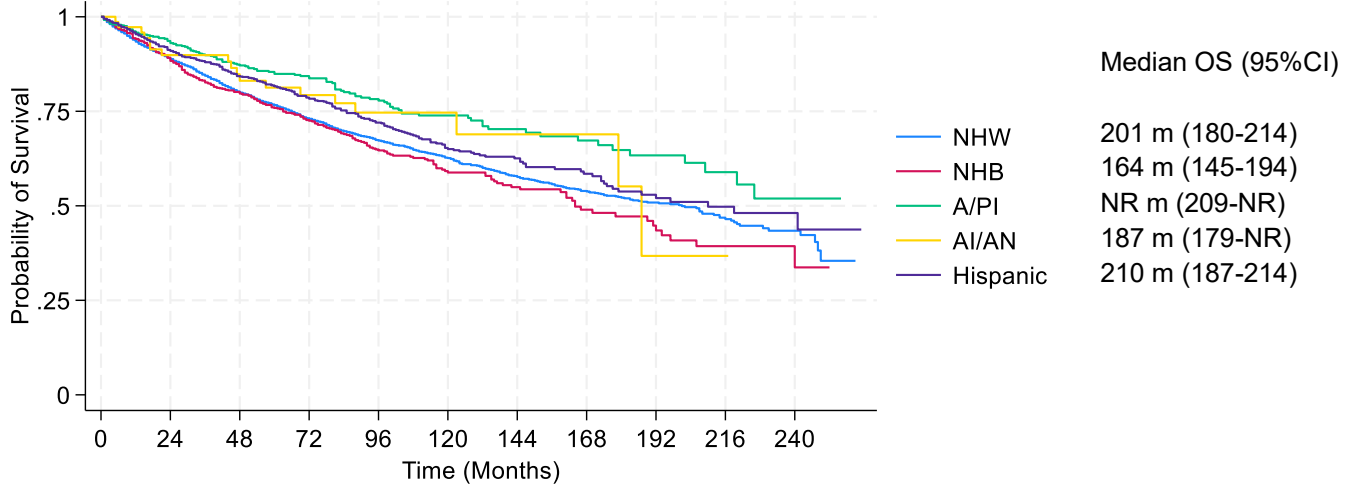


Number at risk

	0	24	48	72	96	120	144	168	192	216	240
NHW	4454	2764	1668	1043	649	405	260	147	94	43	13
NHB	486	305	181	111	58	32	20	10	7	3	2
A/PI	456	304	204	141	93	64	40	27	16	6	2
AI/AN	23	14	7	4	4	2	2	1	1	0	0
Hispanic	468	285	155	95	63	45	25	19	7	5	3

7d

Overall survival of patients with Chronic myelogenous leukemia (CML) stratified by Race/Ethnicity

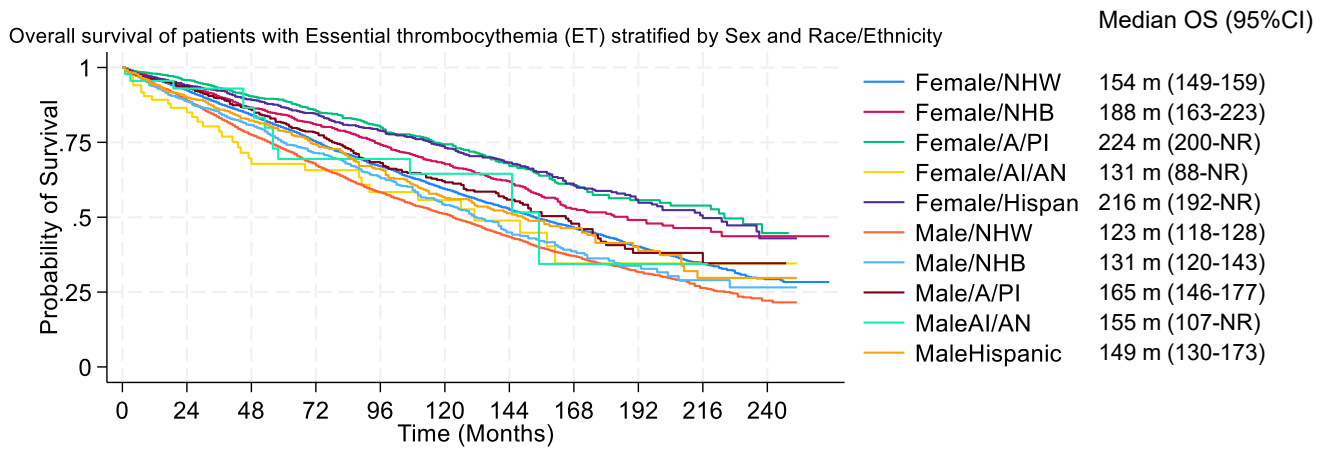


Number at risk

	0	24	48	72	96	120	144	168	192	216	240
NHW	6083	4563	3425	2443	1683	1073	635	410	239	122	41
NHB	1055	761	563	407	248	156	98	59	35	18	7
A/PI	623	491	370	282	195	119	78	56	38	20	7
AI/AN	75	58	50	40	27	14	9	5	2	1	0
Hispanic	1340	963	719	526	344	217	140	92	59	31	11

Figure S8: Overall survival of Patients with Living with Myeloproliferative Neoplasms in the United States between 2000-2021 stratified by Sex and Race/Ethnicity. (a) AAPI females with ET had the best OS in our cohort, whereas NHW males with ET had the worst median OS. (b) Hispanic males fared the best of all race-gender subgroups with PV, and NHW females had the most inferior survival of all groups. (c) Hispanic and NHW males along with NHB females had inferior median survival and AI/AN females did better compared to other race-gender groups living with PMF. (d) A/PI females did better and NHB males did worse than other race-gender groups with CML

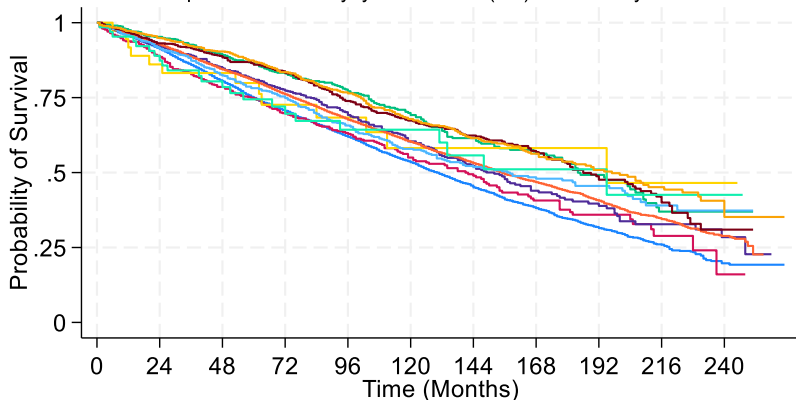
8a



Number at risk	0	24	48	72	96	120	144	168	192	216	240
Female/NHW	10224	8233	6351	4680	3334	2412	1683	1114	641	304	100
Female/NHB	1709	1374	1044	759	540	399	251	145	87	38	16
Female/A/PI	1099	899	708	549	406	289	209	141	81	45	13
Female/AI/AN	86	56	37	29	24	18	12	6	4	2	1
Female/Hispanic	1349	1056	809	646	483	361	280	186	105	56	16
Male/NHW	6368	4992	3686	2658	1840	1340	920	578	342	151	45
Male/NHB	1027	782	604	430	310	203	121	70	34	20	5
Male/A/PI	659	533	412	314	217	150	102	54	27	11	5
Male/AI/AN	45	34	26	18	16	9	5	2	1	1	0
Male/Hispanic	754	567	435	317	220	152	107	64	30	12	2

8b

Overall survival of patients with Polycythemia vera (PV) stratified by Sex and Race/Ethnicity



Median OS (95%CI)

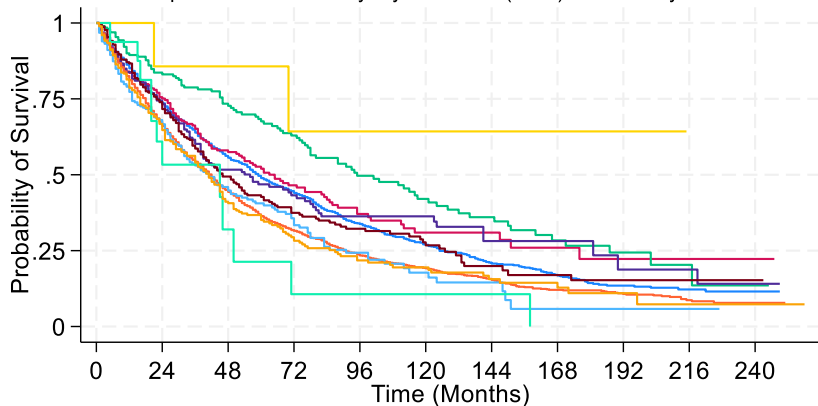
Female/NHW	130 m (126-135)
Female/NHB	141 m (119-154)
Female/A/PI	184 m (172 - 209)
Female/AI/AN	195 m (84-NR)
Female/Hispanic	152 m (138 -166)
Male/NHW	155 m (151-161)
Male/NHB	158 m (132-196)
Male/A/PI	186 m (173-208)
MaleAI/AN	195 m (93-NR)
MaleHispanic	197 m (172-217)

Number at risk

Female/NHW	7604	6203	4791	3572	2580	1802	1213	756	429	194	46
Female/NHB	609	486	377	284	202	135	95	58	35	10	2
Female/A/PI	636	538	422	341	266	196	133	91	61	26	6
Female/AI/AN	39	30	27	18	14	10	8	5	5	3	1
Female/Hispanic	795	624	496	393	289	208	137	80	51	24	10
Male/NHW	10022	8405	6673	5265	3955	2857	2056	1425	875	409	115
Male/NHB	826	669	530	415	311	206	154	105	62	27	9
Male/A/PI	788	650	531	436	331	254	191	141	84	42	9
Male/AI/AN	66	55	42	30	21	15	12	8	6	3	1
Male/Hispanic	1100	882	725	570	423	298	219	153	99	56	15

8c

Overall survival of patients with Primary myelofibrosis (PMF) stratified by Sex and Race/Ethnicity



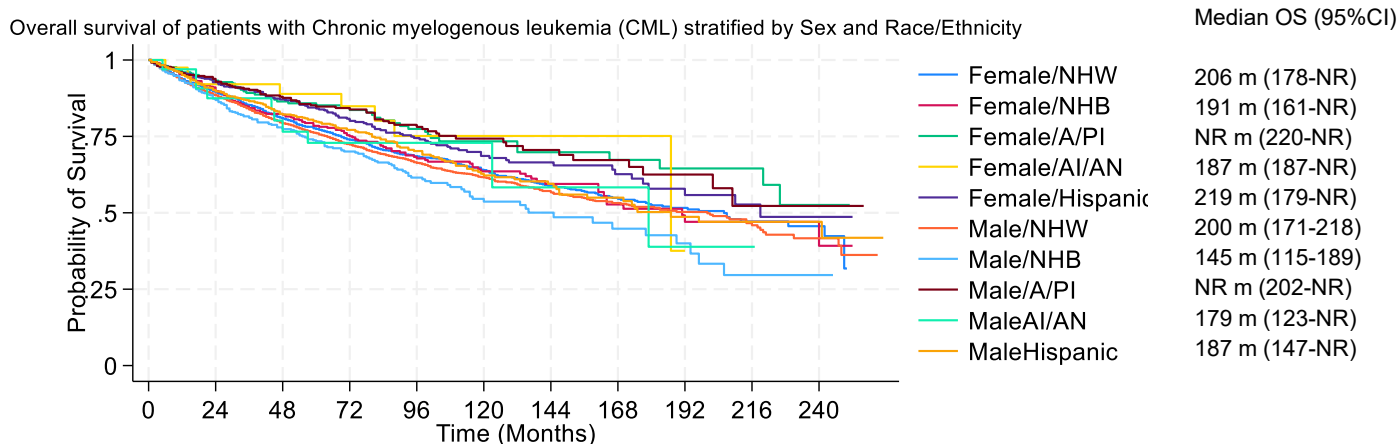
Median OS (95%CI)

Female/NHW	59 m (55-64)
Female/NHB	65 m (51-83)
Female/A/PI	95 m (78 -121)
Female/AI/AN	NR (NR)
Female/Hispanic	56 m (38-76)
Male/NHW	42 m (39-44)
Male/NHB	41 m (32-51)
Male/A/PI	46 m (39-55)
MaleAI/AN	45 m (20-50)
MaleHispanic	41 m (33-46)

Number at risk

Female/NHW	1714	1129	748	501	314	191	123	73	42	19	7
Female/NHB	237	157	102	64	36	21	14	8	5	2	2
Female/A/PI	198	142	106	80	50	36	26	16	10	3	1
Female/AI/AN	7	6	4	3	3	1	1	1	1	0	0
Female/Hispanic	193	122	68	45	32	22	11	10	4	4	2
Male/NHW	2740	1635	920	542	335	214	137	74	52	24	6
Male/NHB	249	148	79	47	22	11	6	2	2	1	0
Male/A/PI	258	162	98	61	43	28	14	11	6	3	1
Male/AI/AN	16	8	3	1	1	1	1	0	0	0	0
Male/Hispanic	275	163	87	50	31	23	14	9	3	1	1

8d

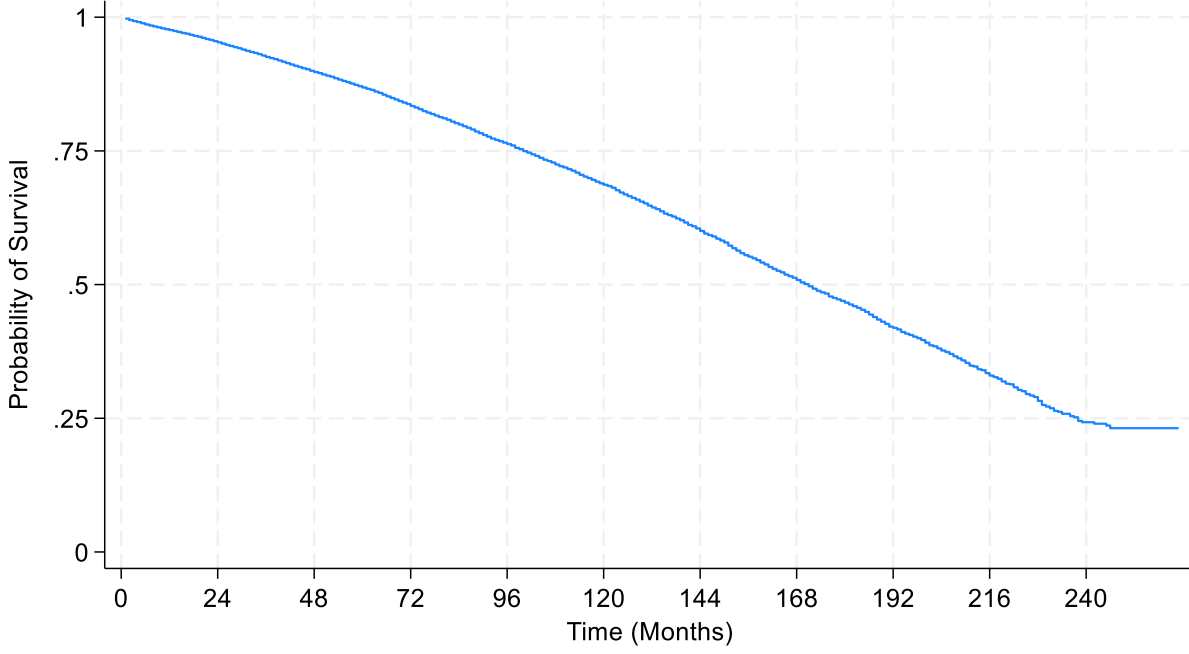


Number at risk											
	0	24	48	72	96	120	144	168	192	216	240
Female/NHW	2626	1979	1476	1065	741	461	266	177	108	54	16
Female/NHB	519	375	288	215	135	96	65	37	23	12	6
Female/A/PI	259	195	148	110	80	52	32	26	20	13	4
Female/AI/AN	41	32	28	21	14	8	6	2	1	0	0
Female/Hispanic	554	405	305	226	163	103	68	43	28	14	2
Male/NHW	3457	2584	1949	1378	942	612	369	233	131	68	25
Male/NHB	536	386	275	192	113	60	33	22	12	6	1
Male/A/PI	364	296	222	172	115	67	46	30	18	7	3
Male/AI/AN	34	26	22	19	13	6	3	3	1	1	0
Male/Hispanic	786	558	414	300	181	114	72	49	31	17	9

Figure S9: Age adjusted Overall Survival curves for patients living with Myeloproliferative Neoplasms in the United States between 2000-2021

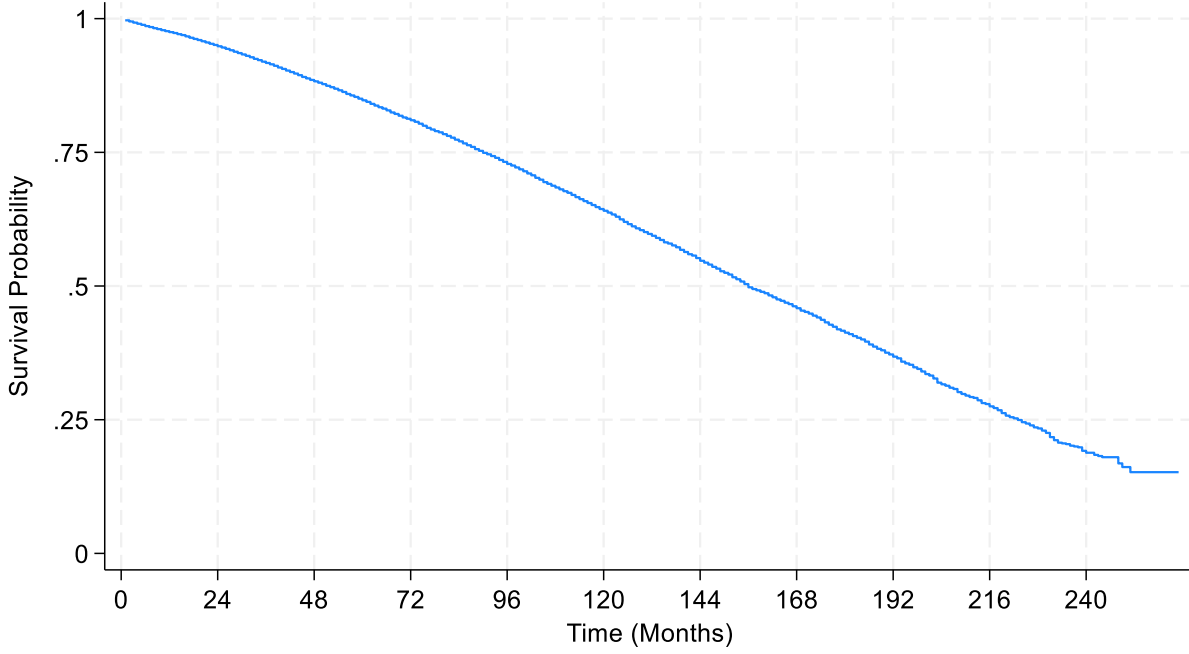
9a

Age adjusted survival curve -ET



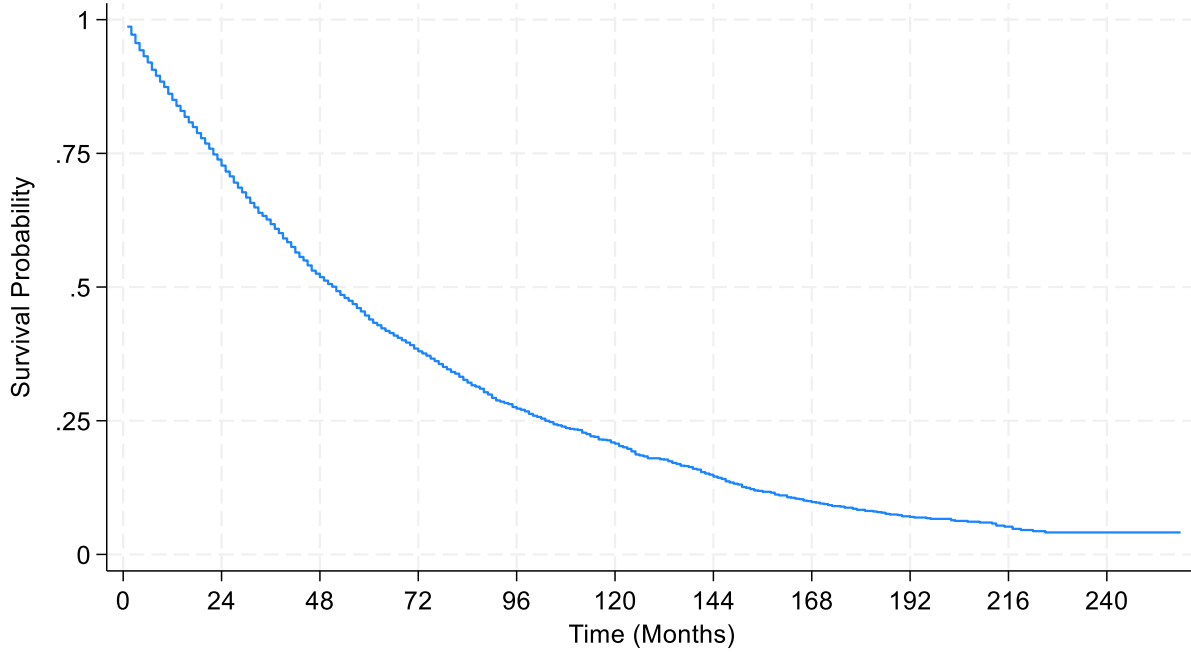
9b

Age adjusted survival curve -PV



9c

Age adjusted survival curve -PMF



9d

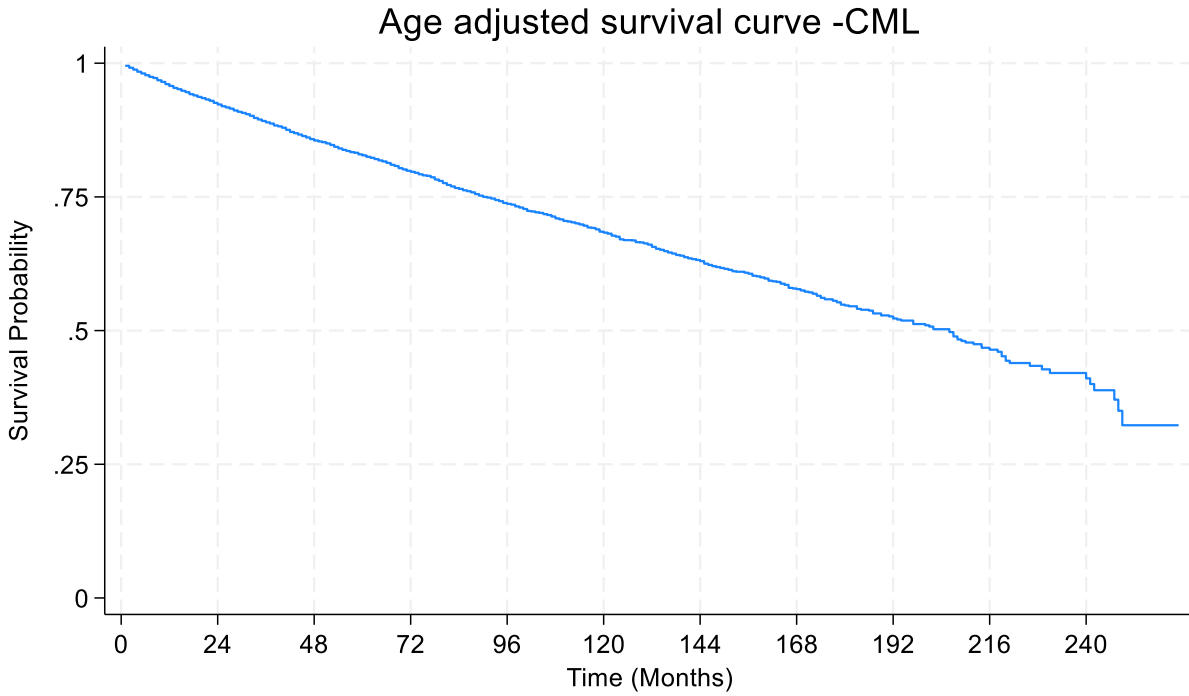
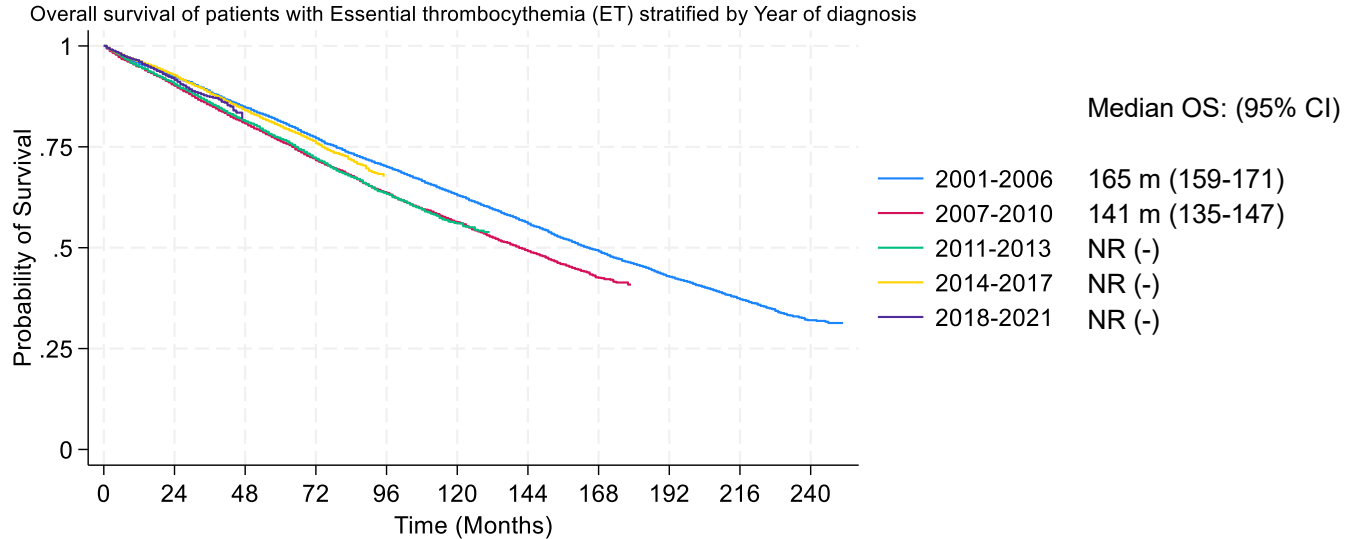


Figure S10- Overall Survival curves for patients living with Myeloproliferative Neoplasms in the United States between 2000-2021 stratified by Year of Diagnosis

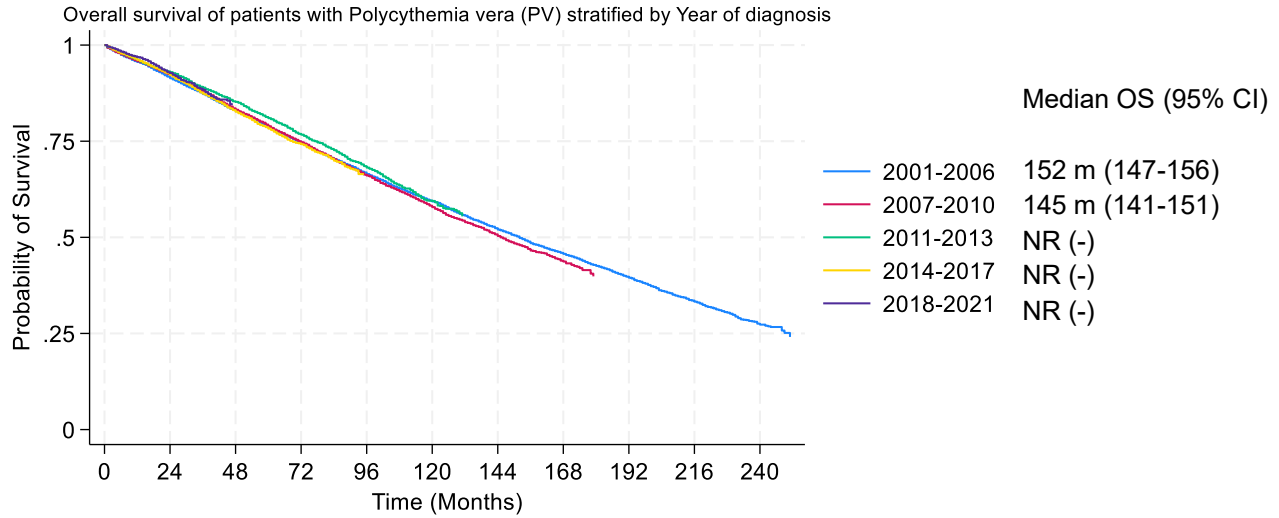
10a



Number at risk

2001-2006	4160	3833	3517	3202	2892	2597	2289	1988	1371	645	205
2007-2010	4132	3722	3318	2930	2564	2246	1455	403	0	0	0
2011-2013	3356	3039	2702	2371	2036	560	0	0	0	0	0
2014-2017	5851	5348	4758	2042	0	0	0	0	0	0	0
2018-2021	6151	2838	0	0	0	0	0	0	0	0	0

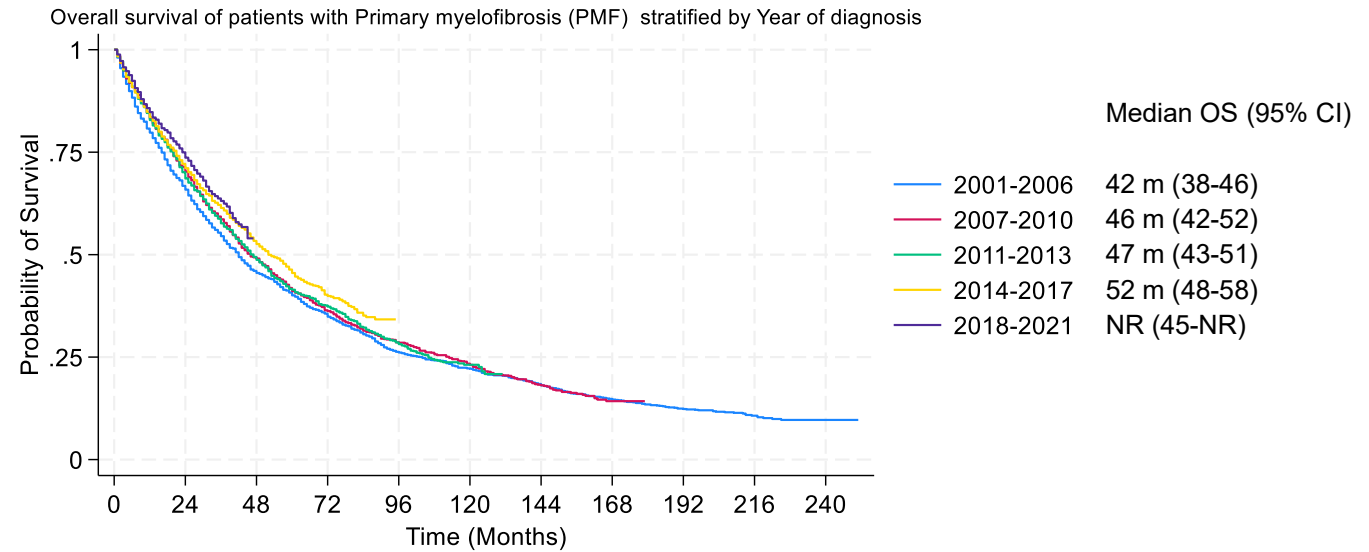
10b



Number at risk

2001-2006	5531	5061	4569	4105	3650	3237	2833	2456	1722	793	209
2007-2010	3960	3647	3282	2929	2573	2236	1426	393	0	0	0
2011-2013	3408	3148	2862	2563	2241	564	0	0	0	0	0
2014-2017	5020	4587	4036	1824	0	0	0	0	0	0	0
2018-2021	4830	2291	0	0	0	0	0	0	0	0	0

10c

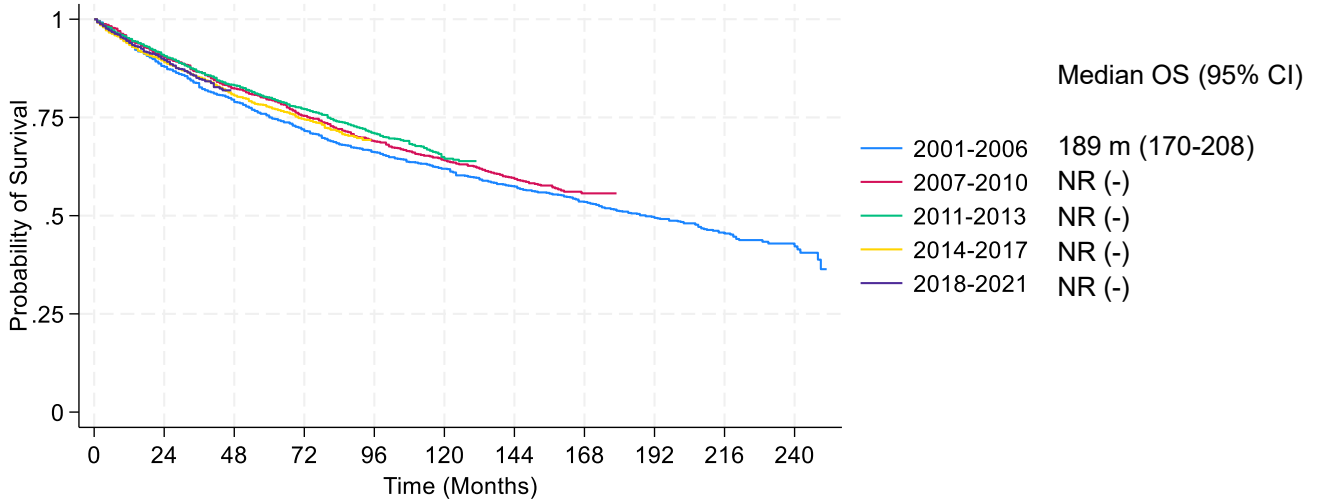


Number at risk

2001-2006	1198	796	548	424	313	264	218	175	125	57	19
2007-2010	1043	738	510	373	293	237	132	29	0	0	0
2011-2013	987	688	482	363	269	53	0	0	0	0	0
2014-2017	1358	962	699	247	0	0	0	0	0	0	0
2018-2021	1359	523	0	0	0	0	0	0	0	0	0

10d

Overall survival of patients with Chronic myelogenous leukemia (CML) stratified by Year of diagnosis

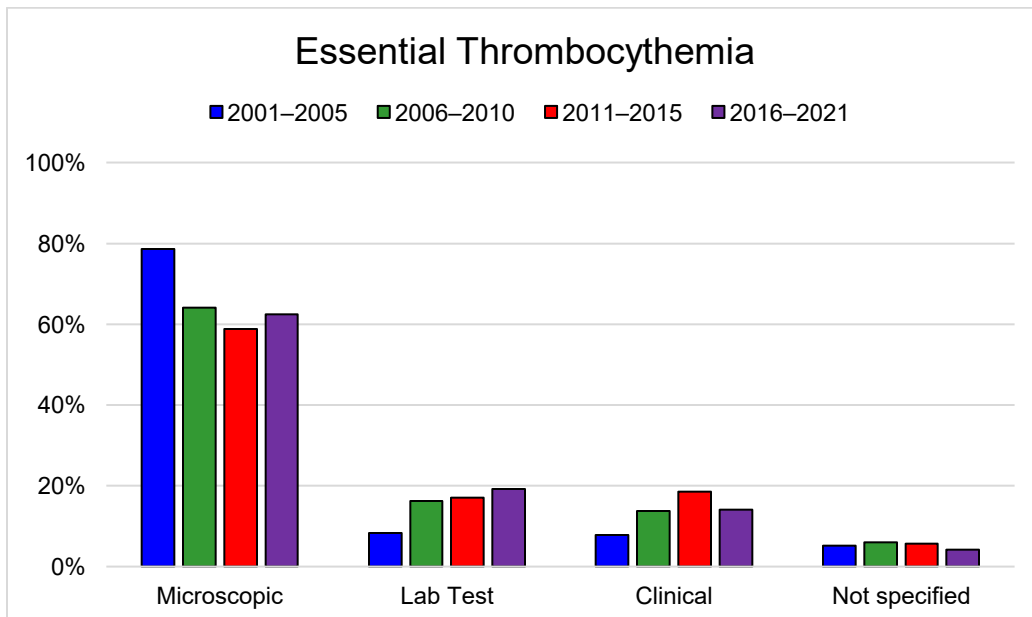


Number at risk

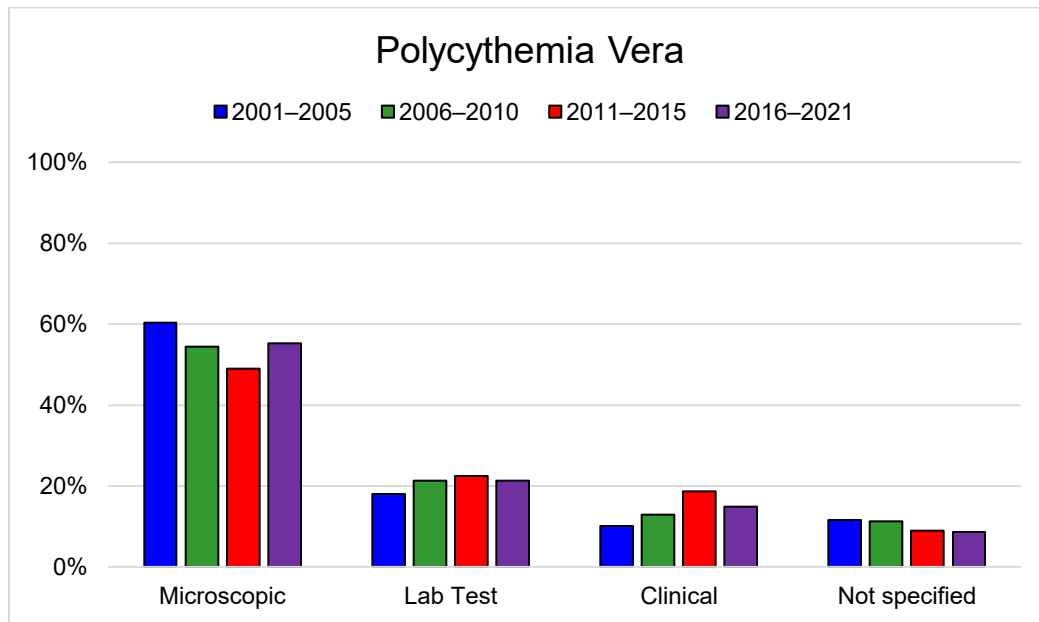
2001-2006	978	856	770	691	635	588	544	504	369	185	59
2007-2010	1136	1021	925	842	761	702	421	117	0	0	0
2011-2013	1658	1494	1360	1244	1122	302	0	0	0	0	0
2014-2017	2720	2385	2108	954	0	0	0	0	0	0	0
2018-2021	2768	1142	0	0	0	0	0	0	0	0	0

Figure S11 – Distribution of MPNs by Method of Diagnosis using SEER-17 (a) ET (b) PV (c) PMF (d) CML

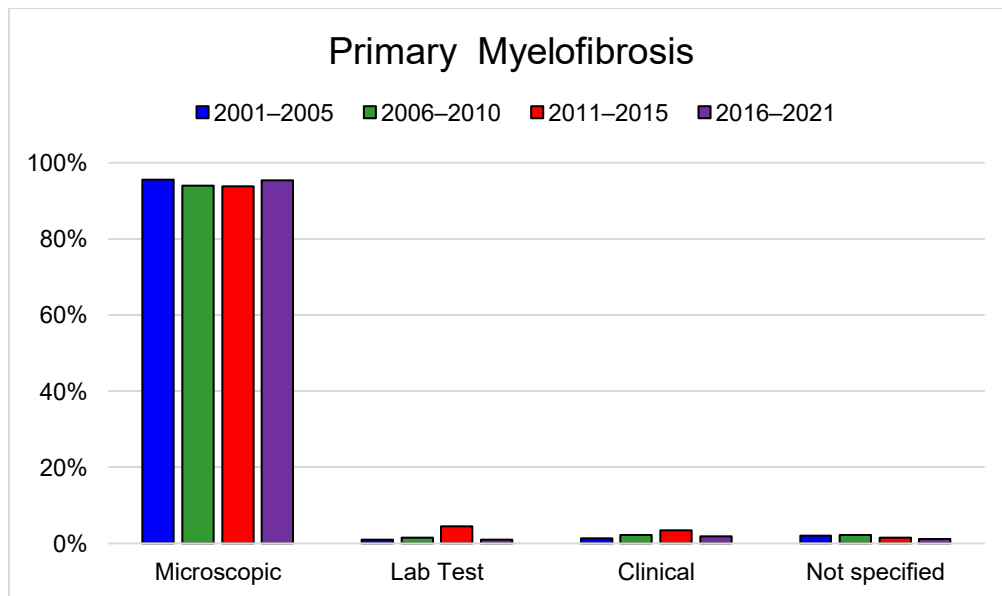
11a



11b



11c



11d

Chronic Myeloid leukemia, BCR ABL positive

■ 2001-2005 ■ 2006-2010 ■ 2011-2015 ■ 2016-2021

