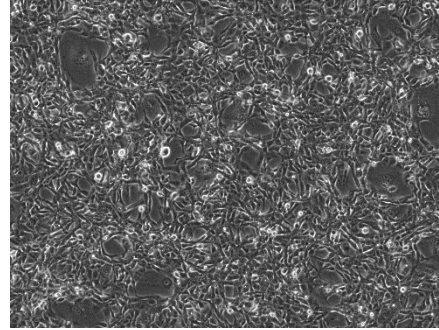
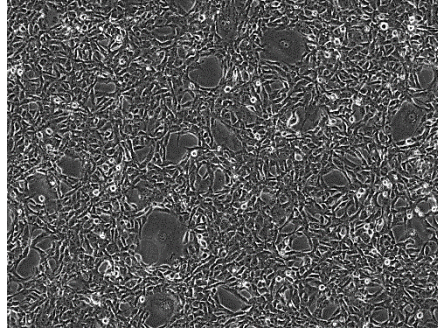


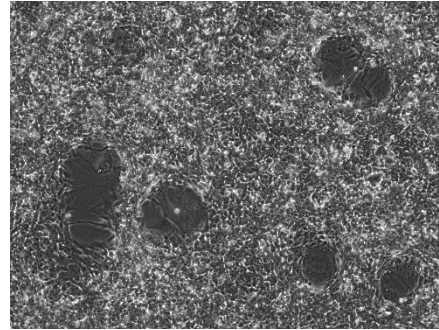
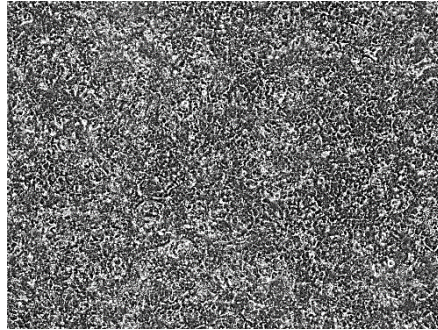
**Figure S1.**

**D17 GLP T1**

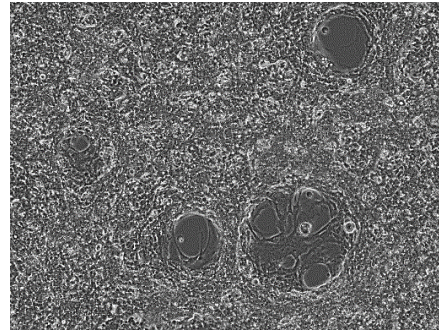
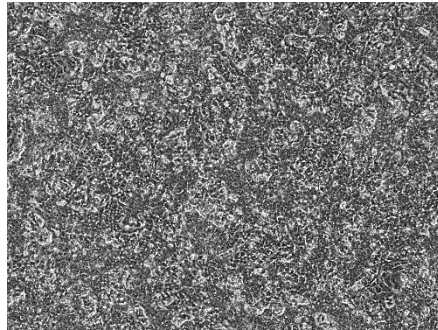
Day 0



Day 3



Day 5



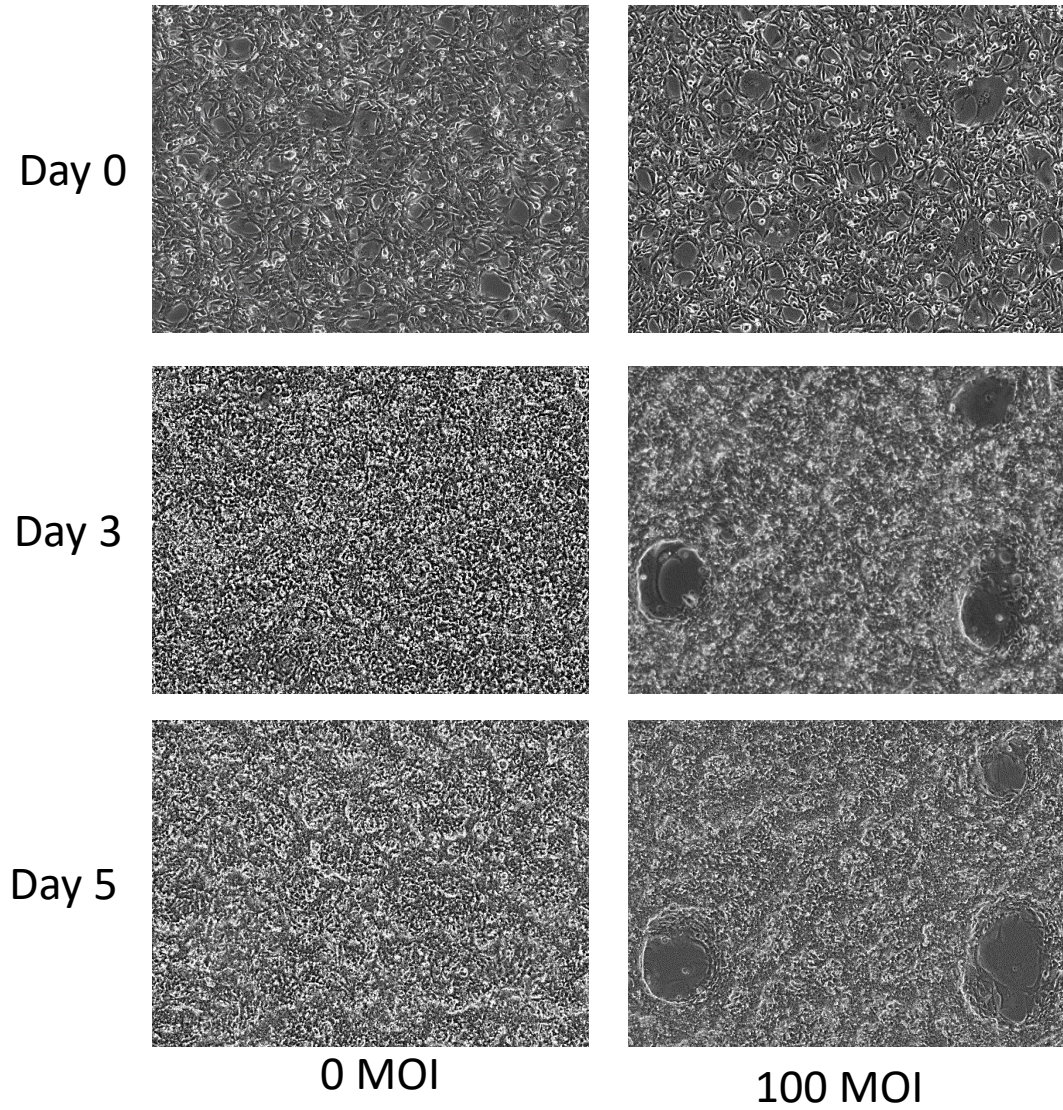
0 MOI

100 MOI

D17 GLP cells were infected with CAV-AU-M3 at MOI 0 and 100, and 1000, and images were visualized on day 0, 3, and 5 post-infection by inverted microscopy (Keyence) at 10X magnification. This represents three independent experiments.

**Figure S2.**

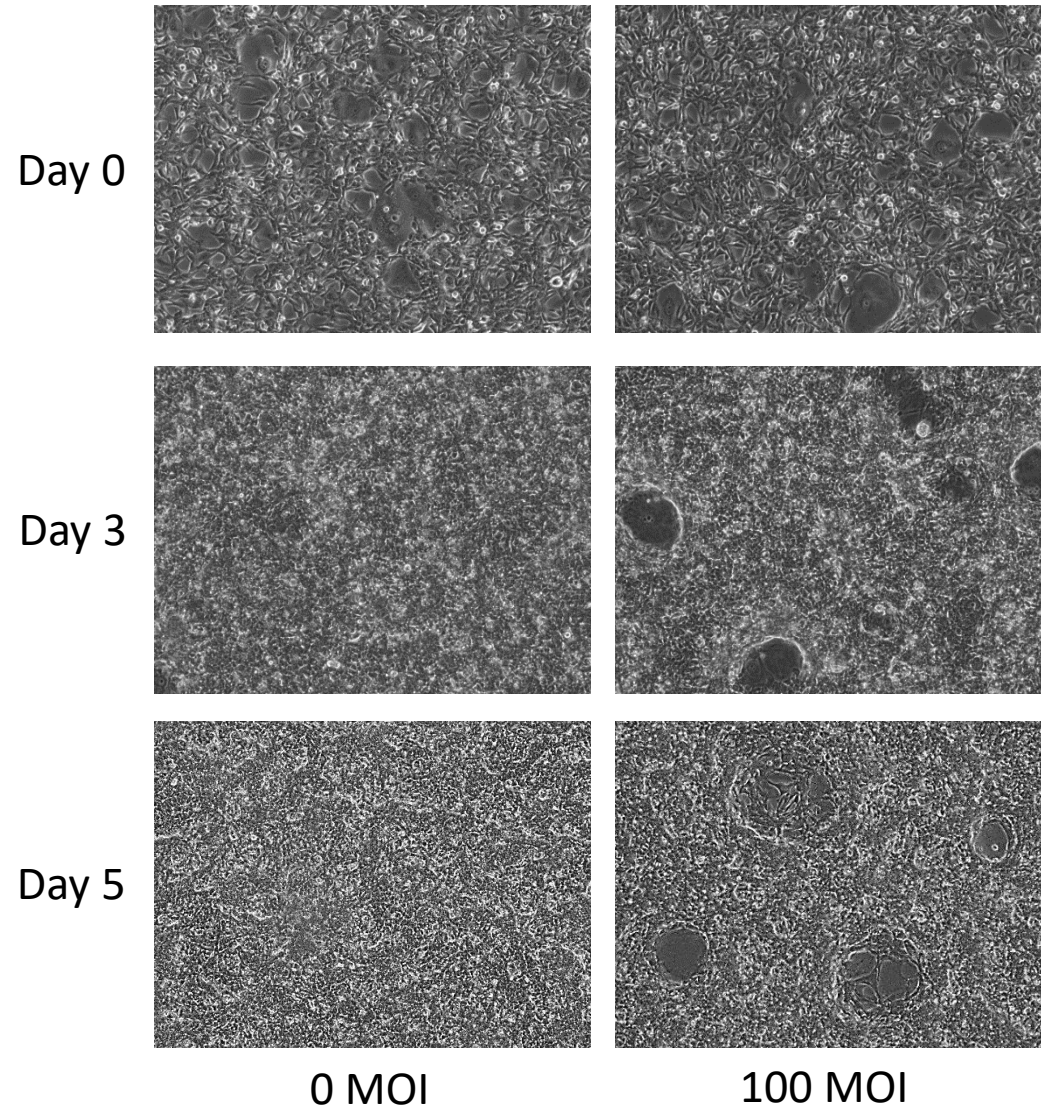
**D17 GLP T2**



D17 GLP cells were infected with CAV-AU-M3 at MOI 0 and 100, and 1000, and images were visualized on day 0, 3, and 5 post-infection by inverted microscopy (Keyence) at 10X magnification. This represents three independent experiments.

**Figure S3.**

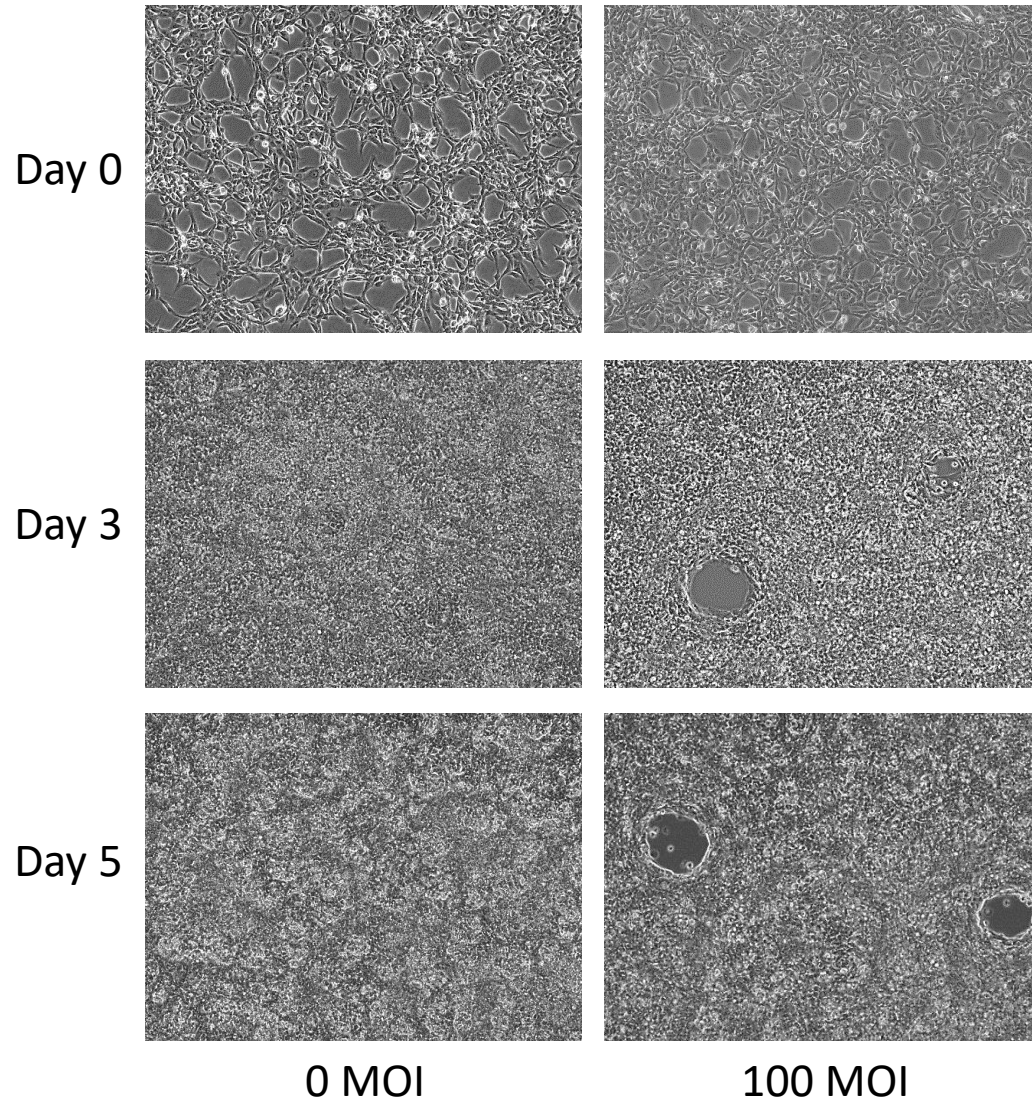
**D17 GLP T3**



**D17 GLP cells were infected with CAV-AU-M3 at MOI 0 and 100, and 1000, and images were visualized on day 0, 3, and 5 post-infection by inverted microscopy (Keyence) at 10X magnification. This represents three independent experiments.**

**Figure S4.**

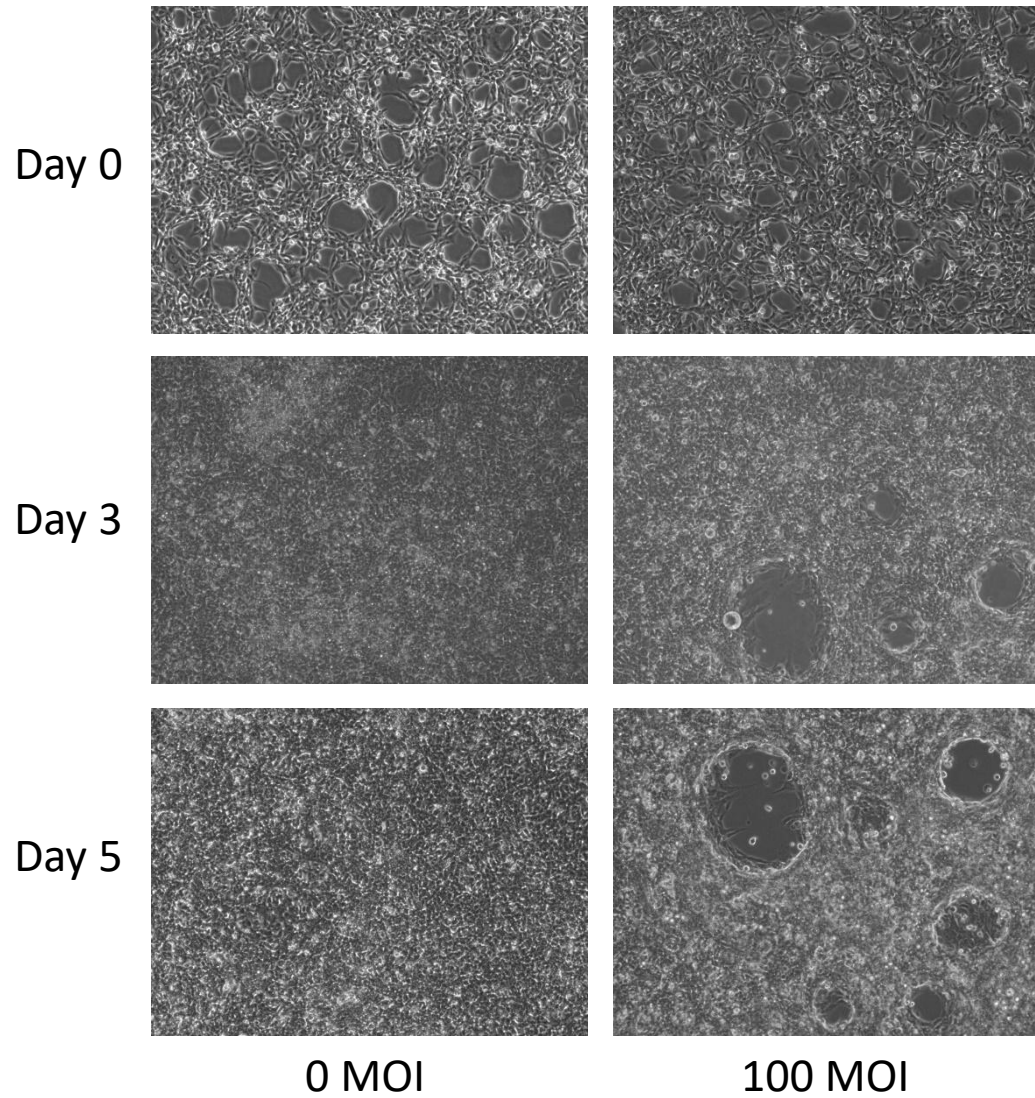
CF11 GLL T1



CF11 GLL cells were infected with CAV-AU-M3 at MOI 0 and 100, and 1000, and images were visualized on day 0, 3, and 5 post-infection by inverted microscopy (Keyence) at 10X magnification. This represents three independent experiments.

**Figure S5.**

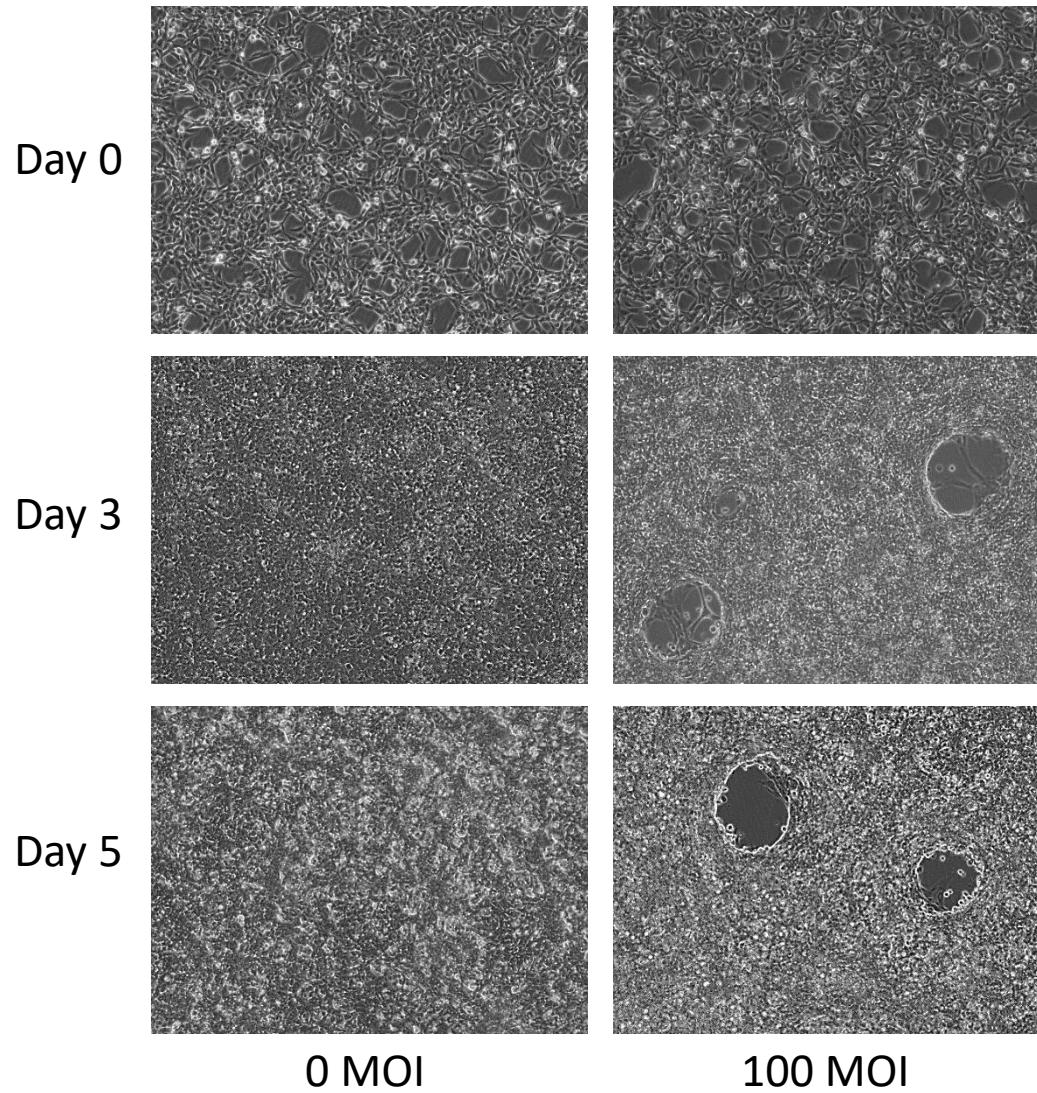
CF11 GLL T2



CF11 GLL cells were infected with CAV-AU-M3 at MOI 0 and 100, and 1000, and images were visualized on day 0, 3, and 5 post-infection by inverted microscopy (Keyence) at 10X magnification. This represents three independent experiments.

**Figure S6.**

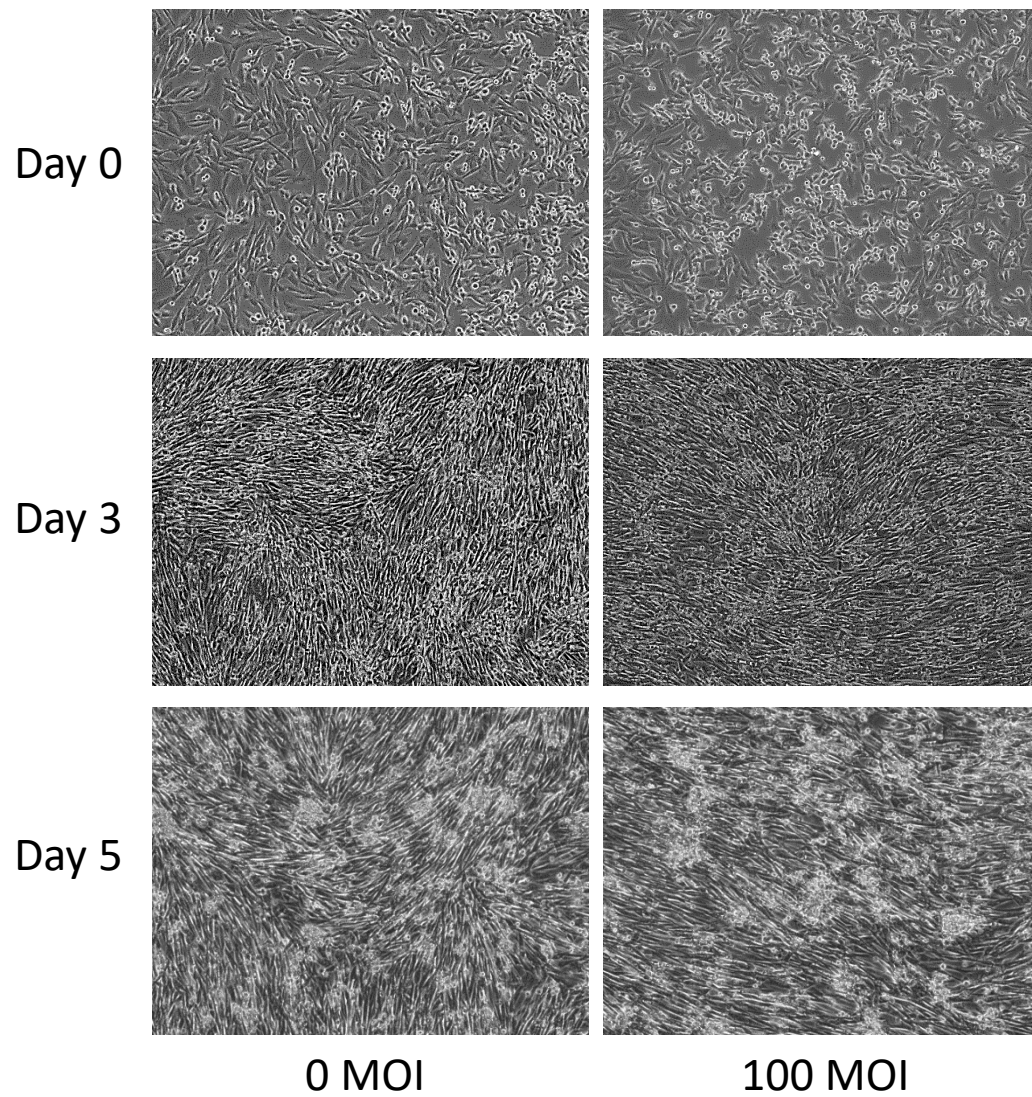
**CF11 GLL T3**



CF11 GLL cells were infected with CAV-AU-M3 at MOI 0 and 100, and 1000, and images were visualized on day 0, 3, and 5 post-infection by inverted microscopy (Keyence) at 10X magnification. This represents three independent experiments.

**Figure S7.**

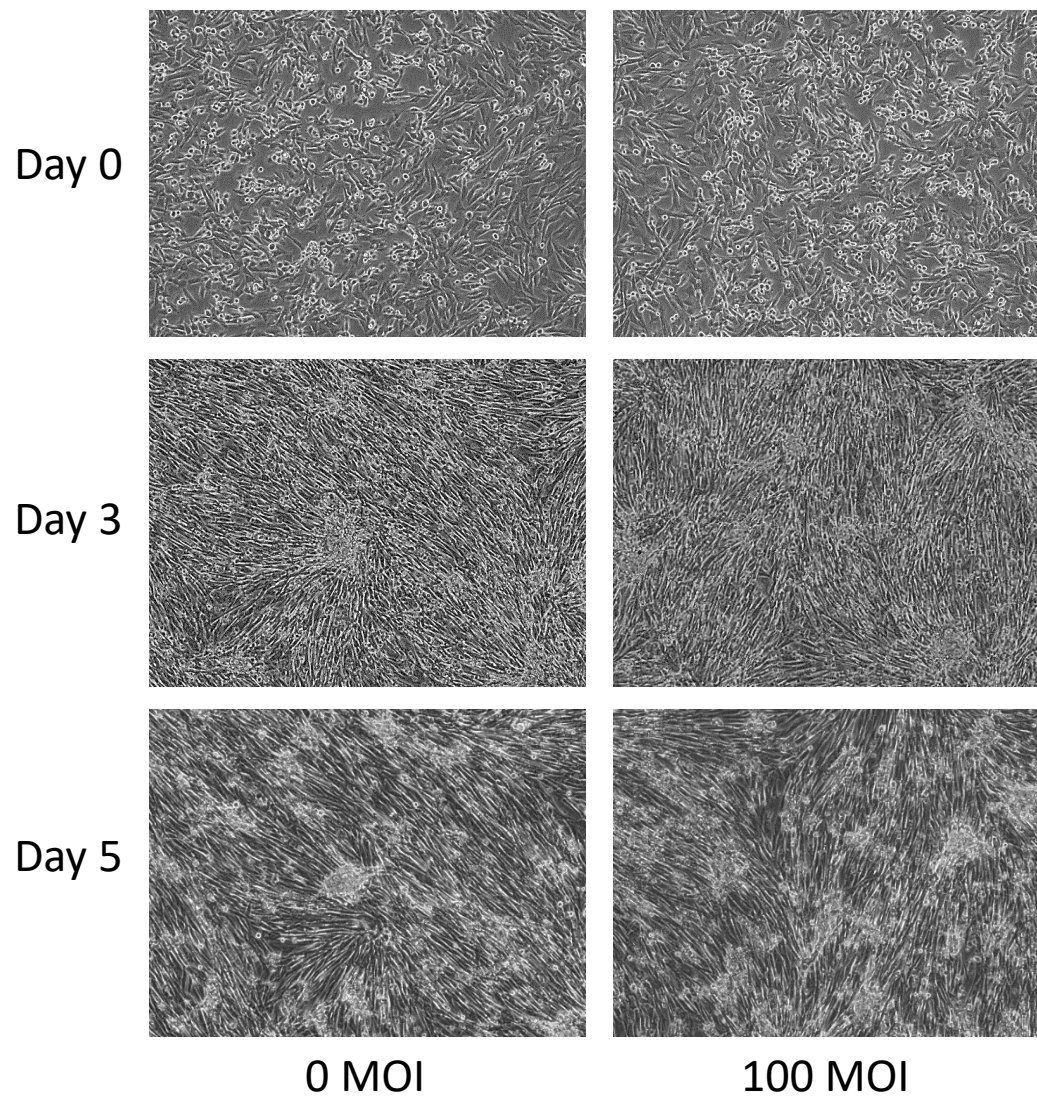
**D22 GLP T1**



D22 GLP cells were infected with CAV-AU-M3 at MOI 0 and 100, and 1000, and images were visualized on day 0, 3, and 5 post-infection by inverted microscopy (Keyence) at 10X magnification. This represents three independent experiments.

**Figure S8.**

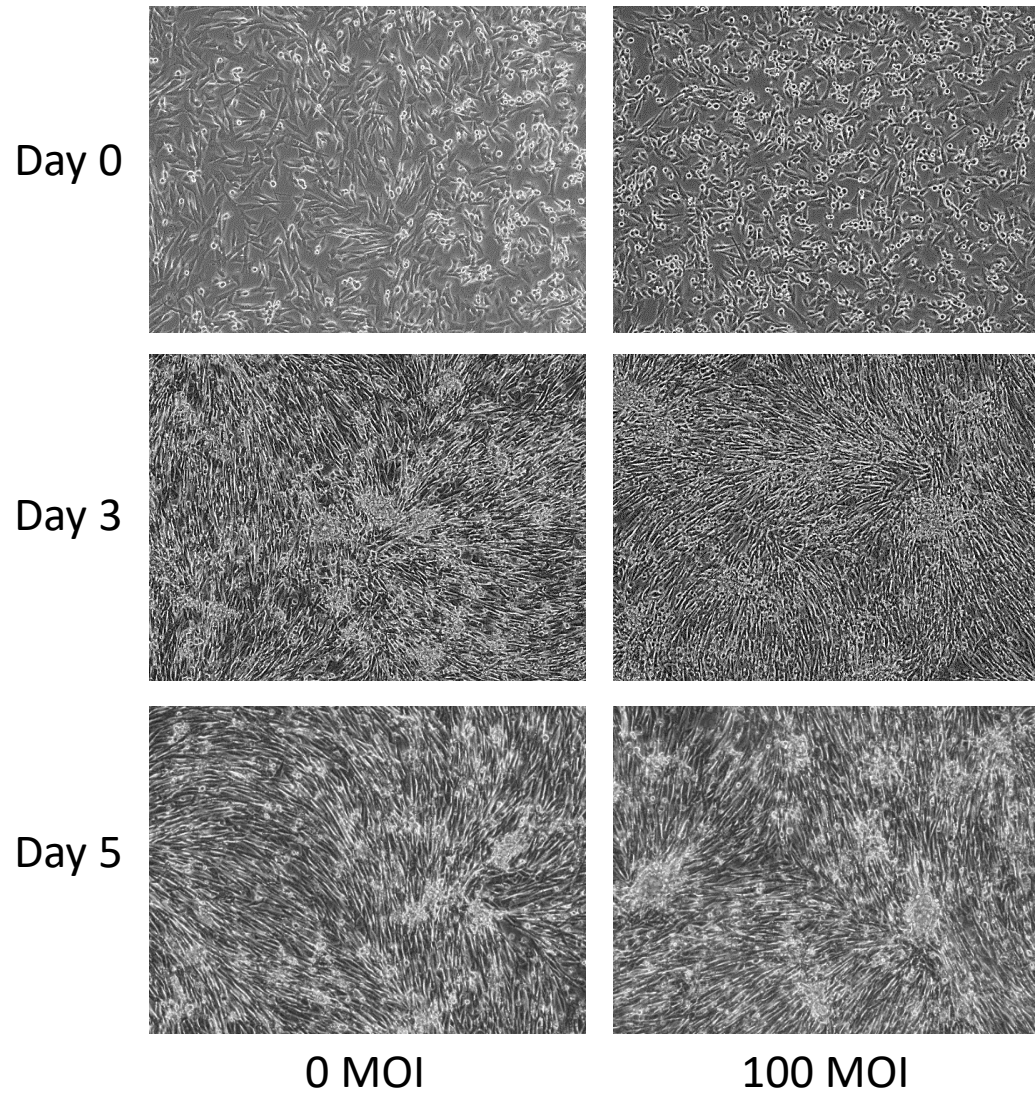
**D22 GLP T2**



D22 GLP cells were infected with CAV-AU-M3 at MOI 0 and 100, and 1000, and images were visualized on day 0, 3, and 5 post-infection by inverted microscopy (Keyence) at 10X magnification. This represents three independent experiments.

**Figure S9.**

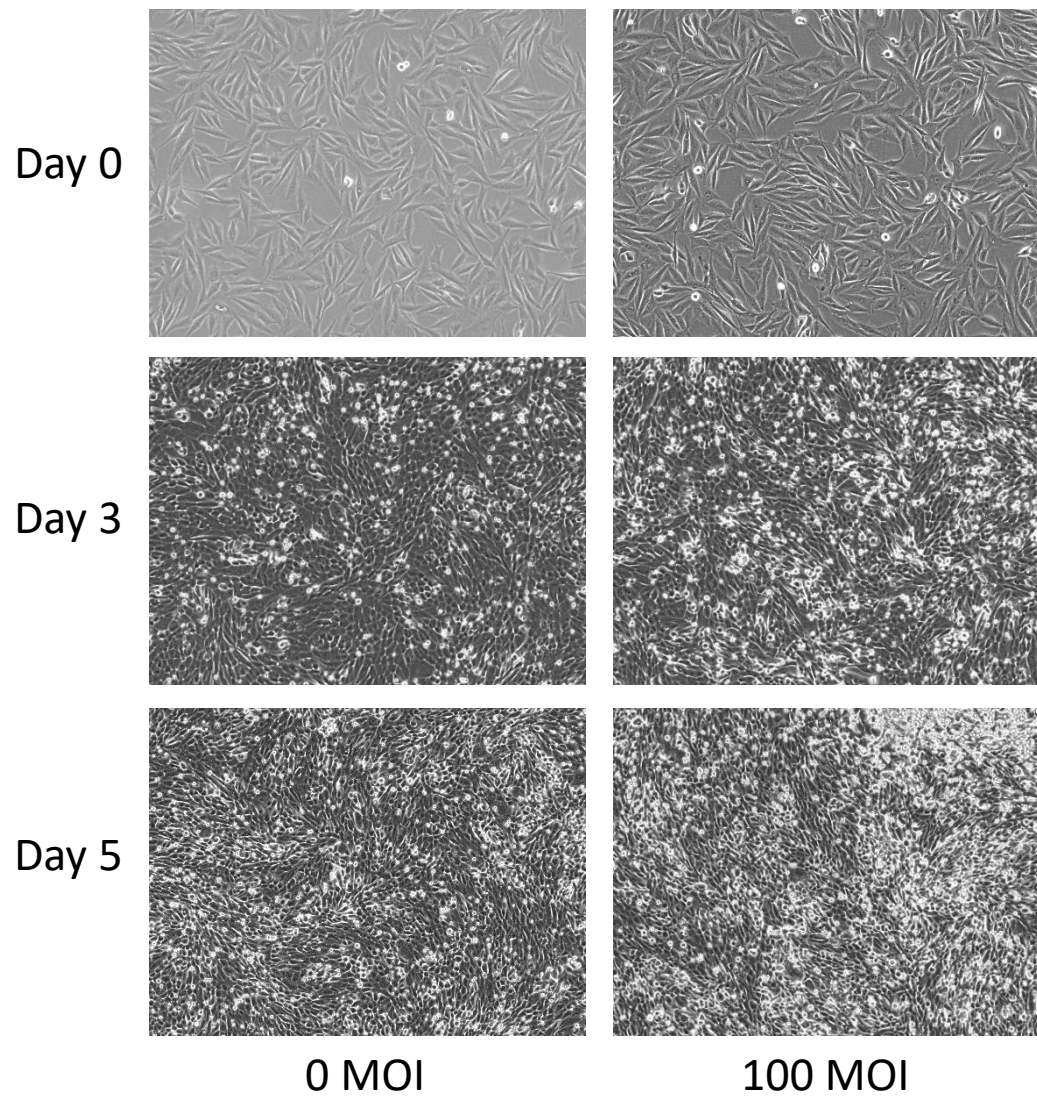
**D22 GLP T3**



D22 GLP cells were infected with CAV-AU-M3 at MOI 0 and 100, and 1000, and images were visualized on day 0, 3, and 5 post-infection by inverted microscopy (Keyence) at 10X magnification. This represents three independent experiments.

**Figure S10.**

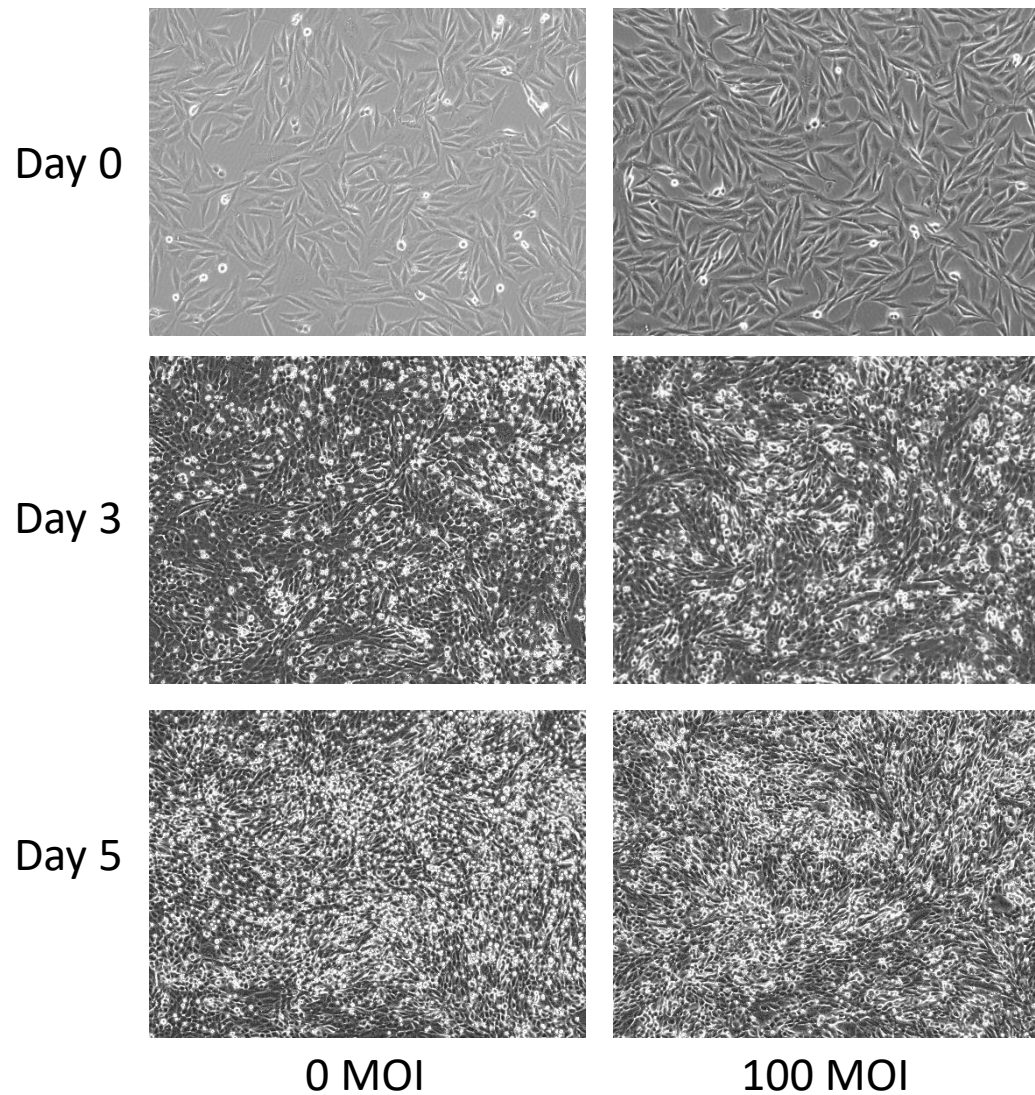
**MCKOS T1**



MCKOS cells were infected with CAV-AU-M3 at MOI 0 and 100, and 1000, and images were visualized on day 0, 3, and 5 post-infection by inverted microscopy (Keyence) at 10X magnification. This represents three independent experiments.

**Figure S11.**

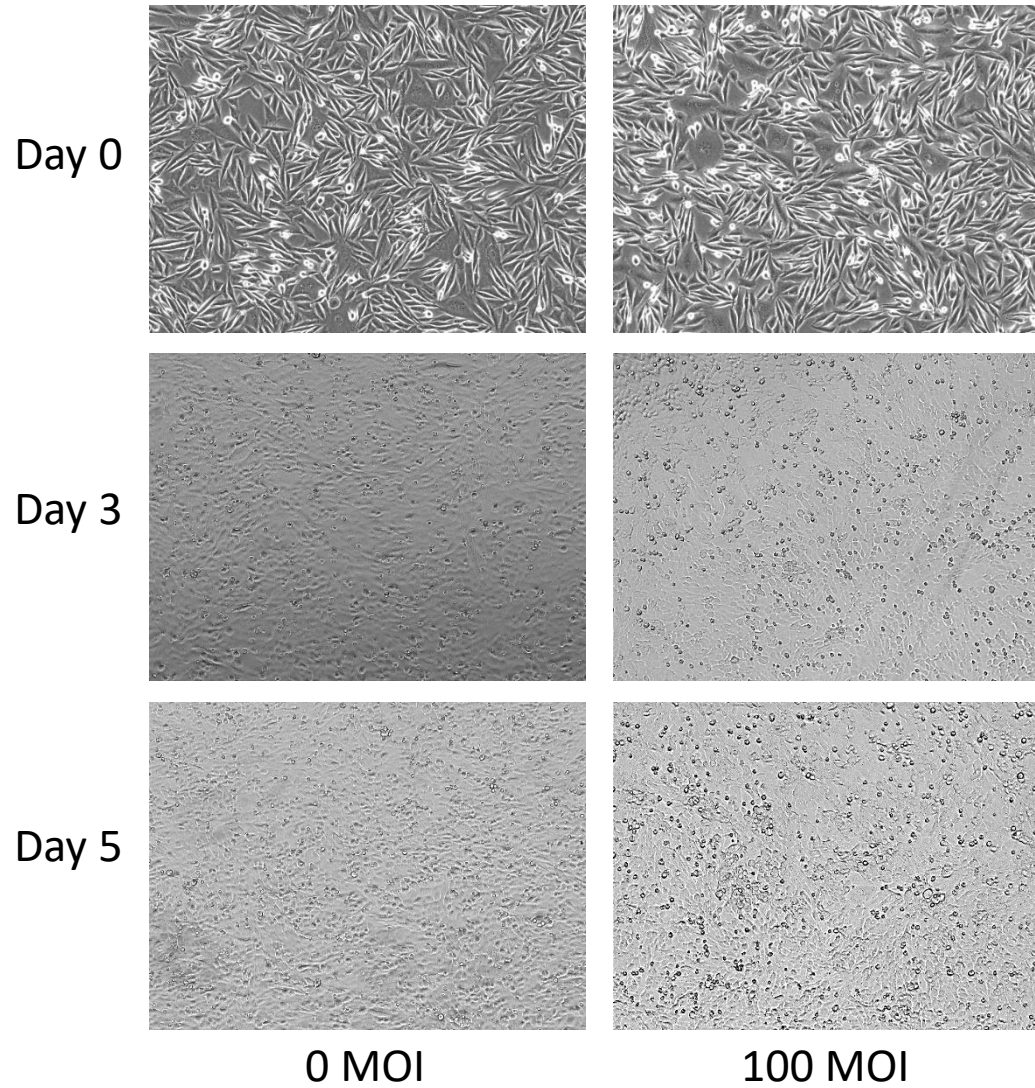
**MCKOS T2**



MCKOS cells were infected with CAV-AU-M3 at MOI 0 and 100, and 1000, and images were visualized on day 0, 3, and 5 post-infection by inverted microscopy (Keyence) at 10X magnification. This represents three independent experiments.

**Figure S12.**

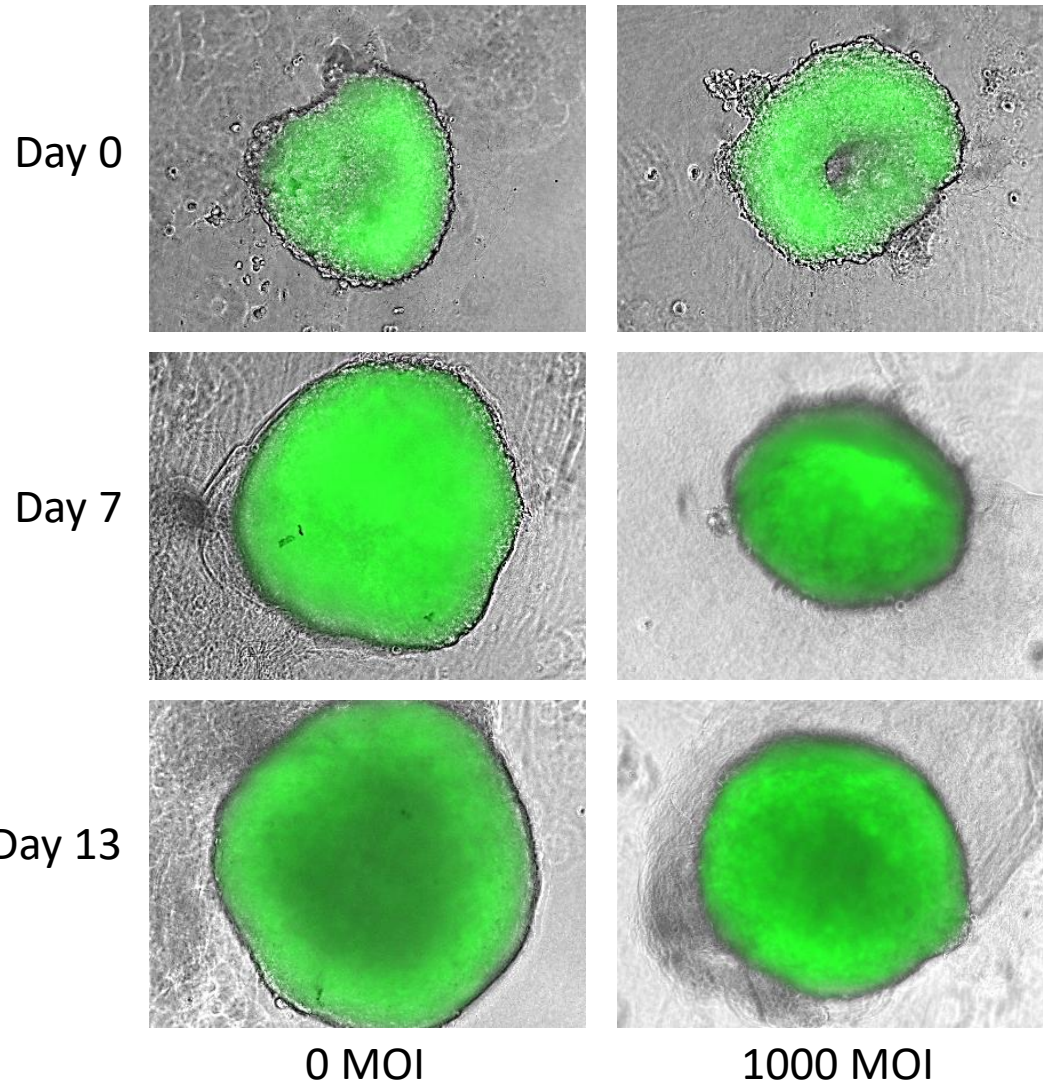
**MCKOS T3**



MCKOS cells were infected with CAV-AU-M3 at MOI 0 and 100, and 1000, and images were visualized on day 0, 3, and 5 post-infection by inverted microscopy (Keyence) at 10X magnification. This represents three independent experiments.

**Figure S13.**

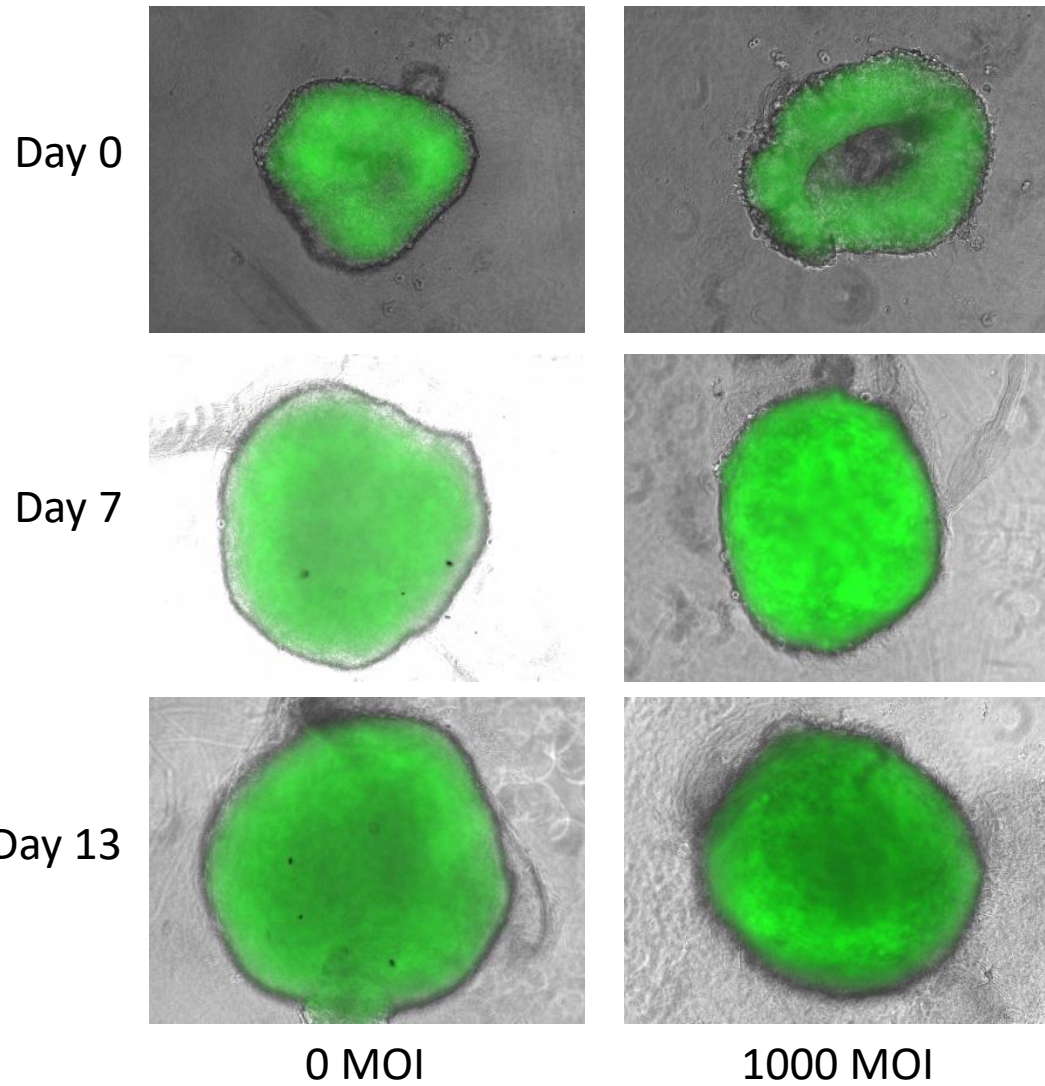
**D17 GLP T1**



D17 GLP cell lines spheroids were infected with CAV-AU-M3 at MOI 0 and 1000, and the spheroid shrinkage and cytopathic effects were visualized at Day 0, 7, and 13 post-infection by fluorescence microscopy (Keyence) at 10X magnification. This is a representation of three independent experiments.

**Figure S14.**

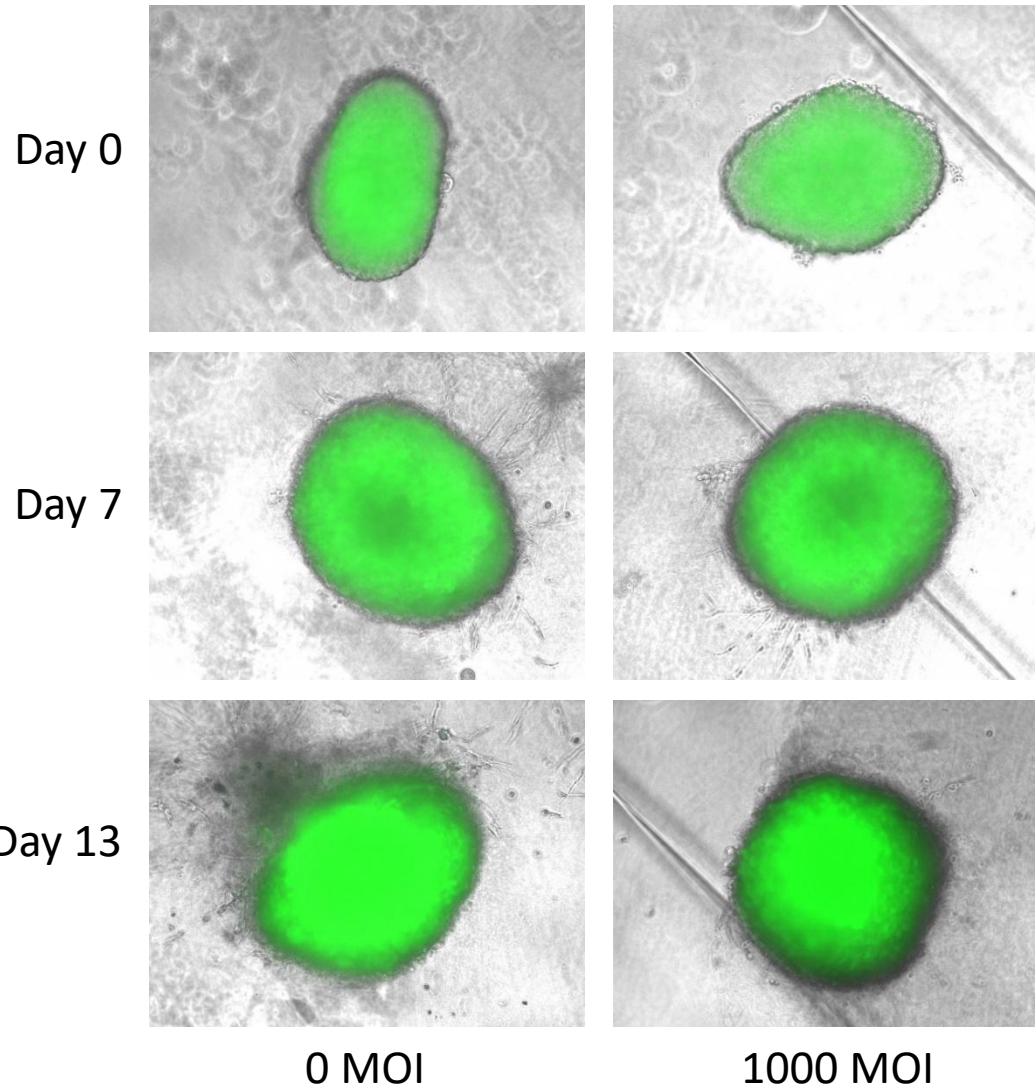
**D17 GLP T2**



D17 GLP cell lines spheroids were infected with CAV-AU-M3 at MOI 0 and 1000, and the spheroid shrinkage and cytopathic effects were visualized at Day 0, 7, and 13 post-infection by fluorescence microscopy (Keyence) at 10X magnification. This is a representation of three independent experiments.

**Figure S15.**

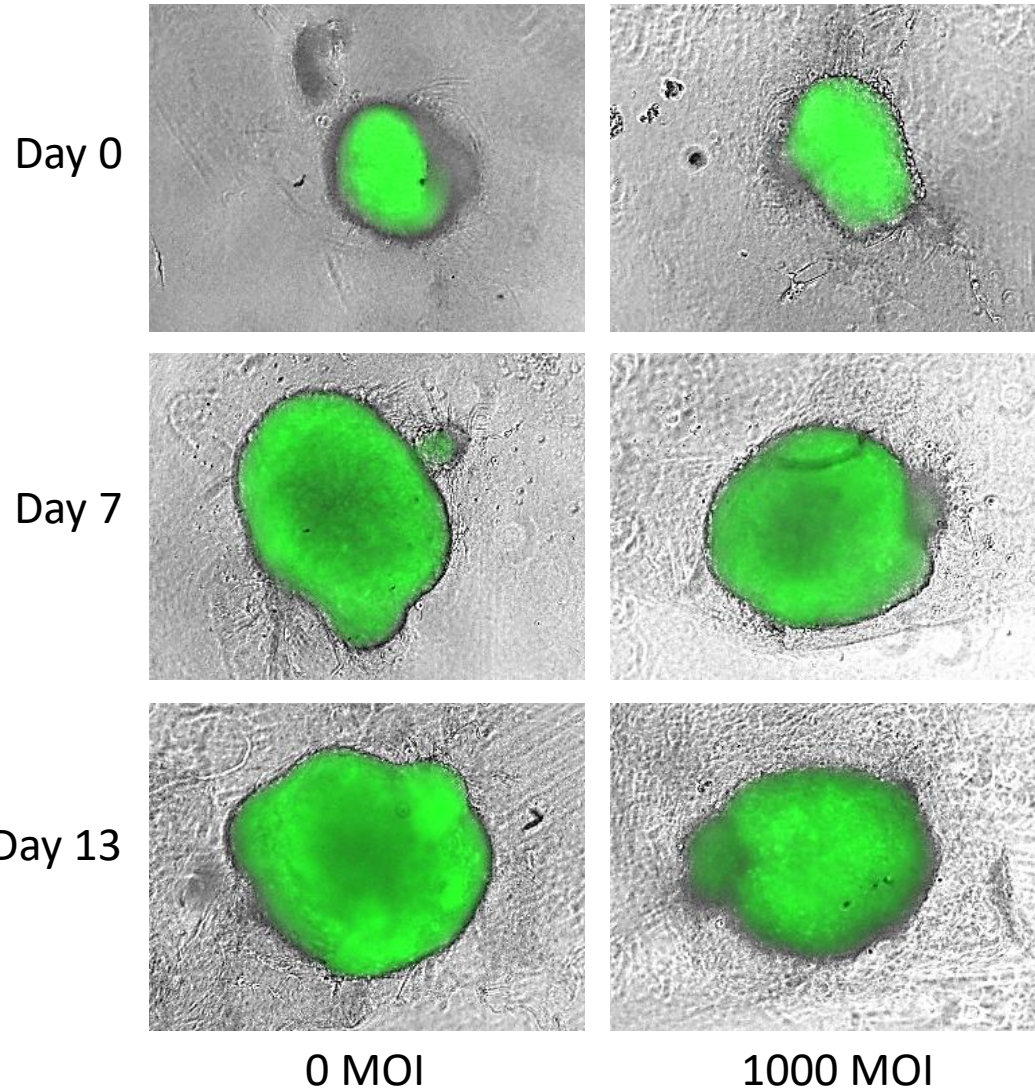
**D17 GLP T3**



D17 GLP cell lines spheroids were infected with CAV-AU-M3 at MOI 0 and 1000, and the spheroid shrinkage and cytopathic effects were visualized at Day 0, 7, and 13 post-infection by fluorescence microscopy (Keyence) at 10X magnification. This is a representation of three independent experiments.

**Figure S16.**

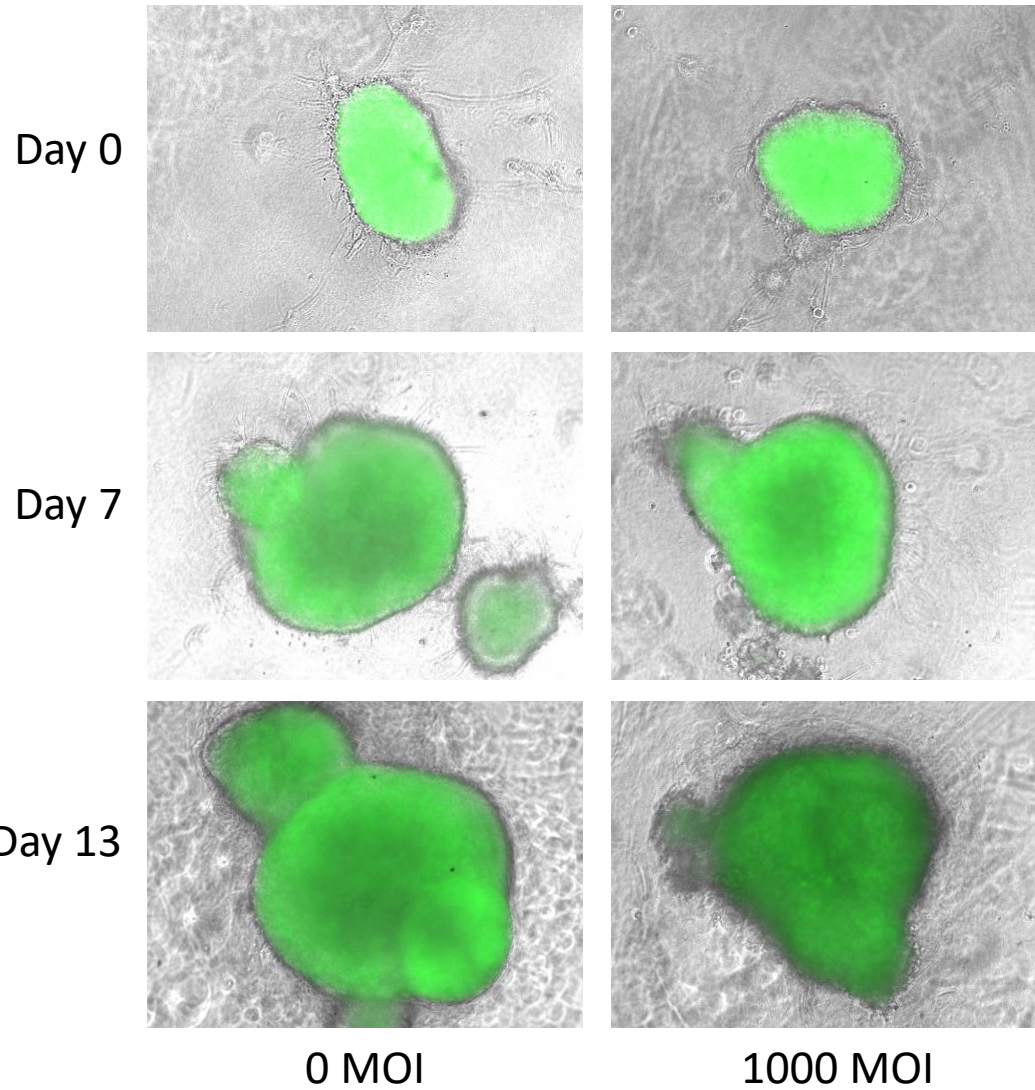
**CF11 GLL T1**



CF11 GLL cell lines spheroids were infected with CAV-AU-M3 at MOI 0 and 1000, and the spheroid shrinkage and cytopathic effects were visualized at Day 0, 7, and 13 post-infection by fluorescence microscopy (Keyence) at 10X magnification. This is a representation of three independent experiments.

**Figure S17.**

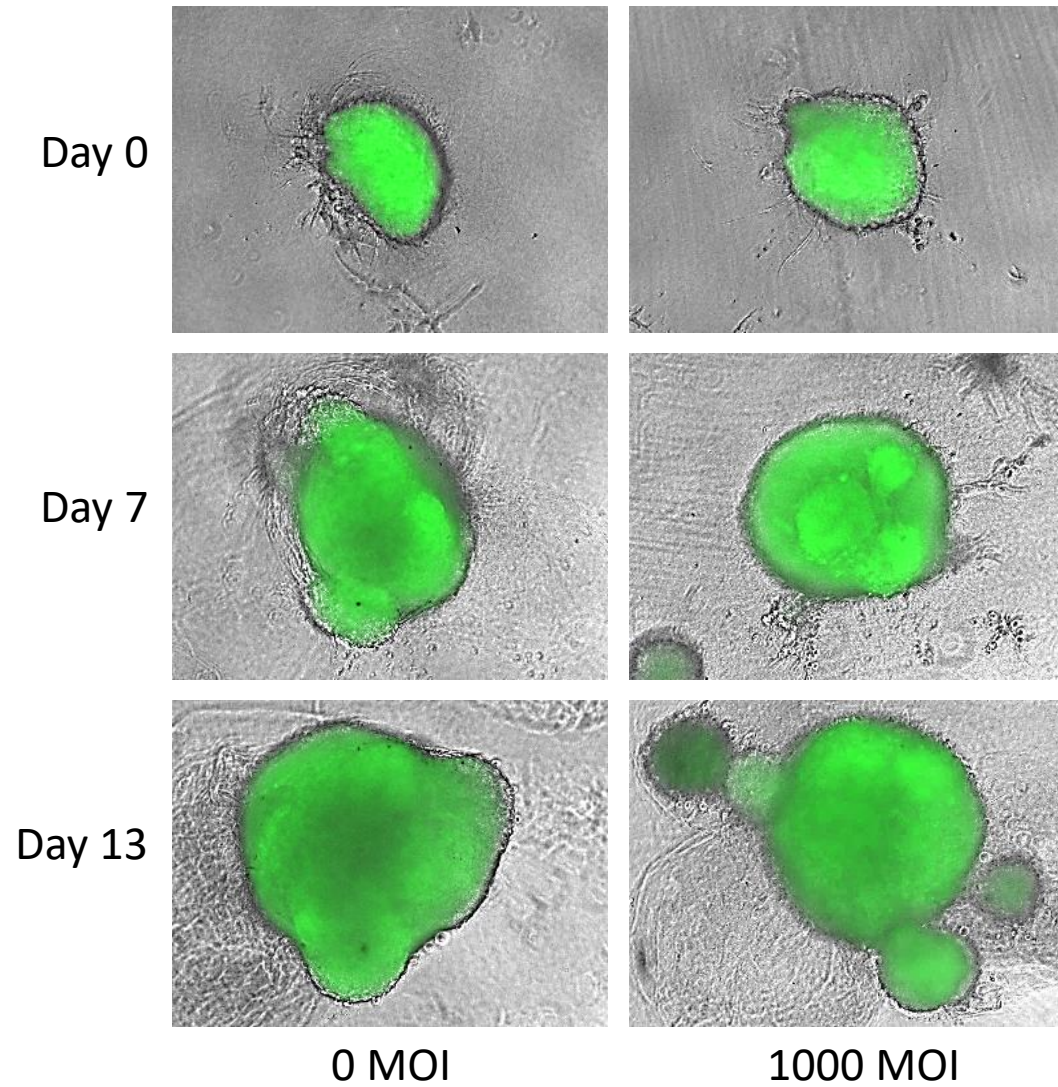
**CF11 GLL T2**



CF11 GLL cell lines spheroids were infected with CAV-AU-M3 at MOI 0 and 1000, and the spheroid shrinkage and cytopathic effects were visualized at Day 0, 7, and 13 post-infection by fluorescence microscopy (Keyence) at 10X magnification. This is a representation of three independent experiments.

**Figure S18.**

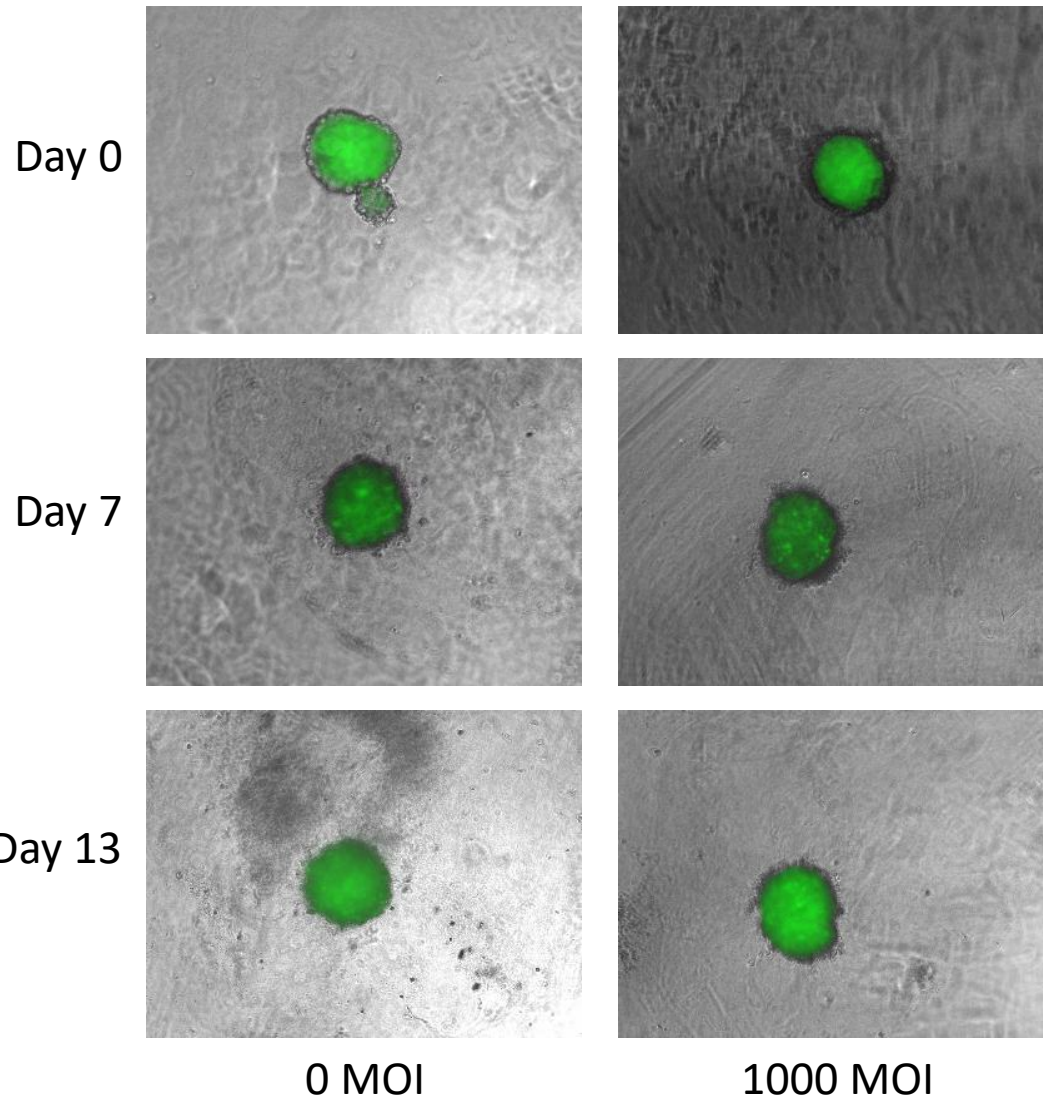
**CF11 GLL T3**



CF11 GLL cell lines spheroids were infected with CAV-AU-M3 at MOI 0 and 1000, and the spheroid shrinkage and cytopathic effects were visualized at Day 0, 7, and 13 post-infection by fluorescence microscopy (Keyence) at 10X magnification. This is a representation of three independent experiments.

**Figure S19.**

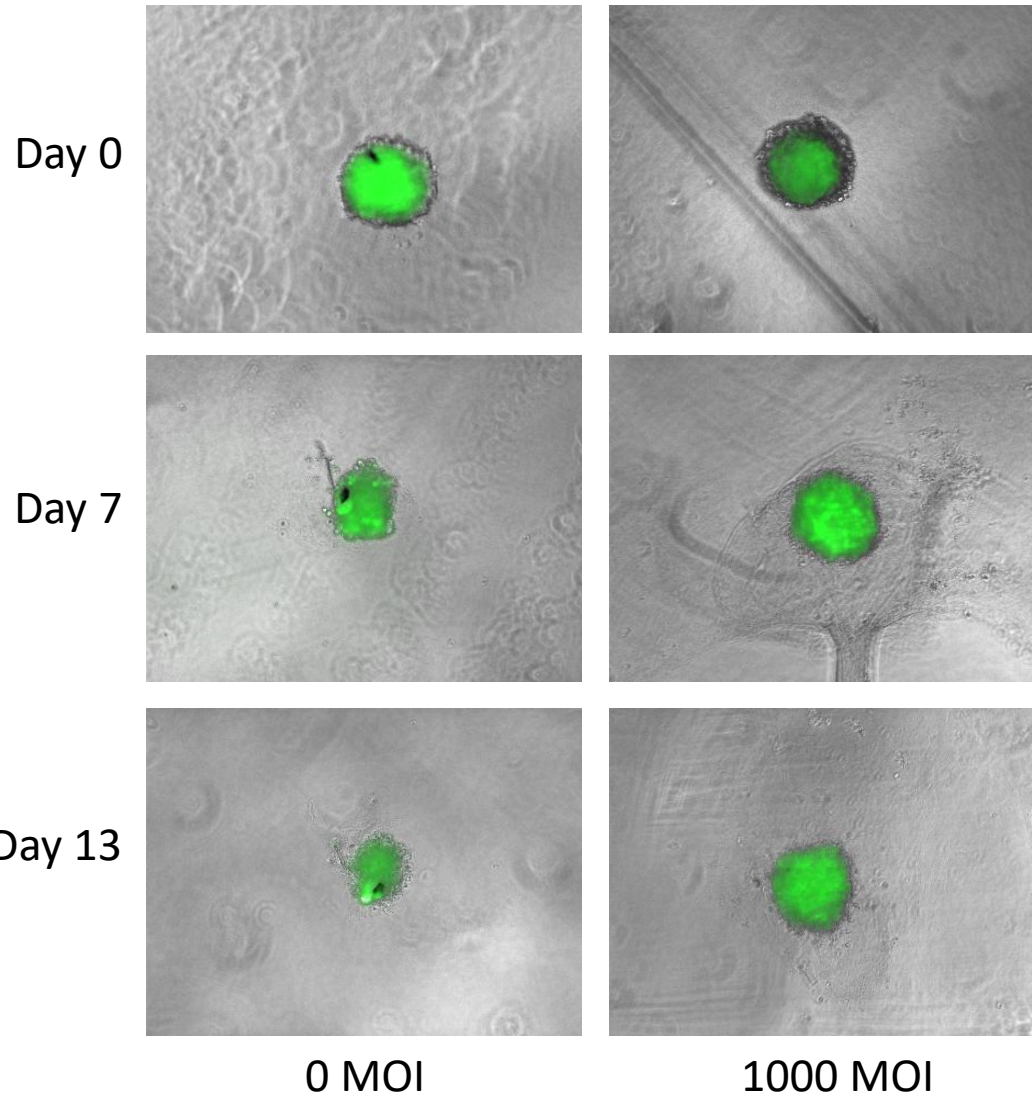
**D22 GLP T1**



D22 GLP cell lines spheroids were infected with CAV-AU-M3 at MOI 0 and 1000, and the spheroid shrinkage and cytopathic effects were visualized at Day 0, 7, and 13 post-infection by fluorescence microscopy (Keyence) at 10X magnification. This is a representation of three independent experiments.

**Figure S20.**

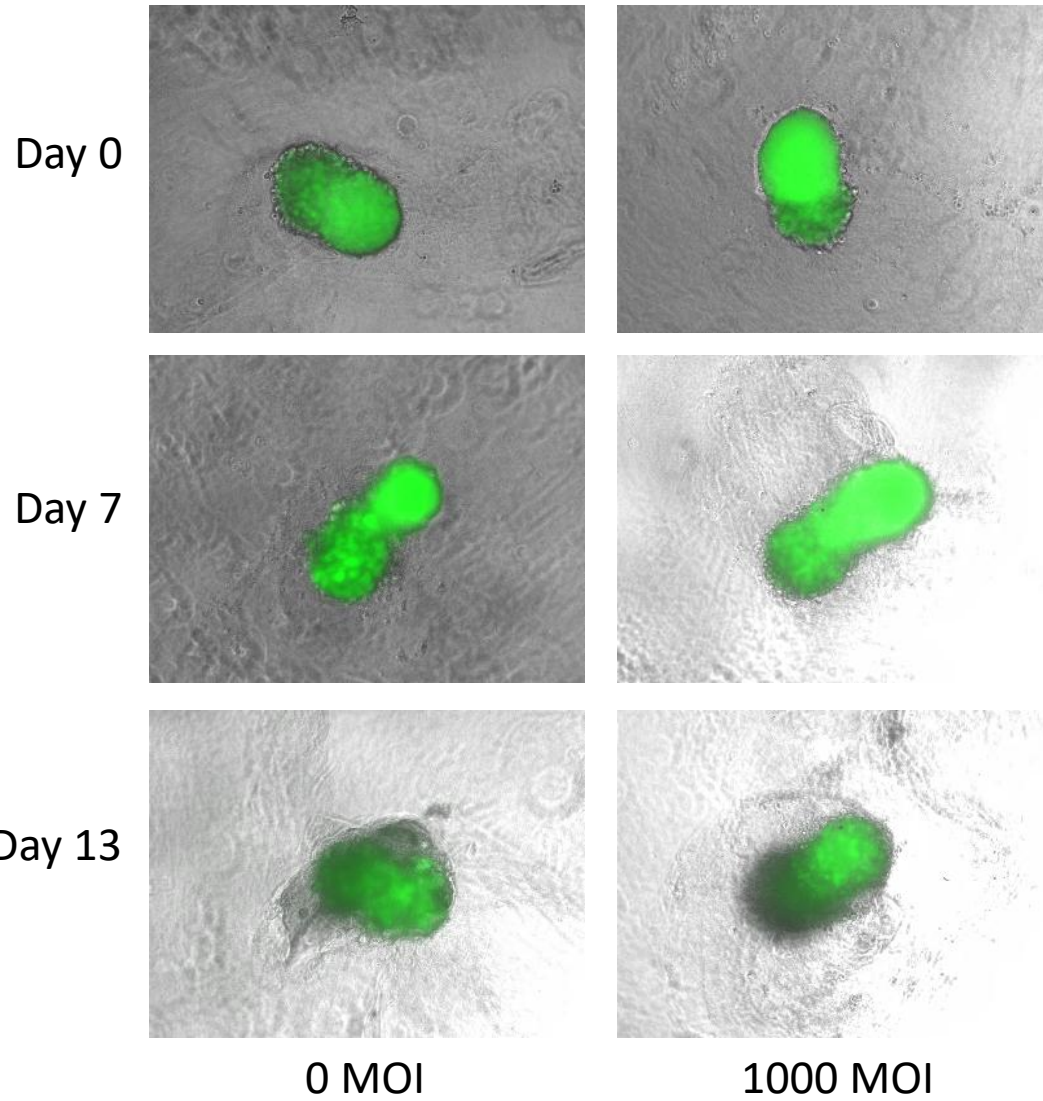
**D22 GLP T2**



D22 GLP cell lines spheroids were infected with CAV-AU-M3 at MOI 0 and 1000, and the spheroid shrinkage and cytopathic effects were visualized at Day 0, 7, and 13 post-infection by fluorescence microscopy (Keyence) at 10X magnification. This is a representation of three independent experiments.

**Figure S21.**

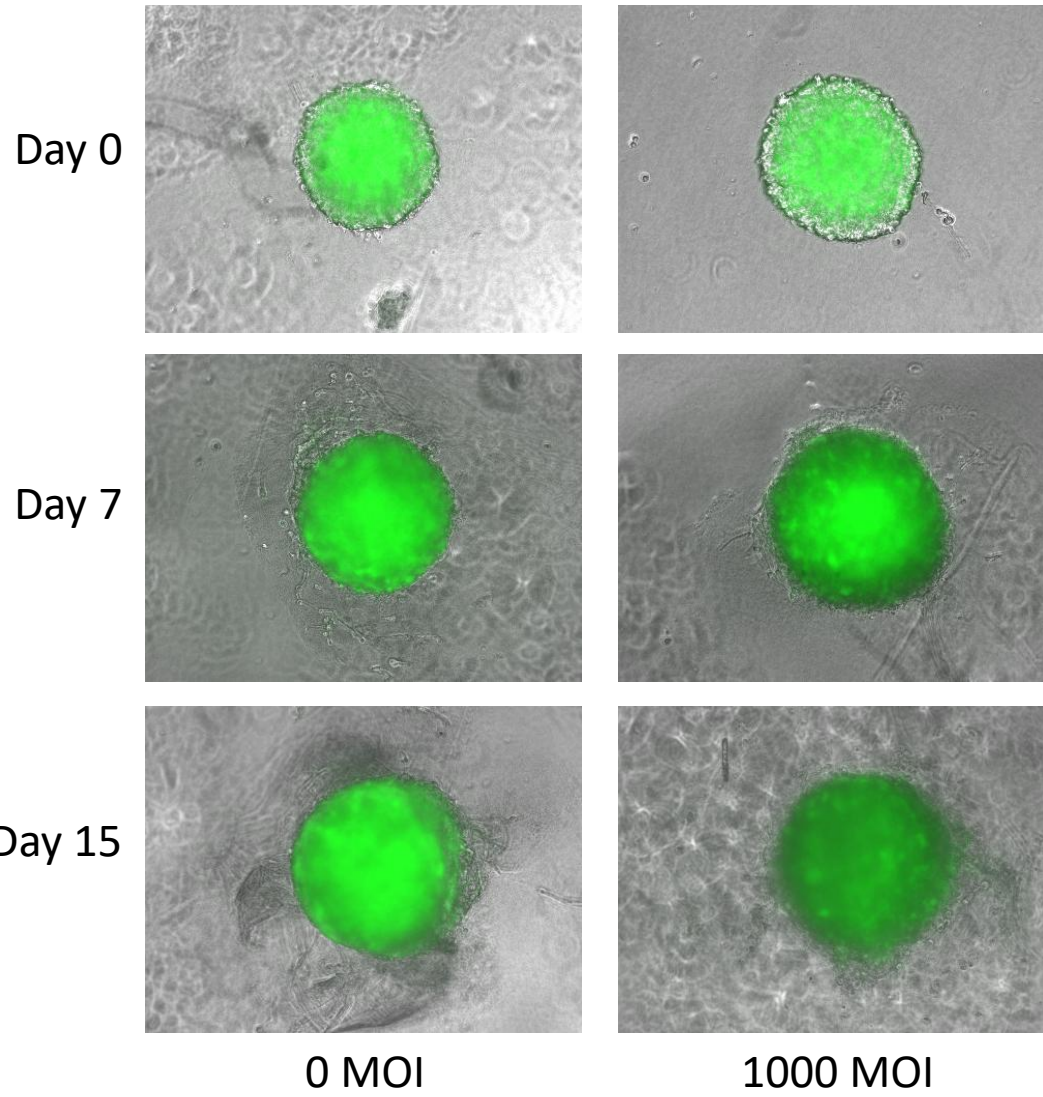
**D22 GLP T3**



D22 GLP cell lines spheroids were infected with CAV-AU-M3 at MOI 0 and 1000, and the spheroid shrinkage and cytopathic effects were visualized at Day 0, 7, and 13 post-infection by fluorescence microscopy (Keyence) at 10X magnification. This is a representation of three independent experiments.

**Figure S22.**

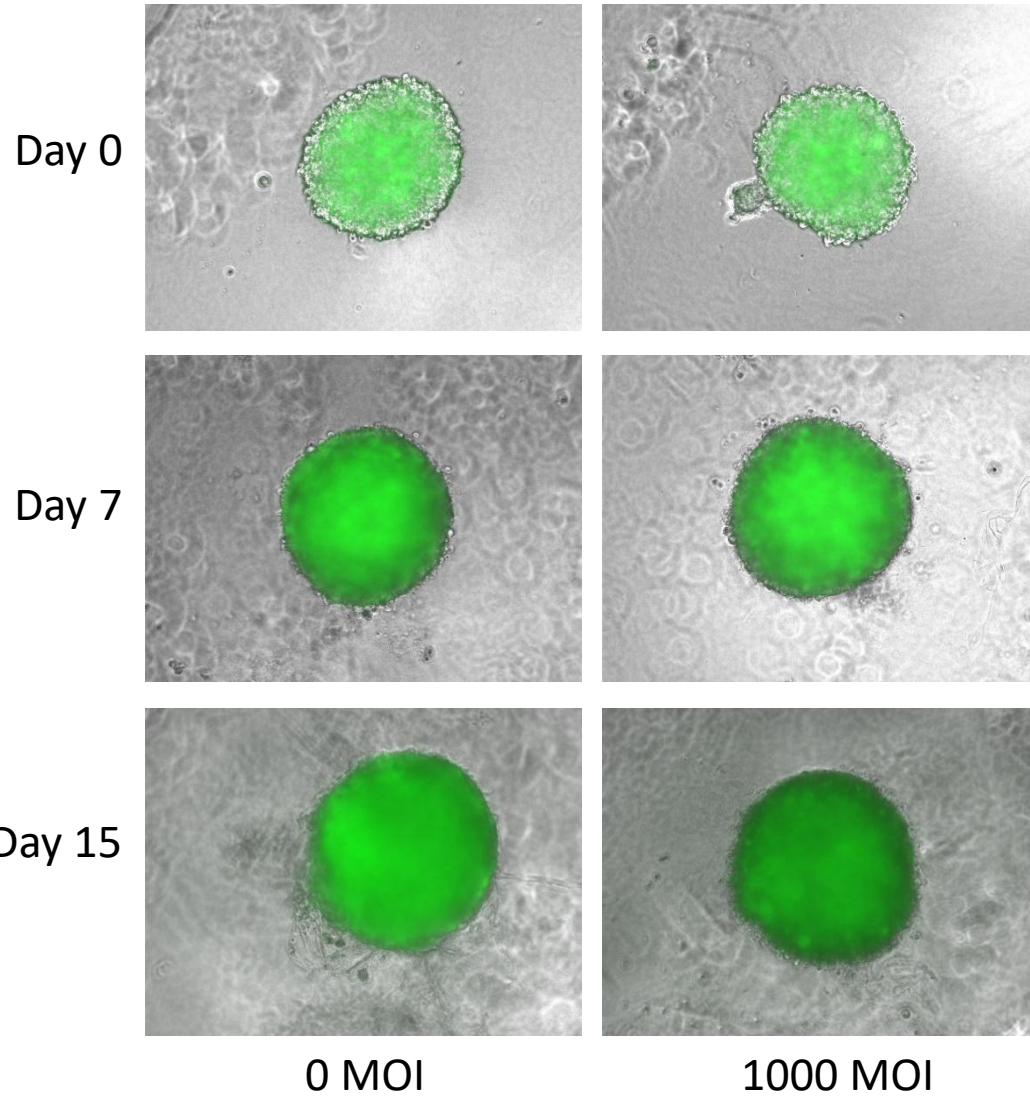
**MCKOS T1**



MCKOS cell lines spheroids were infected with CAV-AU-M3 at MOI 0 and 1000, and the spheroid shrinkage and cytopathic effects were visualized at Day 0, 7, and 13 post-infection by fluorescence microscopy (Keyence) at 10X magnification. This is a representation of three independent experiments.

**Figure S23.**

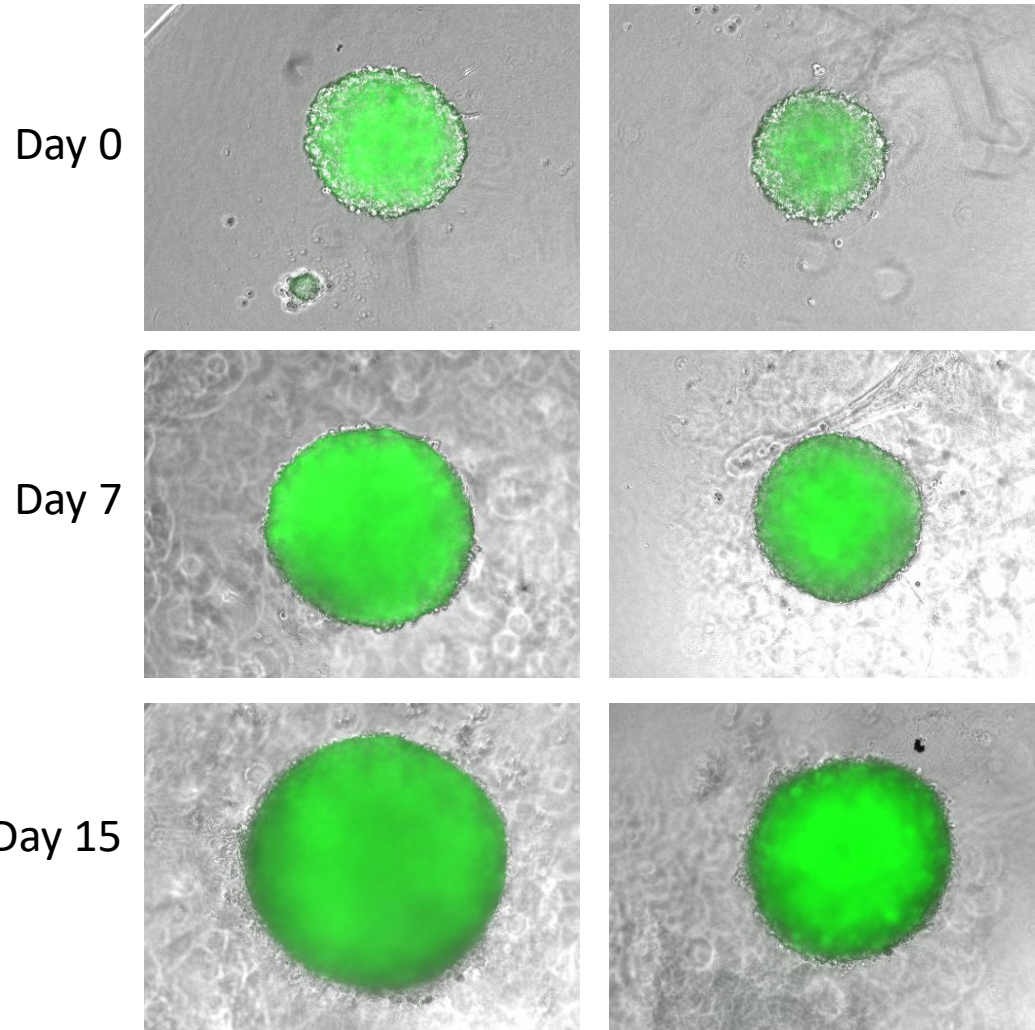
**MCKOS T2**



MCKOS cell lines spheroids were infected with CAV-AU-M3 at MOI 0 and 1000, and the spheroid shrinkage and cytopathic effects were visualized at Day 0, 7, and 13 post-infection by fluorescence microscopy (Keyence) at 10X magnification. This is a representation of three independent experiments.

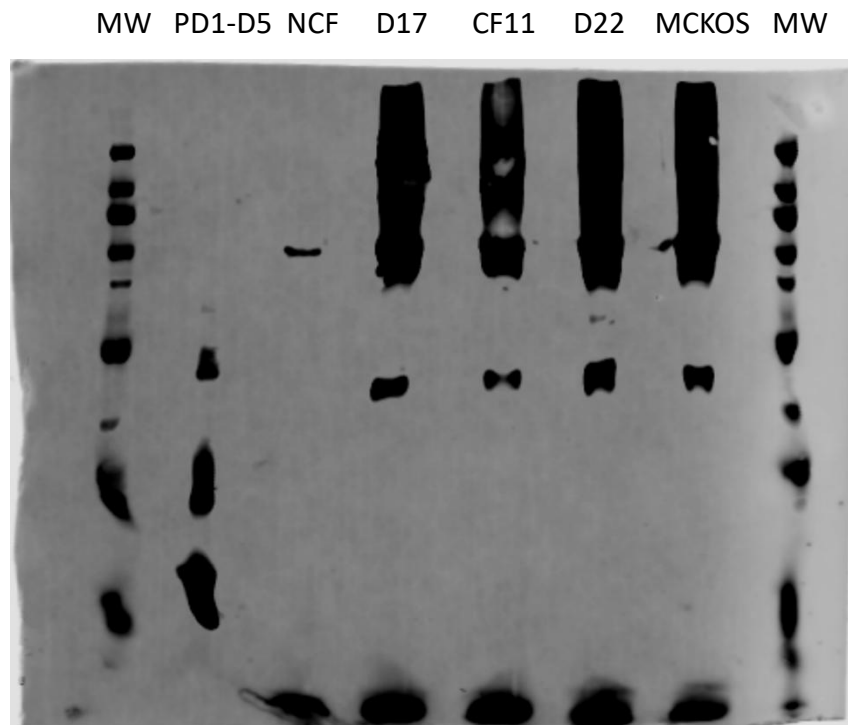
**Figure S23.**

**MCKOS T3**

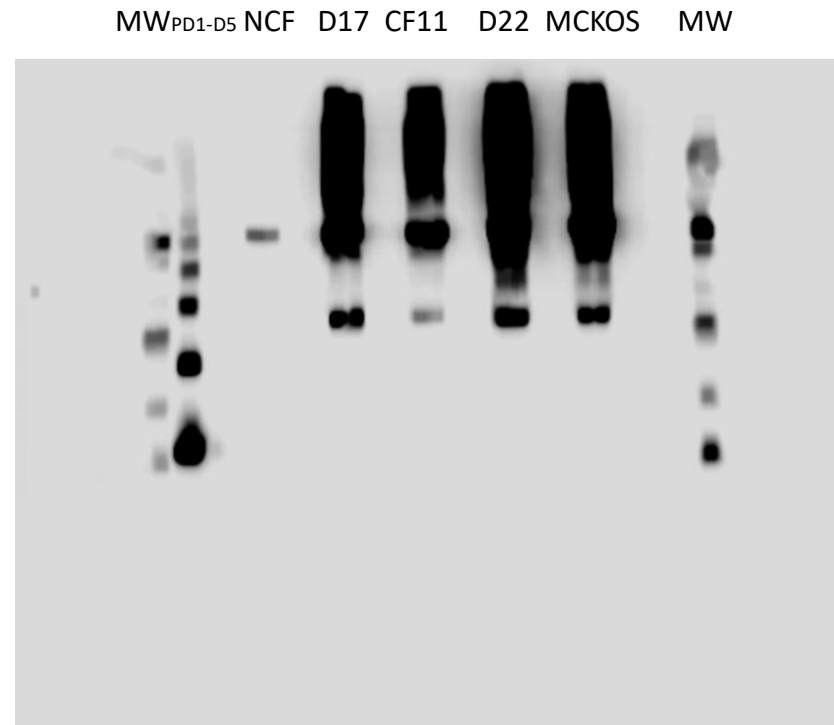


MCKOS cell lines spheroids were infected with CAV-AU-M3 at MOI 0 and 1000, and the spheroid shrinkage and cytopathic effects were visualized at Day 0, 7, and 13 post-infection by fluorescence microscopy (Keyence) at 10X magnification. This is a representation of three independent experiments.

**Figure S24.**



Western blot analysis: anti-PD1 HcAb was isolated from D17 GLP, CF11 GLL, D22 GLP, and MCKOS cell lines. Primary antibody: Mouse Anti-His, secondary antibody: anti mouse IgG



Western blot analysis: anti-PD1 HcAb was isolated from D17 GLP, CF11 GLL, D22 GLP, and MCKOS cell lines. Primary antibody: Mouse anti-VHH IFlour 647