

## Supplementary Figures

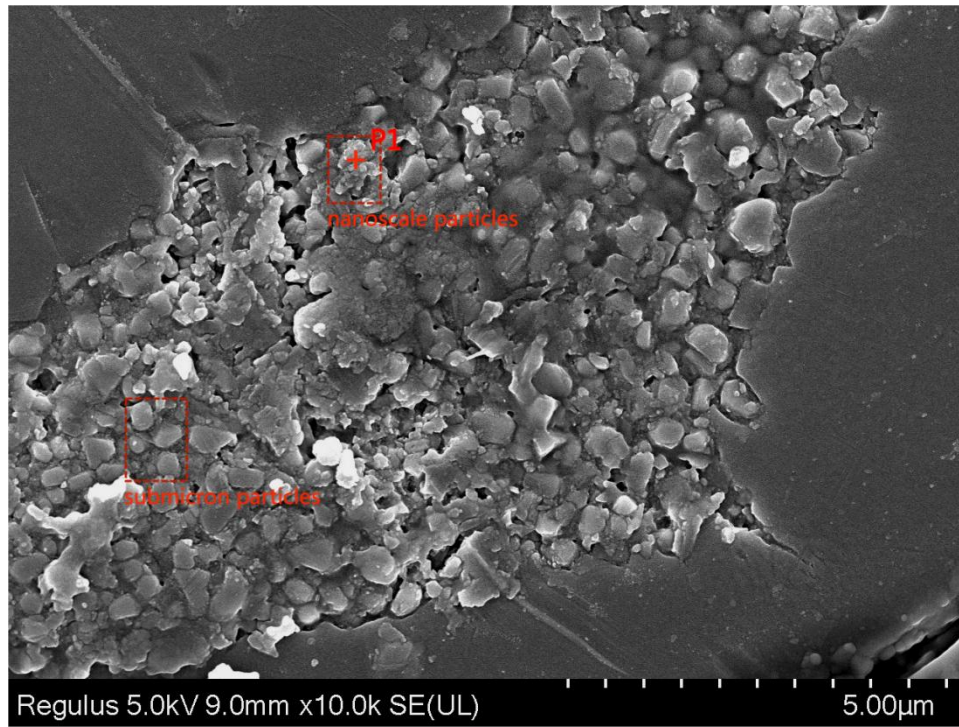


Figure S1. SEM image of the corrosion morphology on the surface of exposed submicron particles.

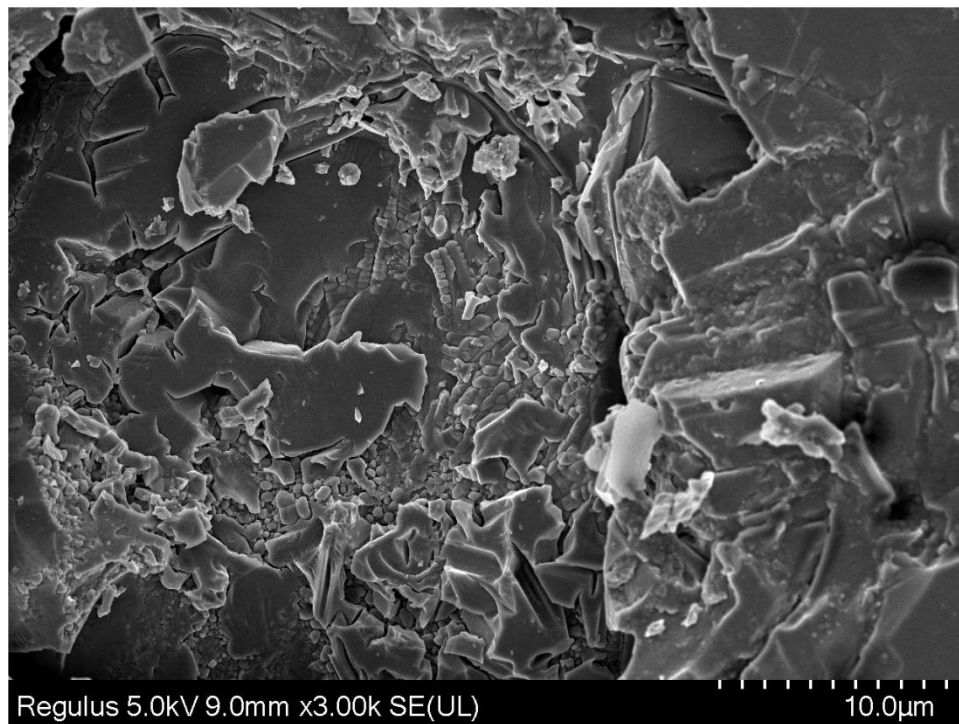


Figure S2. SEM image of the corrosion pit in Fig. 3b shows the well-aligned submicron particles partially covered by collapsed residual glaze.



Figure S3. SEM image of the localized corroded region on glaze surface shows the nanoscale particles with varying packing densities.

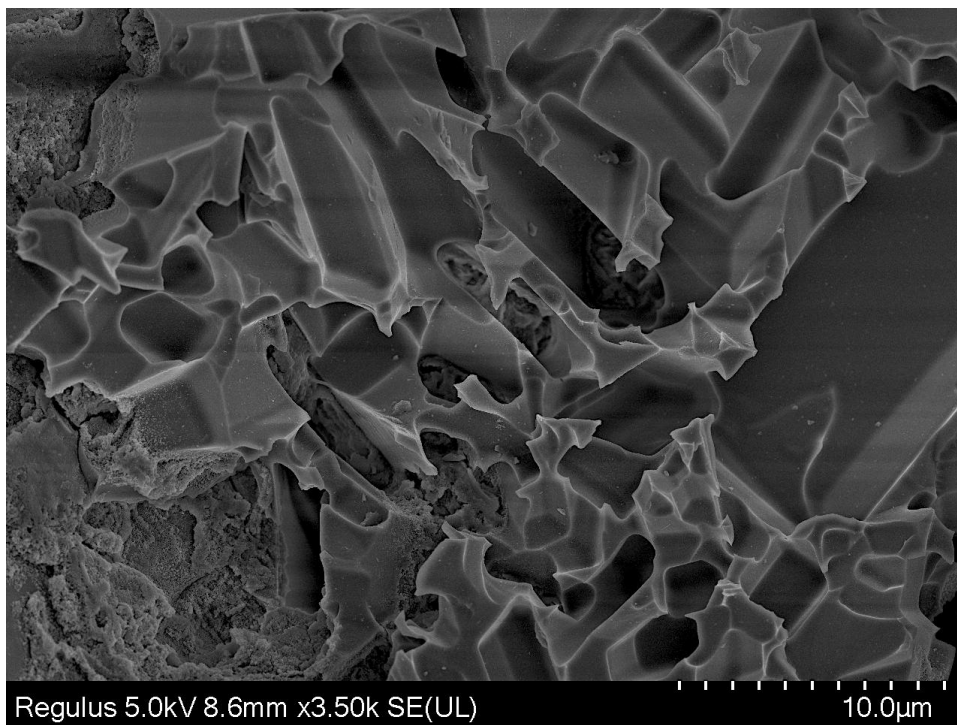


Figure S4. SEM image of the boxed area in Fig. 5e shows columnar pits.

## Supplementary Tables

Table S1. EDS results for the localized corroded region on glaze surface. (wt.%)

Position		wt %									
		C	O	Na	Mg	Al	Si	S	K	Ca	Fe
nanoscale particles	P1	/	51.0	/	/	0.6	46.6	/	0.2	0.2	1.3
nanoscale particles	P2	/	34.1	0.5	0.3	6.4	38.4	/	5.5	13.1	1.9