

Bodily Maps of Mental States Test (BMMST-32)

Erika Bucci¹, Giacomo Handjaras², Luca Cecchetti¹, Giada Lettieri³

1. Social and Affective Neuroscience (SANE) group, MoMiLab, IMT School for Advanced Studies Lucca, Lucca, Italy 2. Methods for Advanced Biosignal Analyses (MABA) group, MoMiLab, IMT School for Advanced Studies Lucca, Lucca, Italy 3. Affective Physiology and Interoception (API) group, MoMiLab, IMT School for Advanced Studies Lucca, Lucca, Italy

The present test assesses your ability to recognize mental states based on bodily sensations. Please read the following instructions carefully before proceeding.

You will be presented with a series of **32 human figures** colored along a scale from red to blue, with green representing intermediate values. These figures depict *Bodily Sensation Maps* (BSMs) associated with different mental states. Each BSM represents the typical pattern of bodily activity reported by individuals when experiencing a specific mental state.

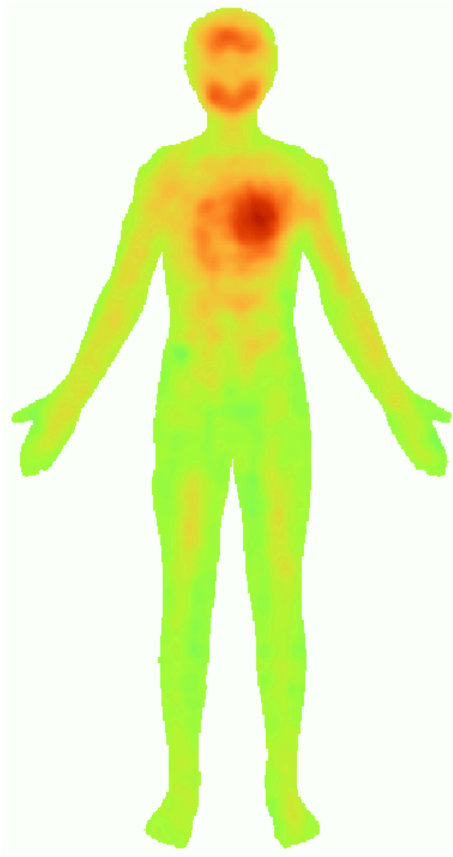
- **Red** regions indicate areas in which individuals generally report an **increase** in bodily activity when experiencing the corresponding mental state.
- **Blue** regions indicate areas in which individuals generally report a **decrease** in bodily activity.
- **Green** regions indicate areas in which individuals report **no significant change** in activity.

Your task is **to select the mental state** that best corresponds to each bodily map.

For each map, choose one option from the five available.

An example of the task is provided below.

Which mental state does this bodily map depict?



activation



decrease no change increase

~~1) Option 1~~

2) Option 2

3) Option 3

4) Option 4

5) Option 5

Note for test administration: Items in this version are presented in alphabetical order for reference purposes only. When administering the BMMST, please randomize the order of presentation to avoid potential order effects. A response sheet is provided separately (BMMST_response_sheet.xlsx).

01. Which mental state does this bodily map depict?

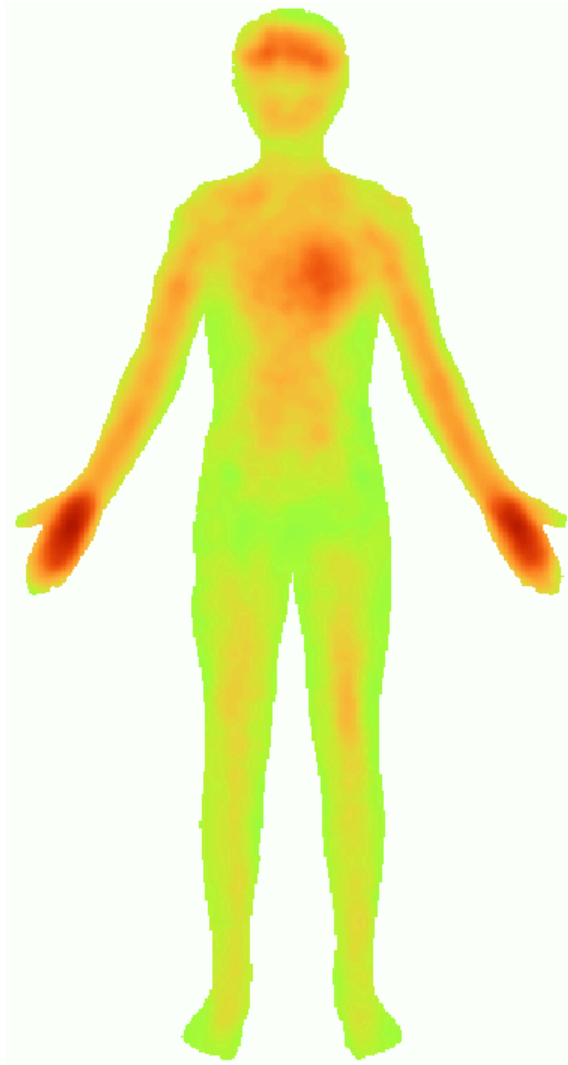


- 1) concern
- 2) nostalgia
- 3) affection
- 4) amusement
- 5) hate

activation



02. Which mental state does this bodily map depict?

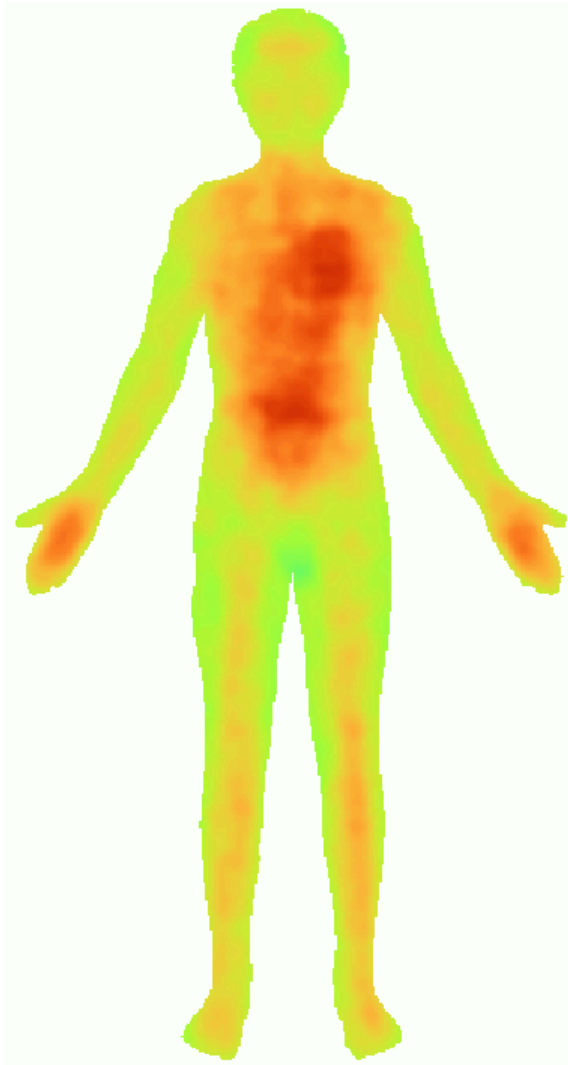


- 1) shame
- 2) terror
- 3) love
- 4) fury
- 5) aggressiveness

activation



03. Which mental state does this bodily map depict?

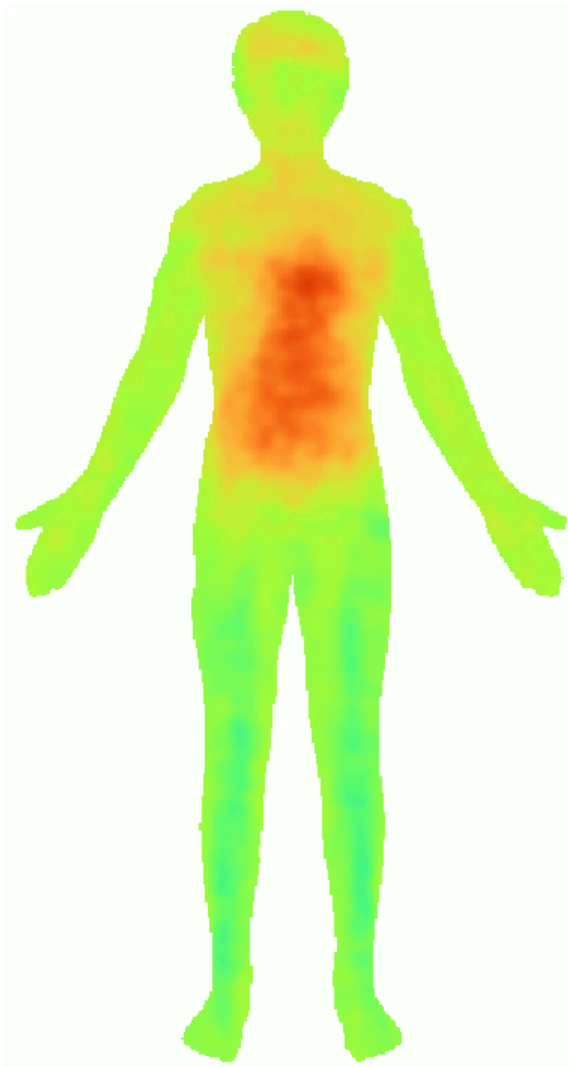


- 1) astonishment
- 2) anxiety
- 3) aggressiveness
- 4) agitation
- 5) chastity

activation



04. Which mental state does this bodily map depict?

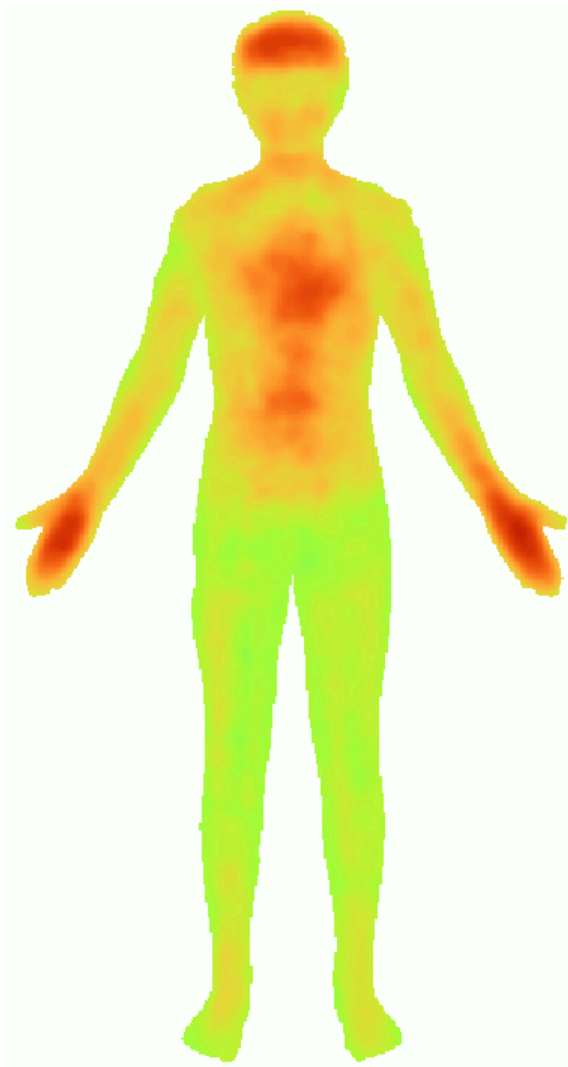


- 1) affection
- 2) happiness
- 3) agony
- 4) astonishment
- 5) cruelty

activation



05. Which mental state does this bodily map depict?

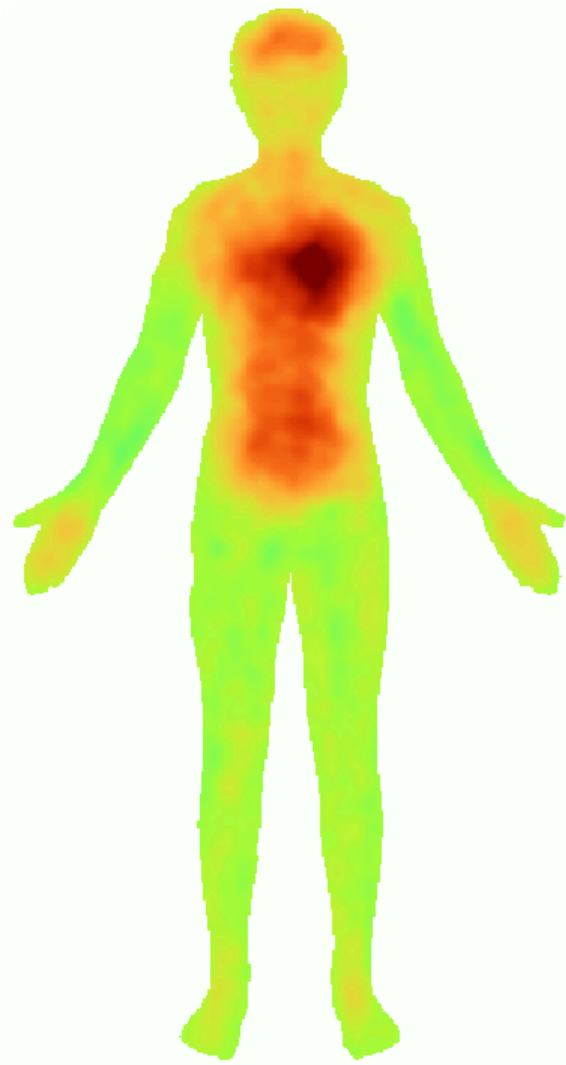


- 1) nervousness
- 2) contempt
- 3) gratitude
- 4) anger
- 5) uncertainty

activation



06. Which mental state does this bodily map depict?

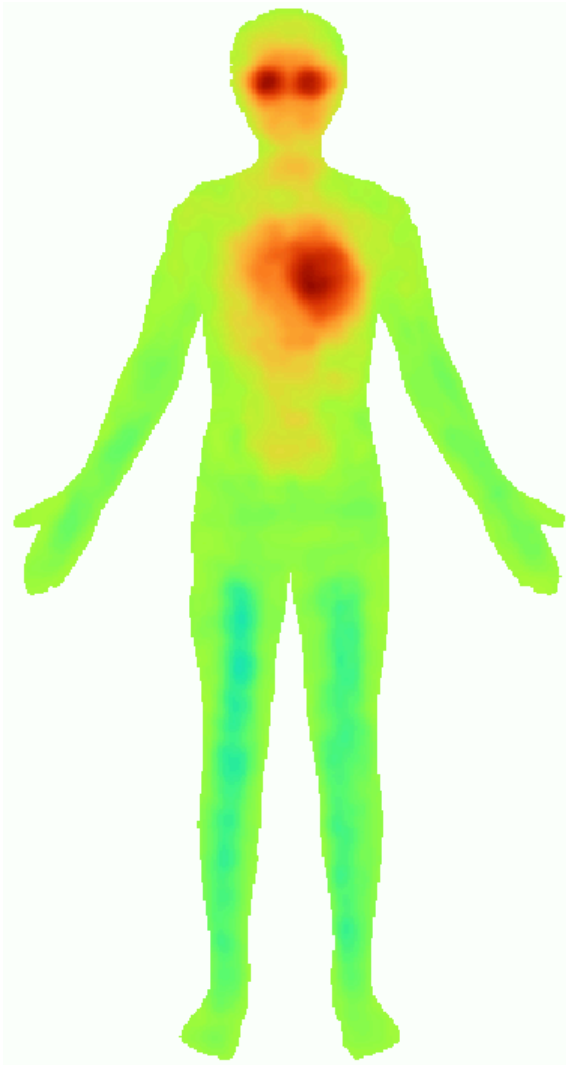


- 1) impatience
- 2) anxiety
- 3) nervousness
- 4) breathlessness
- 5) affection

activation



07. Which mental state does this bodily map depict?

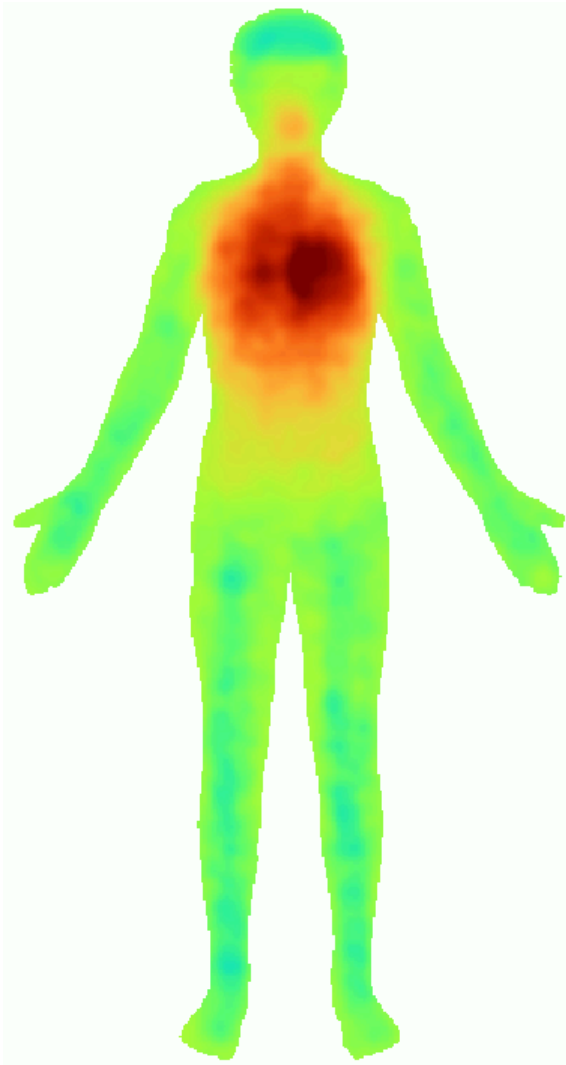


activation



- 1) being touched
- 2) humiliation
- 3) breathlessness
- 4) disappointment
- 5) sleepiness

08. Which mental state does this bodily map depict?



- 1) confusion
- 2) love
- 3) agitation
- 4) trust
- 5) breathlessness

activation

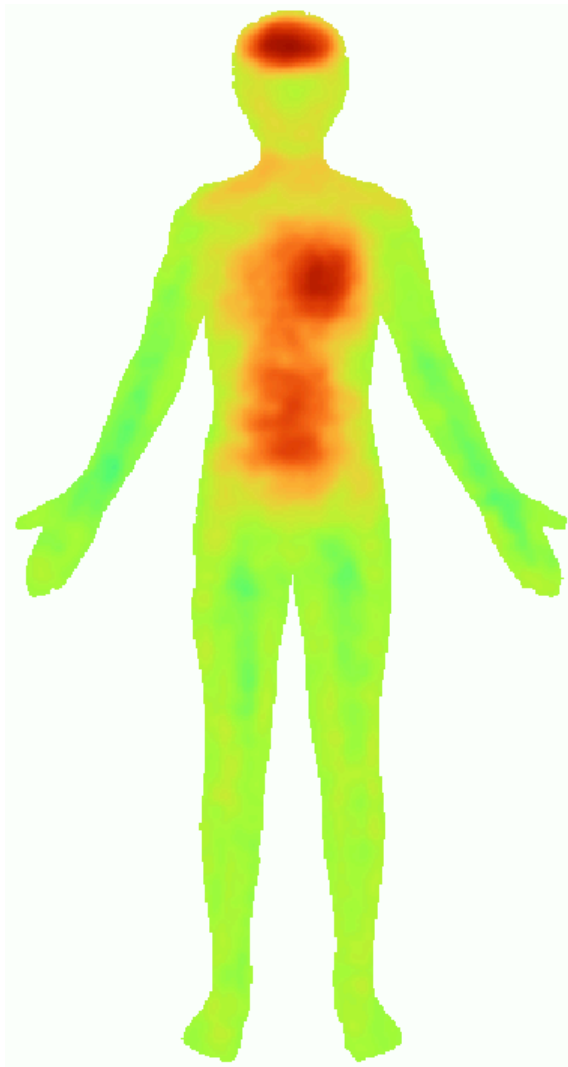


decrease

no change

increase

09. Which mental state does this bodily map depict?

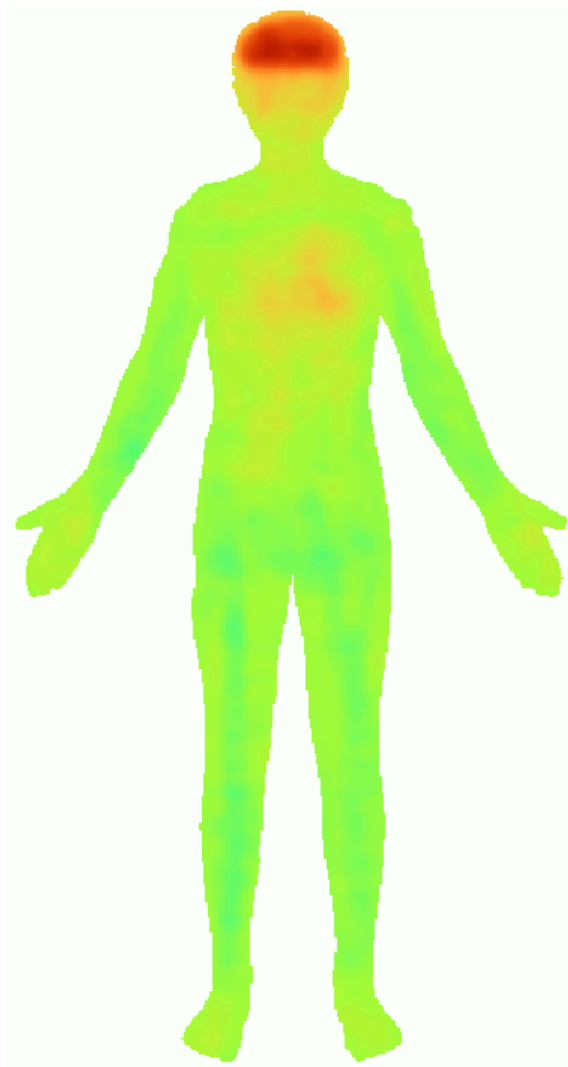


- 1) joy
- 2) ecstasy
- 3) concern
- 4) disgust
- 5) nervousness

activation



10. Which mental state does this bodily map depict?

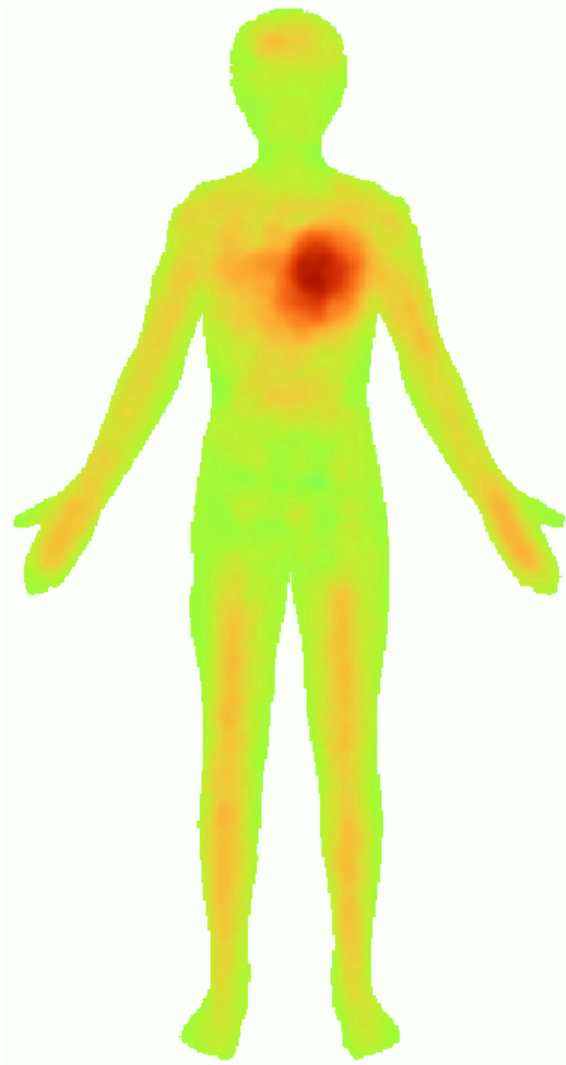


- 1) confusion
- 2) dissatisfaction
- 3) agitation
- 4) breathlessness
- 5) fear

activation



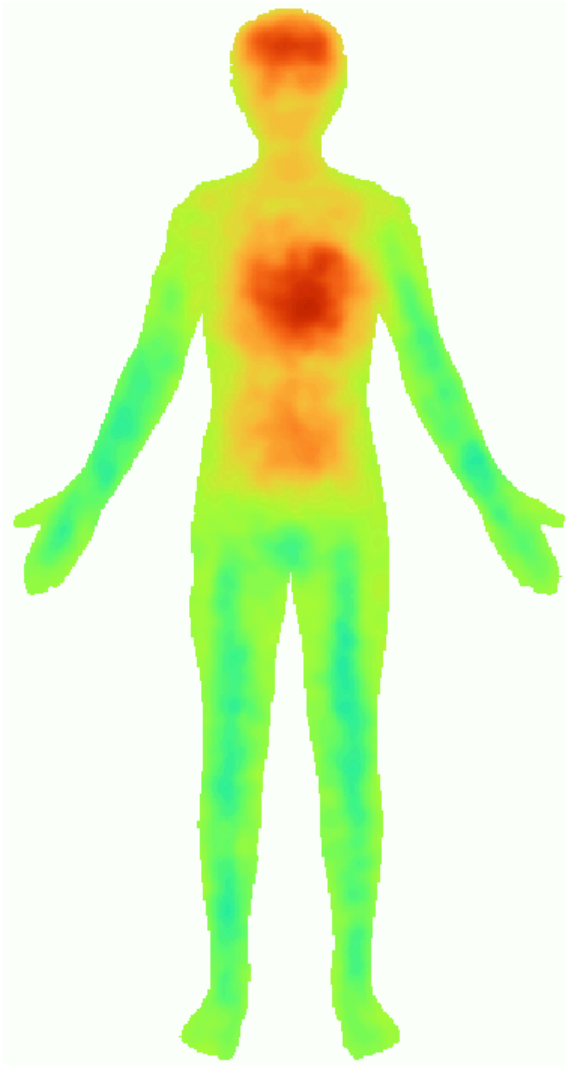
11. Which mental state does this bodily map depict?



- 1) joy
- 2) courage
- 3) affection
- 4) ecstasy
- 5) terror



12. Which mental state does this bodily map depict?

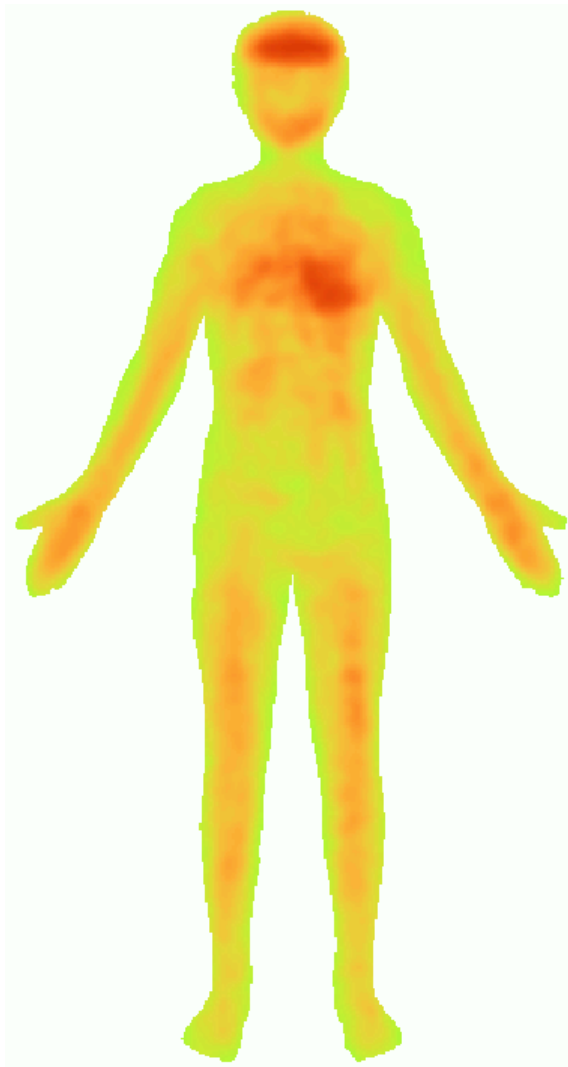


- 1) pride
- 2) sexual pleasure
- 3) affection
- 4) despair
- 5) stress

activation



13. Which mental state does this bodily map depict?

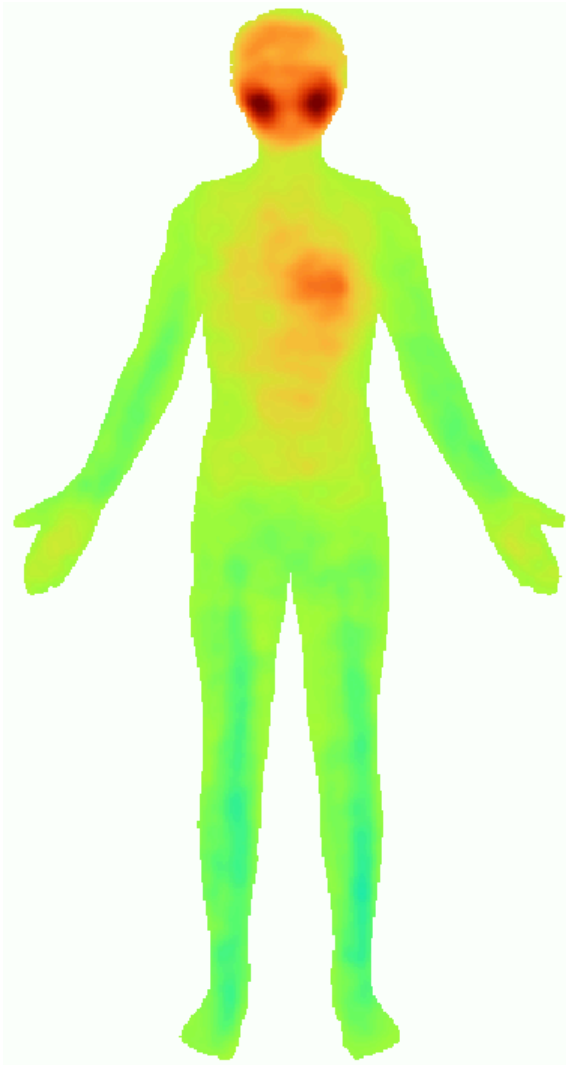


- 1) love
- 2) disgust
- 3) amusement
- 4) stress
- 5) elation

activation



14. Which mental state does this bodily map depict?

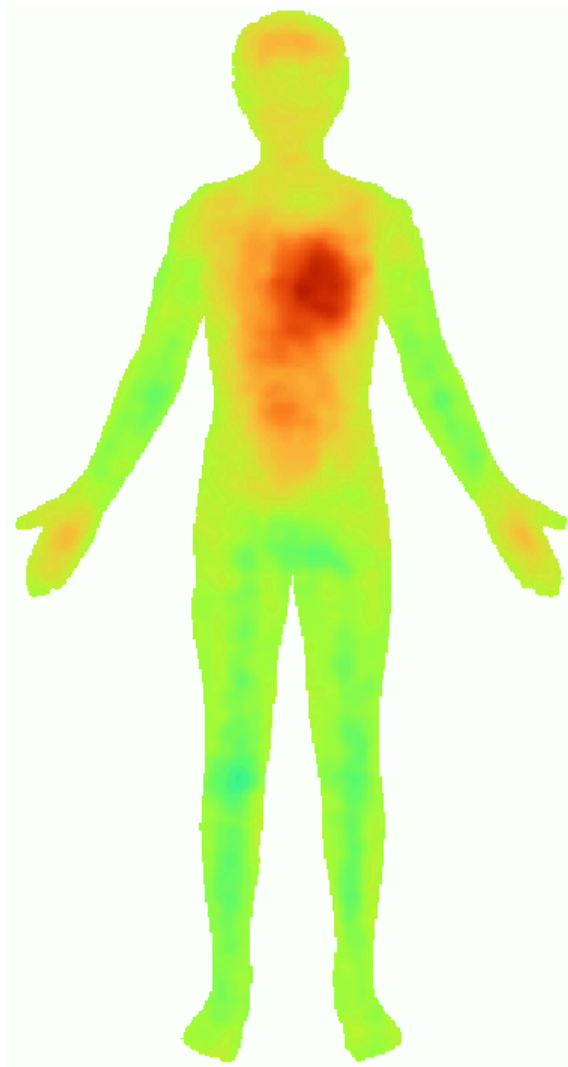


activation



- 1) skepticism
- 2) fury
- 3) embarrassment
- 4) affection
- 5) ecstasy

15. Which mental state does this bodily map depict?

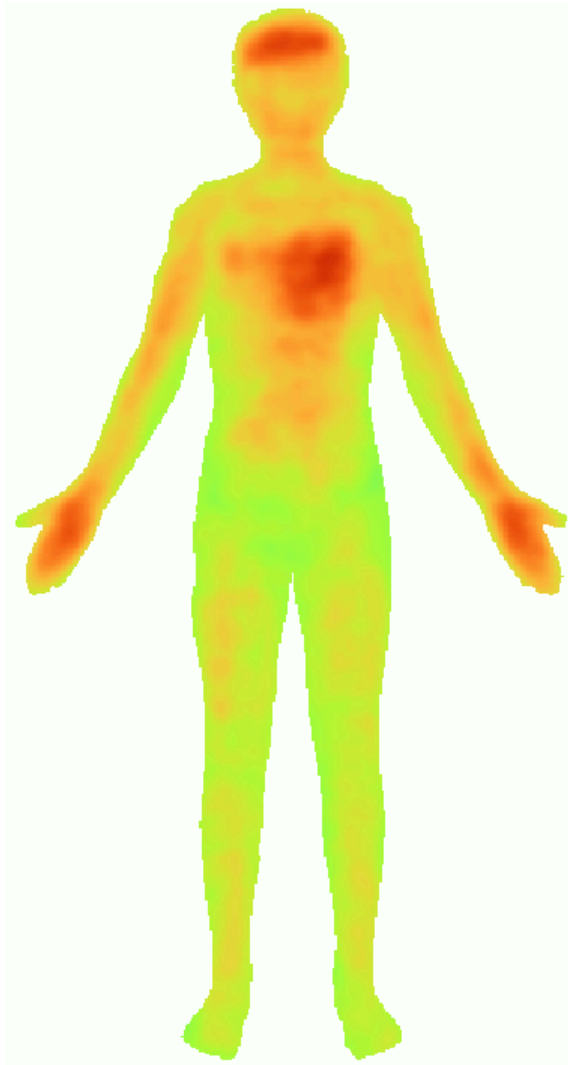


- 1) contempt
- 2) being touched
- 3) panic
- 4) breathlessness
- 5) fear

activation



16. Which mental state does this bodily map depict?

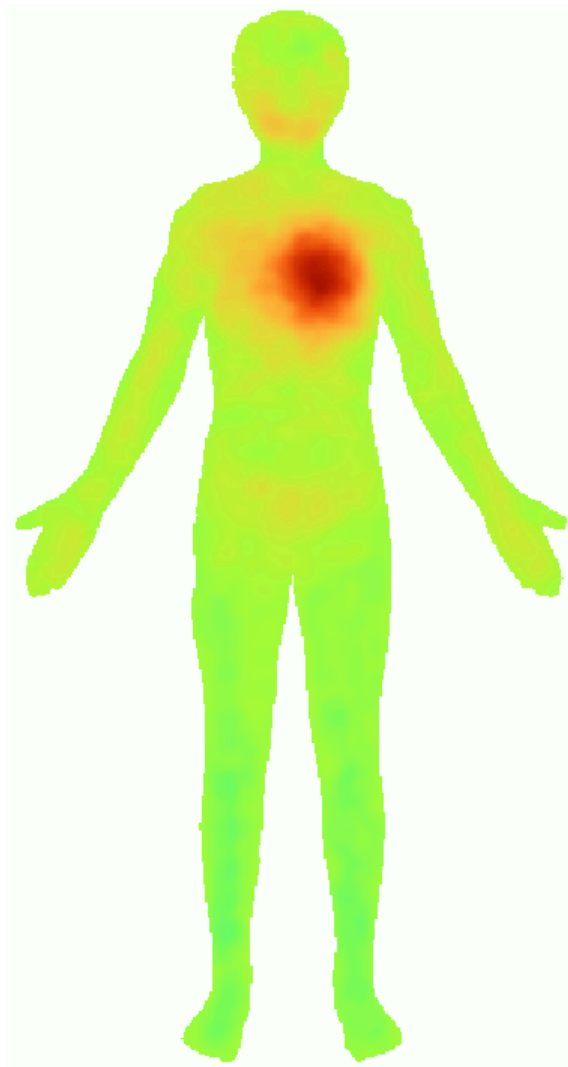


- 1) fury
- 2) egotism
- 3) fear
- 4) agitation
- 5) contempt

activation



17. Which mental state does this bodily map depict?

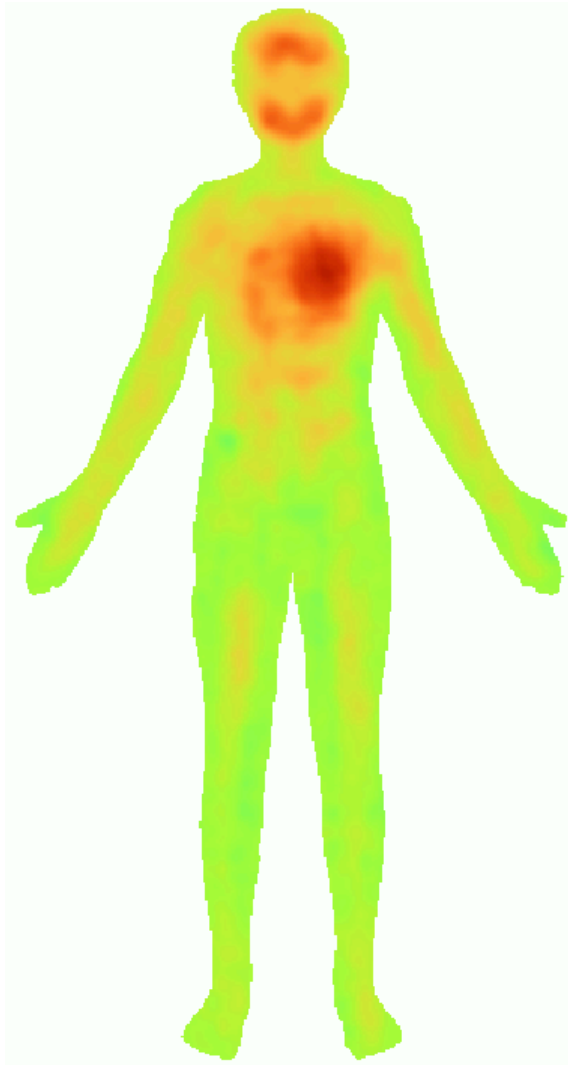


- 1) breathlessness
- 2) agitation
- 3) gratitude
- 4) happiness
- 5) compassion

activation



18. Which mental state does this bodily map depict?



- 1) happiness
- 2) elation
- 3) sexual pleasure
- 4) respect
- 5) agitation

activation

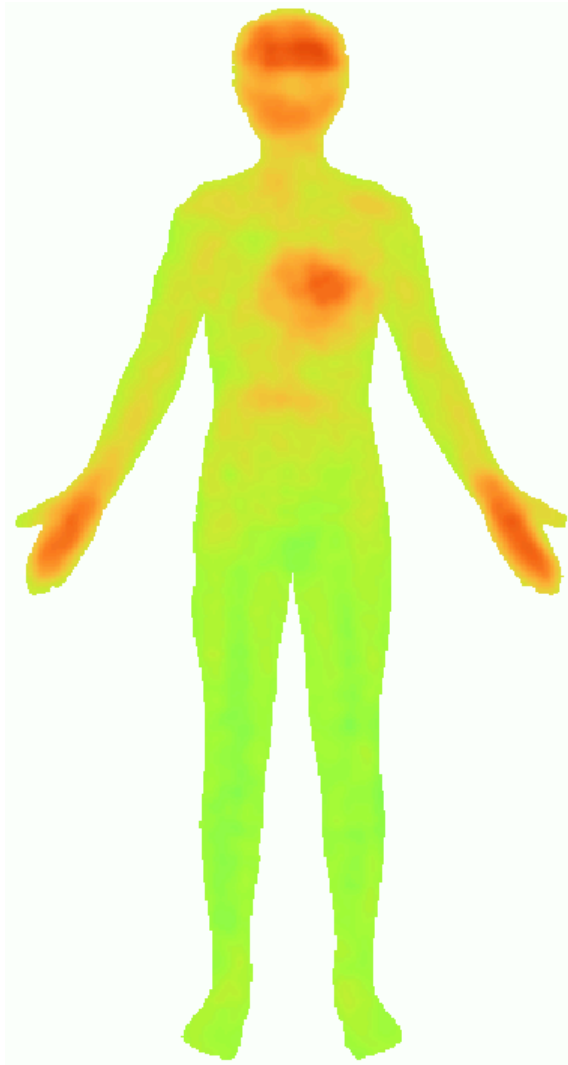


decrease

no change

increase

19. Which mental state does this bodily map depict?



- 1) envy
- 2) hate
- 3) aggressiveness
- 4) breathlessness
- 5) gratitude

activation



20. Which mental state does this bodily map depict?

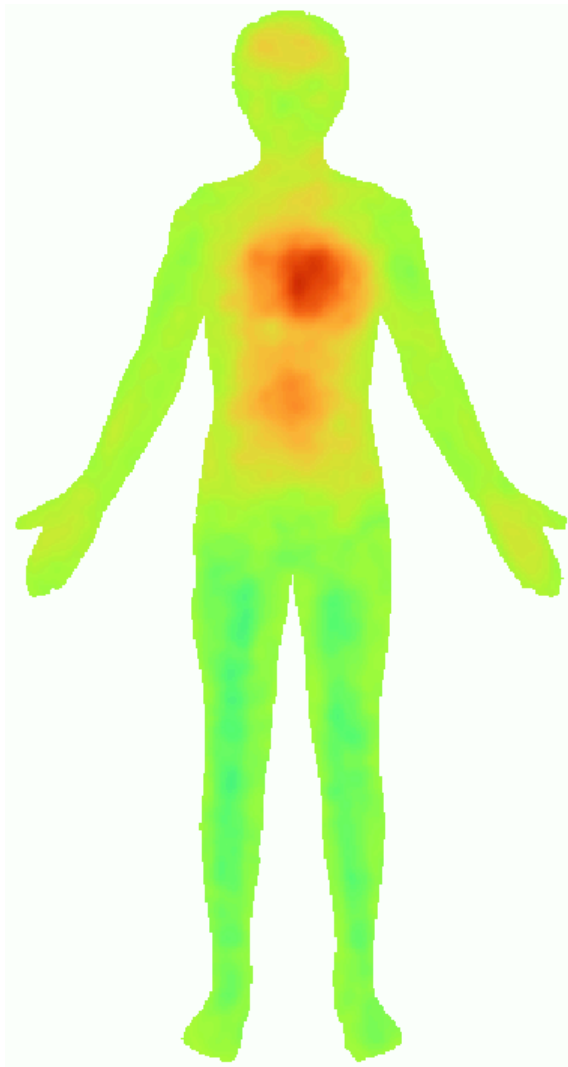


- 1) generosity
- 2) tiredness
- 3) impatience
- 4) jealousy
- 5) relief

activation



21. Which mental state does this bodily map depict?

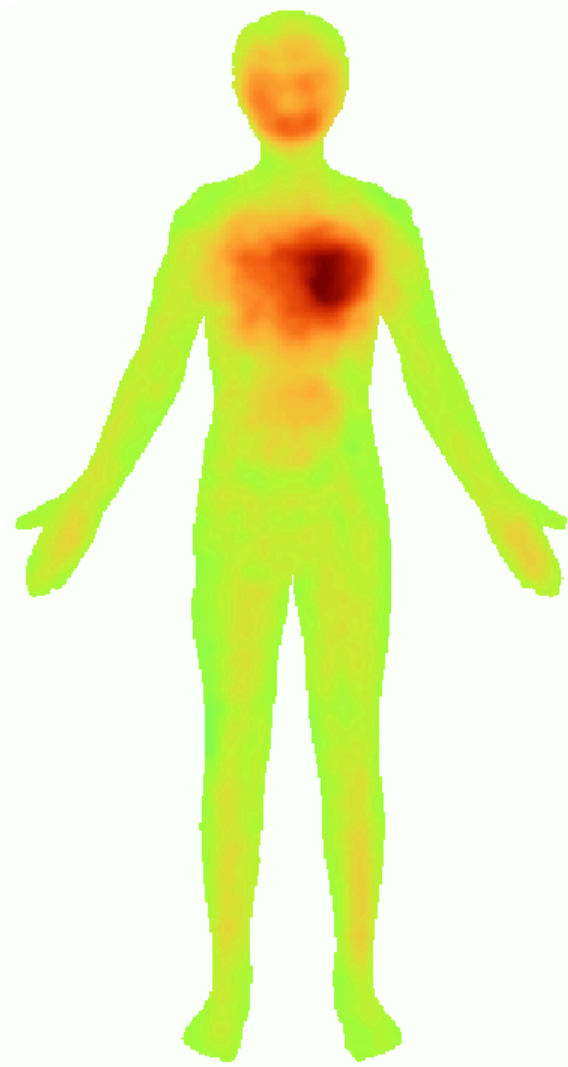


activation



- 1) being touched
- 2) happiness
- 3) jealousy
- 4) disgust
- 5) agitation

22. Which mental state does this bodily map depict?

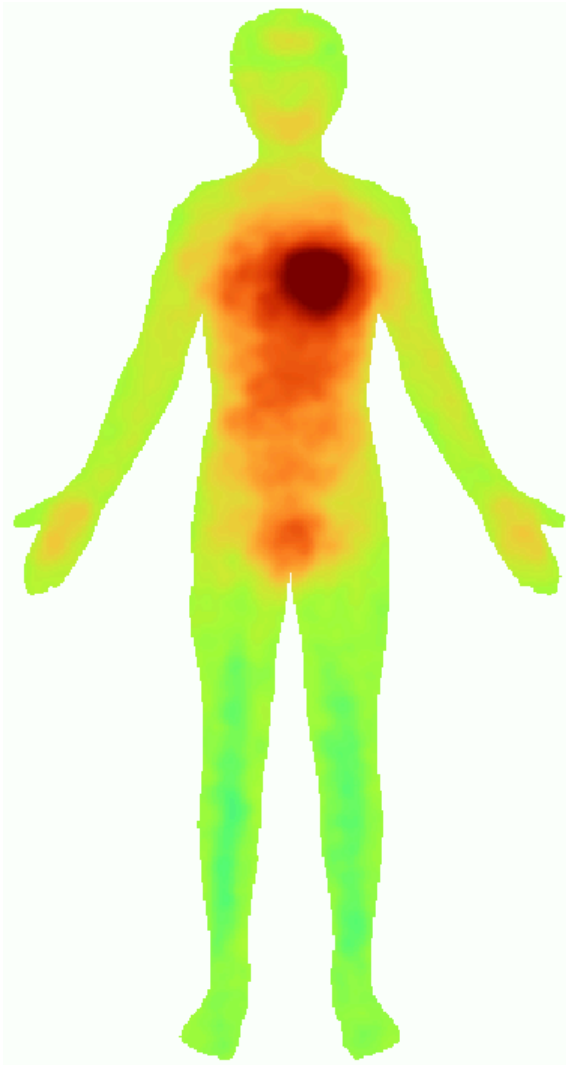


- 1) concern
- 2) lust
- 3) joy
- 4) love
- 5) elation

activation



23. Which mental state does this bodily map depict?



- 1) anxiety
- 2) love
- 3) confusion
- 4) amusement
- 5) surprise

activation

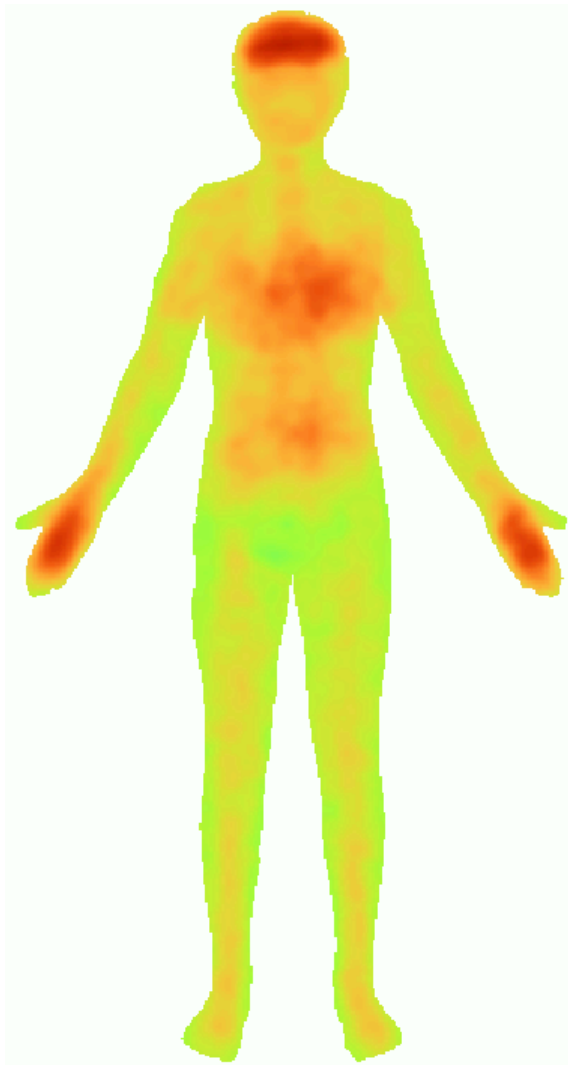


decrease

no change

increase

24. Which mental state does this bodily map depict?

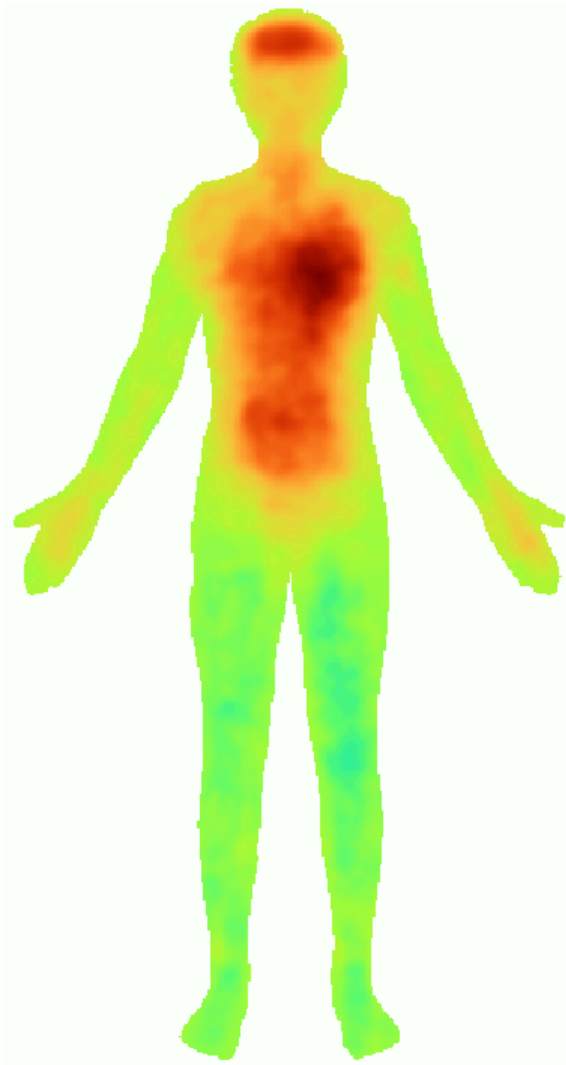


- 1) sexual pleasure
- 2) hate
- 3) nervousness
- 4) breathlessness
- 5) anger

activation



25. Which mental state does this bodily map depict?



activation



- 1) concern
- 2) fury
- 3) panic
- 4) being touched
- 5) affection

26. Which mental state does this bodily map depict?

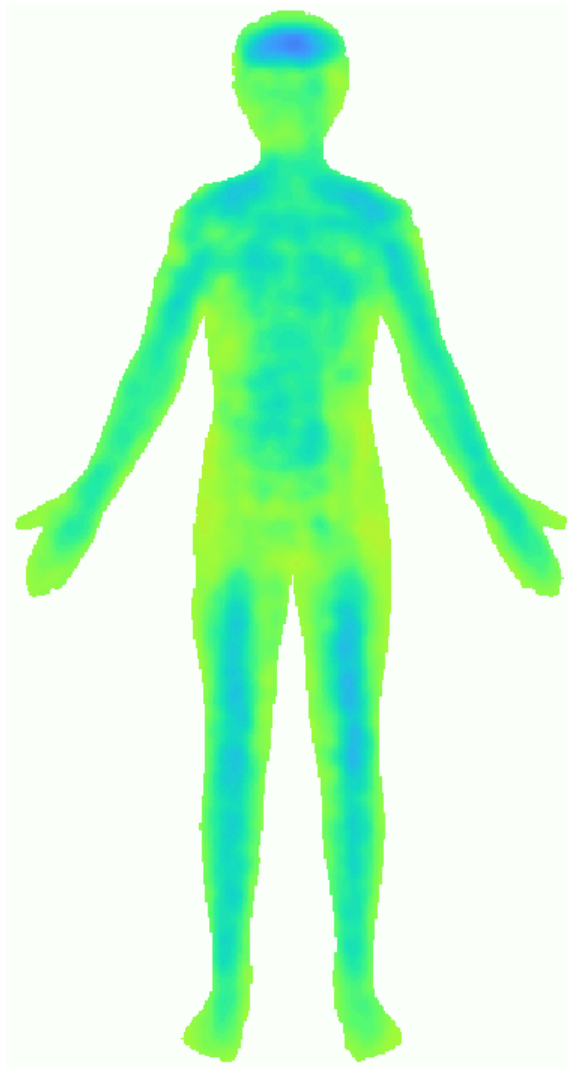


- 1) egotism
- 2) happiness
- 3) pride
- 4) confusion
- 5) concern

activation



27. Which mental state does this bodily map depict?

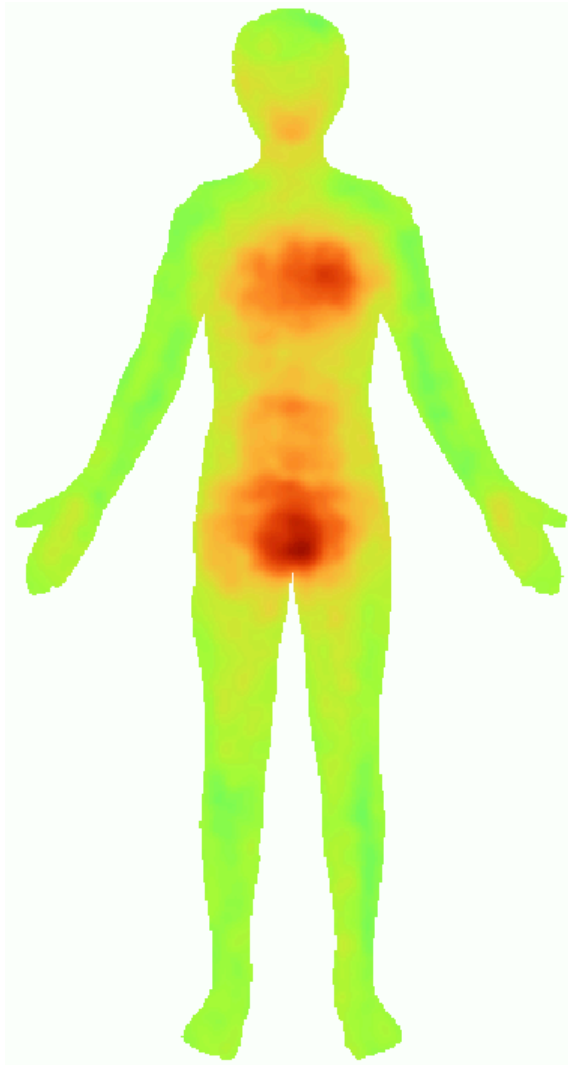


activation



- 1) carelessness
- 2) relaxation
- 3) anger
- 4) confusion
- 5) ecstasy

28. Which mental state does this bodily map depict?

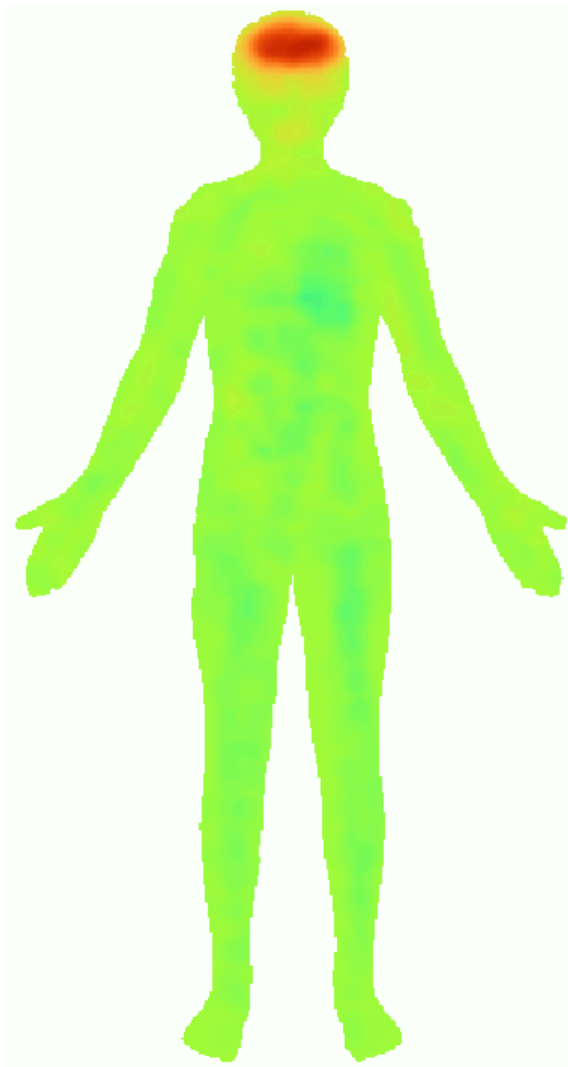


activation



- 1) chastity
- 2) terror
- 3) ecstasy
- 4) amusement
- 5) sexual pleasure

29. Which mental state does this bodily map depict?

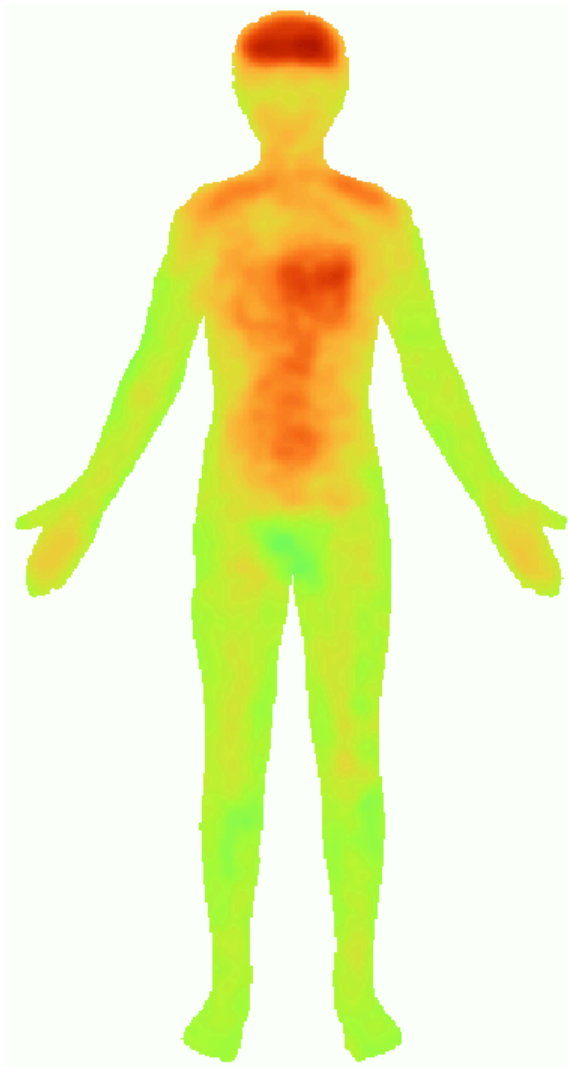


activation



- 1) despair
- 2) skepticism
- 3) amusement
- 4) breathlessness
- 5) uncertainty

30. Which mental state does this bodily map depict?

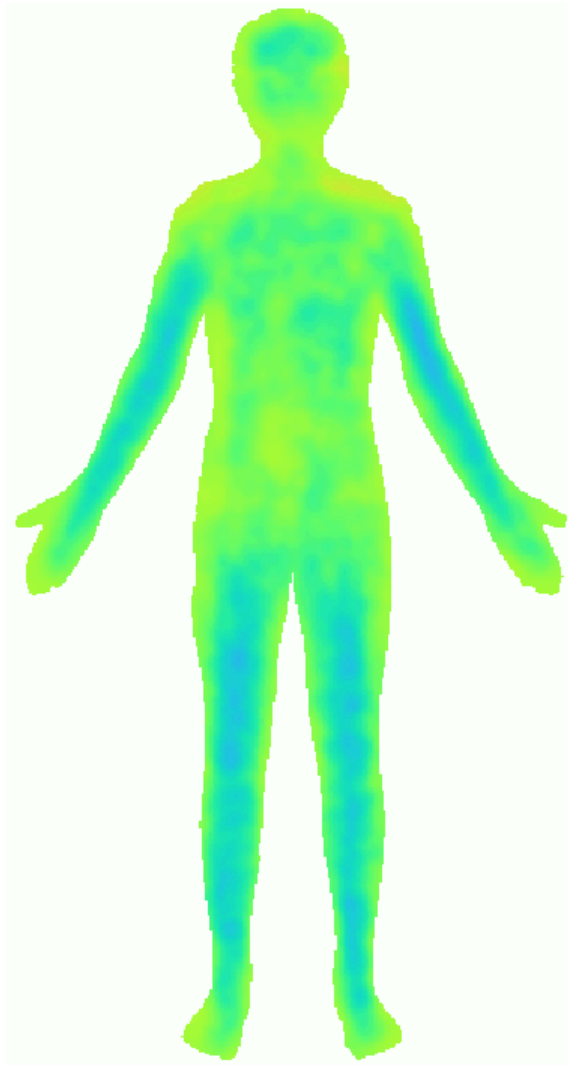


- 1) envy
- 2) stress
- 3) contempt
- 4) elation
- 5) disgust

activation



31. Which mental state does this bodily map depict?

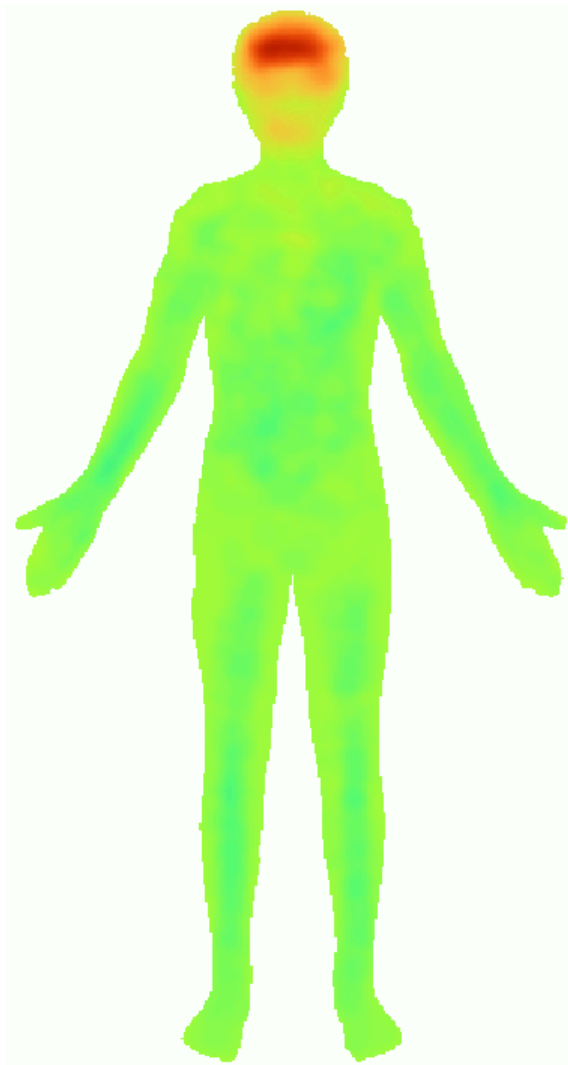


- 1) relief
- 2) sexual pleasure
- 3) anxiety
- 4) tiredness
- 5) love

activation



32. Which mental state does this bodily map depict?



activation



- 1) despair
- 2) carelessness
- 3) uncertainty
- 4) being touched
- 5) stress
