

Supplemental Information

Early-Life Stress Drives Anxiety and Irritable Bowel Syndrome-Like Gastrointestinal Dysfunction via Microglial Activation and Gut Microbiota Dysbiosis

Min Chen^{1#}, Yuzhou Xiao^{2#}, Can Yang³, Xiaodan Pan², Wenjing Xu², Yue Zhao²,
Xiaofeng Yang², Dongming Wu^{3*}, Ying Xu^{3*}, Liang Wang^{4*}

¹ School of Biosciences and Technology, Chengdu Medical College, Chengdu, 610500, Sichuan, China. Fax: 028-62739582

² Mental Health Center and National Chengdu Center for Safety Evaluation of Drugs, State Key Laboratory of Biotherapy, West China Hospital of Sichuan University, Chengdu 610041, China. Fax: 028-85367881

³ School of Clinical Medicine & The First Affiliated Hospital of Chengdu Medical College, Chengdu 610500, China. Fax: 028-83016721

⁴ Department of Neurosurgery, Xinqiao Hospital, Army Medical University, Chongqing 400037, China. Fax: 023-772314

These authors contributed equally to this work

* Corresponding author

E-mail & ORCID:

Min Chen, cmmm0929@yeah.net; 0009-0006-8025-9734

Yuzhou Xiao, microcosmos@foxmail.com; 0000-0001-8934-4448

Can Yang, 19102824669@163.com; 0009-0000-4024-0576

Xiaodan Pan, 15892422012@163.com; 0009-0003-7127-4316

Wenjing Xu, melissa1522@foxmail.com; 0009-0006-8025-9734

Yue Zhao, homefly@foxmail.com; 0000-0001-8676-4949

Xiaofeng Yang, yxf2023224065148@163.com; 0009-0008-6178-9080

Dongming Wu, dongmingwu@cmc.edu.cn; 0000-0002-5806-5646

Ying Xu, yingxu@cmc.edu.cn; 0000-0001-9570-8666

Liang Wang, liangwang@tmmu.edu.cn; 0000-0003-4988-2190

Supplementary Figure 1

Figure 2F

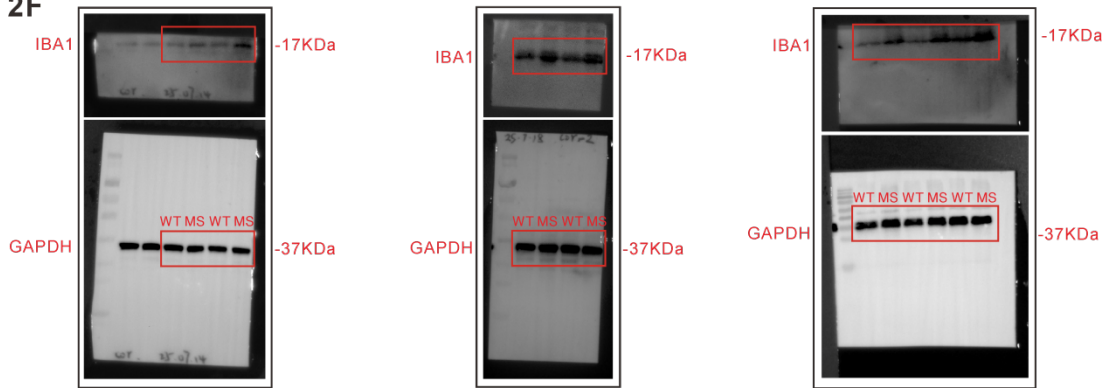


Figure 3M

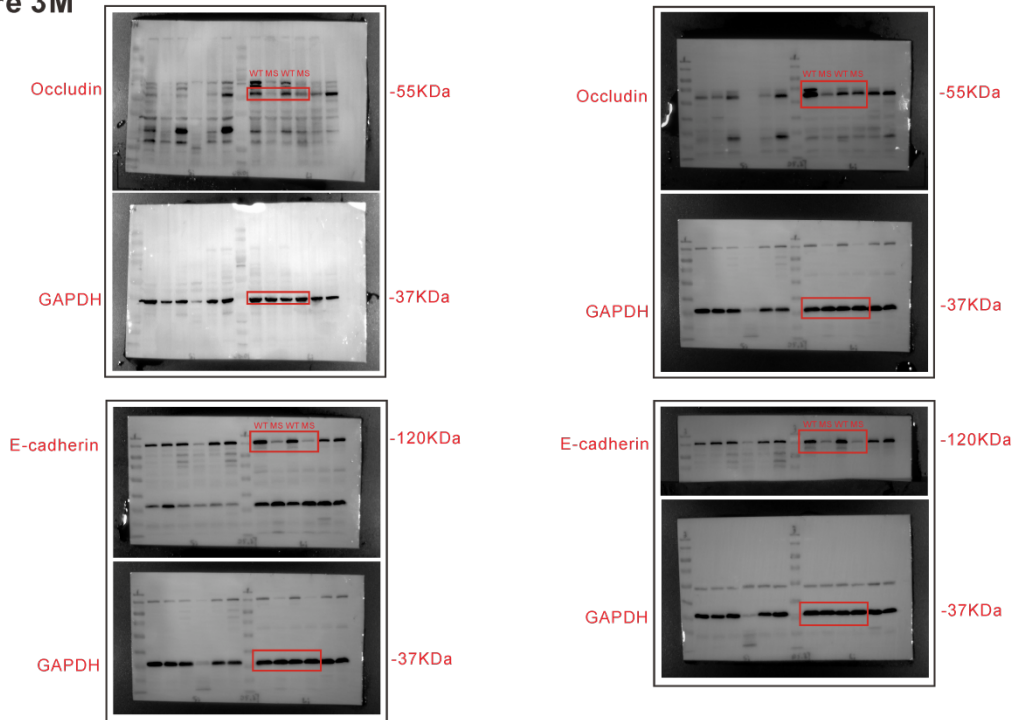
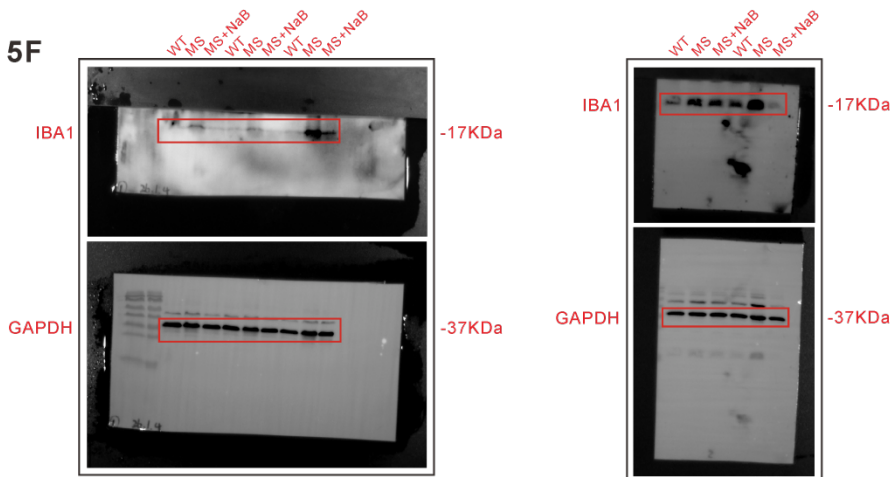
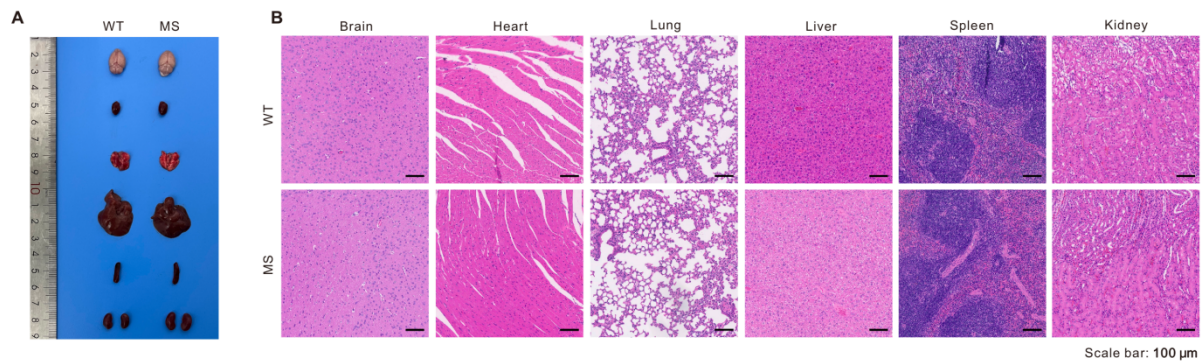


Figure 5F



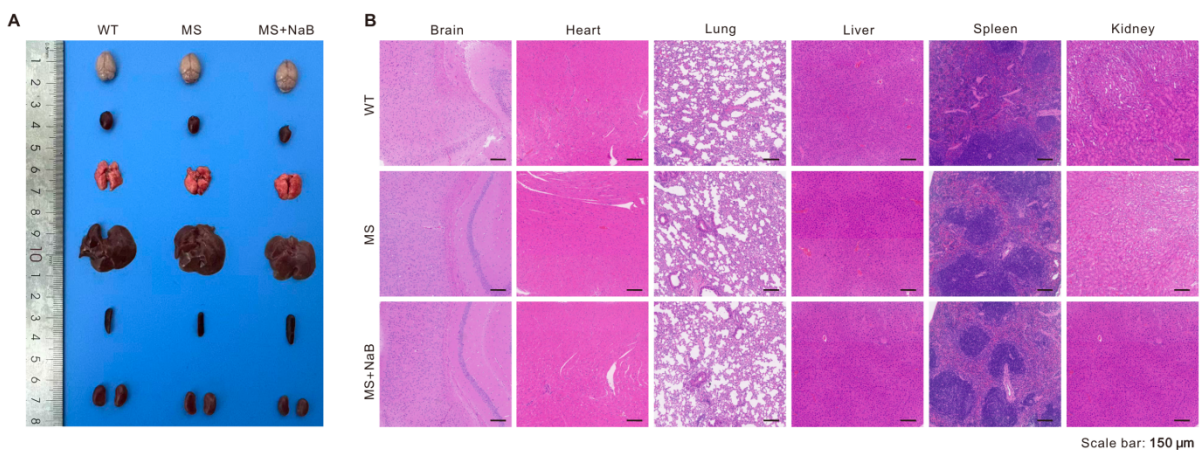
Supplementary Figure 1. Raw Western blot images of the indicated figures.

Supplementary Figure 2



Supplementary Figure 2. Maternal separation did not produce evident morphological abnormalities in major organs. (A) Representative photographs showing the gross morphology of different mouse tissues. (B) Representative H&E-stained micrographs displaying the tissue architecture and cellular morphology of multiple mouse tissues. Scale bars, 100 μm.

Supplementary Figure 3



Supplementary Figure 3. Oral administration of sodium butyrate showed no evident toxicity in major organs. (A) Representative photographs showing the gross morphology of different mouse tissues. (B) Representative H&E-stained micrographs displaying the tissue architecture and cellular morphology of multiple mouse tissues. Scale bars, 150 μm.