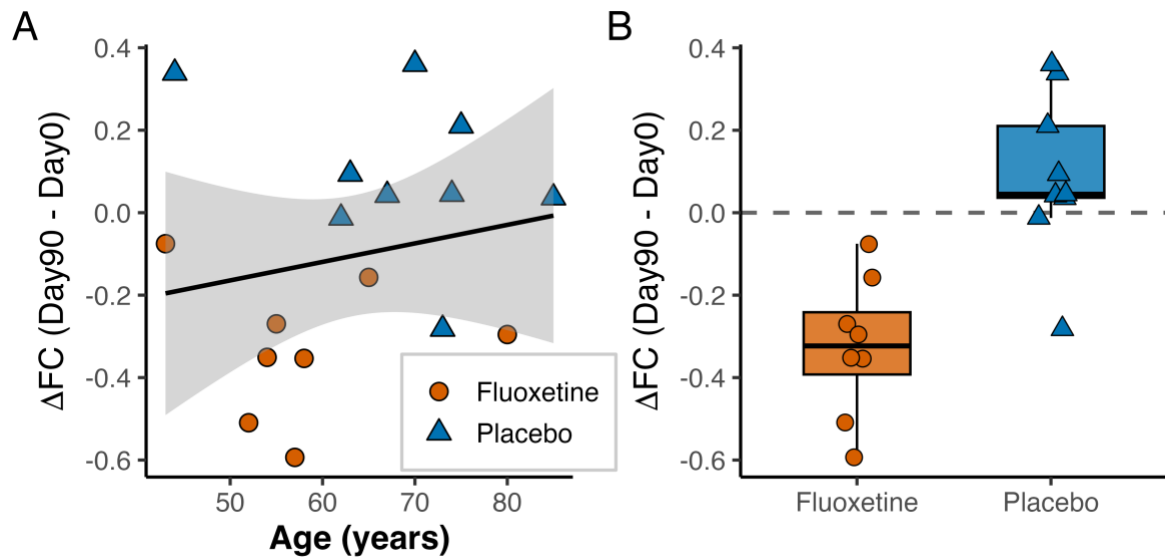
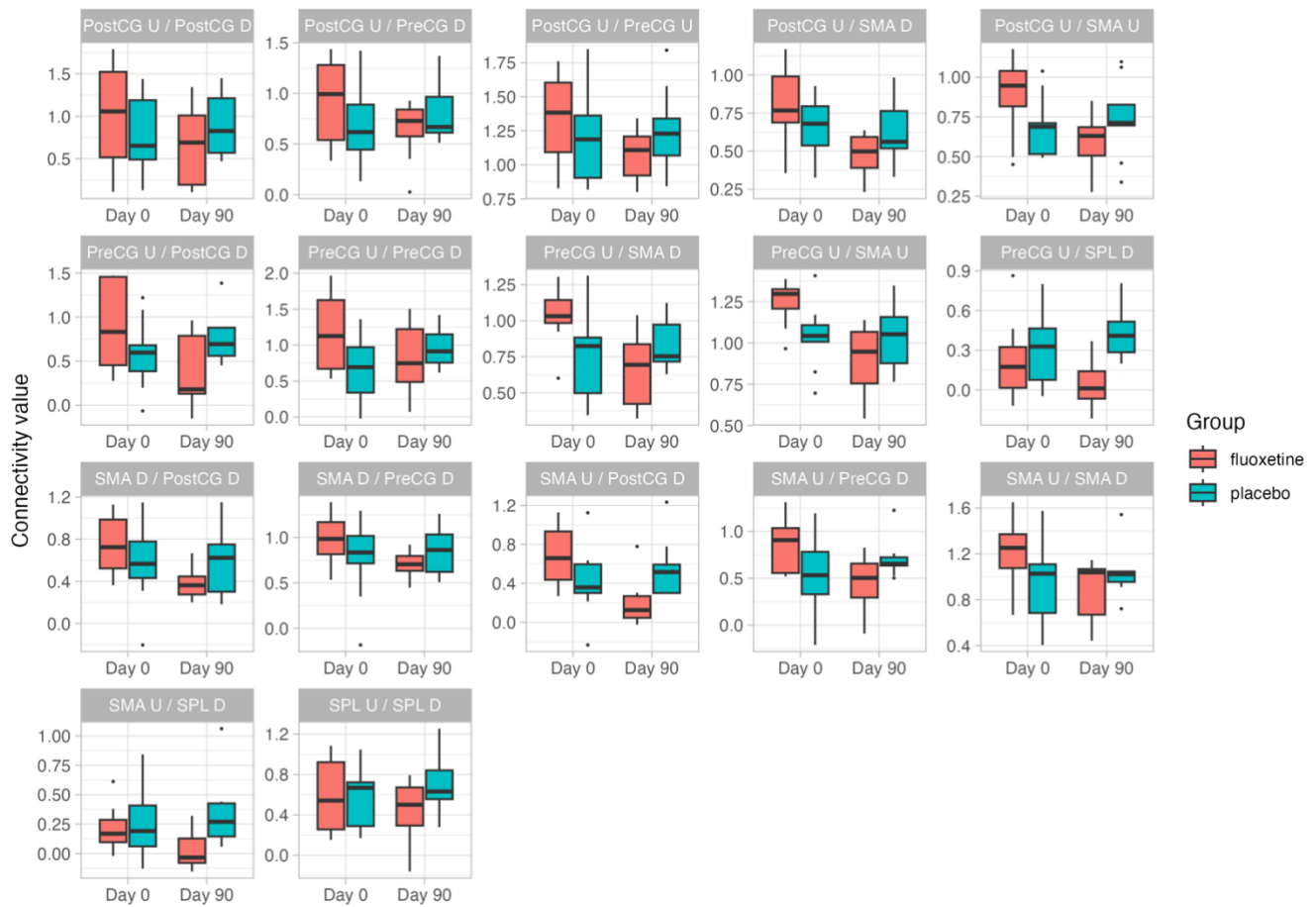


Supplementary material



Supplementary Fig. 1 Relationship between age and rsFC change ($\Delta FC = \text{Day90} - \text{Day0}$) (A) shows individual ΔFC values as a function of age in the fluoxetine and placebo groups. The black line indicates the global linear fit across all participants ($r = 0.19$, $P = 0.46$). (B) highlights the distribution of ΔFC values by group. The dashed horizontal line indicates no change in rsFC ($\Delta FC = 0$).

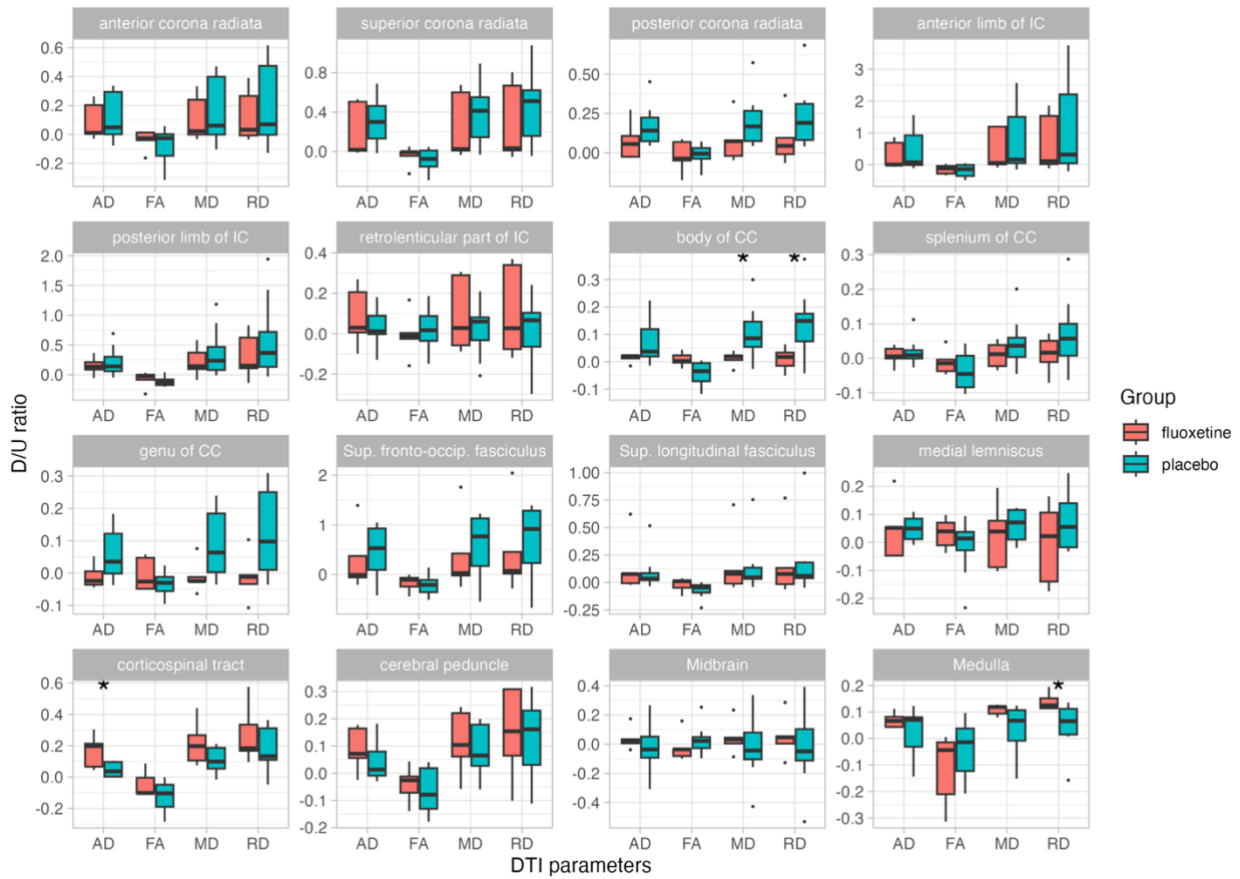


Supplementary Fig. 2 Median connectivity value for each connection between the ROIs composing the cluster at Days 0 and 90

D = damaged hemisphere; U = undamaged hemisphere; SMA = juxtapositional lobule cortex; PreCG = Precentral gyrus; PostCG = postcentral gyrus; SPL = superior parietal lobule.

Supplementary Table 1 Adverse events in the 24 participants receiving one of the study treatments

	Fluoxetine (n = 22)	Placebo (n = 25)	Overall (n = 47)
Infection (n, %)	3 (13.6)	7 (28.0)	10 (21.3)
Constipation (n, %)	4 (18.2)	5 (20.0)	9 (19.6)
Psychiatric disorders (n, %)	2 (09.1)	5 (20.0)	7 (14.9)
Gastrointestinal ailment (n, %)	1 (04.6)	4 (16.0)	5 (10.6)
Pain (n, %)	3 (13.6)	1 (04.0)	4 (08.5)
Cytopenia (n, %)	2 (09.1)	0 (00.0)	2 (04.3)
Dysuria (n, %)	1 (04.6)	1 (04.0)	2 (04.3)
Algoneurodystrophy (n, %)	1 (04.6)	0 (00.0)	1 (02.1)
Coma (n, %)	0 (00.0)	1 (04.0)	1 (02.1)
Bone fracture (n, %)	1 (04.6)	0 (00.0)	1 (02.1)
Intergluteal cleft fissure (n, %)	1 (04.6)	0 (00.0)	1 (02.1)
Hypokalemia (n, %)	1 (04.6)	0 (00.0)	1 (02.1)
Perineal mycosis (n, %)	1 (04.6)	0 (00.0)	1 (02.1)
Spasticity (n, %)	1 (04.6)	0 (00.0)	1 (02.1)
Deep vein thrombosis (n, %)	0 (00.0)	1 (04.0)	1 (02.1)



Supplementary Fig. 3 Median Damaged/Undamaged (D/U) ratio derived from DTI analysis at Day 90 versus Day 0

IC = internal capsule; CC = corpus callosum. $*P < 0.05$