

Figure S1: Difference between mean SBP from 2019, 2020 and 2021 NFHS-5 data and 2015 NFHS-4 data in females, by BMI (y axis) and age (x axis).

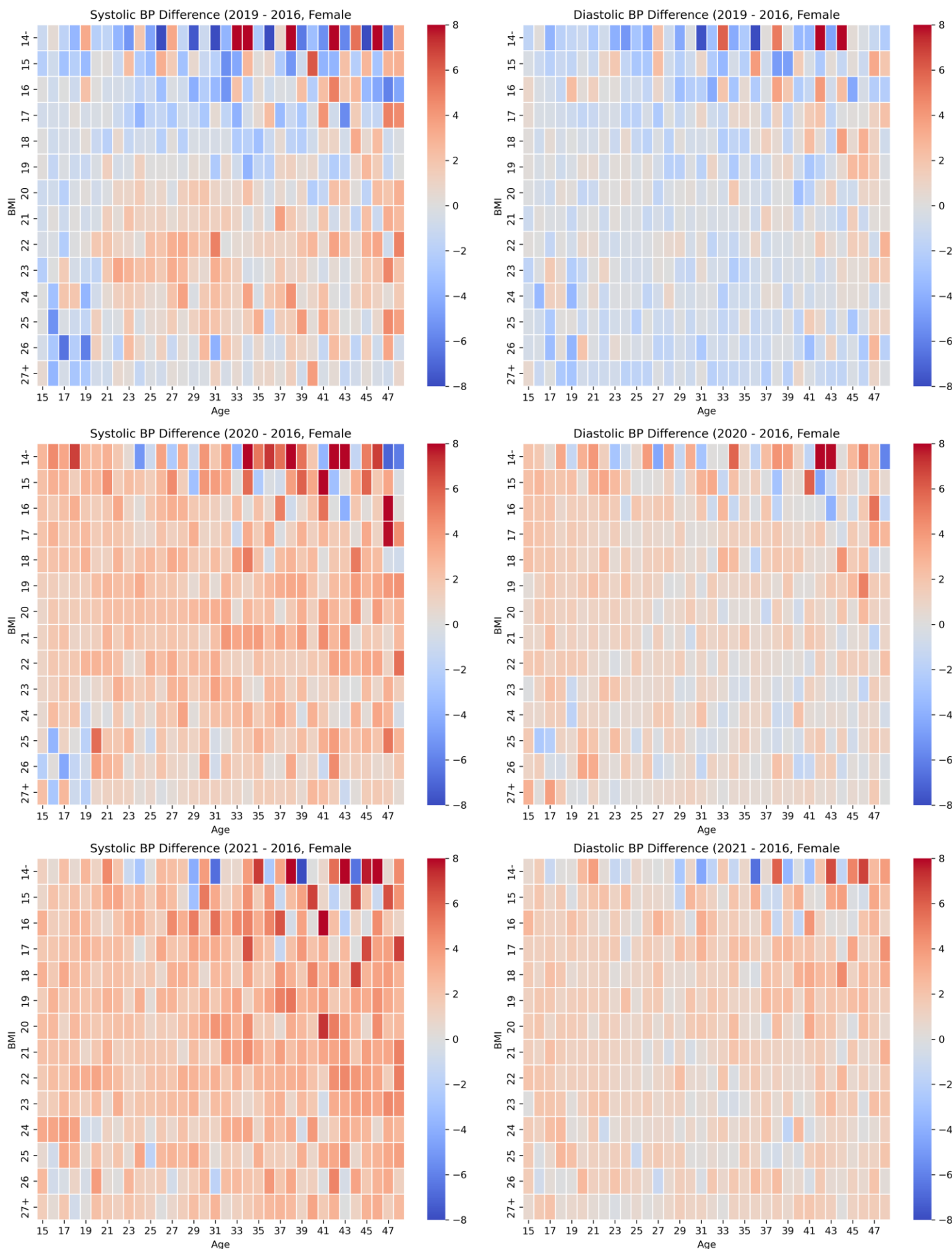


Figure S2: Difference between mean SBP from 2019, 2020 and 2021 NFHS-5 data and 2016 NFHS-4 data in females, by BMI (y axis) and age (x axis).

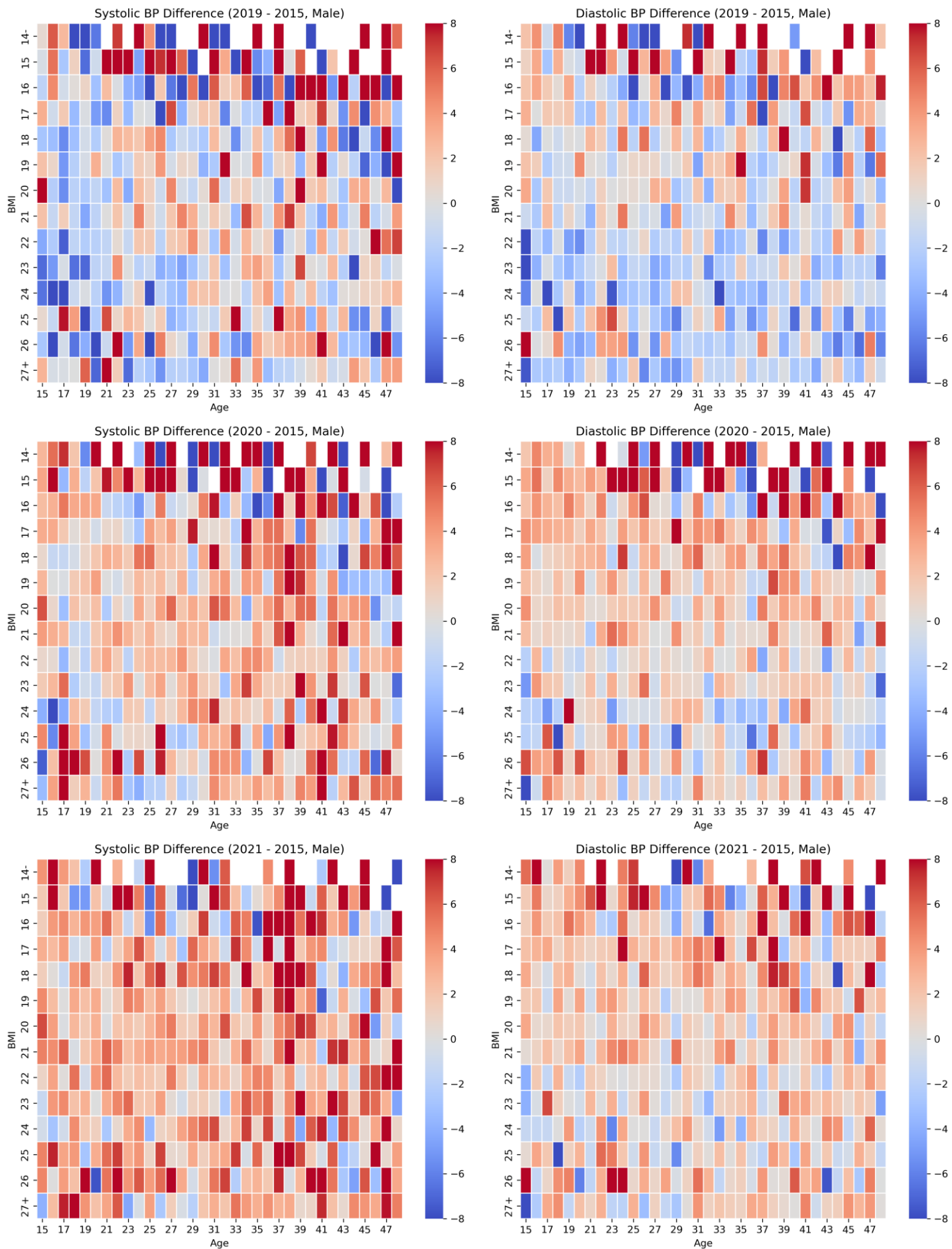


Figure S3: Difference between mean SBP from 2019, 2020 and 2021 NFHS-5 data and 2015 NFHS-4 data in males, by BMI (y axis) and age (x axis).

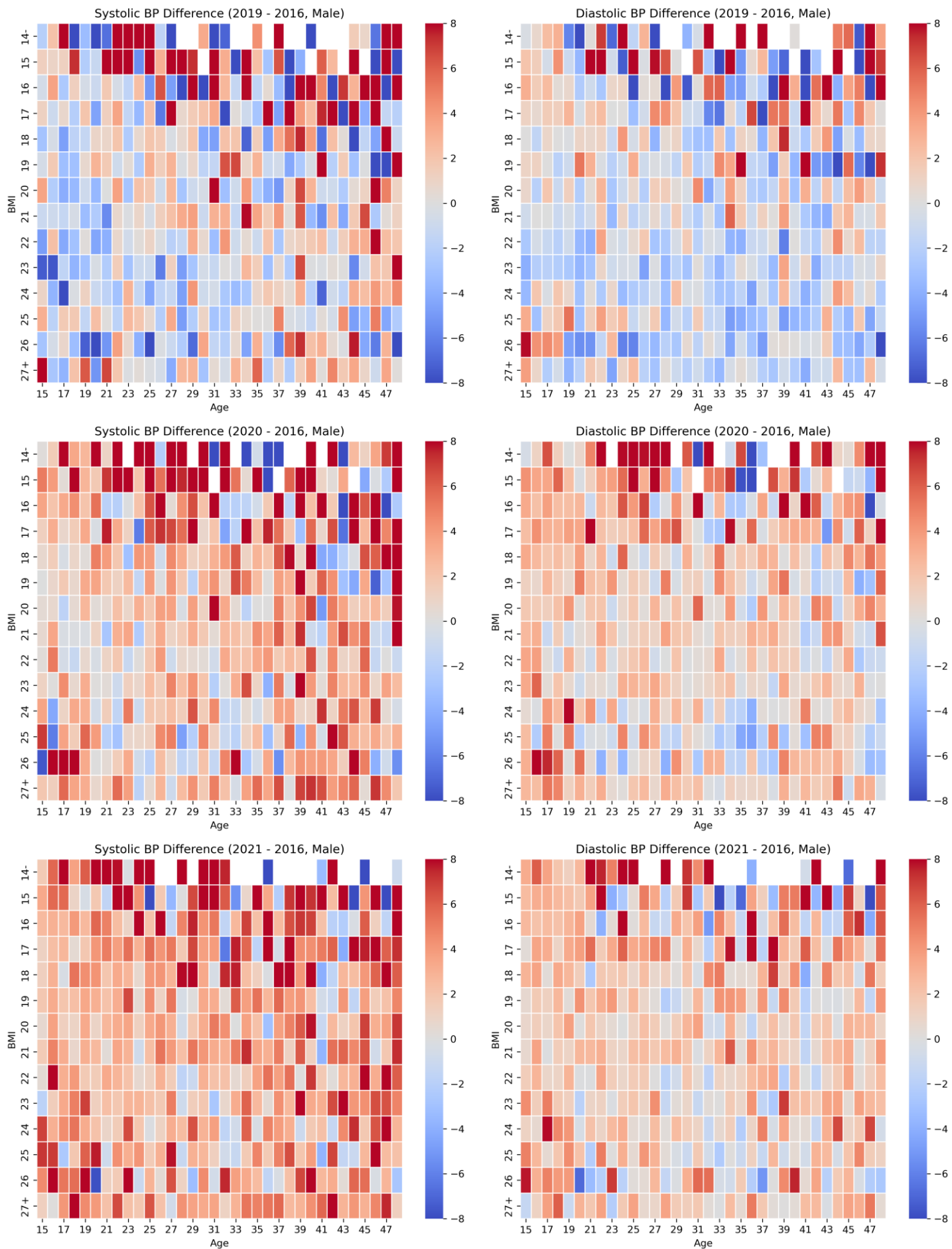


Figure S4: Difference between mean SBP from 2019, 2020 and 2021 NFHS-5 data and 2016 NFHS-4 data in males, by BMI (y axis) and age (x axis).

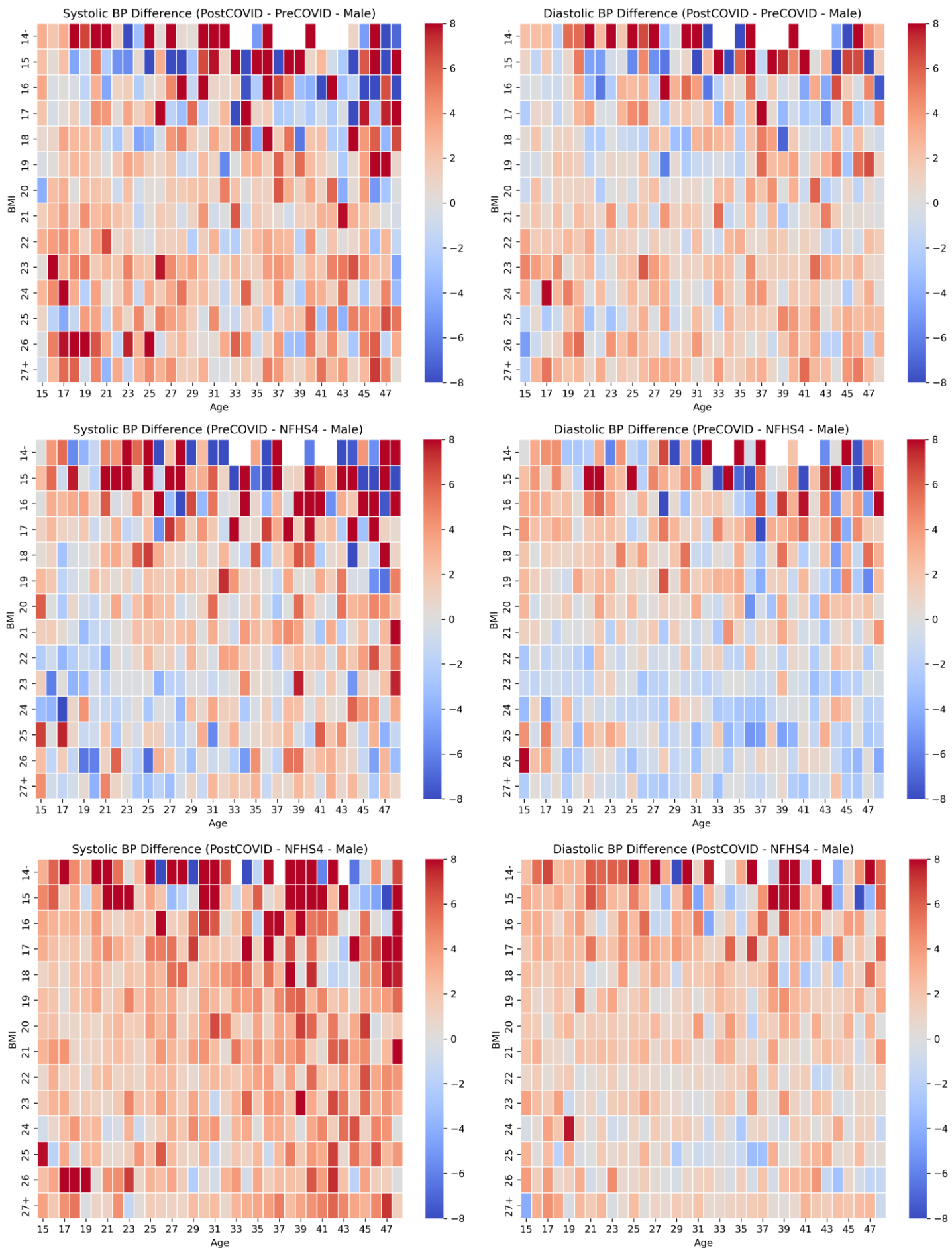


Figure S5: Difference between mean SBP pre-COVID and post-COVID NFHS-5 data and NFHS-4 data in females, by BMI (y axis) and age (x axis).

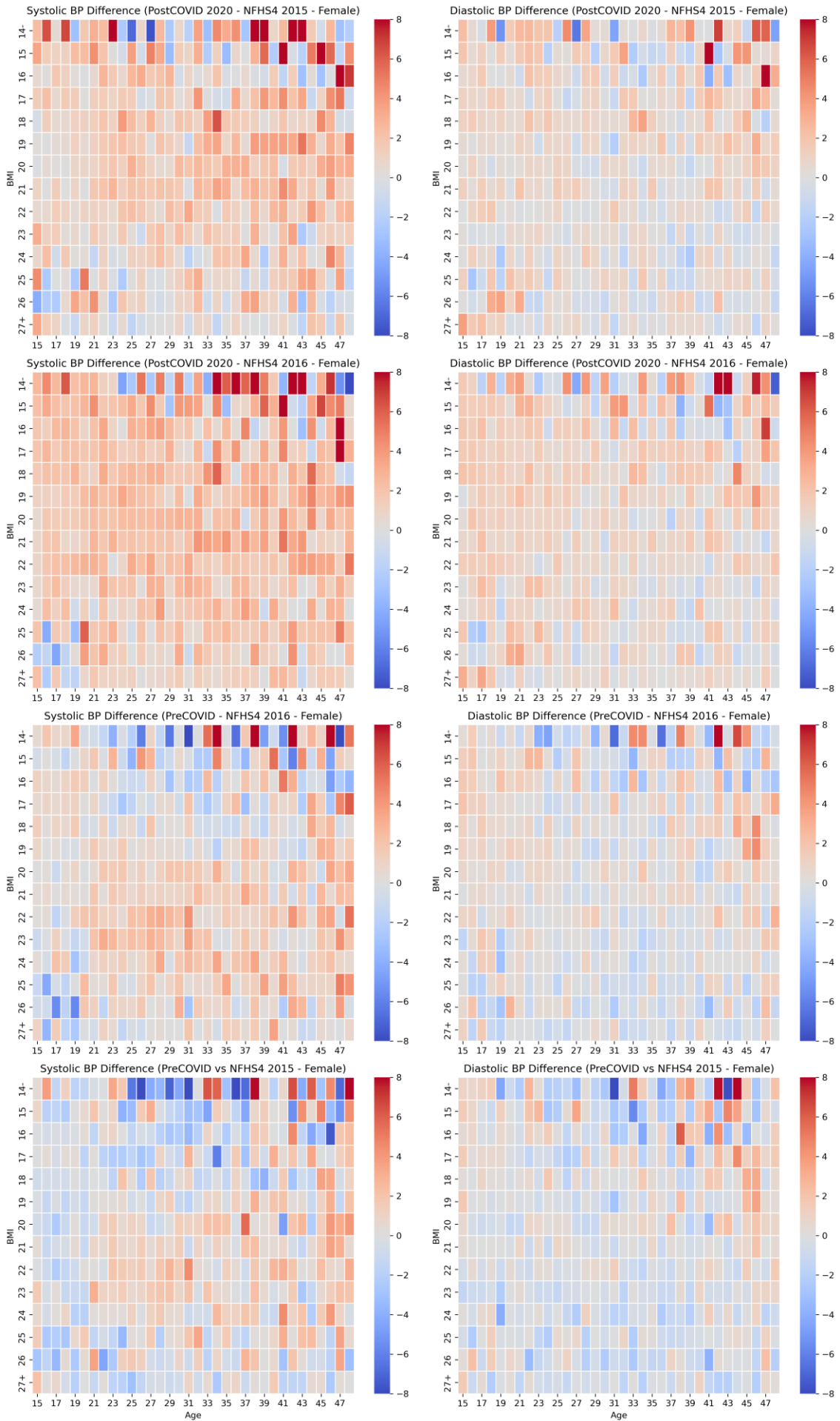


Figure S6: Difference between mean SBP pre-COVID 2020 and post-COVID 2020 NFHS-5 data and NFHS-4 data as well as Pre-COVID NHS-5 and NFHS-4 2015 and 2016 data in females, by BMI (y axis) and age (x axis).

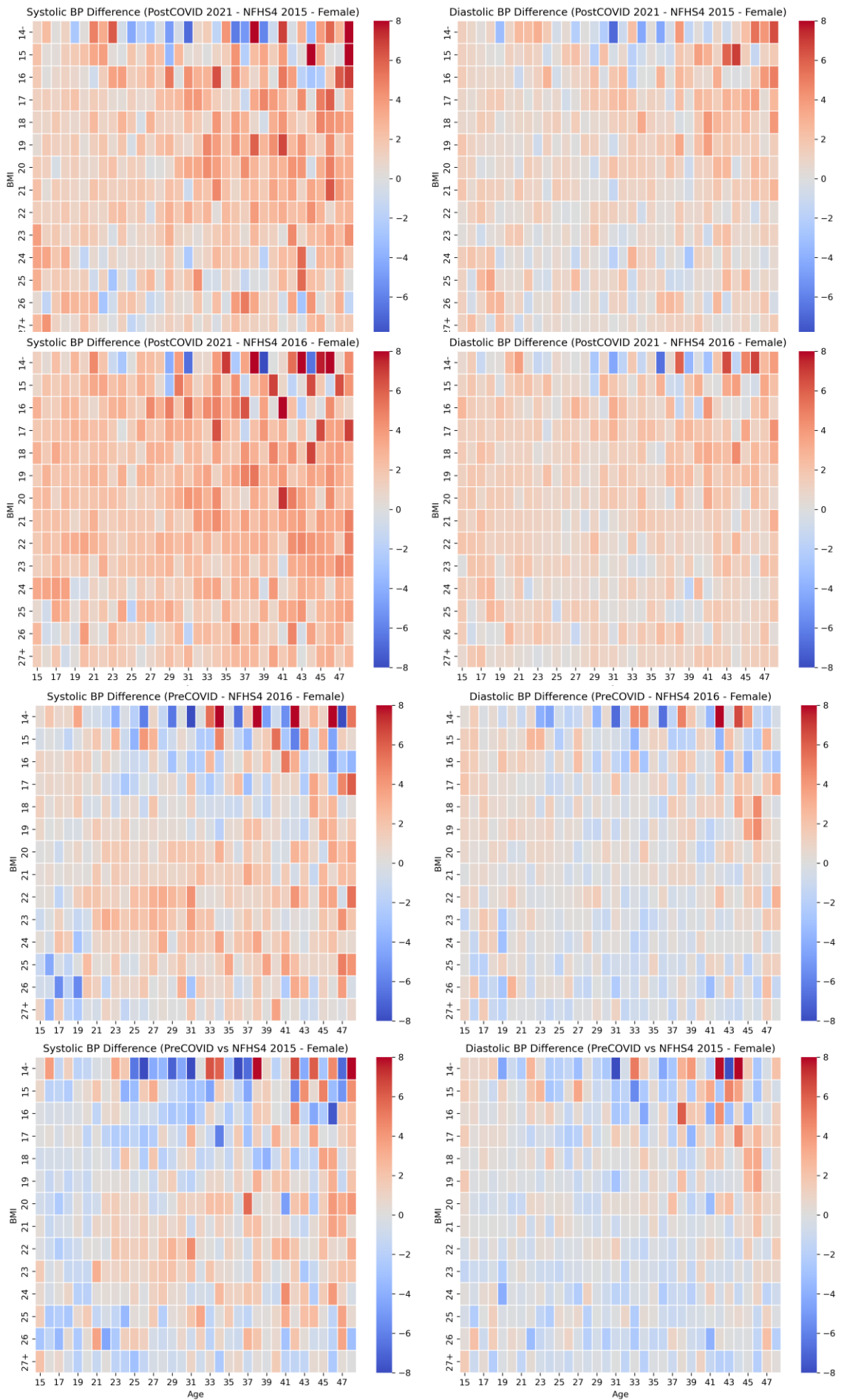
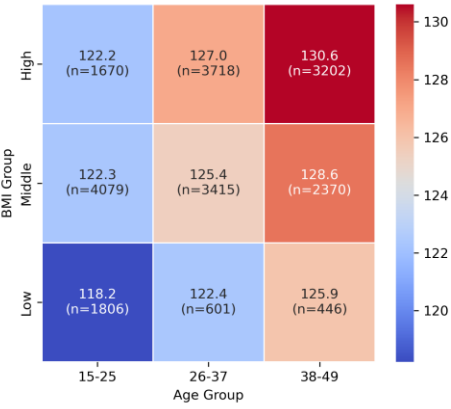
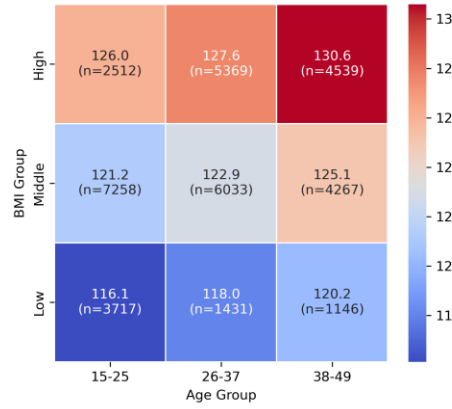


Figure S7: Difference between mean SBP pre-COVID 2021 and post-COVID 2021 NFHS-5 data and NFHS-4 data as well as Pre-COVID NHS-5 and NFHS-4 2015 and 2016 data in females, by BMI (y axis) and age (x axis).

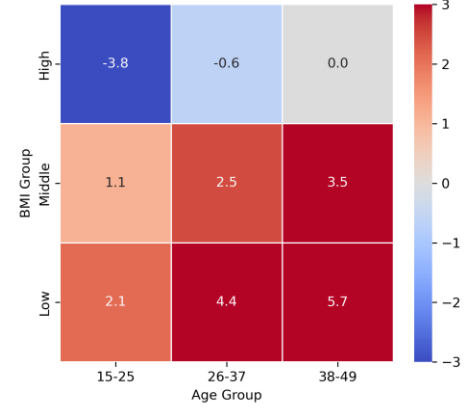
Systolic BP Comparison (Post-Covid)
NFHS5-post (Male)
Total N = 21307



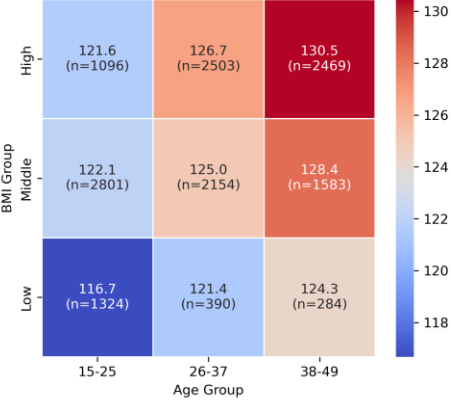
Systolic BP Comparison (Post-Covid)
NFHS4-Posteq (Male)
Total N = 36272



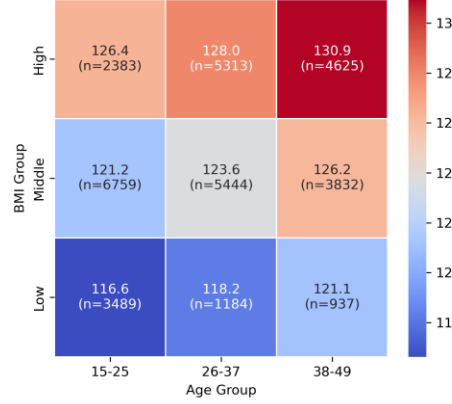
Systolic BP Comparison (Post-Covid)
Difference (NFHS5-post - NFHS4-Posteq) (Male)



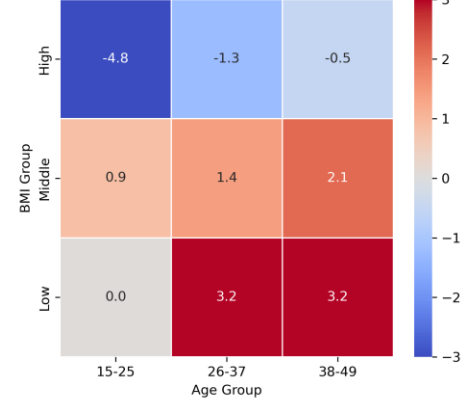
Systolic BP Comparison (Pre-Covid)
NFHS5-pre (Male)
Total N = 14604



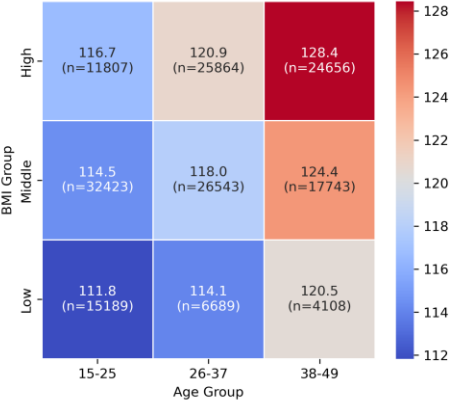
Systolic BP Comparison (Pre-Covid)
NFHS4-Preeq (Male)
Total N = 33966



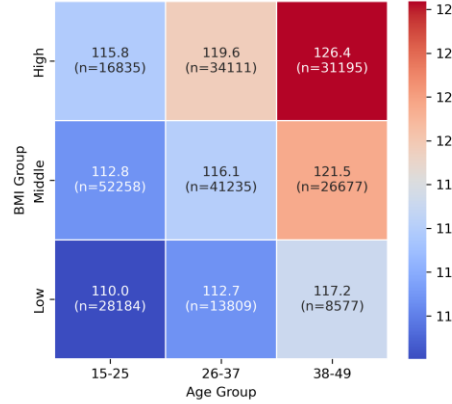
Systolic BP Comparison (Pre-Covid)
Difference (NFHS5-pre - NFHS4-Preeq) (Male)



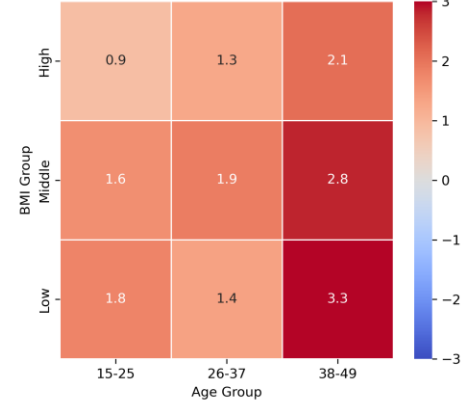
Systolic BP Comparison (Post-Covid)
NFHS5-post (Female)
Total N = 165022



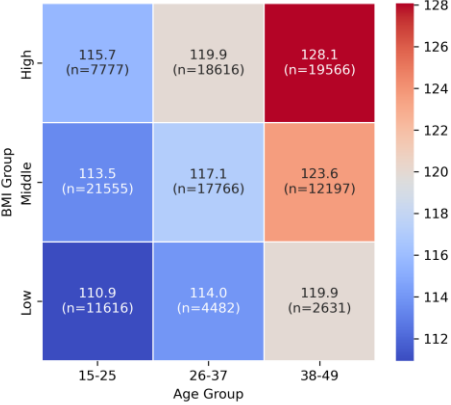
Systolic BP Comparison (Post-Covid)
NFHS4-Posteq (Female)
Total N = 252881



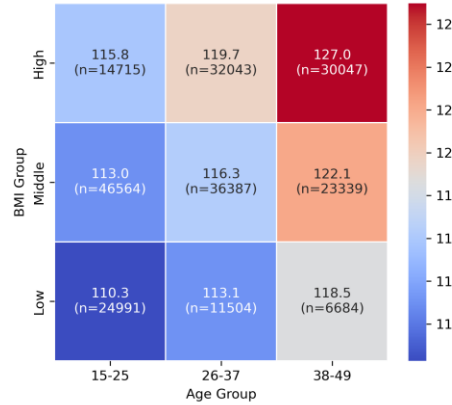
Systolic BP Comparison (Post-Covid)
Difference (NFHS5-post - NFHS4-Posteq) (Female)



Systolic BP Comparison (Pre-Covid)
NFHS5-pre (Female)
Total N = 116206



Systolic BP Comparison (Pre-Covid)
NFHS4-Preeq (Female)
Total N = 226274



Systolic BP Comparison (Pre-Covid)
Difference (NFHS5-pre - NFHS4-Preeq) (Female)

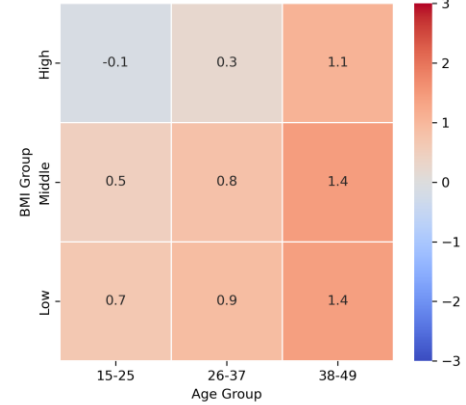
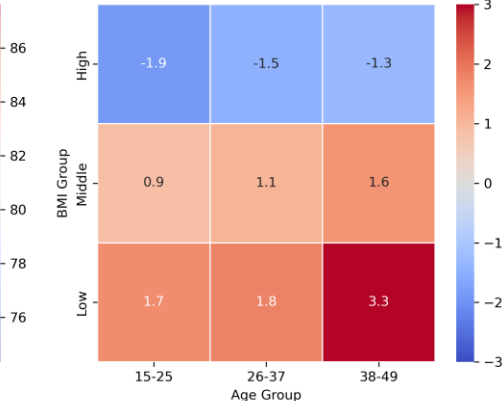
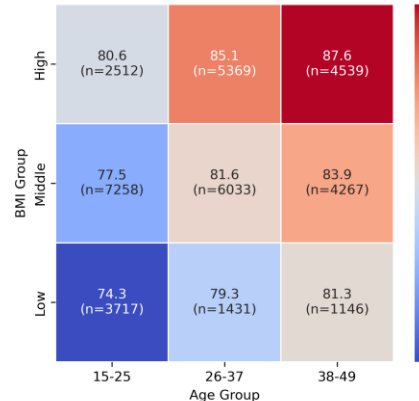
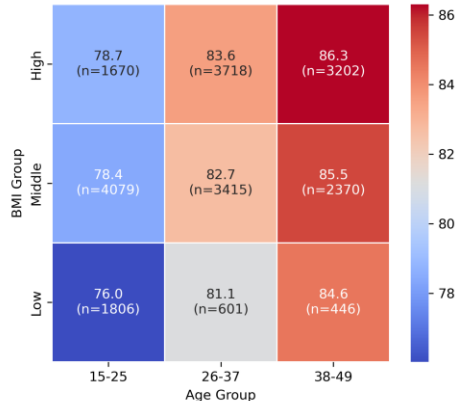


Figure S8: Average SBP Pre- and Post-COVID from NFHS-5 as well as equivalent NFHS-4 datasets and difference between mean SBP in males and females, by BMI (y axis) and age (x axis).

Diastolic BP Comparison (Post-Covid)
NFHS5-post (Male)
Total N = 21307

Diastolic BP Comparison (Post-Covid)
NFHS4-Posteq (Male)
Total N = 36272

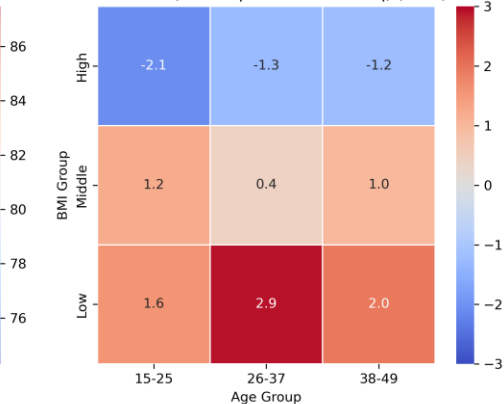
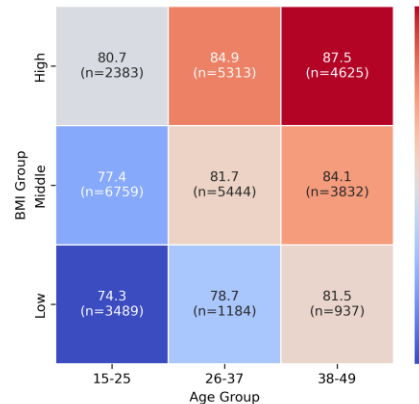
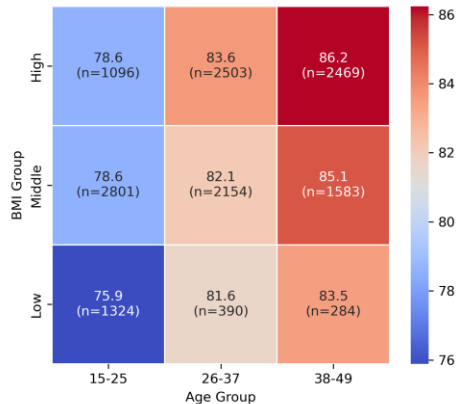
Diastolic BP Comparison (Post-Covid)
Difference (NFHS5-post - NFHS4-Posteq) (Male)



Diastolic BP Comparison (Pre-Covid)
NFHS5-pre (Male)
Total N = 14604

Diastolic BP Comparison (Pre-Covid)
NFHS4-Preeq (Male)
Total N = 33966

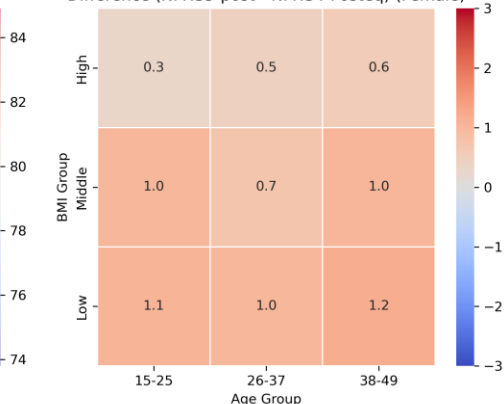
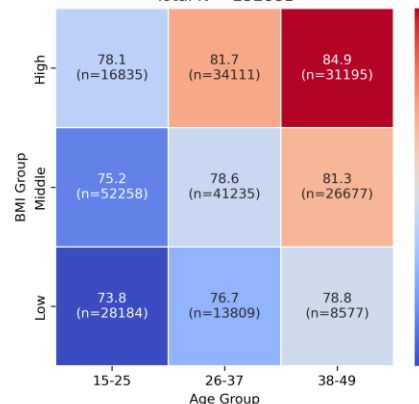
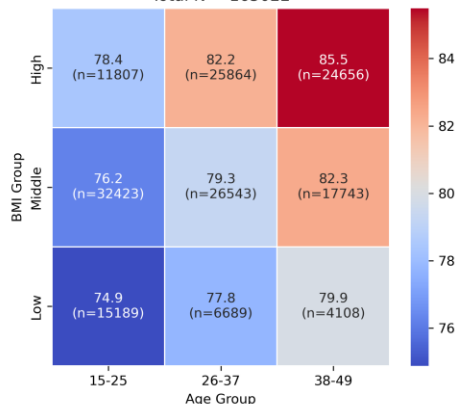
Diastolic BP Comparison (Pre-Covid)
Difference (NFHS5-pre - NFHS4-Preeq) (Male)



Diastolic BP Comparison (Post-Covid)
NFHS5-post (Female)
Total N = 165022

Diastolic BP Comparison (Post-Covid)
NFHS4-Posteq (Female)
Total N = 252881

Diastolic BP Comparison (Post-Covid)
Difference (NFHS5-post - NFHS4-Posteq) (Female)



Diastolic BP Comparison (Pre-Covid)
NFHS5-pre (Female)
Total N = 116206

Diastolic BP Comparison (Pre-Covid)
NFHS4-Preeq (Female)
Total N = 226274

Diastolic BP Comparison (Pre-Covid)
Difference (NFHS5-pre - NFHS4-Preeq) (Female)

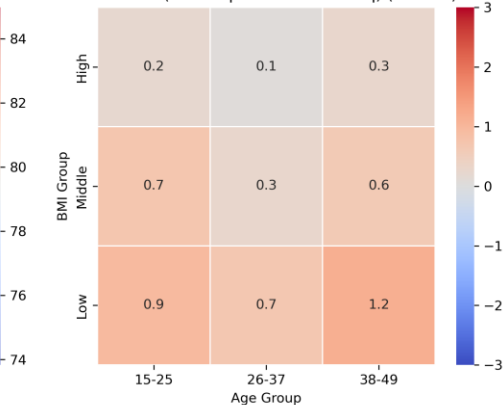
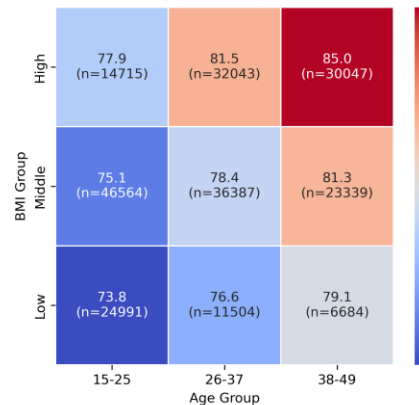
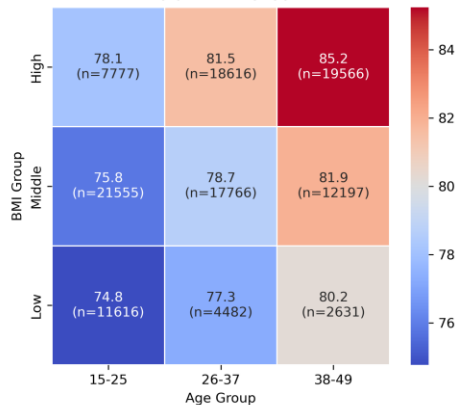


Figure S9: Average DBP Pre- and Post-COVID from NFHS-5 as well as equivalent NFHS-4 datasets and difference between mean DBP in males and females, by BMI (y axis) and age (x axis).