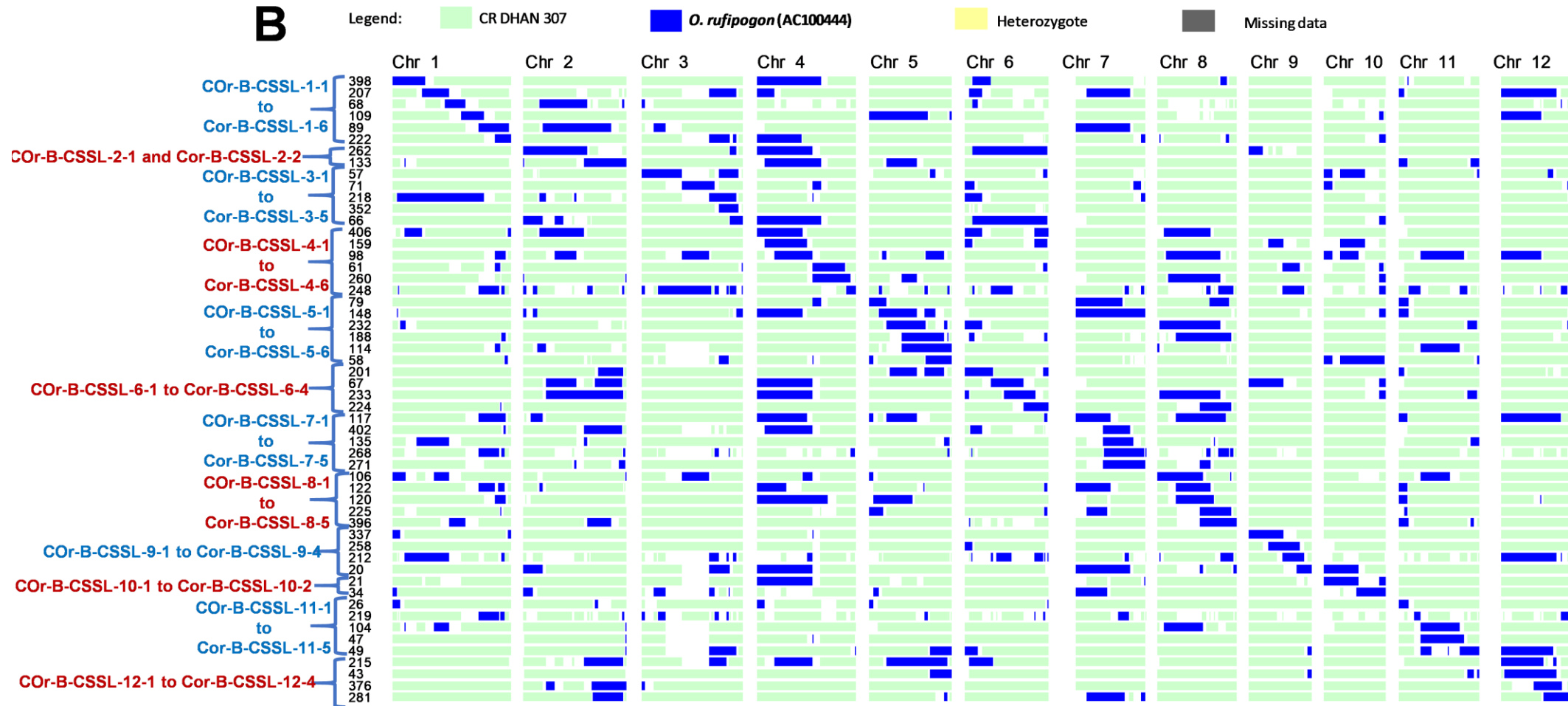


Supplementary Fig. 1 Graphical representation of seed setting (in numbers) in F₁ and BC₁F₁ after emasculation and pollination in 56 interspecific crosses involving four accessions of *Oryza rufipogon* as donor and 14 *Oryza sativa* cultivars as recurrent parent. To generate F₁ seeds, the *Oryza rufipogon* accessions were used as pollen donor. To generate BC₁F₁ seeds, the 56 F₁ progenies were used as pollen donor.



Supplementary Fig. 2 Graphical representation of the chromosome segment substitution lines (CSSLs) from the identified from BC₃F₆ population of CR Dhan 307 × *O. rufipogon* accession AC100444 identified through CSSL Finder software