

Discovery of Serum Biomarkers for Early Detection of Rabies Virus Infection Using Global Metabolic Profiling

Wongsakorn Wongwadhunyoo¹, Phornpimon Tiphara², Joel Tarning^{2,3}, Punchaya Supasawat⁴,
Thassanee Srisook⁴, Kunjimas Ketsuwan⁵, Rojjanaporn Pulmanusahakul^{4,6}, Woranich
Hinthong^{4,6}, Promsin Masrinoul⁵, Onrapak Reamtong^{2,7}, Peerut Chienwichai^{4,6,*}

¹ Faculty of Veterinary Science, Mahidol University, Nakhon Pathom, 73170, Thailand

² Mahidol Oxford Tropical Medicine Research Unit, Faculty of Tropical Medicine, Mahidol
University, Bangkok, 10400, Thailand

³ Centre for Tropical Medicine and Global Health, Nuffield Department of Clinical Medicine,
University of Oxford, Oxford, OX1 3SY, United Kingdom

⁴ Research Center on Clinical and System Microbiology (RCSyM), Chulabhorn Royal Academy,
Bangkok, 10210, Thailand

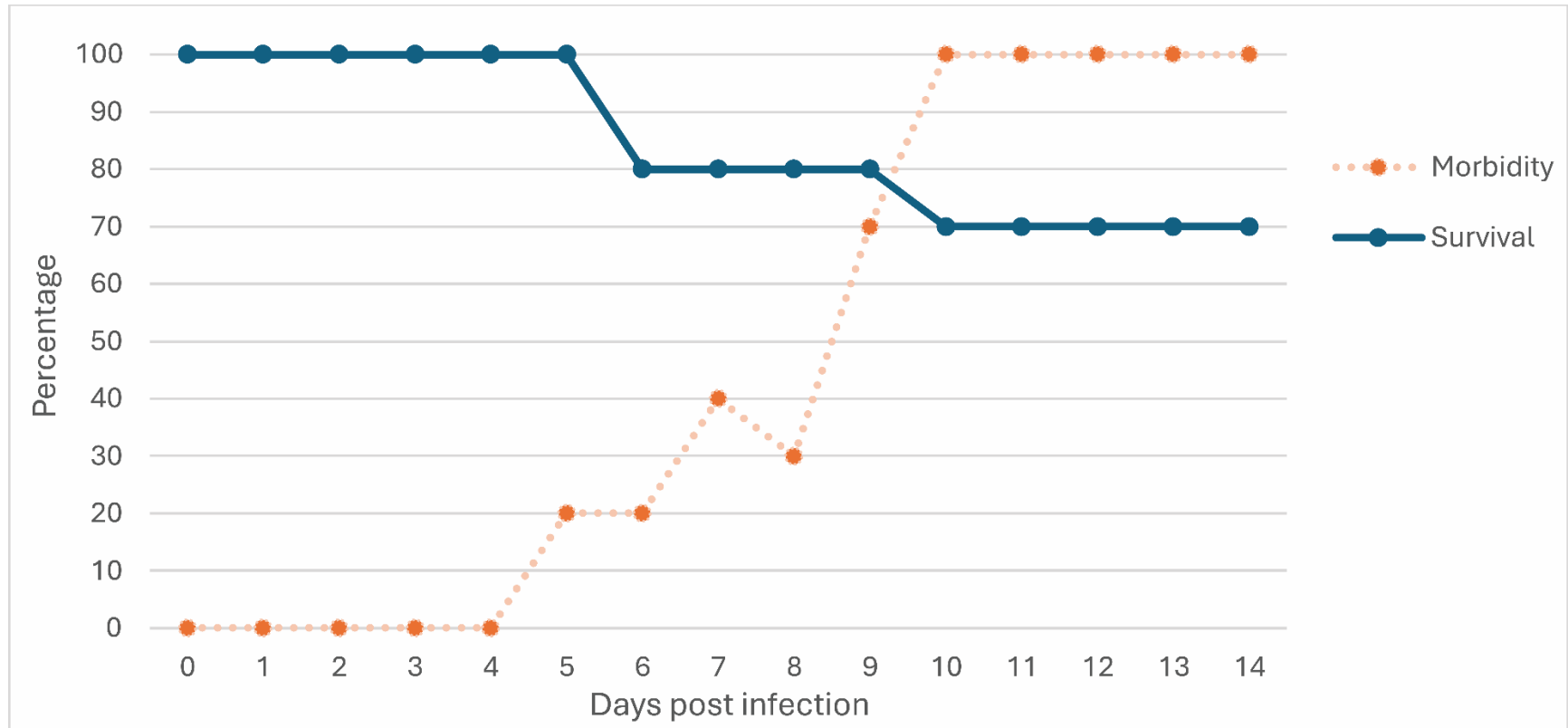
⁵ Institute of Molecular Biosciences, Mahidol University, Nakhon Pathom, 73170, Thailand

⁶ Princess Srisavangavadhana Faculty of Medicine, Chulabhorn Royal Academy, Bangkok, 10210,
Thailand

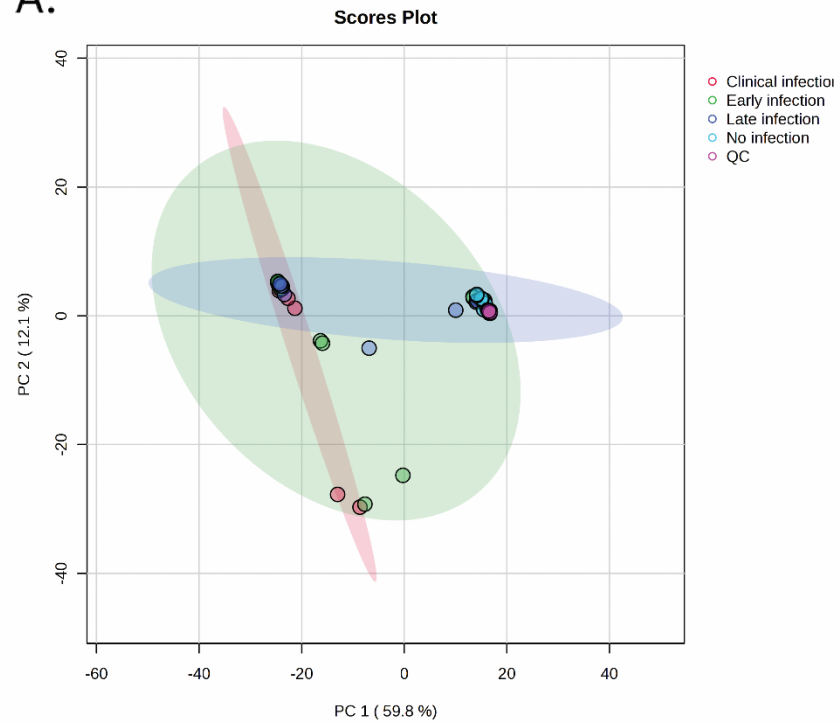
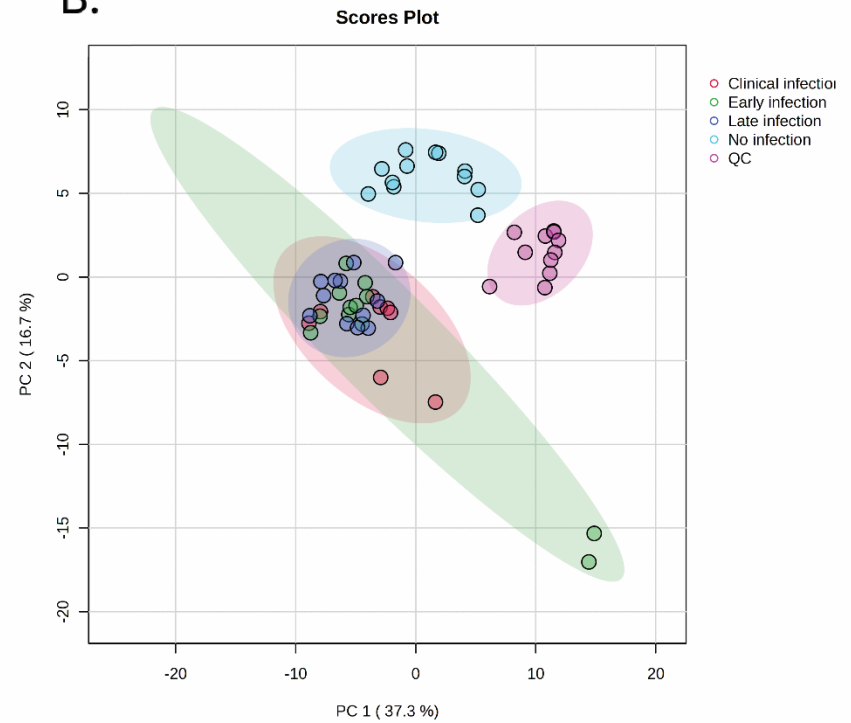
⁷ Department of Molecular Tropical Medicine and Genetics, Faculty of Tropical Medicine,
Mahidol University, Bangkok, 10400, Thailand

*Corresponding author: peerut.chi@cra.ac.th

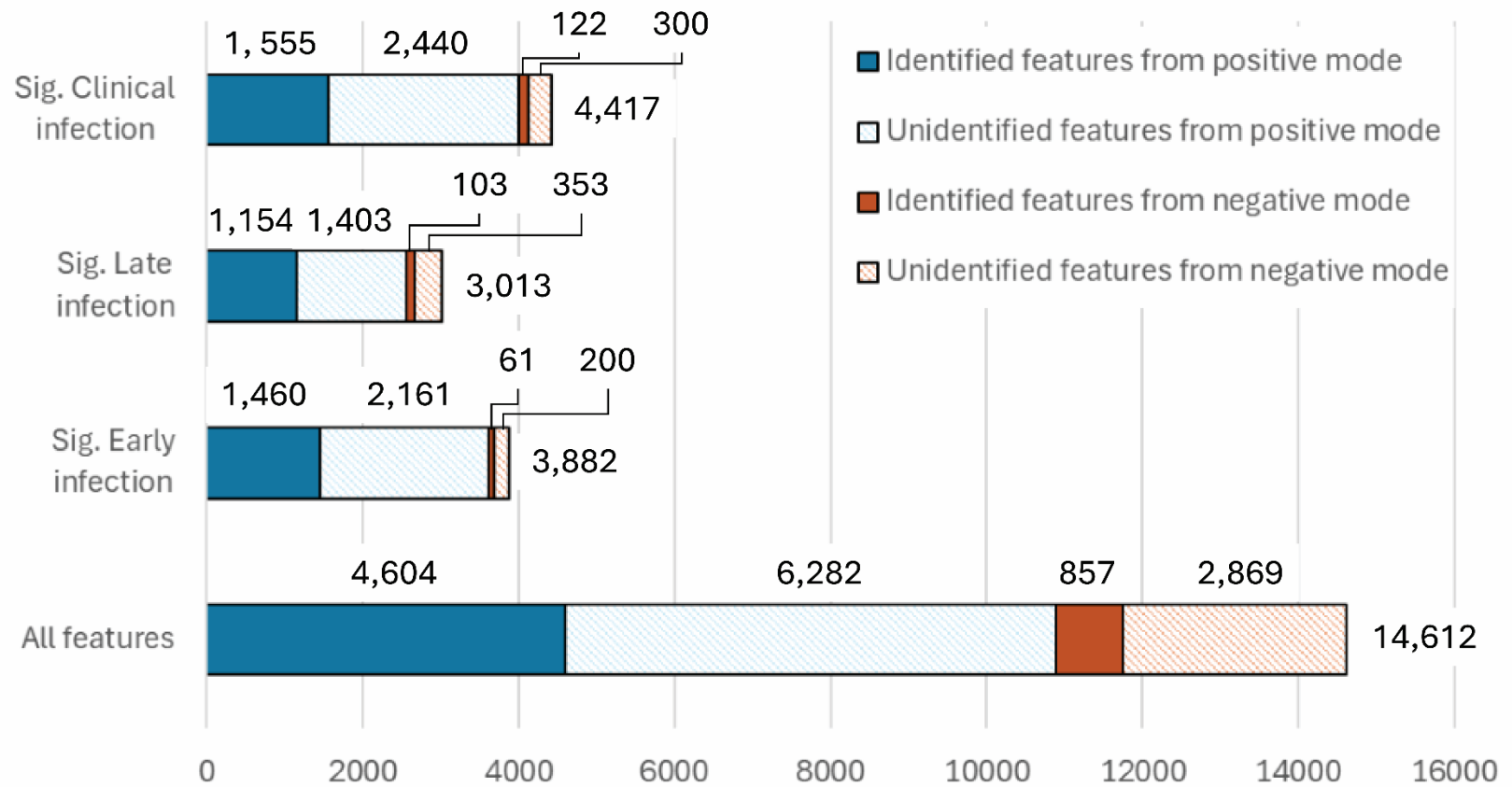
Supplementary information



Supplementary Figure S1. Percentage morbidity and survival in RABV-infected mice.

A.**B.**

Supplementary Figure S2. Results of the QC process applied to the metabolomic data. A. The PCA score plot of the metabolomic data generated in positive ion mode. B. The PCA score plot of the metabolomic data generated in negative ion mode.



Supplementary Figure S3. Distribution of features detected in the entire dataset and of those that significantly differed across the stages of infection. The features are classified by ionization mode.