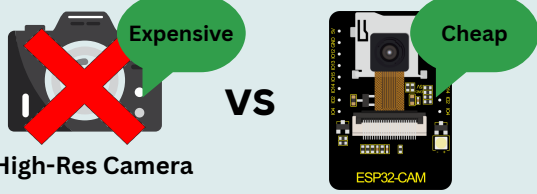


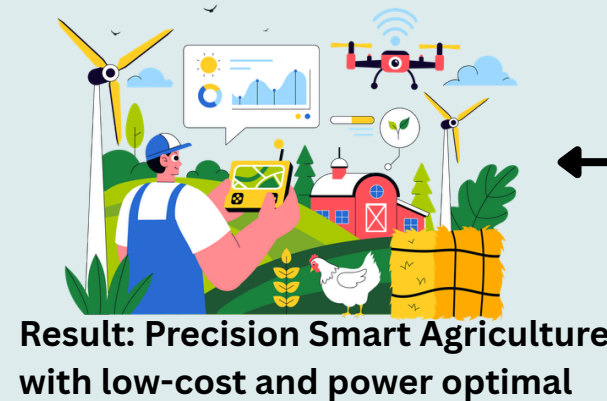
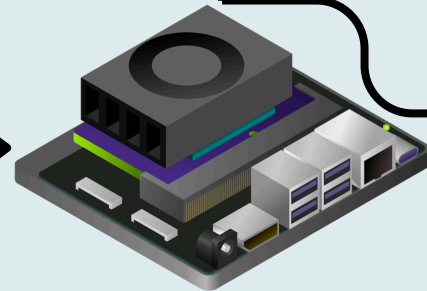
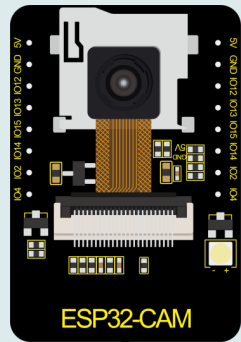
Problem and Context:
Low-Cost Precision Smart Agriculture



High resolution cameras are expensive and consume quite a lot of power.

Methodology: Applying several SR models to find out the model that fits the real problem.

Solution: Low-resolution, low-priced camera with Super-Resolution implementation for resolution enhancement



Model	Computational Load & Latency	Power Consumption	Key Notes
Icon Key	★★ ★	★	
Real-ESRGAN	★★ ★	★★ ★★ ★	Highest Quality, High Cost & Energy
EDSR	★★ ★	★★ ★	Best Balance
ESPCN	★ ★	★★ ★	Highest Efficiency, Reduced Detail