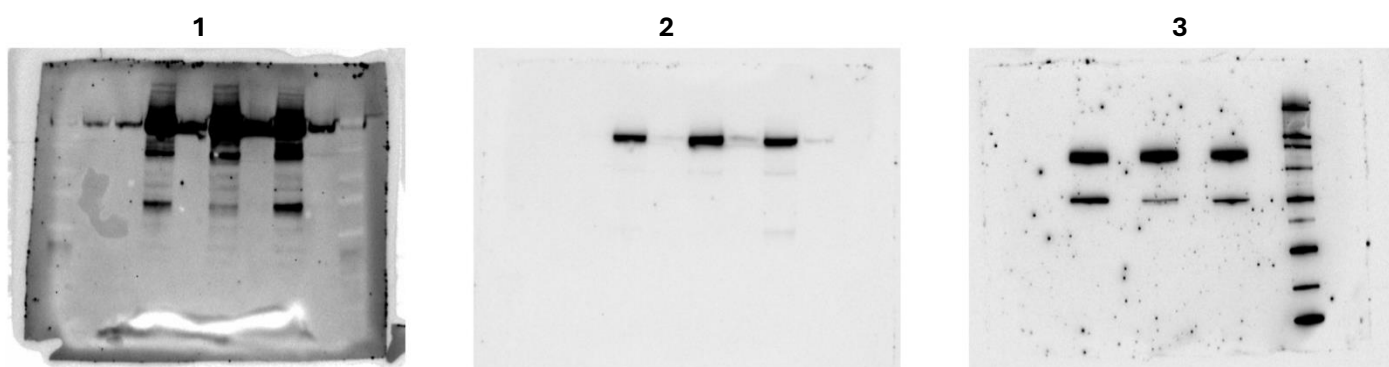
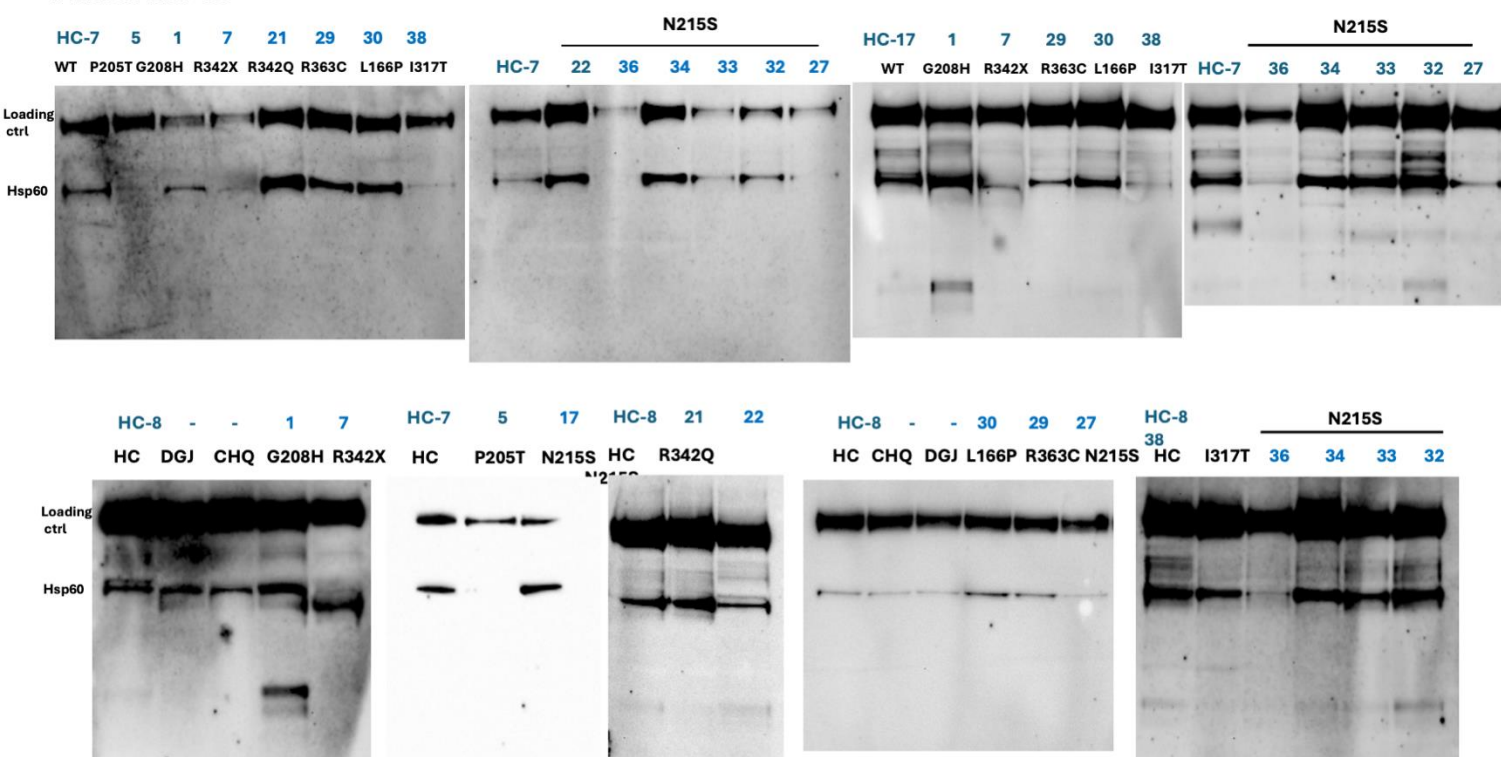
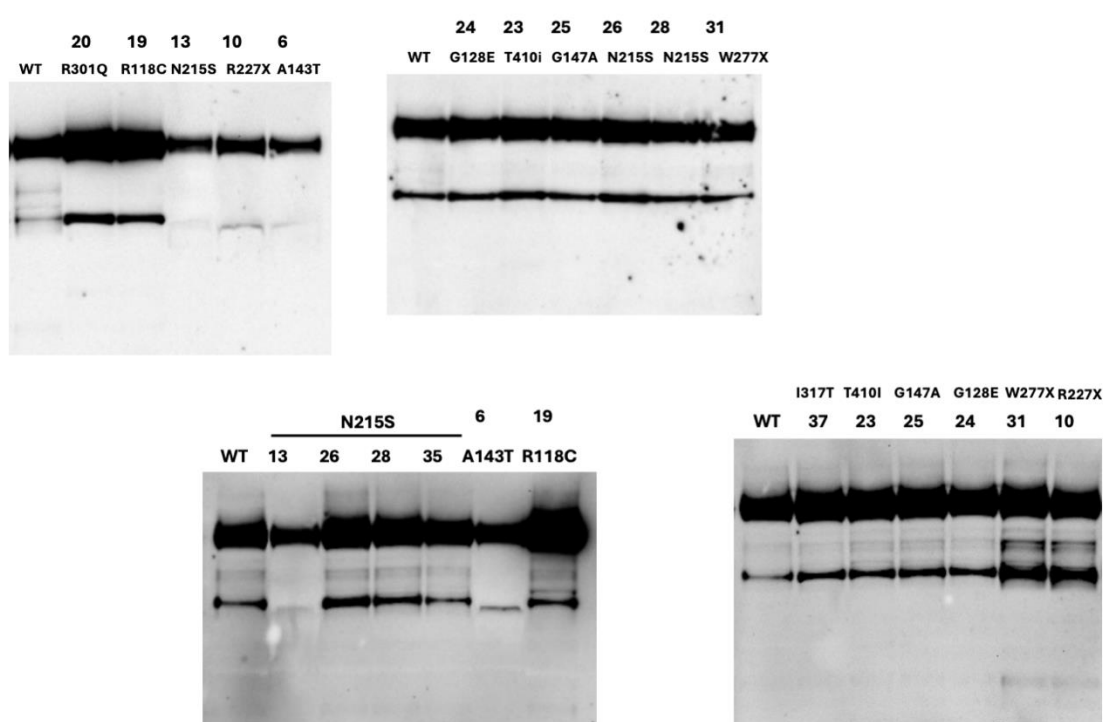


A**B****Males: HSP60****C****Females: HSP60**

Supplementary file: uncropped western blots. (A) Fibroblasts experiments showing: 1. Hsp10 blot, 2. loading control (Na/K ATPase) blot, and 3. Blot for both, Hsp60 and loading control. **(B)** Full uncropped Hsp60 blots for male patients with corresponding Na/K ATPase loading controls. **(C)** Full uncropped Hsp60 blots for females with corresponding NA/K ATPase loading controls.