

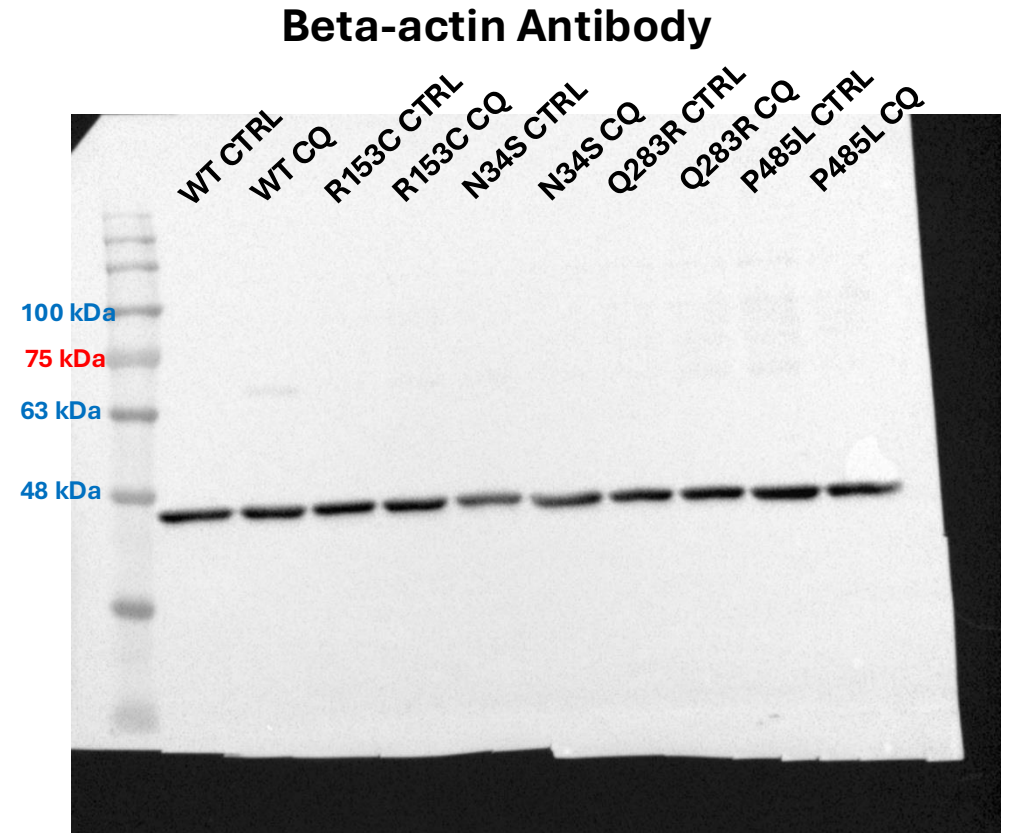
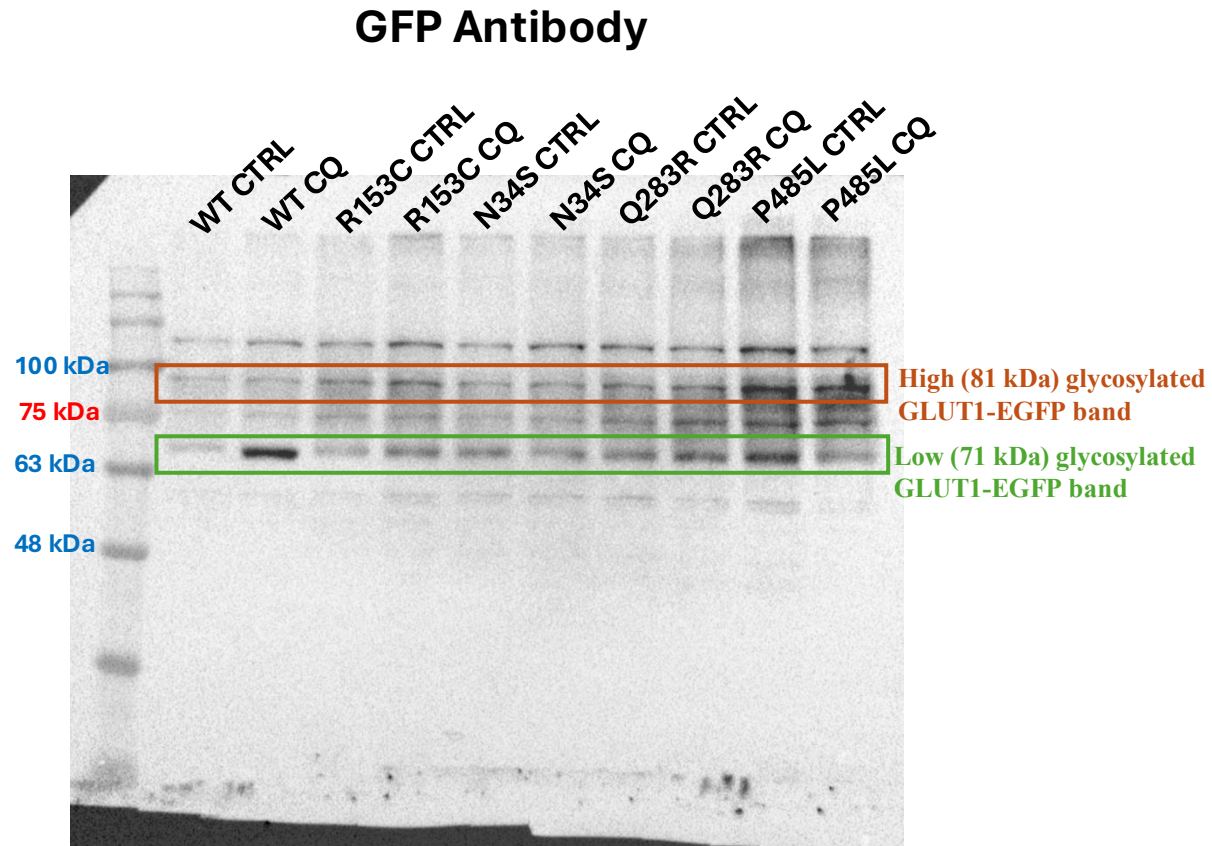
WB Membranes

Western blot of GLUT1-EGFP proteins in hCMEC/D3 cells transfected for 24h with pEGFPN1-GLUT1-WT, pEGFPN1-GLUT1-N34S, pEGFPN1-GLUT1-Q283R and pEGFPN1-GLUT1-P485L constructs after chloroquine (CQ) treatment for 2h or under control condition (CTRL).

The total GLUT1-EGFP protein corresponding to the sum of high (81 kDa) and low (71 kDa) glycosylated bands was normalized on the β -Actin protein level and reported as mean \pm sem (n = 3 for each experimental group). Differences between control condition and chloroquine treatment for each construct were analyzed by paired Student's t test. *p<0.05.

Samples hCMEC #1 - 10/11/25

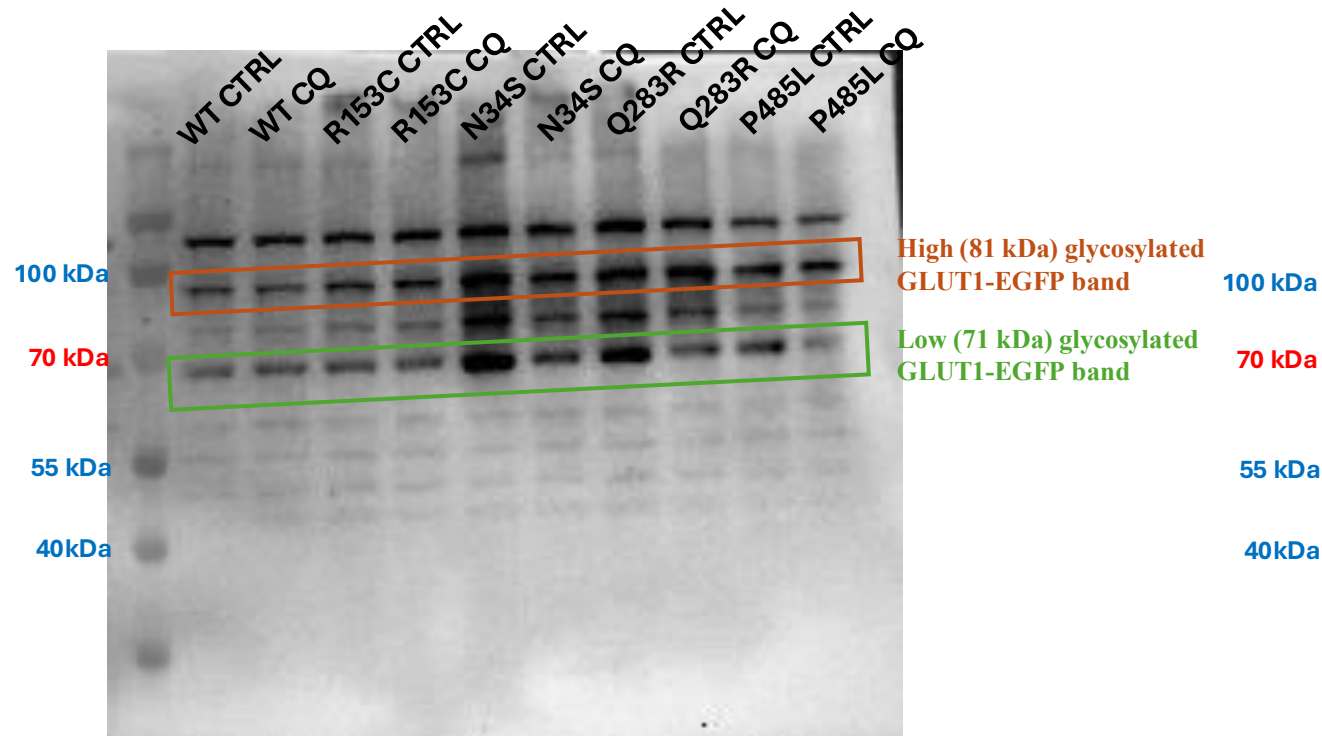
WB 29-30/01/26 (run 29/01/26)



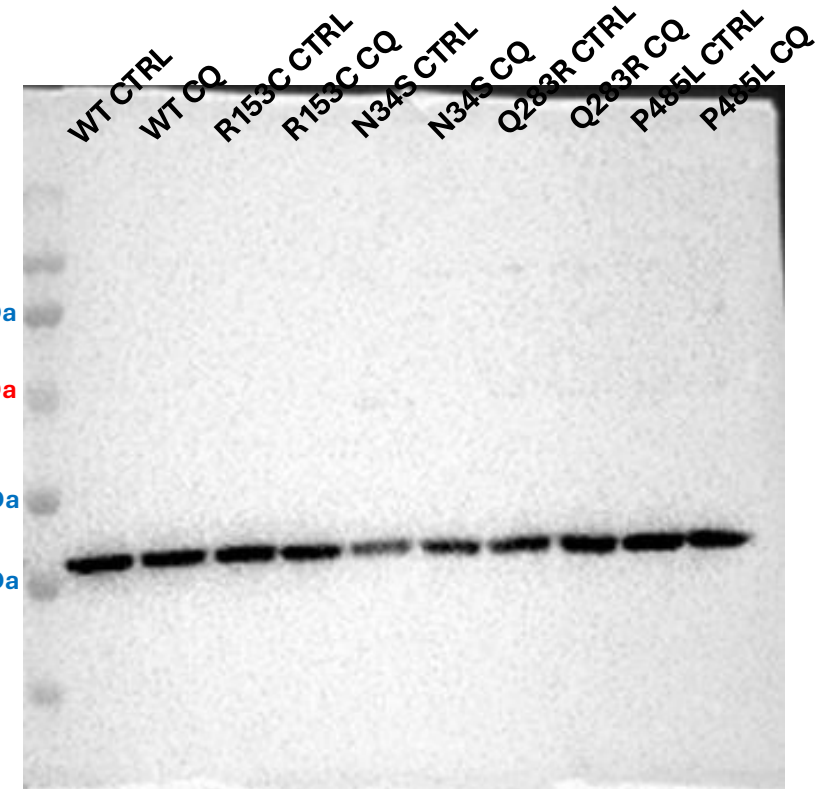
Samples hCMEC #2 - 12/02/26

WB 17-18/02/26 (run 17/02/26)

GFP Antibody



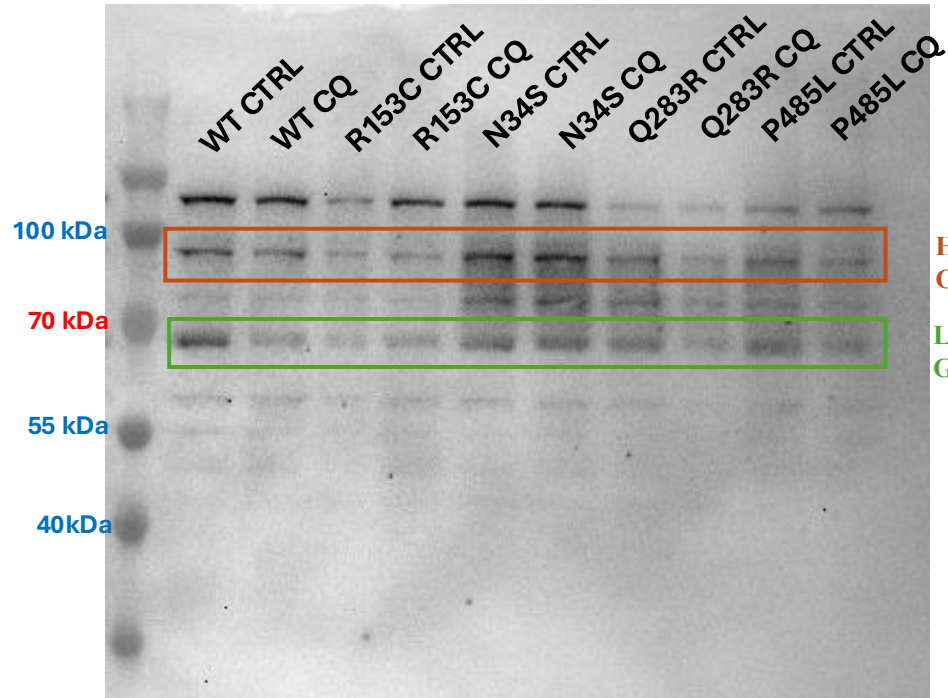
Beta-actin Antibody



Samples hCMEC #3 - 12/02/26

WB 17-18/02/26 (run 17/02/26)

GFP Antibody



Beta-actin Antibody

