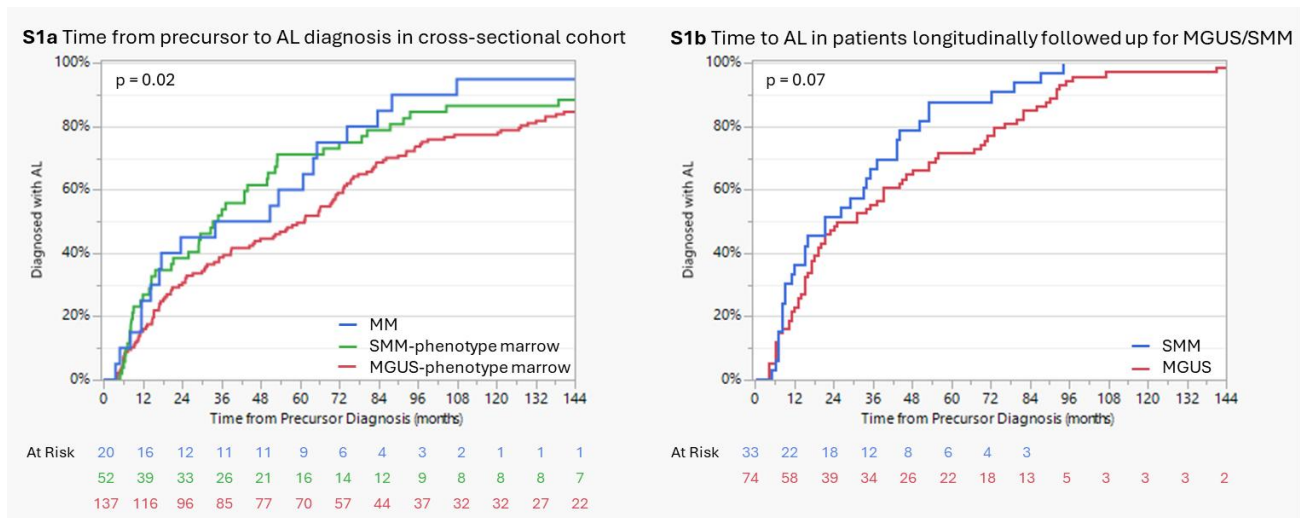


1 Supplementary Information

2 Supplemental Figures

3 Figure S1: Time from precursor diagnosis to development of AL amyloidosis according to 4 **precursor condition in cross-sectional and longitudinal cohorts**

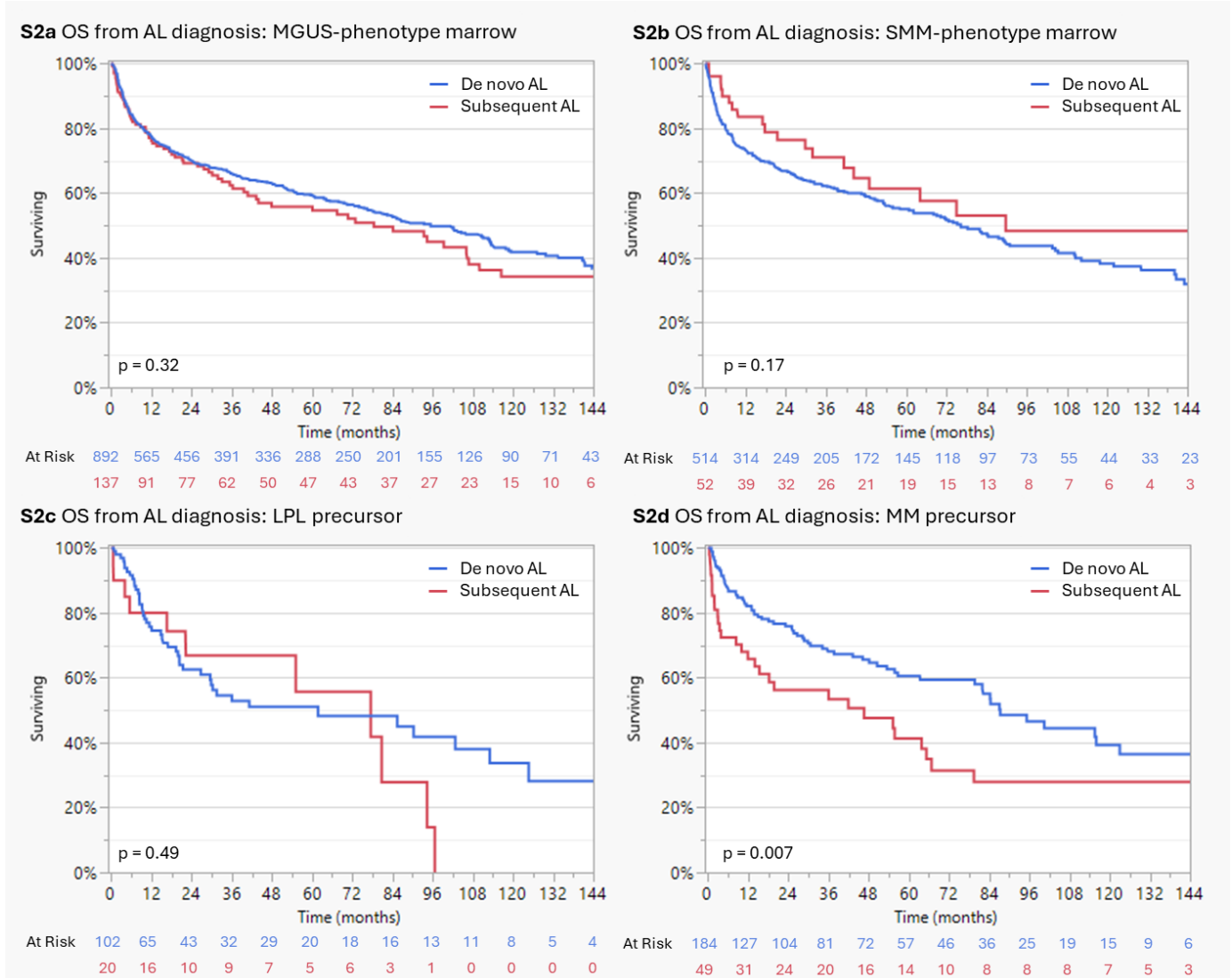


5

6 Figure S1: Time from precursor diagnosis to development of AL amyloidosis according 7 **to precursor condition and surveillance status.**

8 (A) Kaplan-Meier curves showing time from diagnosis of precursor plasma cell disorder to
9 AL amyloidosis stratified by precursor type in cross-sectional analysis of AL patients. (B)
10 Patients longitudinally followed for MGUS or SMM prior to AL diagnosis. Numbers at risk at
11 each time point are displayed below the plots.

12 **Figure S2: Overall survival from AL amyloidosis diagnosis in cross-sectional cohort**

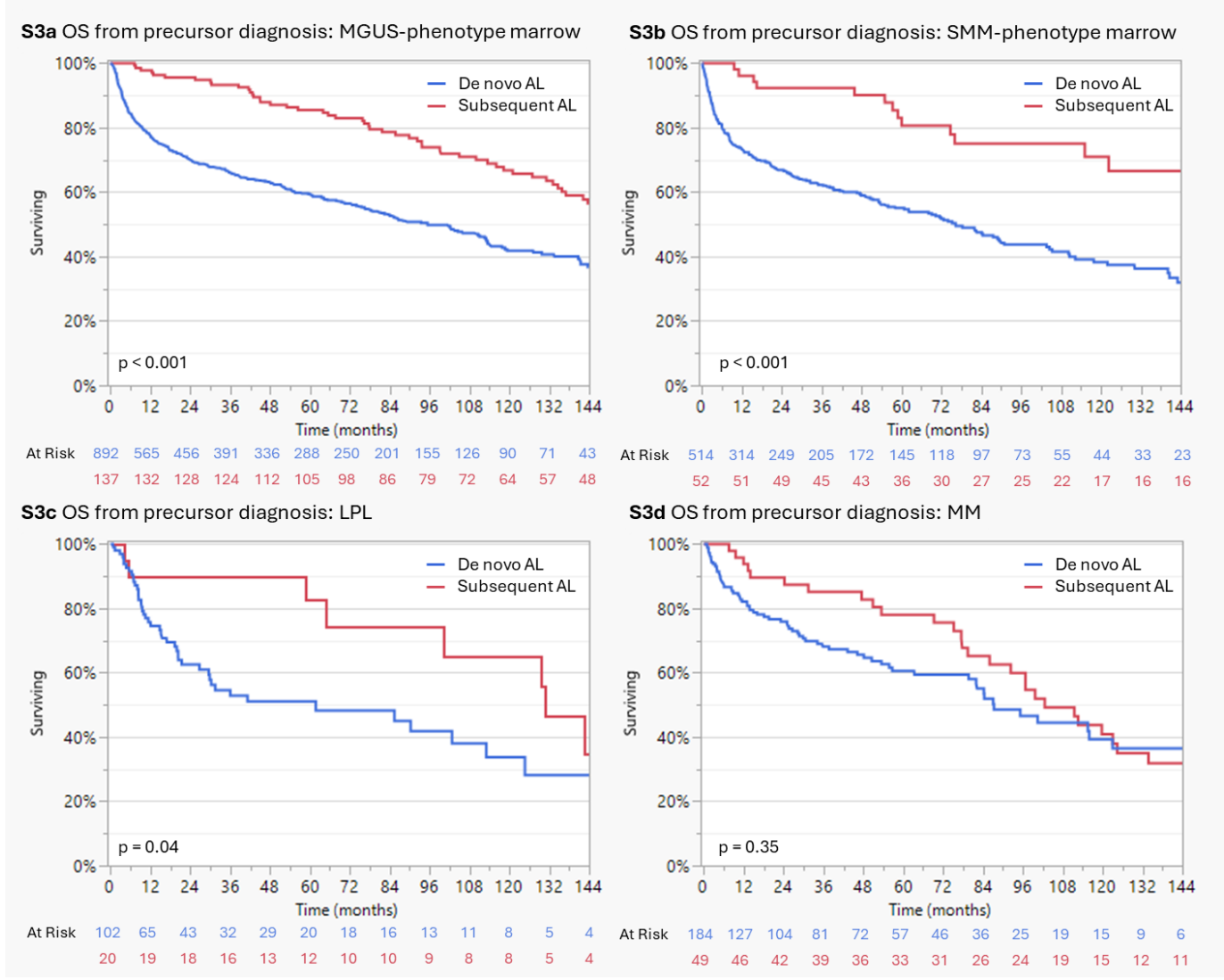


13

14 **Figure S2: Overall survival from AL amyloidosis diagnosis in cross-sectional cohort.**

15 Kaplan-Meier OS estimates from the time of AL amyloidosis diagnosis are shown stratified
 16 by precursor disease and timing of AL occurrence. Panels depict patients with (A)
 17 MGCS/MGUS, (B) smoldering multiple myeloma (SMM), (C) lymphoplasmacytic lymphoma
 18 (LPL), and (D) multiple myeloma (MM) as precursor disorders.

19 **Figure S3: Overall survival of AL patients from precursor disease diagnosis in cross-sectional**
 20 **cohort**



21
 22 **Figure S3: Overall survival from precursor disease diagnosis in cross-sectional cohort.**

23 Kaplan-Meier OS estimates measured from the time of precursor disease diagnosis are
 24 shown for patients with (A) MGCS/MGUS, (B) smoldering multiple myeloma (SMM), (C)
 25 lymphoplasmacytic lymphoma (LPL), and (D) multiple myeloma (MM).

26 Supplemental Tables

27 Table S1: Factors associated with free light chain burden >6.4 mg/dL at AL diagnosis in the
 28 **longitudinal cohort**

Risk factor for dFLC >6.4 mg/dL in
 patients at AL diagnosis

	n/N	Univariable			Multivariable ^a		
		OR	95%CI	P-value	OR	95%CI	P-value
Higher age	1950	0.99	0.98-1.01	0.38			
Female gender	717/1950	0.84	0.65-1.08	0.18			
Light chain type λ (%)	1209/1724	0.82	0.63-1.08	0.15			
Proof of t(11;14)	538/1005	1.18	0.83-1.69	0.36			
M Protein >1.5 g/dL	200/1362	1.56	1.01-2.40	0.04	1.46	0.89-2.41	0.14
Heavy chain type	1425						
No heavy chain secretion	525	Ref	Ref	Ref	Ref	Ref	Ref
IgG	631	0.60	0.44-0.82	0.001	0.38	0.26-0.57	<0.001
IgA	150	0.47	0.30-0.73	<0.001	0.35	0.21-0.60	<0.001
IgM	108	0.44	0.57-0.71	0.001	0.46	0.25-0.85	0.01
IgD	11	1.78	0.22-14.09	0.59	0.71	0.08-6.21	0.76
BMPC >5%	541/1781	3.56	2.73-4.63	<0.001	3.47	2.51-4.79	<0.001

29 ^a 1,232 events

30 Table S1: Factors associated with free light chain burden >6.4 mg/dL at AL diagnosis in
 31 **the longitudinal cohort.**

32 Univariable and multivariable logistic regression analyses were performed to identify clinical
 33 and clonal factors associated with dFLC >6.4 mg/dL at the time of AL diagnosis. Odds ratios

34 (ORs) are shown per unit increase for continuous variables. N/N represents the fulfilled
35 variable out of all available datapoints, or only available datapoints given for variables with
36 ranges. Statistically significant P values are shown in **bold**.