

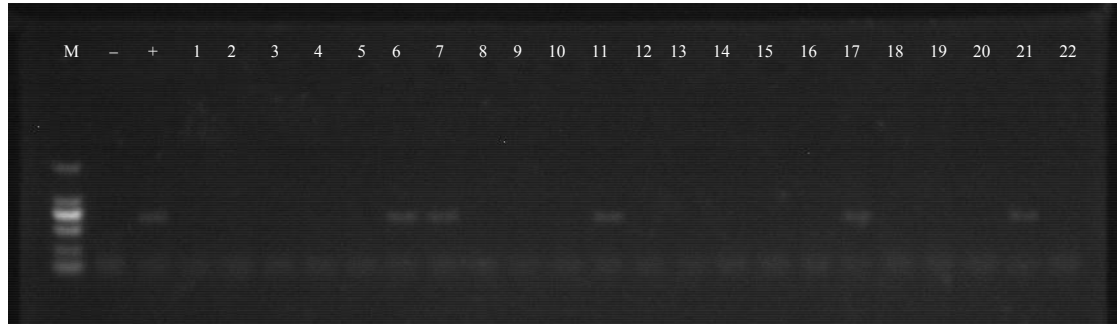
1a (C.p)



1b (S.a)



1c (T.p)

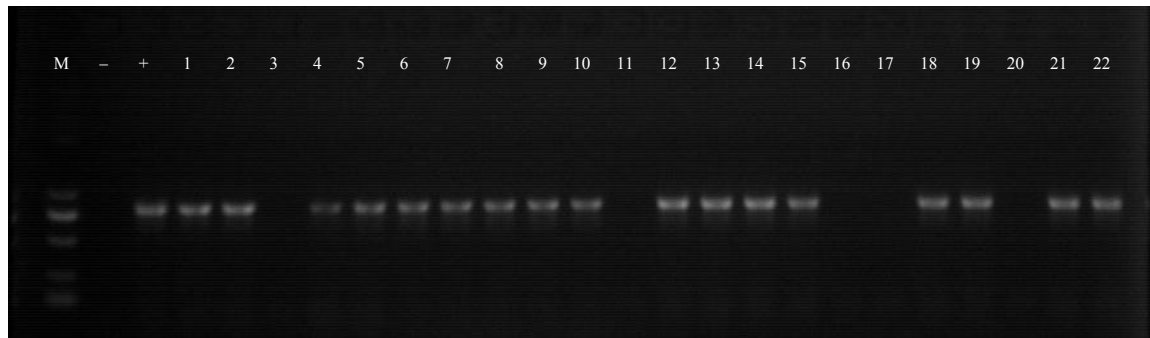


1d (E.c)



Figure. Results of PCR product gel electrophoresis. Electrophoretic analysis of PCR products amplified from four pathogenic species in goat abscess samples, M: DNA marker, +: positive control (standard strains), - : negative control (double distilled water), 1~22: abscess samples. 1a: *Corynebacterium pseudotuberculosis* ; 1b: *Staphylococcus aureus*; 1c: *Trueperella pyogenes*; 1d: *Escherichia coli*.

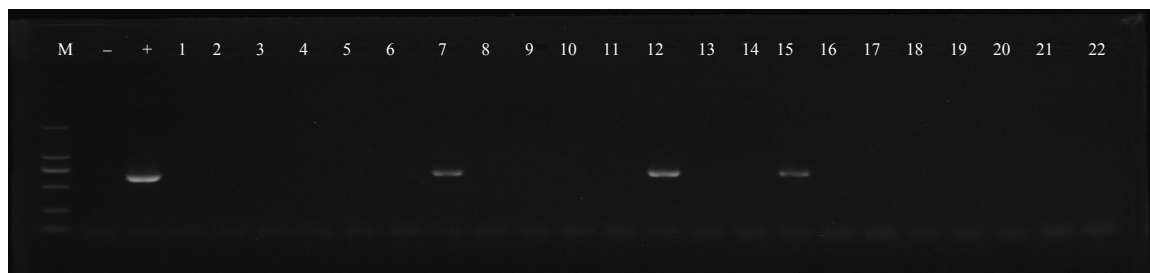
2a (C.p)



2b (S.a)



2c (T.p)



2d (E.c)

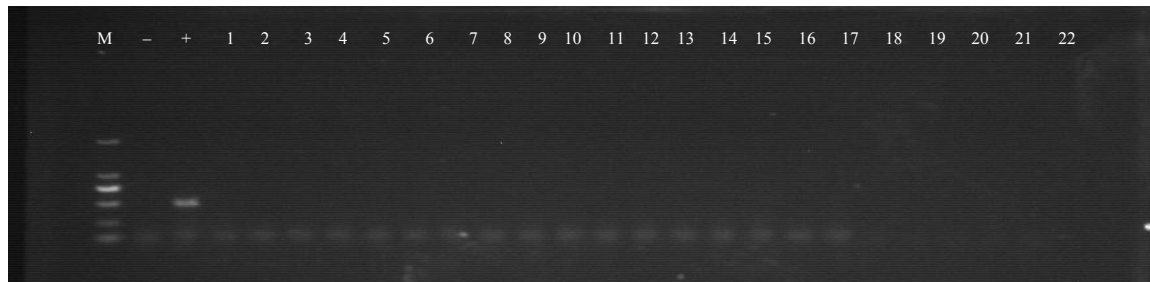
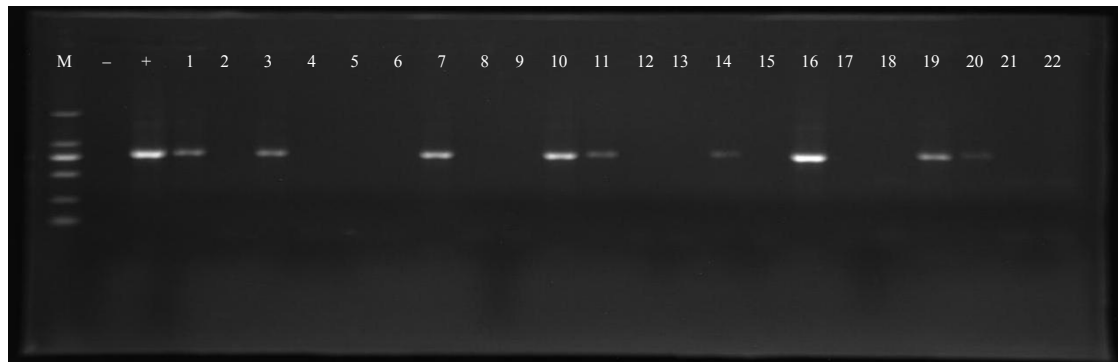
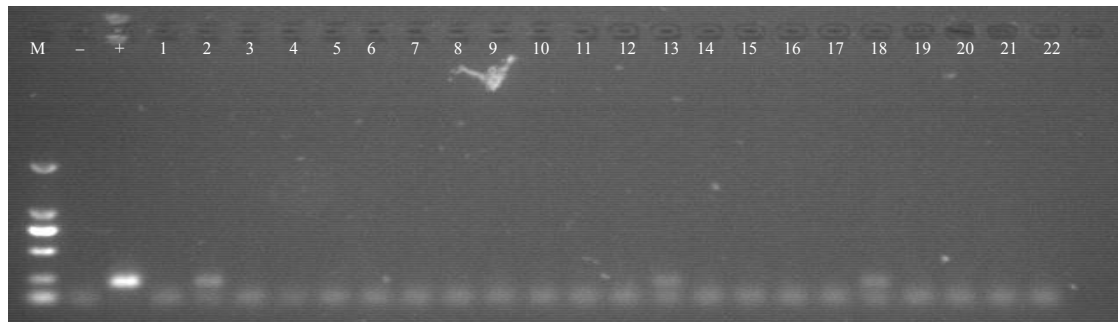


Figure. Results of PCR product gel electrophoresis. Electrophoretic analysis of PCR products amplified from four pathogenic species in goat abscess samples, M: DNA marker, +: positive control (standard strains), - : negative control (double distilled water), 1~22: abscess samples. 2a: *Corynebacterium pseudotuberculosis* ; 2b: *Staphylococcus aureus*, 2c: *Trueperella pyogenes*, 2d: *Escherichia coli*.

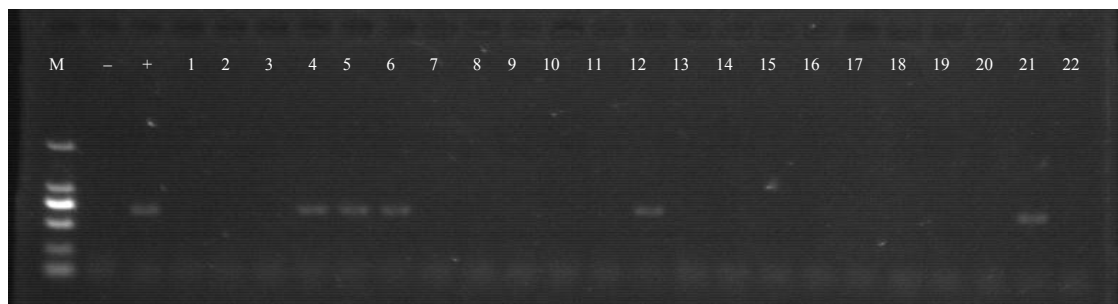
3a (C.p)



3b (S.a)



3c (T.p)



3d (E.c)

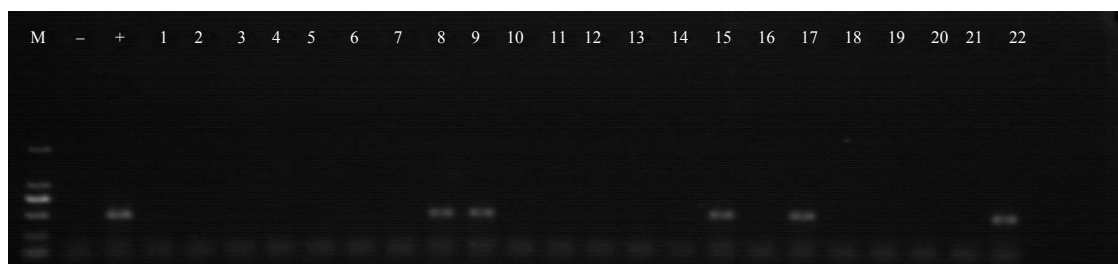
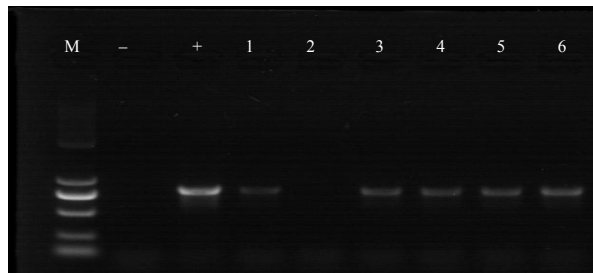
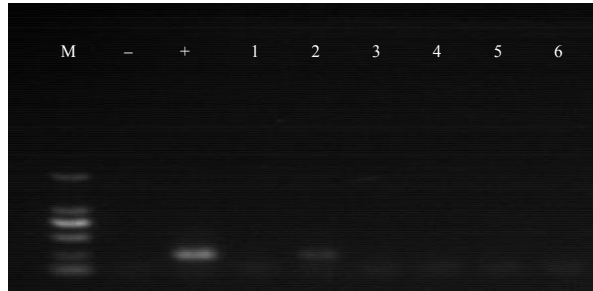


Figure. Results of PCR product gel electrophoresis. Electrophoretic analysis of PCR products amplified from four pathogenic species in goat abscess samples, M: DNA marker, +: positive control (standard strains), - : negative control (double distilled water), 1~22: abscess samples. 3a: *Corynebacterium pseudotuberculosis* ; 3b: *Staphylococcus aureus*; 3c: *Trueperella pyogenes*; 3d: *Escherichia coli*.

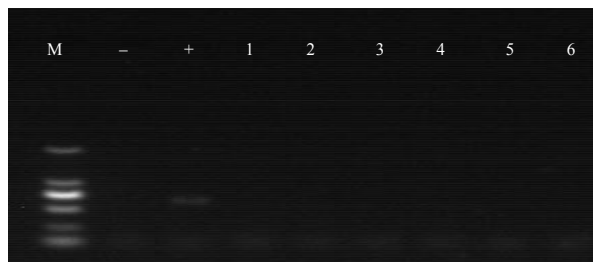
4a (C.p)



4b (S.a)



4c (T.p)



4d (E.c)

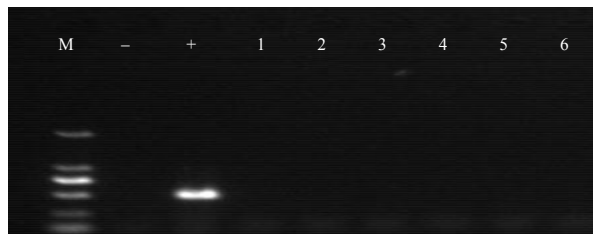


Figure. Results of PCR product gel electrophoresis. Electrophoretic analysis of PCR products amplified from four pathogenic species in goat abscess samples, M: DNA marker, +: positive control (standard strains), - : negative control (double distilled water), 1~6: abscess samples. 4a: *Corynebacterium pseudotuberculosis* ; 4b: *Staphylococcus aureus*, 4c: *Trueperella pyogenes*, 4d: *Escherichia coli*.