

# Supplementary Tables

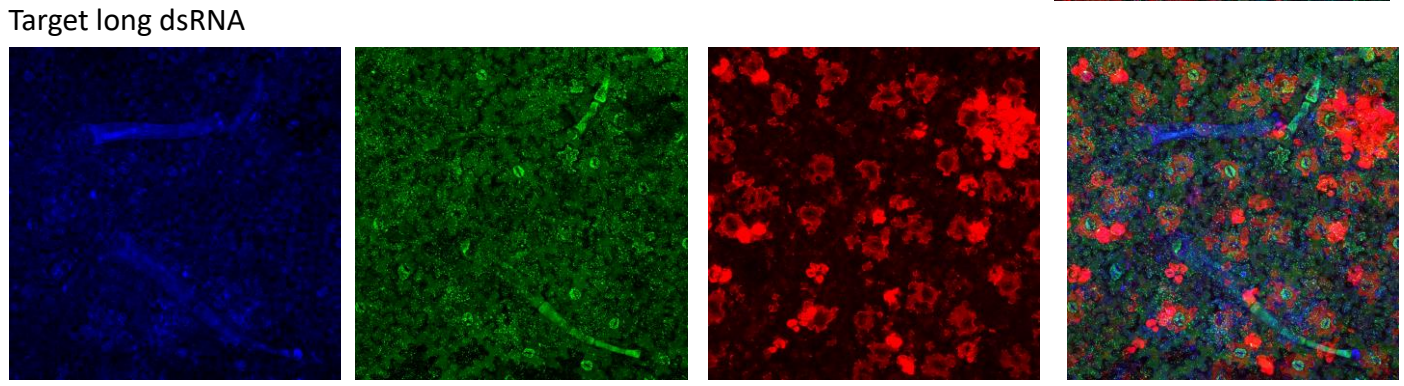
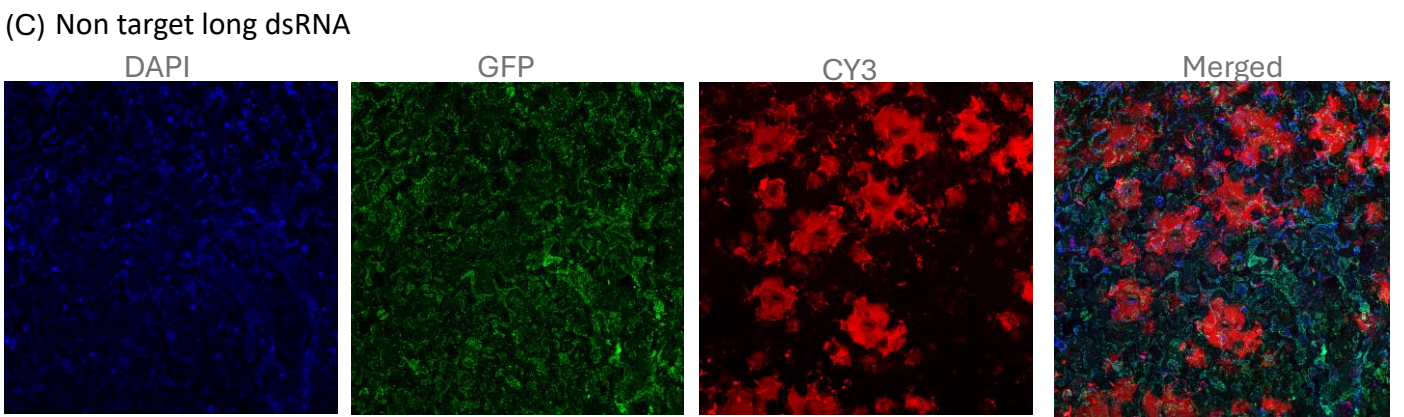
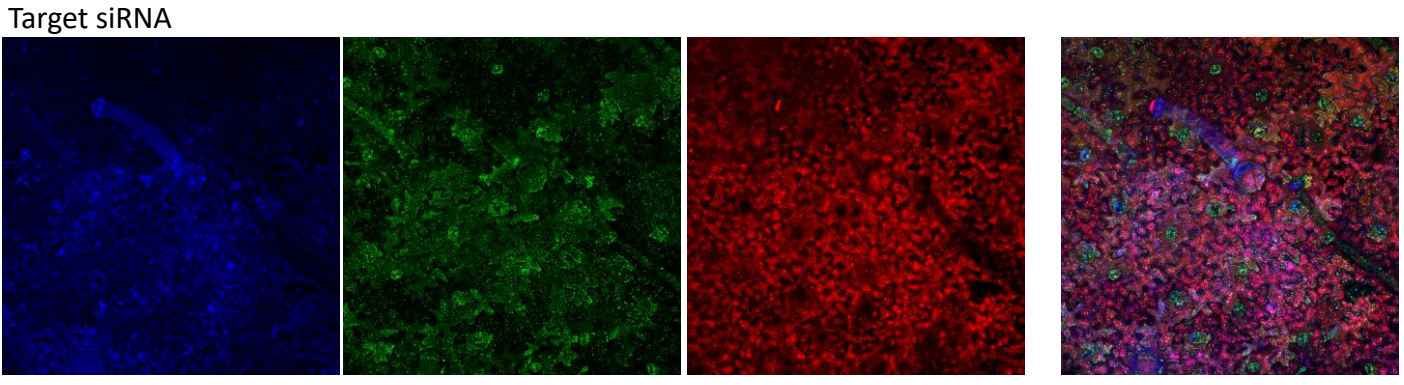
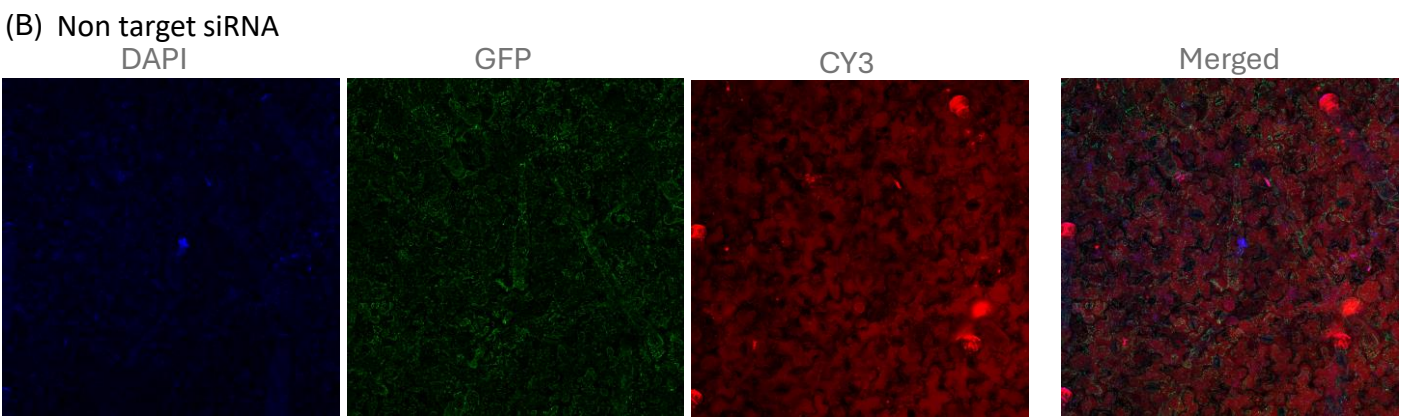
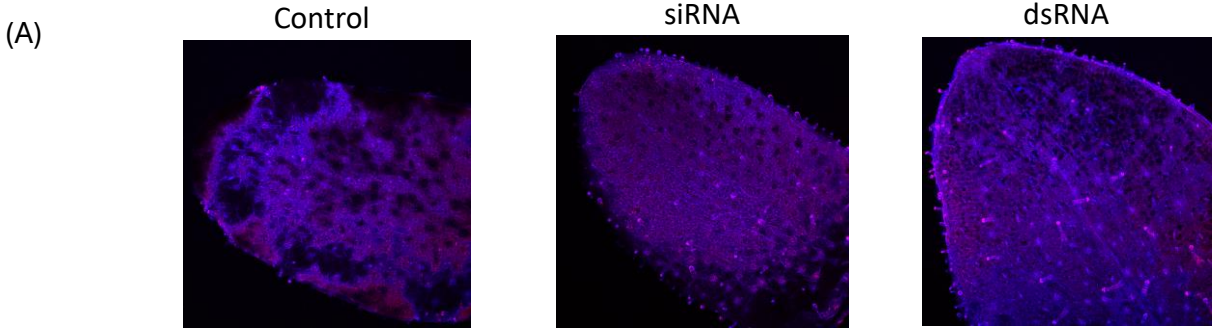
Table 1: siRNA and dsRNA

No.	Target	Length	Sequence
1	<i>GFP</i>	22	/5Phos/UUUCCGUAUGUUGCAUCACCUmU /5Phos/GGUGAUGCAACAUACGGAAAAmC
2	<i>NbChlH</i>	22	/5Phos/UUUGCCUCCA AUUCCAUGAUCmA /5Phos/AUCAUGGAAUUGGAGGCCAAAAmG
3	<i>SflAP</i>	22	UUUAGCCUCAAGCGAUCCGCUC GCGGAUCGCUUGAGGCCUAAAAU
4	<i>SflAP</i>	300	CAAUGGCUCUCCUCAACAUAUAAACGCUAUUCAAGAGCGGAUCG CUUGAGGCCUAAAAUUCGACCUCUCGCGCCACUAAUGCUGCCGA CGCCAAGUJACGACUCCAACGCCGCUCCAUUCUUUGUCACC AUCCACGCCUUGUUCUUAUCUUCUUCUCCAUUGAUAAAAACC GACAACCACGACACCUUCGGCUUCAGUGCAGGACACAGUUGAUA UGAGAAAAGAGGAUGAACGUAUGAAAACAUUUGAAAAUUGCCCG UCAGUUUUCUAUCCGGAGAGCAACUUGCUCGAAAUGGAUU
5	<i>GFP</i>	200	CCCUUAAAAUUUUAUUGCACUACUGGAAAACUACCUGUCCAUGG CCAACACUUGUCACUACUUCUCUUAUGGUGUCAAUGCUIUUU CAAGAUACCCAGAUCAUAUGAAGCGGCACGACUUCUUAAGAGC GCCAUGCCUGAGGGAUACGUGCAGGAGAGGACCAUCUUCUUA AGGACGACGGGAACUACAAGACACGU
6	<i>NbChlH</i>	348	UUGCCUCCAUAUACUCUGUGCUCUAAAGAACUAAAAAAGAUGGC UACAACAUUGAGGGGCGGCCUGAGACUUCUGCGCAAUUGAUUG AGAAGUAAUUCACGACAAAGAAGCUCAGUUCAGUAGCCCAAU CUUAACAUAGCUUACAAGAUGAACGUUAGAGAAUACCAGAAGCUA ACCCCUUAUGCUACUGCUCUUGAAGAGAACUGGGGGAAGCAC CUGGUAAUUGAACUCUGAUGGAGAAAACCUCUUGGUUAUUGG UAAACAGUAUGGUAAUGUCUUUAUCGGUGUUCAGCCCACAUUU GGAUUAGAGGGUGACCCGAUGAGACUUCUGUUCUCCAAAUCAG

Table 2: Primers used in the study

Target	Description	Primer sequences
<i>SflAP</i>	PCR for intact dsRNA amplification	CAATGGCTCCTCCTCAAC AATCCATTTGAGCAAGTTGC
<i>GFP</i>	PCR for intact dsRNA amplification	CCCTTAAATTTATTTGCACTACT ACGTGTCTTGTAGTTCCCG
<i>NbGAPDH</i>	PCR loading control & qPCR	CACTACCAACTGCCTTGAC ATGAAGCAGCTCTTCCACCT
<i>GFP</i>	PCR - Probe design	GCACTACTGGAAAACCTG CAACTTGTGGCCGAGGATG
<i>SfRPL32</i>	qPCR	CCCGTCACATGCTACCCAATGG CTCTACGATGGTCTTGCGT
<i>SflAP</i>	qPCR	CGCAGACTACGCAGTTTA CGTCATGGTTCTCCAATCTT
<i>NbChlH</i>	qPCR	GGTATGACTGAGAAGAGGAAAG GTTGGGTCTGAATCGAAGTAG

# Supplementary figure 1



# Supplementary figure 2 (*ChlH* silencing at Week 11)

Week 11

Phenotype in mature leaf



Phenotype in newly emerging leaf

