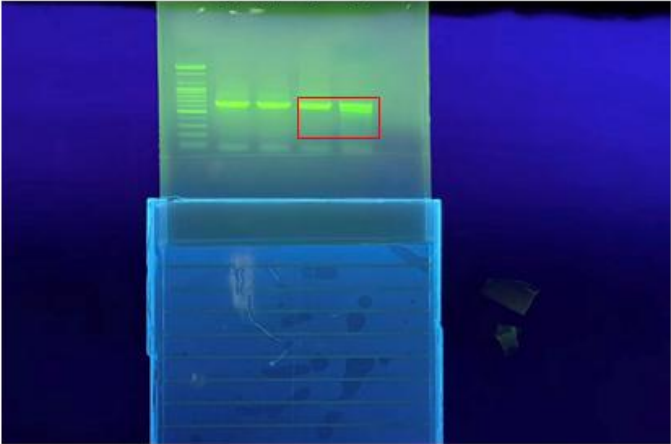


Fig1B

293T

1 2 3 4



- Lane:
- 1. 293T BR JAK1 PCR
 - 2. 293T BRJ24 JAK1 PCR
 - 3. 293T BR JAK1 PCR+ T7E1 cut
 - 4. 293T BRJ24 JAK1 PCR+ T7E1 cut

VERO

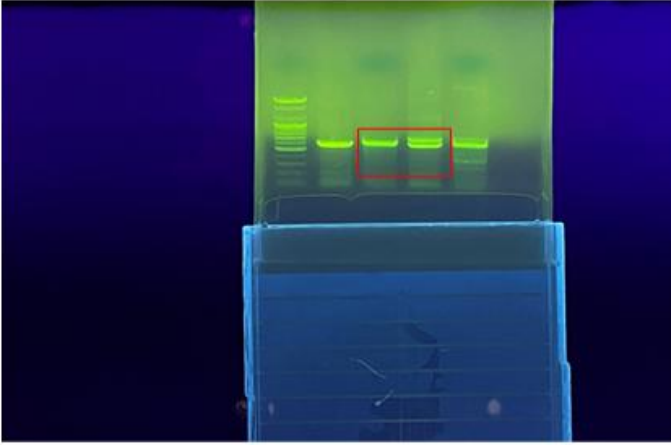
1 2 3 4



- Lane:
- 1. VERO BPR JAK1 PCR
 - 2. VERO BPR JAK1 PCR + T7E1 cut
 - 3. VERO BPRJ29 JAK1 PCR + T7E1 cut
 - 4. VERO BPRJ mix clones JAK1 PCR + T7E1 cut

MDCK

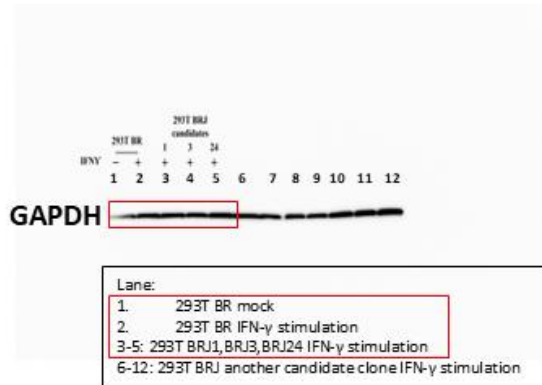
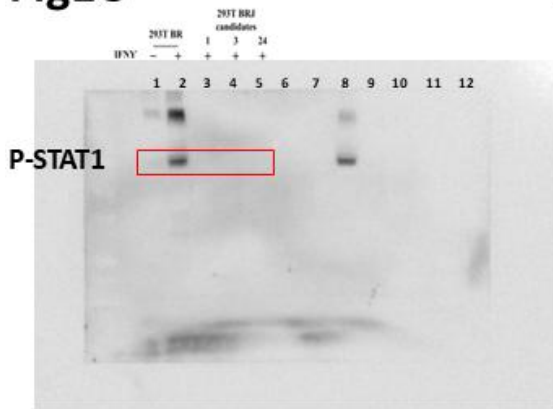
1 2 3 4



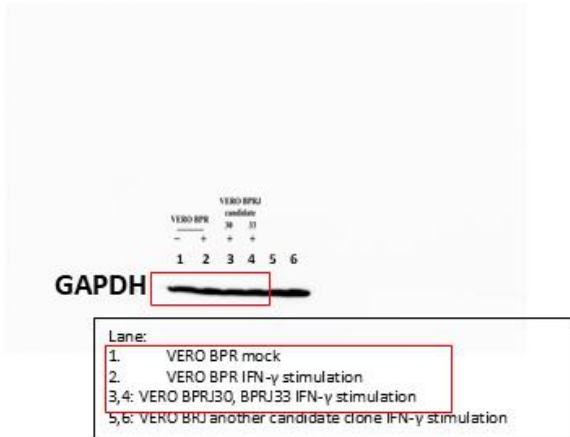
1. Lane:
- 2. MDCK BR JAK1 PCR
 - 3. MDCK BR JAK1 PCR+ T7E1 cut
 - 4. MDCK BRJ29 JAK1 PCR+ T7E1 cut
 - 5. MDCK BRJ mix clones JAK1 PCR+ T7E1 cut

Fig1C

293T



VERO



MDCK

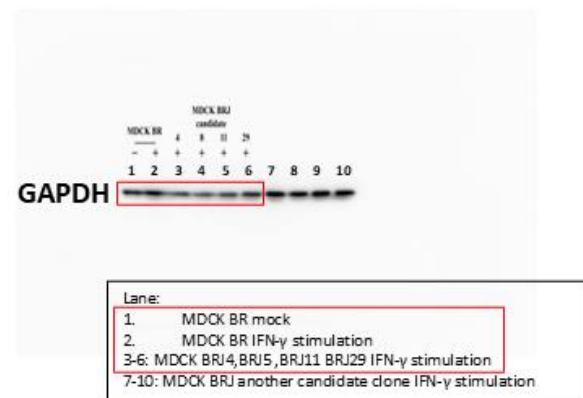
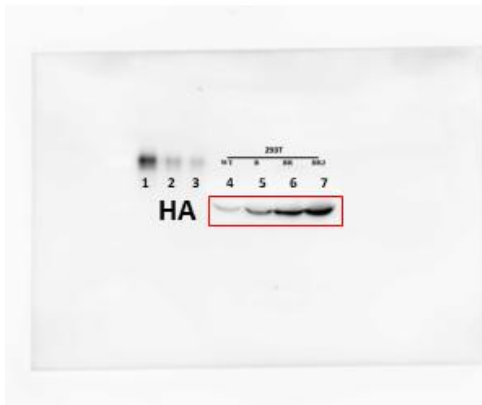


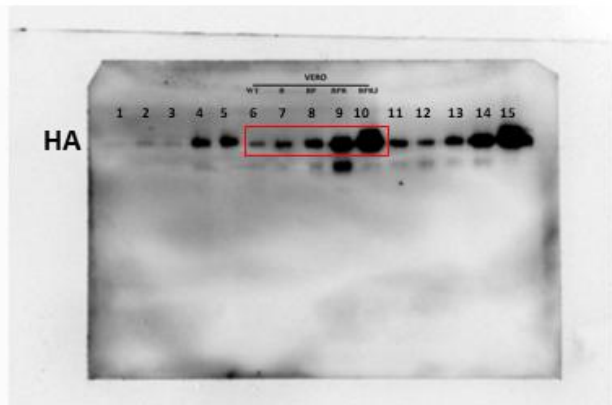
Fig2A

293T



Lane:
1-3: Recombinant H1N1 HA protein
4-7: Influenza virus(A/Brisbane/59/2007) infection
4. 293T WT (0.01 MOI)
5. 293T B (0.01 MOI)
6. 293T BR (0.01 MOI)
7. 293T BRJ (0.01 MOI)

VERO



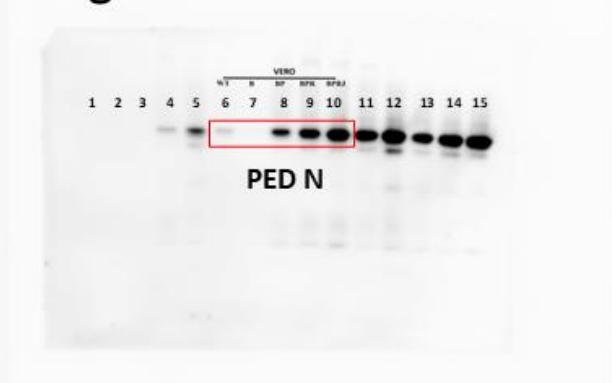
Lane:
1-5: VERO WT,B,BP,BPR,BPRJ H1N1 (A/Brisbane/59/2007) infection(0.1 MOI)
6-10: VERO WT,B,BP,BPR,BPRJ H1N1 (A/Brisbane/59/2007) infection(0.5 MOI)
11-15: VERO WT,B,BP,BPR,BPRJ H1N1 (A/Brisbane/59/2007) infection(1 MOI)

Fig2B



Lane:
1-3: Recombinant H3N2 HA protein
4-7: Influenza virus(A/brisbane/10/2007) infection
4. MDCK WT (0.001 MOI)
5. MDCK B (0.001 MOI)
6. MDCK BR (0.001 MOI)
7. MDCK BRJ (0.001 MOI)

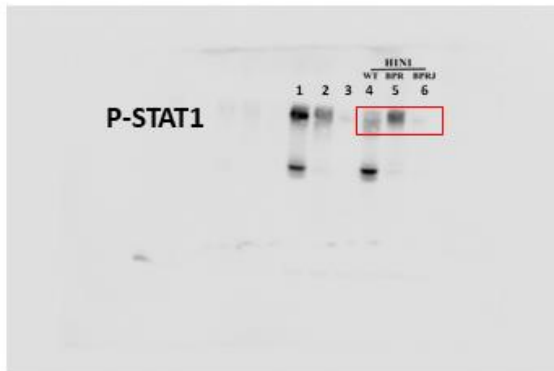
Fig2C



Lane:
1-5: VERO WT,B,BP,BPR,BPRJ PEDV (CV777) infection (0.5μl infection)
6-10: VERO WT,B,BP,BPR,BPRJ H1N1 (A/Brisbane/59/2007) infection(1 μl infection)
11-15: VERO WT,B,BP,BPR,BPRJ H1N1 (A/Brisbane/59/2007) infection (2 μl infection)

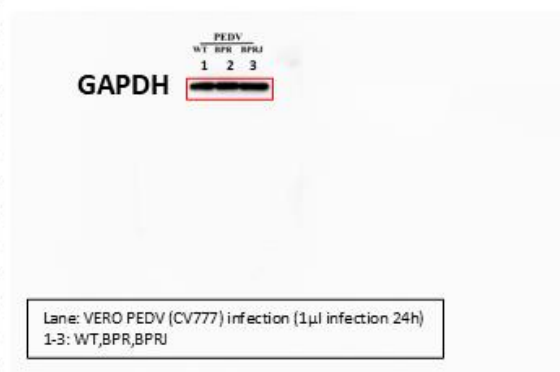
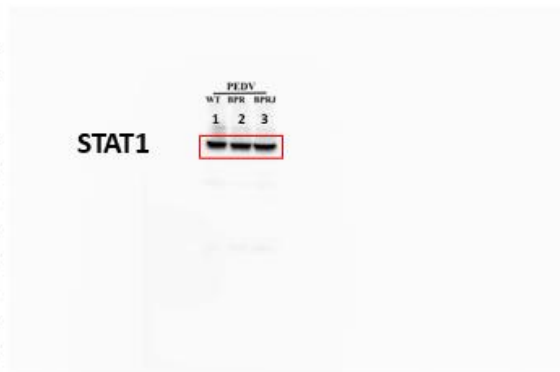
Fig2D

H1N1



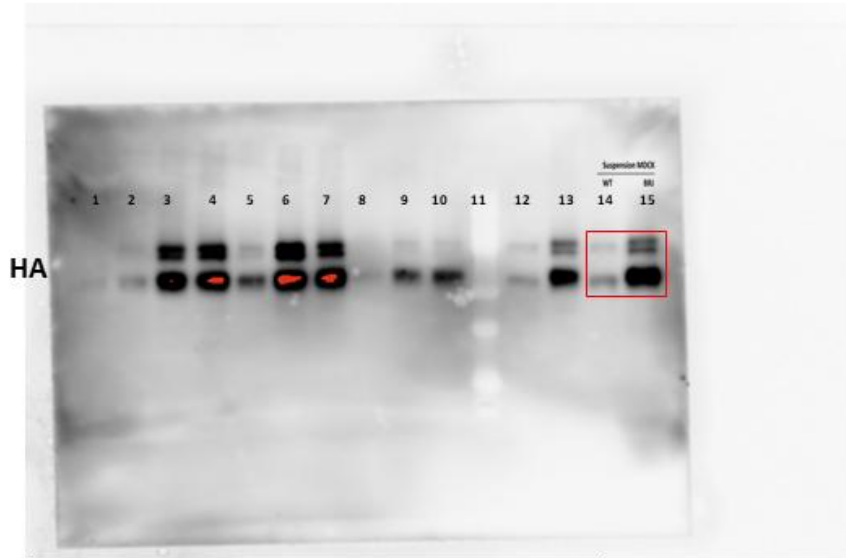
Lane: VERO Influenza virus(A/Brisbane/59/2007) infection
1-3: WT,BPR,BRPJ (0.01MOI 24h)
4-6: WT,BPR,BRPJ (0.1MOI 24h)

PEDV



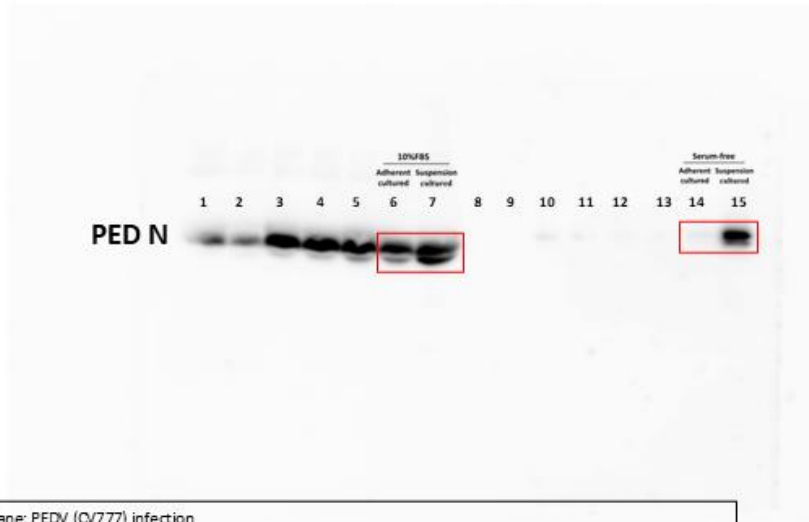
Lane: VERO PEDV (CV777) infection (1μl infection 24h)
1-3: WT,BPR,BPRJ

Fig5B



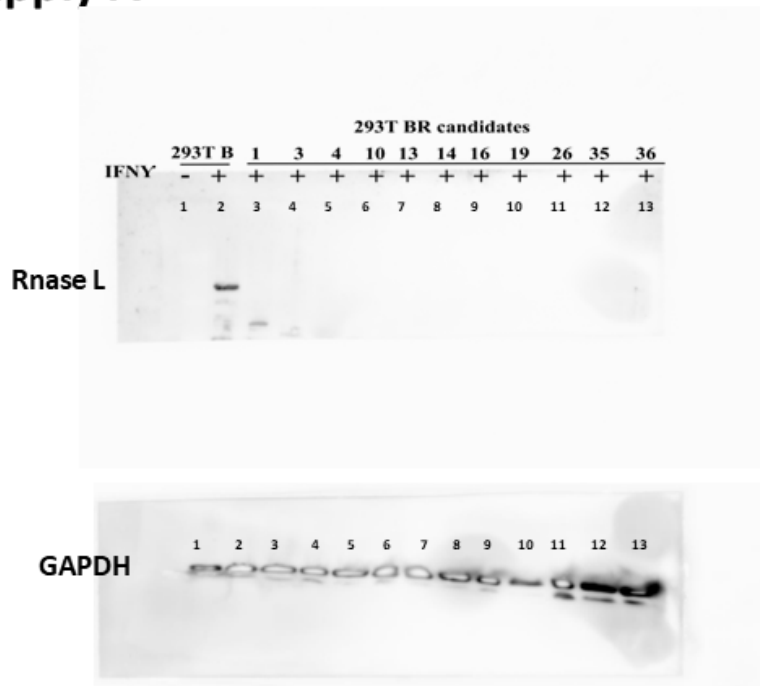
Lane: Influenza virus(A/brisbane/10/2007) infection
 1: Adherent MDCK BRJ sample (0.1MOI)
 2-4: suspension MDCK BRJ 48h,72h,96h sample (0.1MOI)
 5-7: suspension MDCK BRJ 48h,72h,96h sample (0.05MOI)
 8-10: suspension MDCK BRJ 48h,72h,96h sample (0.01MOI)
 11: Ladder
 12,13: suspension MDCK WT,BRJ 72h sample (0.05MOI)
 14,15: suspension MDCK WT,BRJ 96h sample (0.05MOI)

Fig5D



Lane: PEDV (CV777) infection
 1-7: with 10% FBS virus production media
 1-5: 0.0016 μ l, 0.008 μ l, 0.04 μ l, 0.2 μ l, 1 μ l virus infection to adherent VERO BPR
 6: 5 μ l virus infection to adherent VERO BPR
 7: 5 μ l virus infection to suspension VERO BPR
 8: Empty
 9-15: with serum virus production media
 9-13: 0.0016 μ l, 0.008 μ l, 0.04 μ l, 0.2 μ l, 1 μ l virus infection to adherent VERO BPR
 14: 5 μ l virus infection to adherent VERO BPR
 15: 5 μ l virus infection to suspension VERO BPR

Fig Supply A



Lane:
 1: 293T B mock
 2: 293T B IFN- γ stimulation
 3-13: 293T BR candidates clone IFN- γ stimulation

Fig Supply D

