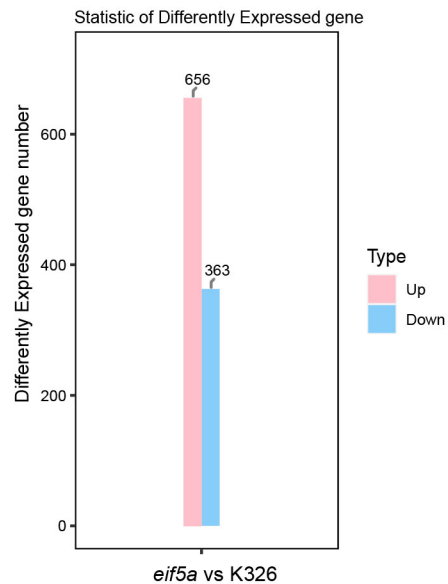


A

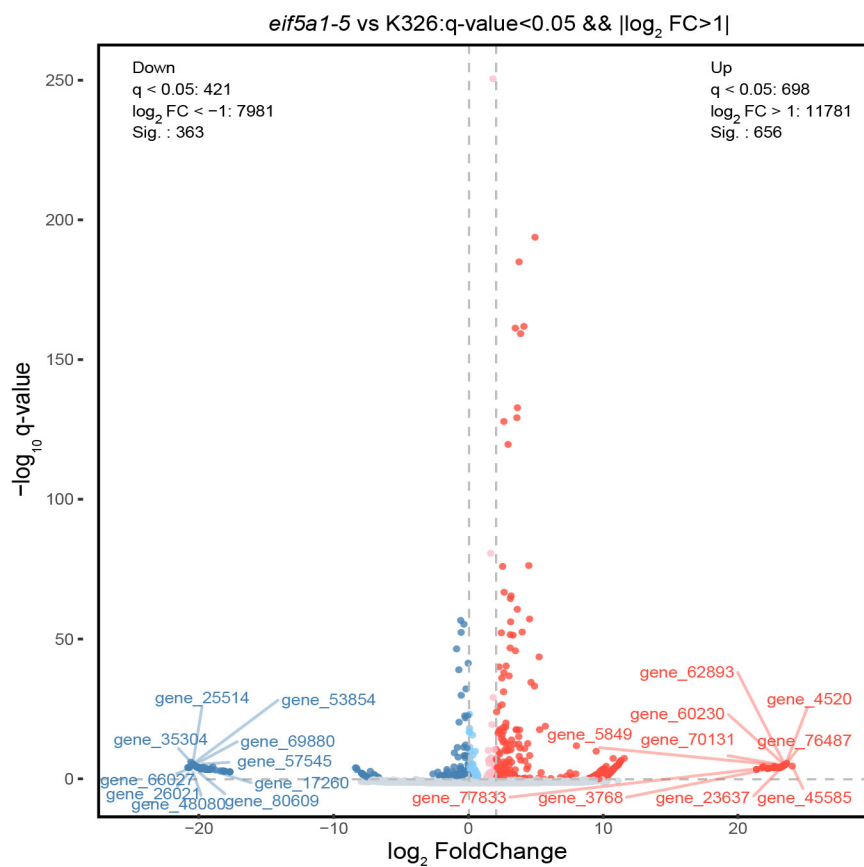
<i>Nicotiana benthamiana</i> eIF5A	1	S	K	T	Y	P	Q	Q	A	G	T	I	R	K	N	G	Y	I	V	I	K	R	P	C	K	V	V	E	V	S	T	S	K	T	G	K	H	G	H	A	K	C	H	F	V	A	I	D	I	F	N	G	K	K	L	E	D	I	V	P	S	S	H	N	C	D	V	P	H	V	70		
<i>Capsicum annuum</i> eIF5A	1	S	K	T	Y	P	Q	Q	A	G	T	I	R	K	N	G	Y	I	V	I	K	R	P	C	K	V	V	E	V	S	T	S	K	T	G	K	H	G	H	A	K	C	H	F	V	A	I	D	I	F	N	G	K	K	L	E	D	I	V	P	S	S	H	N	C	D	V	P	H	V	70		
<i>Solanum verrucosum</i> eIF5A	1	S	K	T	Y	P	Q	Q	A	G	T	I	R	K	N	G	Y	I	V	I	K	R	P	C	K	V	V	E	V	S	T	S	K	T	G	K	H	G	H	A	K	C	H	F	V	A	I	D	I	F	N	G	K	K	L	E	D	I	V	P	S	S	H	N	C	D	V	P	H	V	70		
<i>Solanum lycopersicum</i> eIF5A	1	S	K	T	Y	P	Q	Q	A	G	T	I	R	K	N	G	Y	I	V	I	K	R	P	C	K	V	V	E	V	S	T	S	K	T	G	K	H	G	H	A	K	C	H	F	V	A	I	D	I	F	N	G	K	K	L	E	D	I	V	P	S	S	H	N	C	D	V	P	H	V	70		
<i>Nicotiana tabacum</i> eIF5A	1	S	K	T	Y	P	Q	Q	A	G	T	I	R	K	N	G	Y	I	V	I	K	R	P	C	K	V	V	E	V	S	T	S	K	T	G	K	H	G	H	A	K	C	H	F	V	A	I	D	I	F	N	G	K	K	L	E	D	I	V	P	S	S	H	N	C	D	V	P	H	V	70		
<i>Nicotiana attenuata</i> eIF5A	1	S	K	T	Y	P	Q	Q	A	G	T	I	R	K	N	G	Y	I	V	I	K	R	P	C	K	V	V	E	V	S	T	S	K	T	G	K	H	G	H	A	K	C	H	F	V	A	I	D	I	F	N	G	K	K	L	E	D	I	V	P	S	S	H	N	C	D	V	P	H	V	70		
<i>Salvia miltiorrhiza</i> eIF5A	1	S	K	T	Y	P	Q	Q	A	G	T	I	R	K	N	G	Y	I	V	I	K	R	P	C	K	V	V	E	V	S	T	S	K	T	G	K	H	G	H	A	K	C	H	F	V	A	I	D	I	F	N	G	K	K	L	E	D	I	V	P	S	S	H	N	C	D	V	P	H	V	70		
<i>Quercus robur</i> eIF5A	1	S	K	T	Y	P	Q	Q	A	G	T	I	R	K	N	G	Y	I	V	I	K	R	P	C	K	V	V	E	V	S	T	S	K	T	G	K	H	G	H	A	K	C	H	F	V	A	I	D	I	F	N	G	K	K	L	E	D	I	V	P	S	S	H	N	C	D	V	P	H	V	70		
<i>Salvia hispanica</i> eIF5A	1	S	K	T	Y	P	Q	Q	A	G	T	I	R	K	N	G	H	L	V	I	K	R	P	C	K	V	V	E	V	S	T	S	K	T	G	K	H	G	H	A	K	C	H	F	V	A	I	D	I	F	N	G	K	K	L	E	D	I	V	P	S	S	H	N	C	D	V	P	H	V	70		
<i>Pyrus bretschneideri</i> eIF5A	1	S	K	T	Y	P	Q	Q	A	G	T	I	R	K	N	G	Y	I	V	I	K	A	R	P	C	K	V	V	E	V	S	T	S	K	T	G	K	H	G	H	A	K	C	H	F	V	A	I	D	I	F	N	G	K	K	L	E	D	I	V	P	S	S	H	N	C	D	V	P	H	V	70	
<i>Mangifera indica</i> eIF5A	1	S	K	T	F	P	Q	Q	A	G	T	I	R	K	N	G	Y	I	V	I	K	A	R	P	C	K	V	V	E	V	S	T	S	K	T	G	K	H	G	H	A	K	C	H	F	V	G	I	D	I	F	T	G	K	K	L	E	D	I	V	P	S	S	H	N	C	D	V	P	H	V	70	
<i>Impatiens glandulifera</i> eIF5A	1	S	K	T	Y	P	Q	Q	A	G	T	I	R	K	G	G	H	I	C	I	K	N	R	P	C	K	V	V	E	V	S	T	S	K	T	G	K	H	G	H	A	K	C	H	F	V	A	I	D	I	F	T	A	K	K	L	E	D	I	V	P	S	S	H	N	C	D	V	P	H	V	70	
<i>Populus nigra</i> eIF5A	1	S	K	T	Y	P	Q	Q	A	G	T	I	R	K	N	G	Y	I	V	I	K	N	R	P	C	K	V	V	E	V	S	T	S	K	T	G	K	H	G	H	A	K	C	H	F	V	G	I	D	I	F	N	G	K	K	L	E	D	I	V	P	S	S	H	N	C	D	V	P	H	V	70	
<i>Vicia villosa</i> eIF5A	1	S	K	T	Y	P	Q	Q	A	G	T	I	R	K	N	G	Y	I	V	I	K	R	P	C	K	V	V	E	V	S	T	S	K	T	G	K	H	G	H	A	K	C	H	F	V	A	I	D	I	F	N	G	K	K	L	E	D	I	V	P	S	S	H	N	C	D	V	P	H	V	70		
<i>Malus ioensis cultivar</i> eIF5A	1	S	K	T	Y	P	Q	Q	A	G	T	I	R	K	N	G	Y	I	V	I	K	A	R	P	C	K	V	V	E	V	S	T	S	K	T	G	K	H	G	H	A	K	C	H	F	V	A	I	D	I	F	N	G	K	K	L	E	D	I	V	P	S	S	H	N	C	D	V	P	H	V	70	
<i>Trifolium pratense</i> eIF5A	1	S	K	T	Y	P	Q	Q	A	G	T	I	R	K	N	G	Y	I	V	I	K	R	P	Y	K	V	V	E	V	S	T	S	K	T	G	K	H	G	H	A	K	C	H	F	V	A	I	D	I	F	N	G	K	K	L	E	D	I	V	P	S	S	H	N	C	D	V	P	H	V	70		
<i>Helianthus annuus</i> eIF5A	1	S	K	T	Y	P	Q	Q	A	G	T	I	R	K	N	G	Y	I	V	I	K	N	A	R	P	C	K	V	V	E	V	S	T	S	K	T	G	K	H	G	H	A	K	C	H	F	V	A	I	D	I	F	N	G	K	K	L	E	D	I	V	P	S	S	H	N	C	D	V	P	H	V	70
<i>Malus domestica</i> eIF5A	1	S	K	T	Y	P	Q	Q	A	G	T	I	R	K	N	G	Y	I	V	I	K	A	R	P	C	K	V	V	E	V	S	T	S	K	T	G	K	H	G	H	A	K	C	H	F	V	A	I	D	I	F	N	G	K	K	L	E	D	I	V	P	S	S	H	N	C	D	V	P	H	V	70	
<i>Cynara cardunculus</i> var. <i>scolym</i> eIF5A	1	S	K	T	F	P	Q	Q	A	G	T	I	R	K	N	G	Y	I	V	I	K	N	R	P	C	K	V	V	E	V	S	T	S	K	T	G	K	H	G	H	A	K	C	H	F	V	G	I	D	V	F	T	G	K	K	L	E	D	I	V	P	S	S	H	N	C	D	V	P	H	V	70	

<i>Nicotiana benthamiana</i> eIF5A	71	N	R	T	D	Y	Q	L	I	D	I	S	E	D	G	F	V	S	L	L	T	E	N	G	N	T	K	D	D	L	R	L	P	T	D	D	T	L	L	S	O	V	K	G	G	F	E	D	G	K	D	L	V	L	S	V	M	S	A	M	G	E	E	O	I	134
<i>Capsicum annuum</i> eIF5A	71	N	R	T	D	Y	Q	L	I	D	I	S	E	D	G	F	V	S	L	L	T	E	N	G	N	T	K	D	D	L	R	L	P	T	D	D	T	L	L	S	O	V	K	G	G	F	E	D	G	K	D	L	V	L	S	V	M	S	A	M	G	E	E	O	I	134
<i>Solanum verrucosum</i> eIF5A	71	N	R	T	D	Y	Q	L	I	D	I	S	E	D	G	F	V	S	L	L	T	E	N	G	N	T	K	D	D	L	R	L	P	T	D	D	A	L	L	T	O	V	K	G	G	F	E	D	G	K	D	L	V	L	S	V	M	S	A	M	G	E	E	O	I	134
<i>Solanum lycopersicum</i> eIF5A	71	N	R	T	D	Y	Q	L	I	D	I	S	E	D	G	F	V	S	L	L	T	E	N	G	N	T	K	D	D	L	R	L	P	T	D	D	T	L	L	N	O	V	K	G	G	F	E	D	G	K	D	L	V	L	S	V	M	S	A	M	G	E	E	O	I	134
<i>Nicotiana tabacum</i> eIF5A	71	N	R	T	D	Y	Q	L	I	D	I	S	E	D	G	F	V	S	L	L	T	E	S	G	N	T	K	D	D	L	R	L	P	T	D	E	A	L	L	K	O	V	K	D	G	F	O	D	G	K	D	L	V	S	V	M	S	A	M	G	E	E	O	I	134	
<i>Nicotiana attenuata</i> eIF5A	71	N	R	T	D	Y	Q	L	I	D	I	S	E	D	G	F	V	S	L	L	T	E	N	G	N	T	K	D	D	L	R	L	P	T	D	D	A	L	L	N	O	V	K	G	G	F	E	D	G	K	D	L	V	L	S	V	M	S	A	M	G	E	E	O	I	134
<i>Salvia miltiorrhiza</i> eIF5A	71	N	R	T	D	Y	Q	L	I	D	I	S	E	D	G	F	V	S	L	L	T	E	N	G	N	T	K	D	D	L	R	L	P	T	D	D	S	L	L	G	P	I	K	S	G	F	A	D	G	K	D	L	V	V	S	V	M	S	A	M	G	E	E	O	I	134
<i>Quercus robur</i> eIF5A	71	N	R	T	D	Y	Q	L	I	D	I	S	E	D	G	F	V	S	L	L	T	E	N	G	N	T	K	D	D	L	R	L	P	T	D	D	S	L	L	S	O	I	K	D	G	F	A	D	G	K	D	L	V	V	T	V	M	S	A	M	G	E	E	O	I	134
<i>Salvia hispanica</i> eIF5A	71	N	R	T	D	Y	Q	L	I	D	I	S	E	D	G	F	V	S	L	L	T	E	N	G	N	T	K	D	D	L	R	L	P	T	D	D	T	L	L	G	O	I	K	S	G	F	E	D	G	K	D	L	V	V	S	V	M	S	A	M	G	E	E	O	I	134
<i>Pyrus bretschneideri</i> eIF5A	71	N	R	T	D	Y	Q	L	I	D	I	S	E	D	G	F	V	S	L	L	T	E	N	G	N	T	K	D	D	L	R	L	P	T	D	D	S	L	L	T	O	I	K	D	G	F	N	D	G	K	D	L	V	V	T	V	M	S	A	M	G	E	E	O	I	134
<i>Mangifera indica</i> eIF5A	71	N	R	T	D	Y	Q	L	I	D	I	S	E	D	G	F	V	S	L	L	T	E	N	G	N	T	K	D	D	L	R	L	P	T	D	D	N	L	L	T	O	I	K	D	G	F	A	D	G	K	D	L	V	V	T	V	M	S	A	M	G	E	E	O	I	134
<i>Impatiens glandulifera</i> eIF5A	71	N	R	T	D	Y	Q	L	I	D	I	S	E	D	G	F	V	S	L	L	T	E	N	G	N	T	K	D	D	L	R	L	P	T	D	D	A	L	L	T	O	I	K	D	G	F	F	G	K	D	L	V	V	T	V	M	S	A	M	G	E	E	O	I	134	
<i>Populus nigra</i> eIF5A	71	N	R	T	D	Y	Q	L	I	D	I	S	E	D	G	F	V	S	L	L	T	E	N	G	N	T	K	D	D	L	R	L	P	T	D	D	S	L	L	T	P	I	K	D	G	F	E	D	G	K	D	L	V	V	T	V	M	S	A	M	G	E	E	O	I	134
<i>Vicia villosa</i> eIF5A	71	N	R	T	D	Y	Q	L	I	D	I	S	E	D	G	F	V	S	L	L	T	D	N	G	S	T	K	D	D	L	K	L	P	T	D																															

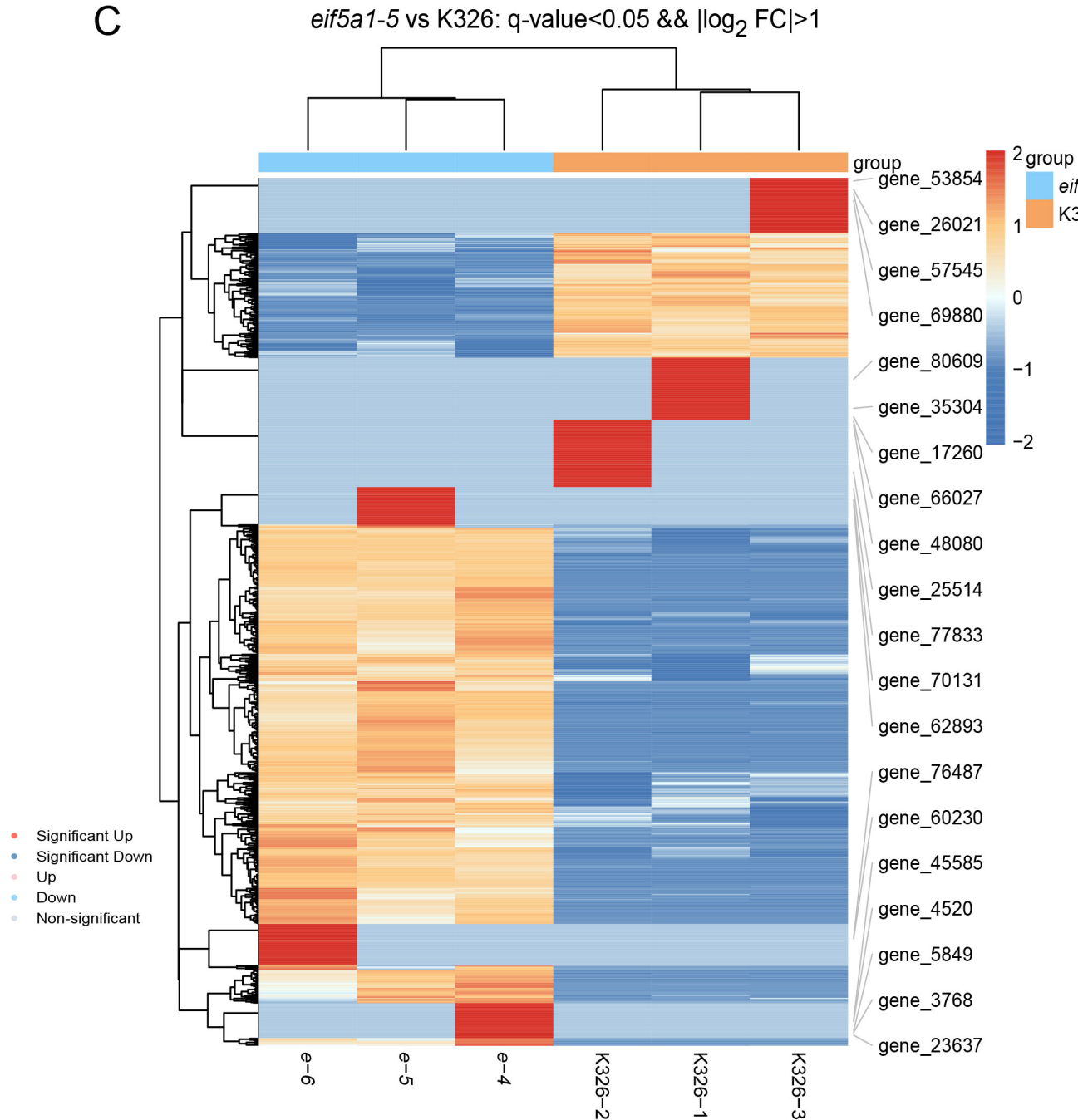
A



B

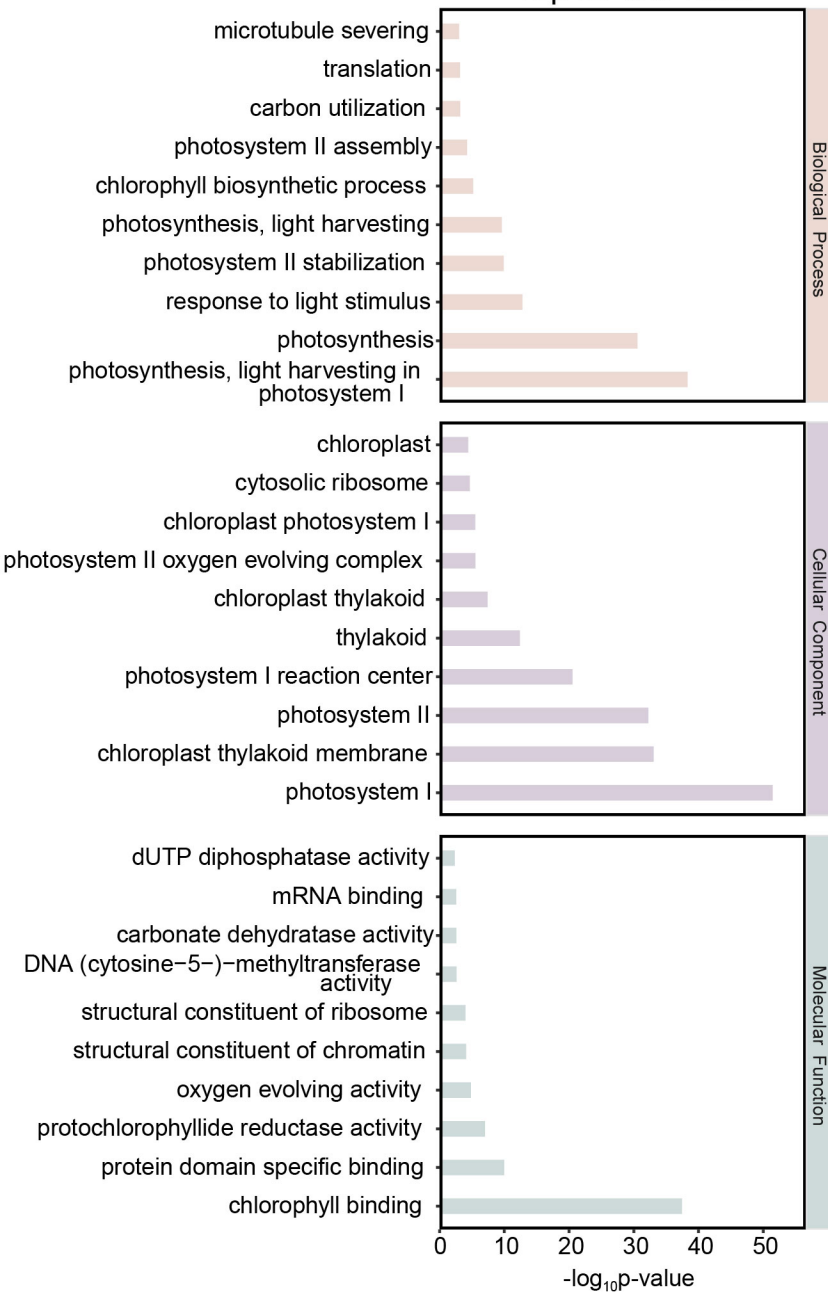


C



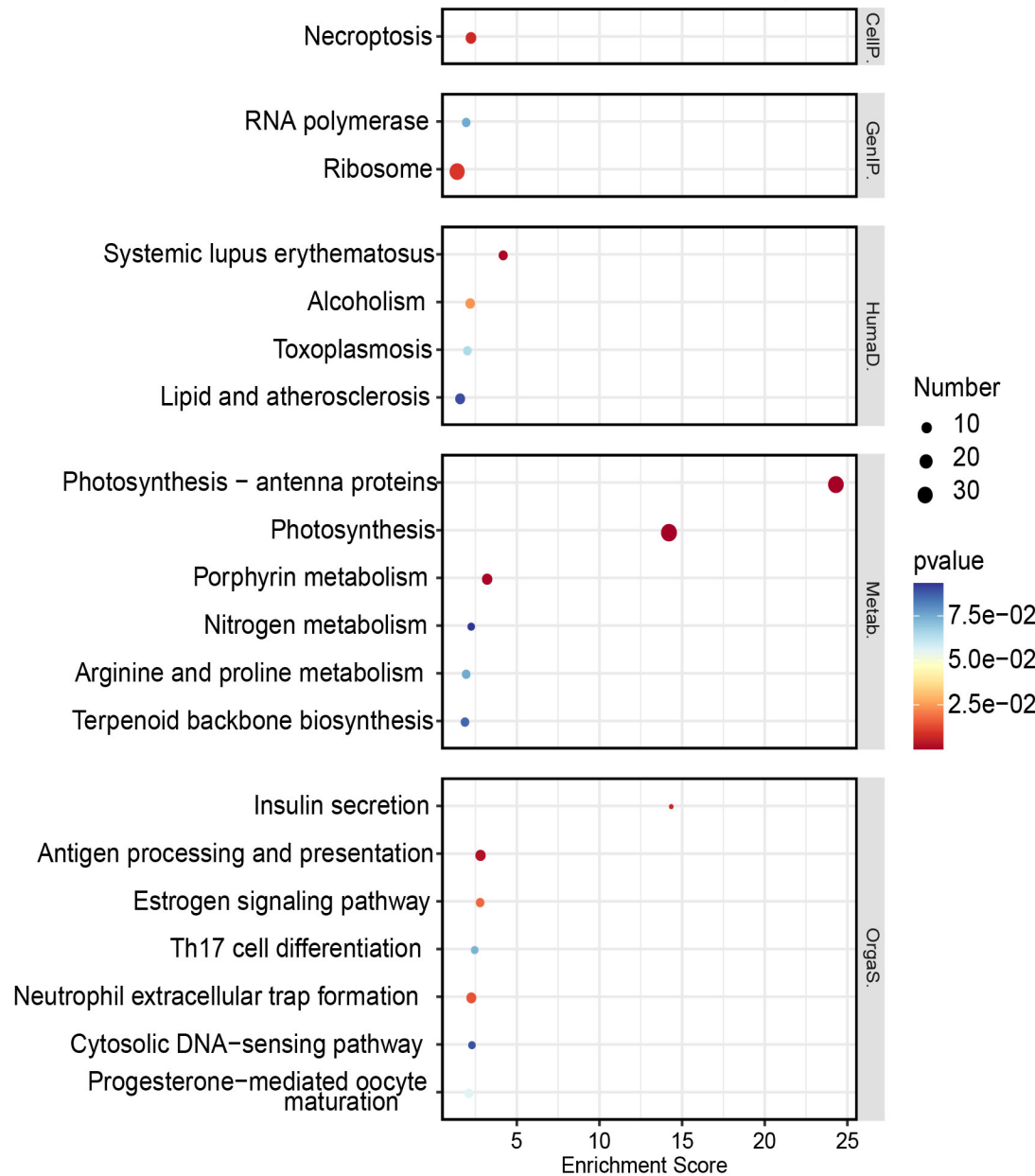
A

eif5a1-5 vs K326
Top 30 GO Term

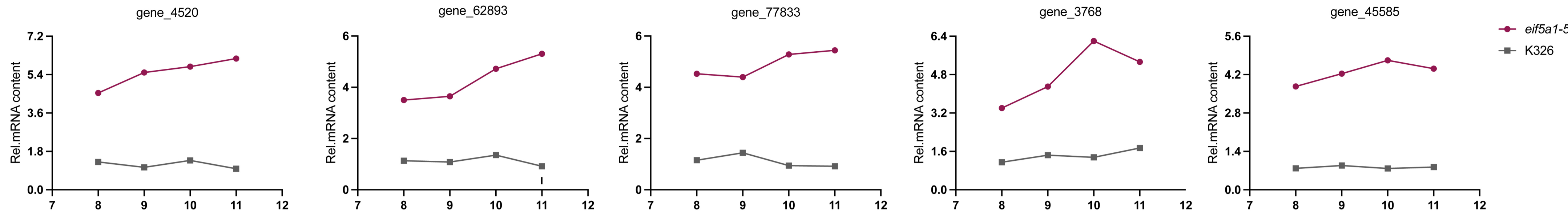


B

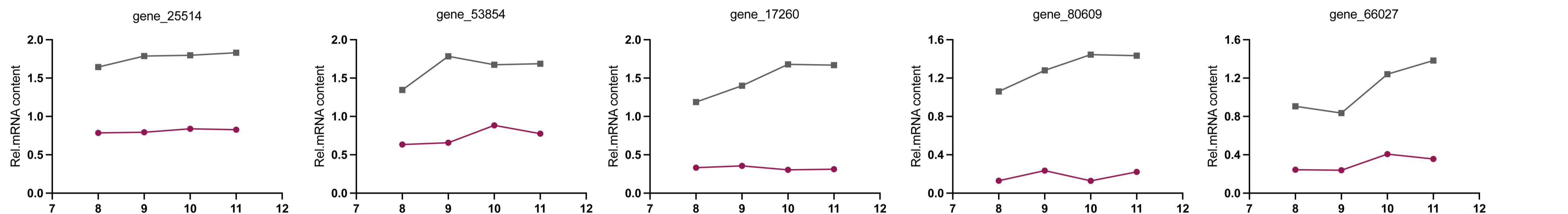
eif5a1-5 vs K326
KEGG Enrichment top 20



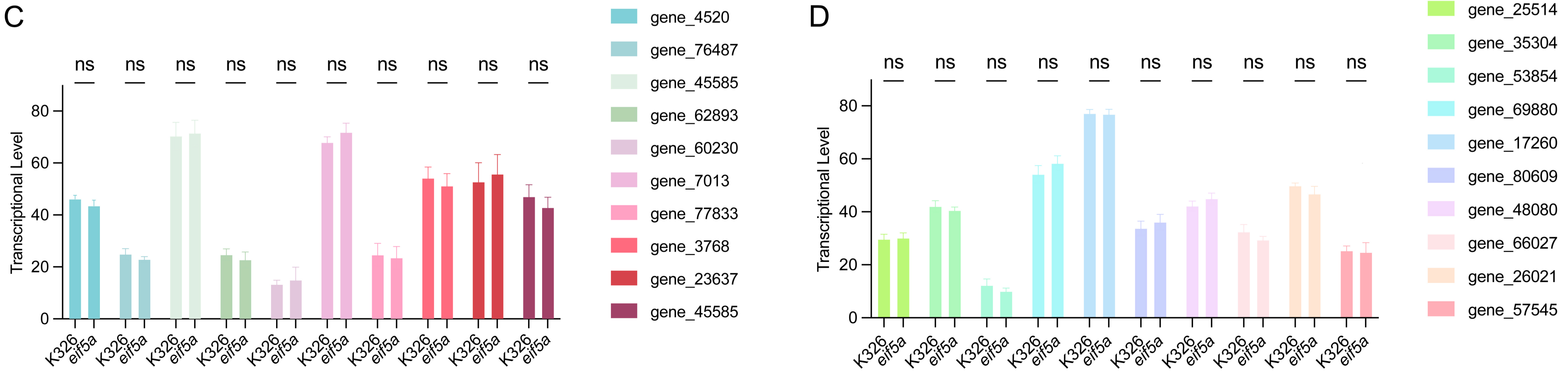
A



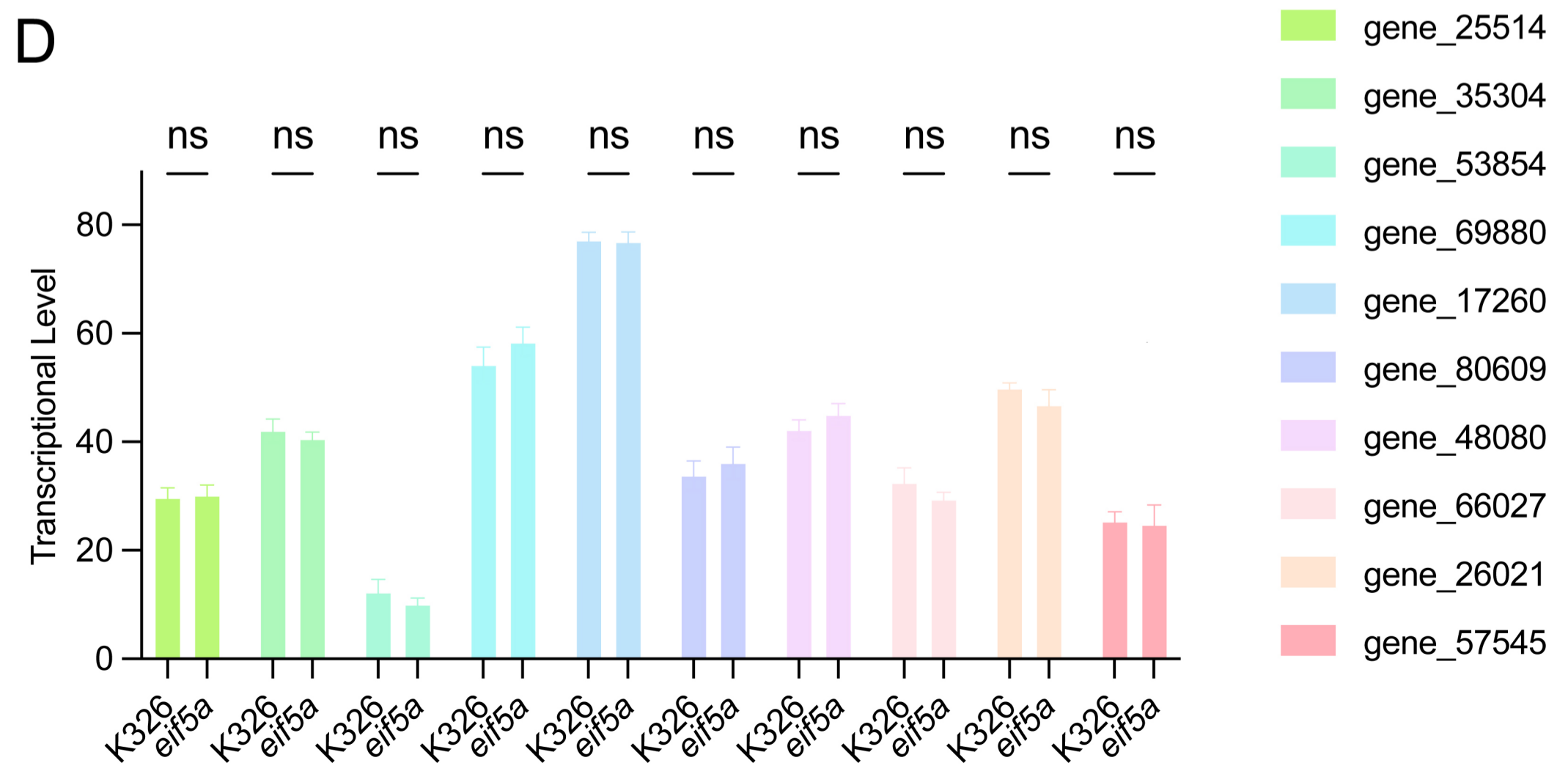
B

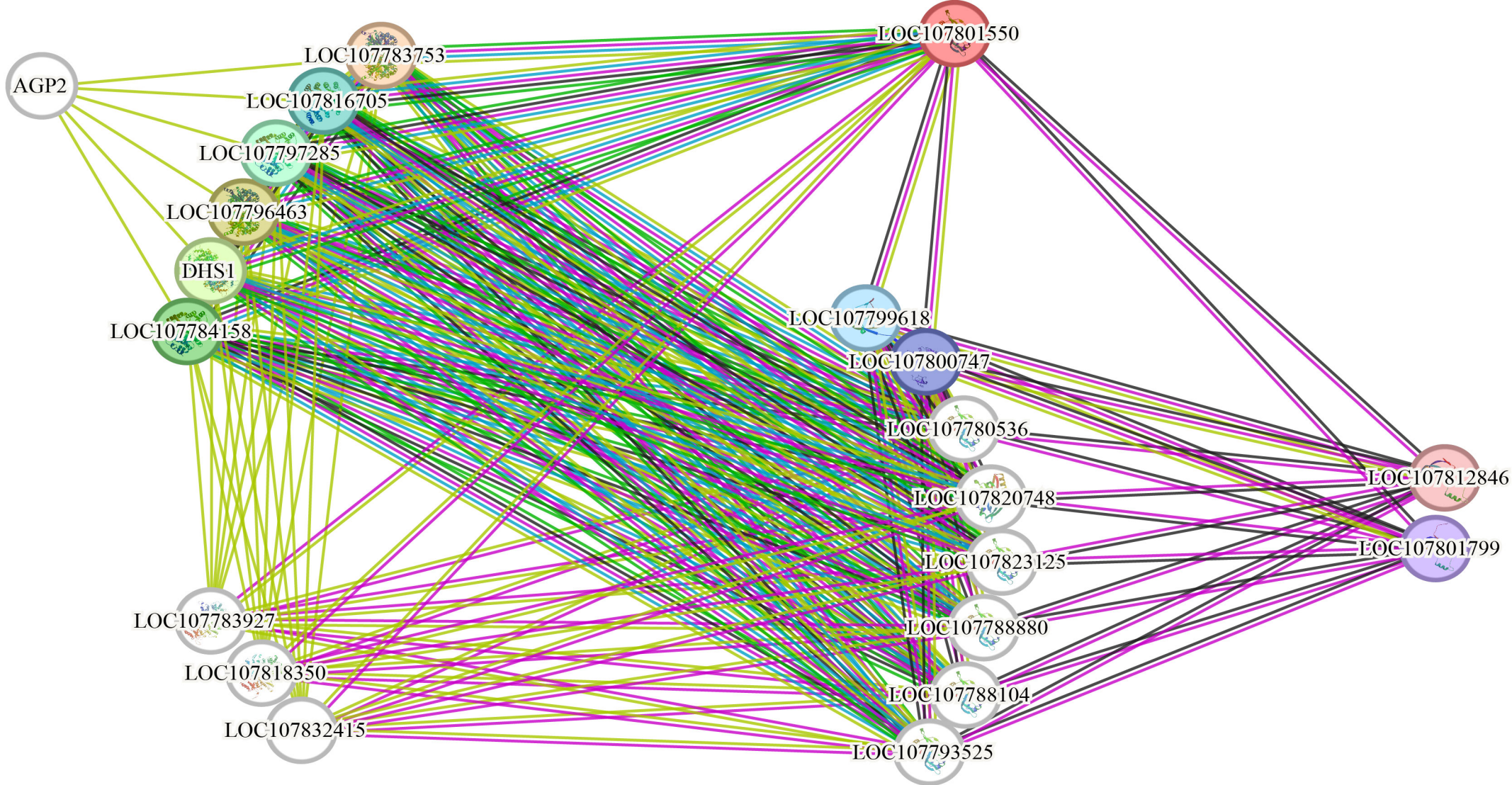


C



D





Known Interaction

- — ● from curated databases
- — ● experimentally determined

Predicted Interaction

- — ● gene neighborhood
- — ● gene fusion
- — ● gene co-occurrence

Others

- — ● co-expression
- — ● textmining
- — ● protein homology