

Supplementary Materials for
Institutional Quality and Pandemic Resilience:
Cross-Country Evidence on Health and Economic
Outcomes
during COVID-19

Diego A. Diaz*, Cristian Larroulet, Andres Marticorena
School of Business and Economics, Universidad del Desarrollo

April 2, 2026

Supplementary Figures

Supplementary Figure [S1](#) plots the bivariate association between the WGI composite and reported COVID-19 deaths per million. Supplementary Figure [S2](#) shows the corresponding relationship for excess mortality, Supplementary Figure [S3](#) shows the relationship for end-2021 full vaccination coverage, and Supplementary Figure [S4](#) shows the relationship for GDP growth in 2020.

Supplementary Figure [S5](#) summarizes correlations between the individual WGI dimensions and the main pandemic outcomes. Supplementary Figure [S6](#) compares the evolution of the

*Corresponding author: Diego A. Diaz. Email: diegodiaz@uchicago.edu.

OxCGRT Stringency Index in Chile and selected Latin American peers.

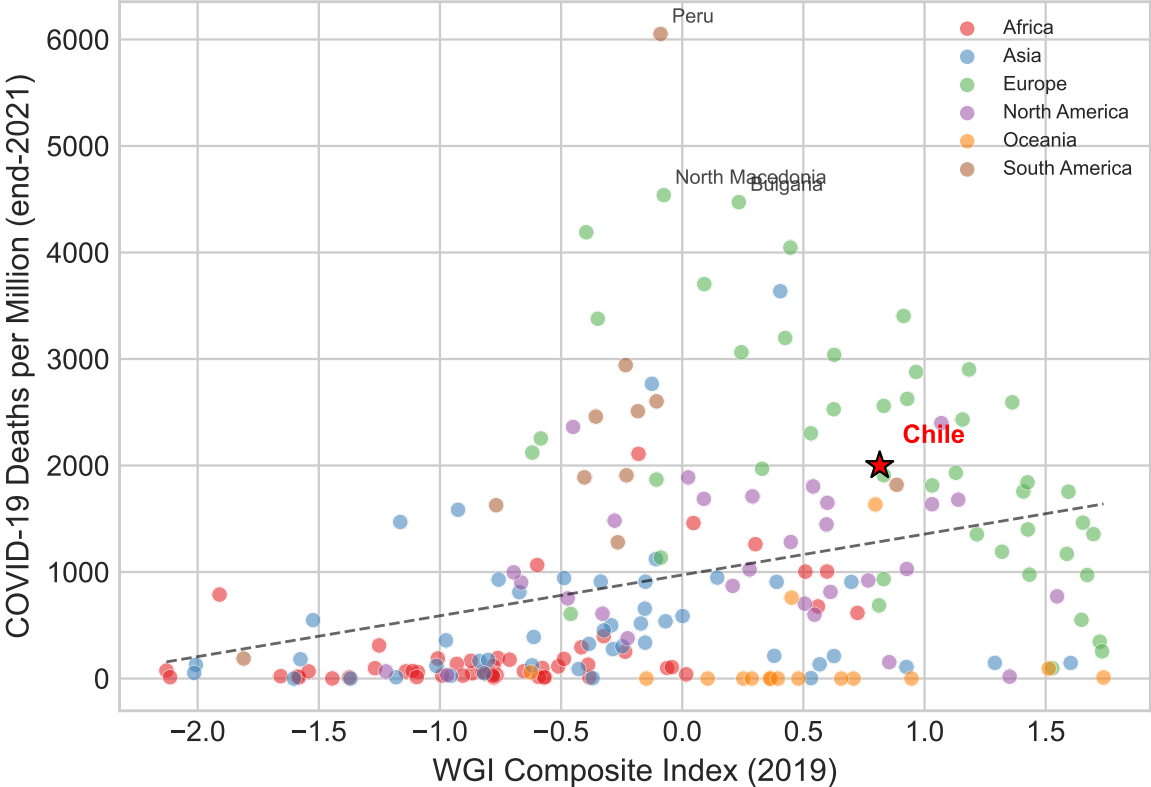


Figure S1: WGI Composite Index vs. COVID-19 Deaths per Million. Each point represents a country, colored by continent. Chile is highlighted with a red star. The dashed line is the OLS fit.

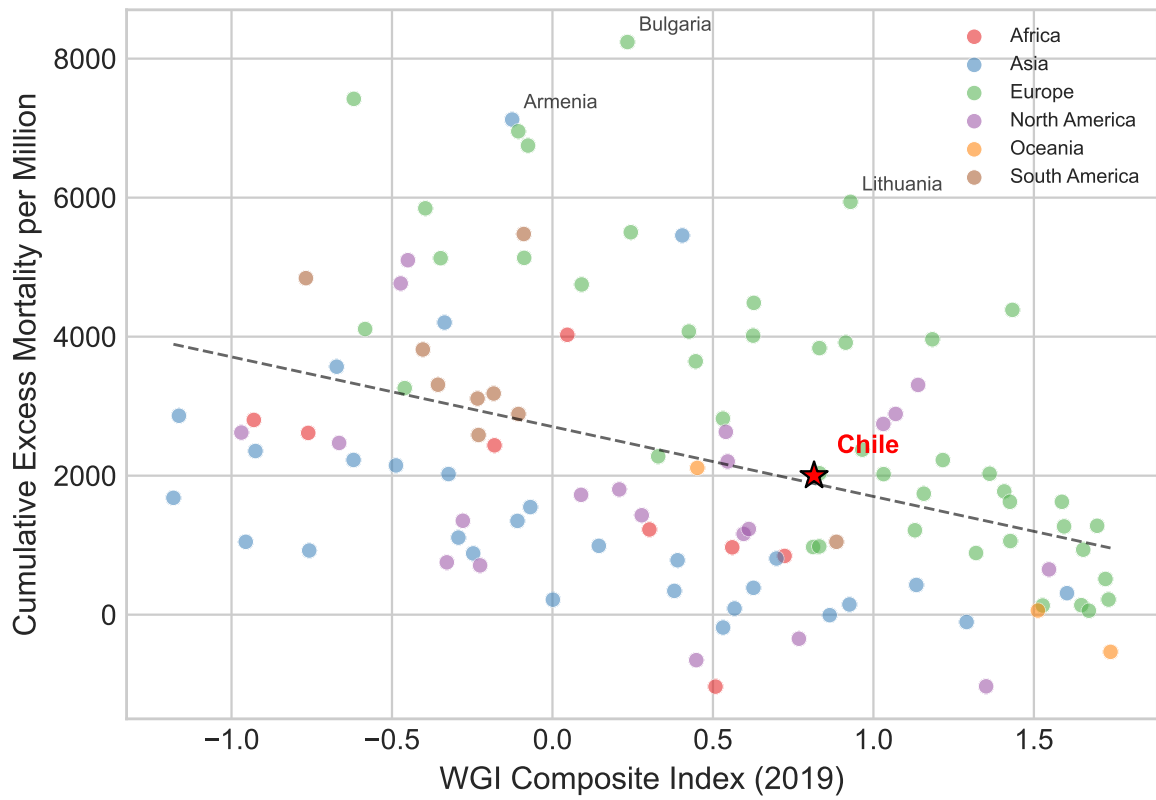


Figure S2: WGI Composite Index vs. Excess Mortality per Million

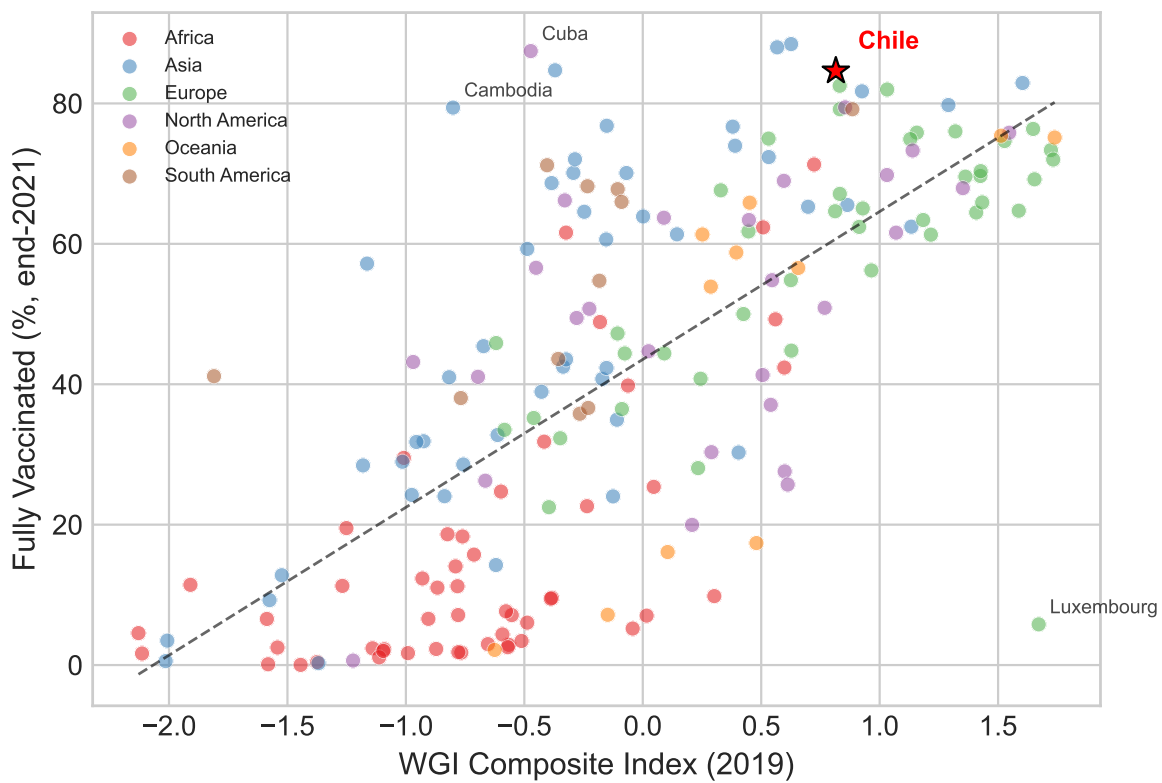


Figure S3: WGI Composite Index vs. Vaccination Rate (% Fully Vaccinated)

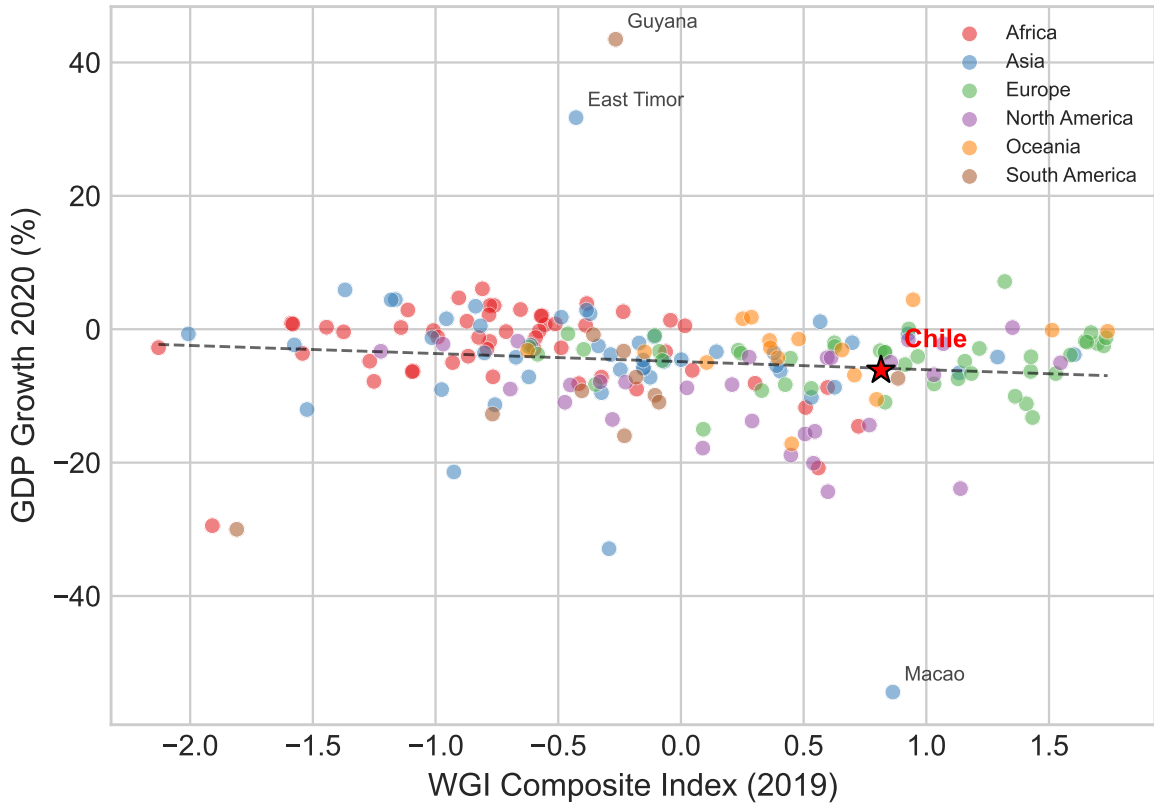


Figure S4: WGI Composite Index vs. GDP Growth 2020

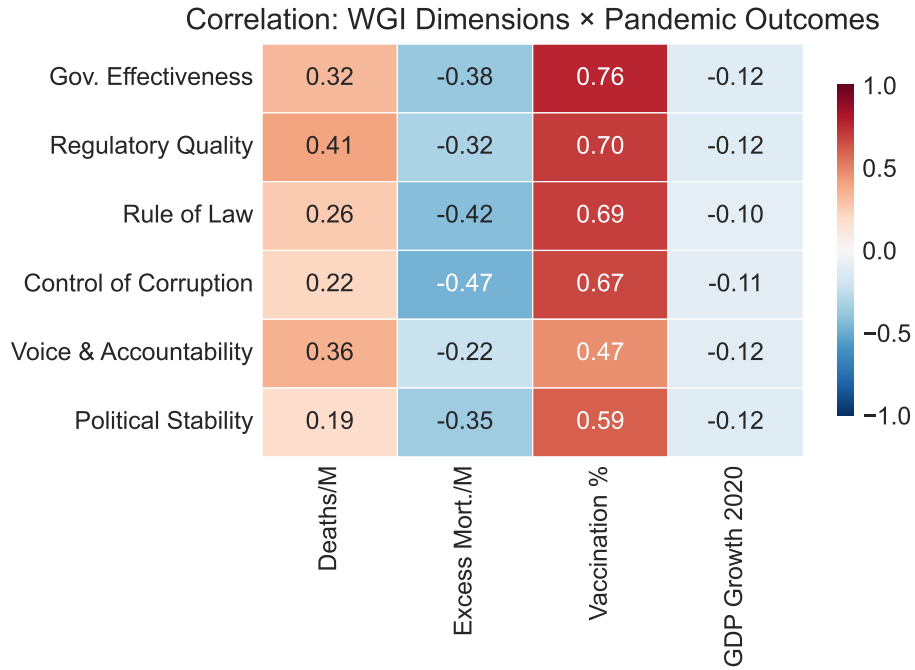


Figure S5: Correlation Heatmap: Individual WGI Dimensions and Pandemic Outcomes

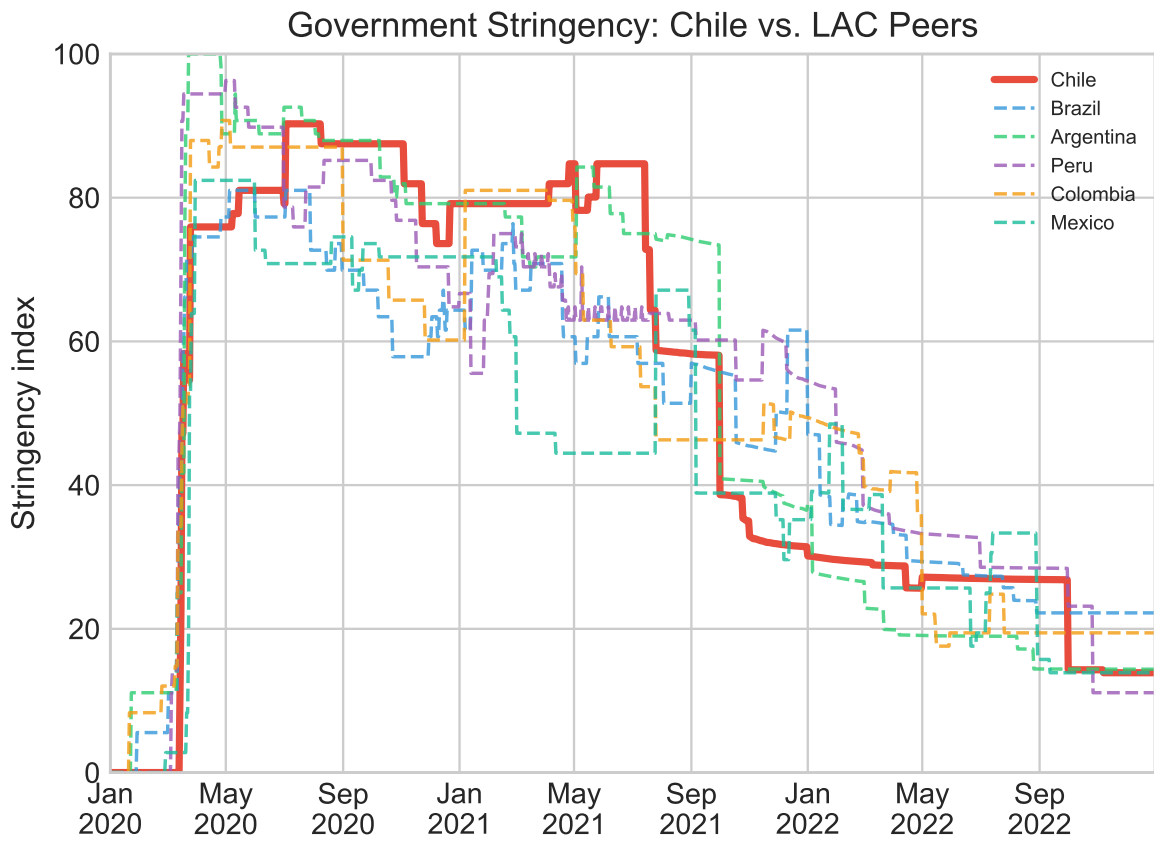


Figure S6: Government Stringency Index: Chile vs. Latin American Peers

Supplementary Tables

Supplementary Table S1 reports attrition diagnostics for the full-specification samples. Supplementary Table S2 re-estimates the reported-deaths specification ladder on the common full-model sample, and Supplementary Table S3 does the same for the excess-mortality ladder.

Table S1: Attrition Diagnostics for Full-Specification Samples

	Deaths incl.	Deaths excl.	Excess incl.	Excess excl.
Countries	107	129	76	160
WGI composite	0.136	-0.209	0.441	-0.306
Log GDP per capita	9.905	9.312	10.335	9.194
Population 65+ (%)	10.716	8.112	13.160	7.357
Hospital beds/1000	3.060	2.982	3.745	2.405
Physicians/1000	2.385	1.706	3.046	1.211

Notes: Included countries have non-missing data for the full specification of the relevant model. Excluded countries are all remaining countries in the analysis cross-section. Means are reported for the listed observables.

Table S2: Common-Sample Robustness: COVID-19 Deaths per Million

	(1)	(2)	(3)	(4)	(5)	(6)
<i>Dep. var.: COVID-19 deaths per million</i>						
WGI composite	337.162*** (106.313)	-573.943*** (178.000)	-553.660*** (179.542)	-461.354*** (177.090)	-490.843*** (176.020)	-375.274** (190.670)
Constant	1147.146*** (114.061)	-1254.061 (1023.972)	-697.347 (1283.798)	-1246.828 (1211.218)	-1522.596 (1276.914)	-623.735 (1522.727)
Log GDP per capita		37.672 (141.283)	-15.868 (160.819)	-69.260 (164.034)	-22.007 (172.650)	-9.007 (181.639)
Population 65+ (%)		139.919*** (21.584)	128.934*** (31.322)	132.641*** (31.967)	130.154*** (32.311)	101.072*** (38.410)
Pop. density		-0.134** (0.063)	-0.118* (0.071)	-0.109 (0.070)	-0.106 (0.067)	-0.034 (0.056)
Urbanization (%)		10.755 (7.183)	9.470 (8.443)	6.601 (7.776)	6.129 (7.676)	0.196 (6.037)
Health exp. (% GDP)			-9.040 (40.784)	-3.825 (37.687)	-5.885 (38.705)	-57.711 (48.488)
Hospital beds/1000			-29.121 (64.150)	-1.763 (66.386)	-9.748 (68.463)	41.489 (67.872)
Physicians/1000			131.908 (131.993)	112.063 (127.893)	115.762 (127.047)	121.719 (155.061)
Stringency index				21.753** (10.910)	21.609** (10.881)	12.432 (8.767)
Diabetes prev. (%)					-11.445 (16.674)	12.779 (15.524)
N	107	107	107	107	107	107
R^2	0.059	0.401	0.409	0.434	0.436	0.584
Adj. R^2	0.050	0.371	0.361	0.382	0.377	0.515
Continent FE	No	No	No	No	No	Yes

Notes: All columns are estimated on the common sample defined by non-missingness in the full specification for the stated outcome. This isolates coefficient changes from changes in country composition across the ladder. Robust (HC1) standard errors in parentheses. *** $p < 0.01$,

** $p < 0.05$, * $p < 0.10$.

Table S3: Common-Sample Robustness: Excess Mortality per Million

	(1)	(2)	(3)	(4)	(5)	(6)
<i>Dep. var.: Excess mortality per million</i>						
WGI composite	-1036.065*** (213.824)	-2335.917*** (352.332)	-2230.523*** (358.464)	-2088.529*** (389.034)	-2094.014*** (397.213)	-1727.835*** (386.382)
Constant	2788.484*** (251.322)	-1914.706 (3688.766)	-550.049 (3973.498)	-1841.892 (3753.746)	-1881.879 (3789.839)	522.728 (4261.851)
Log GDP per capita		214.301 (399.353)	81.793 (433.779)	53.714 (421.938)	62.979 (441.121)	-150.806 (492.138)
Population 65+ (%)		231.561*** (38.256)	229.752*** (55.559)	242.061*** (57.921)	241.326*** (60.064)	162.131** (68.231)
Pop. density		0.017 (0.116)	-0.000 (0.127)	0.009 (0.118)	0.009 (0.118)	0.123 (0.103)
Urbanization (%)		0.144 (11.288)	2.079 (14.029)	-1.571 (12.927)	-1.579 (13.028)	-5.322 (12.890)
Health exp. (% GDP)			-86.091 (117.981)	-103.318 (117.162)	-103.716 (118.591)	-190.917 (138.781)
Hospital beds/1000			-41.525 (94.312)	-2.279 (99.935)	-3.713 (101.904)	86.664 (96.966)
Physicians/1000			207.299 (218.963)	191.236 (211.475)	190.681 (214.568)	269.922 (257.393)
Stringency index				31.242* (18.134)	31.030* (18.540)	30.689 (19.931)
Diabetes prev. (%)					-2.691 (33.795)	38.638 (29.636)
N	76	76	76	76	76	76
R^2	0.187	0.535	0.549	0.565	0.565	0.642
Adj. R^2	0.176	0.502	0.495	0.505	0.498	0.553
Continent FE	No	No	No	No	No	Yes

Notes: All columns are estimated on the common sample defined by non-missingness in the full specification for the stated outcome. This isolates coefficient changes from changes in country composition across the ladder. Robust (HC1) standard errors in parentheses. *** $p < 0.01$, ** $p < 0.05$, * $p < 0.10$.