

The molecular weight marker used in this study is WJ103 (Yamei Biotech, product code: WJ103). The product legend is provided below.



Figure 2b: Full uncropped blots for AKAP4 and GAPDH.

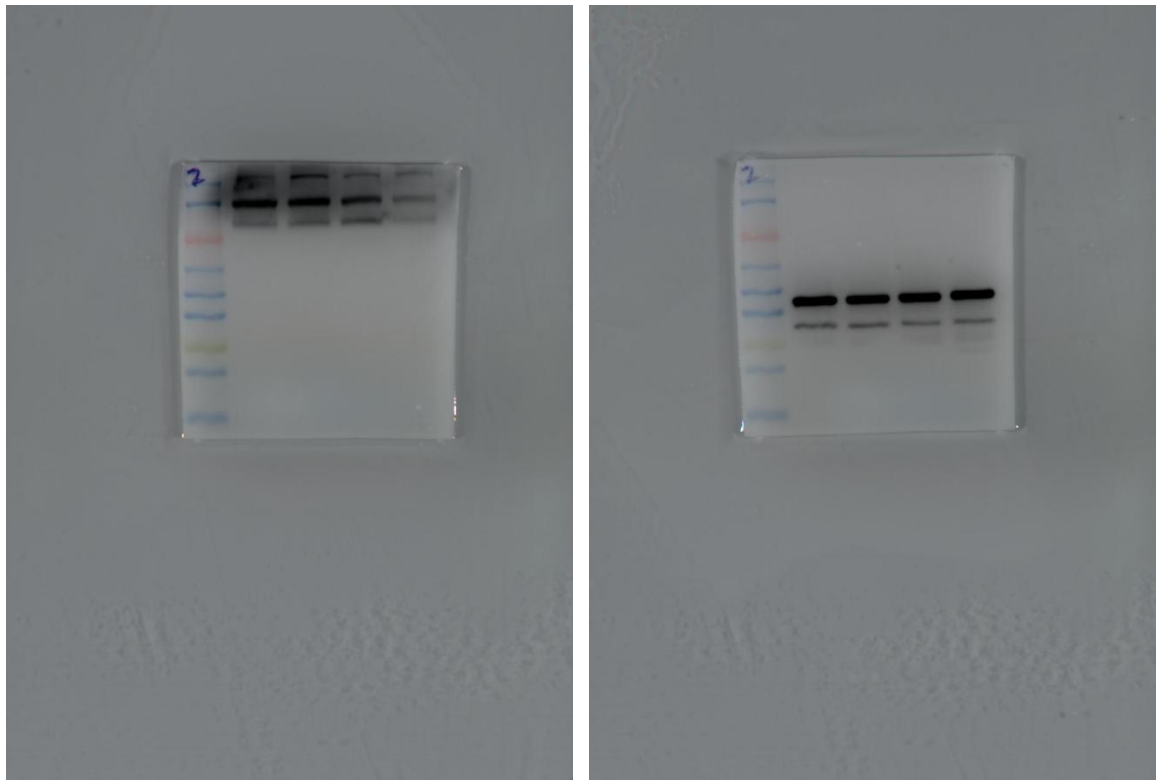


Figure 2c: Full uncropped blots for PKA and GAPDH.

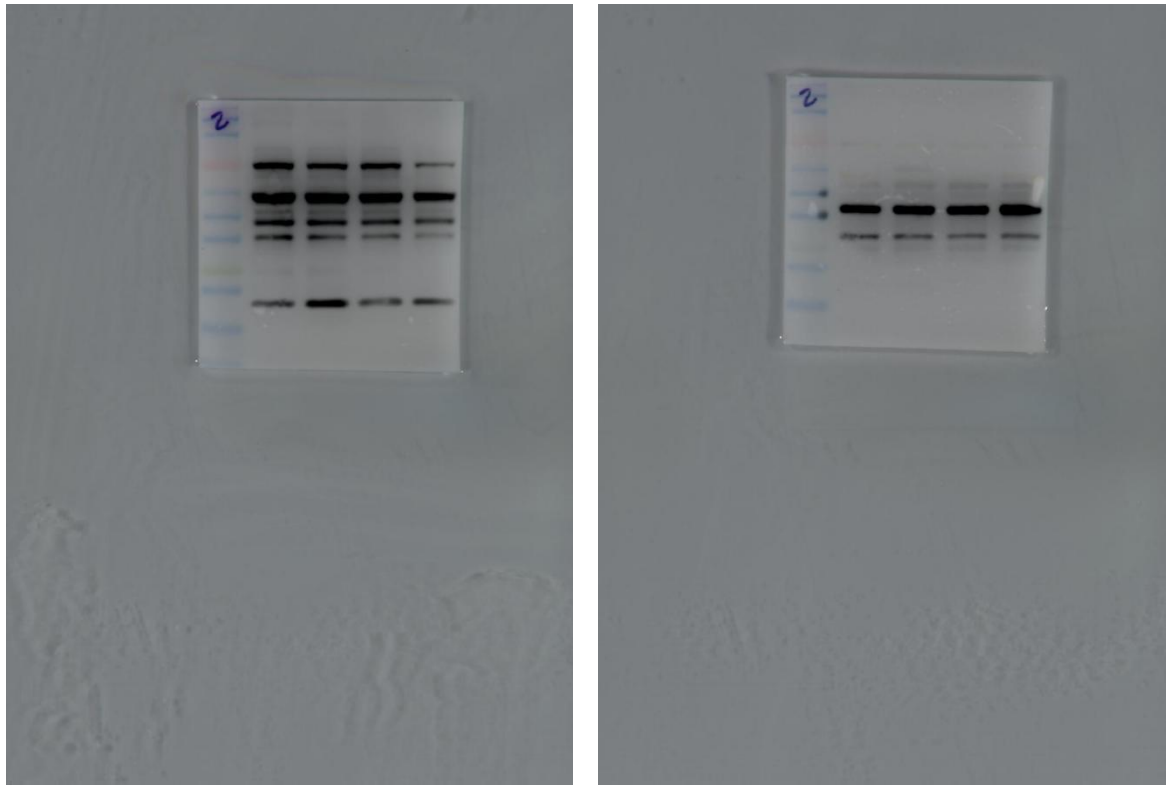


Figure 2d: Full uncropped blots for p-BAD and GAPDH.

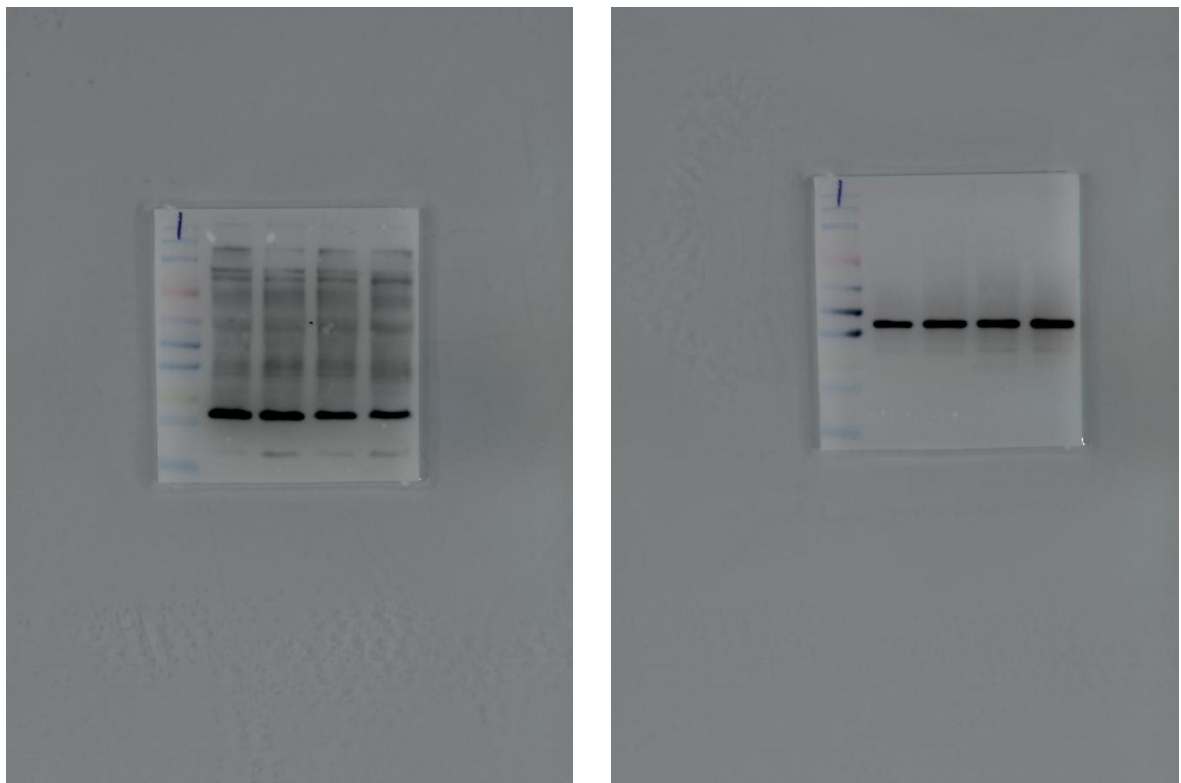


Figure 2e: Full uncropped blots for BAD and GAPDH.



Figure 2i: Full uncropped blots for BCL2 and GAPDH.



Figure 2j: Full uncropped blots for BAX and GAPDH.



Figure 2k: Full uncropped blots for cytochrome c and GAPDH.



Figure 2l: Full uncropped blots for Cleaved-caspase3 and GAPDH.

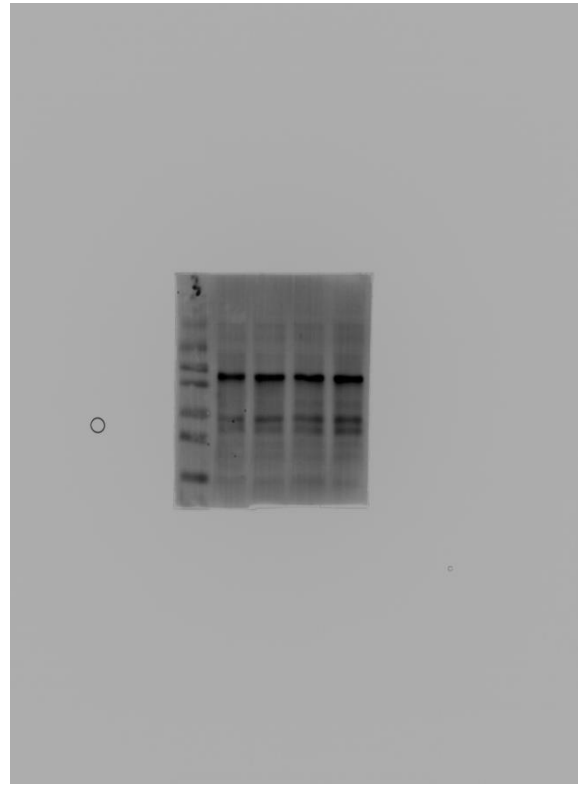
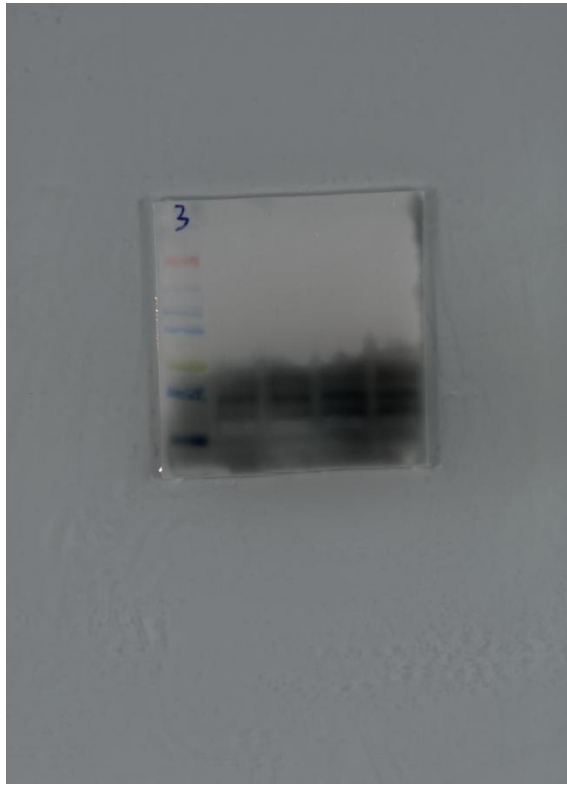


Figure 4d: Full uncropped blots for AKAP4 and GAPDH.

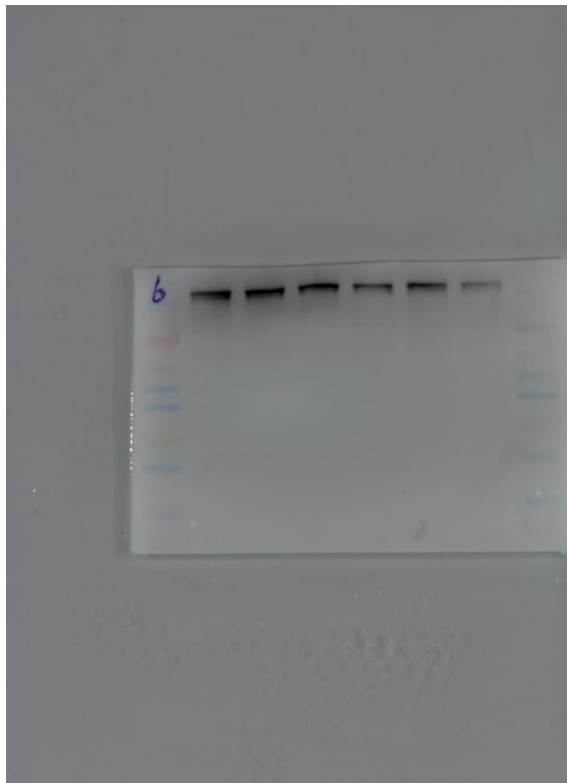


Figure 4e: Full uncropped blots for PKA and GAPDH.

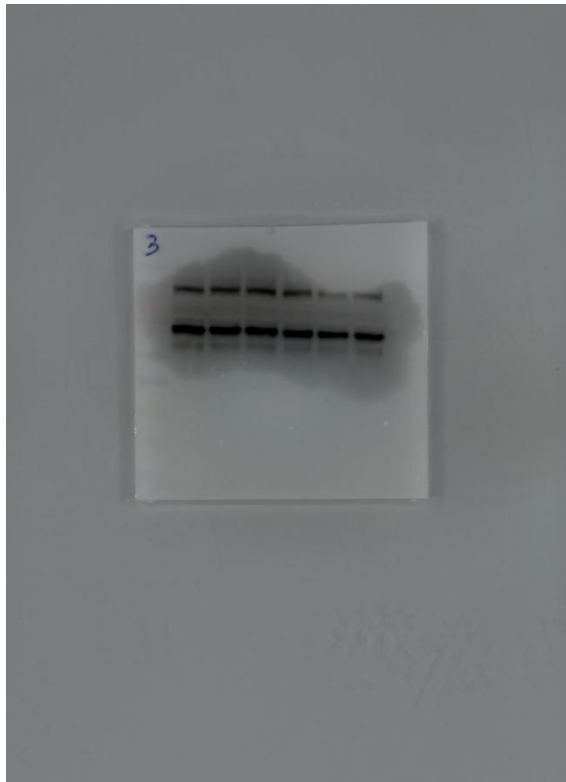


Figure 4f: Full uncropped blots for p-BAD and GAPDH.

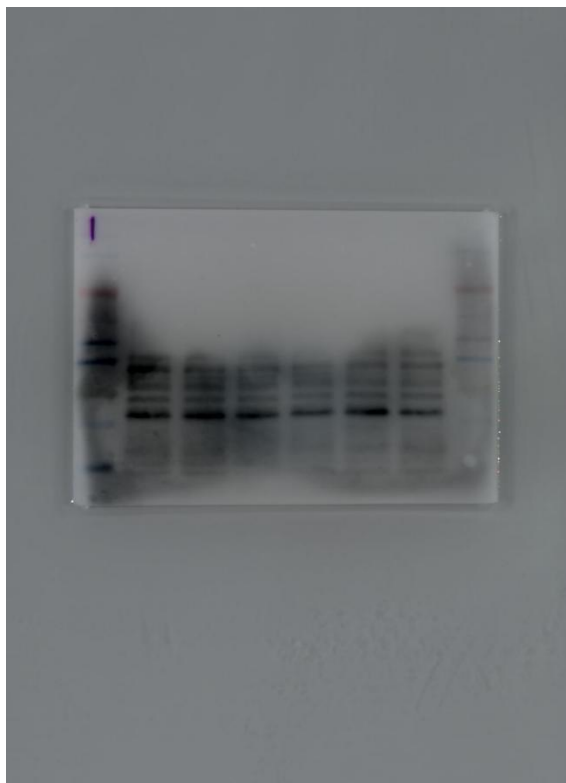


Figure 4g: Full uncropped blots for BAD and GAPDH.

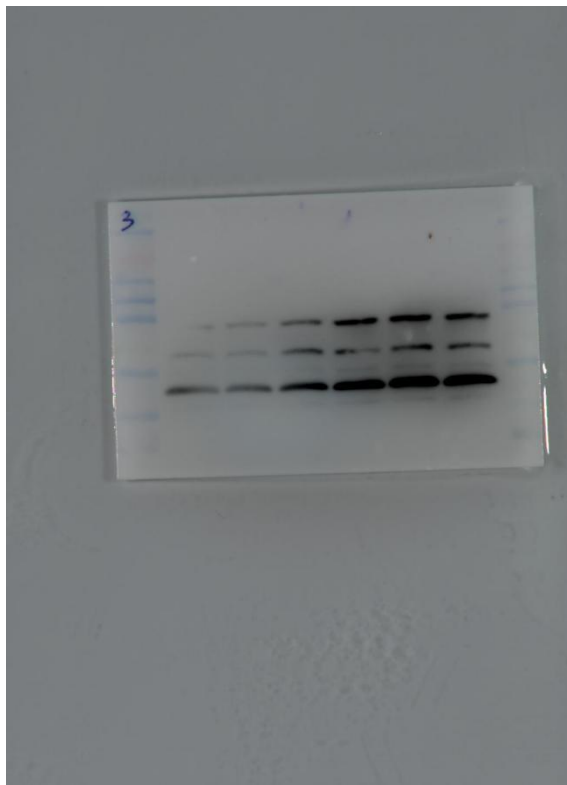


Figure 4h: Full uncropped blots for BCL2 and GAPDH.



Figure 4i: Full uncropped blots for BAX and GAPDH.

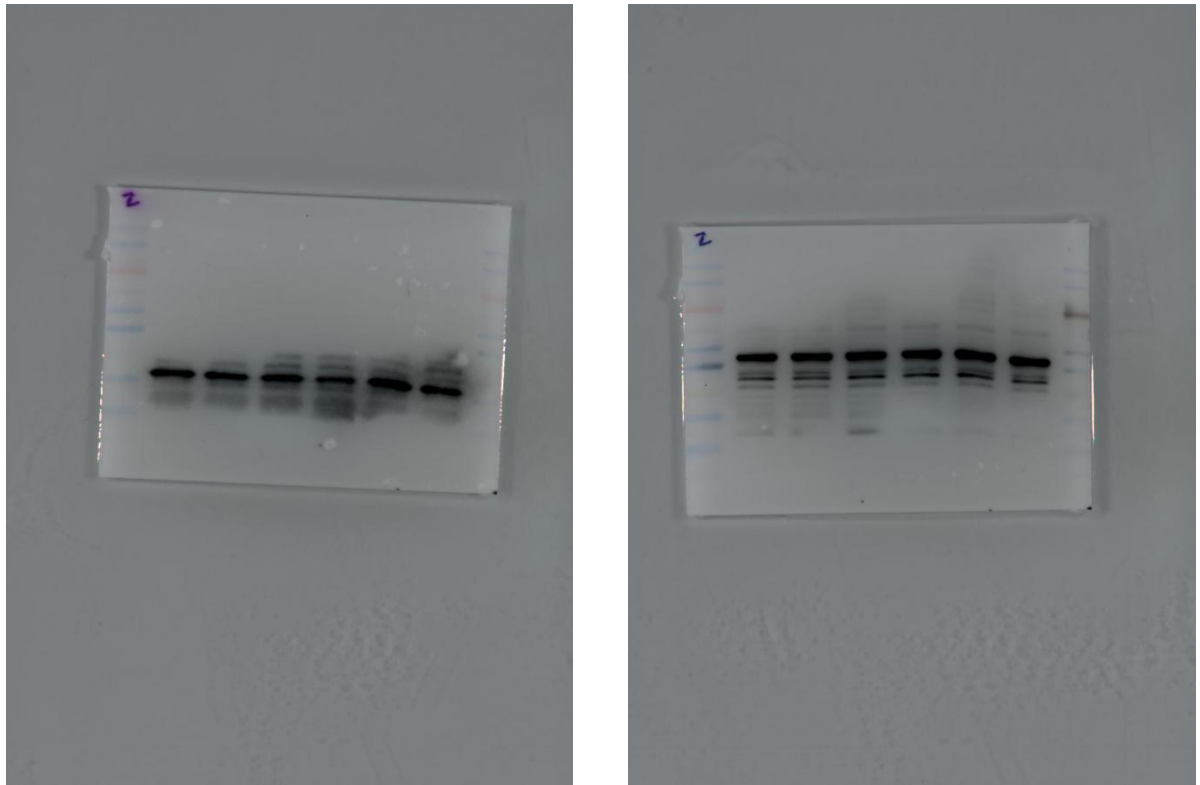


Figure 4j: Full uncropped blots for cytochrome c and GAPDH.

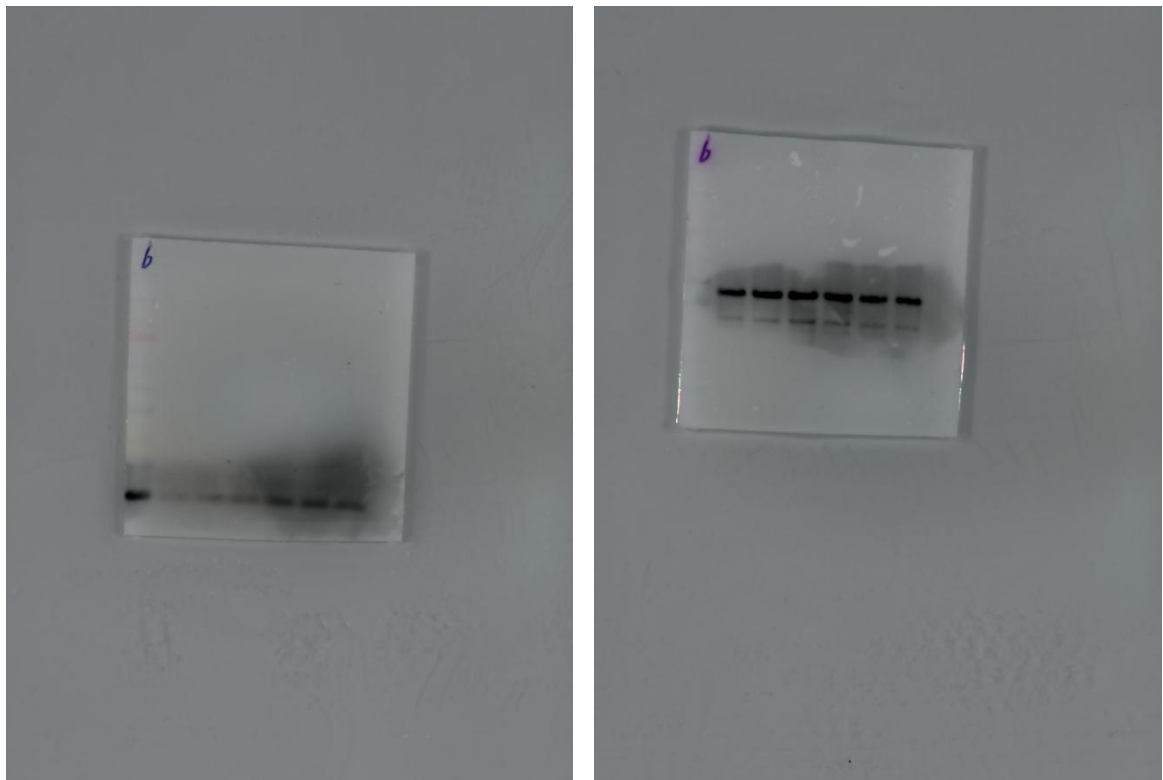


Figure 4k: Full uncropped blots for Cleaved-caspase3 and GAPDH.

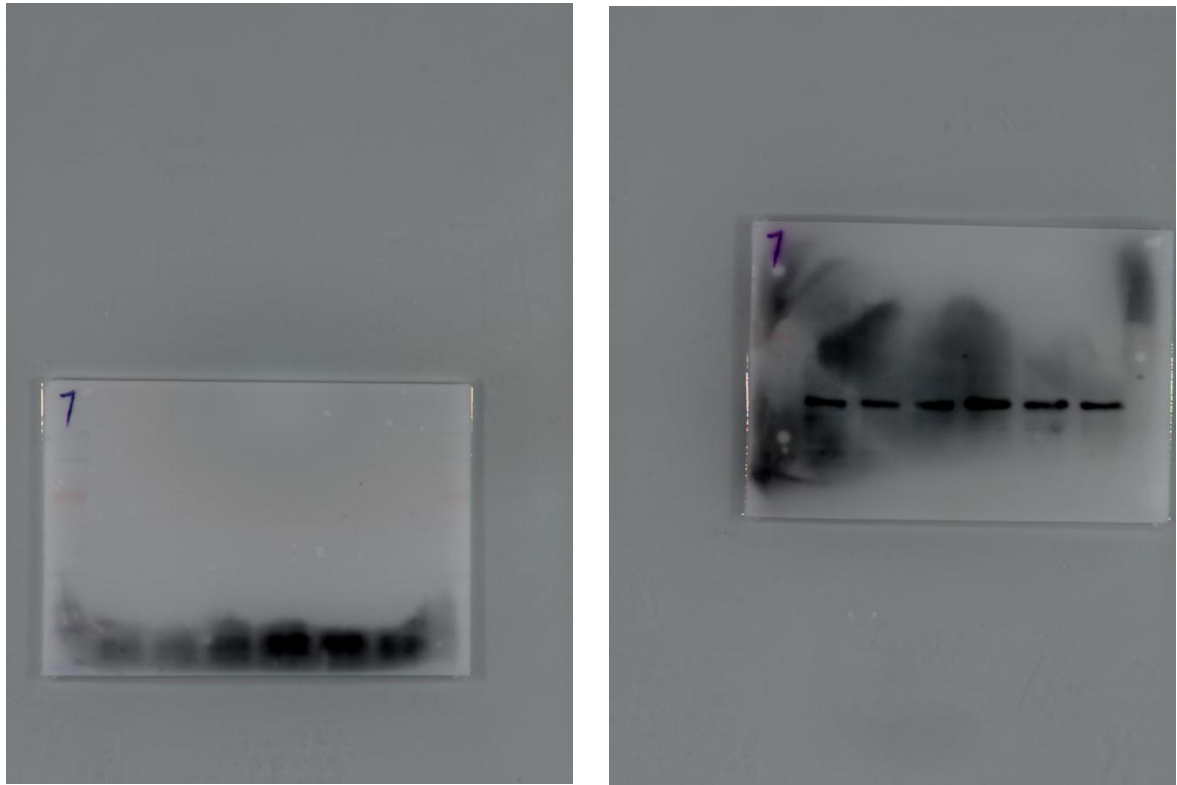


Figure 5d: Full uncropped blots for AKAP4 and GAPDH.

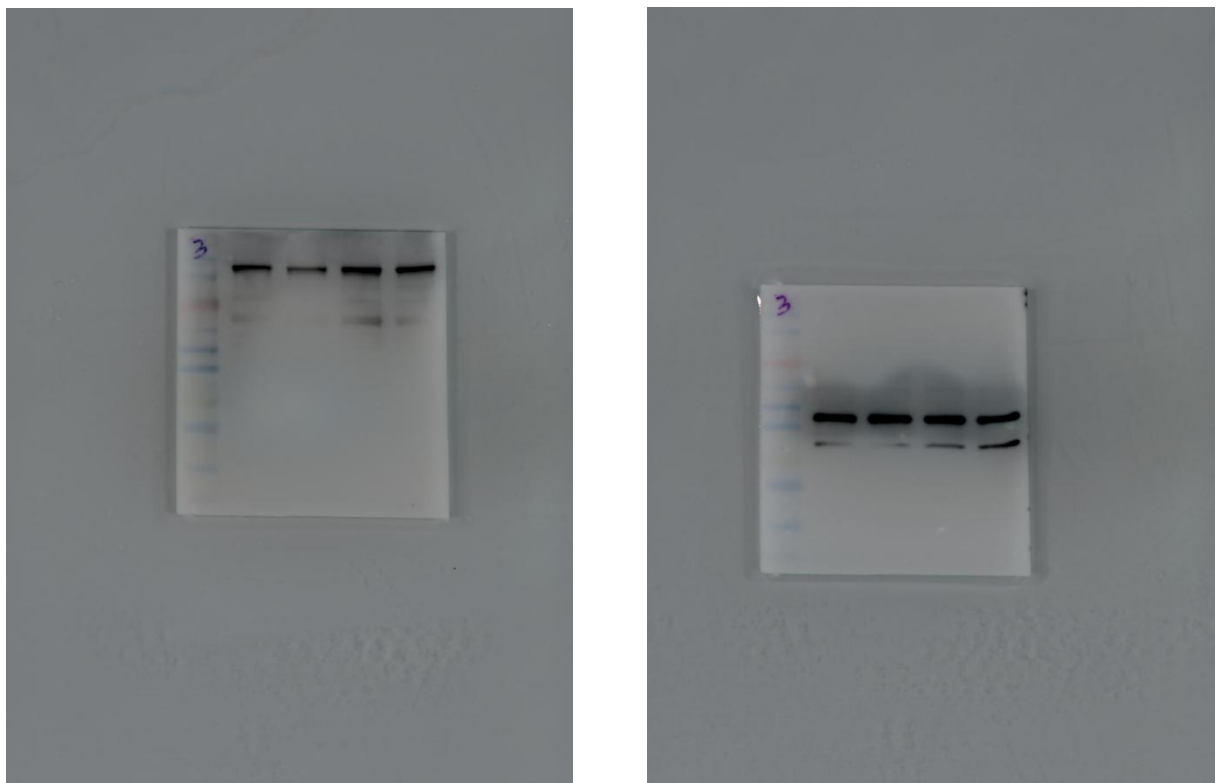


Figure 5e: Full uncropped blots for PKA and GAPDH.

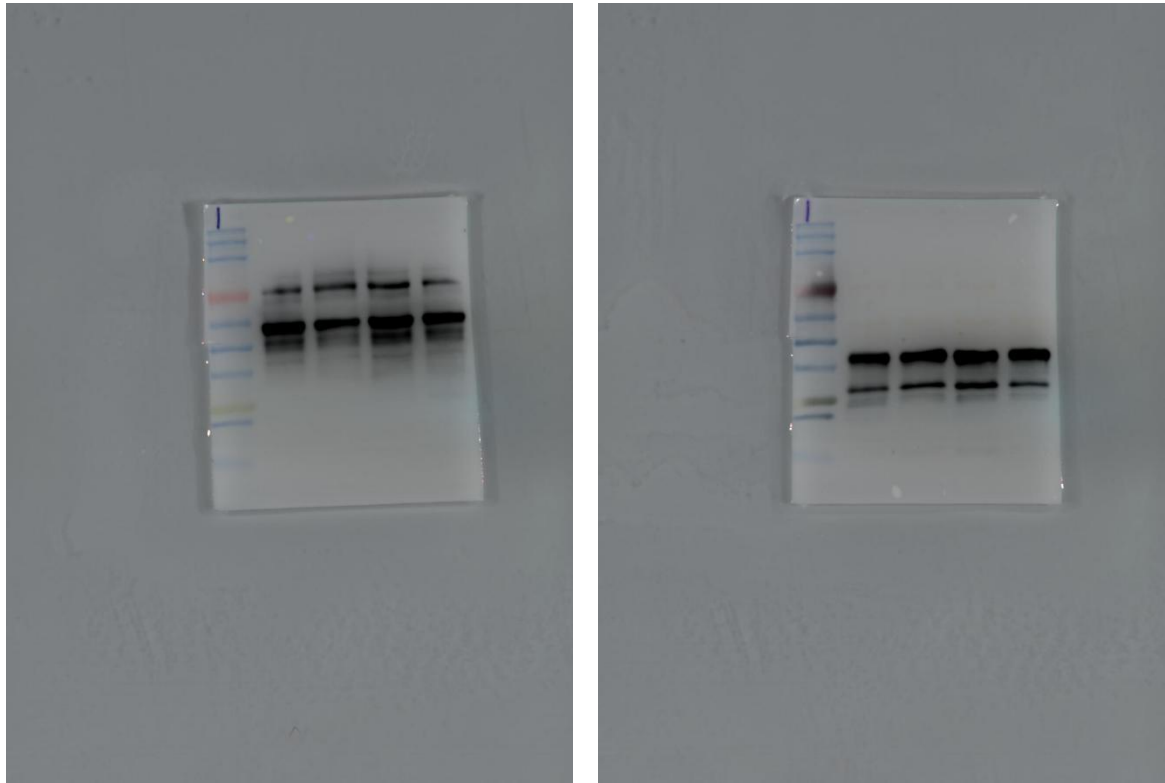


Figure 5f: Full uncropped blots for p-BAD and GAPDH.

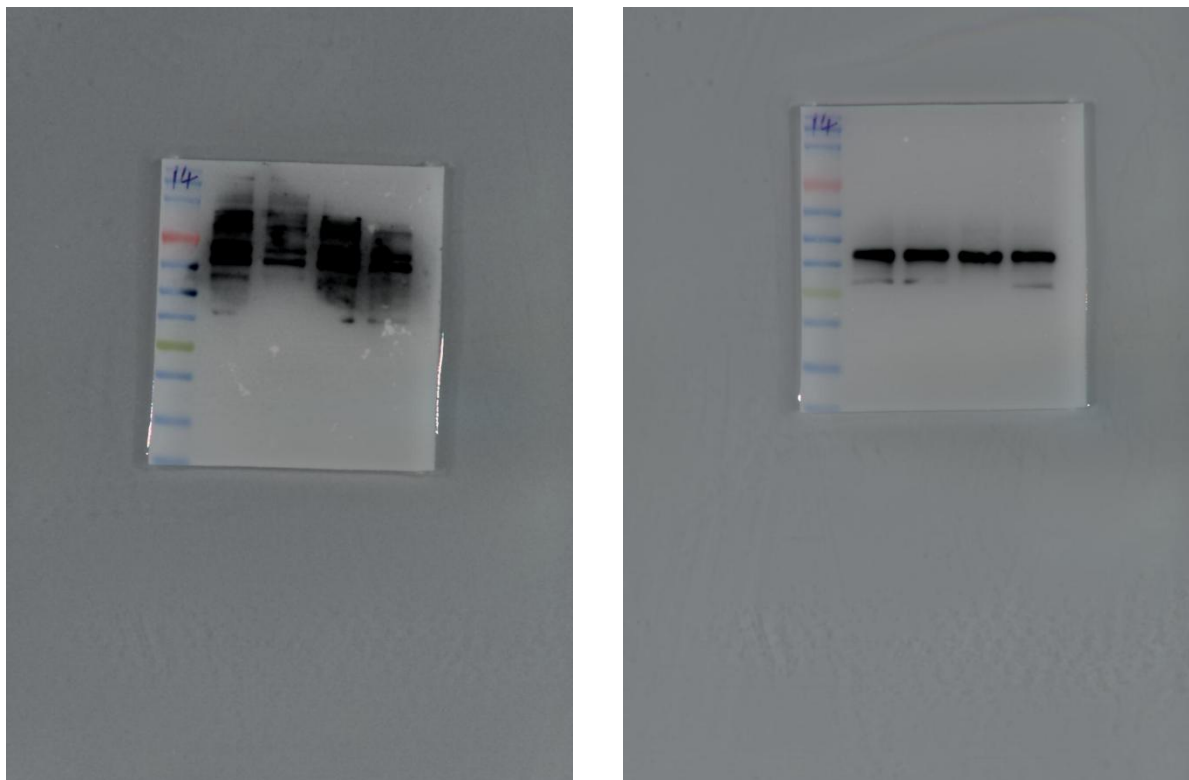


Figure 5g : Full uncropped blots for BAD and GAPDH.



Figure 5k: Full uncropped blots for BCL2 and GAPDH.

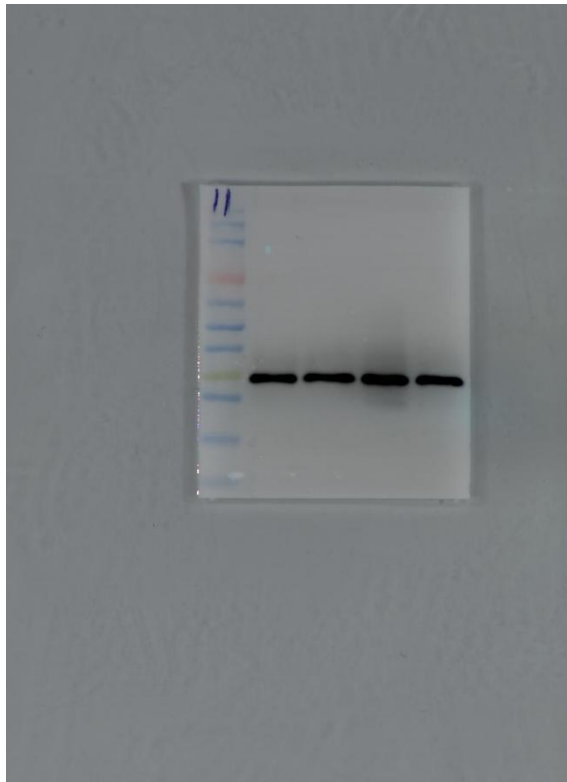


Figure 5l: Full uncropped blots for BAX and GAPDH.

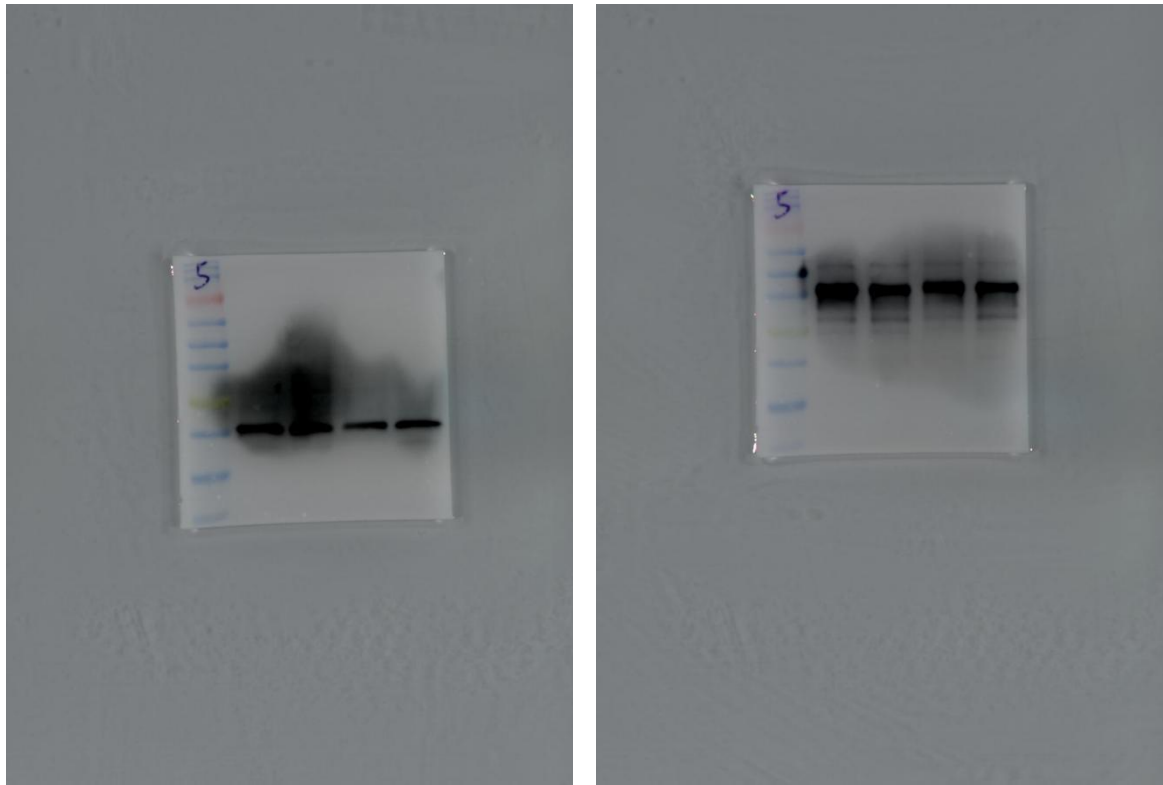


Figure 5m: Full uncropped blots for Cytochrome c and GAPDH.

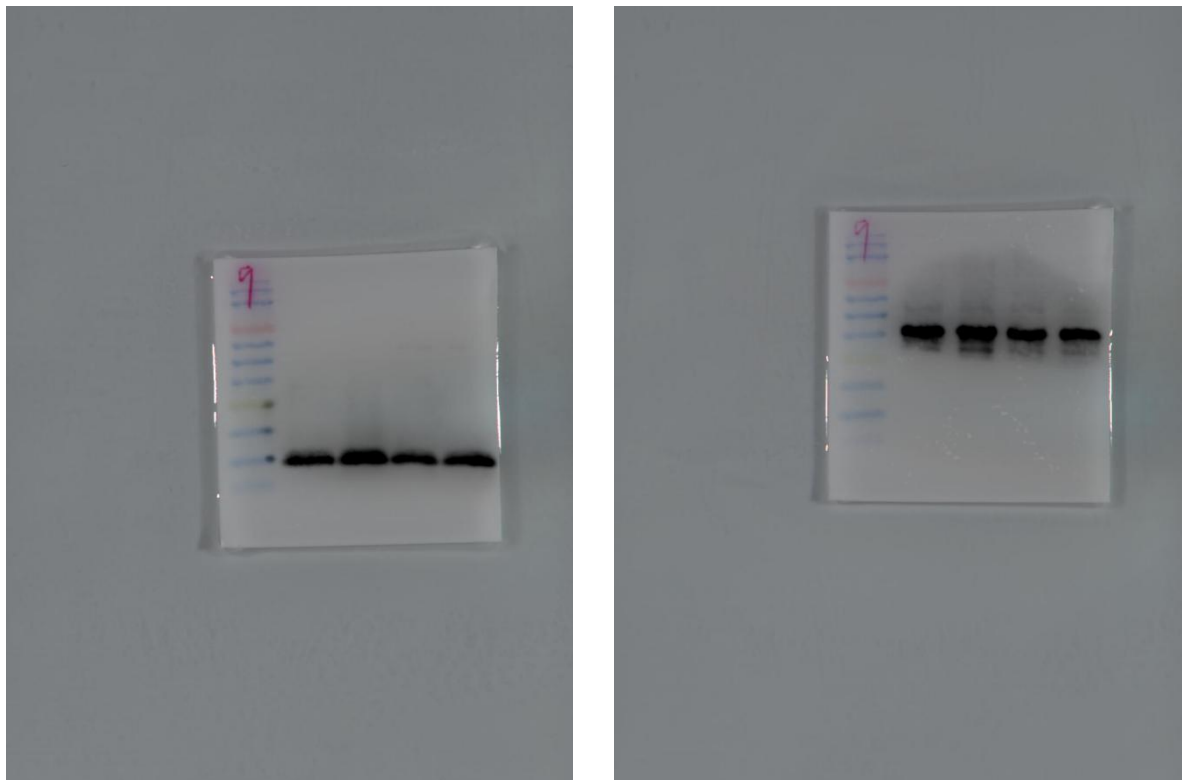
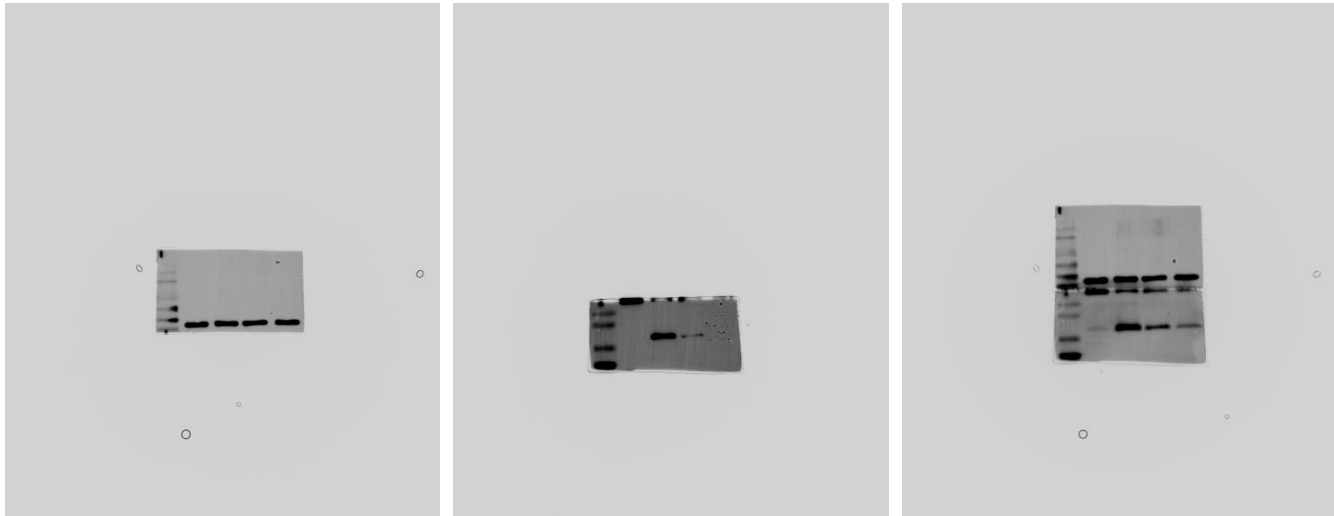


Figure 5n: Full uncropped blots for Cleaved-caspase3 and GAPDH.



Please note: This band was imaged using a different instrument due to a malfunction of the original equipment.