

Supplementary material

Six decades of fishery change inferred from fishers' recollections of their best catches

Benjamin L.H. Jones^{1,2*}, Sophia V. Costa², W. Ryan James^{2,3}, Aaron J. Adams^{4,5}, Ross E. Boucek^{2,4}, Rolando O. Santos³, & Jennifer S. Rehage²

¹ Project Seagrass, Bridgend, UK

² Department of Earth and Environment, Institute of Environment, Florida International University, Miami, Florida, USA

³ Department of Biological Sciences, Institute of Environment, Florida International University, Miami, Florida, USA

⁴ Bonefish and Tarpon Trust, Miami, Florida, USA

⁵ Florida Atlantic University Harbor Branch Oceanographic Institute, Fort Pierce, Florida, USA

Table S1. Chi-squared tests comparing the observed distribution of fishers' reported *best SPUE decades* within each entry cohort to an equal-proportion null expectation across all decades available to that cohort. Degrees of freedom decline through time as fewer decades are available to more recent cohorts. No test was performed for the 2015–2024 cohort because only a single decade was available for comparison.

<i>Decade</i>	<i>Chi-squared</i>	<i>df</i>	<i>P value</i>
1955-1964	8.666667	6	0.193
1965-1974	13.222222	5	< 0.05
1975-1984	5.290323	4	0.259
1985-1994	9.367347	3	< 0.05
1995-2004	6.095238	2	< 0.05
2005-2014	25.325581	1	< 0.001
2015-2024	NA	NA	NA

Table S2. Chi-squared tests comparing the observed distribution of fishers' reported *best weight decades* within each entry cohort to an equal-proportion null expectation across all decades available to that cohort. Degrees of freedom decline through time as fewer decades are available to more recent cohorts. No test was performed for the 2015–2024 cohort because only a single decade was available for comparison.

<i>Decade</i>	<i>Chi-squared</i>	<i>df</i>	<i>P value</i>
1955-1964	11.000000	5	0.0514
1965-1974	14.000000	5	< 0.05
1975-1984	10.538462	4	< 0.05
1985-1994	18.380952	3	< 0.001
1995-2004	3.647059	2	0.161
2005-2014	11.111111	1	< 0.001
2015-2024	NA	NA	NA

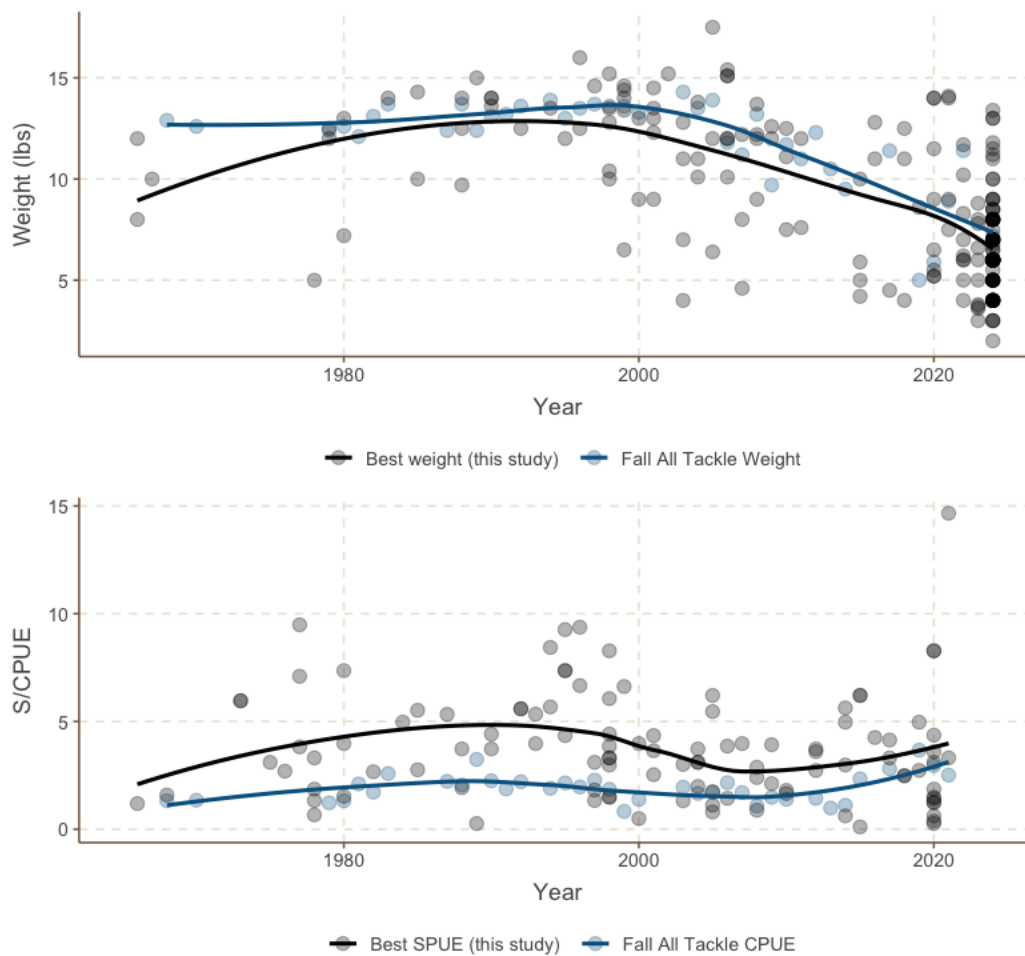


Figure S1. Comparison of best catch results from this study with bonefish tournament records (previously published in Boucek et al. 2023). Panel **a** shows bonefish weight from this study (all weights) versus best tournament weights ($r = 0.52$, $r^2 = 0.27$, $p < 0.05$), which are directly comparable. Panel **b** shows bonefish sightings per unit effort (SPUE) from this study (scaled to per hour) versus tournament catch per unit effort (CPUE). Given SPUE and tournament CPUE are collected at different scales, this comparison intended to show general trends rather than a direct correlation. In **b** smoothed trends from generalized additive models (GAMs) for each dataset show weak alignment ($r^2 = 0.17$), indicating somewhat similar directional patterns over time. Interestingly SPUE seems to show more temporal variance over the 55 years of comparison than tournament catches, with a stronger match in more recent years.