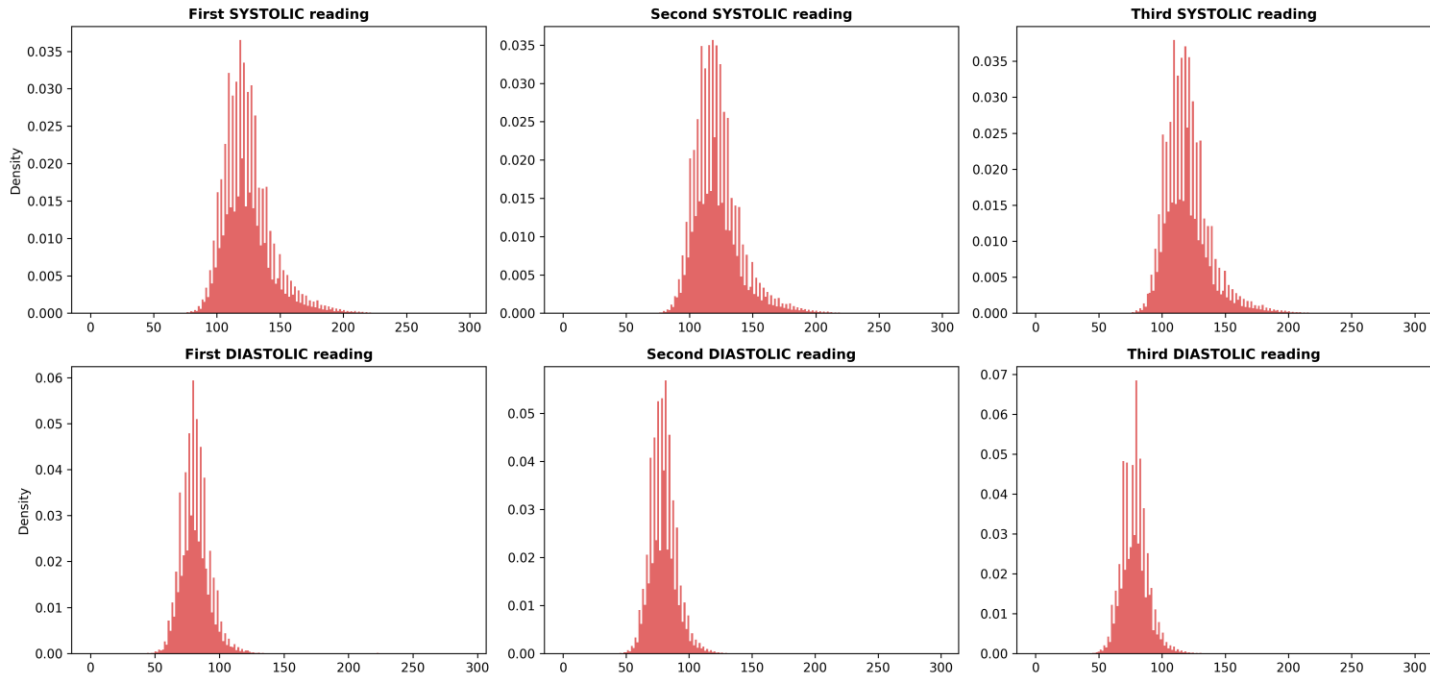


# FEMALE BP READINGS

## Female Blood Pressure Reading Distributions



## Reading-to-Reading BP Differences (Female)

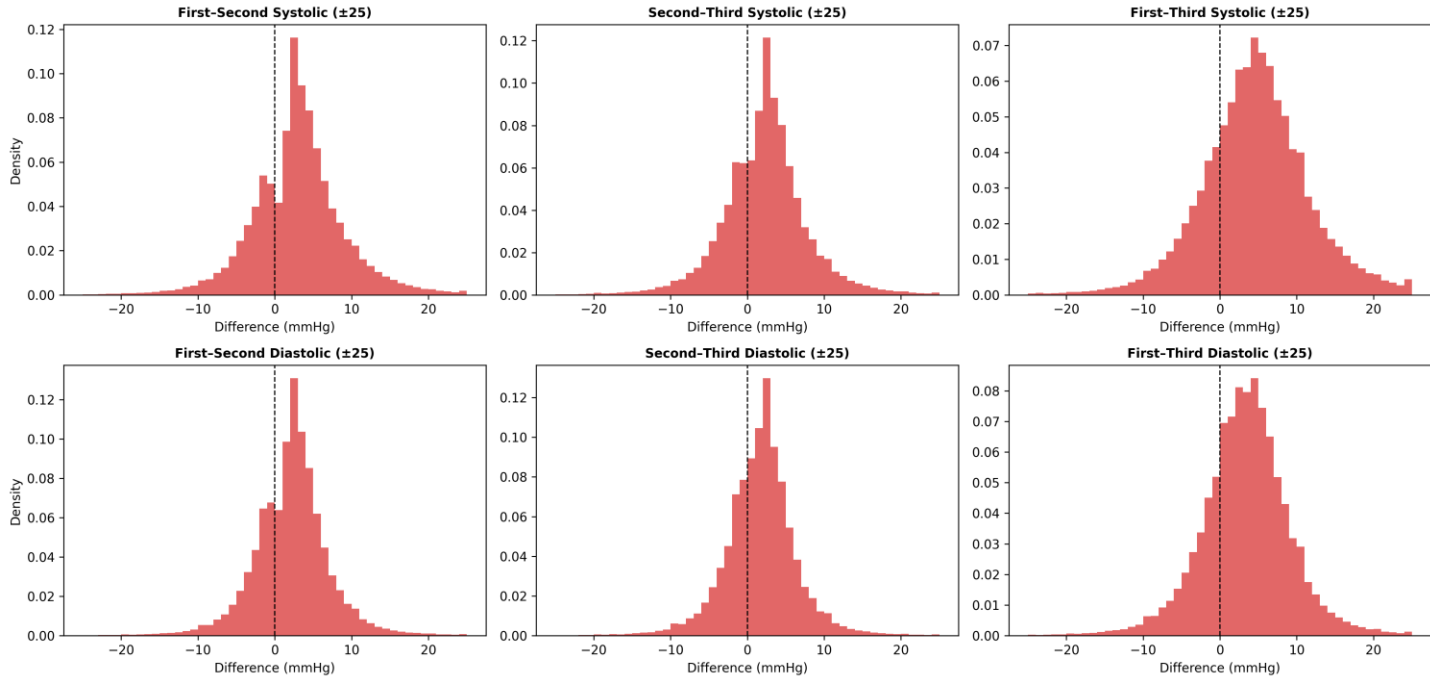
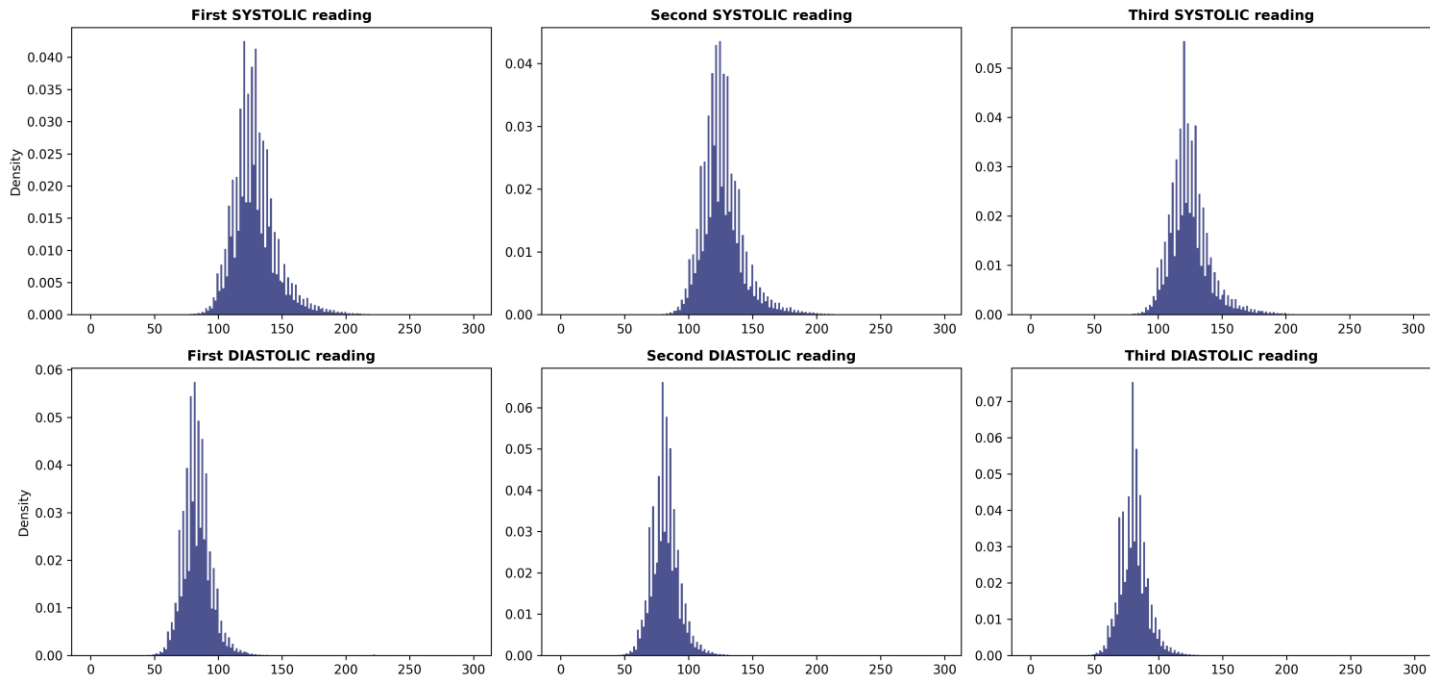


Figure s1: distributions of female SBP and DBP readings, as well as the difference between the readings from NFHS-5 data

# MALE BP READINGS

## Male Blood Pressure Reading Distributions



## Reading-to-Reading BP Differences (Male)

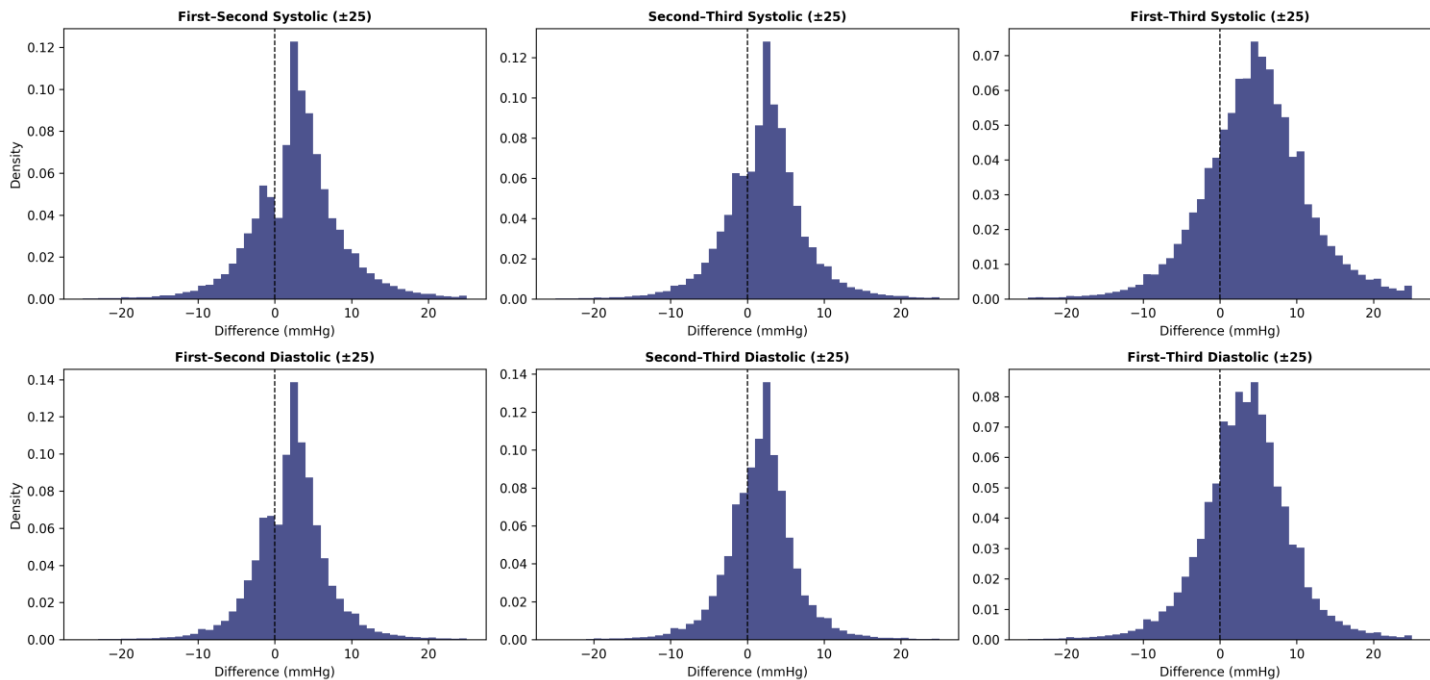
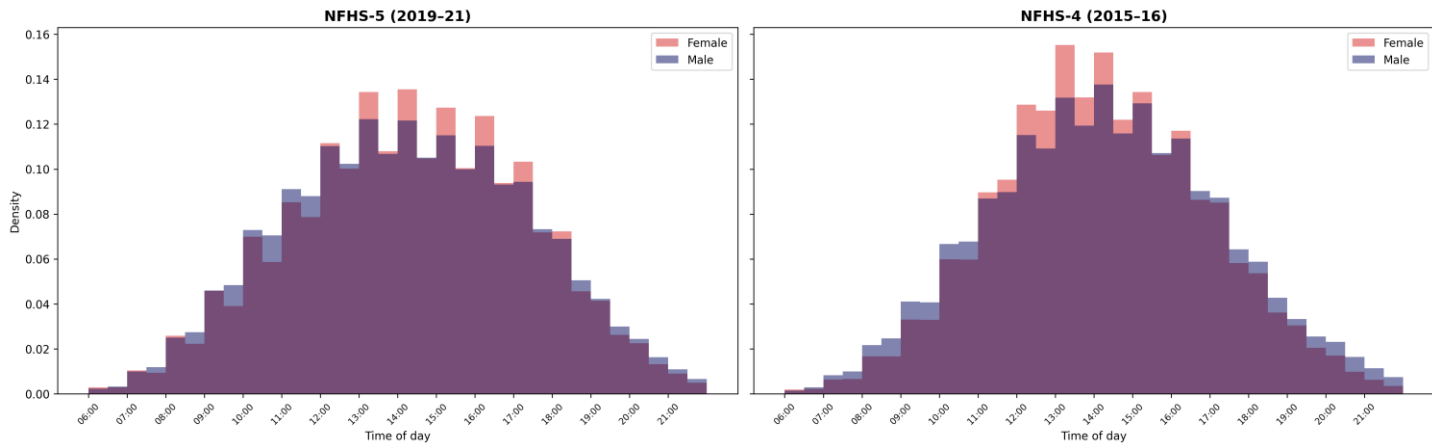
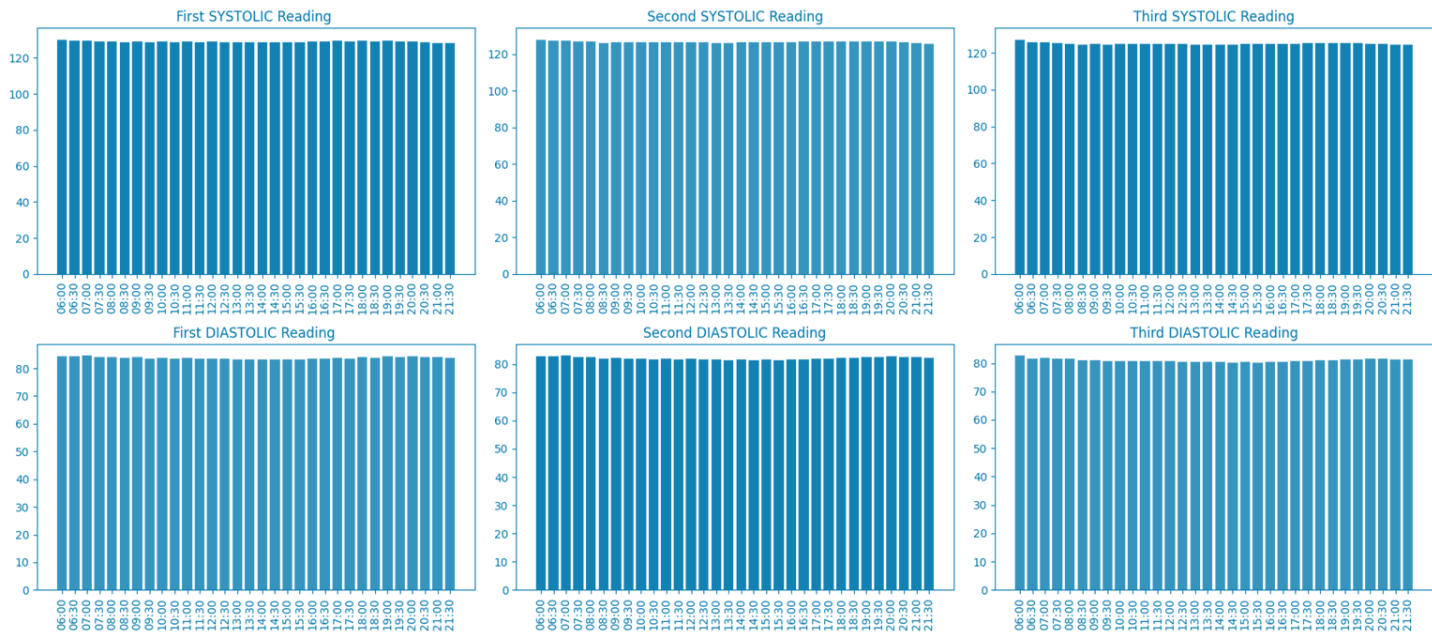


Figure s2: distributions of male SBP and DBP readings, as well as the difference between the readings from NFHS-5 data

### Time of First BP Reading



### MEAN MALE BP READINGS BY THE TIME OF DAY



### MEAN FEMALE BP READINGS BY THE TIME OF DAY

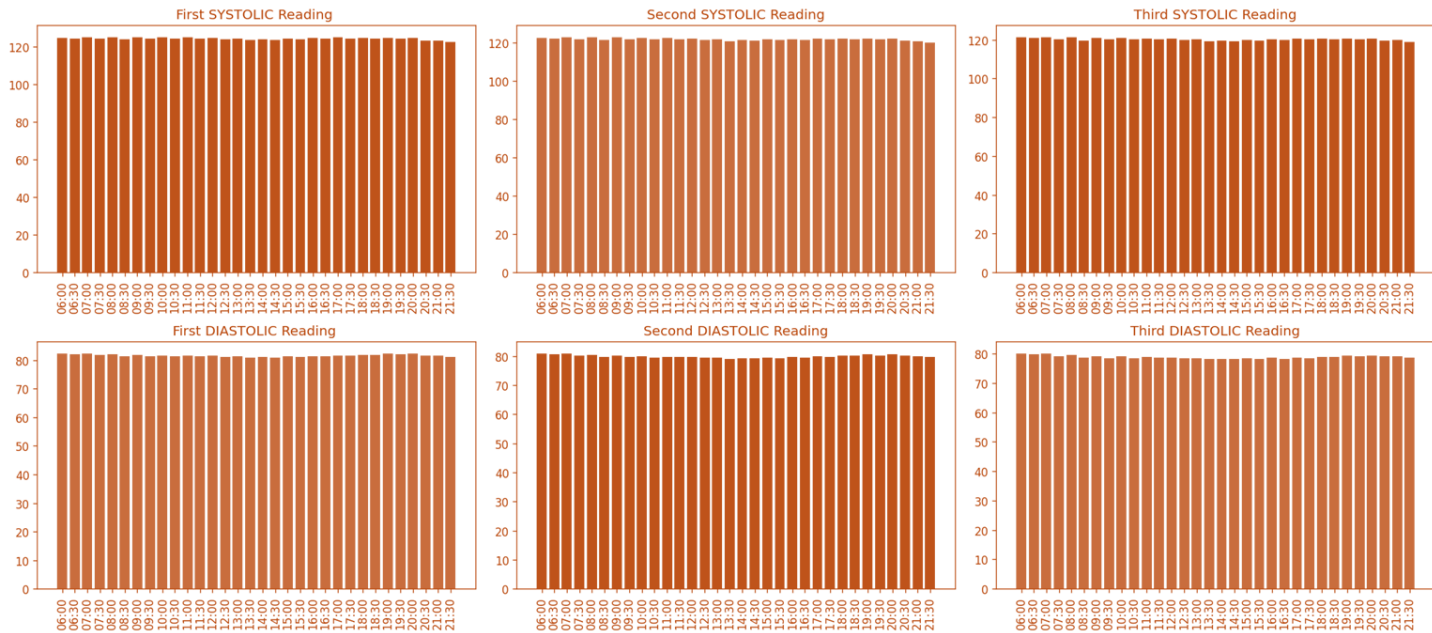
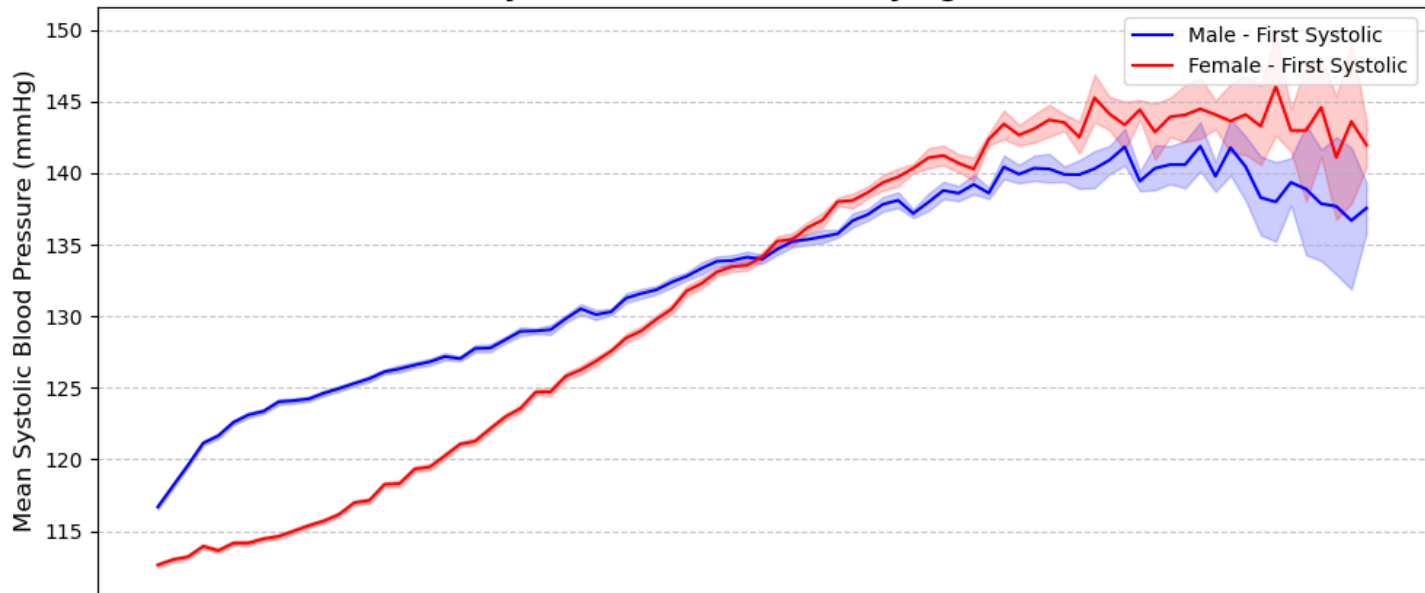
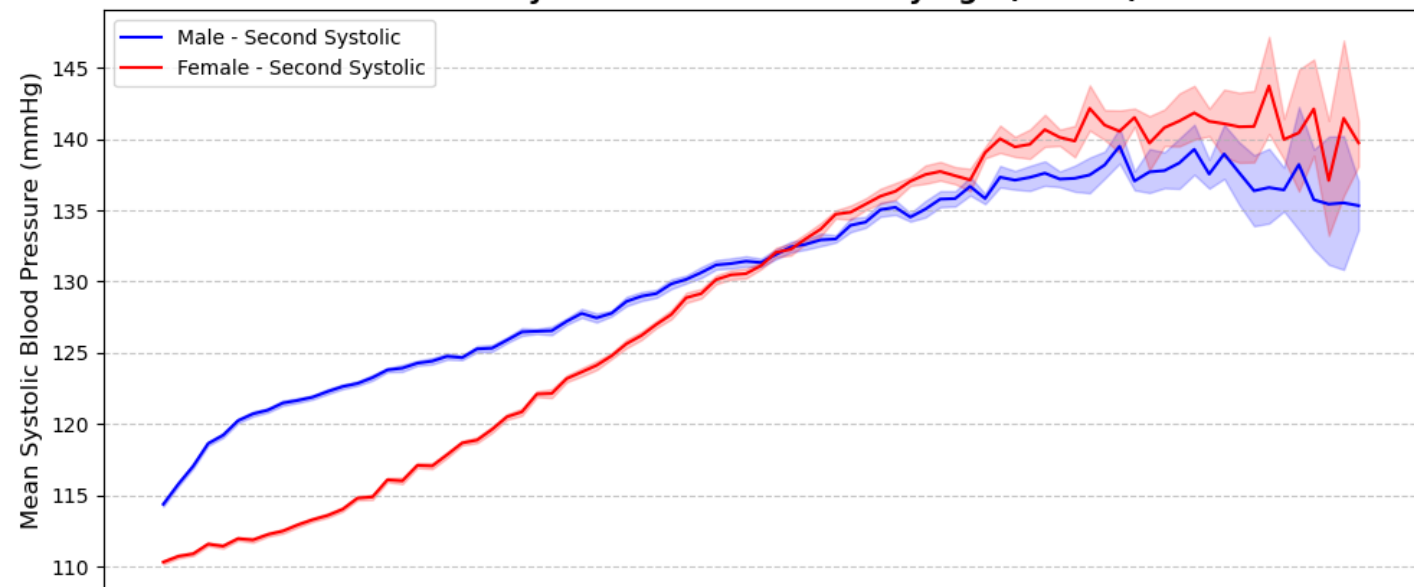


Figure s3: distributions of BP readings by the time of day , as well as mean BP readings by time of day from NFHS-5 data

**First Systolic Blood Pressure by Age (95% CI)**



**Second Systolic Blood Pressure by Age (95% CI)**



**Third Systolic Blood Pressure by Age (95% CI)**

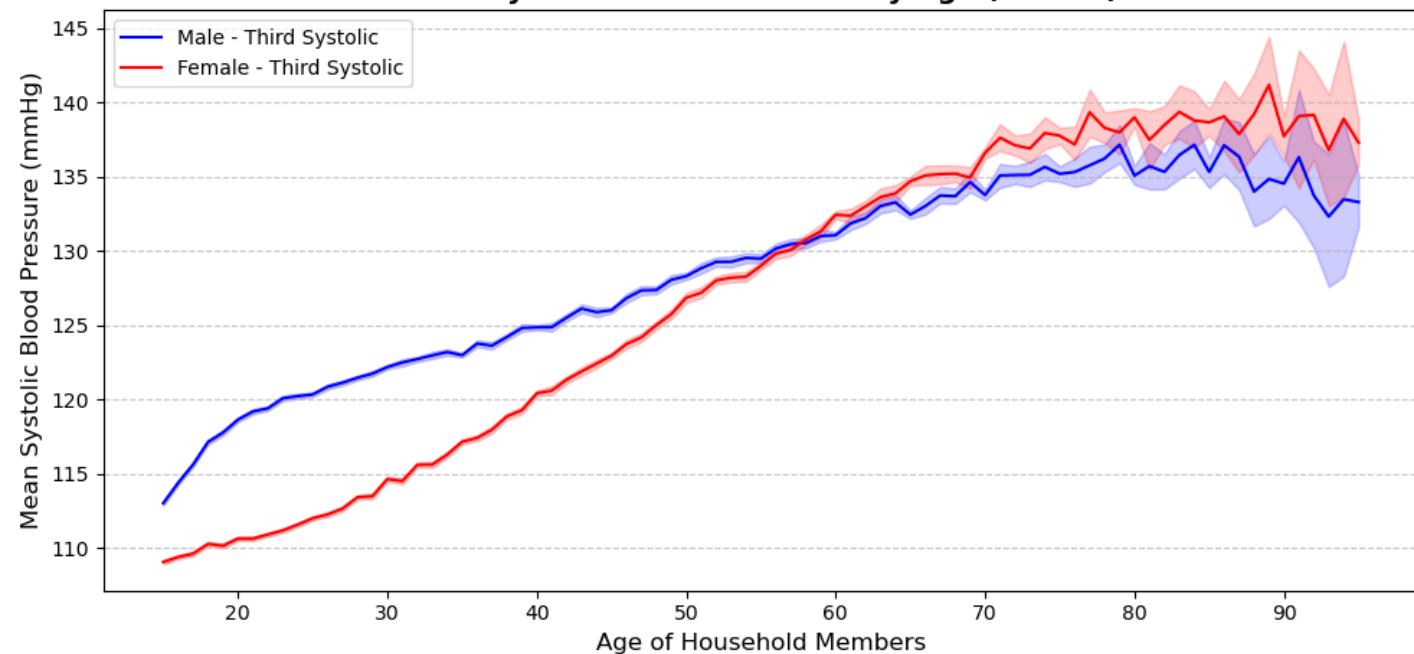
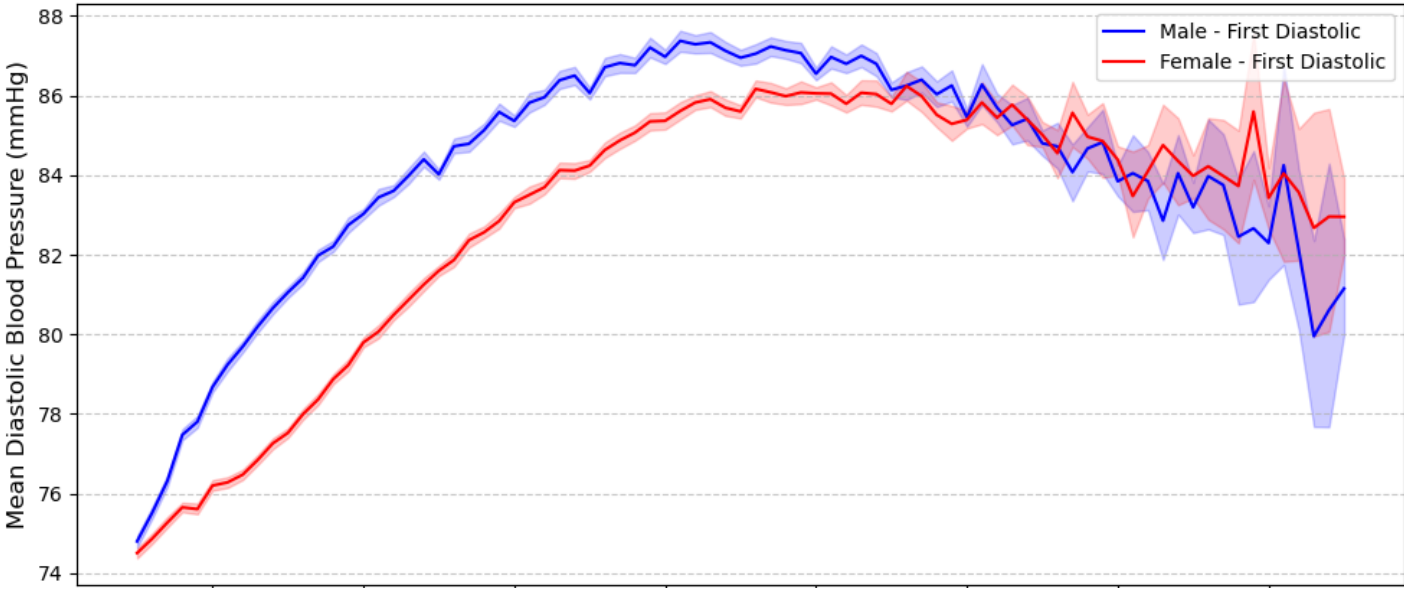
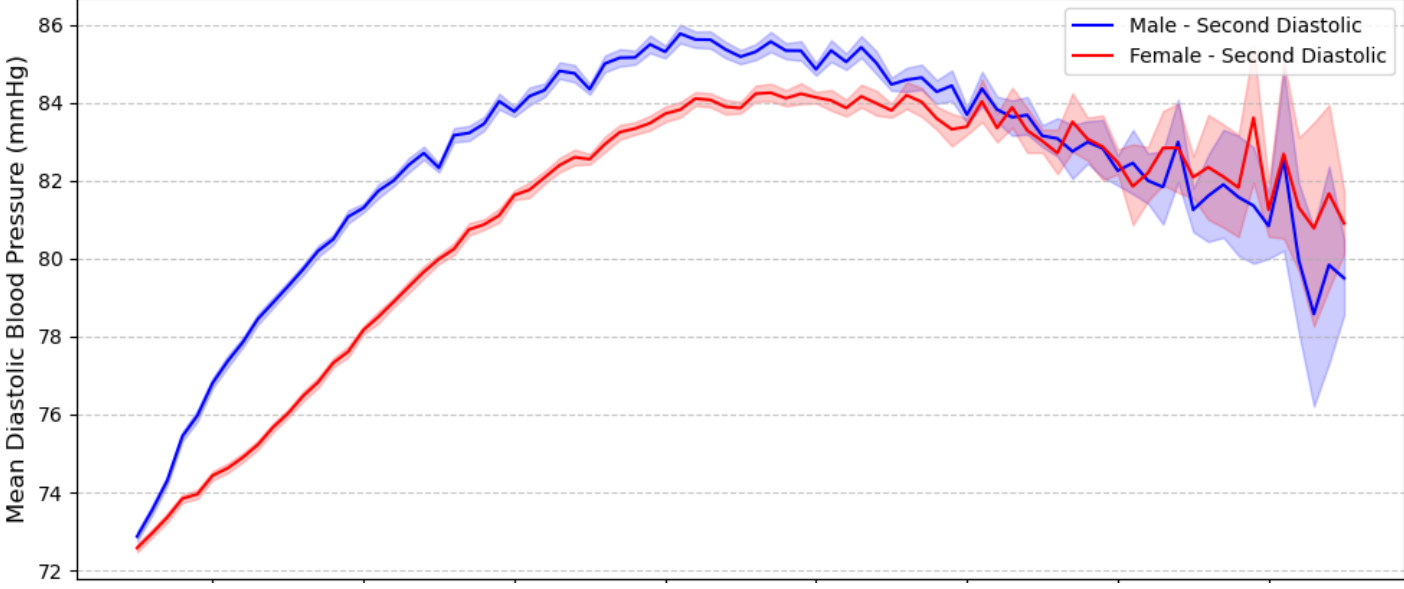


Figure s4: SBP reading with respect to age from NFHS-5 data

First Diastolic Blood Pressure by Age (95% CI)



Second Diastolic Blood Pressure by Age (95% CI)



Third Diastolic Blood Pressure by Age (95% CI)

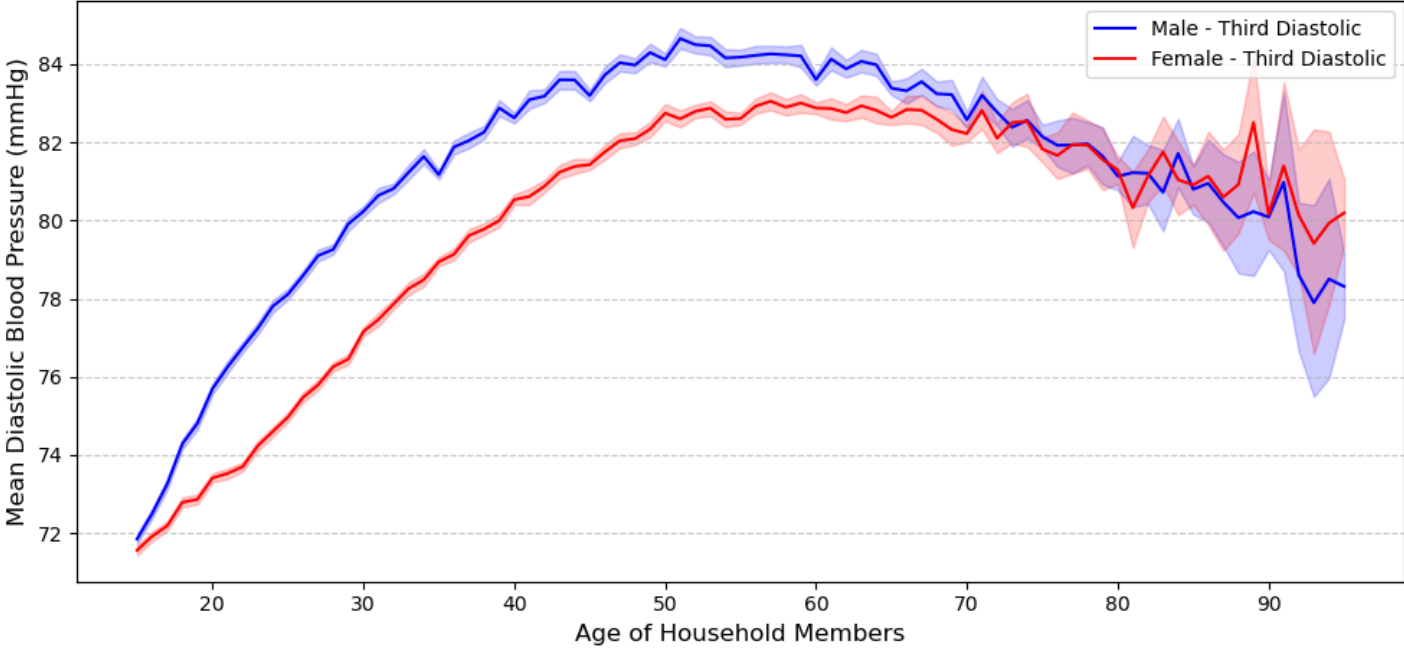
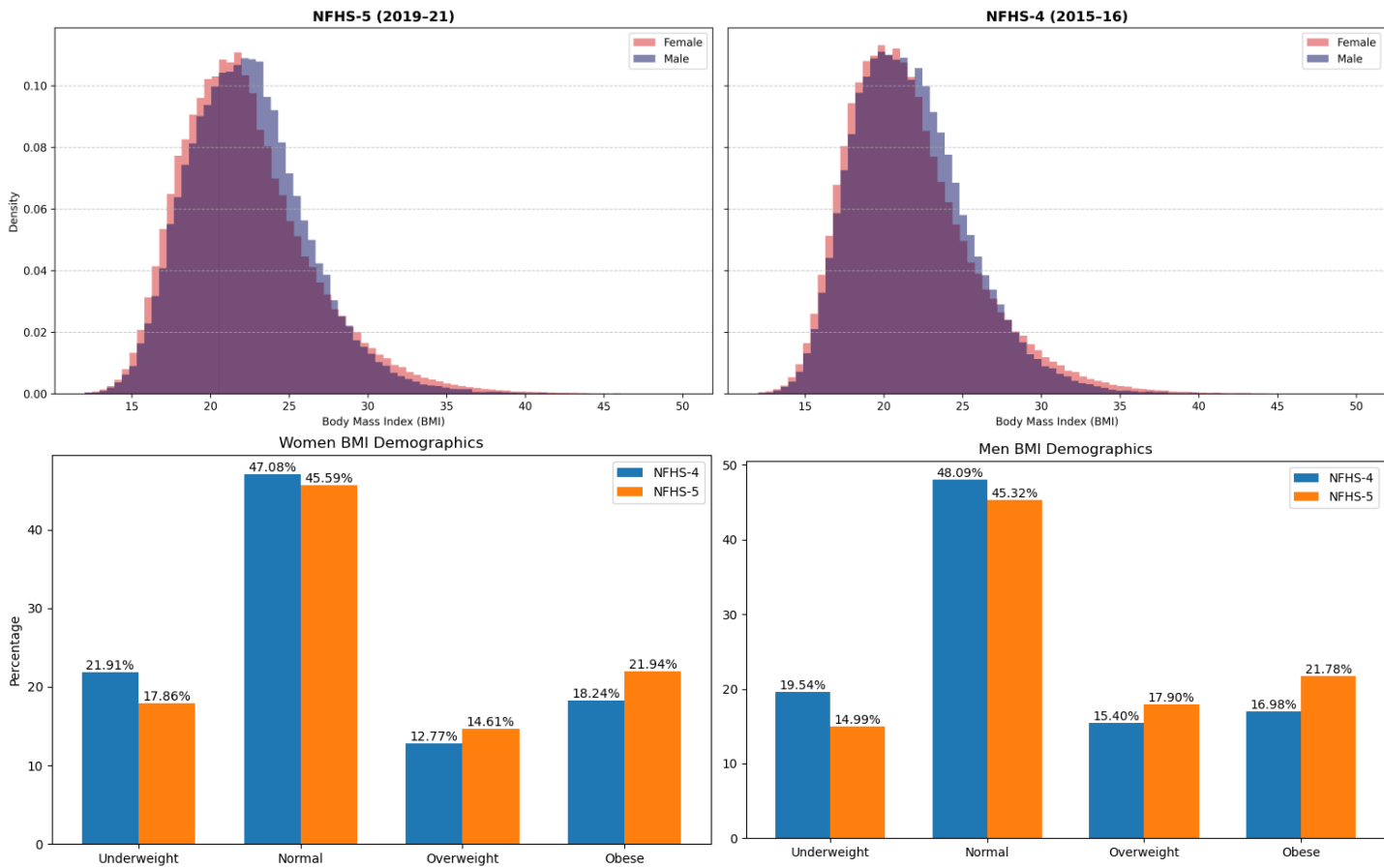


Figure s5: DBP reading with respect to age from NFHS-5 data

### BMI Distribution: Male vs Female



### BMI & Waist Circumference – Correlation Matrix

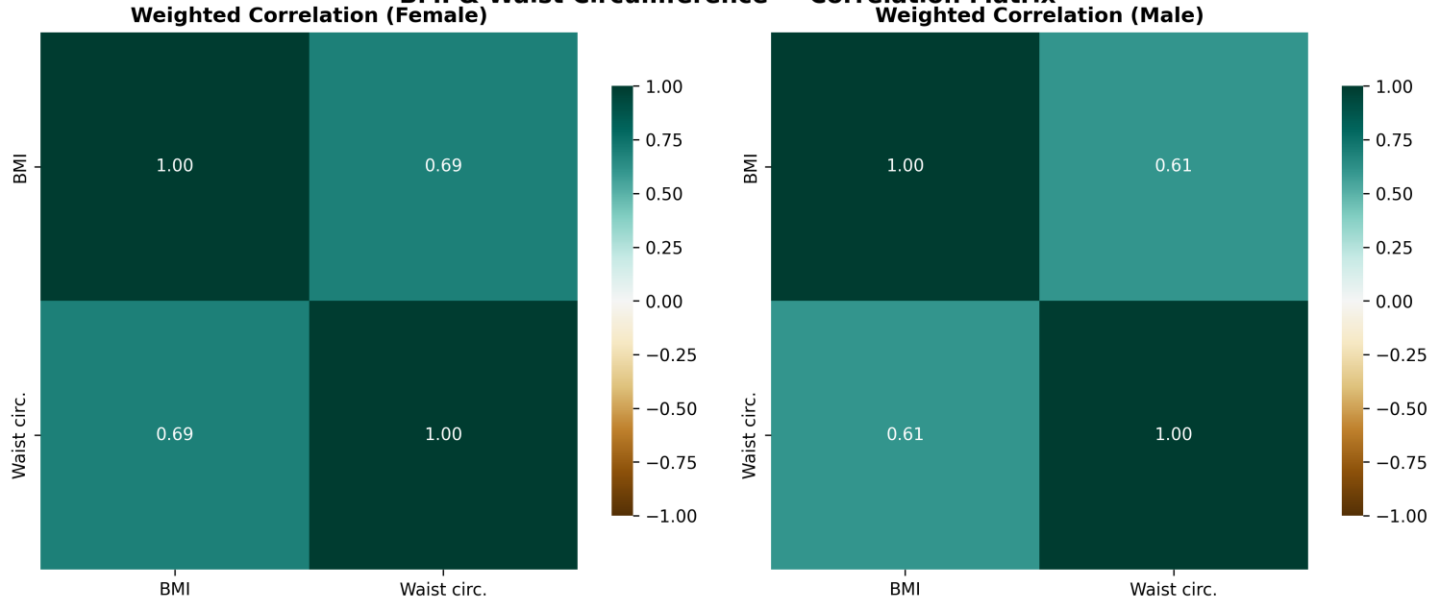


Figure s6: BMI distributions from NFHS-5 data and correlation between BMI and waist circumference in males and females.

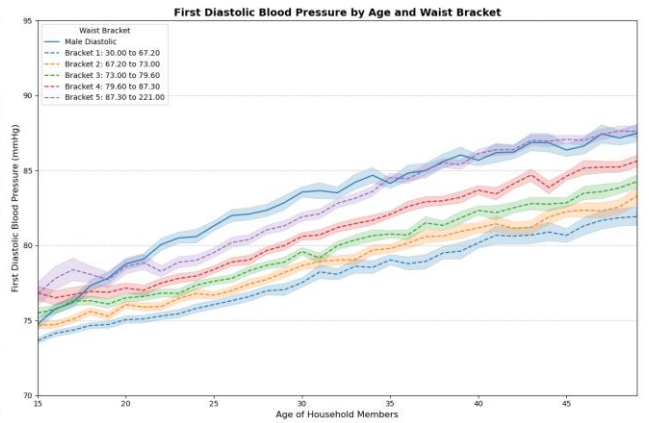
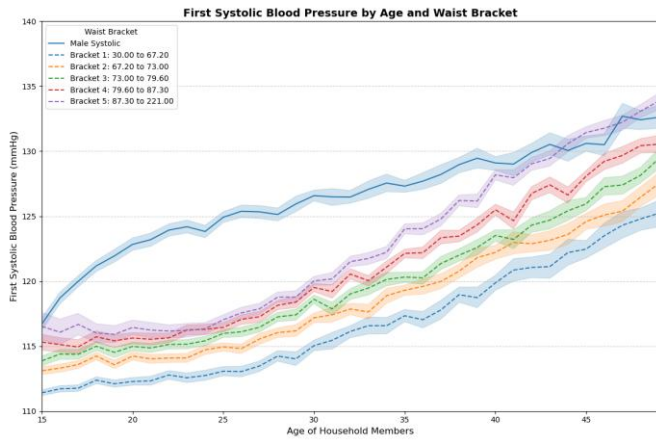
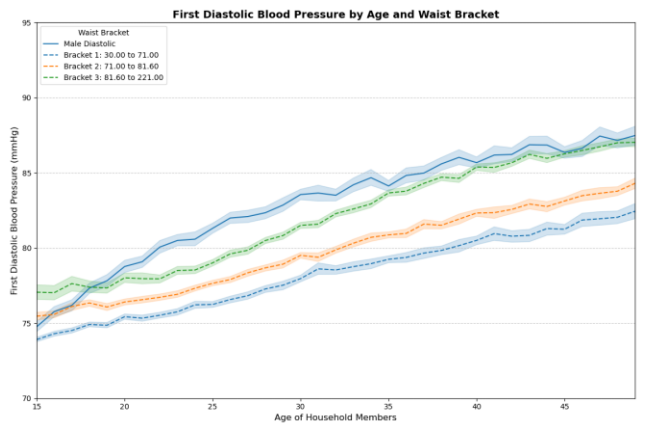
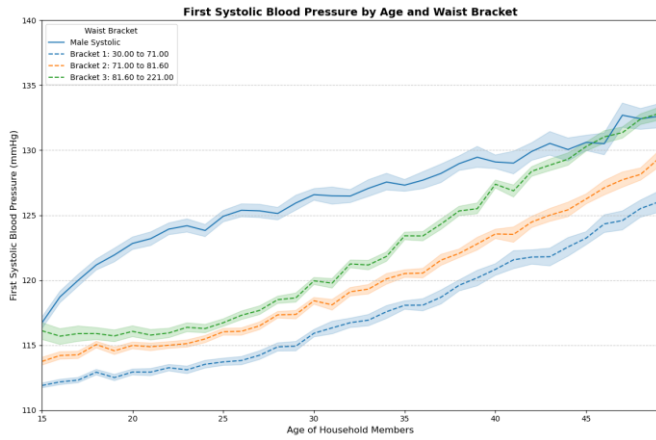
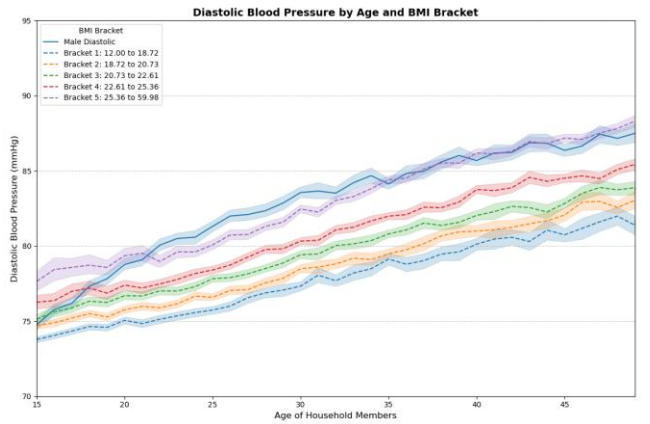
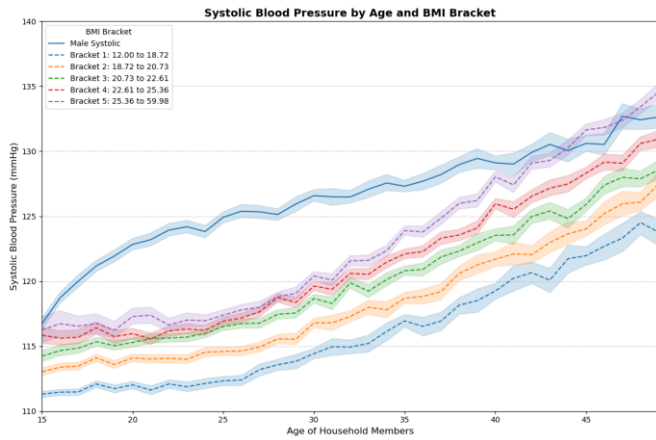
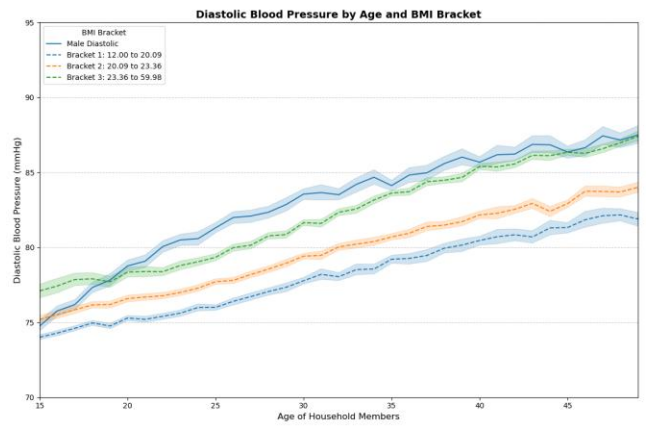
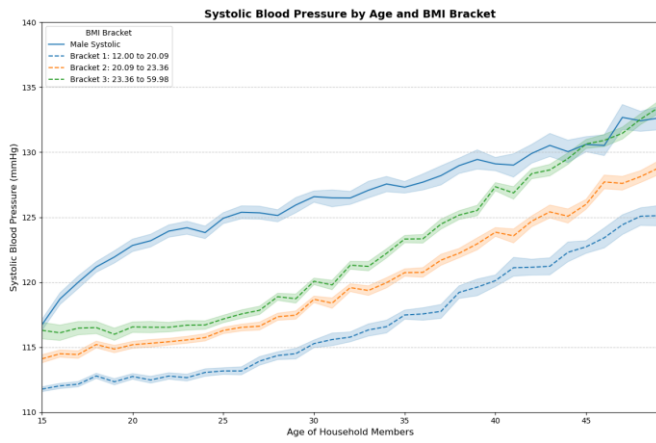
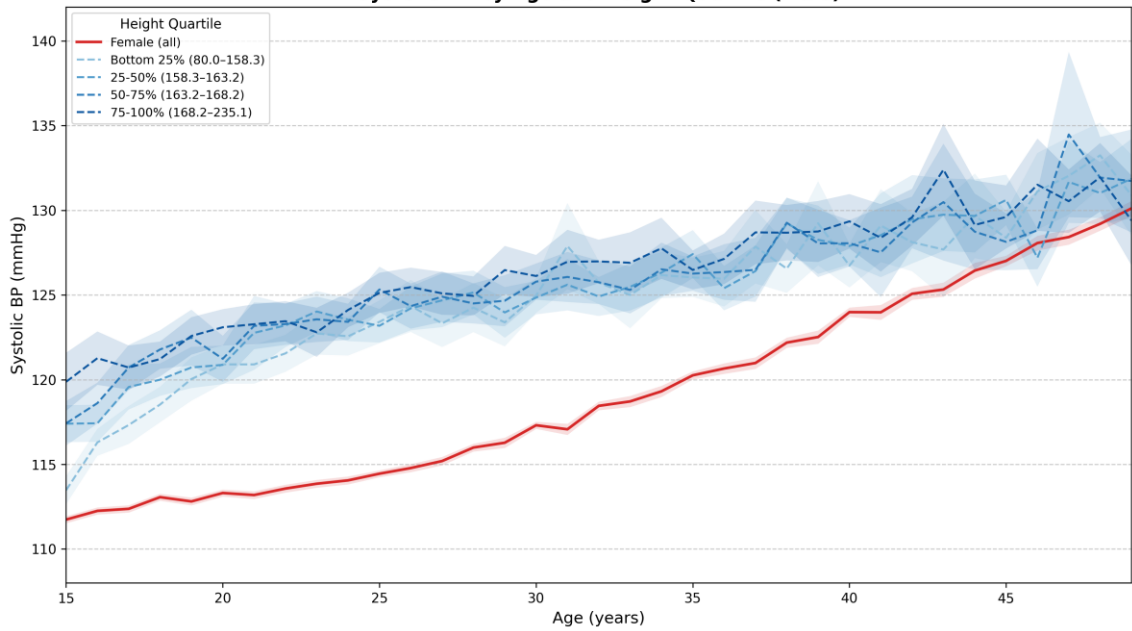
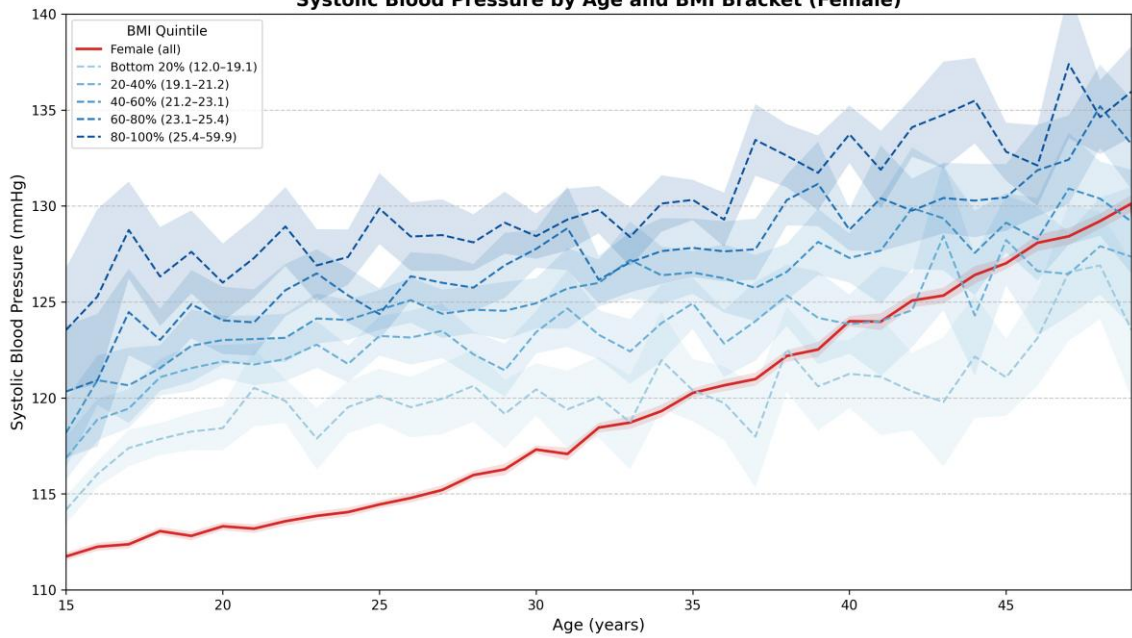


Figure s7: SBP reading with respect to BMI and waist circumference brackets in females from NFHS-5 data

Systolic BP by Age and Height Quartile (Male)



Systolic Blood Pressure by Age and BMI Bracket (Female)



First Systolic Blood Pressure by Age and Waist Bracket (Female)

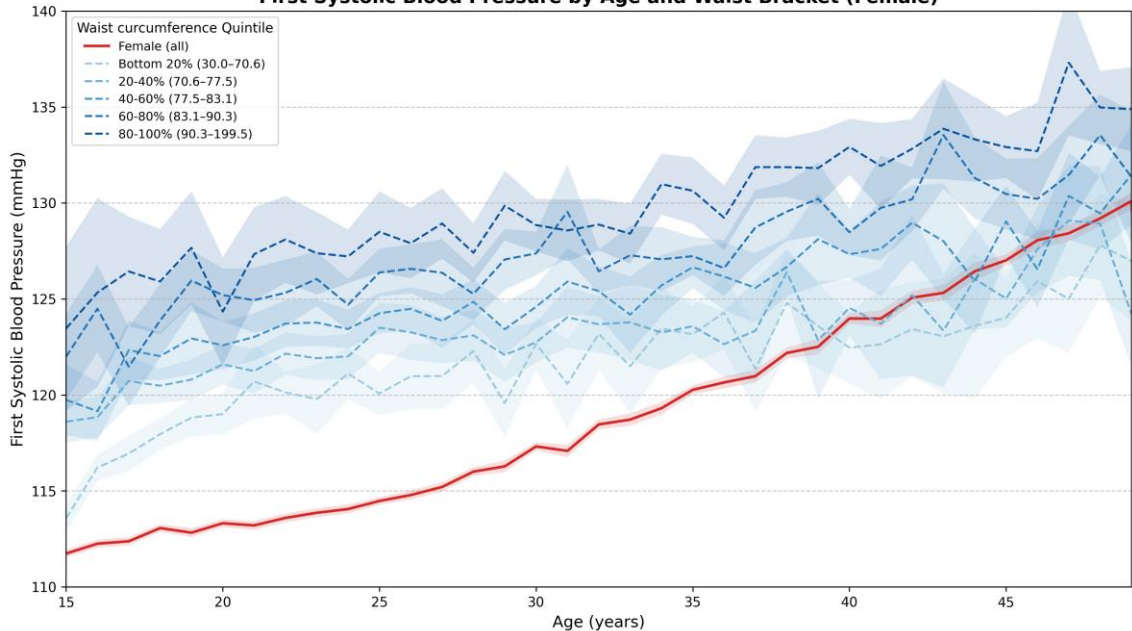
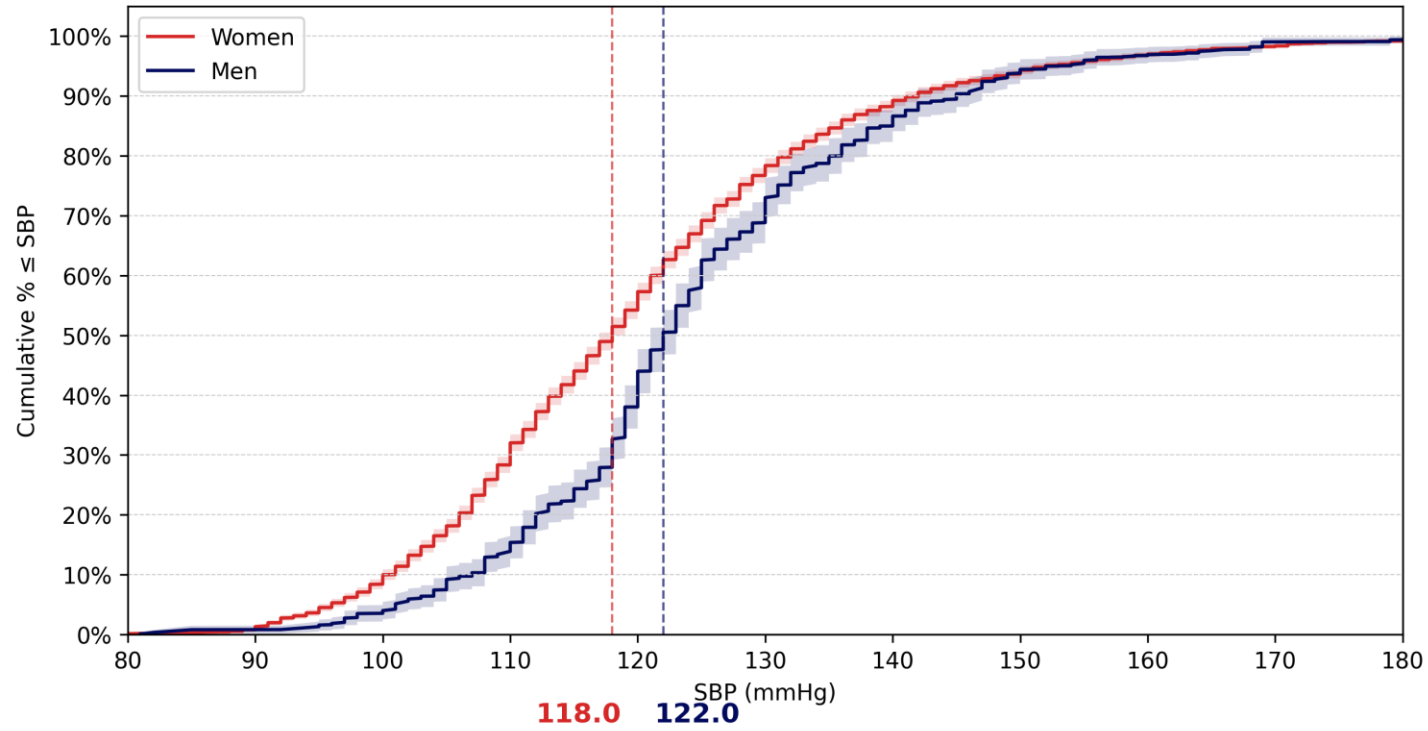


Figure s8: SBP reading with respect to BMI and waist circumference brackets in males from NFHS-5 data

**Cumulative SBP – Chronic Kidney Disease (95% CI)**



**Cumulative SBP – Chronic Respiratory Disease (95% CI)**

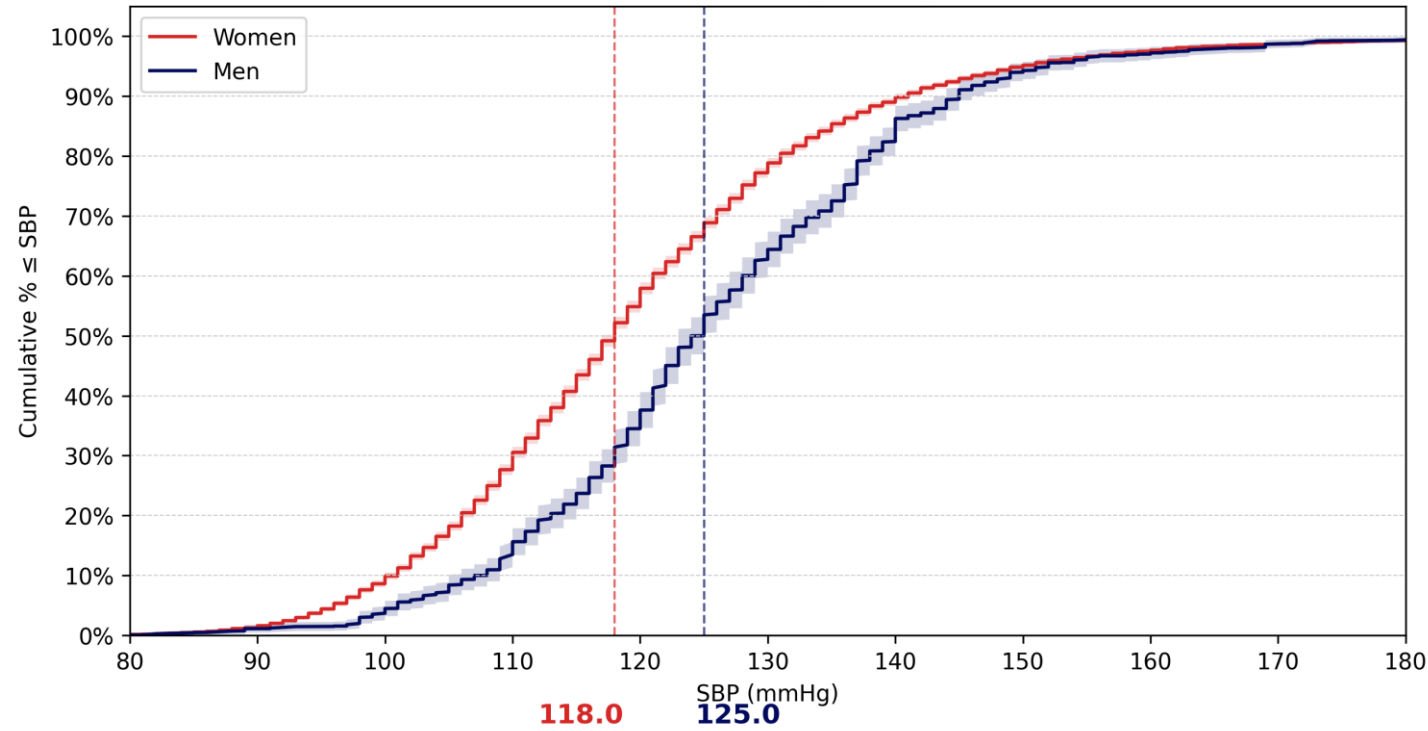
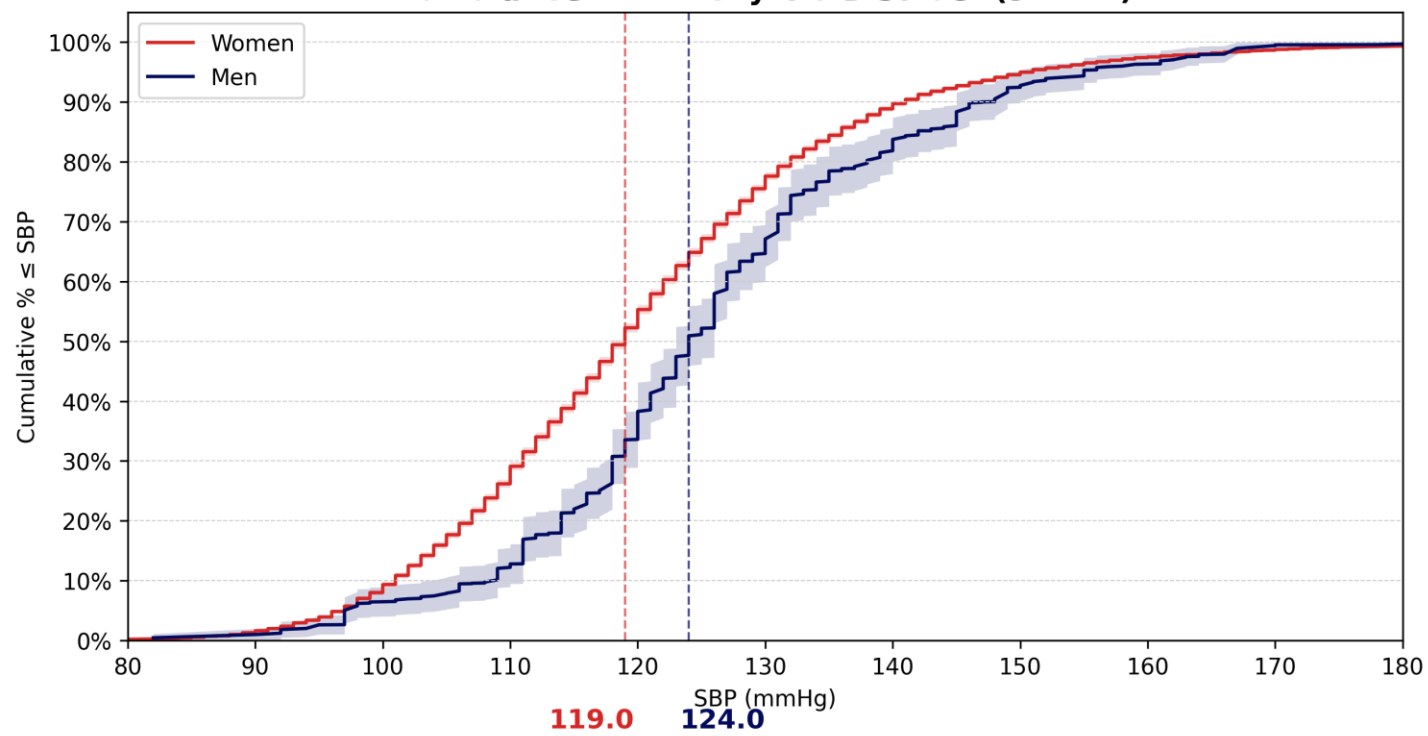


Figure s9: cumulative fraction of chronic kidney disease and chronic respiratory disease with respect to SBP from NFHS-5 data

**Cumulative SBP — Thyroid Disorder (95% CI)**



**Cumulative SBP — Cancer (95% CI)**

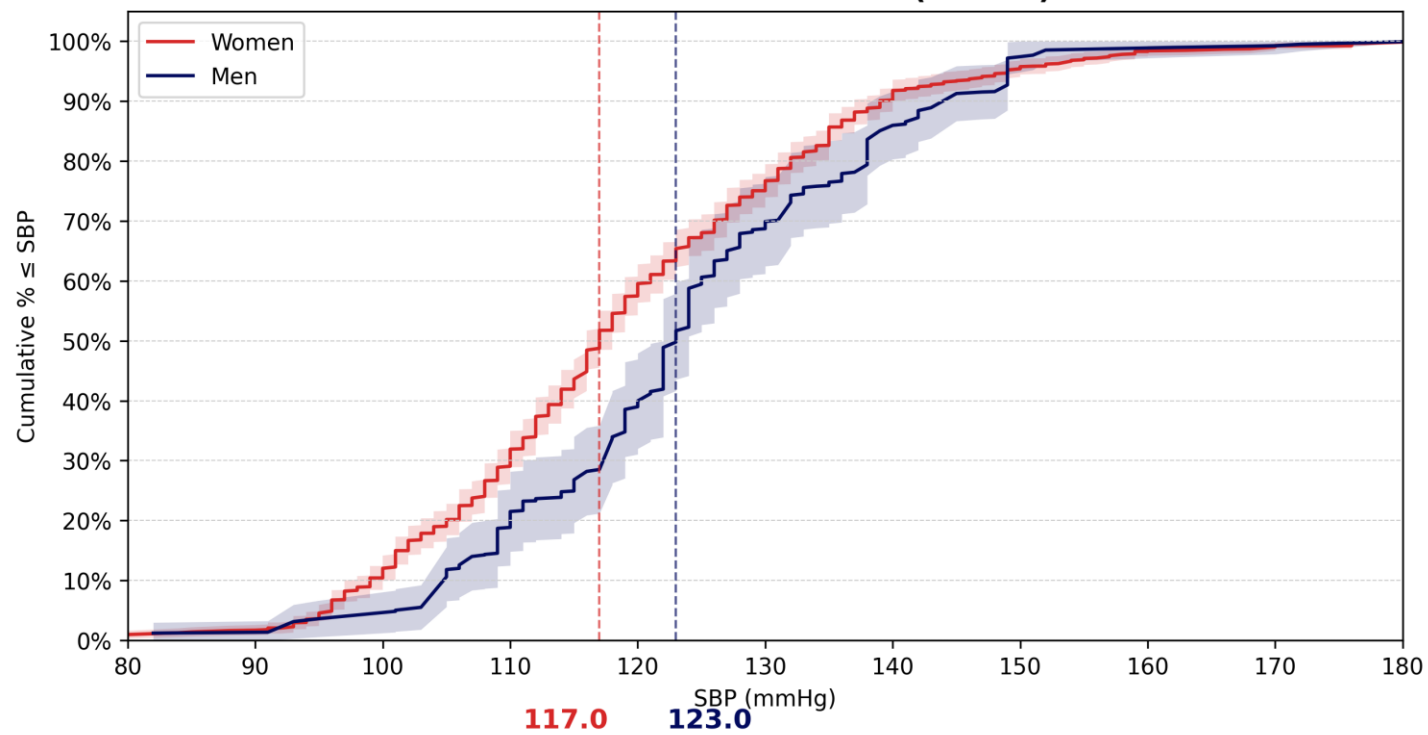


Figure s10: cumulative fraction of thyroid disorder and cancer with respect to SBP from NFHS-5 data

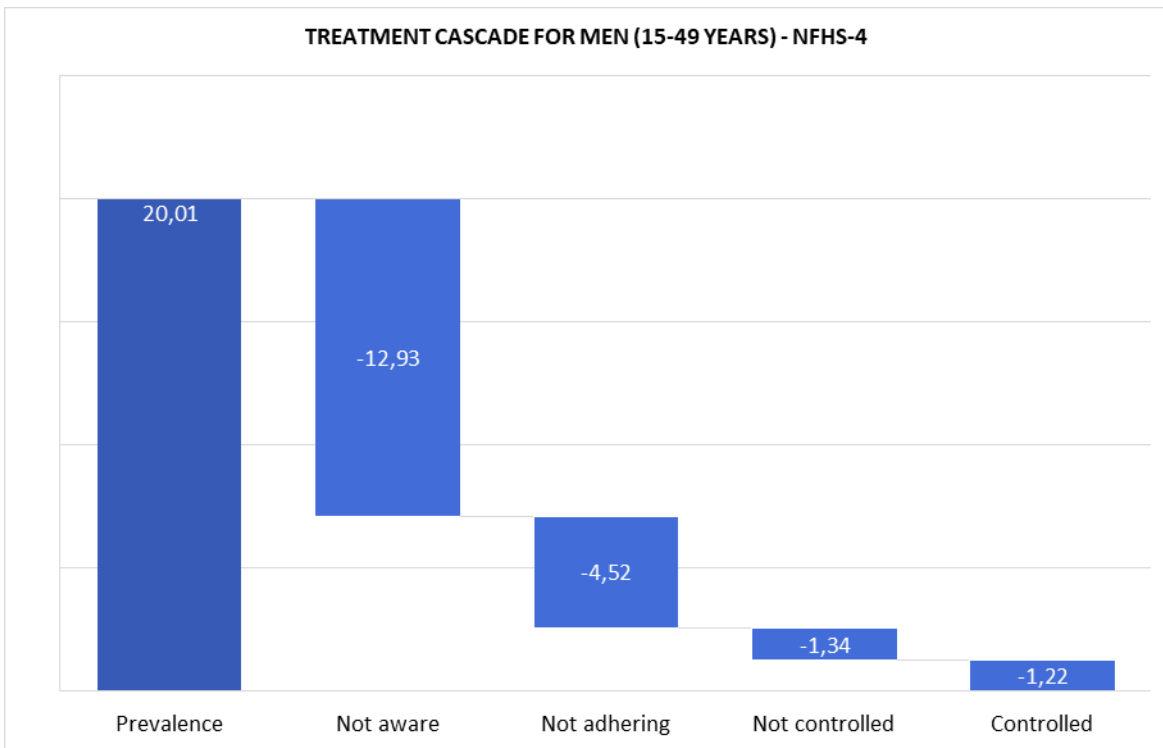
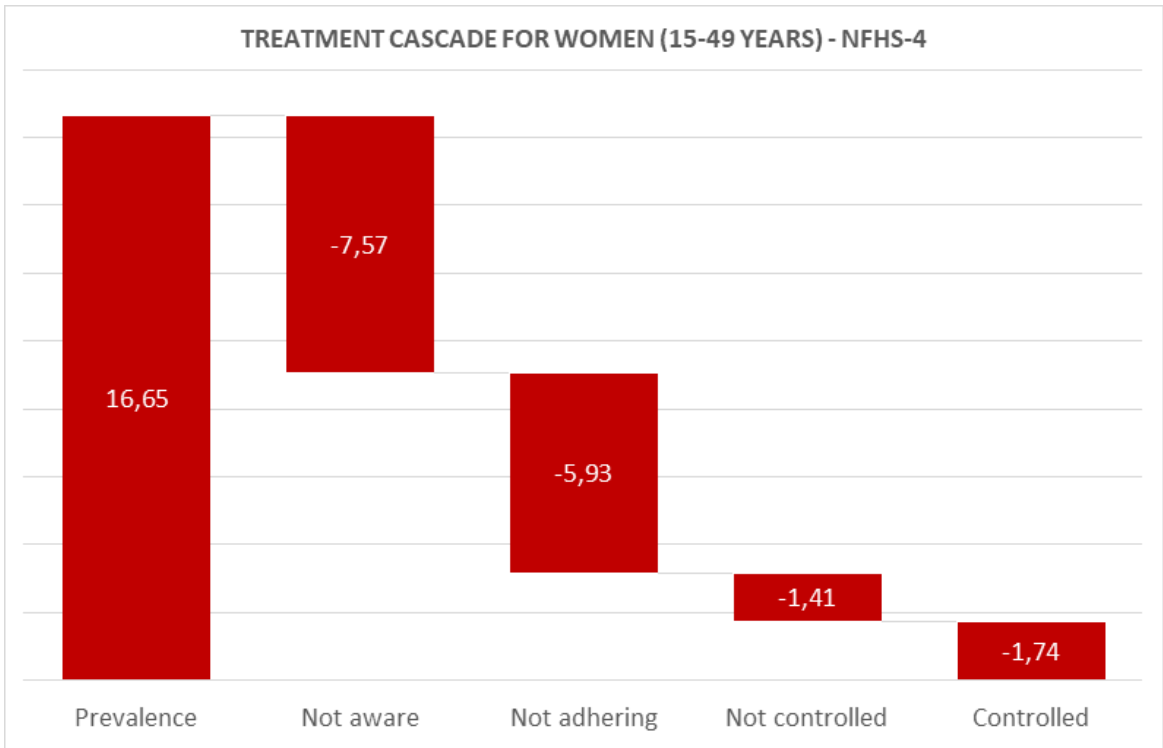


Figure s11: treatment cascade for females and males from NFHS-4 data