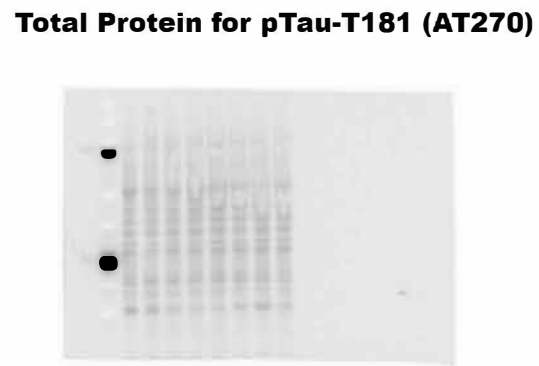
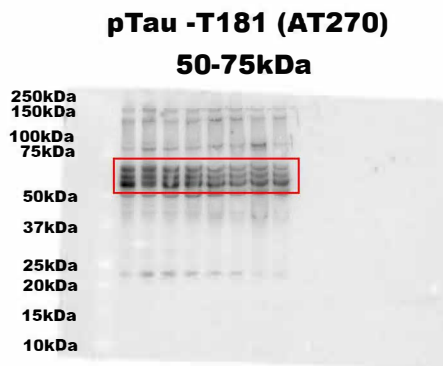
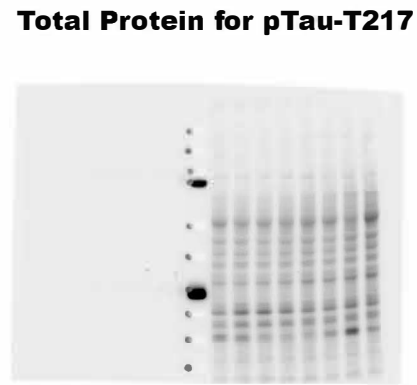
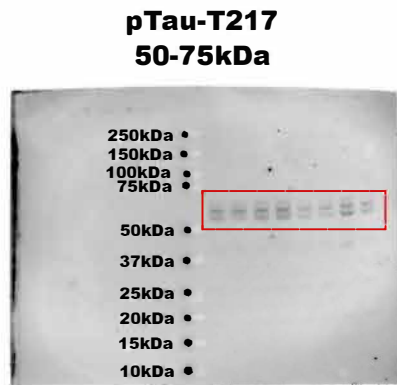
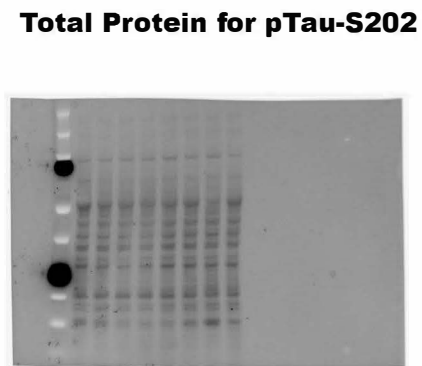
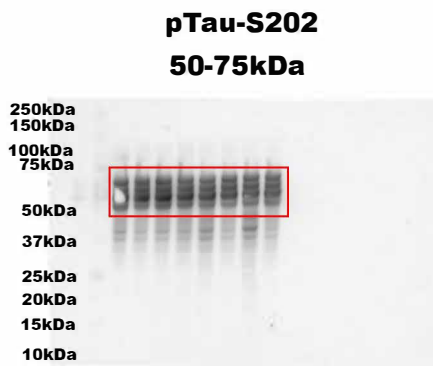
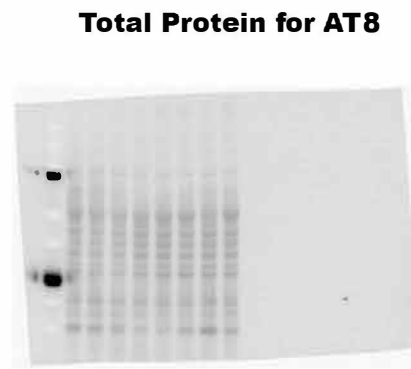
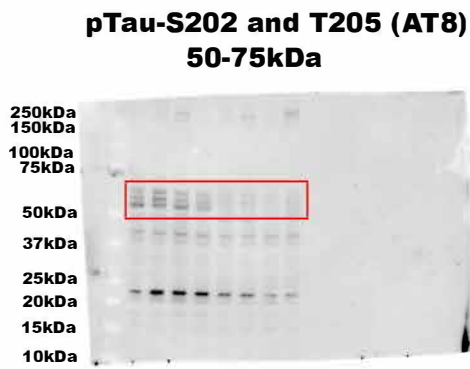


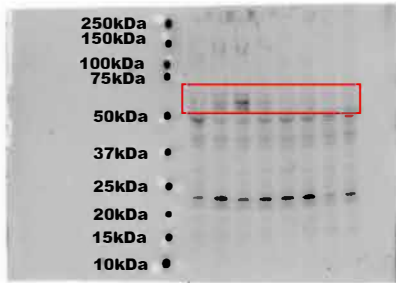
# Frontal Cortex



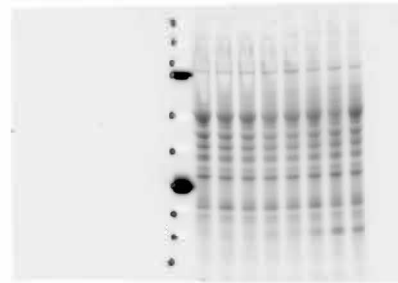
**Supplemental Figure 1:** Images of the full-length blots for pTau-S202-T205, pTau-S202, pTau-T217 and pTau-T181 in Frontal Cortex along with their associated Total Protein stains. Blots correspond to the cropped images in Figure 1.

# Hippocampus

**pTau-S202 T205 (AT8)**  
**50-75kDa**



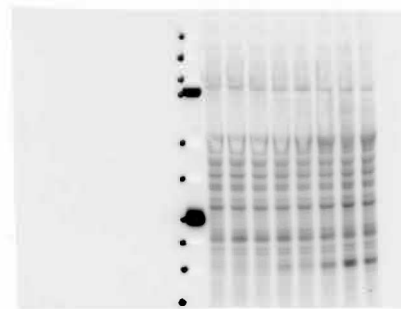
**Total Protein for AT8**



**pTau-S202**  
**50-75kDa**



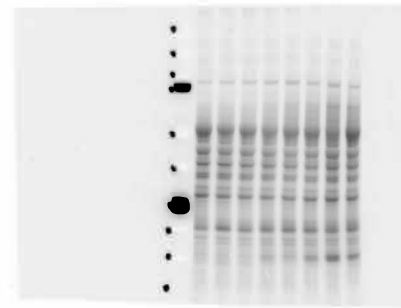
**Total Protein for pTau S202**



**pTau-T217**  
**50-75kDa**



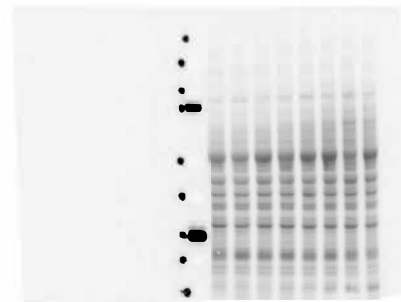
**Total Protein for T217**



**pTau-T181**  
**50-75kDa**

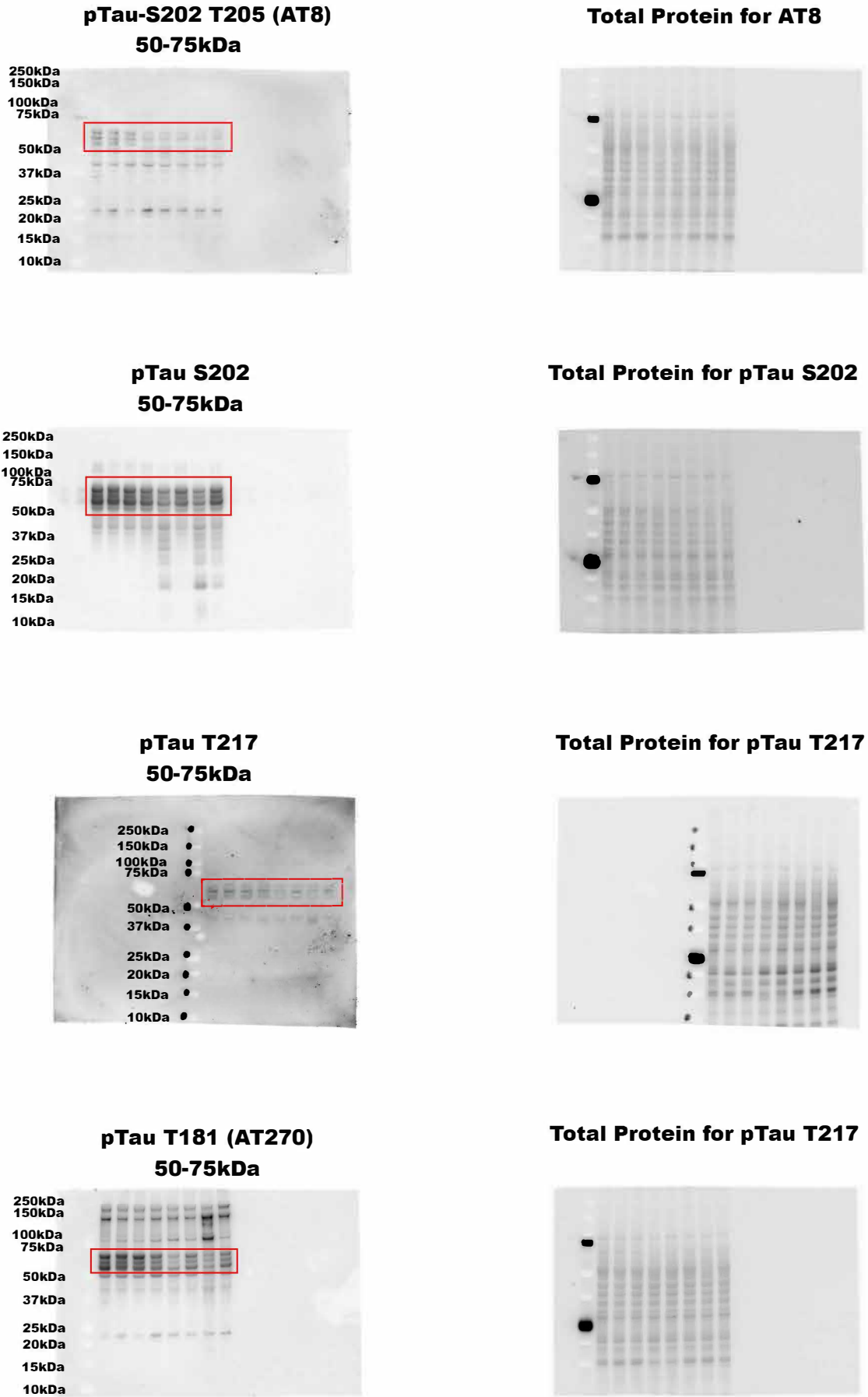


**Total Protein for T181**



**Supplemental Figure 2:** Images of the full-length blots for pTau-S202-T205, pTau-S202, pTau-T217 and pTau-T181 in Hippocampus along with their associated Total Protein stains. Blots correspond to the cropped images in Figure 1.

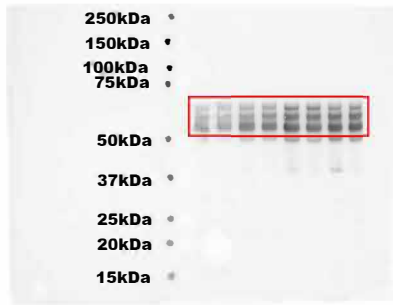
# Cerebellum



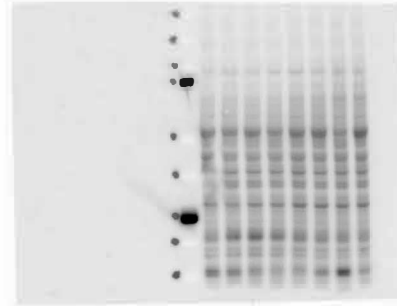
**Supplemental Figure 3:** Images of the full-length blots for pTau-S202-T205, pTau-S202, pTau-T217 and pTau-T181 in Cerebellum along with their associated Total Protein stains. Blots correspond to the cropped images in Figure 1.

# Frontal Cortex

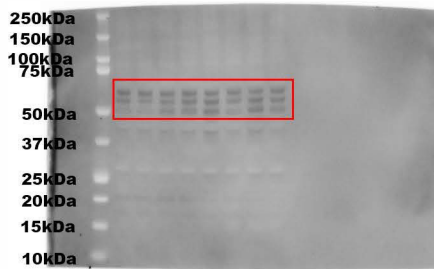
## HT7 50-75kDa



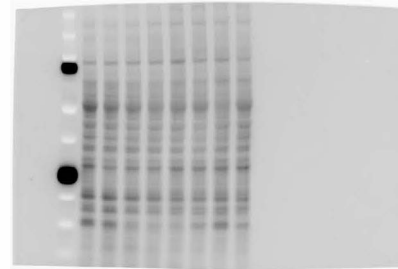
## Total Protein for HT7



## 3R-Tau 50-75kDa



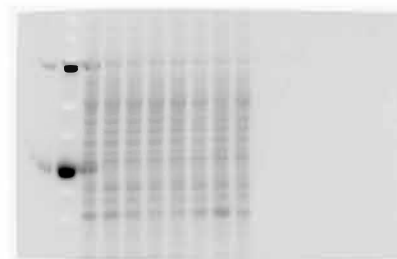
## Total Protein for 3R-Tau



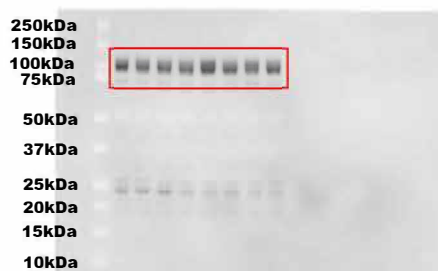
## 4R-Tau 50-75kDa



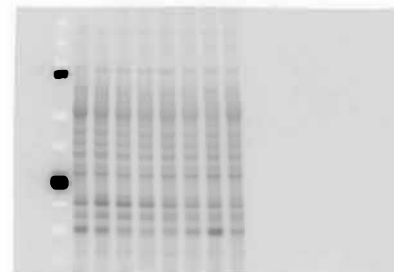
## Total Protein for 4R-Tau



## APP 110kDa

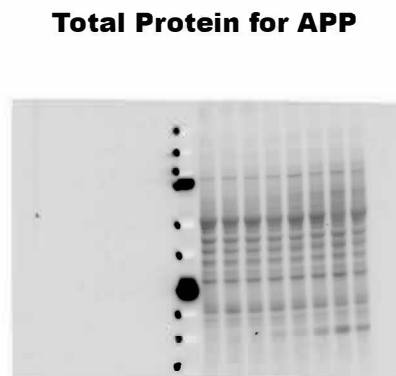
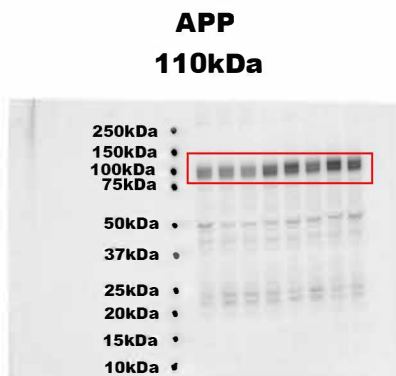
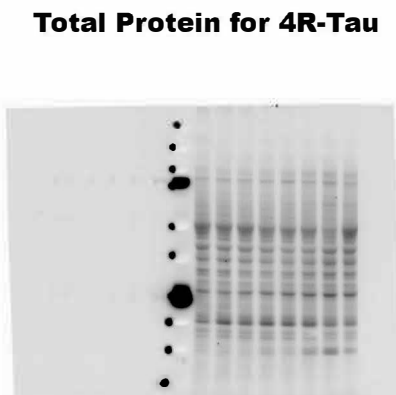
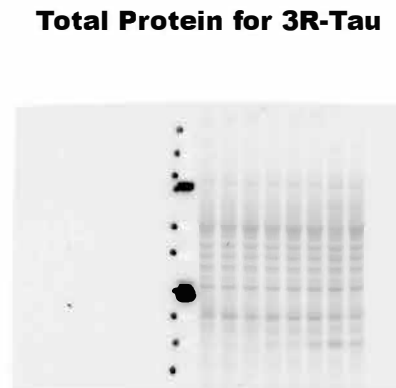
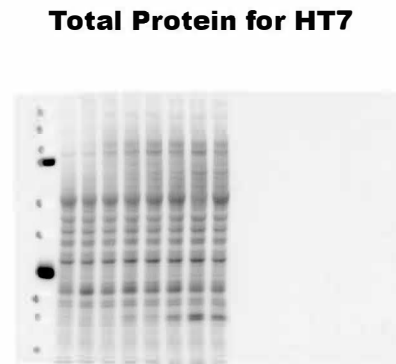
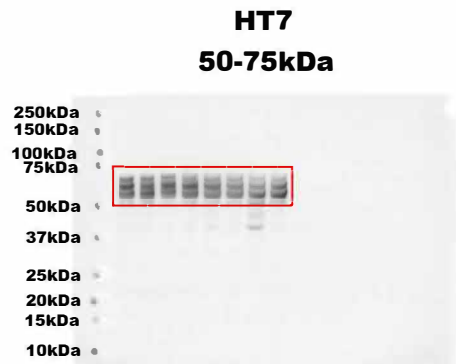


## Total Protein for APP



**Supplemental Figure 4:** Images of the full-length blots for HT7, 3RTau, 4RTau and APP in Frontal Cortex along with their associated Total Protein stains. Blots correspond to the cropped images in Figure 2.

# Hippocampus

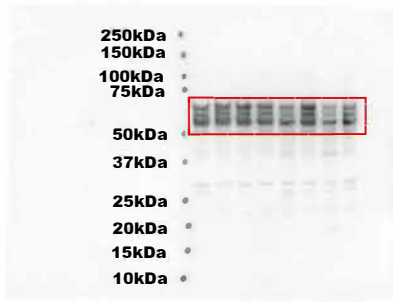


**Supplemental Figure 5:** Images of the full-length blots for HT7, 3RTau, 4RTau and APP in Hippocampus along with their associated Total Protein stains. Blots correspond to the cropped images in Figure 2.

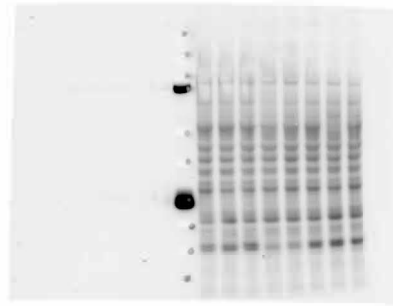
# Cerebellum

## HT7

50-75kDa

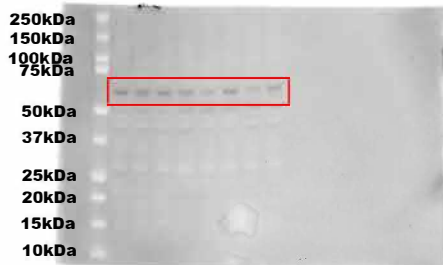


## Total Protein for HT7

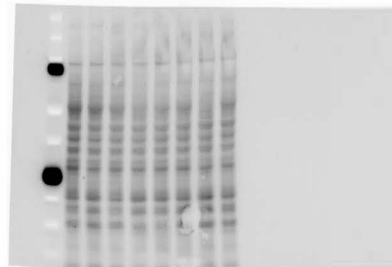


## 3R-Tau

50-75kDa

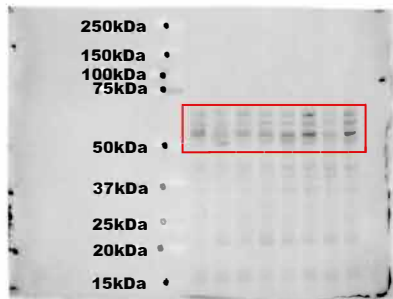


## Total Protein for 3R-Tau

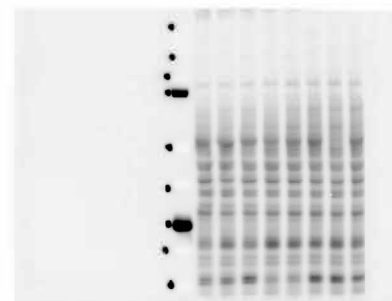


## 4R-Tau

50-75kDa

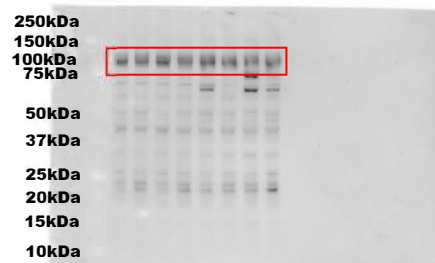


## Total Protein for 4R-Tau

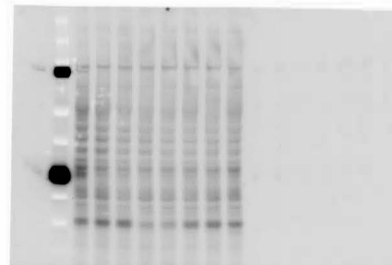


## APP

110kDa



## Total Protein for APP



**Supplemental Figure 6:** Images of the full-length blots for HT7, 3RTau, 4RTau and APP in Cerebellum along with their associated Total Protein stains. Blots correspond to the cropped images in Figure 2.

# Frontal Cortex

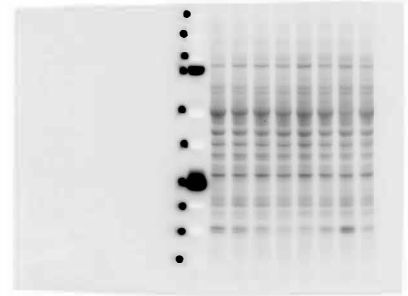
## GFAP 50kDa



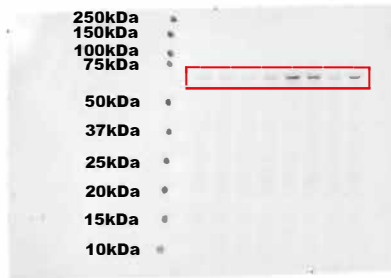
## IBA1 17kDa



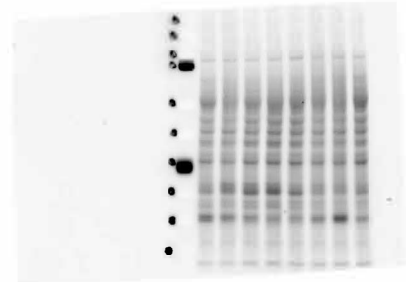
## Total Protein for FCtx GFAP and IBA1



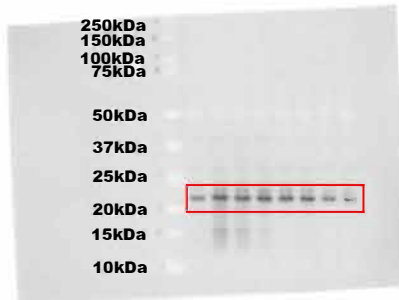
## NFL 68kDa



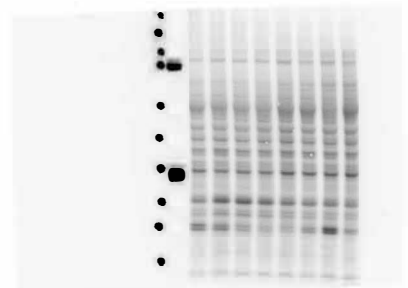
## Total Protein for NFL



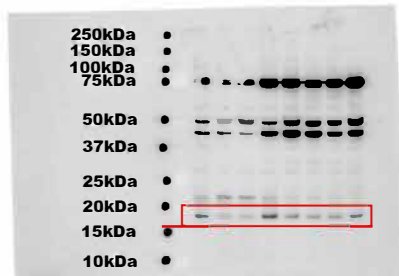
## MBP 22kDa



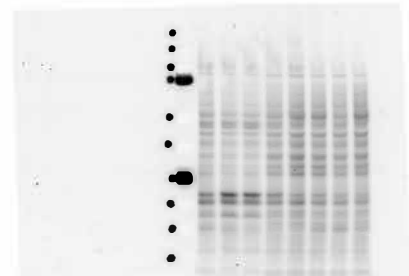
## Total Protein for MBP



## H2AX 16kDa



## Total Protein for H2AX



**Supplemental Figure 7:** Images of the full-length blots for GFAP, IBA1, NFL, MBP, H2AX in Frontal Cortex along with their associated Total Protein stains. Blots correspond to the cropped images in Figure 3.

# Hippocampus

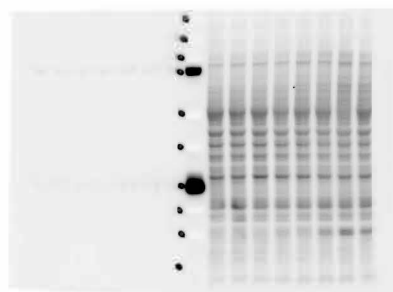
## GFAP 50kDa



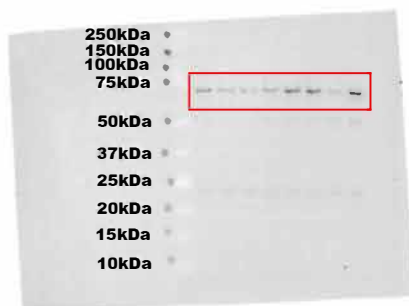
## IBA1 17kDa



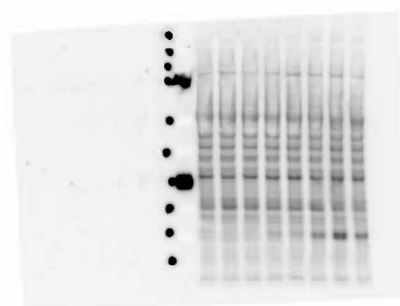
## Total Protein for Hip GFAP and IBA1



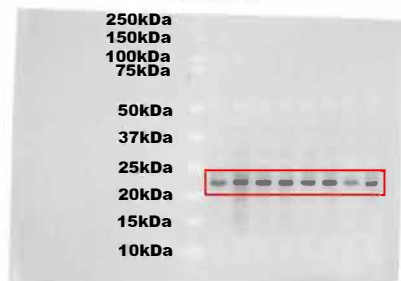
## NFL 68kDa



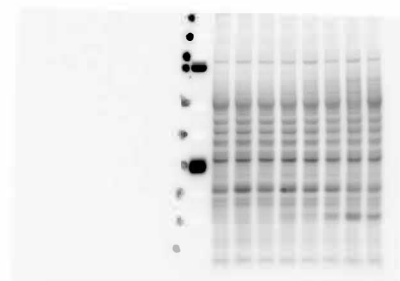
## Total Protein for NFL



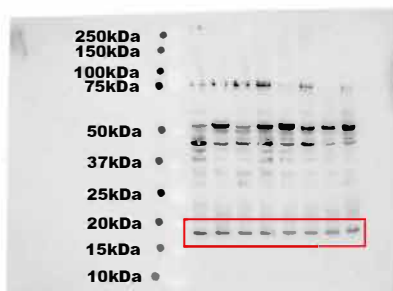
## MBP 22kDa



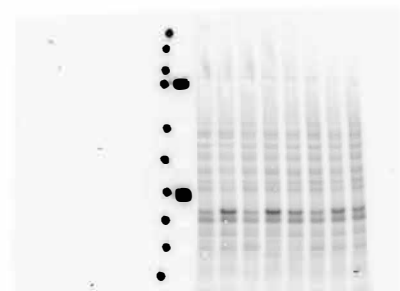
## Total Protein for MBP



## H2AX 16kDa



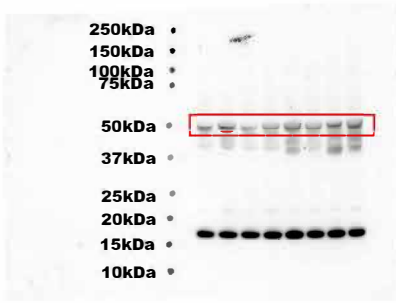
## Total Protein for H2AX



**Supplemental Figure 8:** Images of the full-length blots for HT7, 3RTau, 4RTau and APP in Hippocampus along with their associated Total Protein stains. Blots correspond to the cropped images in Figure 3.

# Cerebellum

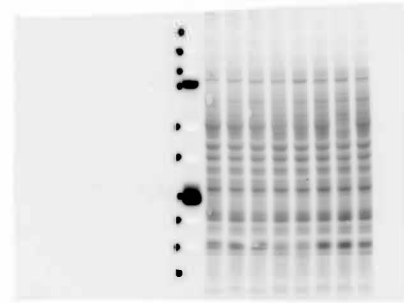
**GFAP**  
50kDa



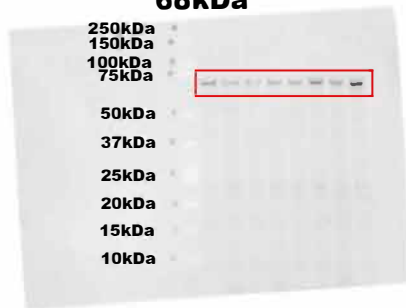
**IBA1**  
17kDa



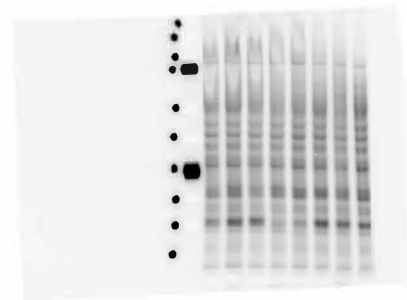
**Total Protein for Cere GFAP and IBA1**



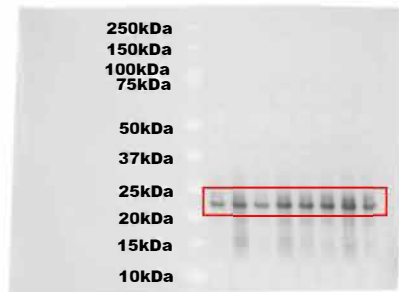
**NFL**  
68kDa



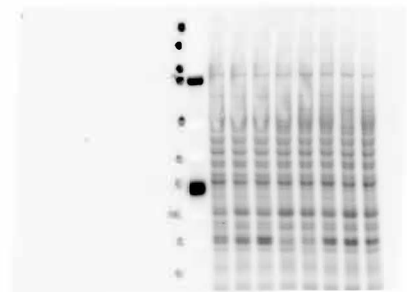
**Total Protein for NFL**



**MBP**  
22kDa



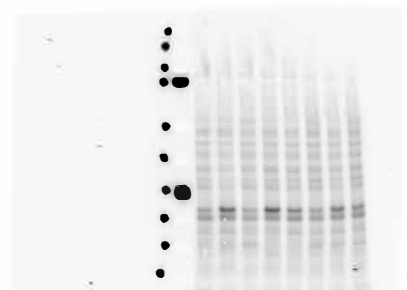
**Total Protein for MBP**



**H2AX**  
16kDa



**Total Protein for H2AX**

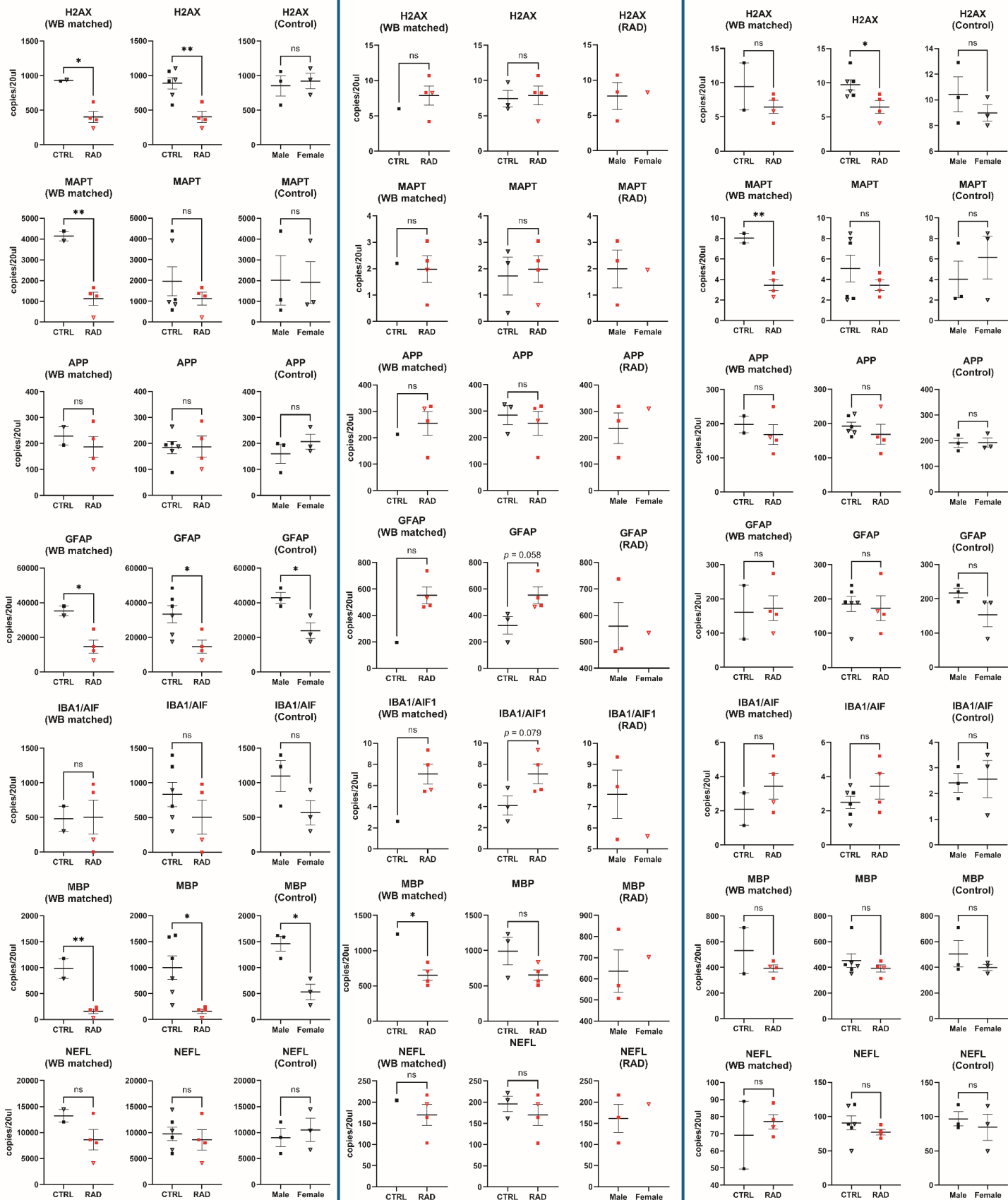


**Supplemental Figure 9:** Images of the full-length blots for HT7, 3RTau, 4RTau and APP in Cerebellum along with their associated Total Protein stains. Blots correspond to the cropped images in Figure 3.

## FCtx

## Hippo

## CRB



**Supplemental Figure 10:** dPCR results for all markers (H2AX, MAPT, APP, GFAP, IBA1, MBP, NEFL) for all regions (FCtx, Hippo, CRB). For each marker in each region, three graphs are presented to include only samples matched to WB results (left), all samples (middle), or samples to compare sex differences (right).