

All available data in this manuscript

Well	Fluor	Target	Sample	Cq	ΔCq	$\Delta\Delta Cq$
01	SYBR	Ctsk	WT	17.05		
02	SYBR	Ctsk	WT	17.05		
03	SYBR	Ctsk	WT	17.03		
04	SYBR	Ctsk	A	17.42	0.378530246013202	0.378274250626769
05	SYBR	Ctsk	A	17.40	0.356336751581303	
06	SYBR	Ctsk	A	17.44	0.399955754285802	
07	SYBR	Ctsk	B	21.11	4.0647323746067	3.2177048931966
08	SYBR	Ctsk	B	21.12	4.0789855222543	
09	SYBR	Ctsk	B	21.12	4.0735478834706	
10	SYBR	Ctsk	C	19.38	2.3373125878536	2.2589468320375
11	SYBR	Ctsk	C	19.27	2.2207048941413	
12	SYBR	Ctsk	C	19.26	2.2188230141177	
13	SYBR	Ctsk	D	20.17	3.1279284979177	3.3217459207751
14	SYBR	Ctsk	D	20.76	3.7195994766423	
15	SYBR	Ctsk	D	20.16	3.1177097877654	

The original data of PCR

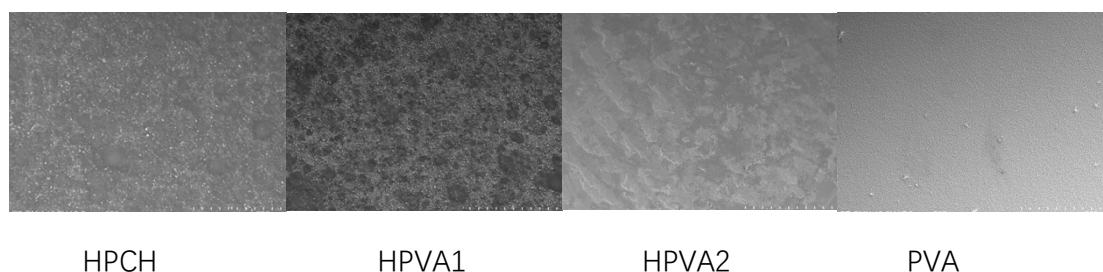


Figure1

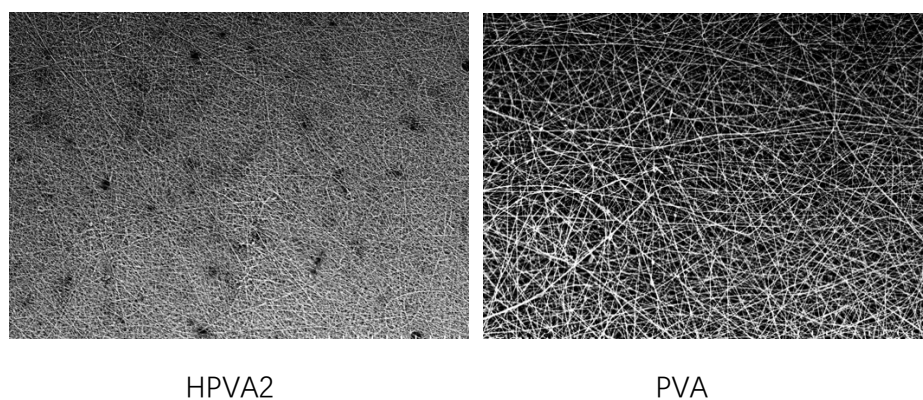
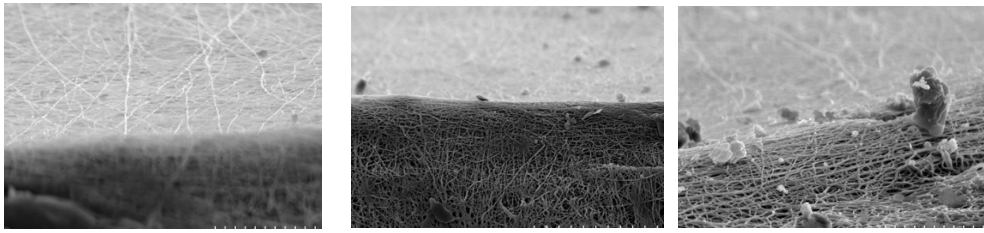


Figure2

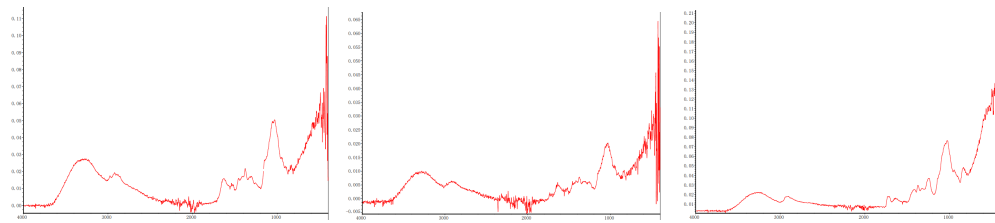


Horizontal section

cross section

45° cross section

Figure 3



PVA

HPCH

HPVA

Figure 4

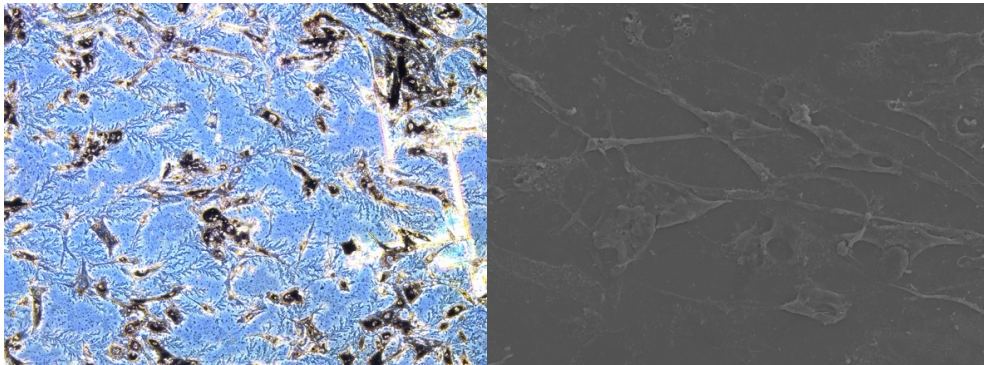
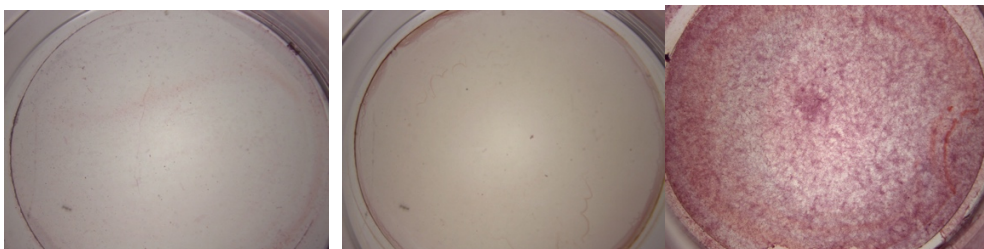


Figure 5

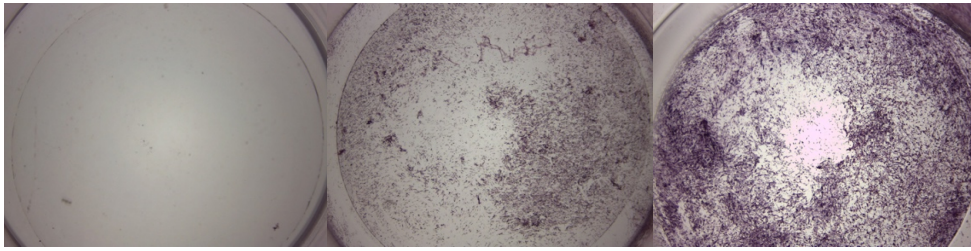


PVA

HCPH

HPVA

Figure6

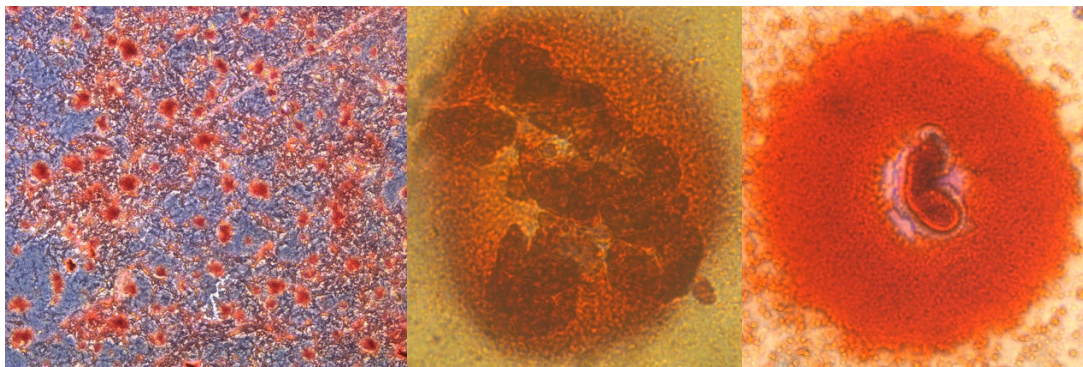


PVA

HCPH

HPVA

Figure 7

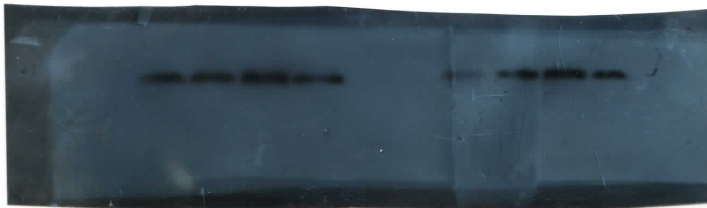


Calcified node

osteoblast

osteocyte

Figure 8 The osteoblast cell on HPVA nanofiber



This is the full-length blot imagine I can afford (Figure 9. Western blotting of RUNX2)