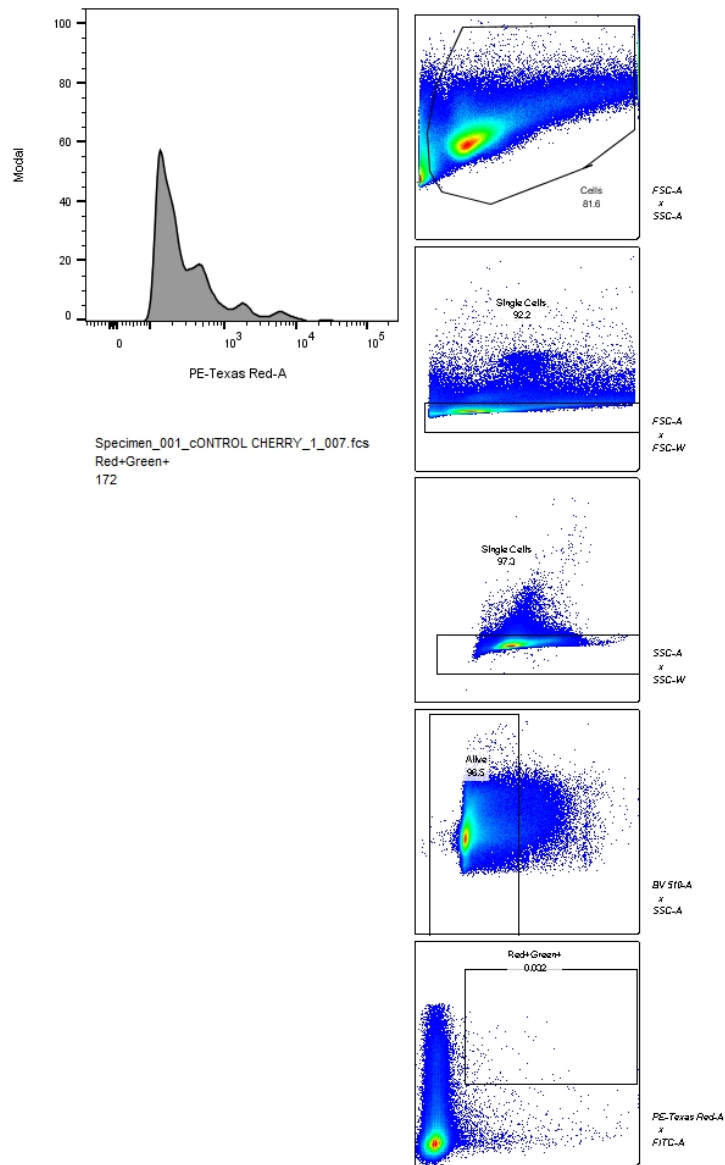


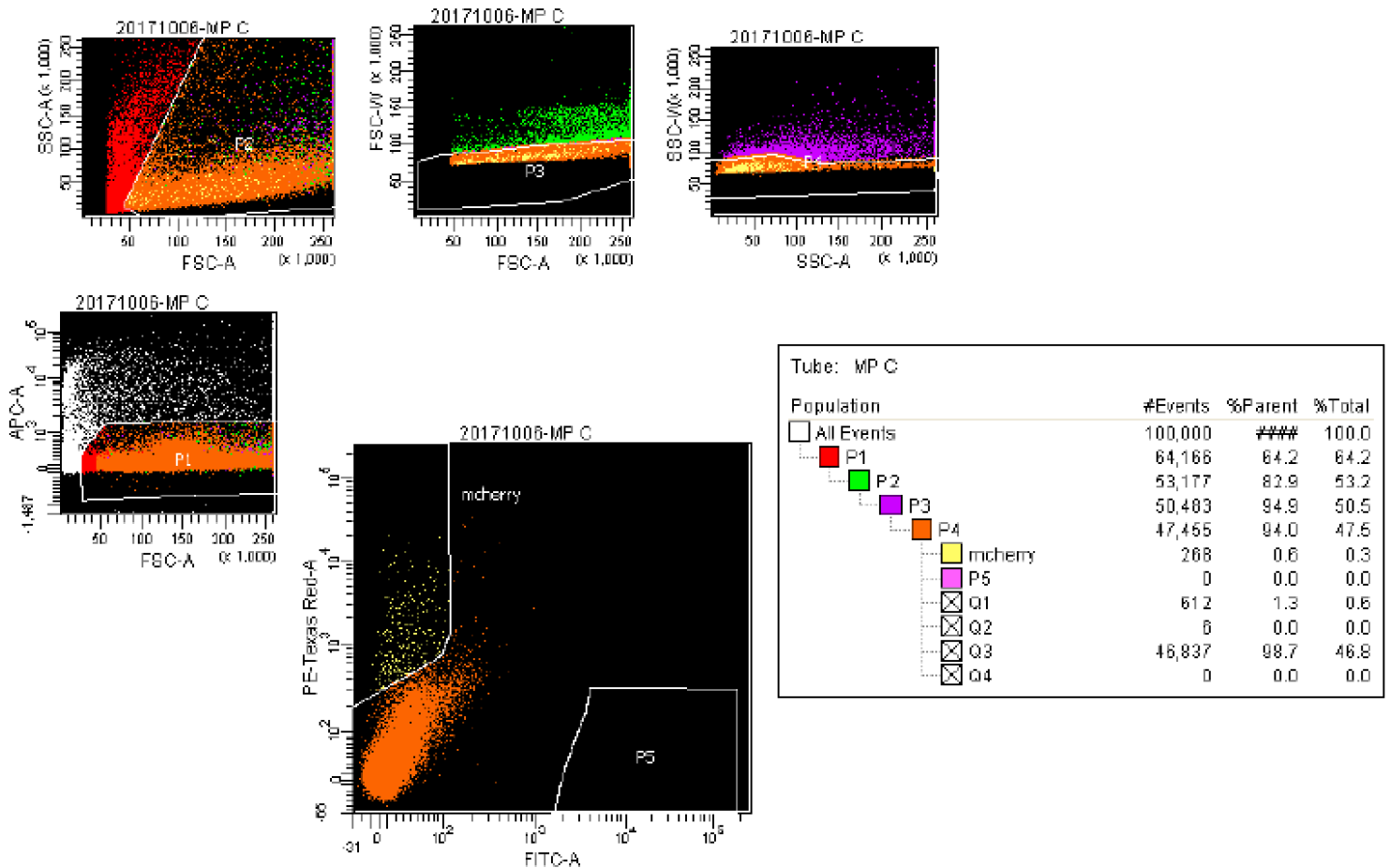
# Flow Cytometry Gating Strategy



Flow cytometry: FSC-A x SSC-A to gate on all cells; FSC-A x FSC-W to gate on single cells; SSC-A x SSC-W to gate on single cells; BV510-A x SSC-A to gate on alive cells; PE-TexasRed-A x FITC-A to gate on green+ and red+ cells

# FACS Gating Strategy

## FACSDiva Version 6.1.3



FACS: FSC-A x SSC-A to gate on all cells; FSC-A x FSC-W to gate on single cells; SSC-A x SSC-W to gate on single cells; APC-A x FSC-A to gate on alive cells; PE-TexasRed-A x FITC-A to gate red+ cells