

Figure 1: B allele frequency (BAF) plots of patients #1, #10 and #2 with apparent large deletions of MSH2 gene, that look relatively similar to each other, likely representing sequencing artifacts.

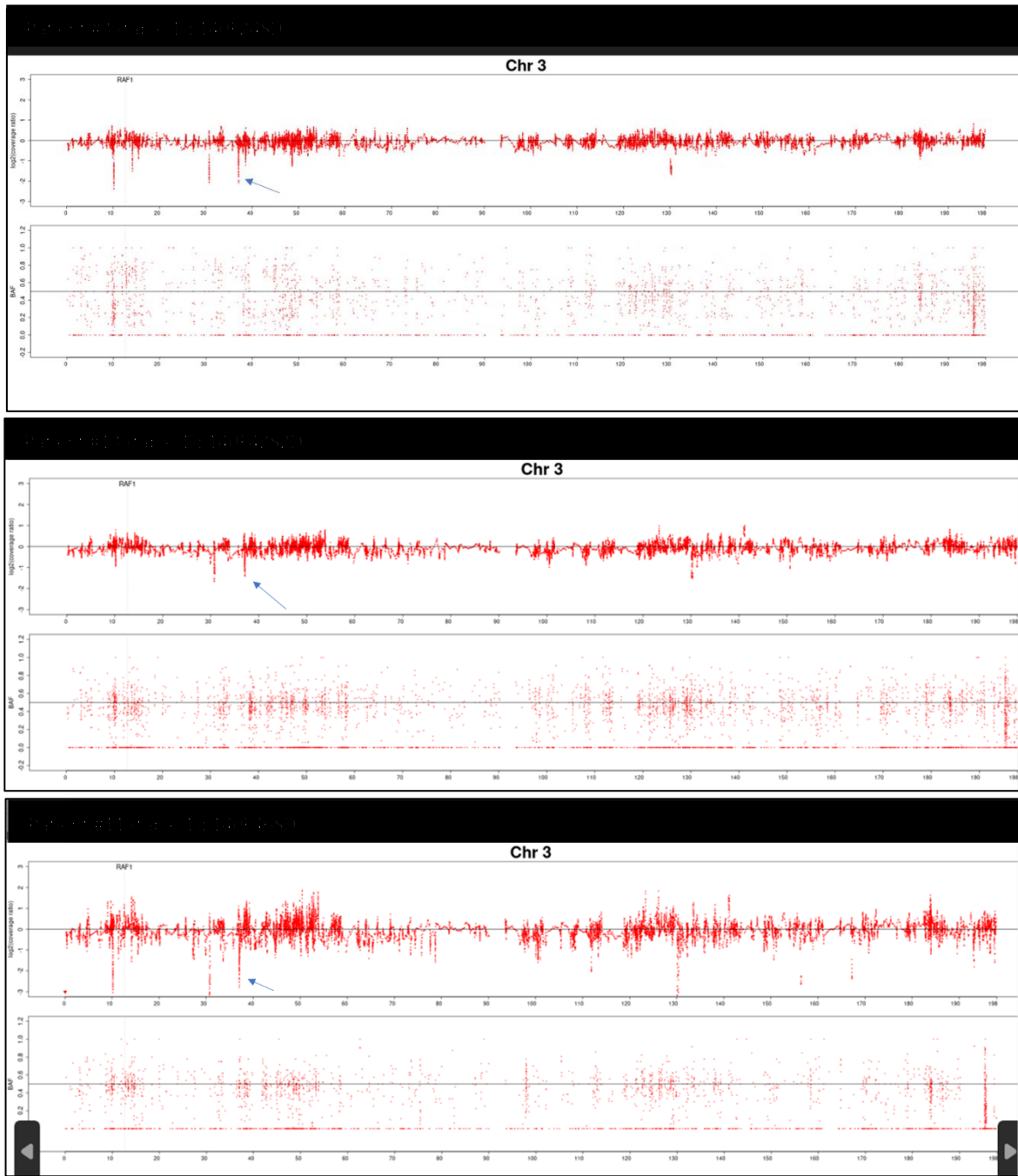


Figure 2: B allele frequency (BAF) plots of patients #3, #13 and #11 with apparent large deletions that look relatively similar to each other, likely representing sequencing artifacts.

