

1 Supplementary Information to:

2

3 **Circuit-specific dopamine dynamics for distinct operations of**
4 **decision computation in the primate striatum**

5

6 Zhoumao Duo¹, Hidetoshi Amita⁵, Yawei Wang², Masafumi Nejime², Jun Kunimatsu^{2,3},
7 Ken-ichi Inoue^{4,5}, Masahiko Takada⁵, Hiroshi Yamada^{2,3}, Masayuki Matsumoto^{2,3,5,*}

8

9 ¹ Ph. D. Program in Humanics, University of Tsukuba, Tsukuba, Ibaraki 305-8575,
10 Japan

11 ² Institute of Medicine, University of Tsukuba, Tsukuba, Ibaraki 305-8575, Japan

12 ³ Transborder Medical Research Center, University of Tsukuba, Tsukuba, Ibaraki 305-
13 8575, Japan

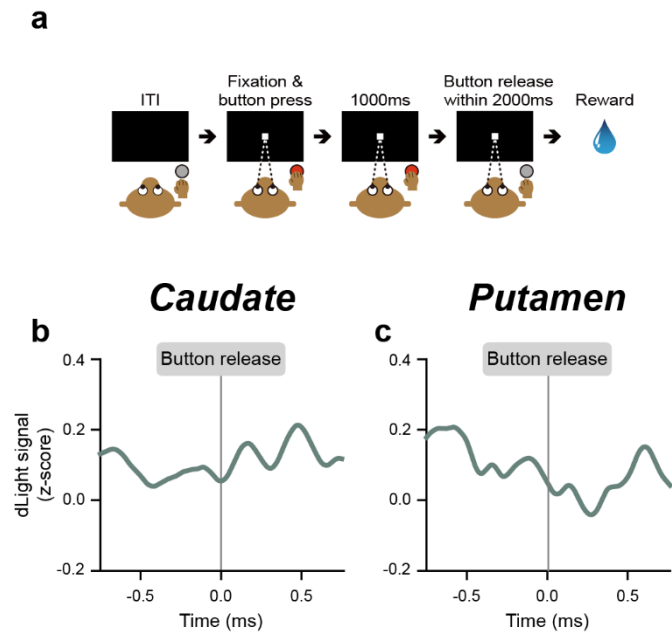
14 ⁴ Department of Integrative Anatomy, Graduate School of Medical Sciences and
15 Medical School, Nagoya City University, Nagoya, Aichi, 467-8601, Japan.

16 ⁵ Center for the Evolutionary Origins of Human Behavior, Kyoto University, Inuyama,
17 Aichi 484-8506, Japan

18

19 * Correspondence to: Masayuki Matsumoto (matsumoto.masayuki.4w@kyoto-u.ac.jp)

20

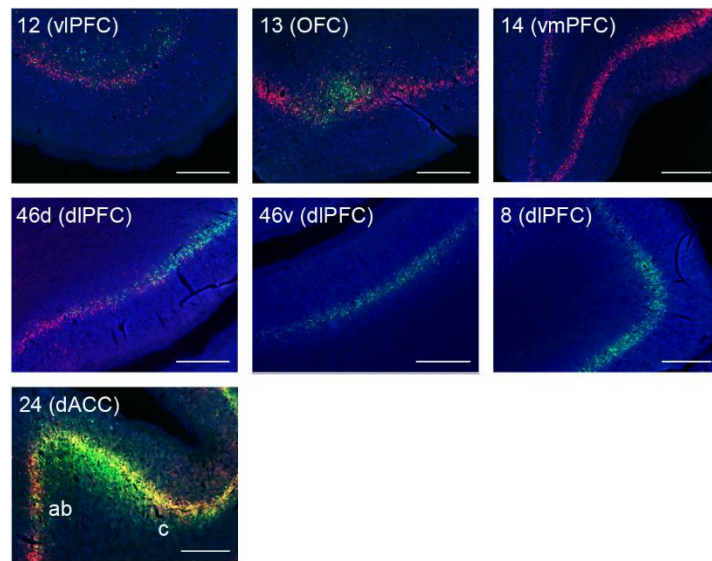


21

22 **Supplementary Fig. 1: Effect of simple motor action on dLight signal.**

23 **a**, Simple button-release motor task. ITI, intertrial interval. **b**, **c**, dLight signals aligned
 24 at the onset of button release in the caudate (**b**) ($n = 16$ sessions) and the putamen (**c**)
 25 ($n = 18$ sessions). Data for this analysis were obtained from 16 of the 23 recording
 26 sessions in the caudate and 18 of the 28 recording sessions in the putamen.

27



28

29 **Supplementary Fig. 2: High-magnification view of each prefrontal area.**

30 The high-magnification view of the same coronal section shown in Fig. 5b was
31 displayed for vIPFC (area 12), OFC (area 13), vmPFC (area 14), dIPFC (areas 46d,
32 46v and 8), and dACC (areas 24ab and 24c). Scale bars, 1 mm