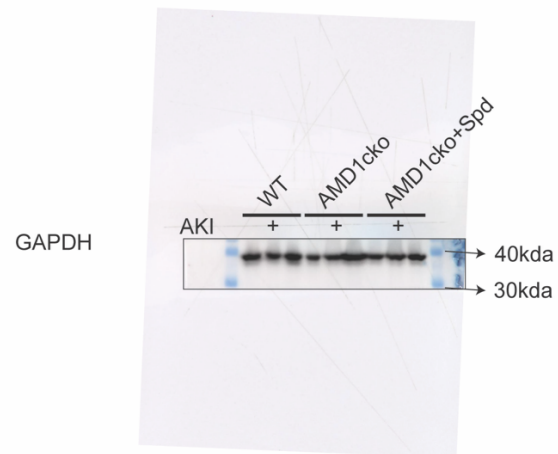
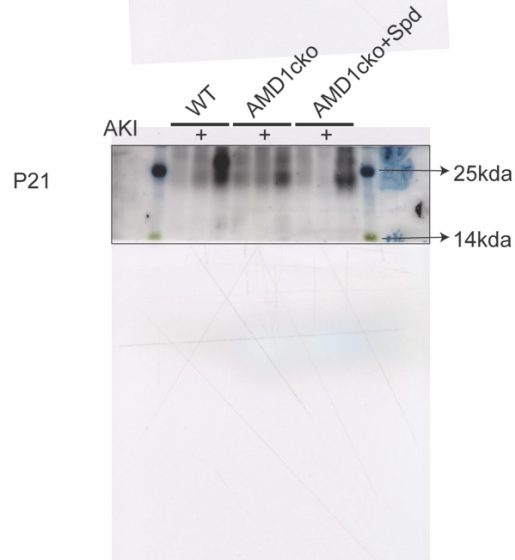
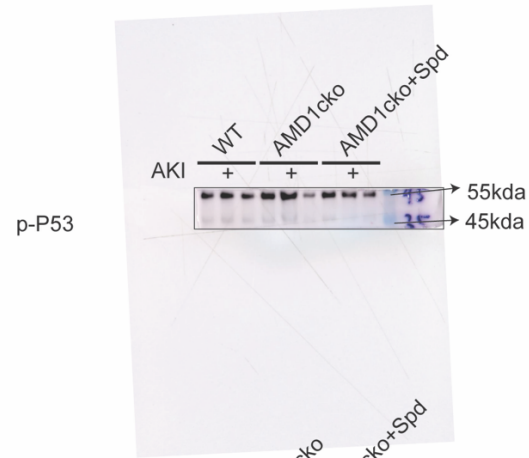


# Supplementary Information

Uncropped Blots : Figure 5B



**Figure S1. Uncropped Western blots corresponding to Figure 5B.** Uncropped, unprocessed immunoblot images for phosphorylated p53 (p-p53), p21, and GAPDH in kidney lysates from the indicated groups (WT, AMD1cko, and AMD1cko + spermidine (Spd)) after ischemia–reperfusion injury (IRI). All targets were detected from the same membrane, which was cut into strips and probed separately for each antibody. Images are shown with strip boundaries visible and lanes presented in the original order without rearrangement. Molecular weight markers (kDa) are indicated. For the p-p53 strip, a minor trim at the extreme left membrane edge adjacent to the marker was performed before imaging to remove a visible contaminant; no bands/lane information were removed. GAPDH served as the loading control.

---

### qPCR Primers sequences

---

|           |                        |
|-----------|------------------------|
| B-actin-F | GGCTGTATTCCCCTCCATCG   |
| B-actin-R | CCAGTTGGTAACAATGCCATGT |
| Cxcl-1-F  | ACTCAAGAATGGTCGCGAGG   |
| Cxcl-1-R  | GTGCCATCAGAGCAGTCTGT   |
| Il-1B-F   | TGCCACCTTTTGACAGTGATG  |
| Il-1B-R   | AAGGTCCACGGGAAAGACAC   |
| Il-6-F    | CCCCAATTTCCAATGCTCTCC  |
| Il-6-R    | CGCACTAGGTTTGCCGAGTA   |
| Cdkn1a-F  | CGGTGTCAGAGTCTAGGGGA   |
| Cdkn1a-R  | AGGATTGGACATGGTGCCTG   |
| Cdkn2a-F  | GCTTCTCACCTCGCTTGTCA   |
| Cdkn2a-R  | AGTGACCAAGAACCTGCGAC   |

---

**Table S1. qPCR Primers sequences**