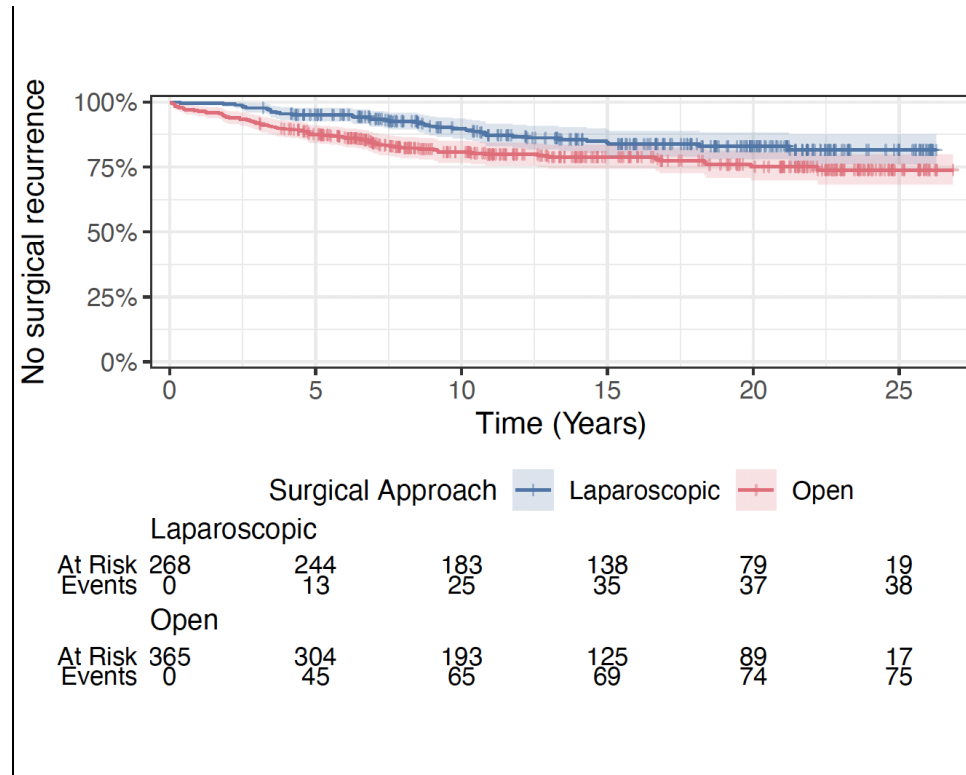
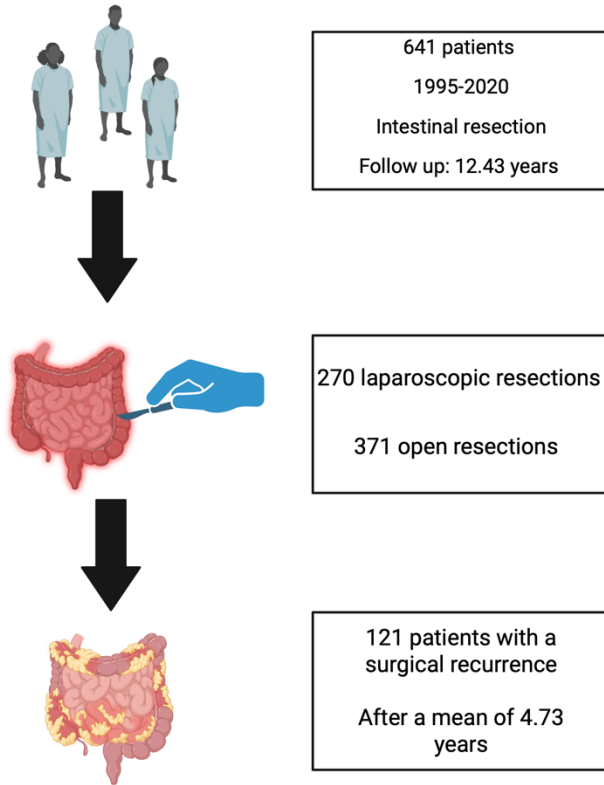


Laparoscopic surgery is associated with reduced long-term reoperation risk in Crohn's disease



FACTORS ASSOCIATED WITH SURGICAL RECURRENCE

Open surgery (HR 1.75, 95% CI 1.14–2.69; $p=0.009$)

Microscopical signs of inflammation at the resection margins (HR 1.57, 95% CI 1.07–2.30; $p=0.020$)

Non-Smokers (HR 0.66, 95% CI 0.45–0.96; $p=0.029$)

CONCLUSION

Minimally invasive surgery was associated with lower long-term surgical recurrence in Crohn's disease and may represent a potentially modifiable factor in optimising surgical outcomes.