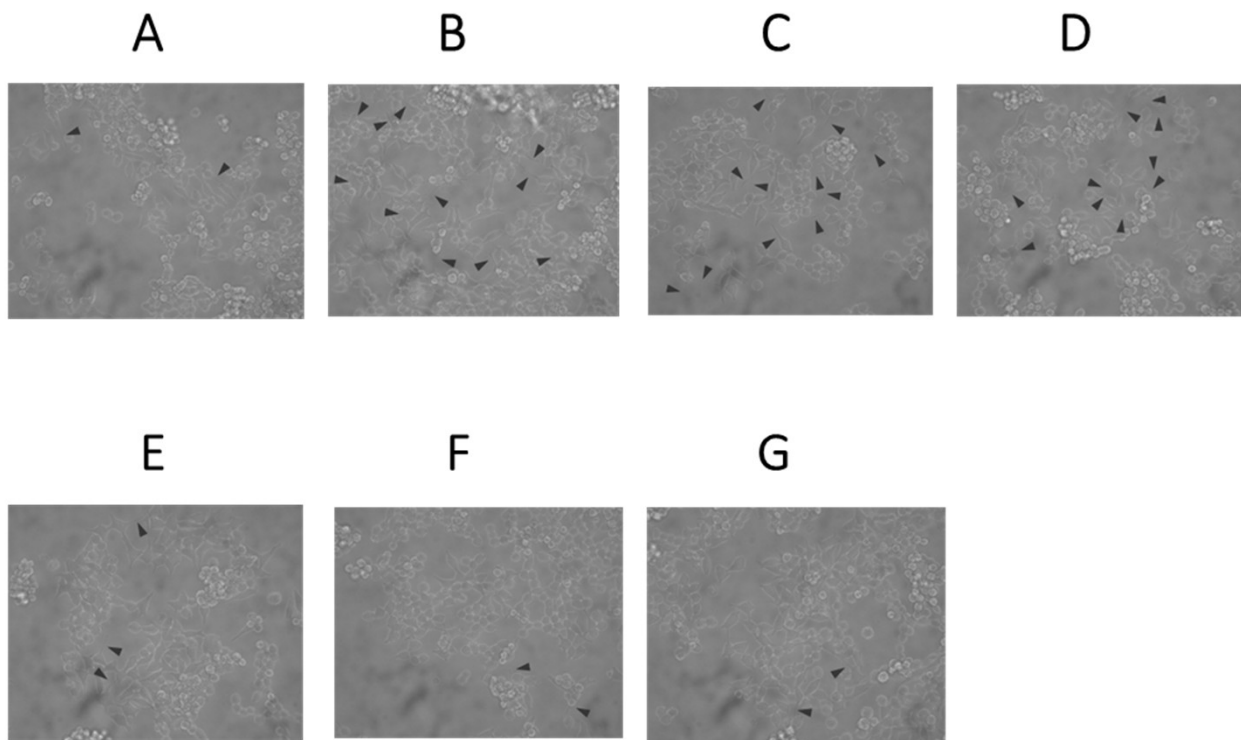


Supplementary Fig. 9



A ; Control

B ; Propolis 6.7 $\mu\text{g/ml}$ + Curcumin 0.67 $\mu\text{g/ml}$

C ; Propolis 13.4 $\mu\text{g/ml}$ + Curcumin 1.34 $\mu\text{g/ml}$

D ; Propolis 20 $\mu\text{g/ml}$ + Curcumin 2.0 $\mu\text{g/ml}$

E ; Propolis 6.7 $\mu\text{g/ml}$ + Curcumin 0.67 $\mu\text{g/ml}$ + SB203580 1 μM

F ; Propolis 13.4 $\mu\text{g/ml}$ + Curcumin 1.34 $\mu\text{g/ml}$ + SB203580 1 μM

G ; Propolis 20 $\mu\text{g/ml}$ + Curcumin 2.0 $\mu\text{g/ml}$ + SB203580 1 μM