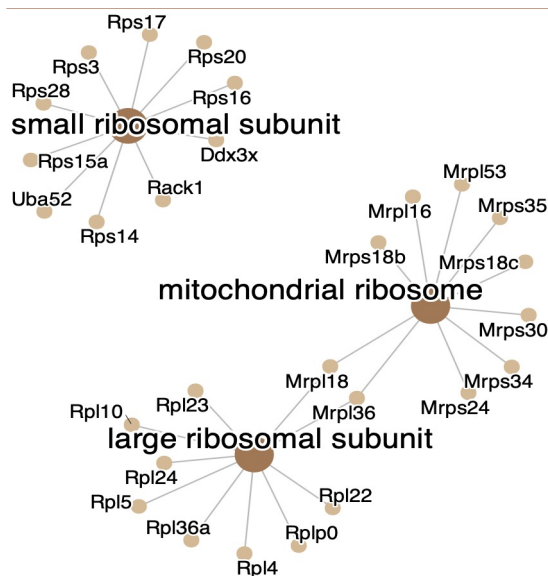
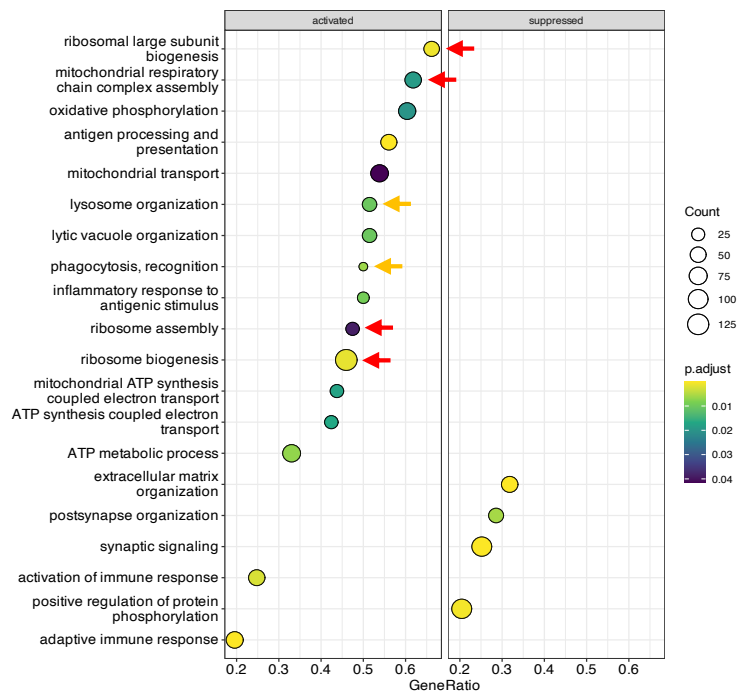


A Top 10 proteins in selected GO terms related to 'Ribosome'

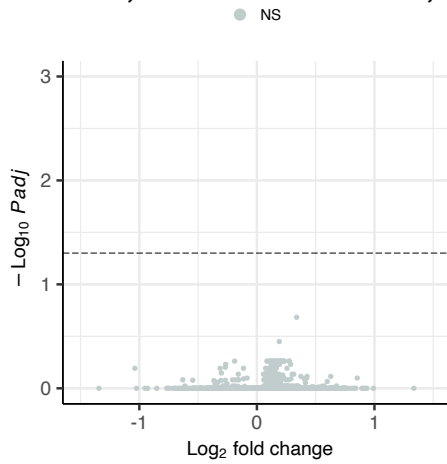


B Transcriptome, APP^{NL-G-F} (9 mo vs 3 mo), GSEA (GO: BP)

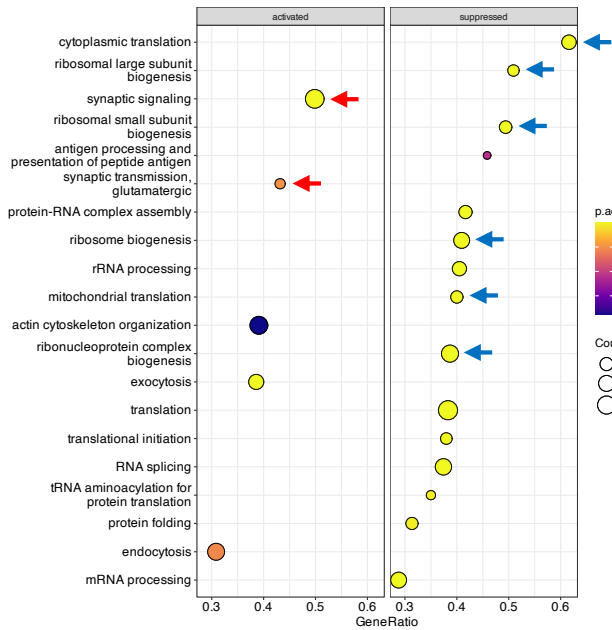


Extended Figure 2

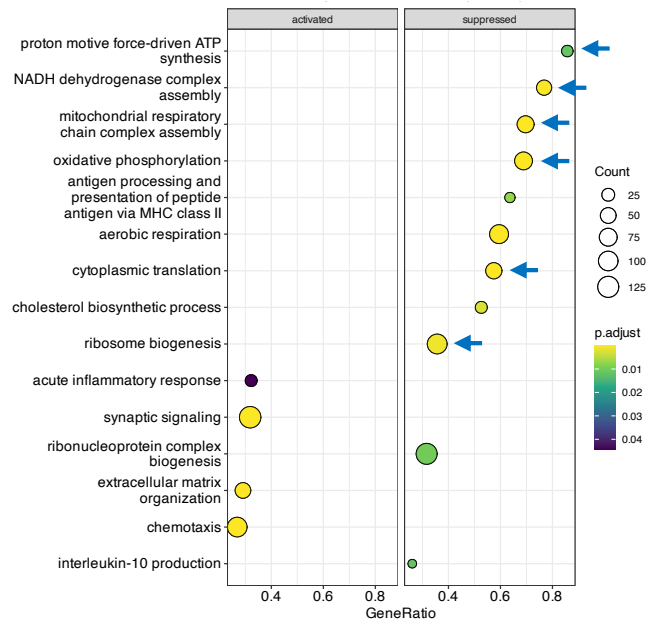
A Proteome, APPNL-G-F; Trem2^{KO} vs APPNL-G-F, 3 mo



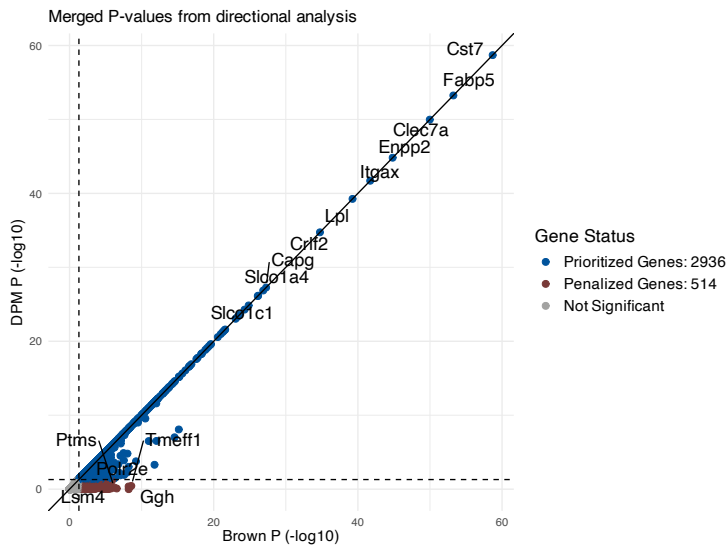
B Proteome, APPNL-G-F; TREM2^{KO} vs APPNL-G-F (9 mo), GSEA (GO: BP)



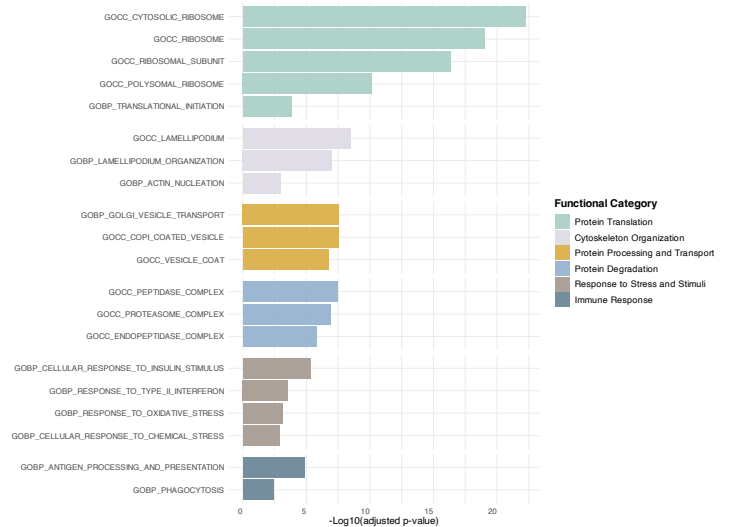
C Transcriptome, APPNL-G-F; TREM2^{KO} vs APPNL-G-F (9 mo), GSEA (GO: BP)



D Directional integration of transcriptome and proteome, APPNL-G-F (9 mo vs 3 mo)

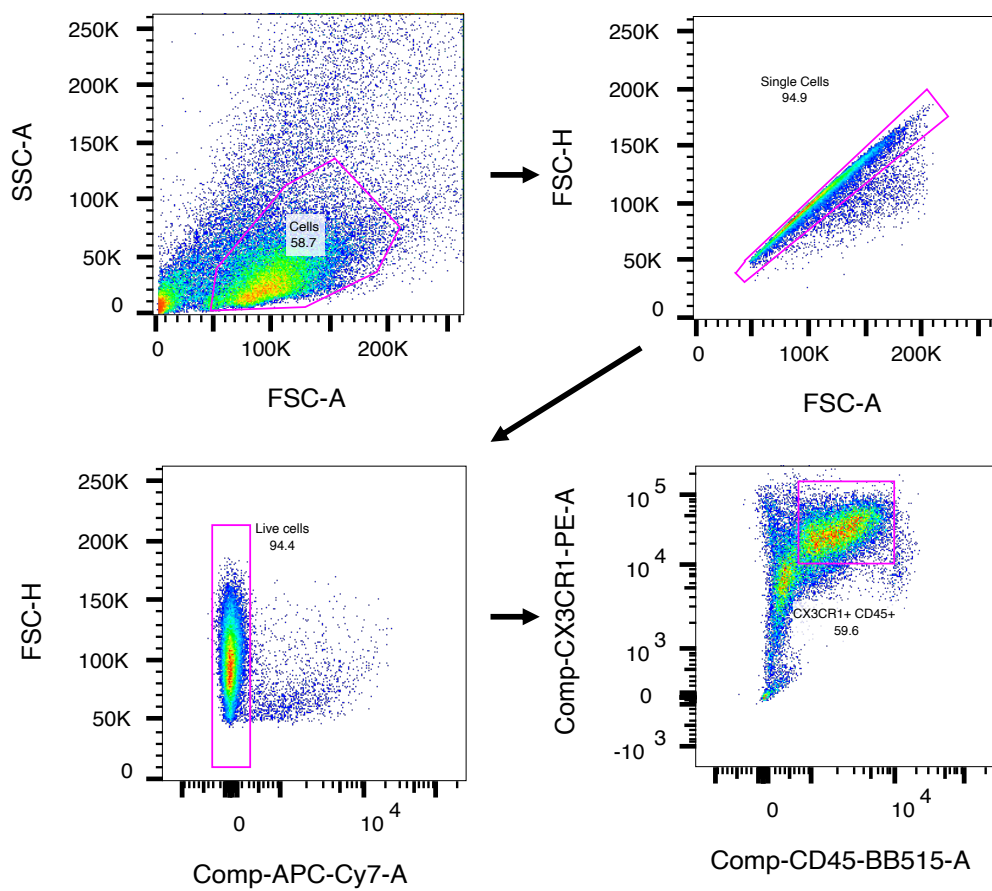


E Unique GO term identified in APPNL-G-F Datasets (APPNL-G-F; TREM2^{KO} vs APPNL-G-F, 9 mo)

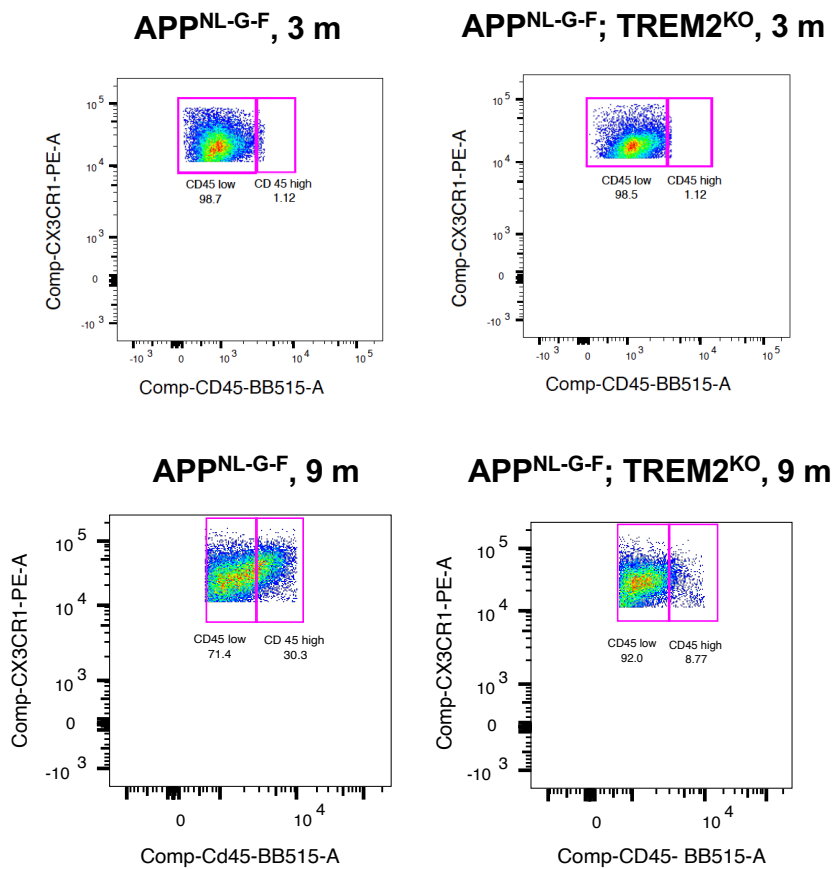


Extended Figure 3

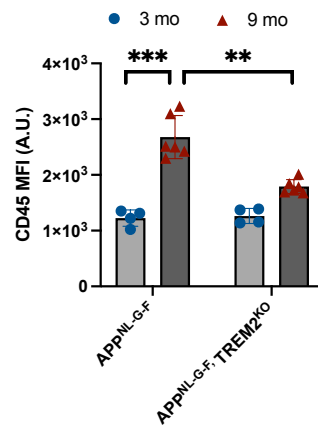
A Flow Cytometry Gating Strategy for Microglia



B

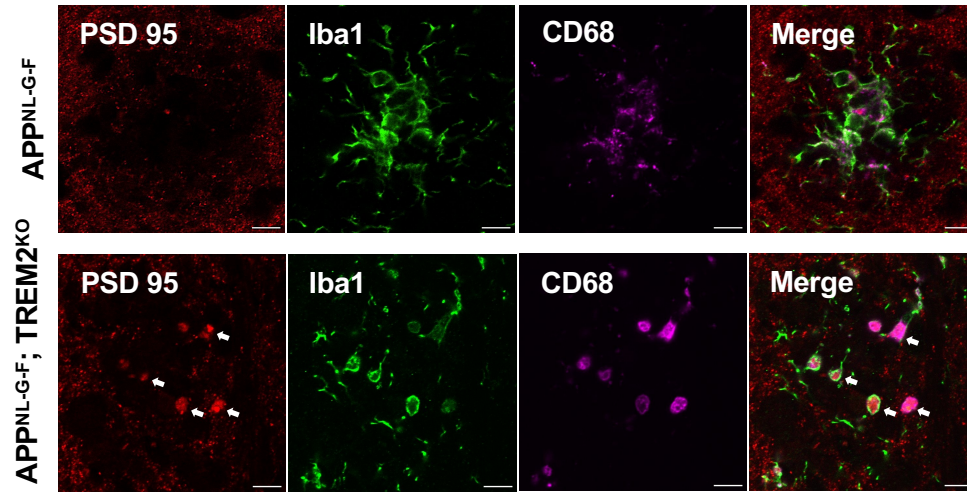


C

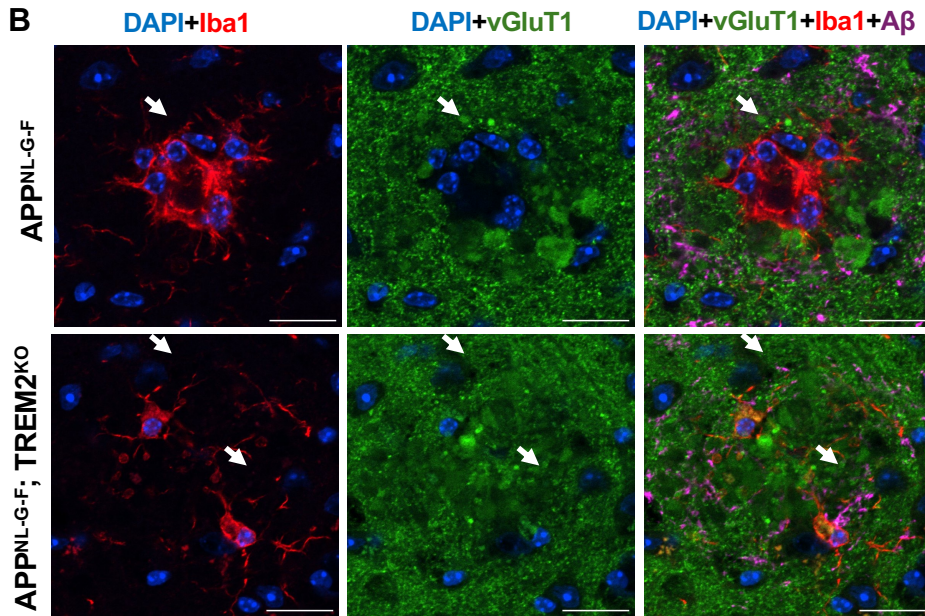


Extended Figure 4

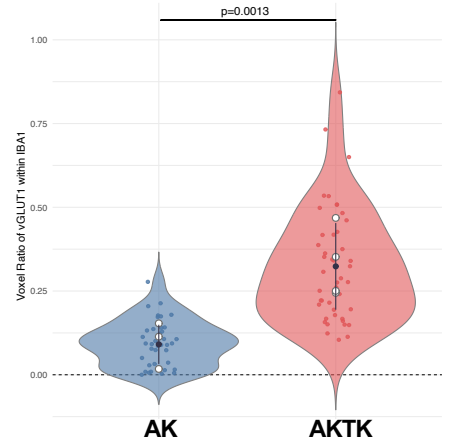
A



B

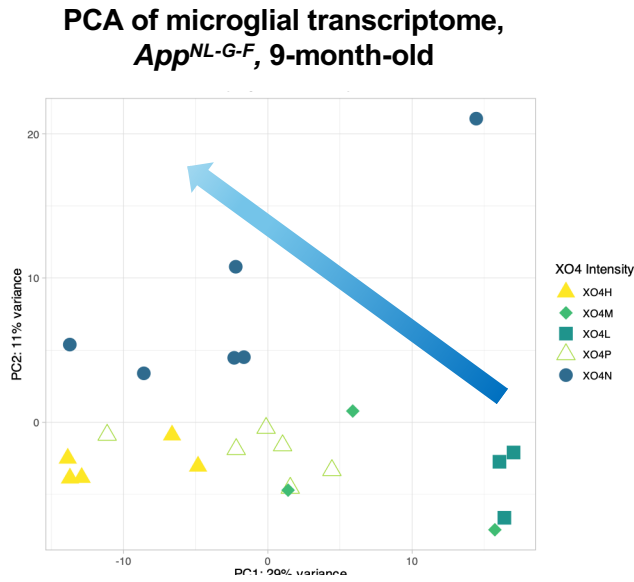


C

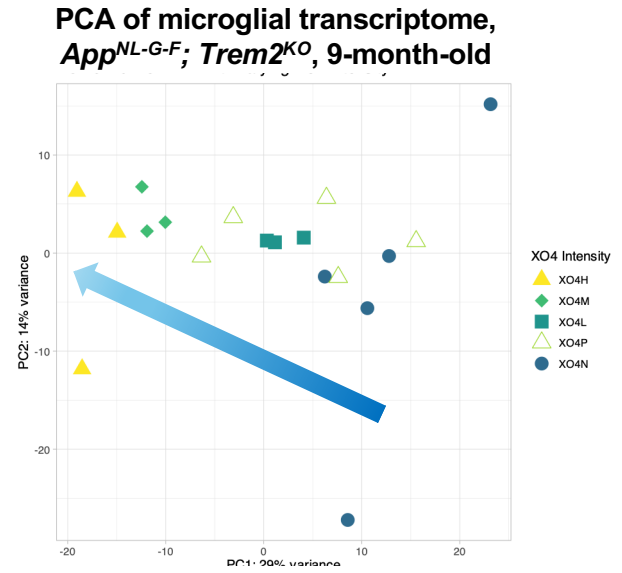


Extended Figure 5

A

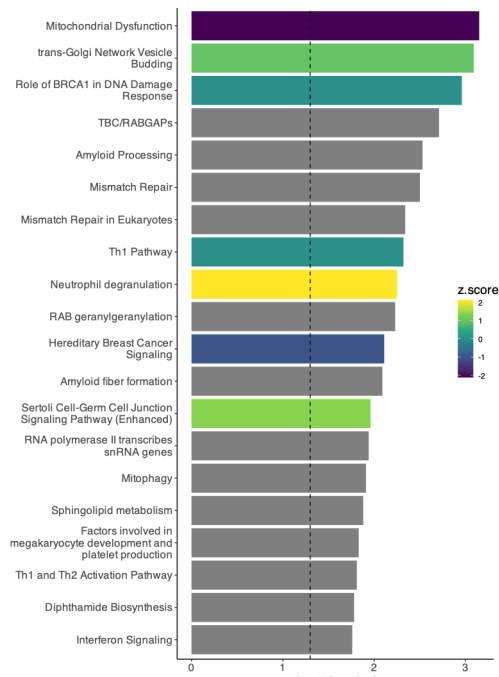


B



C

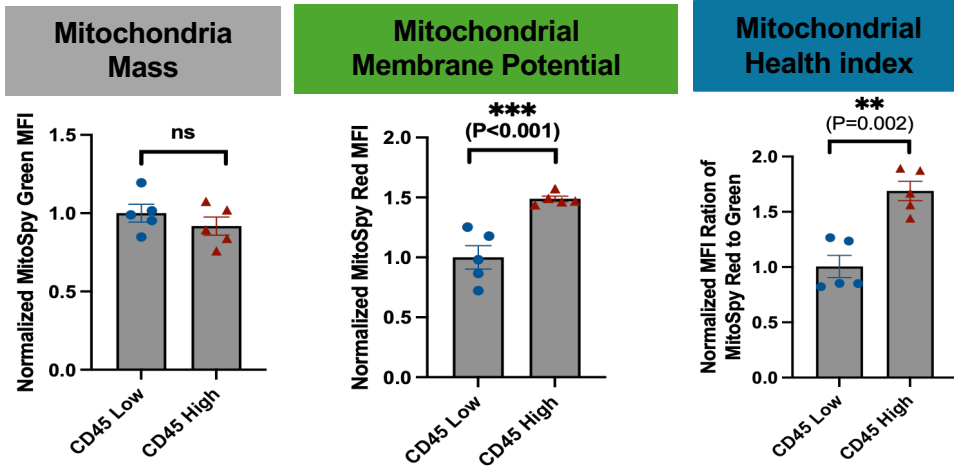
Top ranked IPA Pathways, *App^{NL-G-F}; Trem2^{KO}*, 9-month-old



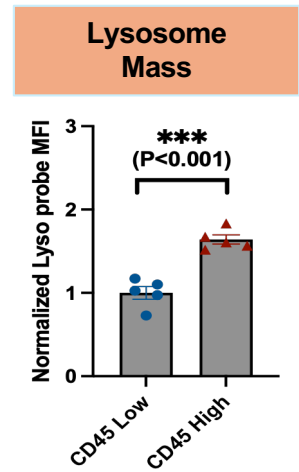
Extended Figure 6

CD45-high vs CD45-low (*App^{NL-G-F}*)

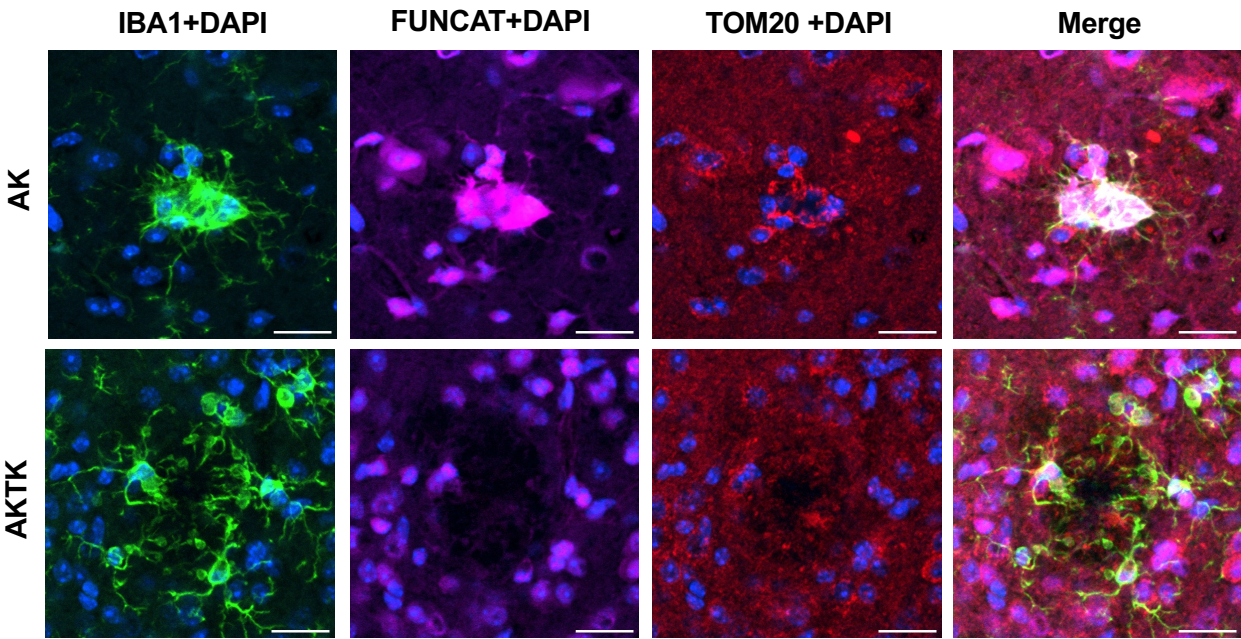
A



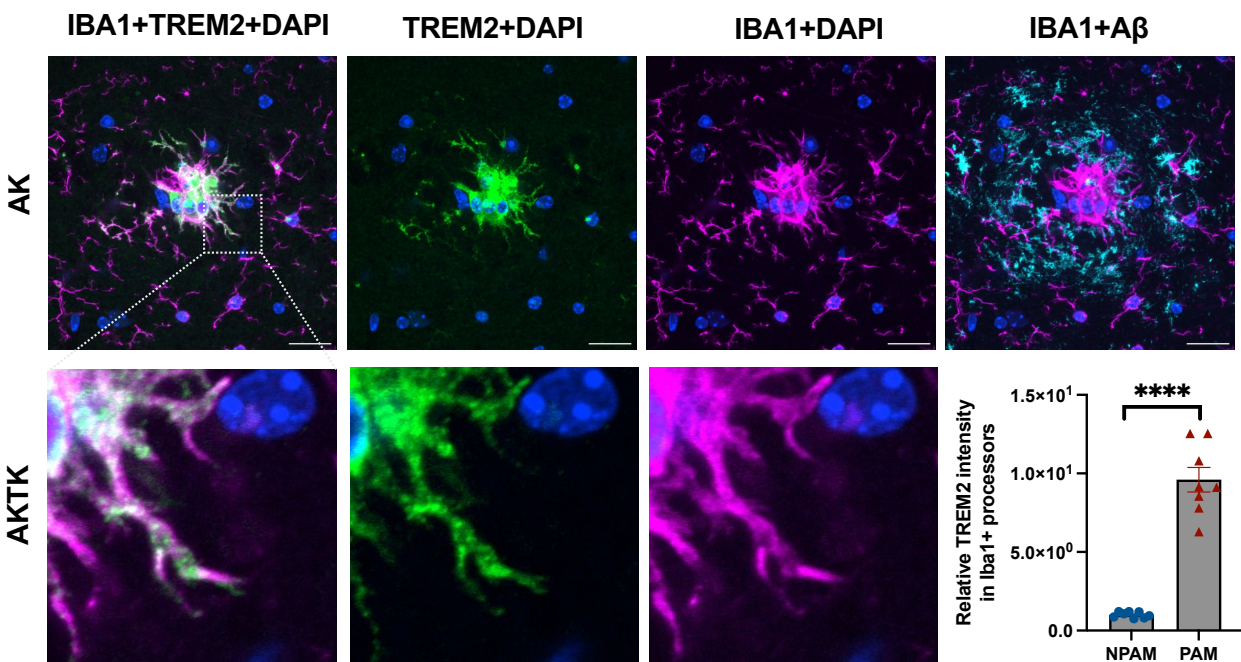
B



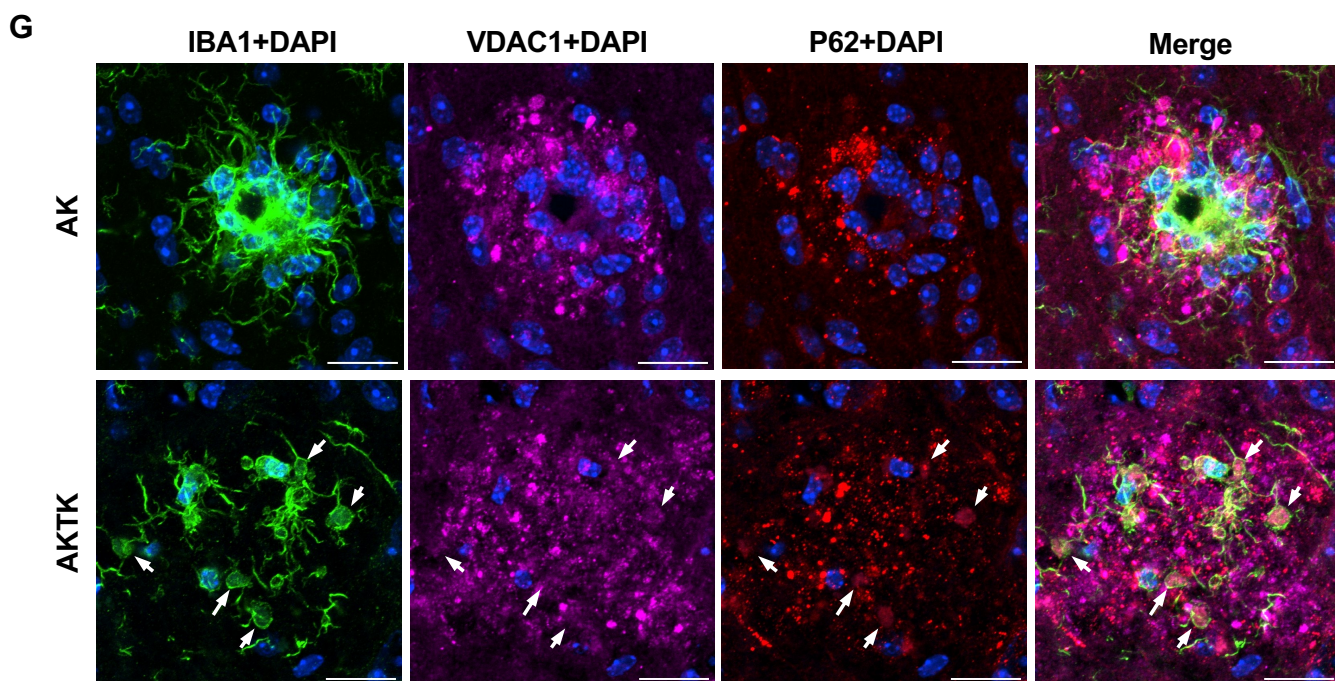
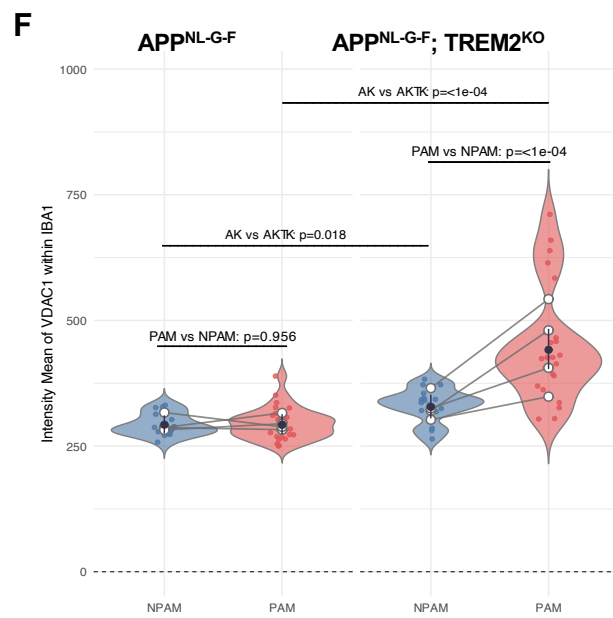
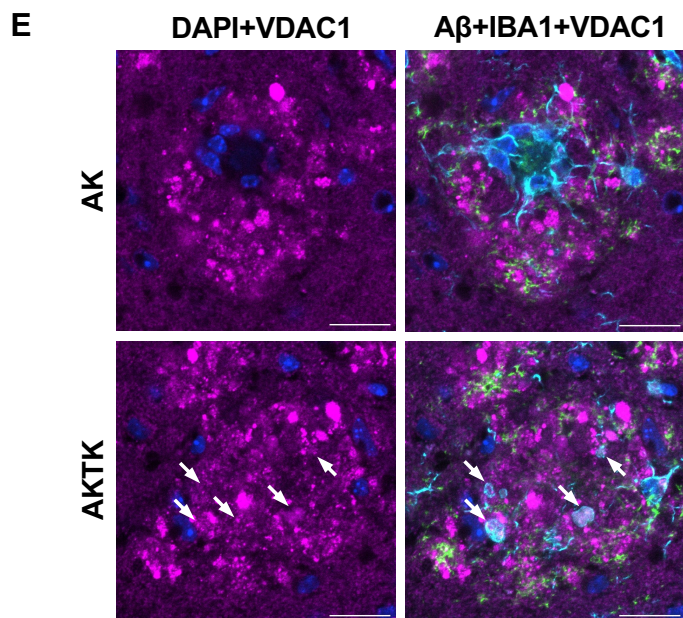
C



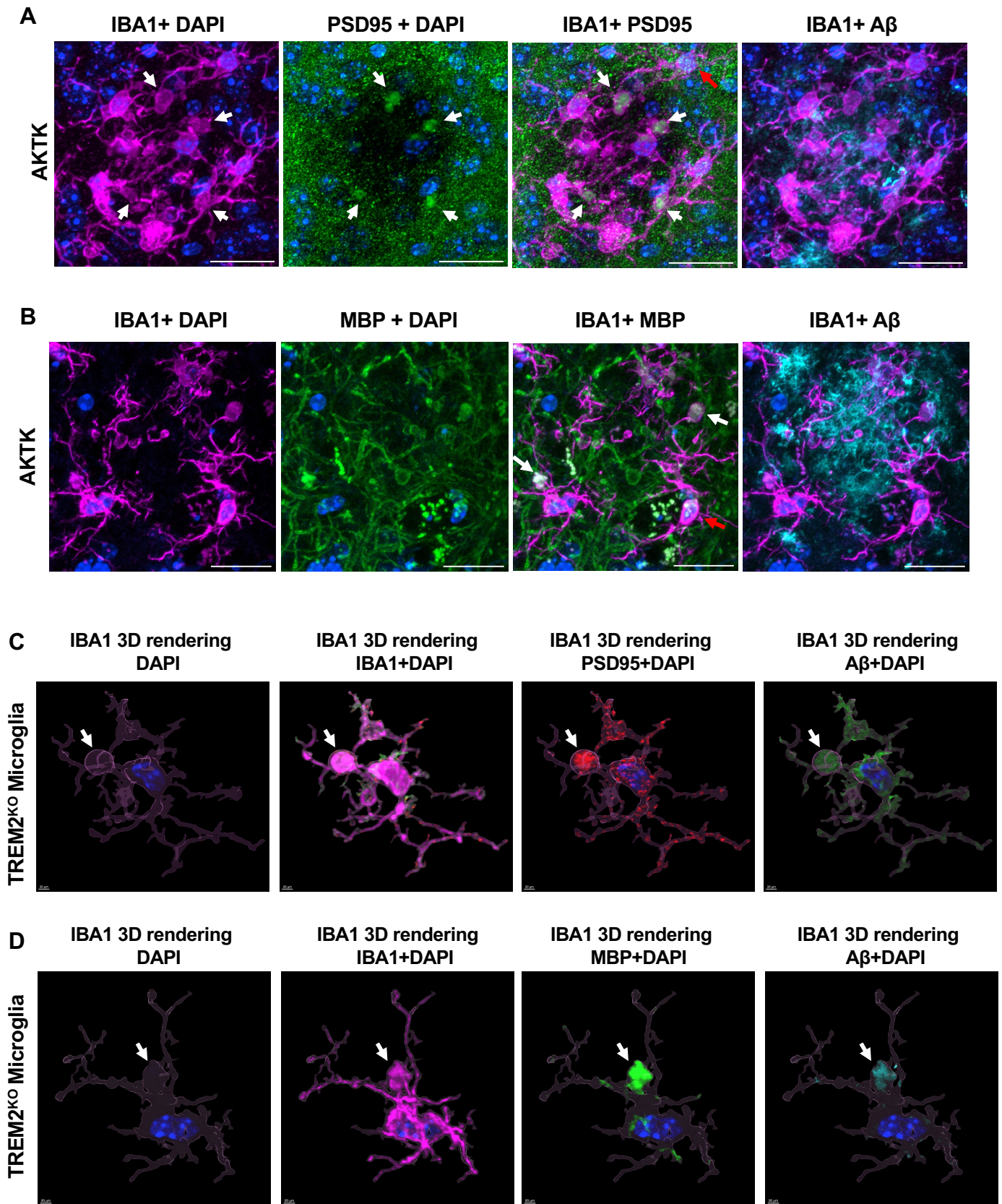
D



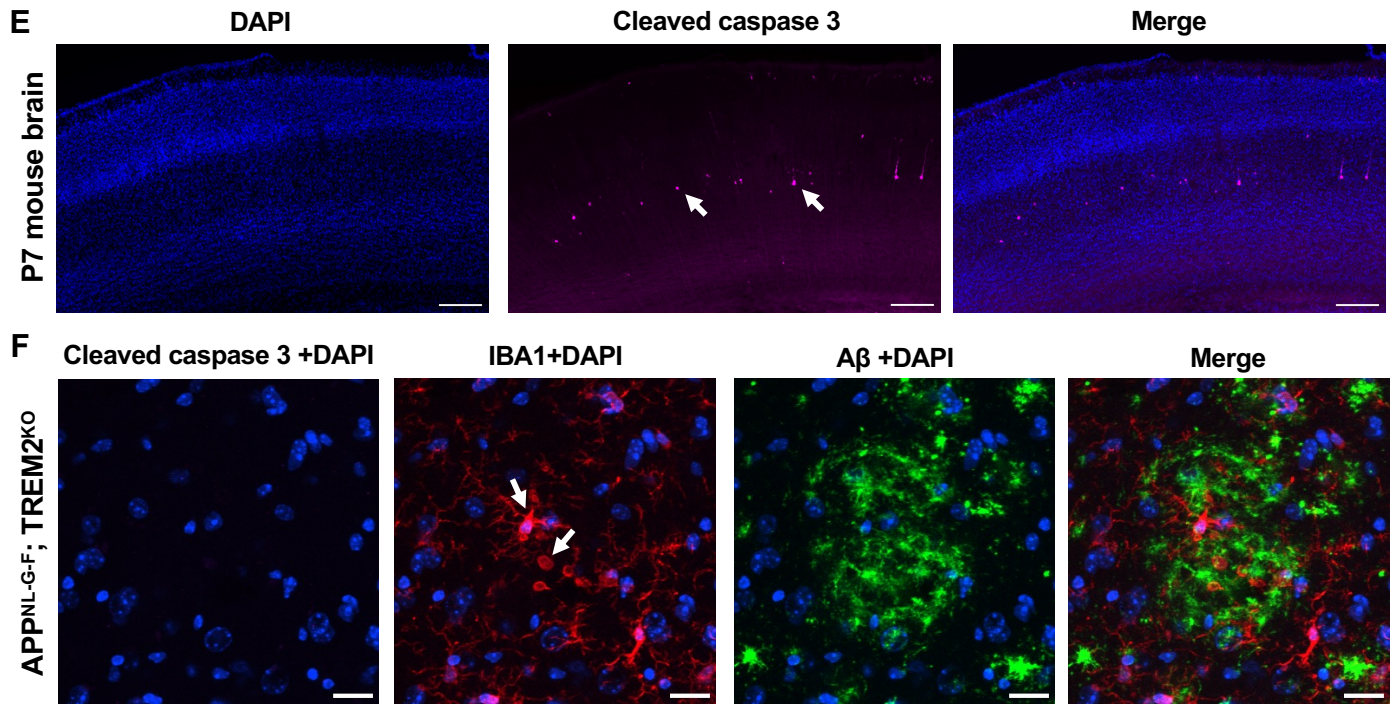
Extended Figure 6 (Continued)



Extended Figure 7

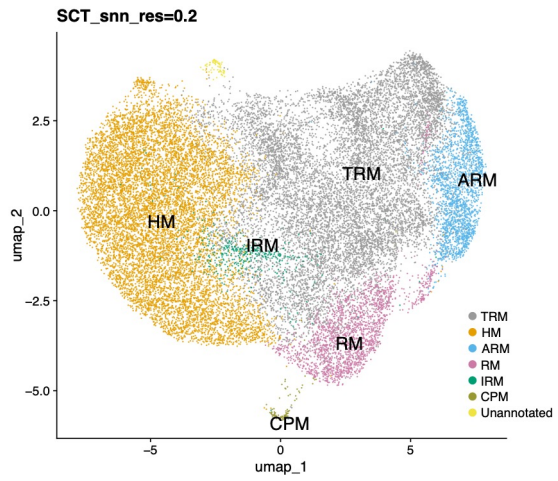


Extended Figure 7 (Continued)

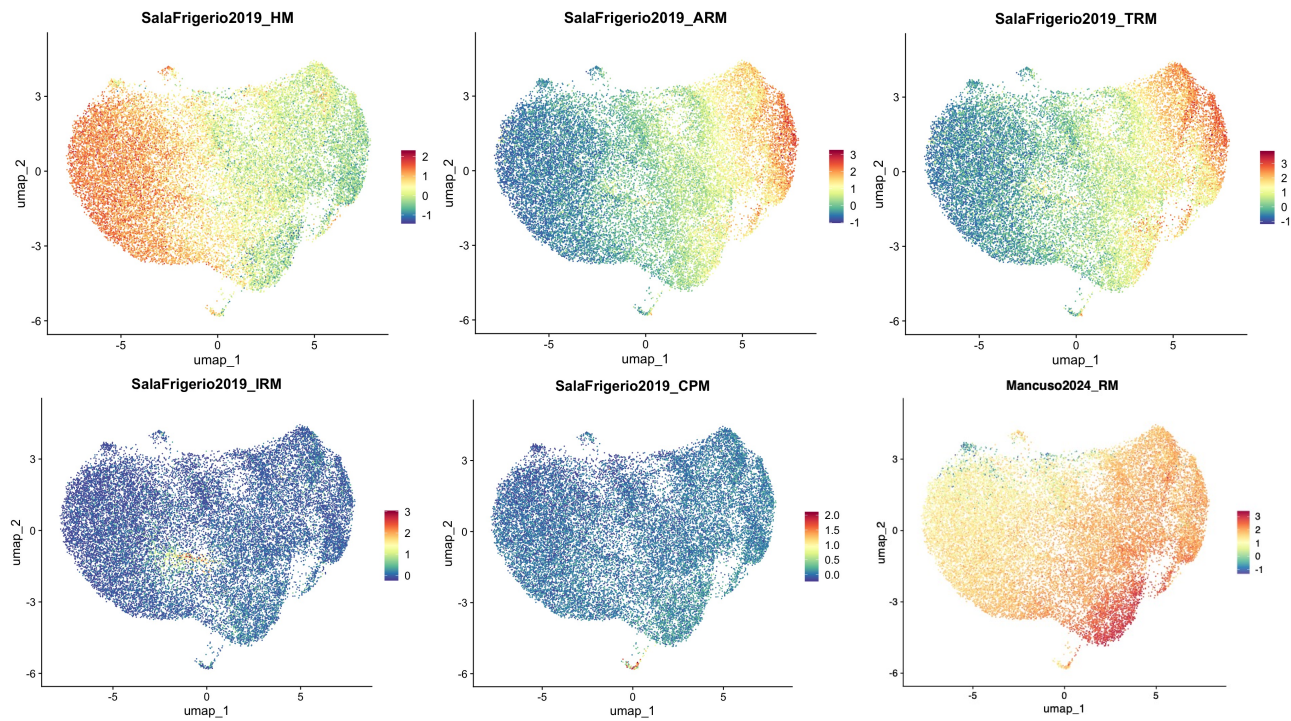


Extended Figure 8

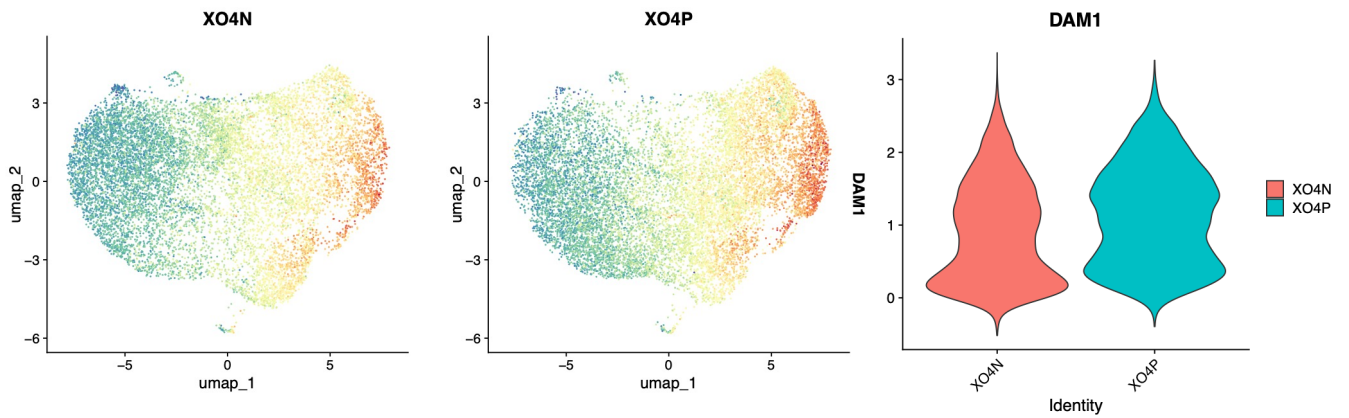
A



B



C



Extended Figure 8 (Continued)

