

Supplementary information for blots

Fig.1A : Expression profiles of SARS-CoV-2 nucleocapsid (N) and spike (S) proteins in Vero cells at different time points (2, 4, 6, 8, 12, 16, 20, and 24 hours) post-infection.

Fig.1A-GAPDH



Fig.1A-N

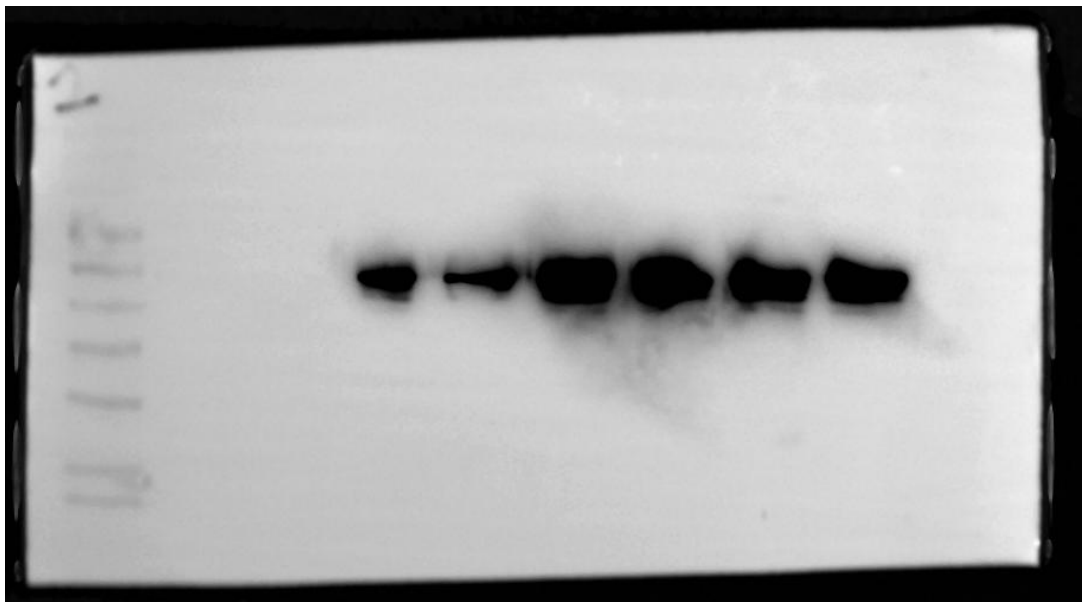


Fig.1A-S



Fig.3C: Immunoprecipitation (IP) assays were used to assess structural integrity.

Fig.3C-N

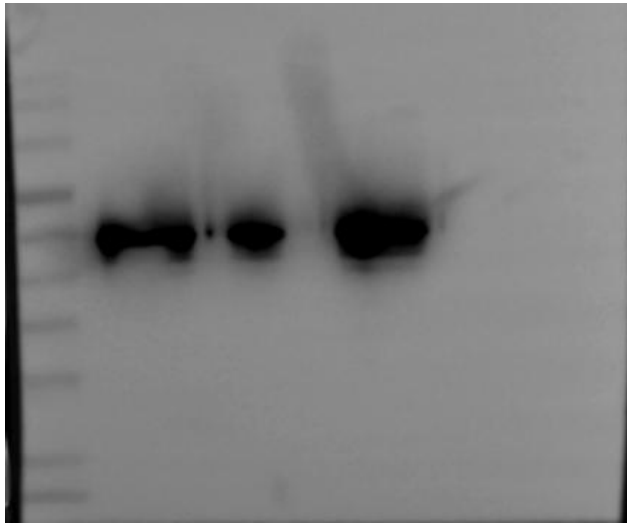


Fig.3C-S1

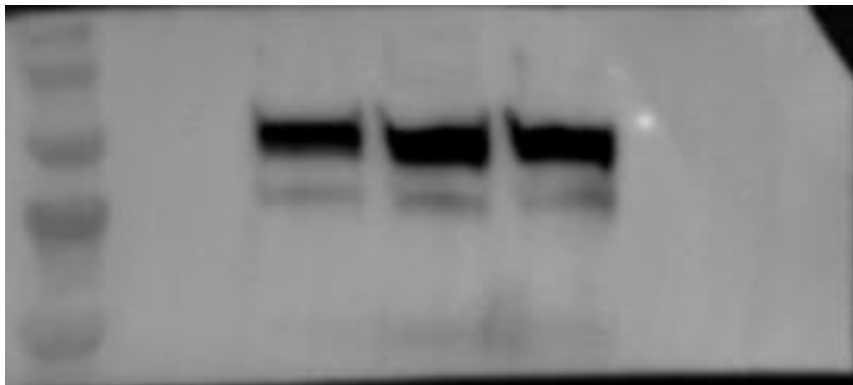


Fig.4A: S1 protein expression was evaluated by Western blot analysis.

Fig.4A-293T

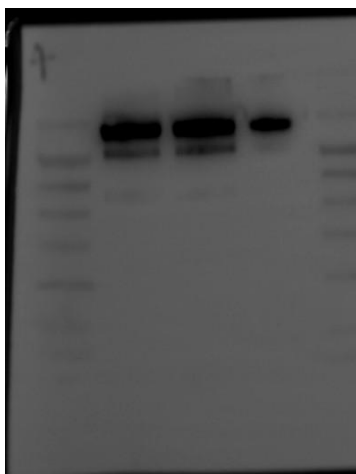
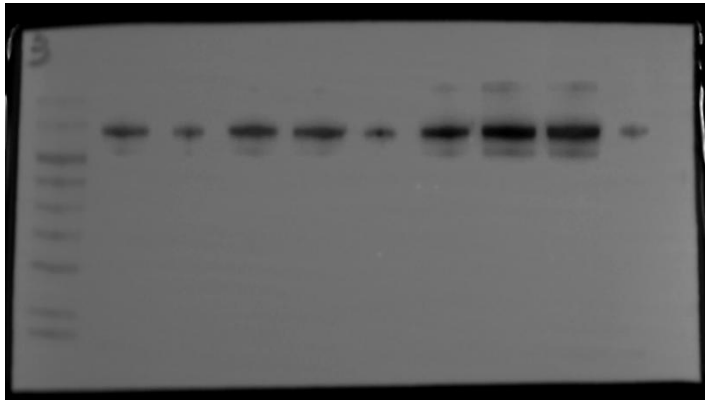


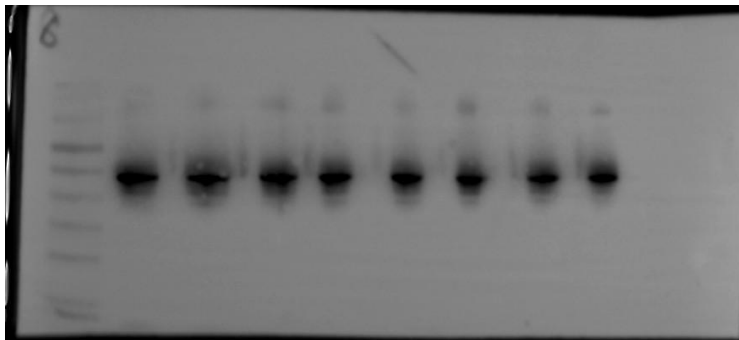
Fig.4A- Macrophages, DCs and 16HBE cells



(**Note:** From left to right, every third lane corresponds to the blot expression of S1 in Macrophages, DCs, and 16HBE cells, respectively.)

Fig.4B: Temporal detection (2 h, 6 h, 12 h, and 24 h) of the presence and expression of the N and S1 proteins after virion-mimetic particle transfection in different cell types.

Fig.4B-(N) 16HBE, 293T



(**Note:** From left to right, every fourth lane corresponds to the blot expression of N at different time points in 16HBE, 293T respectively.)

Fig.4B-(N) Macrophage

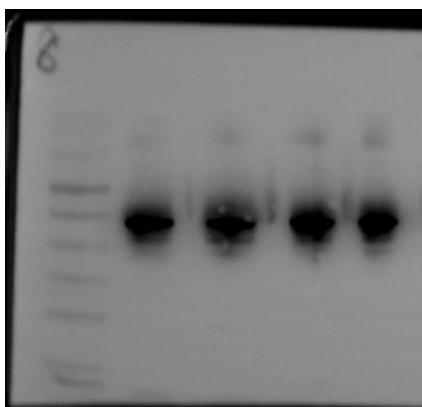


Fig.4B-(N) DCs

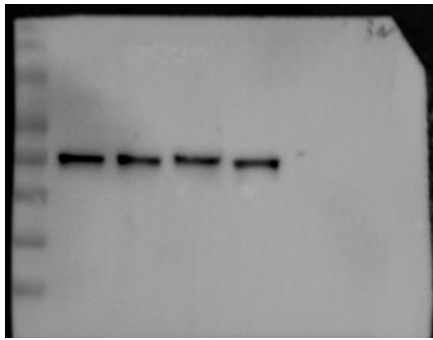
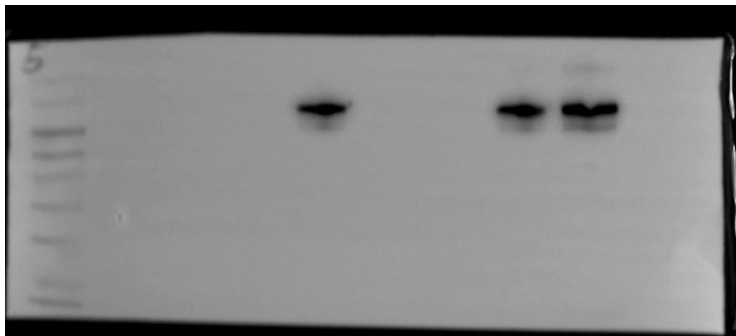


Fig.4B (S1)-Macrophage, 16HBE



(**Note:** From left to right, every fourth lane corresponds to the blot expression of S1 at different time points in Macrophage, 16HBE respectively.)

Fig.4B (S1)-DCs



Fig.4B (S1)-293T

