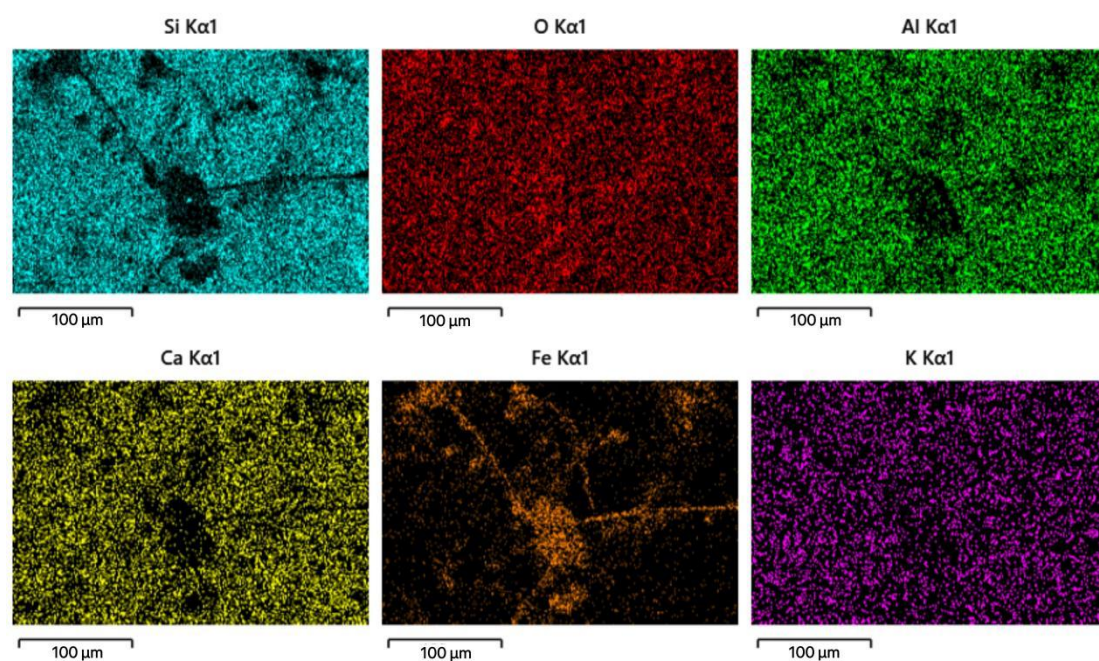


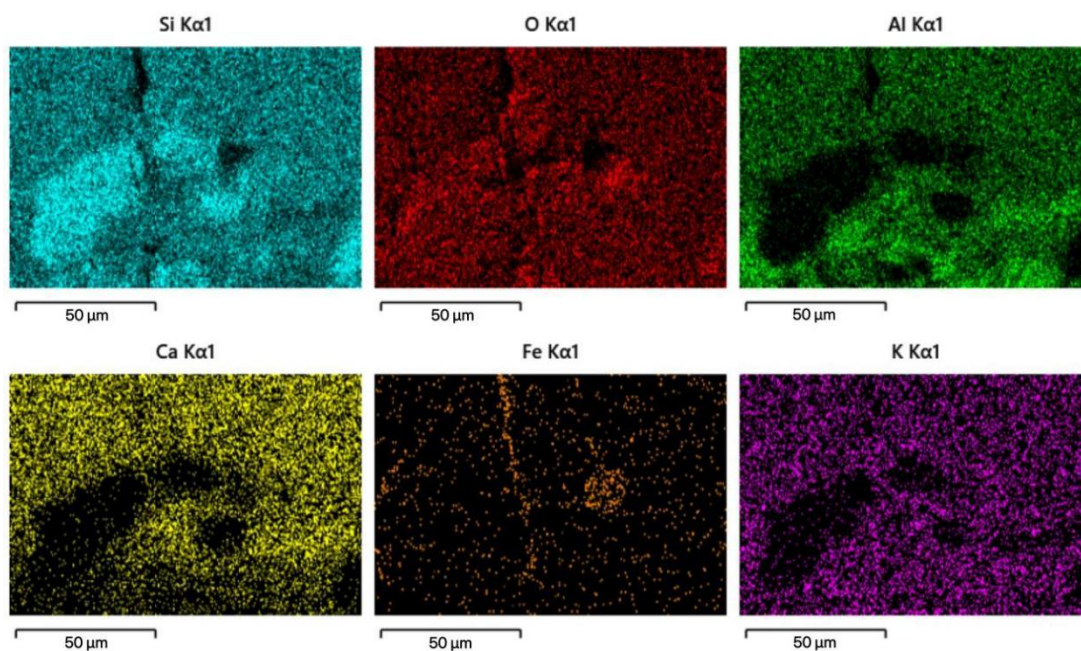
Supplementary Figures



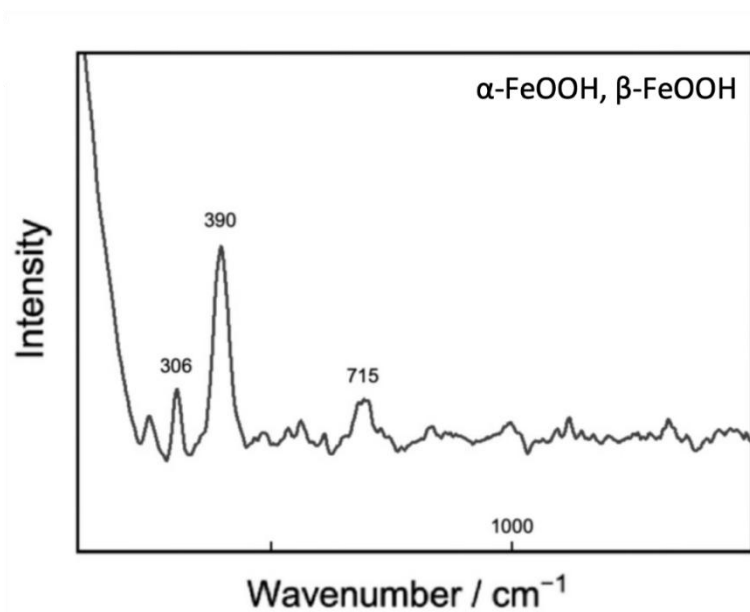
Supplementary Fig. 1. OM image of the protrusion on the outer wall of the transparent cream-glazed sample.



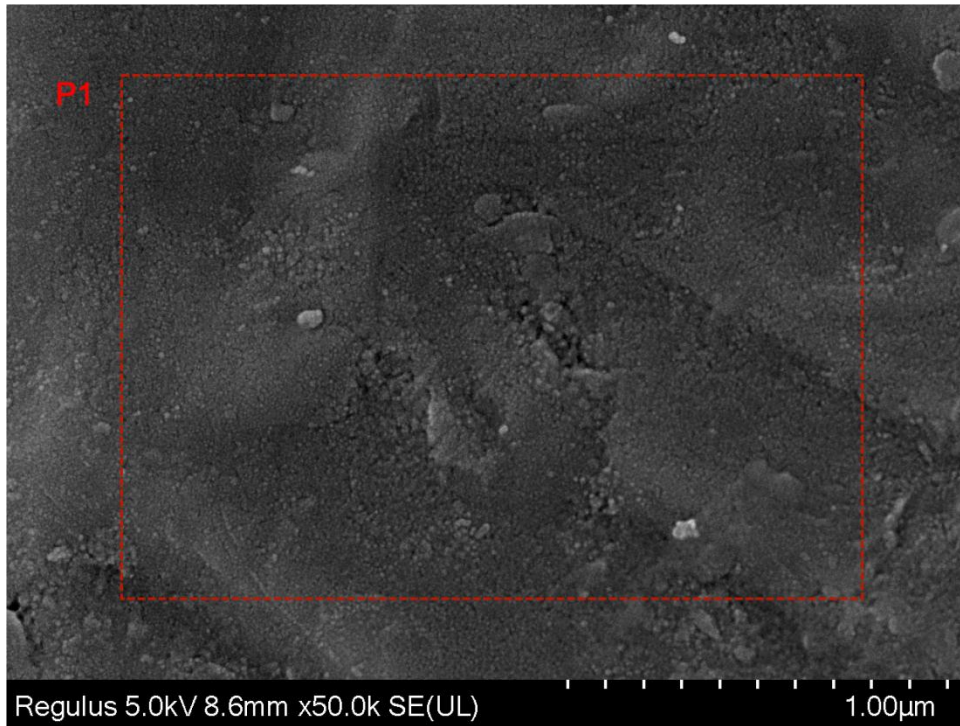
Supplementary Fig. 2 EDS elemental mapping of the surface of the transparent cream-colored glaze. The area is shown in Fig. 2c.



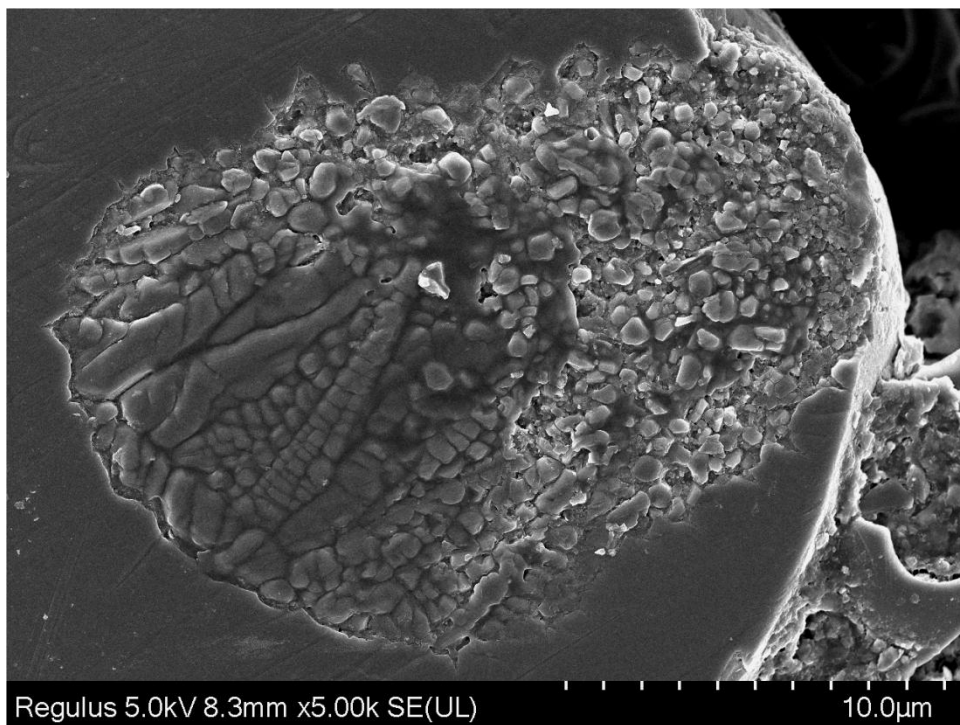
Supplementary Fig. 3 EDS elemental mapping of the cross-section of the transparent cream-colored glaze. The area is shown in Fig. 3b.



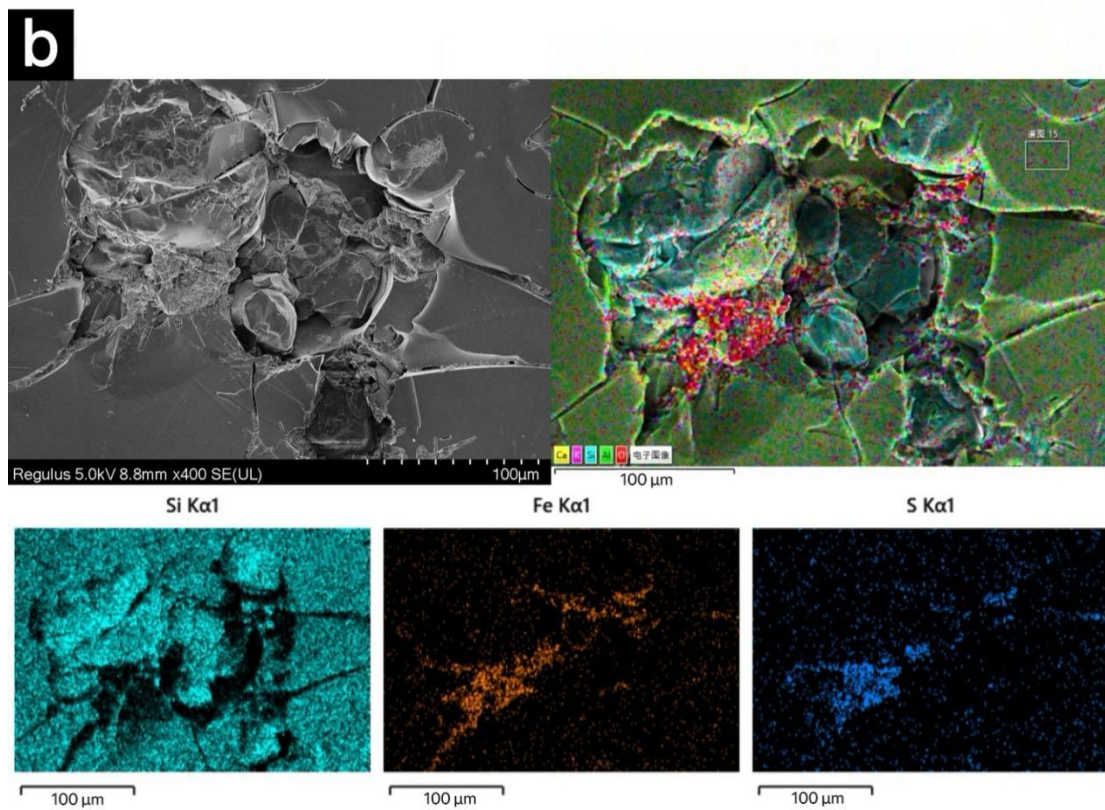
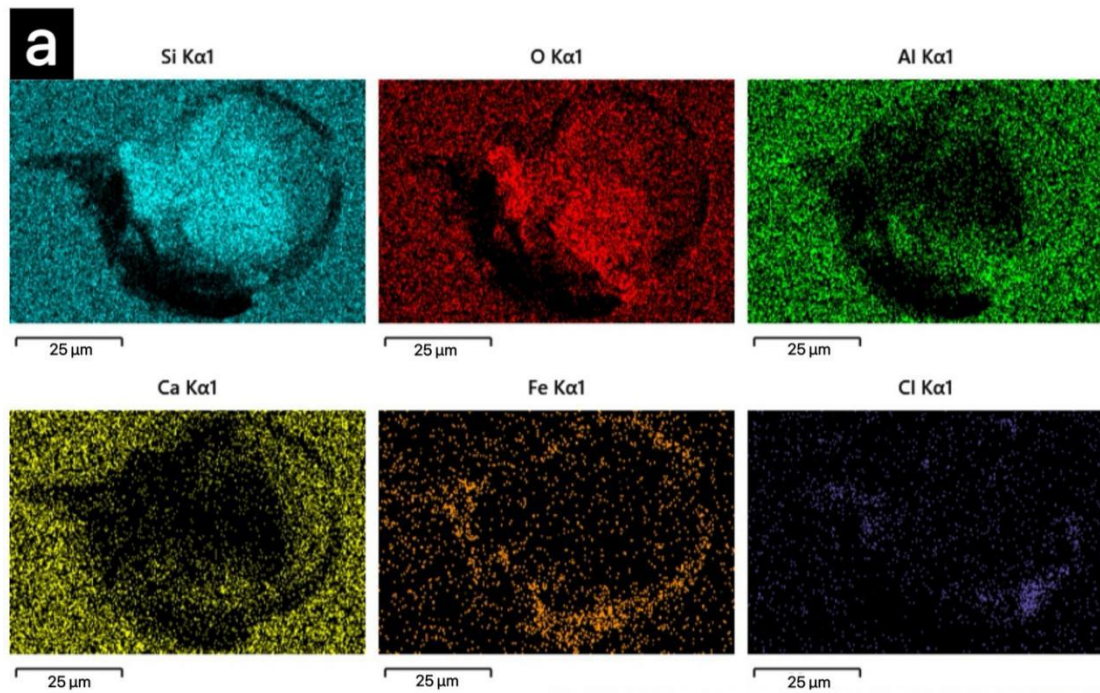
Supplementary Fig. 4. Raman spectrum of the brown deposits, identified as goethite (RRUFF ID: R050142; α -FeOOH), and akaganeite (National Museum of China; β -FeOOH).



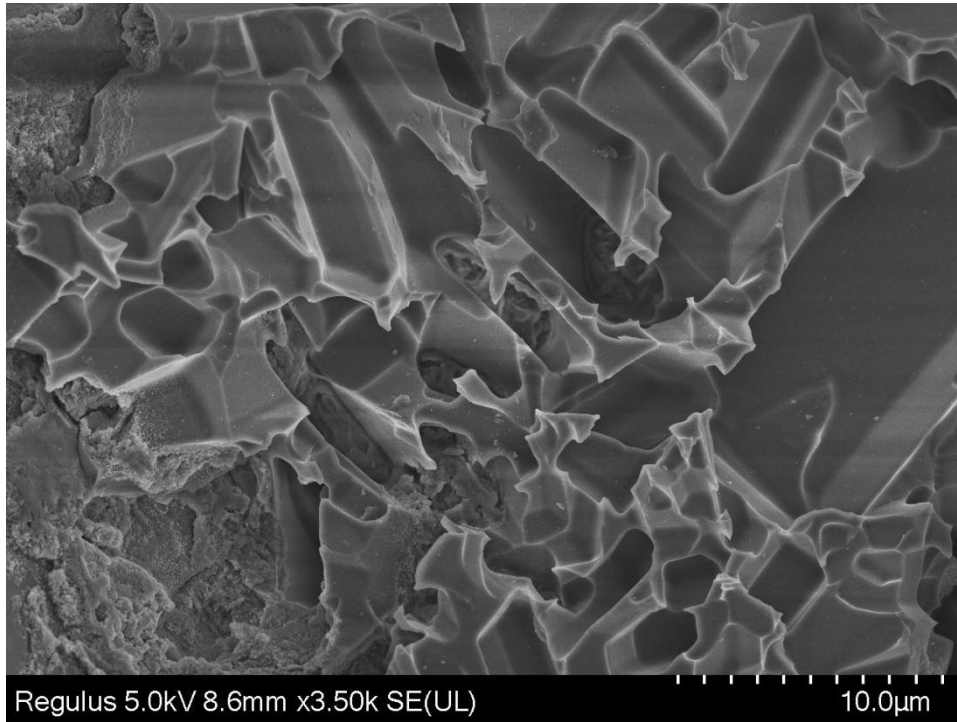
Supplementary Fig. 5. SEM image of the localized corrosion layer on the matt ash-green glaze surface in region A is composed of granular aggregates.



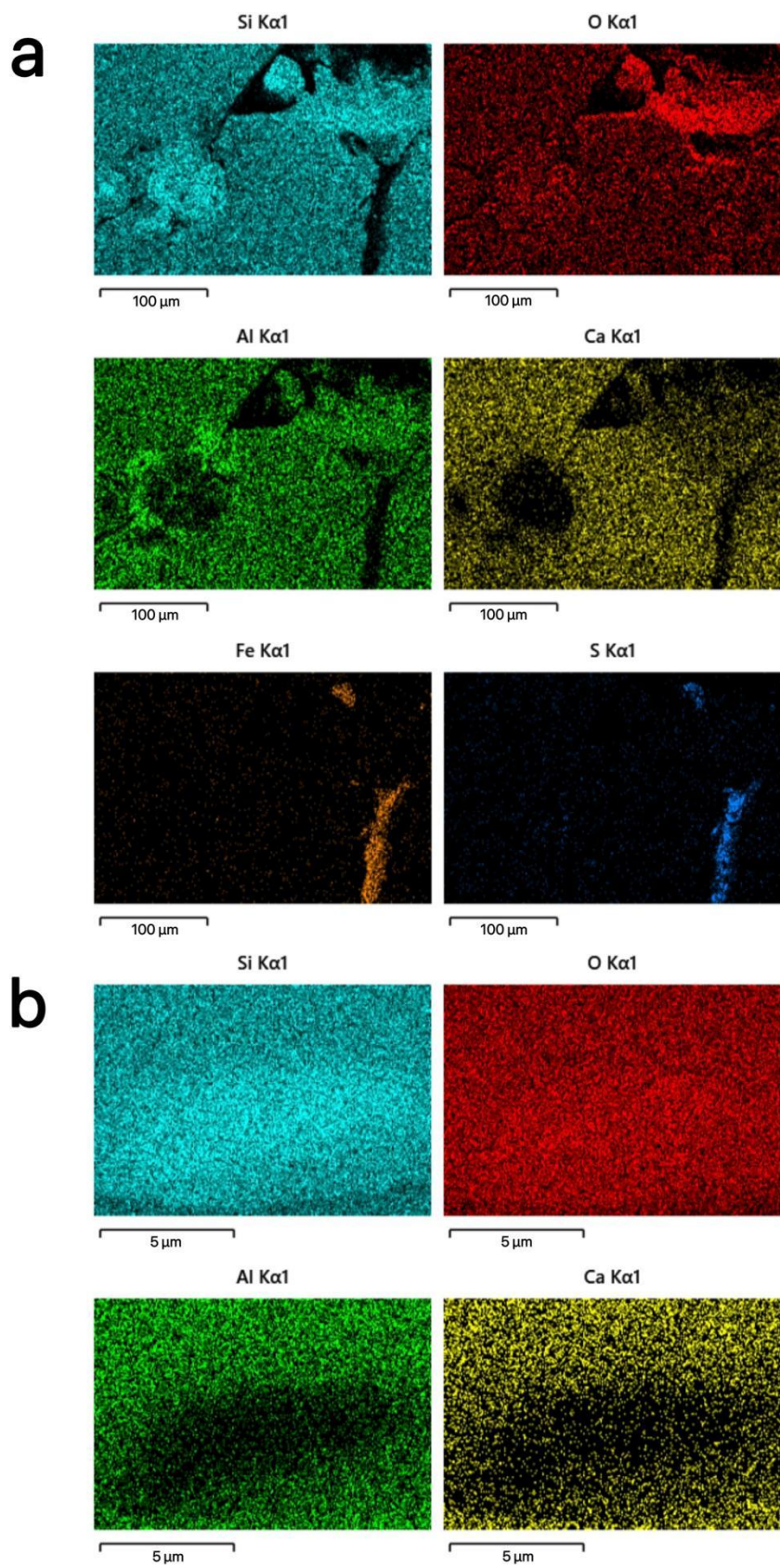
Supplementary Fig. 6. SEM image of the internal structure of a quartz sphere surrounded by an arc-shaped crack.



Supplementary Fig. 7. EDS elemental mapping of the surface of the matte ash-green glaze. (a) The area is shown in Fig. 4f. (b) Another corrosion pit.



Supplementary Fig. 8. SEM image of the enlarged view of the boxed area shown in (4i) displaying columnar pits at the base of the corrosion pit.



Supplementary Fig. 9. EDS elemental mapping of the cross-section of the matte ash-green glaze. The areas are shown in Figs. (a) 6f and (b) 6i.