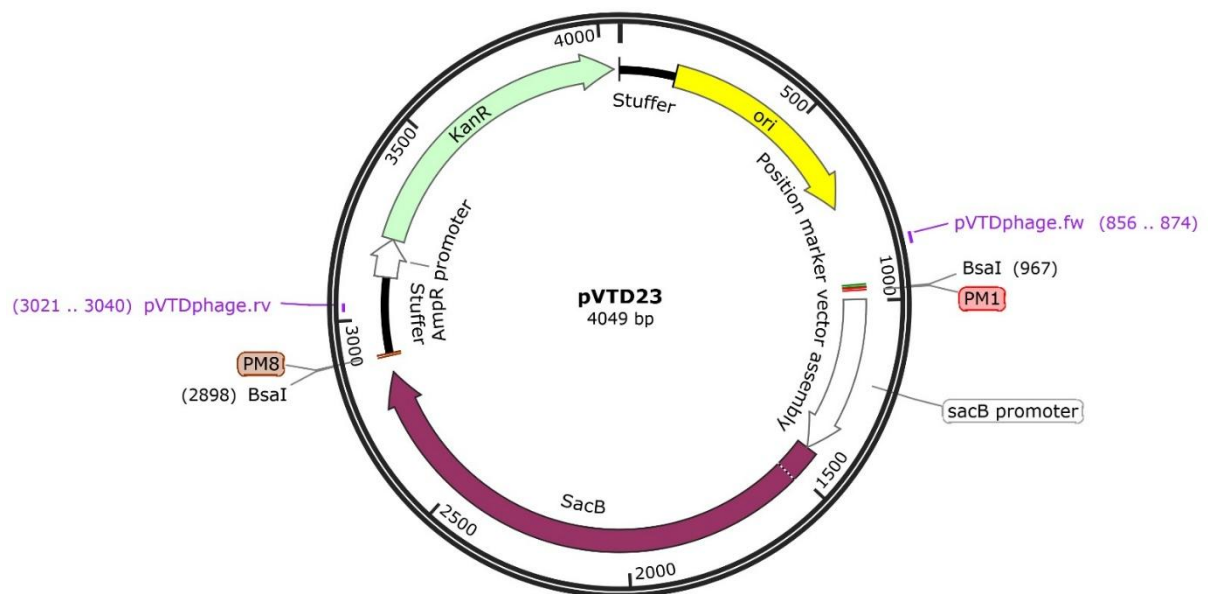
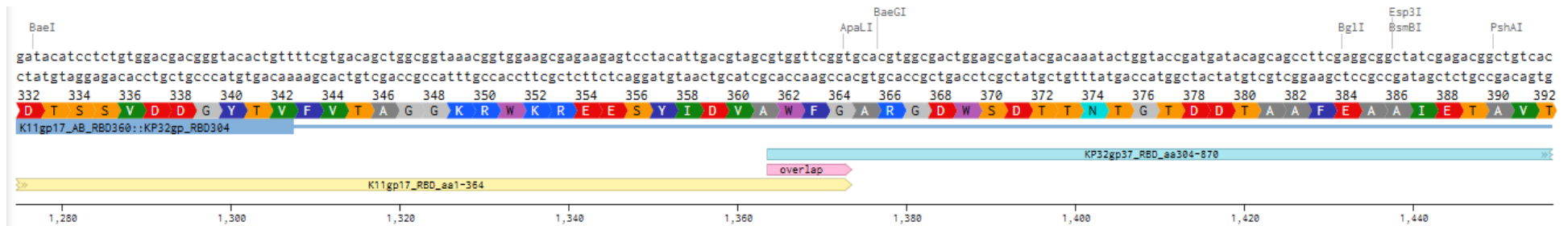


Supplementary Fig. S1: Vector map of the cloning vector pVTE used in the VersaTile technique to construct tiles. Figure obtained using SnapGene v7.1.1.



Supplementary Fig. S2: Vector map of destination vector pVTD23 used in the VersaTile technique to construct RBP gene clusters. Figure obtained using SnapGene v7.1.1



Supplementary Fig. S3: Homologous recombination spot of engineered phage K11gp17_RBD1aa364::KP32gp37_RBD1aa304

