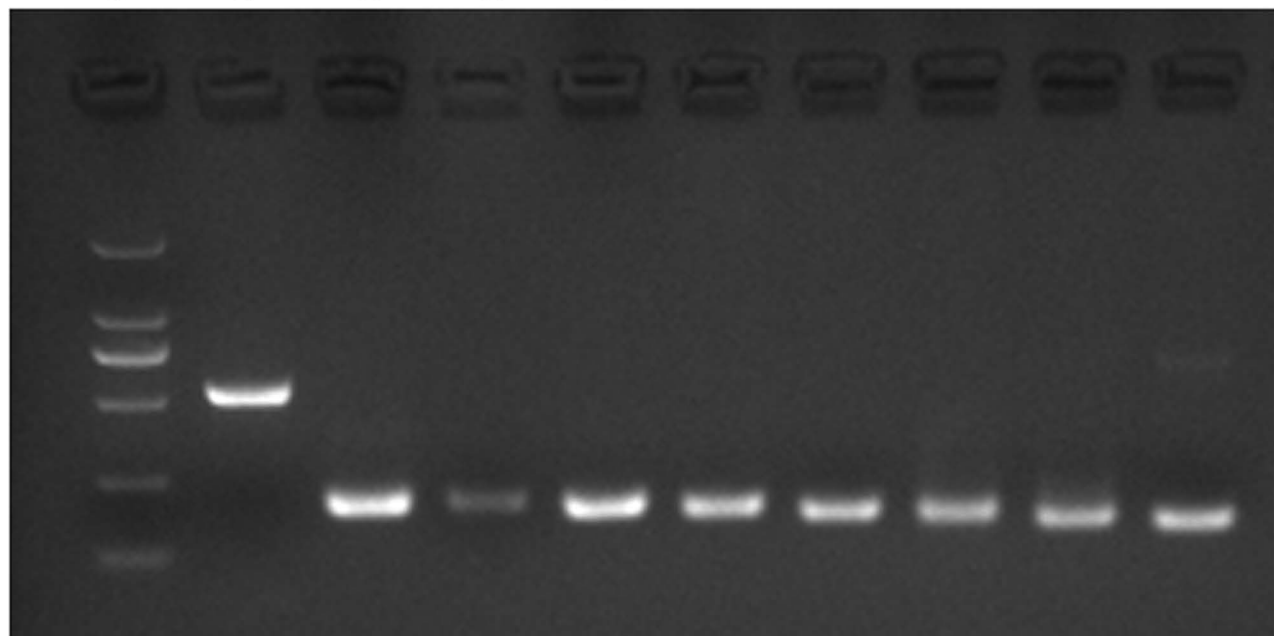


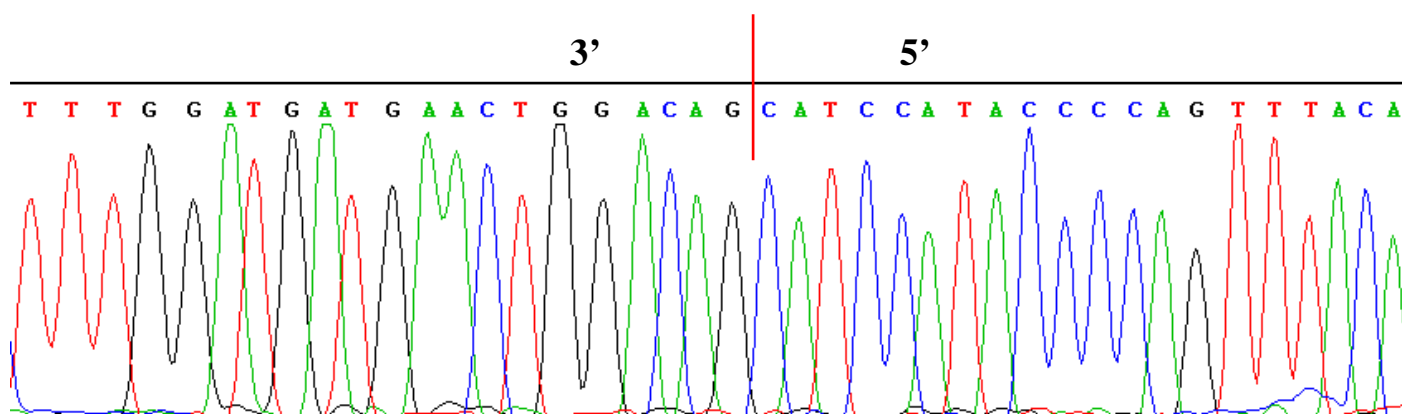
A

Marker **circPFKFB1** **circKANSL1L_3**
circLIMCH1 **circKANSL1L**
circ4082 **circKANSL1L_2**
circMYBPC2 **circMYBPC2_2**
circNR1H3

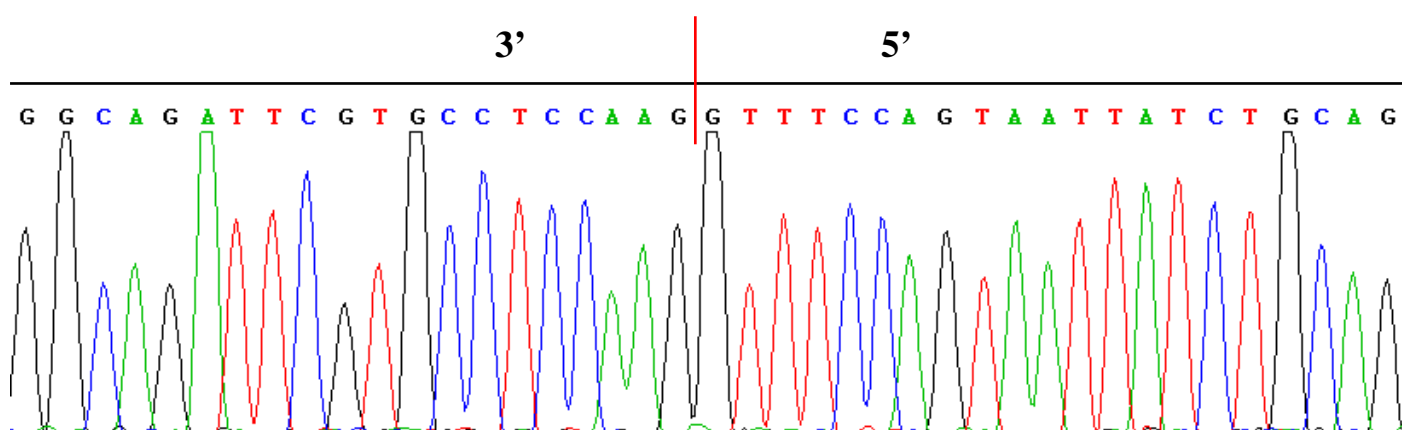


B

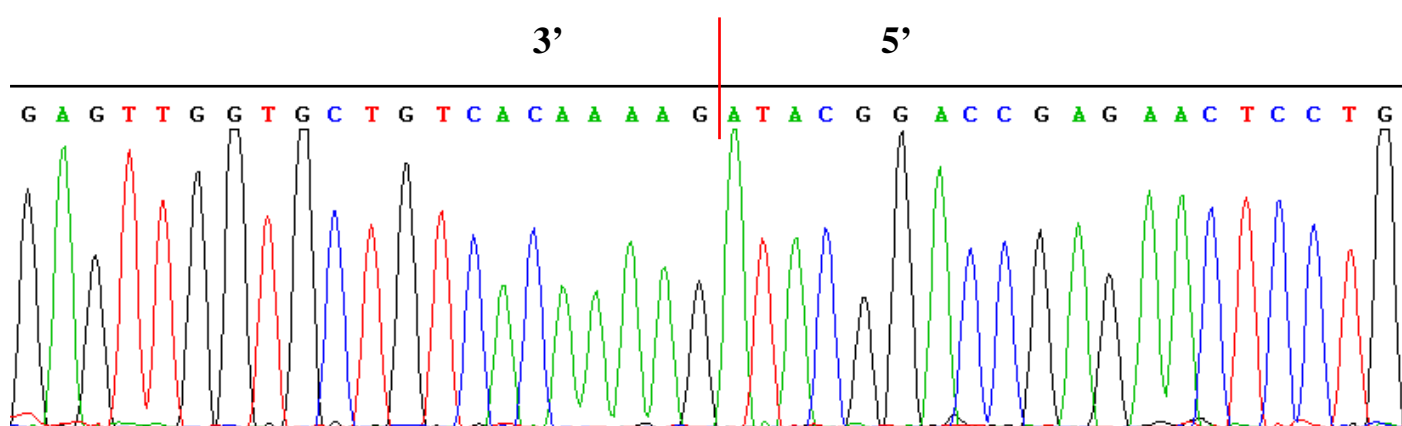
circPFKFB1 junction sequences (5' → 3')



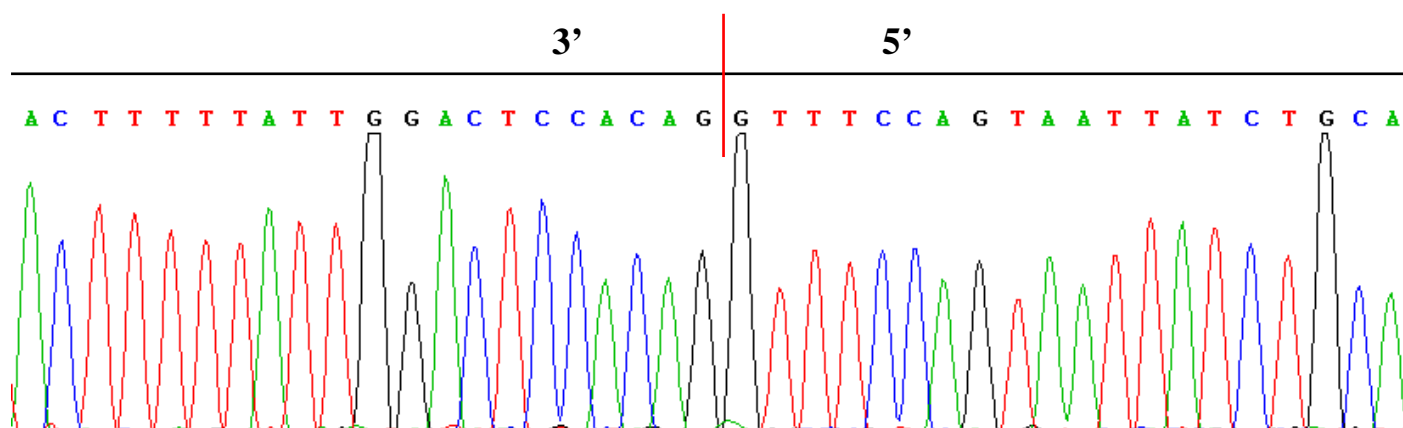
circKANSL1L_3 junction sequences (5' → 3')



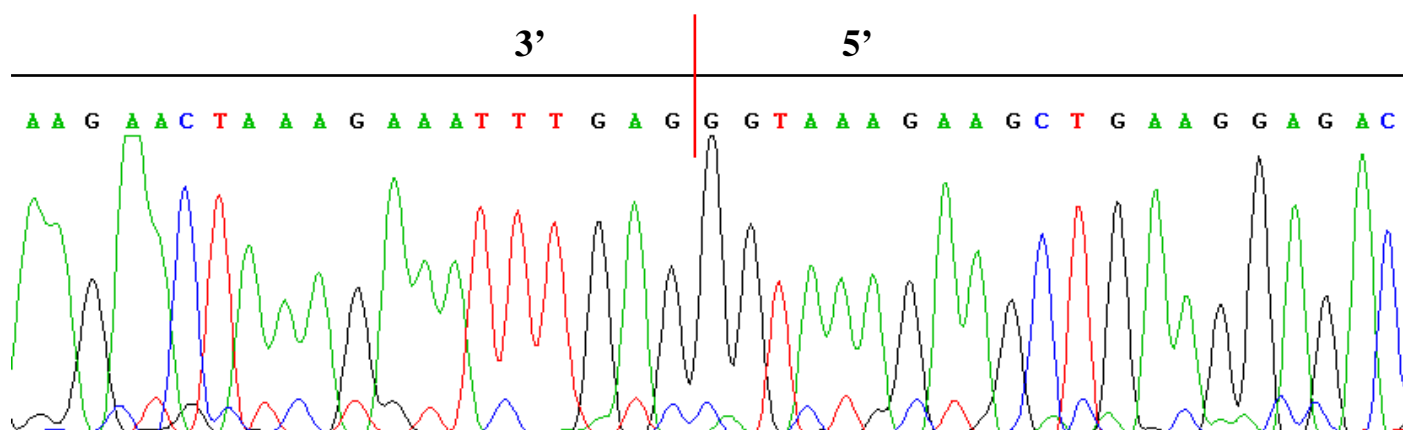
circLIMCH1 junction sequences (5' → 3')



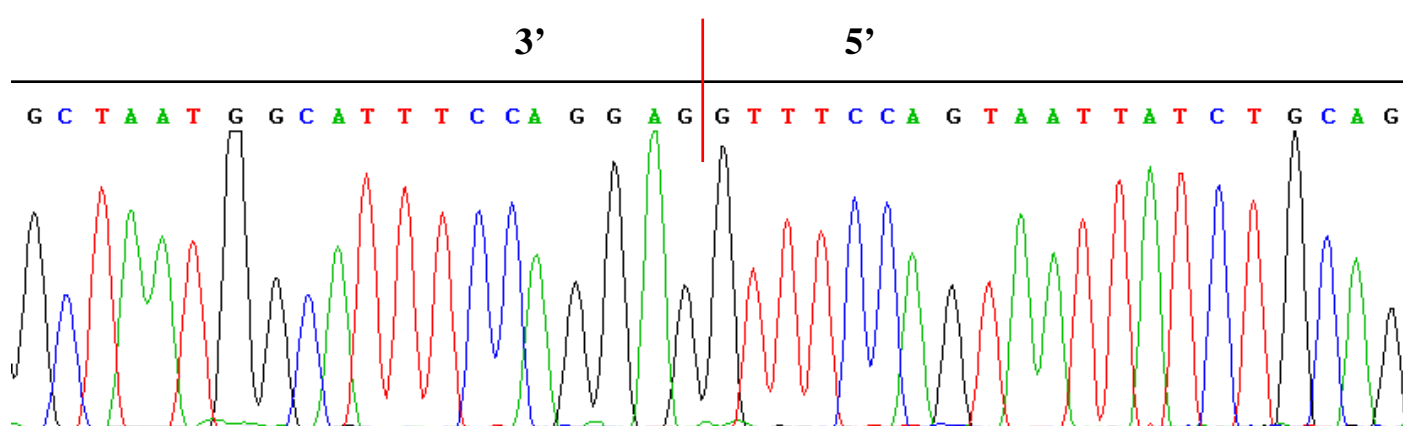
circKANSL1L junction sequences (5' → 3')



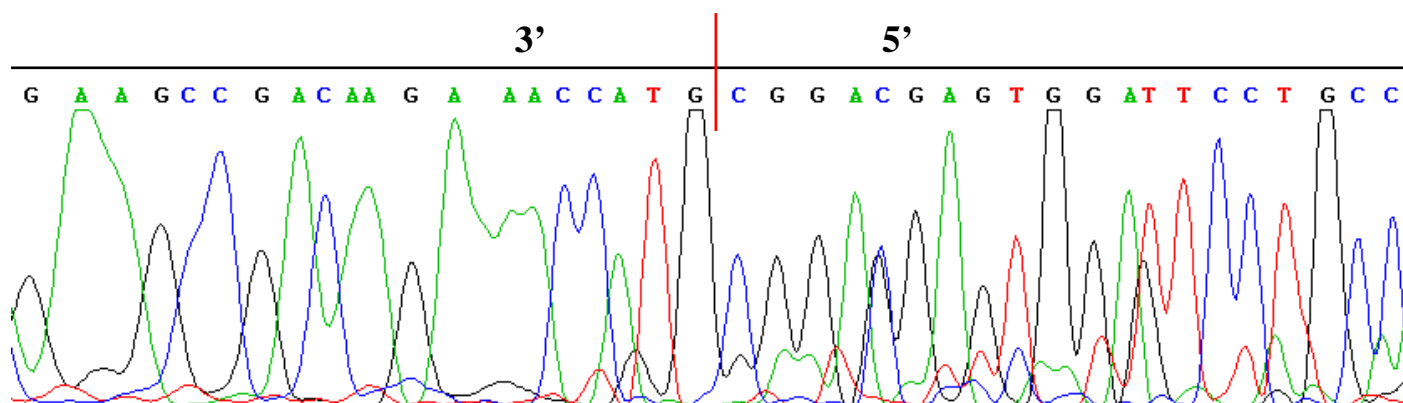
circ4082 junction sequences (5' → 3')



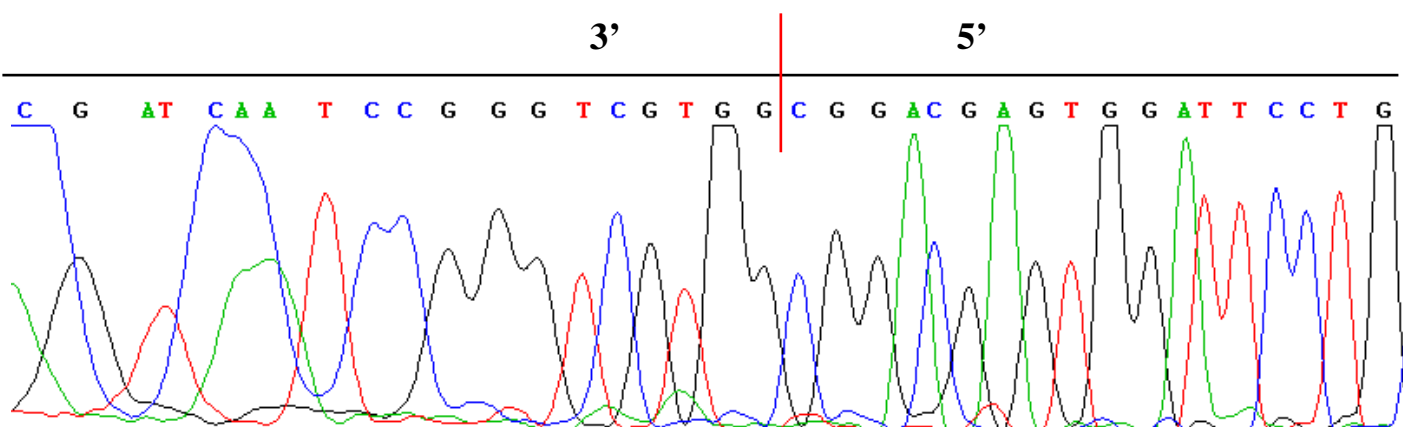
circKANSL1L_2 junction sequences (5' → 3')



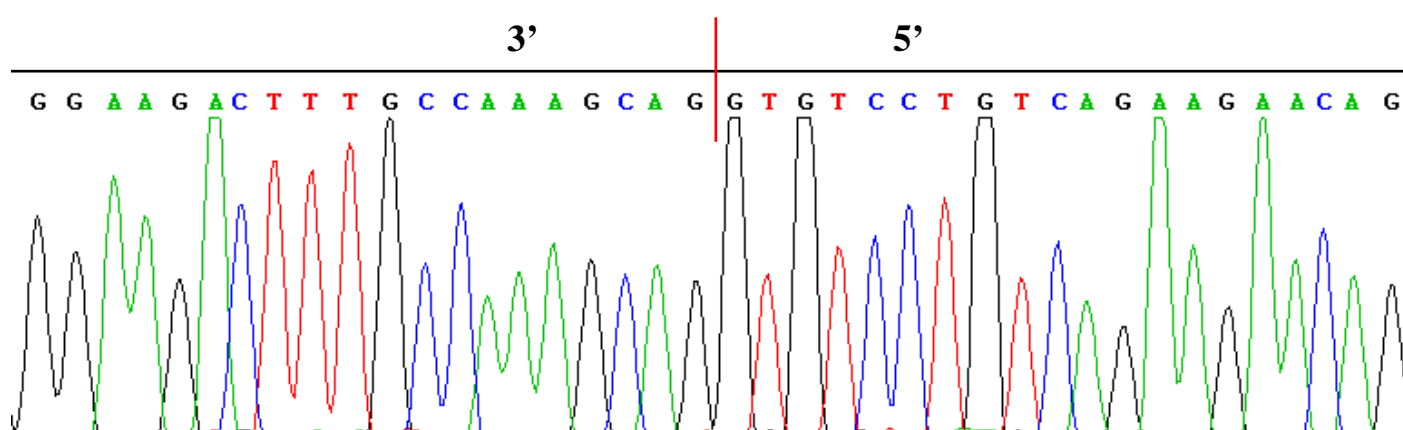
circMYBPC2 junction sequences (5'→3')



circMYBPC2_2 junction sequences (5'→3')



circNR1H3 junction sequences (5'→3')



RT-PCR (A) and Sanger sequencing (B) confirmed head-to-tail junction of circRNA candidates