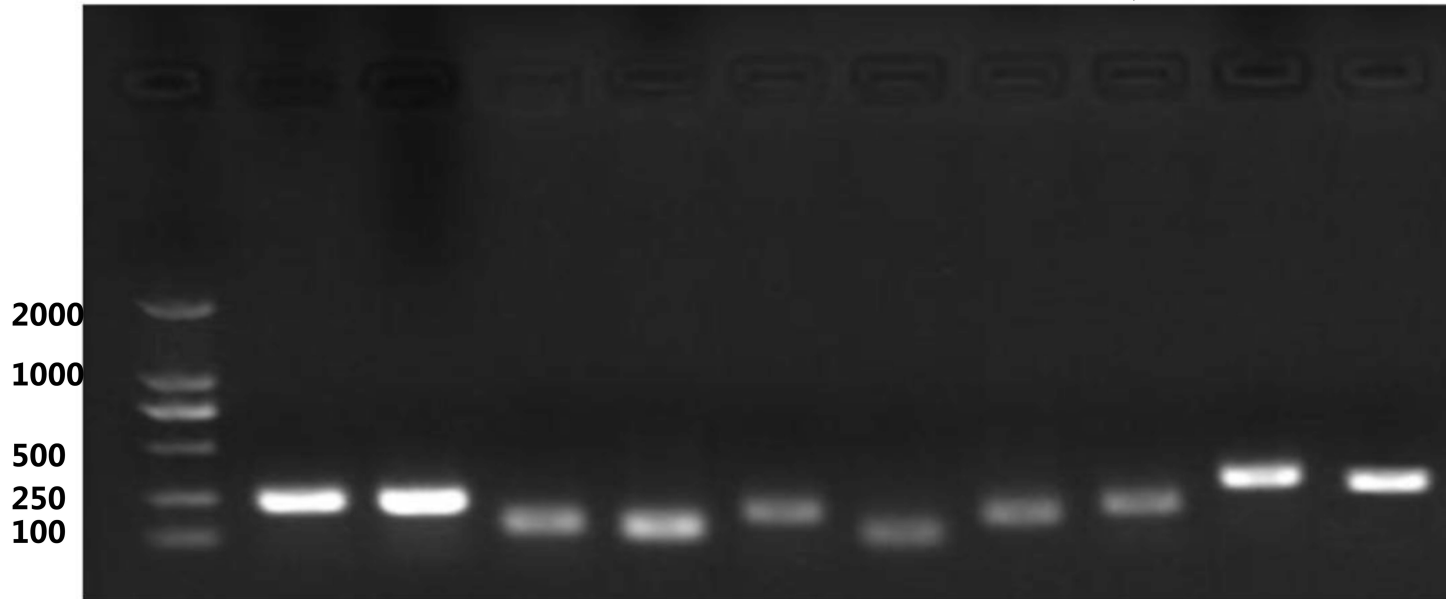
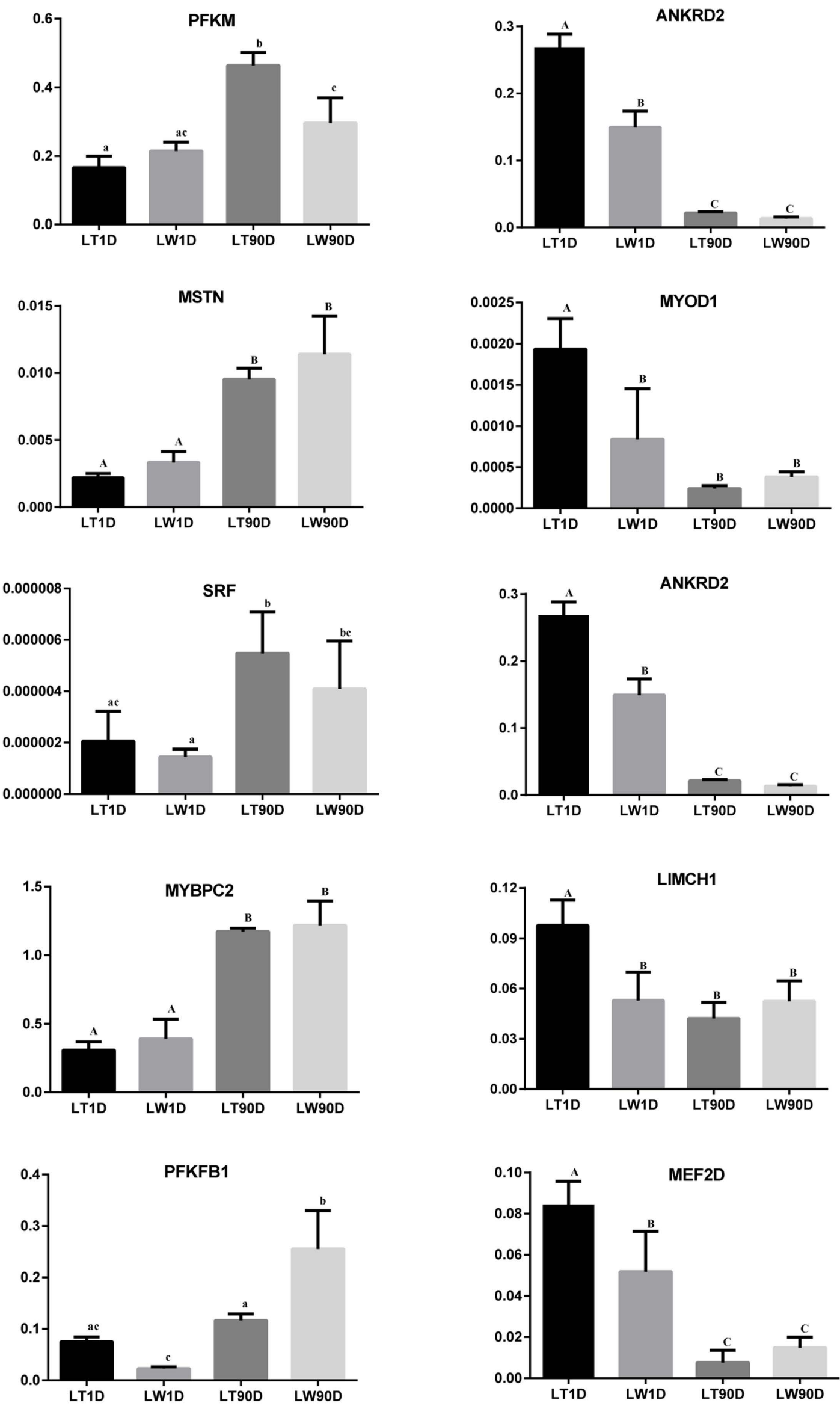


A

Marker **PFKM** **ANKRD2** **MSTN** **MYOD1** **SRF** **IGF1** **MYBPC2** **LIMCH1** **PFKFB1** **MEF2D**



B



The expression of 10 coding genes involved in myogenesis using RT-PCR (A) and qPCR (B)

Note: vertical coordinate represented for the relative expression level, and the data represented the mean \pm SD from 3 biological replicates with each measurement repeated 3 times. a-c denote values that differ significantly at $P < 0.05$, and A-C denote values that differ significantly at $P < 0.01$.