

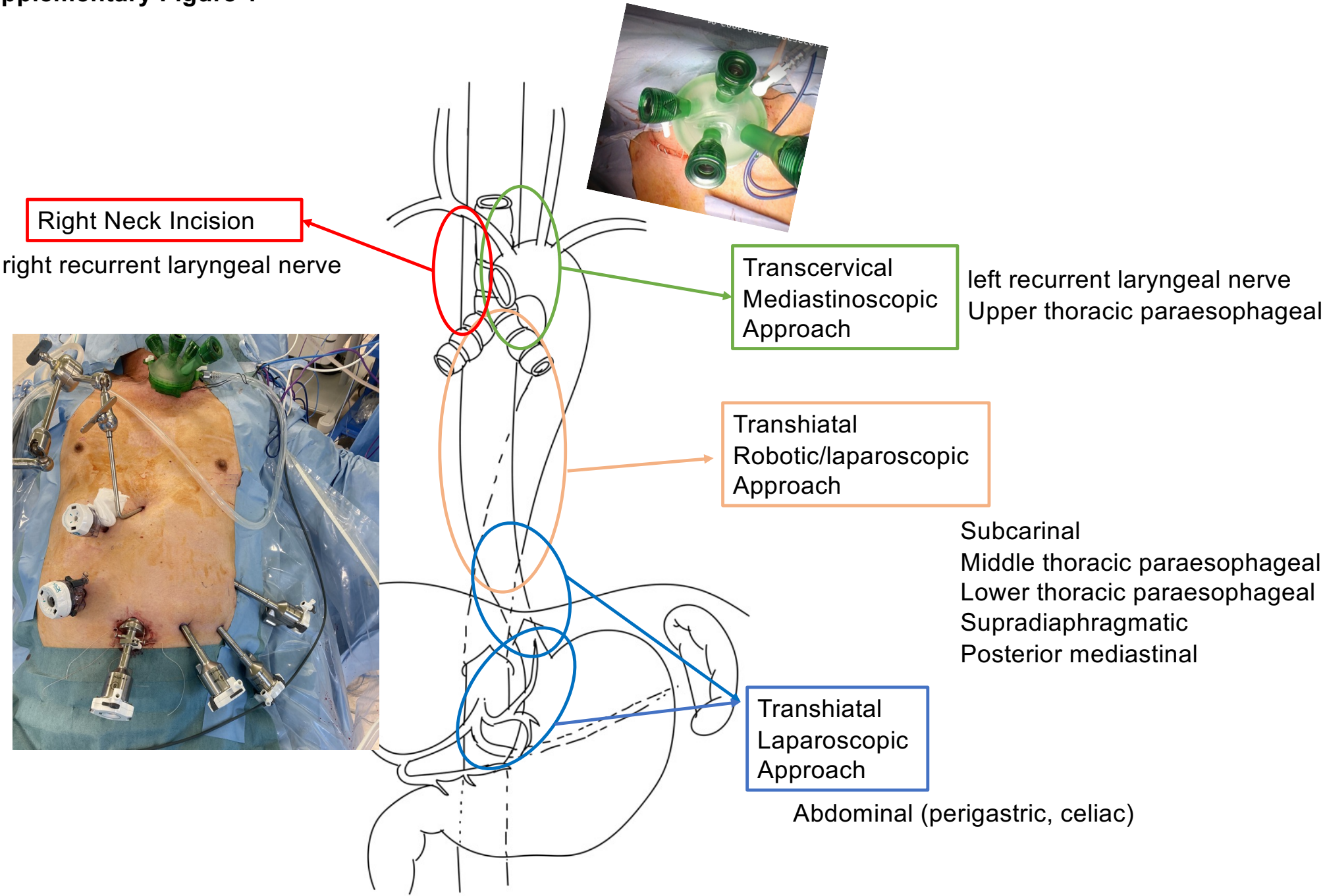
## **Supplementary information**

**Supplementary Figure 1.** Approach used for mediastinal LN dissection

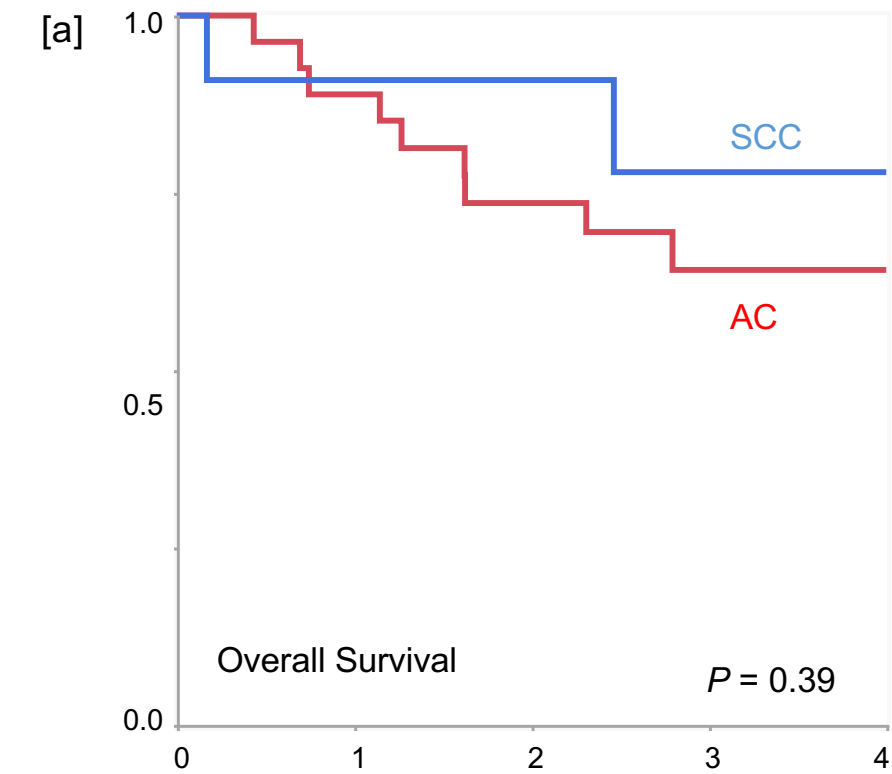
**Supplementary Figure 2.** Overall survival according to (a) tumor histology and (b) the presence of postoperative complications.

**Supplementary Table 1.** Recurrence pattern

Supplementary Figure 1

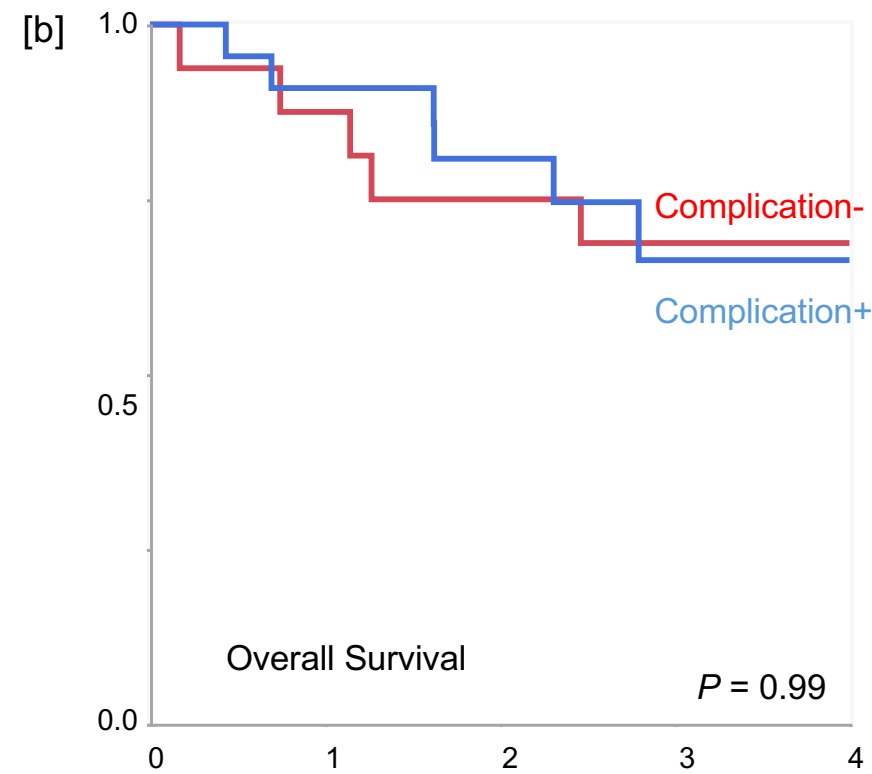


Supplementary Figure 2



No. at risk

SCC	11	10	10	7	5
AC	27	25	19	12	6



No. at risk

Com-	16	15	13	10	4
Com+	22	20	16	9	6

## Supplementary Table 1

Supplementary Table 1. Recurrence pattern	
	No. of patients
Locoregional alone	1 (2.6)
Locoregional + Distant	3 (7.9)
Distant	12 (31.6)
Liver	6 (15.8)
Lung	3 (7.9)
PALN	3 (7.9)
Peritoneal	3 (7.9)
Pleural	1 (2.6)
Abbreviations: PALN, Paraaortic lymph nodes	