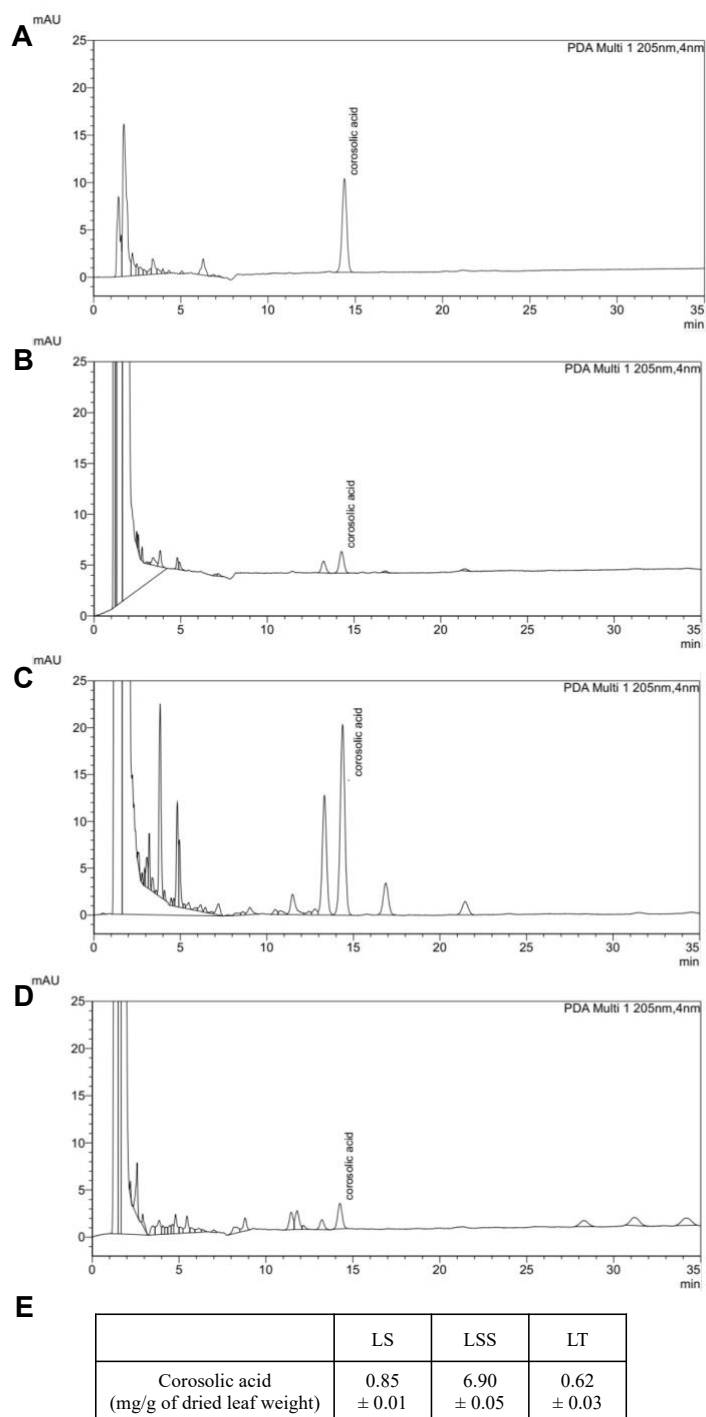


## Supplementary information



**Supplementary Fig. 1.** Image of a 2-lane OrganoPlate (cat#9605-400-B, MIMETAS)



**Supplementary Fig. 2.** (A–D) Chromatograms of the standard (A) and the LS (B), LSS (C), and LT (D) extracts. The peak corresponding to corosolic acid is indicated in each panel. (E) Summary of the corosolic acid content in the LS, LSS, and LT extracts.