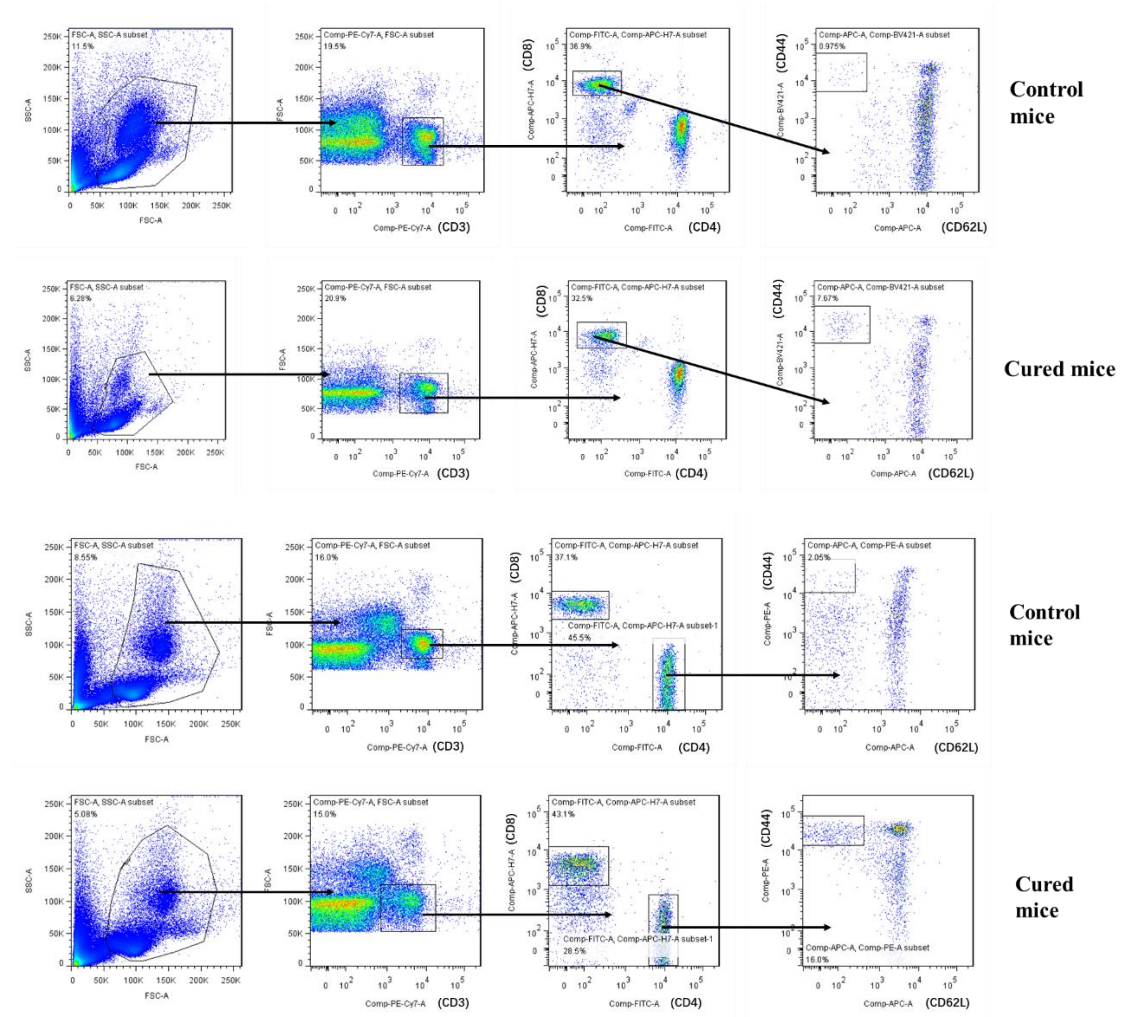


Supplemental Figure 1



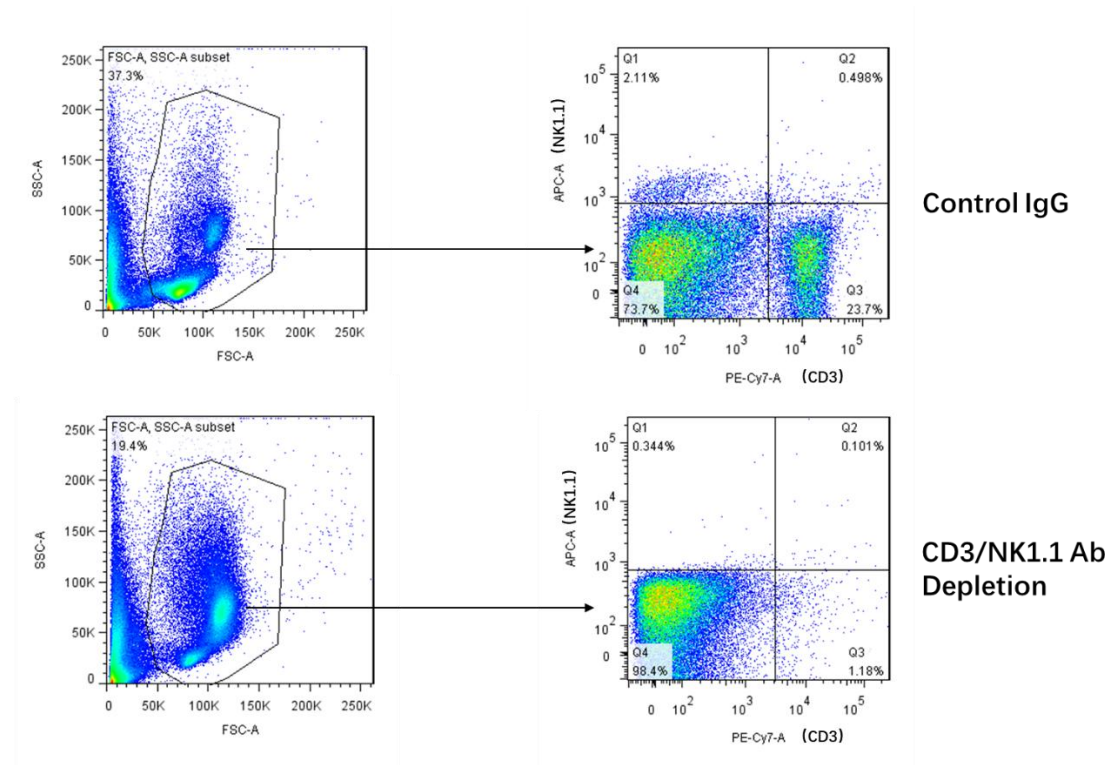
Picture of mice of the long-term (50 weeks) cured mice

Supplemental Figure 2



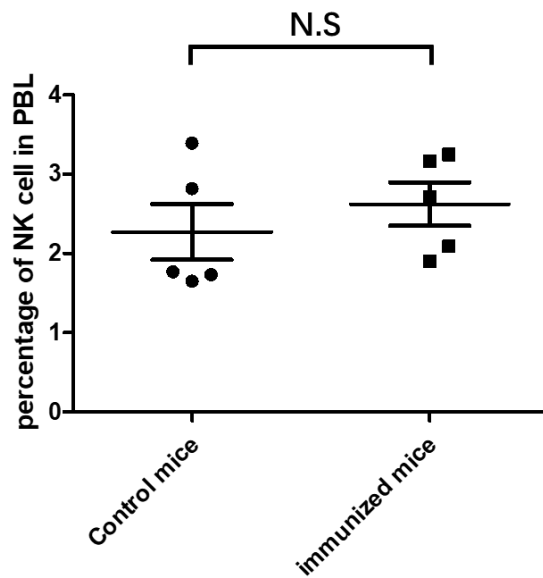
The ratio of CD44+/CD62L—in CD8+ and CD4+ T cells of control or anit-CTLA-4 antibody-cured mice. FACS plots are shown as representative examples of the gating strategy used in each experiment, combined with plots showing the comparison of the ratio of CD44+/CD62L—in CD8+ (A)T cells and CD4+ (B) in control or cured (B) mice.

Supplemental Figure 3



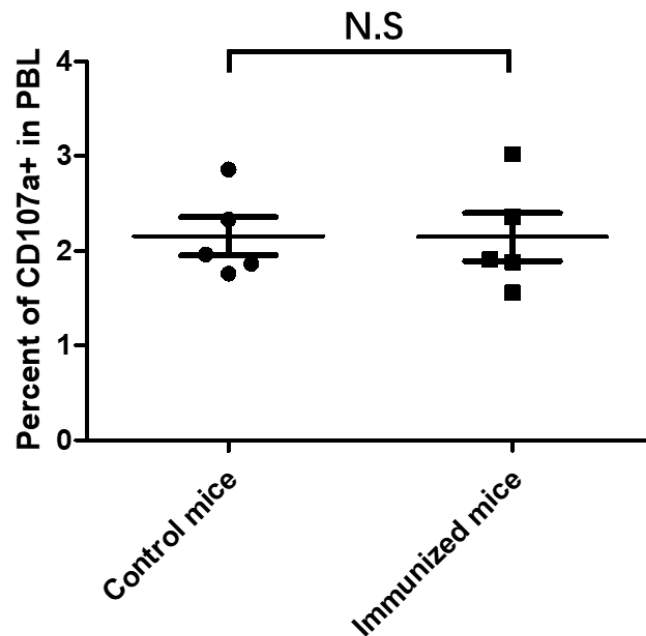
CD3⁺ T cells and NK cells decreased significantly in mice treated with anti-CD3 antibody and anti-NK1.1 antibody. FACS plots are shown as a representative example of the gating strategy used in the comparison of the ratio of CD3⁺ T and NK cells in control IgG or anti-CD3/NK1.1 antibody-treated mice.

Supplemental Figure 4



The ratio of NK cells did not alter significantly in the PBL of the CTLA-4-immunized mice. The ratio of NK cell in PBL of the control mice or CTLA-4-immunized mice were analyzed by FACS.

Supplemental Figure 5



The ratio of CD107a+ immune cells did not alter significantly in the PBL of the CTLA-4-immunized mice. The ratio of CD107a+ cell in PBL of the control mice or CTLA-4-immunized mice were analyzed by FACS.